



Epithelial cell dysfunction, a major driver of asthma development

Irene H. Heijink^{1,2}  | Virinchi N. S. Kuchibhotla^{1,3}  | Mirjam P. Roffel^{1,4} |
Tania Maes⁴ | Darryl A. Knight^{3,5,6} | Ian Sayers⁷ | Martijn C. Nawijn¹

¹Department of Pathology & Medical Biology, GRIAC Research Institute, University Medical Center Groningen, University of Groningen, Groningen, The Netherlands

²Department of Pulmonology, University Medical Center Groningen, University of Groningen, Groningen, The Netherlands

³School of Biomedical Sciences and Pharmacy, University of Newcastle, Callaghan, NSW, Australia

⁴Department of Respiratory Medicine, Laboratory for Translational Research in Obstructive Pulmonary Diseases, Ghent University Hospital, Ghent University, Ghent, Belgium

⁵UBC Providence Health Care Research Institute, Vancouver, BC, Canada

⁶Department of Anesthesiology, Pharmacology and Therapeutics, University of British Columbia, Vancouver, BC, Canada

⁷Division of Respiratory Medicine, National Institute for Health Research, Nottingham Biomedical Research Centre, University of Nottingham Biodiscovery Institute, University of Nottingham, Nottingham, UK

Correspondence

Irene H. Heijink, Department of Pathology & Medical Biology, University Medical Center Groningen, University of Groningen, Hanzeplein 1, P.O. Box 30.001 9700 RB, NL-9713 GZ Groningen, The Netherlands.
Email: h.i.heijink@umcg.nl

Abstract

Airway epithelial barrier dysfunction is frequently observed in asthma and may have important implications. The physical barrier function of the airway epithelium is tightly interwoven with its immunomodulatory actions, while abnormal epithelial repair responses may contribute to remodelling of the airway wall. We propose that abnormalities in the airway epithelial barrier play a crucial role in the sensitization to allergens and pathogenesis of asthma. Many of the identified susceptibility genes for asthma are expressed in the airway epithelium, supporting the notion that events at the airway epithelial surface are critical for the development of the disease. However, the exact mechanisms by which the expression of epithelial susceptibility genes translates into a functionally altered response to environmental risk factors of asthma are still unknown. Interactions between genetic factors and epigenetic regulatory mechanisms may be crucial for asthma susceptibility. Understanding these mechanisms may lead to identification of novel targets for asthma intervention by targeting the airway epithelium. Moreover, exciting new insights have come from recent studies using single-cell RNA sequencing (scRNA-Seq) to study the airway epithelium in asthma. This review focuses on the role of airway epithelial barrier function in the susceptibility to develop asthma and novel insights in the modulation of epithelial cell dysfunction in asthma.

KEYWORDS

airway remodelling, asthma, (epi)genetics, epithelial barrier, type 2 responses

1 | INTRODUCTION

Asthma is a chronic inflammatory airway disease characterized by coughing, wheezing, chest tightness, variable airflow limitation and airway hyper-responsiveness (AHR)¹ to environmental specific (allergens such as house dust mite (HDM), pollen and

animal dander) and nonspecific (eg tobacco smoke, air pollution) stimuli. Asthma is a heterogeneous disease with a complex aetiology. Allergen-induced asthma is the most common form, with atopy and allergic sensitization being identified as major risk factors.² Other risk factors include increased viral infections during early childhood, exposure to tobacco smoke and air pollution.³ In

This is an open access article under the terms of the Creative Commons Attribution-NonCommercial-NoDerivs License, which permits use and distribution in any medium, provided the original work is properly cited, the use is non-commercial and no modifications or adaptations are made.

© 2020 The Authors. *Allergy* published by European Academy of Allergy and Clinical Immunology and John Wiley & Sons Ltd

addition to elevated serum IgE, features of atopic asthma include chronic eosinophilic airway inflammation and airway remodelling with increased smooth muscle mass, subepithelial fibrosis, epithelial desquamation and goblet cell hyperplasia. Type-2T-helper (Th2) lymphocytes are key players in the eosinophilic airway inflammatory response of allergen-sensitized individuals, giving rise to the pathological changes and clinical symptoms of asthma.⁴ Other asthma endotypes include nonallergic eosinophilic asthma, which may be driven by type-2 innate lymphocytes, mixed-granulocytic asthma, type-1 and type-17-mediated neutrophilic asthma, and paucigranulocytic asthma, without apparent neutrophilia and eosinophilia.⁵

Susceptibility to asthma has a strong genetic component. Many asthma susceptibility genes are expressed in the airway epithelium (eg *IL1RL1*, *IL33*, *TSLP*, *CDHR3*, *PCDH1*, *MUC5AC*, *KIF3A*, *EFHC1* and *GSDMB*, as outlined below), highlighting the importance of the airway epithelium in the development of asthma. Allergens, viruses and other inhaled environmental insults are in first contact with the airway epithelial barrier, which forms a continuous lining of the respiratory system from the nose to the trachea, bronchi, bronchioles and finally the alveoli. The upper airway epithelium has a different developmental origin than the epithelia of the lower airway and alveolar epithelium. The nature of the epithelium changes in the specific regions, being a pseudostratified columnar epithelium in the nose, trachea and bronchi, transitioning into cuboidal cells in the bronchioles and forming a single-cell thick alveolar epithelium. The alveolar epithelium is highly vascularized and responsible for gas exchange. The alveoli receive air from the conducting airways, starting in the trachea, bifurcating into the bronchi and bronchioles and ending in the terminal bronchioles, which divide into the alveolar ducts from which the alveoli arise. The transitional region between terminal bronchioles and alveoli is referred to as the bronchioalveolar duct junction. Alveolar cells can be subdivided into alveolar type 1 (AT1) epithelial cells, flat-shaped epithelial cells that accommodate the transfer of oxygen into the blood stream and cuboidal-shaped AT2 cells that serve as progenitor cells for AT1 cells, contribute to alveolar tissue regeneration upon injury and produce surfactants to reduce the surface tension. The pseudostratified epithelial layer of the conducting airways is separated from the underlying mesenchyme by the basement membrane and consists of different epithelial cell types: basal, club, goblet and ciliated cells being the major ones. Basal cells serve as progenitors, being able to differentiate into secretory club cells, which can further differentiate into mucus producing goblet cells or mucus clearing ciliated cells.⁶ Club cells are able to self-renew and generate ciliated cells after injury, repopulating damaged airway tissue. Secretory cells also have the capacity to dedifferentiate into basal cells when these cells are ablated by diphtheria toxin, underscoring the remarkable plasticity of the airway epithelium.⁷ While some studies have shown that ciliated cells are terminally differentiated,⁸ others have shown that ciliated cells can undergo dynamic changes in cell shape and gene expression to re-differentiate into columnar cells upon naphthalene induced injury.⁹ In the presence of IL-13, ciliated cells also undergo transdifferentiation into goblet cells.¹⁰ In addition

Bullet points outlining future research perspective

- Future research unravelling the molecular mechanisms and regulatory networks underlying abnormal epithelial repair responses after exposure to environmental insults hold promise for the identification of novel intervention strategies in asthma.
- Single-cell RNA-sequencing studies may lead to elucidating the cellular changes and causal gene regulatory networks underlying the different asthma endotypes.
- Analysis of matched single-cell RNA-Sequencing data sets from airway wall biopsies, bronchial brushes and nasal brushes will allow identification of novel biomarkers for disease activity or treatment response using less invasive methodologies.
- Better understanding of (epi)genetic regulatory mechanisms of airway epithelial abnormalities in asthma likely contributes to identification of novel targets for asthma intervention.

to the physical barrier function and mucociliary clearance of foreign particles, the airway epithelium acts as chemical barrier against environmental insults by secreting, for example antimicrobial peptides, anti-proteases and antioxidants, and is part of the innate immune system. Airway epithelial cells express pattern recognition receptors (PRRs) like toll-like receptors (TLRs), retinoic acid-inducible gene (RIG)-I-like receptors (RLRs), nucleotide-binding oligomerization domain (NOD)-like receptors (NLRs), C-type lectin receptors (CLRs), protease activated receptor (PAR)-2 and purinergic receptors.¹¹

Box outlining the major milestone discoveries

- Loss of epithelial junctions not only results in increased susceptibility towards pathogens and allergens, but also propagates pro-inflammatory responses and may contribute to airway remodelling.
- E-cadherin loss and activation of β -catenin per se induce epithelial features reminiscent of the airway epithelium in asthma in vitro and in vivo models.
- Loss of airway epithelial barrier function in asthma is a consequence of interaction between environmental and genetic factors and epigenetic regulatory mechanisms.
- Expression quantitative trait loci (eQTL) studies in human bronchial epithelial cells and bronchial alveolar lavage identified risk alleles that regulate expression of genes involved in epithelial function, including *IL1RL1*, *IL33*, *TSLP*, *CDHR3*, *MUC5AC*, *KIF3A*, *EFHC1* and *GSDMB*, support the role of the airway epithelium as driver of asthma pathogenesis.

These recognize pathogen-associated molecular patterns (PAMPs) from inhaled microbes, parasites and allergens as well as alarmins/damage-associated molecular patterns (DAMPs) released from dying or damaged cells. Upon recognition of PAMPs or DAMPs, PRRs activate downstream signalling that promotes the release of pro-inflammatory cytokines/chemokines, including IL-6, IL-8, CCL20, CCL17, TSLP, IL-25, IL-33 and GM-CSF. These can attract and/or activate cells from the innate and adaptive immune system. Upon sensing of allergens by various PRRs, including purinergic receptors, multiprotein complexes termed inflammasome can be activated, leading to caspase-1 activity and subsequent cleavage of IL-1 β and IL-18 into active forms.¹² In particular, HDM has been shown to activate the nucleotide-binding domain and leucine-rich repeat protein 3 (NLRP3) inflammasome through PI3K/Akt pathway leading to inflammation in asthma.^{13,14} During these allergen-driven inflammatory responses, dendritic cells (DCs) induce the differentiation Th2 cells, which secrete cytokines such as IL-4, IL-5, IL-9 and IL-13 to induce IgE production by B-lymphocytes, eosinophilic infiltration into the airways and goblet cell hyperplasia with excessive mucus production. Epithelial alarmins can drive similar responses (independent of allergens) through activation of type-2 innate lymphoid cells (ILC2).¹⁵

Upon damage, for example by exposure to allergens, the epithelial barrier is disrupted, promoting epithelial release of growth factors such as epidermal growth factor (EGF) and TGF- β , which activate fibroblasts and myofibroblasts.¹⁶ This promotes excessive deposition of extracellular matrix (ECM) components, for example

collagens, in the lamina reticularis just below the basement membrane, termed as subepithelial fibrosis, resulting in airway wall thickening and increased smooth muscle mass.¹⁷ In addition, release of vascular endothelial growth factor (VEGF) by airway epithelial cells increases the size of airway wall vessels and promotes angiogenesis.¹⁸ These structural changes are characteristic of airway remodelling in asthma (Figure 1). Thus, the airway epithelium may be crucial in the pathophysiology of asthma. In this review, we will focus on airway epithelial barrier dysfunction as driver of asthma.

2 | EPITHELIAL BARRIER DYSFUNCTION IN ASTHMA

The airway epithelial layer in asthma is disrupted, as indicated by detachment of ciliated cells, presence of epithelial cell aggregates (creola bodies) in sputum, increased permeability to allergens and reduced expression of cell-cell adhesion molecule E-cadherin.^{19,20} Epithelial damage is a pathological feature observed in all phenotypes of asthma.²¹ Structural changes have been observed in the airway epithelium of children with respiratory problems before the onset of airway inflammation and clinical diagnosis of asthma, suggesting that epithelial changes occur early in asthma pathogenesis.² This challenged the dogma that chronic airway inflammation induces airway remodelling. One of the key features of epithelial remodelling in asthma is the loss

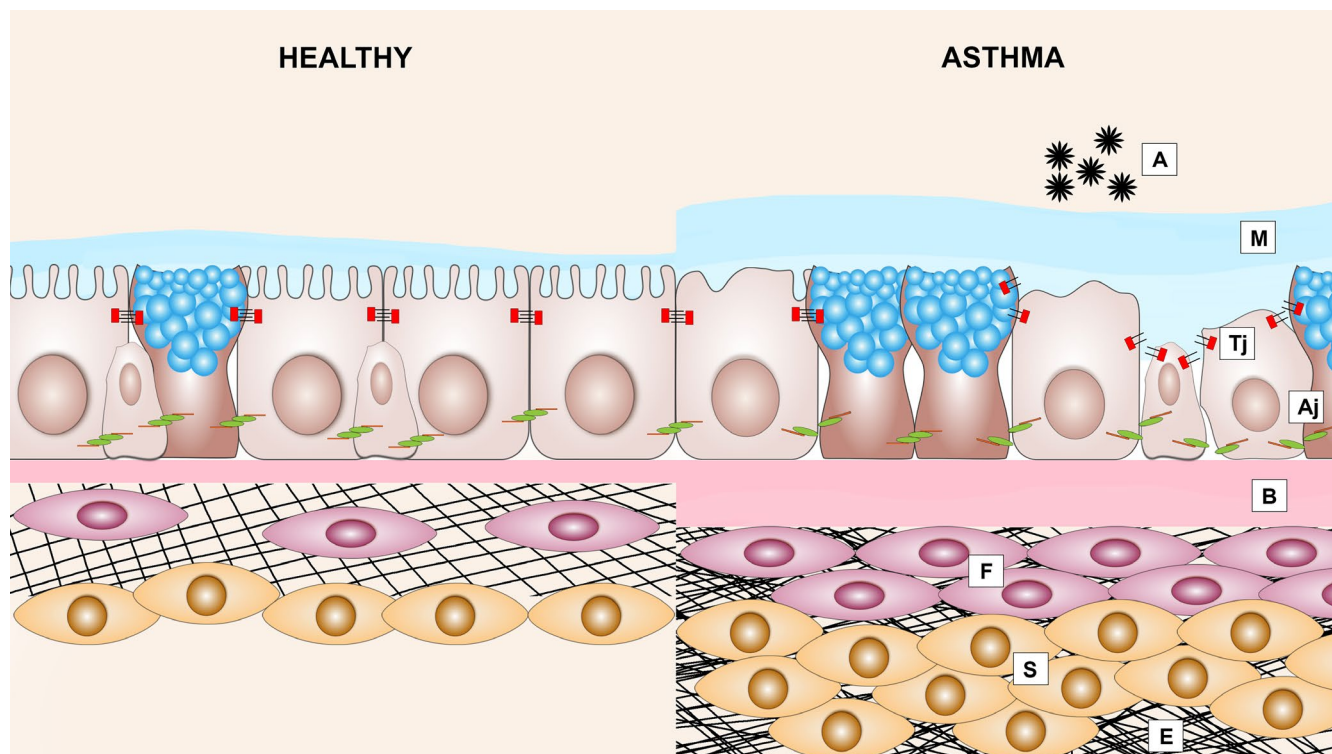


FIGURE 1 Structural changes in the airways of allergic asthma patients: Epithelial barrier dysfunction and airway remodelling. Asthmatic airway epithelium exposed to allergens (A) results in the disruption of adherens junctions (Aj) and tight junctions (Tj), which is accompanied by loss of ciliated cells, mucus hypersecretion (M), thickening of the basal membrane (B), subepithelial fibrosis (F), increased smooth muscle mass (S) and excessive deposition of ECM (E)

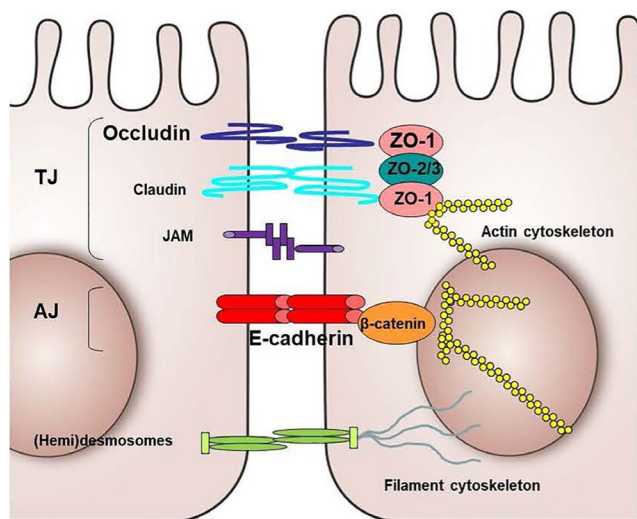


FIGURE 2 Schematic representation of the basic structural components of epithelial junctions. AJ, Adherens Junction; JAM, junctional adhesion molecule; TJ, Tight junction

of cell-cell contact proteins, which mechanically connect adjacent epithelial cells, thereby keeping the barrier intact. These intercellular junctions are mainly comprised of tight junctions (TJs), which are located most apically, adherens junctions (AJs) and (hemi)desmosomes, which are located basolaterally (Figure 2). Desmosomes form adhesive bonds with the filament cytoskeleton between adjacent cells or between cells and the lamina propria by nonclassical cadherins.²² The major constituent of AJs is transmembrane protein E-cadherin. Its extracellular domain binds homotypically to neighbouring cells, while the intracellular domain is linked to the actin cytoskeleton by a microtubule network of p120-catenin, β -catenin and α -catenin proteins, providing mechanical support and intracellular signalling. E-cadherin is thought to be crucial for formation of all other junctions, and its disruption results in delocalization of TJ proteins.^{23,24} TJs are composed of the transmembrane proteins zona occludens-1 (ZO-1), occludin, claudins and junction adhesion molecules (JAMs) and are the main regulators of epithelial permeability.²⁵

Disrupted expression of E-cadherin, β -catenin, ZO-1 and occludin has been observed in airway epithelium of asthma patients,^{20,26,27} leading to impaired barrier function.^{19,28} In murine studies, it has been demonstrated that the junctional proteins ZO-1, Tjp2, Occludin and Claudins-5,-8,-18 and -23 are decreased in all the three chronic HDM models of eosinophilic, neutrophilic and mixed granulocyte experimental asthma.²⁹ Animal models have also demonstrated that lung epithelial-specific deficiency of E-cadherin results in epithelial denudation with specific loss of ciliated cells³⁰ and that loss of E-cadherin in club cells induces their proliferation while inhibiting differentiation, impairing epithelial repair upon injury.³¹ Expression of E-cadherin may not only be critical for the formation of a functionally intact epithelial layer, as downregulation of E-cadherin is also crucial for epithelial plasticity, where cells lose their epithelial phenotype and gain mesenchymal characteristics, termed epithelial-to-mesenchymal transition (EMT).³² Loss of E-cadherin releases

β -catenin into the cytoplasm, where it is normally proteolytically degraded by a destruction complex including glycogen synthase kinase (GSK)-3 β . Inactivation of GSK-3 β , for example by active WNT signalling or TGF- β , prevents the degradation of β -catenin, resulting in nuclear translocation and transcriptional activation. Active β -catenin, especially when bound to co-activator CREB-binding protein (CBP), promotes the expression of E-cadherin repressors such as Snail and Slug as well as various mesenchymal genes, including fibronectin, EGF receptor (EGFR) and VEGF, which may contribute to airway wall remodelling.²² The initial induction of a mesenchymal phenotype enables epithelial repair, promoting cell migration and proliferation. After this, cells differentiate into a pseudostratified epithelial layer. In asthma, this repair process may be disturbed, which is supported by the observed increase in basal cell markers (eg cytokeratin 5 and p63)²² and repair markers (eg TGF- β and EGFR) in the airway epithelium, representing a more proliferative, less differentiated phenotype.²² HDM facilitates TGF- β -induced EMT in airway epithelial cells *in vitro*³³ and induces EMT-like features in the airway epithelium of mice.³⁴ In asthma, epithelial cells are more susceptible to undergo TGF- β -induced EMT.³⁵ The Notch signalling pathway also plays a crucial role in controlling the fate of airway epithelial cells upon injury. Although the mechanisms by which Notch signalling modulates epithelial homeostasis and responses to environmental insults are incompletely understood, various Notch (target) genes are differently expressed in healthy and asthmatic airway epithelium.^{36,37}

The inability to reconstitute epithelial barrier function may have important pathophysiological consequences, not only resulting in increased permeability to allergens, but also propagating pro-inflammatory and abnormal repair responses in the airways, leading to airway hyper-responsiveness and airway remodelling¹⁶ (Figure 3). Accordingly, airway epithelial damage has been shown to correlate with the severity of AHR.³⁸ Furthermore, the knock-down of E-cadherin *in vitro* resulted in EGFR activation and pro-inflammatory responses.³² Upon loss of E-cadherin *in vivo*, the loss of ciliated cells was accompanied by spontaneous goblet cell metaplasia and infiltration of eosinophils and dendritic cells.²² These features may at least in part be mediated by activation of β -catenin, as inhibition of β -catenin downstream activity attenuated airway inflammation, smooth muscle thickness, subepithelial fibrosis, hyper-responsiveness and goblet cell metaplasia in mouse models of asthma.³⁹ Moreover, we recently demonstrated that inhibition of β -catenin/CBP signalling not only improves epithelial barrier function, but also attenuates HDM-induced airway epithelial pro-inflammatory responses *in vitro*.⁴⁰

3 | ENVIRONMENTAL RISK FACTORS AND EPITHELIAL BARRIER DYSFUNCTION IN ASTHMA

As described above, the development of asthma results from the interaction between genetic and environmental factors. Various *in vitro* studies have shown that allergens can disrupt the airway

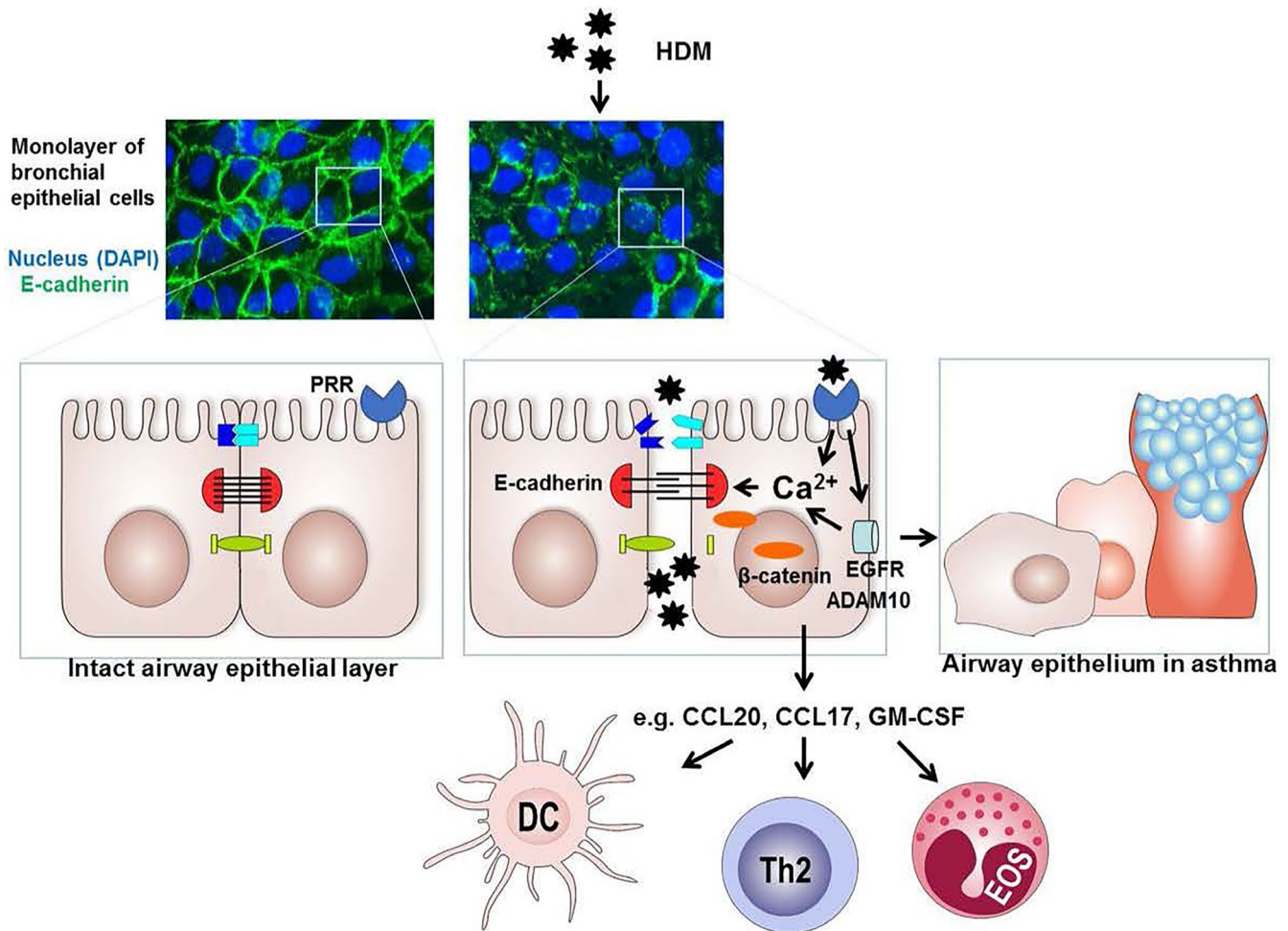


FIGURE 3 Proposed model of house dust mite (HDM)-induced airway epithelium barrier dysfunction. Allergens including HDM can directly cleave epithelial junctions proteolytically or act on various pattern recognition receptors (PRRs), including PAR-2, C-type lectins (CLR) and purinergic receptors. Their activation can induce degradation and/or delocalization of junctional proteins, including E-cadherin, in which intracellular Ca^{2+} signalling and subsequent activation of calpain may be involved and epidermal growth factor receptor (EGFR) activation.¹⁶¹ EGFR can activate ADAM10, a sheddase of E-cadherin as well as CCL20.⁴⁰ In addition, EGFR signalling can induce secretion of pro-inflammatory mediators, such as CCL20, CCL17 and GM-CSF that attract and/or activate dendritic cells (DCs), Th2 cells and eosinophils (EOS).²² When epithelial repair and re-differentiation is impaired, persistent loss of E-cadherin can result in activation of β -catenin-mediated programs that cause further loss of epithelial characteristics, induction of a more basal/mesenchymal phenotype as well as goblet cell hyperplasia, with loss of ciliated cells, as is also characteristic of the epithelial phenotype in asthma

epithelial barrier.⁴¹ Exposure of cultured airway epithelial cells to proteolytically active allergens from house dust mites (eg Der p1), ragweed, white birch, grass and pollen can lead to the cleavage of the junctional proteins.²² Furthermore, house dust mite (HDM), cockroach, fungi and mould extracts have been shown to disrupt epithelial junctions via activation of PAR-2 and downstream signalling.⁴² Accordingly, exposure of human airway epithelial cells to HDM induces rapid, transient reduction in epithelial barrier function,³³ concomitant with delocalization of junctional proteins (Figure 3). Submerged cultures of airway epithelial cells from mild/moderate asthma patients were more susceptible to HDM-induced barrier dysfunction than healthy subject-derived cultures. Surprisingly, this was independent of serine and cysteine proteases.^{43,44} Yet to be identified PRRs coupled to Ca^{2+} /calpain-dependent disruption of epithelial junctions may be involved.⁴³ In

addition to direct effects of allergens, allergic sensitization may lead to epithelial barrier dysfunction as consequence of type-2 mediated airway inflammation associated with atopic asthma. Both Th2 cells and ILC2 may contribute to the compromised epithelial barrier function through IL-13 secretion, which induces many features of the airway epithelium in asthma, including mucus production, and has been reported to disrupt airway epithelial barrier function in vitro.^{45,46} In fact, Th2-derived IL-13 and IL-4 and type-2 driving cytokine TSLP⁴⁷ have been shown to decrease barrier integrity in air-liquid interface (ALI) cultured primary airway epithelial cells from healthy subjects, with delocalization of TJ proteins.⁴⁸ This was not observed in cultures derived from asthma subjects, in which barrier function was already compromised at baseline.⁴⁸ This may reflect cell-intrinsic loss of airway epithelial

cells in asthma to re-differentiate and form an effective barrier upon ALI culture in vitro, as proposed previously.²

In addition to allergens, early-life sensitization to lower respiratory viral infections is an important environmental risk factor for developing asthma in childhood, with the highest risk for progression to persistent asthma when these environmental exposures coincide.⁴⁹ Two major respiratory viruses, rhinovirus (RV) and respiratory syncytial virus (RSV), bind to specific receptors on the airway epithelium, for example cadherin-related family member 3 (CDHR3) and ICAM-1 for RV⁵⁰ and CX3CR1 for RSV.⁵¹ Upon internalization, uncoating and replication, the virus is recognized by TLR3 and RIG-I like helicase, inducing production of anti-viral type-I interferons (IFNs), which eradicate pathogens and promote pro-inflammatory cytokine release. Impaired epithelial barrier function is accompanied by compromised IFN responses in asthma, resulting in increased viral replication upon rhinovirus infection compared to nonasthma-derived epithelial cultures.⁵² Exposure of airway epithelial cells to double-stranded RNA or infection with RV or RSV in vitro induces upregulation of TSLP^{53,54} and may thus support type-2 mediated inflammation. This may further impair epithelial barrier function in a vicious circle, viral exposure causing disruption of epithelial cell-cell contacts.^{55,56} RV has been shown to disrupt TJ integrity in human bronchial epithelial cell lines and ALI-differentiated primary cultures via loss of ZO-1 from TJs and airway epithelial cells cultures from healthy and asthmatic children, with more pronounced and sustained effects in asthmatic-derived cultures.⁵⁷

Other environmental factors that may impact on epithelial integrity are those associated with nonatopic forms of asthma, for example noneosinophilic, neutrophilic asthma. Besides viral infections, these include smoking⁵⁸ and bacterial colonization.²¹ Smoke exposure is well known to cause airway epithelial barrier dysfunction by disruption epithelial junctions.⁵⁹ Indirectly, smoking-induced Th17-mediated inflammation can reduce epithelial barrier function through Th17 cytokine IL-17.⁵⁸ As colonization of the respiratory tract with bacteria, for example *Streptococcus pneumoniae*, *Haemophilus influenzae* or *Moraxella catarrhalis*, may increase the risk of asthma, it is of relevance that also bacteria can cause epithelial barrier dysfunction, as demonstrated for infection with *S pneumonia* in a bronchial epithelial cell line.⁶⁰

Finally, environmental pollutants such as particulate matter and ozone as well as household cleaning products may contribute to the development and/or worsening of asthma⁶¹ and can disrupt the epithelial barrier. Particulate matter has been shown to attenuate ciliary beat frequency in bronchial epithelial cells and degrade TJ proteins in lung epithelial cells.⁶² Diesel exhaust particles decreased the expression of TJ proteins and epithelial resistance in primary nasal epithelial cells.⁶³ Ozone was reported to cause rapid disruption of the epithelial barrier with increased permeability and diminished expression of TJ and AJ proteins in the absence of IL-33.⁶⁴ Of interest, also laundry detergents were recently shown to compromise human bronchial epithelial integrity by disruption

of tight junctions and may thus contribute to the development of asthma.⁶⁵

4 | GENETIC FACTORS AND THE EPITHELIAL BARRIER IN ASTHMA

As mentioned above, in addition to environmental factors, a heredity component contributes to disease risk, with 35%-95% of susceptibility thought to involve genetic factors. Positional cloning and more recently genome-wide association studies (GWAS) have been highly successful in identifying risk alleles and loci for asthma and related phenotypes.⁶⁶

Expression quantitative trait loci (eQTL) studies in human bronchial epithelial cells and bronchial alveolar lavage identified that risk alleles regulate highly relevant genes involved in epithelial function, for example *IL1RL1*, *IL33*, *TSLP*, *HLA-DQB1*, *CDHR3*, *ZTB10*, *Corf30*, *DEX1* and *GSDMB* levels.⁶⁷ Similarly, Luo and colleagues combined asthma GWAS results and small and large airway epithelial eQTL data to demonstrate enrichment of airway epithelial eQTLs.⁶⁸ This supports the barrier hypothesis, where genetic alterations influence the ability of the skin and epithelial tissues to form a protective barrier from, for example pathogens and allergens.¹ The finding that the majority of genetic variants associated with risk of developing asthma is shared risk factors for the development of atopic dermatitis and allergic rhinitis⁶⁹ further underlines this. Selected genes identified through asthma genetic studies and implicated in epithelial cell function are outlined in Table 1. Genetic changes in the epithelium may thus be important in mediating several aspects of relevance to asthma, including the inflammatory environment, for example *IL33*, *TSLP*, *IL1RL1*, responses to pathogens, for example *CDHR3*, mucociliary clearance, for example *MUC5AC*, *KIF3A*, *EFHC1* and cell homeostasis and epithelial integrity, including proliferation, migration, cell-cell adhesion, apoptosis and repair, for example *PCDH1*, *SMAD3*, *GSDMB*, *ORMDL3* and *PLAUR*.

While a discussion of all these genes is beyond this review, it is important to highlight selected genes particularly implicated in barrier function. In the GWAS of atopic dermatitis followed by asthma, two genes thought to be involved in ciliary function were implicated, that is *KIF3A* and *EFHC1*.⁷⁰ These genes encode for Kinesin Family Member 3A and EF-hand domain containing protein 1, respectively. *KIF3A* is thought to function as a molecular motor transporting molecules along microtubules and has also

¹The shared genetic origin of asthma, rhinitis and eczema was recently analysed in detail.¹³³ This approach revealed a striking overlap in risk SNPs between these three allergic disorders, with limited disease-specific polymorphisms. The study identified a total of 132 plausible target genes, which were enriched for expression in blood and lung tissue.¹³³ These results clearly indicate that susceptibility to allergic diseases is mediated by at least in part shared biological mechanisms. Loss of epithelial barrier function has indeed been postulated as a central mechanism in allergic rhinitis¹³⁴ and eczema¹³⁵ as well, with loss of function variants in epidermal protein filaggrin being identified as major predisposing factor of atopic dermatitis.¹³⁶ In addition, GWAS studies have identified epithelial junction protein Desmoglein 1 as susceptibility gene for eosinophilic esophagitis.¹³⁷

TABLE 1 Selected genes identified through genetic studies of asthma implicated in airway epithelial cell homeostasis which may impact barrier properties and inflammation

Chrs	Gene Reported variants	Main Asthma Phenotype(s)	Suggested role in HBEC homeostasis/epithelial gene expression	References
2q12.1	^a <i>IL1RL1</i> <i>rs3771166</i>	Asthma, Asthma + Exacerbation, moderate-severe asthma	IL33 receptor, regulates inflammation. Important in innate immune responses including responses to viruses and Type 2 inflammation. Expressed in HBEC	74,76,138,139
5q22.1	^a <i>TSLP</i> <i>rs1043828</i>	Asthma, Asthma + Hay fever, moderate-severe asthma	Can drive induction of allergic responses by effects on several cell types including dendritic cells. Regulates an IL-13-dependent increase in bronchial epithelial cell proliferation	138,140-143
5q31.1	<i>KIF3A</i> <i>rs17690965</i>	Atopic Dermatitis followed by Asthma	Molecular motor that transports molecules along microtubules, role in ciliary function. Role in epithelial apoptosis and inflammation	70,71,144
5q31.3	<i>PCDH1</i> <i>rs3797054</i> <i>rs3822357</i>	Airway hyper-responsiveness	Epithelial adhesion, differentiation, barrier formation	78,79,145
6p12.2	<i>EFHC1</i> <i>rs9357733</i>	Atopic Dermatitis followed by Asthma	Contains an EF-hand motif which is able to bind Ca ²⁺ ions. Involved in ciliary function	70,72,73
7q22.3	^a <i>CDHR3</i> <i>rs6967330</i>	Asthma + Exacerbation	Epithelial polarity and cell-cell interactions. Receptor for Rhinovirus C, the most common respiratory virus associated with exacerbations in asthma. Cys529Tyr regulates viral entry	76,77,146
9p24.1	^a <i>IL33</i> <i>rs1342326</i>	Asthma, Asthma + Exacerbation, moderate-severe asthma	Epithelium-derived cytokine alarmin, regulates inflammation via interactions with ST2/IL1RL1 on several inflammatory cells. Type 2 inflammation, viral exacerbation. Also activates HBEC via ST2/IL1RL1	74,76,138,147,148
11p15.5	^a <i>MUC5AC</i> <i>rs11603634</i>	Moderate-Severe asthma	Oligomeric mucus/gel-forming, a pathogenic mucin linked to allergic airway hyper-reactivity. Elevated in bronchial epithelial cell brushing from severe asthma patients	74,75
15q22.33	<i>SMAD3</i> <i>rs744910</i>	Asthma, Asthma + Hay fever	Signalling intermediate in the TGF- β_1 induced epithelial-mesenchymal transition	69,74,75,139,149,150
17q21.1	^a <i>GSDMB</i> <i>rs7216389</i>	Asthma, childhood asthma + exacerbations, Asthma + Hay fever, childhood asthma, moderate-severe asthma	Member of gasdermin-domain containing protein family, elevated in the airway epithelium in asthma and in mice increased expression led to spontaneous, remodelling and airway hyper-responsiveness. Epithelial cell pyroptosis	76,82,83,140,151
17q21.1	<i>ORMDL3</i> <i>rs7216389</i>	Asthma, childhood asthma + exacerbations, Asthma + Hay fever, childhood asthma, moderate-severe asthma	Orosomucoid-like protein isoform 3, regulates endoplasmic reticulum (ER) stress. Implicated in epithelial barrier formation, pro-remodelling phenotype in vivo and in vitro. Sphingolipid regulation	69,76,138,151-156
19q23	<i>PLAUR</i> <i>rs4493171</i> <i>rs2356338</i> <i>rs2239372</i>	Asthma, decline in lung function	Regulates activation of urokinase plasminogen activator (uPA), triggering the plasminogen/plasmin activation cycle. Epithelial repair, proliferation, pro-remodeling phenotype	157-160

Note: For a comprehensive review of asthma related phenotypes, these loci have been associated with see recent reviews.^{54,142}

Abbreviations: *CDHR3* cadherin-related family member 3; *EFHC1*, EF-hand domain containing protein 1; *IL1RL1*, Interleukin 1 Receptor Like 1; *IL33*, Interleukin 33; *KIF3A*, Kinesin Family Member 3A; *MUC5AC*, Mucin 5AC, Oligomeric Mucus/Gel-Forming; *ORMDL3*, *ORMDL* sphingolipid biosynthesis regulator 3; *PCDH1*, Protocadherin 1; *PLAUR*, plasminogen activator, urokinase receptor; *SMAD3*, *GSDMB*, gasdermin B; *TSLP*, Thymic stromal lymphopoietin.

^aIdentified in eQTL studies using asthma risk alleles in airway epithelium.

been implicated in ciliary function in epithelial cells. Interestingly, mice deficient in *KIF3A* in the epithelium is more susceptible to allergen-induced inflammation and epithelial cell apoptosis in an allergic airway model.⁷¹ Mutations within *EFHC1* have been

associated with juvenile myoclonic epilepsy via a role in motile cilia and in regulating calcium channels.^{72,73} Importantly, *EFHC1* may be of relevance in cilia function in the airways, being expressed in the tracheal epithelium in mice. Therefore, *KIF3A* and *EFHC1*

may in part contribute to poor allergen and mucus clearance from the airways. Recently, in a GWAS of moderate-severe asthma, a signal on chromosome 11 was identified that regulates expression of *MUC5AC*,⁷⁴ the main mucin found in the airways and linked to severe asthma,⁷⁵ emphasizing abnormal mucociliary clearance. In a GWAS of asthma with exacerbation, polymorphisms spanning *CDHR3* were identified, including coding change Cys529Tyr.⁷⁶ *CDHR3* is involved in epithelial polarity and cell-cell interactions. As described above, recent data suggest that *CDHR3* is the receptor for RV-C and the Cys529Tyr mediates this interaction providing a putative mechanism. Interestingly, *CDHR3* knock-down also influences transepithelial resistance.⁷⁷ The *PCDH1* gene also encodes an adhesion molecule localizes to cell-cell junctions especially in differentiated airway epithelial.^{78,79} *PCDH1* has a dual function, supporting epithelial barrier function⁷⁹ and regulating TGF- β /SMAD3 signalling.⁸⁰ Hence, *PCDH1* may serve as cellular switch between TGF- β driven EMT and epithelial repair vs epithelial differentiation and barrier formation. The gene *ORMDL3* regulates cytosolic Ca²⁺ entry by the sarco-endoplasmic reticulum (ER) Ca²⁺ ATPase (SERCA) pump, which we previously showed to be involved in HDM-induced epithelial barrier dysfunction.⁴³ Moreover, the *ORMDL3* gene product was recently shown to support RV replication in epithelia cells.⁸¹ Finally, *GSDMB* encodes gasdermin B, which is a member of the gasdermin-domain containing protein family linked to epithelial apoptosis. Recently, it has been shown that *GSDMB* is elevated in the airway epithelium in asthma. In mice, increased expression led to spontaneous airway hyper-responsiveness,⁸² and the *GSDMB* protein induces pyroptotic cell death in airway epithelium.⁸³ Although several asthma genes have been shown to act on airway epithelial function, a clear endotype of asthma driven by the loss of epithelial barrier specifically due to these asthma-associated polymorphisms has not been identified. However, it is important to note that the asthma phenotypes associated with these selected genetic signals include bronchial hyper-responsiveness (*PCDH1*, *PLAUR*, *ORMDL3/GSDMB*) and asthma exacerbation (*IL33*, *IL1RL1*, *CDHR3*, *ORMDL3/GSDMB*), potentially directly by effects on bronchial epithelial function. Similarly, genetic signals associate with blood eosinophil counts (*IL33*, *IL1RL1*, *TSLP*), time to asthma onset (*IL33*, *IL1RL1*, *ORMDL3/GSDMB*), atopic march (*KIF3A*, *EFHC1*) and self-reported allergy (*IL33*, *ORMDL3/GSDMB*, *IL1RL1*), potentially via an indirect mechanism by the production of cytokines from bronchial epithelial cells leading to type-2 inflammation.^{84,85} The gene signature of the type-2 high endotype of asthma, characterized by increased blood and BAL eosinophils and basal membrane thickness, lower PC20 threshold and a better lung function improvement after inhaled corticosteroids, identifies this asthma subphenotype as a steroid responsive signature of epithelial cells in asthma,⁸⁶ indicating the relevance of the airway epithelial phenotype in the disease. Two of these genes (*CLCA1* and *SERPINB2*) are predominantly expressed in goblet cells, indicating that a true asthma endotype reflecting loss of epithelial barrier function is yet to be identified.

5 | EPIGENETIC FACTORS AND THE EPITHELIAL BARRIER IN ASTHMA

As outlined, asthma-associated polymorphisms can directly alter a gene's coding sequences, thereby altering protein function and, consequently, the biology of the airway epithelium. More frequently, however, asthma-associated SNPs have a regulatory effect on gene expression, acting as eQTLs. A recent study shows that almost 59% of the asthma-associated SNPs identified by the Trans-National Asthma Genetic Consortium (TAGC) study is an eQTL in nasal epithelium and that in almost 90% of these cases, this effect is mediated by CpG methylation.⁸⁷ Clearly, epigenetic regulation of gene expression is highly relevant to the translation of disease susceptibility into altered biology of the airway epithelium. Epigenetic marks are highly responsive to environmental exposures relevant to asthma inception or exacerbations, further underscoring the relevance of epigenetics for understanding asthma pathophysiology.⁸⁸⁻⁹¹ Three main types of epigenetic marks can be distinguished: CpG methylation, histone modifications and small, noncoding RNAs.

Differences in DNA methylation patterns between asthma patients and healthy controls have been studied in (epi)genome-wide analyses (EWAS). As CpG methylation patterns are also highly cell-type dependent, cell-type composition of the biological sample is an important cofounder of EWAS analyses.⁹² Therefore, we here focus on the studies in upper (nasal) airway brushes, that mainly consist of epithelial cells,⁹³ and which were shown to have the best correlation to the DNA methylation patterns in bronchial epithelial cells.⁹⁴ In four studies reported to date,⁹⁵⁻⁹⁸ methylation of the *GJA4* gene, encoding Connexin37, a protein capable of forming heterotypic gap junctions, was consistently found to be reduced, although an association with altered gene expression levels was not detected.⁹⁷ Other genes relevant to epithelial barrier function (*CDH26*, *CDHR3*) were also found differentially methylated.^{95,97} In addition to *CDHR3*, another genes selectively expressed in ciliated epithelial cells, *ZMYND10*⁹¹ was found to be differentially methylated, which is consistent with an altered airway epithelial composition in asthma. Only one study to date analysed CpG methylation in bronchial biopsies from asthma patients and healthy controls, but this analysis was focussed on methylation patterns associated with remission of asthma.⁹⁹

Several studies have looked specifically into DNA methylation changes induced by relevant environmental factors, which affect epigenetic regulation of asthma genes.¹⁰⁰⁻¹⁰² RV infection-induced DNA methylation patterns differed between nasal epithelial cells from asthmatic children and healthy controls, with enrichment for loci carrying genes involved in cell-cell and cell-matrix interactions.¹⁰⁰ Similarly, RV infection-induced DNA methylation patterns differed between nasal epithelial cells from asthmatic adults and healthy controls.¹⁰² In children who had early-life rhinovirus-induced wheezing, specific DNA methylation patterns associated with asthma later in life were identified, including increased methylation at the *SMAD3* locus.¹⁰¹ Finally, one elegant study analysed the effects of diesel exhaust particle exposure and (segmental) allergen challenge on DNA methylation patterns in airway epithelial cells

obtained by bronchial brushing both 48 hours after exposure and after 4 weeks.¹⁰³ While both allergen challenge and diesel exhaust particle exposure induced DNA methylation changes in airway epithelial cells, the most pronounced effects were observed in individuals who received an allergen challenge 4 weeks prior to exhaust particles exposure, with genes annotated to cell adhesion being most enriched in the differentially methylated regions.¹⁰³ These data clearly indicate the relevance of environmental exposures for epigenetic regulation of gene expression in the airway epithelium and therefore for asthma. As the epigenetic signature of the airway epithelium integrates genetic susceptibility with the life history of relevant environmental exposures, it can be expected to be a strong biomarker for asthma development or even treatment response.⁹⁸

In addition to DNA methylation, epithelial gene expression can be modulated by miRNAs, which are small noncoding RNAs of about 21-25 nucleotides that can bind to target mRNAs, leading to mRNA degradation or translational repression. Altered miRNA profiles have been observed in airway epithelium of asthma patients compared to healthy controls.^{104,105} Several of the differentially expressed miRNAs modulate the expression of genes implicated in epithelial barrier function, repair, proliferation or apoptosis. For example, miR-744, miR-19a, miR-221, miR-27a, miR-128 and miR-34/449 are differentially expressed in bronchial epithelial cells from asthma patients compared to controls and have been described to modulate cell proliferation, apoptosis and

ciliogenesis by targeting TGF- β 1, TGF- β 2, SIRT1, SMAD2 (target of both miR-27a and miR-128) and Cp110, respectively (Figure 4).¹⁰⁶⁻¹¹¹ Of interest, the discussed miRNAs were not all identified in patients with the same disease severity. The differential expression of miR-744, miR-221 and miR-19 was shown in HBEC from severe asthma patients with an atopic and eosinophilic phenotype,¹⁰⁶⁻¹⁰⁸ whereas miR-34/449 was identified in mild atopic asthma.¹⁰⁵ While miR-19 was higher in severe atopic eosinophilic asthma, its expression in mild asthma was similar as in healthy controls.¹⁰⁸ Moreover, a miR-19 mimic induced more proliferation in HBEC from severe asthma patients than in control-derived HBEC. The expression of miR-744 was reduced in HBEC from severe asthma, but tended to increase in mild asthma compared to healthy controls.¹⁰⁶ These observations suggest that the impact of the miRNAs on the epithelium can differ with disease severity; however, this requires further investigation. It is also unknown whether miRNAs that affect epithelial barrier in asthma modify the treatment response, but for miR-34/449, miR-19 and miR-223, there were no correlations between miRNA expression and treatment with inhaled corticosteroids.^{105,108,112} Furthermore, miR-155 and miR-223 have been implicated in EMT by altering mesenchymal markers,^{112,113} although their exact role in asthma airway epithelial cells is unknown. Also, differential expression of miR-3162, miR-125b, miR-223 and miR-330 in blood or sputum from asthma patients, possibly transported in

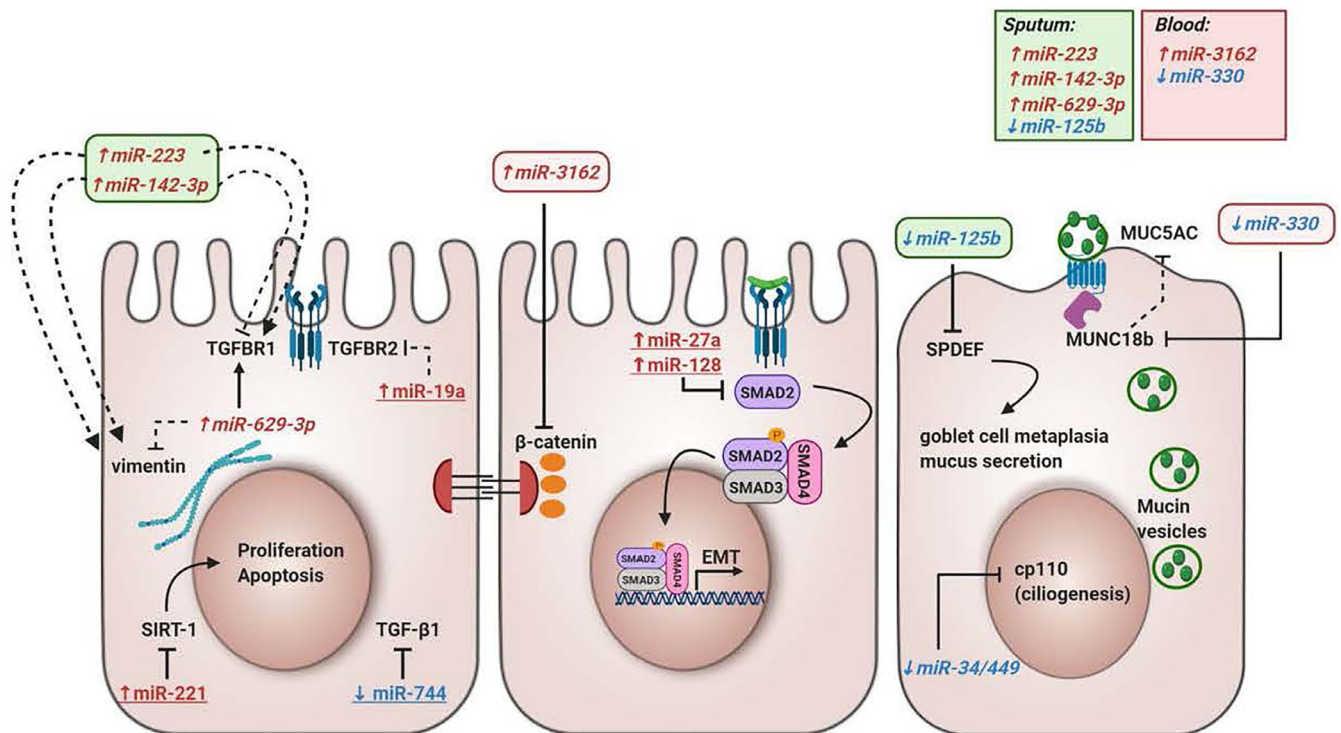


FIGURE 4 The influence of microRNAs in epithelial barrier function. This overview illustrates miRNAs that are differentially expressed in asthma and could contribute to epithelial barrier dysfunction in asthma. miRNAs coloured in red with upward arrow are upregulated in asthma, and miRNAs coloured in blue with downward arrow are downregulated in asthma. miRNAs with an underscore were measured in bronchial epithelial cells, and miRNAs in italic were measured in sputum or blood from asthma patients and controls. Black lines ending with a perpendicular line indicate inhibitory effects, and black lines ending with an arrow indicate a stimulatory effect. Full lines indicate direct effects, and half-full lines indicate indirect effects. EMT, epithelial-mesenchymal transition; LPS, lipopolysaccharide; SIRT-1, Sirtuin 1; SPDEF, SAM Pointed Domain Containing ETS Transcription Factor; TGF- β 1, Transforming Growth Factor Beta 1; TGFBR1, Transforming Growth Factor Beta Receptor 1

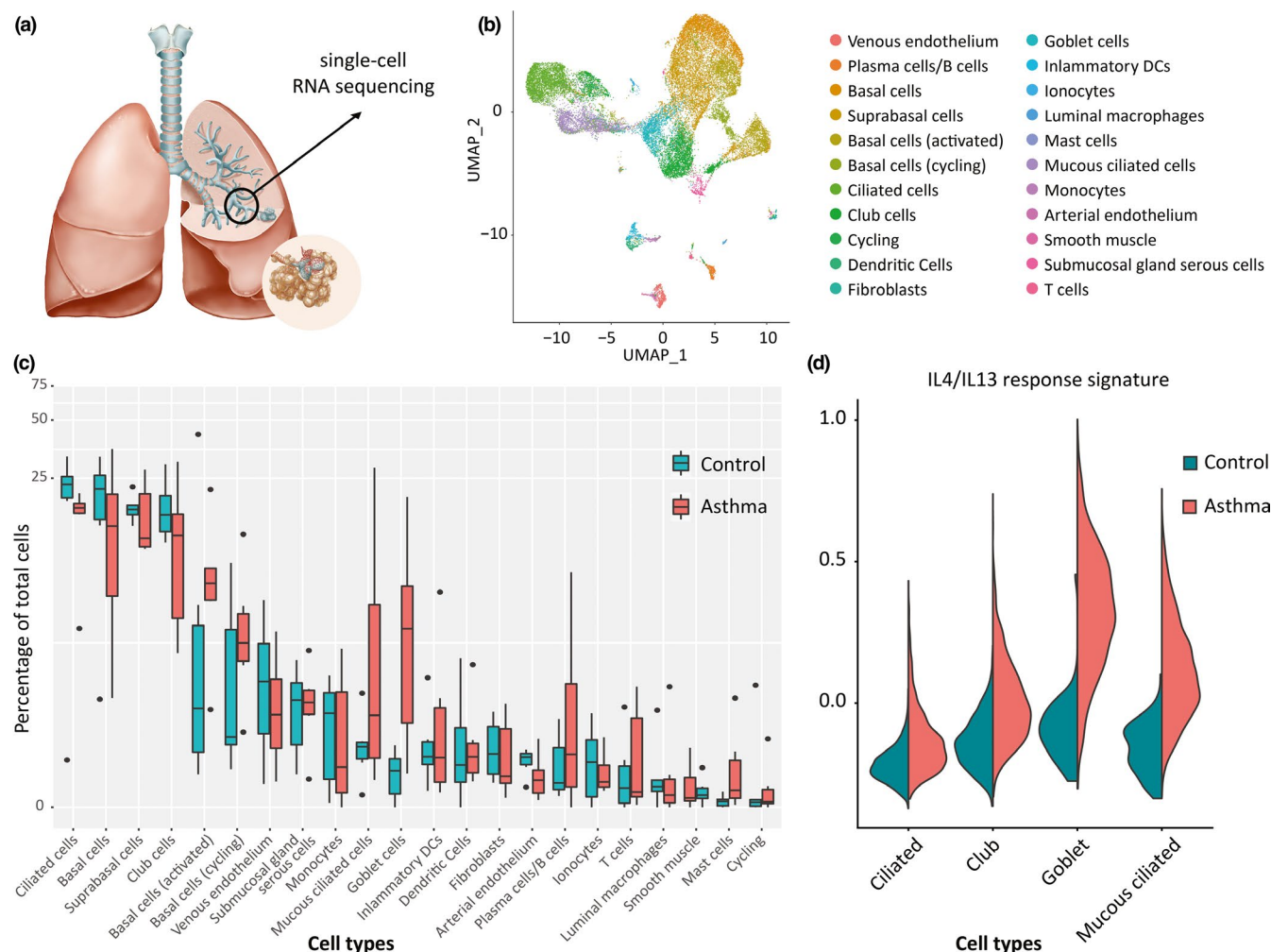


FIGURE 5 Analysis of airway epithelial cells in asthma using single-cell RNA sequencing. (A) Airway wall biopsies are obtained from 5th–7th generation airway through bronchoscopy, followed by tissue digestion and scRNA-Seq analysis. (B) Unsupervised clustering identifies a large number of epithelial and nonepithelial cell types from airway wall. (C) Comparison of relative frequencies of cell types identified increased number of goblet cells and mucous ciliated cells, a novel, disease-associated ciliated epithelial cell phenotype and increased numbers of mast cells and B cells in asthma compared to healthy. (D) Analysis of epithelial cell subset-specific transcriptomes reveals presence of IL4/IL13-induced gene transcription in goblet cells and mucous ciliated cells, specifically in asthma

extracellular vesicles (EVs), can affect the epithelial barrier function by influencing the expression of, for example β -catenin, vimentin and mucins^{112,114–117} (Figure 4). Moreover, airway epithelium itself can communicate by secreting EVs. Epithelial-derived EVs play a role in airway homeostasis and airway epithelial remodelling by inducing amongst others mucin hypersecretion.¹¹⁷ The miRNA signature in epithelial-derived EVs is altered upon stimulation with IL-13 compared to EVs obtained from untreated bronchial epithelial cells.¹¹⁸ However, it is unclear whether similar changes can be observed in the miRNA profile of epithelial-derived EVs from asthma patients and whether those changes in miRNA expression affect the epithelial barrier. In asthma murine models, lower miR-448-5p and higher miR-106a levels were expressed in lung tissue compared to control mice.^{111,119} In vitro up- or downregulation of these miRNAs resulted in altered protein levels of E-cadherin, fibronectin, collagen IV and vimentin in bronchial epithelial cells after TGF- β 1 stimulation.^{111,119}

Together, the interaction between genetic factors and epigenetic regulatory mechanisms may contribute to abnormalities in the airway epithelium and the development of asthma. Understanding these mechanisms may lead to identification of novel targets in airway epithelium for asthma intervention.

6 | NEW INSIGHTS FROM SINGLE-CELL SEQUENCING DATA

Further insight into the mechanisms of asthma and the role of the airway epithelium may come from technological advances. These include recent progress in single-cell RNA sequencing (scRNA-Seq), greatly enhancing the granularity at which the cellular composition of tissues can be characterized.¹²⁰ In addition, scRNA-Seq allows the description of molecular cell phenotypes (or cellular “states”), predict

cell-cell interactions and cell state transitions at unprecedented detail. Using these technologies to study lung tissue, the ionocyte has recently been discovered as novel airway epithelial cell.^{6,121} The pulmonary ionocyte is a relatively rare cell type, characterized by expression of ion transporters including V-ATPase and the cystic fibrosis *CFTR* gene, indicating a role in regulation of ion and fluid transport across the airway epithelium as well as pH of the mucosal surface. While the application of these technologies to identify all cell types of the healthy human body, including lung, as pursued by the Human Cell Atlas consortium^{122,123} are exciting, these novel techniques also hold great potential to increase our understanding of disease pathogenesis. A first description of the cellular landscape of healthy airway wall and the changes thereof in patients with childhood-onset allergic asthma identified a unique disease-associated airway epithelial cell state, as well as a remarkable shift in cell-cell communication.⁹³ Various known changes in the asthmatic airway wall were recapitulated by scRNA-Seq analysis, such as increased numbers of airway smooth muscle cells, goblet cells and mast cells, underscoring the validity of the approach (Figure 5). The study identified a subset of ciliated epithelial cells in asthma that was characterized by expression of *MUC5AC* and other goblet-cell genes, a molecular phenotype of ciliated cells that was not observed in healthy airway walls.⁹³ This so-called mucous ciliated cell type was mapped to the ciliated differentiation trajectory. Interestingly, these mucous ciliated cells as well as the goblet cells in asthma lacked expression of Notch target genes, but instead expressed a signature of IL4/IL13-induced genes, which was in contrast to the (few) goblet cells present in airway wall from healthy donors. Therefore, mucous ciliated cells were proposed to represent a transitional cell state in the ciliated lineage—induced by IL-4/IL-13 signalling—leading to a mucous cell phenotype that contributes to mucous cell metaplasia in asthma.⁹³ As these pathogenic Th2 effector cells were exclusively observed in asthmatic airway walls, and the mucous ciliated cells showed evidence of IL-13-induced gene transcription, it seems likely that Th2 cytokines are responsible for these cell state changes in the asthmatic airway epithelium. Indeed, Th2 effector cells were found to dominate the predicted airway wall cell-cell interactome in asthma.⁹³ We previously reported that Th2 cytokine production was suppressed by primary bronchial epithelial cells, a regulatory mechanism that seems to be attenuated in asthma.¹²⁴ The airway wall cellular interactome analysis also identified cell-cell communication between epithelial cells and other structural or tissue-resident cells, characterized by growth factor signalling. This interaction was present in healthy airway wall, but lost in asthma.⁹³ Therefore, it will be of great interest to study which cell-cell interactions observed in healthy airway wall maintain the barrier function of airway epithelium, and how these can be restored in the asthmatic condition. Future studies in larger cohorts of patients and controls, as well as in a larger variety of asthma subphenotypes also hold the promise of charting the cellular changes and causal gene regulatory networks underlying a wider variety of asthma endotypes. Moreover, analysis of matched scRNA-Seq data sets from airway wall biopsies, bronchial brushes and nasal brushes will allow design of novel biomarkers for disease activity or treatment response using less invasive methodologies.

7 | THERAPEUTIC STRATEGIES TO IMPROVE BARRIER FUNCTION

Targeting the airway epithelial barrier may constitute a promising novel therapeutic strategy for asthma and related allergic diseases. Intrinsic abnormalities in the airway epithelium of asthmatics culminate in inappropriate immune and inflammatory responses as well as defective repair. Genetically supported targets could double the success rate in clinical development.

A number of pathways involved in maintaining or restoring epithelial barrier function are targetable; these include those (a) enhancing mucosal innate immunity, (b) decreasing epithelial permeability through effective assembly of TJ and AJ proteins and (c) restoring epithelial cell integrity by improving regeneration and regulating mucus production. Modulation of several developmental transcription factors has been shown to improve epithelial differentiation and as a consequence, barrier function. We recently demonstrated that inhibition of β -catenin/CBP signalling inhibits EMT and promotes recovery of epithelial barrier function through restoration of E-cadherin expression.^{40,80,125,126} Notch signalling appears to be intimately involved in regulating mucus cell fate and mucus release.¹²⁷ Recent studies from our laboratory and others have shown that modulating Notch signalling has a dramatic effect on mucus secretion.³⁷ In addition, Smad3 inhibitors may reverse airway epithelial abnormalities as observed in asthma, as reviewed previously.² Because of the described effects of type-2 cytokines on epithelial barrier function, we anticipate that new biologics may have beneficial effects on airway epithelial barrier function specifically in type-2 driven asthma; however, to the best of our knowledge, there are no studies yet that assessed this.

The majority of patients respond well to a combination of inhaled corticosteroids (ICS) and bronchodilators. Whether or not ICS have direct beneficial effects on epithelial health or barrier function is unclear. Although corticosteroids failed to prevent the TGF- β -induced downregulation of E-cadherin in a bronchial epithelial cell line,¹²⁸ findings in primary bronchial epithelial cells indicate that ICS protect against oxidative stress-induced epithelial barrier dysfunction.¹²⁹ However, asthma epithelium was found less responsive to ICS.¹²⁹ Oxidative stress as well as IL-17 may lead to ICS unresponsiveness by PI3K-dependent post-translational histone deacetylase (HDAC)2 modifications and proteasomal HDAC2 degradation.^{130,131} Strategies to restore ICS sensitivity could be beneficial in improving epithelial barrier function in asthma in combination with ICS, including the use of antioxidants or α -IL-17 antibodies.¹³² Endotype-specific therapies that have been recently developed to mitigate symptoms in patients refractory to conventional ICS-based therapy may largely have their impact through effects on immune/inflammatory components though.

8 | CONCLUDING REMARKS

The airway epithelial phenotype induced by the interaction of genotype and environment plays a central role in the pathogenesis of

asthma. Accumulating evidence indicates that multiple genetic variants associated with the risk of developing asthma in response to environmental factors regulate proteins of relevance to airway epithelial function, including roles in barrier function, inflammation, mucociliary clearance and homeostasis. In addition, alterations in epigenetic regulation contribute to abnormalities in the biology of the airway epithelium in asthma. Further insight into these regulatory mechanisms, for example by the use of scRNA-seq, holds promise for identifying patients likely to benefit from epithelial-focused therapies and the identification of targets for novel therapies strategies aimed at correcting dysfunctional epithelial barrier.

ACKNOWLEDGMENTS

We thank J. Eliasova (scientific illustrator) for support with the design of figures and M. Berg for support with creating the figures.

CONFLICT OF INTEREST

Dr Maes reports grants from Ghent University, Fund for Scientific Research Flanders (FWO; G053516N, G041819N, FWO-EOS project G0G2318N), during the conduct of the study; personal fees from GlaxoSmithKline, outside the submitted work, and is shareholder of Oryzon Genomics and of Mendelion Lifesciences SL; Prof. Nawijn reports grants from the Netherlands Lung Foundation (LF 14.020 and LF 18.226), during the conduct of the study. Outside of the submitted work, Prof. Sayers laboratory reports grants from Asthma UK, British Lung Foundation Nottingham University Hospitals, National Institute for Health Research, Medical Research Council, GlaxoSmithKline and Boehringer Ingelheim; Prof. Nawijn reports grants from GSK; Prof. Heijink reports grants from the Netherlands Lung Foundation (LF 15.017) and Boehringer Ingelheim.

ORCID

Irene H. Heijink  <https://orcid.org/0000-0002-1260-8932>

Virinchi N. S. Kuchibhotla  <https://orcid.org/0000-0002-4867-4026>

REFERENCES

1. The Global Asthma Report 2018; 2018. <http://www.globalasthma-report.org/>. Accessed January 14, 2020.
2. Heijink IH, Nawijn MC, Hackett TL. Airway epithelial barrier function regulates the pathogenesis of allergic asthma. *Clin Exp Allergy*. 2014;44(5):620-630.
3. Eder W, Ege MJ, von Mutius E. The asthma epidemic. *N Engl J Med*. 2006;355(21):2226-2235.
4. Dunican EM, Fahy JV. The role of type 2 inflammation in the pathogenesis of asthma exacerbations. *Ann Am Thorac Soc*. 2015;12(Suppl 2):S144-S149.
5. Svenningsen S, Nair P. Asthma endotypes and an overview of targeted therapy for asthma. *Front Med (Lausanne)*. 2017;4:158.
6. Montoro DT, Haber AL, Biton M, et al. A revised airway epithelial hierarchy includes CFTR-expressing ionocytes. *Nature*. 2018;560(7718):319-324.
7. Tata PR, Mou H, Pardo-Saganta A, et al. Dedifferentiation of committed epithelial cells into stem cells in vivo. *Nature*. 2013;503(7475):218-223.
8. Rawlins EL, Hogan BL. Ciliated epithelial cell lifespan in the mouse trachea and lung. *Am J Physiol Lung Cell Mol Physiol*. 2008;295(1):L231-L234.
9. Park KS, Wells JM, Zorn AM, et al. Transdifferentiation of ciliated cells during repair of the respiratory epithelium. *Am J Respir Cell Mol Biol*. 2006;34(2):151-157.
10. Turner J, Roger J, Fitau J, et al. Goblet cells are derived from a FOXJ1-expressing progenitor in a human airway epithelium. *Am J Respir Cell Mol Biol*. 2011;44(3):276-284.
11. Wills-Karp M. Allergen-specific pattern recognition receptor pathways. *Curr Opin Immunol*. 2010;22(6):777-782.
12. Lee TH, Song HJ, Park CS. Role of inflammasome activation in development and exacerbation of asthma. *Asia Pac Allergy*. 2014;4(4):187-196.
13. Kim SR, Park HJ, Lee KB, et al. Epithelial PI3K-delta promotes house dust mite-induced allergic asthma in NLRP3 inflammasome-dependent and -independent manners. *Allergy Asthma Immunol Res*. 2020;12(2):338-358.
14. Liu T, Zhou YT, Wang LQ, et al. NOD-like receptor family, pyrin domain containing 3 (NLRP3) contributes to inflammation, pyroptosis, and mucin production in human airway epithelium on rhinovirus infection. *J Allergy Clin Immunol*. 2019;144(3):777-787.e9.
15. Lambrecht BN, Hammad H. The airway epithelium in asthma. *Nat Med*. 2012;18(5):684-692.
16. Boxall C, Holgate ST, Davies DE. The contribution of transforming growth factor- β and epidermal growth factor signalling to airway remodelling in chronic asthma. *Eur Respir J*. 2006;27(1):208-229.
17. Fehrenbach H, Wagner C, Wegmann M. Airway remodeling in asthma: what really matters. *Cell Tissue Res*. 2017;367(3):551-569.
18. Lee CG, Ma B, Takyar S, et al. Studies of vascular endothelial growth factor in asthma and chronic obstructive pulmonary disease. *Proc Am Thorac Soc*. 2011;8(6):512-515.
19. Hackett TL, Singhera GK, Shaheen F, et al. Intrinsic phenotypic differences of asthmatic epithelium and its inflammatory responses to respiratory syncytial virus and air pollution. *Am J Respir Cell Mol Biol*. 2011;45(5):1090-1100.
20. Xiao C, Puddicombe SM, Field S, et al. Defective epithelial barrier function in asthma. *J Allergy Clin Immunol*. 2011;128(3):549-556.e12.
21. Papi A, Brightling C, Pedersen SE, Reddel HK. Asthma. *The Lancet*. 2018;391(10122):783-800.
22. Nawijn MC, Hackett TL, Postma DS, van Oosterhout AJ, Heijink IH. E-cadherin: gatekeeper of airway mucosa and allergic sensitization. *Trends Immunol*. 2011;32(6):248-255.
23. Heijink IH, Kies PM, Kauffman HF, Postma DS, van Oosterhout AJ, Vellenga E. Down-regulation of E-cadherin in human bronchial epithelial cells leads to epidermal growth factor receptor-dependent Th2 cell-promoting activity. *J Immunol*. 2007;178(12):7678-7685.
24. Tunggal JA, Helfrich I, Schmitz A, et al. E-cadherin is essential for in vivo epidermal barrier function by regulating tight junctions. *EMBO J*. 2005;24(6):1146-1156.
25. Hartsock A, Nelson WJ. Adherens and tight junctions: structure, function and connections to the actin cytoskeleton. *Biochim Biophys Acta*. 2008;1778(3):660-669.
26. de Boer WI, Sharma HS, Baelemans SM, Hoogsteden HC, Lambrecht BN, Braunstahl GJ. Altered expression of epithelial junctional proteins in atopic asthma: possible role in inflammation. *Can J Physiol Pharmacol*. 2008;86(3):105-112.
27. Hackett TL, de Bruin HG, Shaheen F, et al. Caveolin-1 controls airway epithelial barrier function. Implications for asthma. *Am J Respir Cell Mol Biol*. 2013;49(4):662-671.
28. Heijink IH, Brandenburg SM, Noordhoek JA, Postma DS, Slebos DJ, van Oosterhout AJM. Characterisation of cell adhesion in

- airway epithelial cell types using electric cell-substrate impedance sensing. *Eur Respir J*. 2010;35(4):894-903.
29. Tan HT, Hagner S, Ruchti F, et al. Tight junction, mucin, and inflammasome-related molecules are differentially expressed in eosinophilic, mixed, and neutrophilic experimental asthma in mice. *Allergy*. 2019;74(2):294-307.
 30. Post S, Heijink IH, Hesse L, et al. Characterization of a lung epithelium specific E-cadherin knock-out model: implications for obstructive lung pathology. *Sci Rep*. 2018;8(1):13275-14018.
 31. Ceteci F, Ceteci S, Zanucco E, et al. E-cadherin controls bronchial progenitor cells and onset of preneoplastic lesions in mice. *Neoplasia*. 2012;14(12):1164-1177.
 32. Hackett TL. Epithelial-mesenchymal transition in the pathophysiology of airway remodelling in asthma. *Curr Opin Allergy Clin Immunol*. 2012;12(1):53-59.
 33. Heijink IH, van Oosterhout A, Kapus A. Epidermal growth factor receptor signalling contributes to house dust mite-induced epithelial barrier dysfunction. *Eur Respir J*. 2010;36(5):1016-1026.
 34. Johnson JR, Roos A, Berg T, Nord M, Fuxe J. Chronic respiratory aeroallergen exposure in mice induces epithelial-mesenchymal transition in the large airways. *PLoS One*. 2011;6(1):e16175.
 35. Hackett TL, Warner SM, Stefanowicz D, et al. Induction of epithelial-mesenchymal transition in primary airway epithelial cells from patients with asthma by transforming growth factor-beta1. *Am J Respir Crit Care Med*. 2009;180(2):122-133.
 36. Kuchibhotla VN, Heijink IH. Join or leave the club: jagged1 and Notch2 dictate the fate of airway epithelial cells. *Am J Respir Cell Mol Biol*. 2020. <https://doi.org/10.1165/rcmb.2020-0104ED>. [Epub ahead of print].
 37. Reid AT, Nichol KS, Chander Veerati P, et al. Blocking Notch3 signaling abolishes MUC5AC production in airway epithelial cells from individuals with asthma. *Am J Respir Cell Mol Biol*. 2020;62(4):513-523.
 38. Laitinen LA, Heino M, Laitinen A, Kava T, Haahtela T. Damage of the airway epithelium and bronchial reactivity in patients with asthma. *Am Rev Respir Dis*. 1985;131(4):599-606.
 39. Kumawat K, Koopmans T, Gosens R. Beta-catenin as a regulator and therapeutic target for asthmatic airway remodeling. *Expert Opin Ther Targets*. 2014;18(9):1023-1034.
 40. Kuchibhotla V.N.S., Jonker M.R., de Bruin H.G., Noordhoek J.A., Knight D.A., Nawijn M.C., Heijink I.H.. Inhibition of β -catenin/CBP signalling improves airway epithelial barrier function and suppresses CCL20 release. *Allergy*. 2020;75:1786-1788. <https://doi.org/10.1111/all.14216>
 41. Heijink IH, Noordhoek JA, Timens W, van Oosterhout AJ, Postma DS. Abnormalities in airway epithelial junction formation in chronic obstructive pulmonary disease. *Am J Respir Crit Care Med*. 2014;189(11):1439-1442.
 42. Winter MC, Shasby SS, Ries DR, Shasby DM. PAR2 activation interrupts E-cadherin adhesion and compromises the airway epithelial barrier: protective effect of beta-agonists. *Am J Physiol Lung Cell Mol Physiol*. 2006;291(4):L628-L635.
 43. Post S, Nawijn MC, Jonker MR, et al. House dust mite-induced calcium signaling instigates epithelial barrier dysfunction and CCL20 production. *Allergy*. 2013;68(9):1117-1125.
 44. Post S, Nawijn MC, Hackett TL, et al. The composition of house dust mite is critical for mucosal barrier dysfunction and allergic sensitization. *Thorax*. 2012;67(6):488-495.
 45. Schmidt H, Braubach P, Schilpp C, et al. IL-13 impairs tight junctions in airway epithelia. *Int J Mol Sci*. 2019;20(13):3222.
 46. Sugita K, Steer CA, Martinez-Gonzalez I, et al. Type 2 innate lymphoid cells disrupt bronchial epithelial barrier integrity by targeting tight junctions through IL-13 in asthmatic patients. *J Allergy Clin Immunol*. 2018;141(1):300-310.e11.
 47. Dong H, Hu Y, Liu L, et al. Distinct roles of short and long thymic stromal lymphopoietin isoforms in house dust mite-induced asthmatic airway epithelial barrier disruption. *Sci Rep*. 2016;6:39559.
 48. Wawrzyniak P, Wawrzyniak M, Wanke K, et al. Regulation of bronchial epithelial barrier integrity by type 2 cytokines and histone deacetylases in asthmatic patients. *J Allergy Clin Immunol*. 2017;139(1):93-103.
 49. Kusel MM, de Klerk NH, Keadze T, et al. Early-life respiratory viral infections, atopic sensitization, and risk of subsequent development of persistent asthma. *J Allergy Clin Immunol*. 2007;119(5):1105-1110.
 50. Basnet S, Palmenberg AC, Gern JE. Rhinoviruses and their receptors. *Chest*. 2019;155(5):1018-1025.
 51. Johnson SM, McNally BA, Ioannidis I, et al. Respiratory syncytial virus uses CX3CR1 as a receptor on primary human airway epithelial cultures. *PLoS Pathog*. 2015;11(12):e1005318.
 52. Wark PA, Johnston SL, Bucchieri F, et al. Asthmatic bronchial epithelial cells have a deficient innate immune response to infection with rhinovirus. *J Exp Med*. 2005;201(6):937-947.
 53. Mahmutovic-Persson I, Akbarshahi H, Bartlett NW, et al. Inhaled dsRNA and rhinovirus evoke neutrophilic exacerbation and lung expression of thymic stromal lymphopoietin in allergic mice with established experimental asthma. *Allergy*. 2014;69(3):348-358.
 54. Lee HC, Headley MB, Loo YM, et al. Thymic stromal lymphopoietin is induced by respiratory syncytial virus-infected airway epithelial cells and promotes a type 2 response to infection. *J Allergy Clin Immunol*. 2012;130(5):1187-1196.e5.
 55. Comstock AT, Ganesan S, Chatteraj A, et al. Rhinovirus-induced barrier dysfunction in polarized airway epithelial cells is mediated by NADPH oxidase 1. *J Virol*. 2011;85(13):6795-6808.
 56. Sajjan U, Wang Q, Zhao Y, Gruenert DC, Hershenson MB. Rhinovirus disrupts the barrier function of polarized airway epithelial cells. *Am J Respir Crit Care Med*. 2008;178(12):1271-1281.
 57. Looi K, Buckley AG, Rigby PJ, et al. Effects of human rhinovirus on epithelial barrier integrity and function in children with asthma. *Clin Exp Allergy*. 2018;48(5):513-524.
 58. Potaczek DP, Miethe S, Schindler V, Alhamdan F, Garn H. Role of airway epithelial cells in the development of different asthma phenotypes. *Cell Signal*. 2020;69:109523.
 59. Aghapour M, Raei P, Moghaddam SJ, Hiemstra PS, Heijink IH. Airway epithelial barrier dysfunction in chronic obstructive pulmonary disease: role of cigarette smoke exposure. *Am J Respir Cell Mol Biol*. 2018;58(2):157-169.
 60. van den Berge M, Jonker MR, Miller-Larsson A, Postma DS, Heijink IH. Effects of fluticasone propionate and budesonide on the expression of immune defense genes in bronchial epithelial cells. *Pulm Pharmacol Ther*. 2018;50:47-56.
 61. Kuruvilla ME, Lee FE, Lee GB. Understanding asthma phenotypes, endotypes, and mechanisms of disease. *Clin Rev Allergy Immunol*. 2019;56(2):219-233.
 62. De Grove KC, Provoost S, Brusselle GG, Joos GF, Maes T. Insights in particulate matter-induced allergic airway inflammation: focus on the epithelium. *Clin Exp Allergy*. 2018;48(7):773-786.
 63. Kim N, Han DH, Suh MW, Lee JH, Oh SH, Park MK. Effect of lipopolysaccharide on diesel exhaust particle-induced junctional dysfunction in primary human nasal epithelial cells. *Environ Pollut*. 2019;248:736-742.
 64. Michaudel C, Mackowiak C, Maillet I, et al. Ozone exposure induces respiratory barrier biphasic injury and inflammation controlled by IL-33. *J Allergy Clin Immunol*. 2018;142(3):942-958.
 65. Wang M, Tan G, Eljaszewicz A, et al. Laundry detergents and detergent residue after rinsing directly disrupt tight junction barrier

- integrity in human bronchial epithelial cells. *J Allergy Clin Immunol.* 2019;143(5):1892-1903.
66. Hall R, Hall IP, Sayers I. Genetic risk factors for the development of pulmonary disease identified by genome-wide association. *Respirology.* 2019;24(3):204-214.
 67. Li X, Hastie AT, Hawkins GA, et al. eQTL of bronchial epithelial cells and bronchial alveolar lavage deciphers GWAS-identified asthma genes. *Allergy.* 2015;70(10):1309-1318.
 68. Luo W, Obeidat M, Di Narzo AF, et al. Airway epithelial expression quantitative trait loci reveal genes underlying asthma and other airway diseases. *Am J Respir Cell Mol Biol.* 2016;54(2):177-187.
 69. Ferreira MA, McRae AF, Medland SE, et al. Association between ORM DL3, IL1RL1 and a deletion on chromosome 17q21 with asthma risk in Australia. *Eur J Hum Genet.* 2011;19(4):458-464.
 70. Marenholz I, Esparza-Gordillo J, Ruschendorf F, et al. Meta-analysis identifies seven susceptibility loci involved in the atopic march. *Nat Commun.* 2015;6:8804.
 71. Geng G, Du Y, Dai J, Tian D, Xia Y, Fu Z. KIF3A knockdown sensitizes bronchial epithelia to apoptosis and aggravates airway inflammation in asthma. *Biomed Pharmacother.* 2018;97:1349-1355.
 72. Annesi F, Gambardella A, Michelucci R, et al. Mutational analysis of EFHC1 gene in Italian families with juvenile myoclonic epilepsy. *Epilepsia.* 2007;48(9):1686-1690.
 73. Ikeda T, Ikeda K, Enomoto M, Park MK, Hirono M, Kamiya R. The mouse ortholog of EFHC1 implicated in juvenile myoclonic epilepsy is an axonemal protein widely conserved among organisms with motile cilia and flagella. *FEBS Lett.* 2005;579(3):819-822.
 74. Shrine N, Portelli MA, John C, et al. Moderate-to-severe asthma in individuals of European ancestry: a genome-wide association study. *Lancet Respir Med.* 2019;7(1):20-34.
 75. Singhania A, Rupani H, Jayasekera N, et al. Altered epithelial gene expression in peripheral airways of severe asthma. *PLoS One.* 2017;12(1):e0168680.
 76. Bonnelykke K, Sleiman P, Nielsen K, et al. A genome-wide association study identifies CDHR3 as a susceptibility locus for early childhood asthma with severe exacerbations. *Nat Genet.* 2014;46(1):51-55.
 77. Everman JL, Sajuthi S, Saef B, et al. Functional genomics of CDHR3 confirms its role in HRV-C infection and childhood asthma exacerbations. *J Allergy Clin Immunol.* 2019;144(4):962-971.
 78. Koning H, Sayers I, Stewart CE, et al. Characterization of protocadherin-1 expression in primary bronchial epithelial cells: association with epithelial cell differentiation. *FASEB J.* 2012;26(1):439-448.
 79. Faura Tellez G, Willemse BW, Brouwer U, et al. Protocadherin-1 localization and cell-adhesion function in airway epithelial cells in asthma. *PLoS One.* 2016;11(10):e0163967.
 80. Faura Tellez G, Vandepoele K, Brouwer U, et al. Protocadherin-1 binds to SMAD3 and suppresses TGF-beta1-induced gene transcription. *Am J Physiol Lung Cell Mol Physiol.* 2015;309(7):L725-L735.
 81. Liu Y, Bochkov YA, Eickhoff JC, et al. Orosomucoid like 3 (ORMDL3) supports rhinovirus replication in human epithelial cells. *Am J Respir Cell Mol Biol.* 2020;62(6):783-792.
 82. Das S, Miller M, Beppu AK, et al. GSDMB induces an asthma phenotype characterized by increased airway responsiveness and remodeling without lung inflammation. *Proc Natl Acad Sci U S A.* 2016;113(46):13132-13137.
 83. Panganiban RA, Sun M, Dahlin A, et al. A functional splice variant associated with decreased asthma risk abolishes the ability of gasdermin B to induce epithelial cell pyroptosis. *J Allergy Clin Immunol.* 2018;142(5):1469-1478.e2.
 84. Koppelman GH, Sayers I. Evidence of a genetic contribution to lung function decline in asthma. *J Allergy Clin Immunol.* 2011;128(3):479-484.
 85. Schoettler N, Rodriguez E, Weidinger S, Ober C. Advances in asthma and allergic disease genetics: is bigger always better? *J Allergy Clin Immunol.* 2019;144(6):1495-1506.
 86. Woodruff PG, Boushey HA, Dolganov GM, et al. Genome-wide profiling identifies epithelial cell genes associated with asthma and with treatment response to corticosteroids. *Proc Natl Acad Sci U S A.* 2007;104(40):15858-15863.
 87. Kim S, Forno E, Yan Q, et al. SNPs identified by GWAS affect asthma risk through DNA methylation and expression of cis-genes in airway epithelium. *Eur Respir J.* 2019;55(4):1902079.
 88. Brook PO, Perry MM, Adcock IM, Durham AL. Epigenome-modifying tools in asthma. *Epigenomics.* 2015;7(6):1017-1032.
 89. Yang IV, Lozupone CA, Schwartz DA. The environment, epigenome, and asthma. *J Allergy Clin Immunol.* 2017;140(1):14-23.
 90. Hudon Thibeault AA, Laprise C. Cell-specific DNA methylation signatures in asthma. *Genes (Basel).* 2019;10(11):932.
 91. Qi C, Jiang Y, Yang IV, et al. Nasal DNA methylation profiling of asthma and rhinitis. *J Allergy Clin Immunol.* 2020. <https://doi.org/10.1016/j.jaci.2019.12.911>. [Epub ahead of print].
 92. Teschendorff AE, Relton CL. Statistical and integrative system-level analysis of DNA methylation data. *Nat Rev Genet.* 2018;19(3):129-147.
 93. Vieira Braga FA, Kar G, Berg M, et al. A cellular census of human lungs identifies novel cell states in health and in asthma. *Nat Med.* 2019;25(7):1153-1163.
 94. Brugha R, Lowe R, Henderson AJ, et al. DNA methylation profiles between airway epithelium and proxy tissues in children. *Acta Paediatr.* 2017;106(12):2011-2016.
 95. Forno E, Wang T, Qi C, et al. DNA methylation in nasal epithelium, atopy, and atopic asthma in children: a genome-wide study. *Lancet Respir Med.* 2019;7(4):336-346.
 96. Cardenas A, Sordillo JE, Rifas-Shiman SL, et al. The nasal methylome as a biomarker of asthma and airway inflammation in children. *Nat Commun.* 2019;10(1):3095-4019.
 97. Yang IV, Pedersen BS, Liu AH, et al. The nasal methylome and childhood atopic asthma. *J Allergy Clin Immunol.* 2017;139(5):1478-1488.
 98. Qi C, Xu CJ, Koppelman GH. The role of epigenetics in the development of childhood asthma. *Expert Rev Clin Immunol.* 2019;15(12):1287-1302.
 99. Vermeulen CJ, Xu CJ, Vonk JM, et al. Differential DNA methylation in bronchial biopsies between persistent asthma and asthma in remission. *Eur Respir J.* 2020;55(2):1901280.
 100. Pech M, Weckmann M, König IR, et al. Rhinovirus infections change DNA methylation and mRNA expression in children with asthma. *PLoS One.* 2018;13(11):e0205275.
 101. Lund RJ, Osmala M, Malonzo M, et al. Atopic asthma after rhinovirus-induced wheezing is associated with DNA methylation change in the SMAD3 gene promoter. *Allergy.* 2018;73(8):1735-1740.
 102. McErlean P, Favoreto S, Costa FF, et al. Human rhinovirus infection causes different DNA methylation changes in nasal epithelial cells from healthy and asthmatic subjects. *BMC Med Genomics.* 2014;7:37-8794.
 103. Clifford RL, Jones MJ, MacIsaac JL, et al. Inhalation of diesel exhaust and allergen alters human bronchial epithelium DNA methylation. *J Allergy Clin Immunol.* 2017;139(1):112-121.
 104. Moheimani F, Hsu AC, Reid AT, et al. The genetic and epigenetic landscapes of the epithelium in asthma. *Respir Res.* 2016;17(1):119.
 105. Solberg OD, Ostrin EJ, Love MI, et al. Airway epithelial miRNA expression is altered in asthma. *Am J Respir Crit Care Med.* 2012;186(10):965-974.
 106. Huang H, Lu H, Liang L, et al. MicroRNA-744 inhibits proliferation of bronchial epithelial cells by regulating Smad3 pathway via targeting transforming growth factor-beta1 (TGF-beta1) in severe asthma. *Med Sci Monit.* 2019;25:2159-2168.
 107. Zhang H, Sun Y, Rong W, et al. miR-221 participates in the airway epithelial cells injury in asthma via targeting SIRT1. *Exp Lung Res.* 2018;44(6):272-279.

108. Haj-Salem I, Fakhfakh R, Berube JC, et al. MicroRNA-19a enhances proliferation of bronchial epithelial cells by targeting TGFbetaR2 gene in severe asthma. *Allergy*. 2015;70(2):212-219.
109. Martinez-Nunez RT, Bondanese VP, Louafi F, et al. A microRNA network dysregulated in asthma controls IL-6 production in bronchial epithelial cells. *PLoS One*. 2014;9(10):e111659.
110. Song R, Walentek P, Sponer N, et al. miR-34/449 miRNAs are required for motile ciliogenesis by repressing cp110. *Nature*. 2014;510(7503):115-120.
111. Song L, Sen S, Sun Y, Zhou J, Mo L, He Y. Ketamine inhalation ameliorates ovalbumin-induced murine asthma by suppressing the epithelial-mesenchymal transition. *Med Sci Monit*. 2016;22:2471-2483.
112. Maes T, Cobos FA, Schleich F, et al. Asthma inflammatory phenotypes show differential microRNA expression in sputum. *J Allergy Clin Immunol*. 2016;137(5):1433-1446.
113. Cui W, Meng W, Zhao L, Cao H, Chi W, Wang B. TGF-beta-induced long non-coding RNA MIR155HG promotes the progression and EMT of laryngeal squamous cell carcinoma by regulating the miR-155-5p/SOX10 axis. *Int J Oncol*. 2019;54(6):2005-2018.
114. Fang C, Lu W, Li C, et al. MiR-3162-3p is a novel MicroRNA that exacerbates asthma by regulating beta-catenin. *PLoS One*. 2016;11(3):e0149257.
115. Liu Z, Chen X, Wu Q, Song J, Wang L, Li G. miR-125b inhibits goblet cell differentiation in allergic airway inflammation by targeting SPDEF. *Eur J Pharmacol*. 2016;782:14-20.
116. Su Y, Wang J, Zou J, Han W, Li S. miR-330 regulates interleukin-13-induced MUC5AC secretion by targeting Munc18b in human bronchial epithelial cells. *Int J Clin Exp Pathol*. 2018;11(7):3463-3470.
117. Gupta R, Radicioni G, Abdelwahab S, et al. Intercellular communication between airway epithelial cells is mediated by exosome-like vesicles. *Am J Respir Cell Mol Biol*. 2019;60(2):209-220.
118. Bartel S, La Grutta S, Cilluffo G, et al. Human airway epithelial extracellular vesicle miRNA signature is altered upon asthma development. *Allergy*. 2020;75(2):346-356.
119. Yang ZC, Qu ZH, Yi MJ, et al. MiR-448-5p inhibits TGF-beta1-induced epithelial-mesenchymal transition and pulmonary fibrosis by targeting Six1 in asthma. *J Cell Physiol*. 2019;234(6):8804-8814.
120. Vento-Tormo R, Efremova M, Botting RA, et al. Single-cell reconstruction of the early maternal-fetal interface in humans. *Nature*. 2018;563(7731):347-353.
121. Plasschaert LW, Zilionis R, Choo-Wing R, et al. A single-cell atlas of the airway epithelium reveals the CFTR-rich pulmonary ionocyte. *Nature*. 2018;560(7718):377-381.
122. Schiller HB, Montoro DT, Simon LM, et al. The human lung cell atlas: a high-resolution reference map of the human lung in health and disease. *Am J Respir Cell Mol Biol*. 2019;61(1):31-41.
123. Regev A, Teichmann SA, Lander ES, et al. The human cell atlas. *Elife*. 2017;6:e27041.
124. Schwarze J, Fitch PM, Heimweg J, et al. Viral mimic poly-(I:C) attenuates airway epithelial T-cell suppressive capacity: implications for asthma. *Eur Respir J*. 2016;48(6):1785-1788.
125. Hua K, Li Y, Zhou H, et al. Haemophilus parasuis infection disrupts adherens junctions and initializes EMT dependent on canonical wnt/beta-catenin signaling pathway. *Front Cell Infect Microbiol*. 2018;8:324.
126. Moheimani F, Roth HM, Cross J, et al. Disruption of beta-catenin/CBP signaling inhibits human airway epithelial-mesenchymal transition and repair. *Int J Biochem Cell Biol*. 2015;68:59-69.
127. Lafkas D, Shelton A, Chiu C, et al. Therapeutic antibodies reveal notch control of transdifferentiation in the adult lung. *Nature*. 2015;528(7580):127-131.
128. Doerner AM, Zuraw BL. TGF-beta1 induced epithelial to mesenchymal transition (EMT) in human bronchial epithelial cells is enhanced by IL-1beta but not abrogated by corticosteroids. *Respir Res*. 2009;10:100.
129. Heijink I, van Oosterhout A, Kliphuis N, et al. Oxidant-induced corticosteroid unresponsiveness in human bronchial epithelial cells. *Thorax*. 2014;69(1):5-13.
130. Marwick JA, Caramori G, Casolari P, et al. A role for phosphoinositide 3-kinase delta in the impairment of glucocorticoid responsiveness in patients with chronic obstructive pulmonary disease. *J Allergy Clin Immunol*. 2010;125(5):1146-1153.
131. Ito K, Yamamura S, Essilfie-Quaye S, et al. Histone deacetylase 2-mediated deacetylation of the glucocorticoid receptor enables NF-kappaB suppression. *J Exp Med*. 2006;203(1):7-13.
132. To Y, Ito K, Kizawa Y, et al. Targeting phosphoinositide-3-kinase-delta with theophylline reverses corticosteroid insensitivity in chronic obstructive pulmonary disease. *Am J Respir Crit Care Med*. 2010;182(7):897-904.
133. Ferreira MA, Vonk JM, Baurecht H, et al. Shared genetic origin of asthma, hay fever and eczema elucidates allergic disease biology. *Nat Genet*. 2017;49(12):1752-1757.
134. Schleimer RP. Immunopathogenesis of chronic rhinosinusitis and nasal polyposis. *Annu Rev Pathol*. 2017;12:331-357.
135. Pigors M, Common JEA, Wong XFCC, et al. Exome sequencing and rare variant analysis reveals multiple filaggrin mutations in bangladeshi families with atopic eczema and additional risk genes. *J Invest Dermatol*. 2018;138(12):2674-2677.
136. Lopes C, Rocha L, Sokhatska O, et al. Filaggrin polymorphism Pro478Ser is associated with the severity of atopic dermatitis and colonization by staphylococcal aureus. *J Investig Allergol Clin Immunol*. 2016;26(1):70-72.
137. Sherrill JD, Kc K, Wu D, et al. Desmoglein-1 regulates esophageal epithelial barrier function and immune responses in eosinophilic esophagitis. *Mucosal Immunol*. 2014;7(3):718-729.
138. Moffatt MF, Gut IG, Demenais F, et al. A large-scale, consortium-based genomewide association study of asthma. *N Engl J Med*. 2010;363(13):1211-1221.
139. Gordon ED, Palandra J, Wesolowska-Andersen A, et al. IL1RL1 asthma risk variants regulate airway type 2 inflammation. *JCI Insight*. 2016;1(14):e87871.
140. Ferreira MA, Matheson MC, Tang CS, et al. Genome-wide association analysis identifies 11 risk variants associated with the asthma with hay fever phenotype. *J Allergy Clin Immunol*. 2014;133(6):1564-1571.
141. Soumelis V, Reche PA, Kanzler H, et al. Human epithelial cells trigger dendritic cell-mediated allergic inflammation by producing TSLP. *Nat Immunol*. 2002;3(7):673-680.
142. Gras D, Martinez-Anton A, Bourdin A, et al. Human bronchial epithelium orchestrates dendritic cell activation in severe asthma. *Eur Respir J*. 2017;49(3):1602399.
143. Hui CC, Yu A, Heroux D, et al. Thymic stromal lymphopoietin (TSLP) secretion from human nasal epithelium is a function of TSLP genotype. *Mucosal Immunol*. 2015;8(5):993-999.
144. Kovacic MB, Myers JM, Wang N, et al. Identification of KIF3A as a novel candidate gene for childhood asthma using RNA expression and population allelic frequencies differences. *PLoS One*. 2011;6(8):e23714.
145. Koppelman GH, Meyers DA, Howard TD, et al. Identification of PCDH1 as a novel susceptibility gene for bronchial hyperresponsiveness. *Am J Respir Crit Care Med*. 2009;180(10):929-935.
146. Basnet S, Bochkov YA, Brockman-Schneider RA, et al. CDHR3 asthma-risk genotype affects susceptibility of airway epithelium to rhinovirus C infections. *Am J Respir Cell Mol Biol*. 2019;61(4):450-458.

147. Altman MC, Lai Y, Nolin JD, et al. Airway epithelium-shifted mast cell infiltration regulates asthmatic inflammation via IL-33 signaling. *J Clin Invest*. 2019;129(11):4979-4991.
148. Jackson DJ, Makrinioti H, Rana BM, et al. IL-33-dependent type 2 inflammation during rhinovirus-induced asthma exacerbations in vivo. *Am J Respir Crit Care Med*. 2014;190(12):1373-1382.
149. Stefanowicz D, Hackett TL, Garmaroudi FS, et al. DNA methylation profiles of airway epithelial cells and PBMCs from healthy, atopic and asthmatic children. *PLoS One*. 2012;7(9):e44213.
150. Tan QY, Cheng ZS. TGFbeta1-smad signaling pathway participates in interleukin-33 induced epithelial-to-mesenchymal transition of A549 cells. *Cell Physiol Biochem*. 2018;50(2):757-767.
151. Moffatt MF, Kabisch M, Liang L, et al. Genetic variants regulating ORMDL3 expression contribute to the risk of childhood asthma. *Nature*. 2007;448(7152):470-473.
152. Miller M, Tam AB, Mueller JL, et al. Cutting edge: targeting epithelial ORMDL3 increases, rather than reduces, airway responsiveness and is associated with increased sphingosine-1-phosphate. *J Immunol*. 2017;198(8):3017-3022.
153. Miller M, Rosenthal P, Beppu A, et al. ORMDL3 transgenic mice have increased airway remodeling and airway responsiveness characteristic of asthma. *J Immunol*. 2014;192(8):3475-3487.
154. Ono JG, Kim BI, Zhao Y, et al. Decreased sphingolipid synthesis in children with 17q21 asthma-risk genotypes. *J Clin Invest*. 2020;130(2):921-926.
155. Wang H, Liu Y, Shi J, Cheng Z. ORMDL3 knockdown in the lungs alleviates airway inflammation and airway remodeling in asthmatic mice via JNK1/2-MMP-9 pathway. *Biochem Biophys Res Commun*. 2019;516(3):739-746.
156. Yang R, Tan M, Xu J, Zhao X. Investigating the regulatory role of ORMDL3 in airway barrier dysfunction using in vivo and in vitro models. *Int J Mol Med*. 2019;44(2):535-548.
157. Barton SJ, Koppelman GH, Vonk JM, et al. PLAUR polymorphisms are associated with asthma, PLAUR levels, and lung function decline. *J Allergy Clin Immunol*. 2009;123(6):1391-400.e17.
158. Portelli MA, Hodge E, Sayers I. Genetic risk factors for the development of allergic disease identified by genome-wide association. *Clin Exp Allergy*. 2015;45(1):21-31.
159. Ierodiakonou D, Postma DS, Koppelman GH, et al. E-cadherin gene polymorphisms in asthma patients using inhaled corticosteroids. *Eur Respir J*. 2011;38(5):1044-1052.
160. Stewart CE, Nijmeh HS, Brightling CE, Sayers I. uPAR regulates bronchial epithelial repair in vitro and is elevated in asthmatic epithelium. *Thorax*. 2012;67(6):477-487.
161. Post S, Rozeveld D, Jonker MR, Bischoff R, van Oosterhout AJ, Heijink IH. ADAM10 mediates the house dust mite-induced release of chemokine ligand CCL20 by airway epithelium. *Allergy*. 2015;70(12):1545-1552.

How to cite this article: Heijink IH, Kuchibhotla VNS, Roffel MP, et al. Epithelial cell dysfunction, a major driver of asthma development. *Allergy*. 2020;75:1902-1917. <https://doi.org/10.1111/all.14421>