



**Genetic variation in HSD17B13 reduces the risk of developing cirrhosis and hepatocellular carcinoma in alcohol misusers**

Journal:	<i>Hepatology</i>
Manuscript ID	HEP-19-1601.R1
Wiley - Manuscript type:	Original
Date Submitted by the Author:	17-Sep-2019
Complete List of Authors:	<p>Stickel, Felix; University Hospital of Zurich, Switzerland , Department of Gastroenterology and Hepatology,  Lutz, Philipp; University Hospital Bonn, Department for Internal Medicine I; German Center for Infection Research (DZIF), Partner Site Bonn/Cologne  Buch, Stephan; Universitätsklinikum Carl Gustav Carus Medizinische Klinik und Poliklinik I  Nischalke, Hans Dieter; University of Bonn  Silva, Ines; Salem Medical Center and Center for Alcohol Research, University of Heidelberg  Rausch, Vanessa; Salem Medical Center and Center for Alcohol Research, University of Heidelberg  Fischer, Janett; Universitätsklinikum Leipzig, Gastroenterologie/ Sektion Hepatologie  Weiss, Karl-Heinz; University Hospital of Heidelberg, Department of Internal Medicine IV  Gotthardt, Daniel; University Hospital Heidelberg, Mediteo GmbH;  Rosendahl, Jonas; University of Leipzig, Department of Medicine  Marot, Astrid; Centre Hospitalier Universitaire Vaudois Departement de Psychiatrie  Elamly, Mona; University of Lausanne, Division of Gastroenterology and Hepatology, Centre Hospitalier Universitaire Vaudois  Krawczyk, Marcin; Saarland University Hospital, Department of Medicine II  Casper, Markus; Universitätsklinikum des Saarlandes und Medizinische Fakultät der Universität des Saarlandes  Lammert, Frank; Saarland University Hospital, Department of Medicine II;  Buckley, Thomas; University College London, Molecular Psychiatry Laboratory, Division of Psychiatry  McQuillin, Andrew; University College London Medical School, Molecular Psychiatry Laboratory, Division of Psychiatry  Spengler, Ulrich; University Hospital Bonn, Department of Internal Medicine I; German Center for Infection Research (DZIF), Partner Site Bonn/Cologne  Eyer, Florian; Klinikum rechts der Isar, Technical University of Munich, Department of Toxicology  Vogel, Arndt; Medical School Hannover, Dep. Gastroenterology, Hepatology and Endocrinology  Marhenke, Silke; Medical School Hannover, Dep. Gastroenterology,</p>

	<p>Hepatology and Endocrinology;  von Felden, Johann; University Hospital Hamburg Eppendorf Center of Experimental Medicine  Wege, Henning; University Hospital Hamburg-Eppendorf, Internal Medicine I  Sharma, Rohini; Imperial College London, Experimental Medicine  Atkinson, Stephen; Imperial College London, Hepatology  Franke, Andre; Kiel University, Institute of Clinical Molecular Biology  Nehring, Sophie; Universitätsklinikum Carl Gustav Carus Medizinische Klinik und Poliklinik I  Moser, Vincent; Universitätsklinikum Carl Gustav Carus Medizinische Klinik und Poliklinik I  Schafmayer, Clemens; University Hospital Schleswig-Holstein, Department of Surgery  Spahr, Laurent; University Hospital Geneva, Gastroenterology and Hepatology  Lackner, Carolin; Medical University Graz, Institute of Pathology  Stauber, Rudolf; Medical University of Graz, Dept. of Internal Medicine  Canbay, Ali; Otto-von-Guericke-Universität Magdeburg Medizinische Fakultät, Department of Gastroenterology, Hepatology and Infectious Diseases  Link, Alexander; Otto von Guericke Universität Magdeburg, Department of Gastroenterology, Hepatology and Infectious Diseases  Valenti, Luca; Centro Studi Malattie Metaboliche del Fegato, University of Milano, Maggiore Policlinico Hospital, IRCCS Ca' Granda Foundation, Milano, Department of Internal Medicine  Grove, Jane; Nottingham University Hospitals NHS Trust and University of Nottingham, National Institute for Health Research Nottingham Digestive Diseases Biomedical Research Unit  Aithal, Guruprasad; NIHR Biomedical Research Unit, Nottingham Digestive Diseases Centre  Marquardt, Jens; Johannes Gutenberg University, I. Dept. of Internal Medicine; NIH/NCI/CCR, Laboratory of Experimental Carcinogenesis  Fateen, Waleed; Nottingham University Hospitals NHS Trust and University of Nottingham, Nottingham Digestive Diseases Biomedical Research Centre;  Zopf, Steffen; University of Erlangen-Nuremberg  Dufour, Jean Francois; Inselspital Bern, Department of Hepatology  Trebicka, Jonel; Universits of Frankfurt  Datz, Christian; Hospital Oberndorf,, Department of Internal Medicine  Deltenre, Pierre; Centre Hospitalier Universitaire Vaudois, University of Lausanne, Division of Gastroenterology and Hepatology  Mueller, Sebastian; University of Heidelberg, Department of Internal Medicine IV  Berg, Thomas; Universitätsklinik Leipzig, Department of Hepatology; Clinic of Gastroenterology and Rheumatology;  Hampe, Jochen; UKSH, Campus Kiel, Department of Internal Medicine; Universitätsklinikum Carl Gustav Carus Medizinische Klinik und Poliklinik I  Morgan, Marsha; London Medical School, University College London, The Centre for Hepatology, Royal Free Campus, University College</p>
Keywords:	adiponutrin, candidate genes, fibrosis, genetic risk association, host genetics

- 1
- 2
- 3
- 4
- 5
- 6
- 7
- 8
- 9
- 10
- 11
- 12
- 13
- 14
- 15
- 16
- 17
- 18
- 19
- 20
- 21
- 22
- 23
- 24
- 25
- 26
- 27
- 28
- 29
- 30
- 31
- 32
- 33
- 34
- 35
- 36
- 37
- 38
- 39
- 40
- 41
- 42
- 43
- 44
- 45
- 46
- 47
- 48
- 49
- 50
- 51
- 52
- 53
- 54
- 55
- 56
- 57
- 58
- 59
- 60

Stickel *et al.*Alcoholic cirrhosis, HCC, risk reduction and *HSD17B13*

## Genetic variation in *HSD17B13* reduces the risk of developing cirrhosis and hepatocellular carcinoma in alcohol misusers

**Short title:** Alcoholic cirrhosis, HCC, risk reduction and *HSD17B13*

Felix Stickel<sup>1\*</sup>, Philipp Lutz<sup>2\*</sup>, Stephan Buch<sup>3\*</sup>, Hans Dieter Nischalke<sup>2\*</sup>, Ines Silva<sup>4</sup>, Vanessa Rausch<sup>4</sup>, Janett Fischer<sup>5</sup>, Karl Heinz Weiss<sup>6</sup>, Daniel Gotthardt<sup>6</sup>, Jonas Rosendahl<sup>7</sup>, Astrid Marot<sup>8</sup>, Mona Elamly<sup>8</sup>, Marcin Krawczyk<sup>9,29</sup>, Markus Casper<sup>9</sup>, Frank Lammert<sup>9</sup>, Thomas WM Buckley<sup>10</sup>, Andrew McQuillin<sup>10</sup>, Ulrich Spengler<sup>2</sup>, Florian Eyer<sup>11</sup>, Arndt Vogel<sup>12</sup>, Silke Marhenke<sup>12</sup>, Johann von Felden<sup>13</sup>, Henning Wege<sup>13</sup>, Rohini Sharma<sup>14</sup>, Stephen Atkinson<sup>14</sup>, Andre Franke<sup>15</sup>, Sophie Nehring<sup>3</sup>, Vincent Moser<sup>3</sup>, Clemens Schafmayer<sup>16</sup>, Laurent Spahr<sup>17</sup>, Carolin Lackner<sup>18</sup>, Rudolf E. Stauber<sup>19</sup>, Ali Canbay<sup>20</sup>, Alexander Link<sup>20</sup>, Luca Valenti<sup>21</sup>, Jane I. Grove<sup>22</sup>, Guruprasad P. Aithal<sup>22</sup>, Jens U. Marquardt<sup>23</sup>, Waleed Fateen<sup>22</sup>, Steffen Zopf<sup>24</sup>, Jean-Francois Dufour<sup>25</sup>, Jonel Trebicka<sup>26</sup>, Christian Datz<sup>27</sup>, Pierre Deltenre<sup>8†</sup>, Sebastian Mueller<sup>4†</sup>, Thomas Berg<sup>5†</sup>, Jochen Hampe<sup>3†</sup>, Marsha Y Morgan<sup>28†</sup>

\*FS, PL, SB and HDN have contributed equally to the presented work and share premier authorship

†PD, SM, TB, JH and MYM have contributed equally to the presented work and share senior authorship

<sup>1</sup>Department of Gastroenterology and Hepatology, University Hospital of Zurich, Switzerland

<sup>2</sup>Department of Internal Medicine I, University of Bonn, Bonn, Germany

<sup>3</sup>Medical Department 1, University Hospital Dresden, TU Dresden, Germany

<sup>4</sup>Department of Internal Medicine and Center for Alcohol Research, Salem Medical Center University Hospital Heidelberg, Heidelberg, Germany

<sup>5</sup>Hepatology Section, Division of Gastroenterology and Rheumatology, University Hospital Leipzig, Leipzig, Germany

<sup>6</sup>Department of Internal Medicine IV, Medical University of Heidelberg, Germany

<sup>7</sup>Department of Gastroenterology, University Hospital Halle/Saale, Germany

<sup>8</sup>Division of Gastroenterology and Hepatology, Centre Hospitalier Universitaire Vaudois, University of Lausanne, Switzerland

<sup>9</sup>Department of Medicine II, Saarland University Medical Center, Homburg, Germany

<sup>10</sup>Molecular Psychiatry Laboratory, Division of Psychiatry, University College London, UK

<sup>11</sup>Department of Clinical Toxicology, Klinikum Rechts der Isar, Technical University of Munich, Germany

<sup>12</sup>Department of Gastroenterology, Hepatology and Endocrinology, Hannover Medical School, Germany

Stickel *et al.*

Alcoholic cirrhosis, HCC, risk reduction and *HSD17B13*

<sup>13</sup>First Department of Medicine, University Medical Center Hamburg-Eppendorf, Hamburg

<sup>14</sup>Department of Medicine, Division of Surgery and Cancer, Imperial College London, London, UK

<sup>15</sup>Institute of Clinical Molecular Biology, Kiel University, Kiel, Germany

<sup>16</sup>Department of Visceral and Thoracic Surgery, Kiel University, Kiel, Germany

<sup>17</sup>Departments of Gastroenterology and Hepatology, University Hospitals of Geneva and Faculty of Medicine, Geneva, Switzerland

<sup>18</sup>Institute of Pathology, Medical University of Graz, Austria

<sup>19</sup>Division of Gastroenterology and Hepatology, Department of Internal Medicine, Medical University of Graz, Austria

<sup>20</sup>Department of Gastroenterology, Hepatology and Infectious Diseases, Otto-von-Guericke University, Magdeburg, Germany

<sup>21</sup>Department of Pathophysiology and Transplantation, Università degli Studi di Milano, and Translational Medicine – Department of Transfusion Medicine and Hematology, Fondazione IRCCS Ca'Granda Ospedale Maggiore Policlinico, Milan, Italy

<sup>22</sup>NIHR Nottingham Biomedical Research Centre, Nottingham University Hospitals NHS Trust and the University of Nottingham, Nottingham, UK; Nottingham Digestive Diseases Centre, University of Nottingham, Nottingham, UK

<sup>23</sup>Department of Medicine I, Johannes Gutenberg-Universität Mainz, Mainz, Germany

<sup>24</sup>Medical Department 1, University of Erlangen-Nuremberg, Germany

<sup>25</sup>University Clinic for Visceral Surgery and Medicine, Inselspital, University of Berne, Berne, Switzerland

<sup>26</sup>Department of Internal Medicine I, Goethe University Frankfurt, Frankfurt, Germany

<sup>27</sup>Department of Internal Medicine, Hospital Oberndorf, Teaching Hospital of the Paracelsus Private Medical University of Salzburg, Oberndorf, Austria

<sup>28</sup>UCL Institute for Liver & Digestive Health, Division of Medicine, Royal Free Campus, University College London, United Kingdom

<sup>29</sup>Laboratory of Metabolic Liver Diseases, Department of General, Transplant and Liver Surgery, Centre for Preclinical Research, Medical University of Warsaw, Warsaw, Poland

## Correspondence

Felix Stickel, MD

Department of Gastroenterology and Hepatology, University Hospital Zürich,  
Rämistrasse 100, CH-8091 Zürich, Switzerland

Phone +41-31-338 7817

Fax +41-31-335 3519

Felix.stickel@uzh.ch

Stickel *et al.*

Alcoholic cirrhosis, HCC, risk reduction and *HSD17B13*

**Key words:** adiponutrin; candidate genes; fibrosis; genetic risk association; genetic susceptibility; host genetics; lipotoxicity.

**Word count:** 6,012

**Tables:** 3 (+ 8 Supplementary Tables)

**Figures:** 3 (+ 2 Supplementary Figures 1A-C, 2A-C)

### Conflicting Interests

None of the authors has any conflict of interest in relation to the contents of this manuscript.

### Funding

This work was supported by grants from the Swiss National Funds (SNF no. 310030\_169196) and the Swiss Foundation for Alcohol Research (SSA) to FS, and the Liver Systems Medicine (LiSyM) Network funded by the German Federal Ministry for Education and Research (BmBF) to JH. HDN and US were supported by a grant from the Deutsche Krebshilfe (70112169).

### Author contributions

Felix Stickel conceived the study, raised the pivotal funding, contributed biological material from cases and controls, analyzed the data, wrote the manuscript, acted as the corresponding author and approved the final draft submitted

Philipp Lutz contributed biological material from cases and controls, analyzed the data, critically revised the manuscript and approved the final draft submitted

Stephan Buch analyzed the primary data, performed the biostatistics, critically revised the manuscript and approved the final draft submitted

Hans Dieter Nischalke contributed biological material from cases and controls, analyzed the data, critically revised the manuscript and approved the final draft submitted

Ines Silva contributed biological material from phenotyped cases and controls, critically revised the manuscript and approved the final draft submitted

Vanessa Rausch contributed biological material from phenotyped cases and controls, critically revised the manuscript and approved the final draft submitted

Janett Fischer contributed biological material from phenotyped cases and controls, critically revised the manuscript and approved the final draft submitted

Karl Heinz Weiss contributed biological material from phenotyped cases and controls, critically revised the manuscript and approved the final draft submitted

1  
2  
3  
4  
5  
6  
7  
8  
9  
10  
11  
12  
13  
14  
15  
16  
17  
18  
19  
20  
21  
22  
23  
24  
25  
26  
27  
28  
29  
30  
31  
32  
33  
34  
35  
36  
37  
38  
39  
40  
41  
42  
43  
44  
45  
46  
47  
48  
49  
50  
51  
52  
53  
54  
55  
56  
57  
58  
59  
60

Stickel *et al.* Alcoholic cirrhosis, HCC, risk reduction and *HSD17B13*

Daniel Gotthardt contributed biological material from phenotyped cases and controls, critically revised the manuscript and approved the final draft submitted

Jonas Rosendahl contributed biological material from phenotyped cases and controls, critically revised the manuscript and approved the final draft submitted

Astrid Marot contributed biological material from phenotyped cases and controls, critically revised the manuscript and approved the final draft submitted

Mona Elamly contributed biological material from phenotyped cases and controls, critically revised the manuscript and approved the final draft submitted

Marcin Krawczyk contributed biological material from phenotyped cases and controls, critically revised the manuscript and approved the final draft submitted

Markus Casper contributed biological material from phenotyped cases and controls, critically revised the manuscript and approved the final draft submitted

Frank Lammert contributed biological material from phenotyped cases and controls, critically revised the manuscript and approved the final draft submitted

Thomas Buckley genotypes the healthy control samples collected in the United Kingdom, critically revised the manuscript and approved the final draft submitted

Andrew McQuillin contributed biological material from healthy controls, reviewed the biostatistics analysis, critically revised the manuscript and approved the final draft submitted

Ulrich Spengler contributed biological material from phenotyped cases and controls, critically revised the manuscript and approved the final draft submitted

Florian Eyer contributed biological material from phenotyped cases and controls, critically revised the manuscript and approved the final draft submitted

Arndt Vogel contributed biological material from phenotyped cases and controls, critically revised the manuscript and approved the final draft submitted

Silke Marhenke contributed biological material from phenotyped cases and controls, critically revised the manuscript and approved the final draft submitted

Johann von Felden contributed biological material from phenotyped cases and controls, critically revised the manuscript and approved the final draft submitted

Henning Wege contributed biological material from phenotyped cases and controls, critically revised the manuscript and approved the final draft submitted

Rohini Sharma contributed biological material from phenotyped cases and controls, critically revised the manuscript and approved the final draft submitted

Stephen Atkinson contributed biological material from phenotyped cases and controls, critically revised the manuscript and approved the final draft submitted

Andre Franke contributed biological material from phenotyped cases and controls, critically revised the manuscript and approved the final draft submitted

1	Stickel <i>et al.</i>	Alcoholic cirrhosis, HCC, risk reduction and <i>HSD17B13</i>
2		
3	Sophie Nehring	contributed biological material from phenotyped cases and controls, critically
4		revised the manuscript and approved the final draft submitted
5		
6	Vincent Moser	contributed biological material from phenotyped cases and controls, critically
7		revised the manuscript and approved the final draft submitted
8		
9	Clemens Schafmayer	contributed biological material from phenotyped cases and controls, critically
10		revised the manuscript and approved the final draft submitted
11		
12	Laurent Spahr	contributed biological material from phenotyped cases and controls, critically
13		revised the manuscript and approved the final draft submitted
14		
15	Carolin Lackner	contributed biological material from phenotyped cases and controls, critically
16		revised the manuscript and approved the final draft submitted
17		
18	Rudolf E. Stauber	contributed biological material from phenotyped cases and controls, critically
19		revised the manuscript and approved the final draft submitted
20		
21	Ali Canbay	contributed biological material from phenotyped cases and controls, critically
22		revised the manuscript and approved the final draft submitted
23		
24	Alexander Link	contributed biological material from phenotyped cases and controls, critically
25		revised the manuscript and approved the final draft submitted
26		
27	Luca Valenti	contributed biological material from phenotyped cases and controls, critically
28		revised the manuscript and approved the final draft submitted
29		
30	Jane I. Grove	contributed biological material from phenotyped cases and controls, critically
31		revised the manuscript and approved the final draft submitted
32		
33	Guruprasad P. Aithal	contributed biological material from phenotyped cases and controls, critically
34		revised the manuscript and approved the final draft submitted
35		
36	Jens U. Marquardt	contributed biological material from phenotyped cases and controls, critically
37		revised the manuscript and approved the final draft submitted
38		
39	Waleed Fateen	contributed biological material from phenotyped cases and controls, critically
40		revised the manuscript and approved the final draft submitted
41		
42	Steffen Zopf	contributed biological material from phenotyped cases and controls, critically
43		revised the manuscript and approved the final draft submitted
44		
45	Jean-Francois Dufour	contributed biological material from phenotyped cases and controls, critically
46		revised the manuscript and approved the final draft submitted
47		
48	Jonel Trebicka	contributed biological material from phenotyped cases and controls, critically
49		revised the manuscript and approved the final draft submitted
50		
51	Christian Datz	contributed biological material from phenotyped cases and controls, critically
52		revised the manuscript and approved the final draft submitted
53		
54	Pierre Deltenre	contributed biological material from phenotyped cases and controls, critically
55		revised the manuscript and approved the final draft submitted
56		
57		
58		
59		
60		



1  
2  
3  
4  
5  
6  
7  
8  
9  
10  
11  
12  
13  
14  
15  
16  
17  
18  
19  
20  
21  
22  
23  
24  
25  
26  
27  
28  
29  
30  
31  
32  
33  
34  
35  
36  
37  
38  
39  
40  
41  
42  
43  
44  
45  
46  
47  
48  
49  
50  
51  
52  
53  
54  
55  
56  
57  
58  
59  
60

Stickel *et al.* Alcoholic cirrhosis, HCC, risk reduction and *HSD17B13*

Sebastian Mueller contributed a large amount of biological material from phenotyped cases and controls, critically revised the manuscript and approved the final draft submitted

Thomas Berg contributed a large amount of biological material from phenotyped cases and controls, critically revised the manuscript and approved the final draft submitted

Jochen Hampe conceived the study, provided the genotyping infrastructure, critically revised the manuscript and approved the final draft submitted

Marsha Y. Morgan conceived the study, contributed biological material from phenotyped cases and controls, re-analyzed the data, co-wrote the manuscript, critically revised the manuscript and approved the final draft submitted

For Peer Review

Stickel *et al.*Alcoholic cirrhosis, HCC, risk reduction and *HSD17B13***ABSTRACT**

**Background & Aims:** Carriage of rs738409:G in *patatin-like phospholipase domain-containing 3* (*PNPLA3*) is associated with an increased risk for developing alcohol-related cirrhosis and hepatocellular carcinoma (HCC). Recently, rs72613567:TA in *hydroxysteroid 17-beta dehydrogenase 13* (*HSD17B13*) was shown to be associated with a reduced risk for developing alcohol-related liver disease and to attenuate the risk associated with *PNPLA3* rs738409:G. This study explores the risk-associations between these two genetic variants and the development of alcohol-related cirrhosis and HCC.

**Approach and Results:** Variants in *HSD17B13* and *PNPLA3* were genotyped in 6,171 participants, including: 1,031 with alcohol-related cirrhosis and HCC; 1,653 with alcohol-related cirrhosis without HCC; 2,588 alcohol misusers with no liver disease; and 899 healthy controls. Genetic associations with the risks for alcohol-related cirrhosis and HCC were determined using logistic regression analysis. Carriage of *HSD17B13* rs72613567:TA was associated with a lower risk for both cirrhosis (OR 0.79 [95% CI 0.72-0.88],  $p=8.13 \times 10^{-6}$ ) and HCC (OR 0.77 [95% CI 0.68-0.89],  $p=2.27 \times 10^{-4}$ ), while carriage of *PNPLA3* rs738409:G was associated with an increased risk for developing cirrhosis (OR 1.70 [95% CI 1.54-1.88],  $p=1.52 \times 10^{-26}$ ) and HCC (OR 1.77 [95% CI 1.58-1.98],  $p=2.31 \times 10^{-23}$ ). These associations remained significant after adjusting for age, sex, body mass index, type II diabetes mellitus and country. Carriage of *HSD17B13* rs72613567:TA attenuated the risk for developing cirrhosis associated with *PNPLA3* rs738409:G in both men and women but the protective effect against the subsequent development of HCC was only observed in men ( $p=1.72 \times 10^{-4}$ ;  $OR_{\text{allelic}}$  0.75; 95% CI, 0.64–0.87).

**Conclusions:** Carriage of variants in *PNPLA3* and *HSD17B13* differentially affect the risk for developing advanced alcohol-related liver disease. A genotypic/phenotypic risk score might facilitate earlier diagnosis of HCC in this population.

Word count: 273

Stickel *et al.*

Alcoholic cirrhosis, HCC, risk reduction and *HSD17B13*

## INTRODUCTION

Alcohol-related liver disease has a global prevalence of 12% and accounts for half of all cirrhosis-associated deaths in Europe and the United States.<sup>1-3</sup> Alcohol-related cirrhosis is now the second most common indication for liver transplantation, accounting for approximately 40% of all primary liver transplants in Europe and approximately 25% in the United States.<sup>4</sup>

Chronic alcohol misuse is associated with the development of a broad spectrum of liver injury. Hepatic steatosis develops in most heavy alcohol users, but more substantial liver injury only develops with persistent alcohol misuse over time; inflammation and progressive fibrosis will develop in 10 to 35% of individuals, whereas cirrhosis is observed in only 10 to 15%.<sup>5-7</sup> Between 5 to 15% of people with alcohol-related cirrhosis are at risk for developing hepatocellular carcinoma (HCC); the annual incidence is 2.5 to 3.0%, with a 5-year cumulative risk of around 8%.<sup>8-11</sup> The global incidence of HCC is increasing; it is now the fifth most frequent cancer and third most frequent cause of cancer-related mortality world-wide; one third of cases develop on a background of alcohol-related cirrhosis.<sup>12</sup>

The susceptibility to develop significant alcohol-related liver disease is determined by the interplay of a number of risk factors, including sex, ethnicity, the amount/pattern of alcohol drinking, coffee consumption, cigarette smoking, co-morbidities such as obesity, type 2 diabetes and hepatitis C infection and a number of host genetic factors.<sup>13</sup> Carriage of the common missense variant rs738409:G in *patatin-like phospholipase domain-containing 3* (*PNPLA3*) is the most robustly validated risk locus for the development of alcohol-related cirrhosis and HCC,<sup>14-19</sup> accounting for 26.6%<sup>14</sup> and 43.5%<sup>18</sup> of the variance, respectively. Two further gene variants, rs58542926 in *transmembrane 6 superfamily member 2* (*TM6SF2*) and rs641738 in *membrane bound O-acetyltransferase domain containing 7* (*MBOAT7*), are additional risk factors, albeit with much lower effect sizes.<sup>19</sup>

Stickel *et al.*

Alcoholic cirrhosis, HCC, risk reduction and *HSD17B13*

1  
2  
3 Recently, Abul-Husn and colleagues<sup>20</sup> identified a splice variant rs72613567 in *hydroxysteroid*  
4  
5 *17-beta dehydrogenase 13 (HSD17B13)*, which appeared to protect against the development  
6  
7 of chronic liver injury in people of European ancestry. *HSD17B13* encodes a hepatic lipid  
8  
9 droplet protein; the insertion of an adenine adjacent to the donor splice site on exon 6  
10  
11 (rs72613567:TA allele) results in an unstable and truncated protein with reduced enzymatic  
12  
13 activity, suggesting that it is a loss-of-function variant.<sup>20</sup> Abul-Husn *et al.*<sup>20</sup> found that carriage  
14  
15 of *HSD17B13* rs72613567:TA was associated with reduced serum aminotransferase activities,  
16  
17 a reduced risk for developing alcohol-related and non-alcoholic fatty liver disease (NAFLD),  
18  
19 and, more specifically, for developing both alcohol-related and NAFLD-related cirrhosis.<sup>20</sup> The  
20  
21 association with alcohol-related cirrhosis was the most compelling but the total number of  
22  
23 cases was very small. This group also showed that carriage of this variant attenuated the risk  
24  
25 of developing progressive liver injury derived from rs738409:G in *PNPLA3*.<sup>20</sup>  
26  
27  
28  
29  
30

31  
32 Yang *et al.*<sup>21</sup> recently confirmed the association between rs72613567:TA in *HSD17B13* and a  
33  
34 reduction in the risk for developing alcohol-, NAFLD- and hepatitis C-related liver disease, and  
35  
36 more specifically the risk of developing cirrhosis. They also found that carriage of this variant  
37  
38 protected against the development of HCC, but only in patients with a background of alcohol-  
39  
40 related liver disease. The sample size was small and those with HCC were more frequently  
41  
42 male and older than their counterparts without HCC. Thus, in order to validate these findings  
43  
44 much larger cohorts are needed to allow adjustments for potential confounders.<sup>21</sup> Interactions  
45  
46 between variants in *HSD17B13* and *PNPLA3* were not addressed in this study.  
47  
48  
49  
50

51  
52 The aims of the present study were to determine whether: (i) carriage of rs72613567:TA in  
53  
54 *HSD17B13* protects against the development of alcohol-related cirrhosis and alcohol-related  
55  
56 HCC; and (ii) to explore possible risk interactions between rs72613567:TA in *HSD17B13* and  
57  
58 rs738409:G in *PNPLA3*.  
59  
60

Stickel *et al.*

Alcoholic cirrhosis, HCC, risk reduction and *HSD17B13*

## METHODS

### Study cohorts

The study population comprised of 6,171 participants drawn from one of four study cohorts:

1. Alcohol-related cirrhosis and HCC (**HCC**) (n=1,031)
2. Alcohol-related cirrhosis without HCC (**CIRR**) (n=1,653)
3. Alcohol misusers with no evident liver disease (**ALC**) (n=2,588)
4. Healthy controls with no history of alcohol misuse or liver disease (n = 899)

Participants in cohorts 1-3 were recruited from Hepatology units and Addiction centres across Europe and were of self-reported Swiss/German/Austrian/Italian/British ancestry. Ninety of the UK samples with cirrhosis and HCC were obtained from the Nottingham Digestive Diseases Centre Biomedical Research Unit Research Tissue Bank (Rec Ref: 14/WA/1234). Participants in cohort 4 were recruited from the United Kingdom.

The diagnosis of alcohol-related cirrhosis was established, as described, in detail, previously;<sup>19</sup> briefly, the diagnosis was based on a history of prolonged, sustained alcohol intake of a minimum of 40g/day in women and 60g/day in men together with histological examination of liver tissue; or compatible historical, clinical, laboratory, radiological and endoscopic features of advanced chronic liver disease. Patients were excluded if they had any other potential cause of liver injury, specifically if they were positive for hepatitis B surface antigen (HBsAg), anti-hepatitis C immunoglobulin G (anti-HCV IgG), anti-nuclear antibodies (ANA) (titre >1:80) or anti-mitochondrial antibodies (titre >1:40). Patients with elevated serum ferritin levels and a transferrin saturation of >50%, a serum caeruloplasmin of <20mg/dl (0.2 g/dl) or a serum alpha-1 antitrypsin of <70 mg/dL (13µmol/L) were further investigated and excluded, as appropriate.

Stickel *et al.*Alcoholic cirrhosis, HCC, risk reduction and *HSD17B13*

1  
2  
3 The diagnosis of HCC was based on histological examination of tumour tissue or evidence on  
4  
5 imaging, preferably using two modalities, of lesions that were hypervascular in the arterial  
6  
7 phase with washout in the portal venous or delayed phases.<sup>22</sup> The severity of the underlying  
8  
9 cirrhosis was assessed using Pugh's modification of the Child's grading system.<sup>23</sup>  
10  
11

12  
13 The patients with alcohol misuse but no evidence of significant liver injury were recruited as  
14  
15 described, in detail, previously;<sup>19</sup> in brief, they had a background of alcohol consumption of  
16  
17 at least 60 g/d for women and 80 g/d for men for  $\geq 10$  years with or without features of  
18  
19 alcohol dependence.<sup>24</sup> None had historical, clinical or laboratory evidence of liver disease  
20  
21 and its absence was confirmed either by a liver stiffness measurement (Fibroscan, Echosens,  
22  
23 Paris) of below 6 kPa (IQR < 20%) or by the absence of histological liver damage.  
24  
25  
26

27  
28 Healthy controls were recruited from London branches of the National Health Service blood  
29  
30 transfusion service, from General Practitioners' surgeries, from amongst university students,  
31  
32 and from the general public. None currently drank alcohol above a weekly maximum of 112 g  
33  
34 for women and 168 g for men, nor had they done so at any time in the past. None had a  
35  
36 history or clinical evidence of liver disease  
37  
38  
39  
40  
41

#### 42 **DNA preparation and genotyping**

43  
44

45 Genomic DNA was extracted from venous blood samples and quantified using standard  
46  
47 procedures.<sup>19</sup> Genotyping of *PNPLA3* rs738409 (Assay ID: C\_7241\_10) and *HSD17B13*  
48  
49 rs72613567 (primer and probe sets manufactured through custom TaqMan® Assay design)  
50  
51 was performed using TaqMan® SNP Genotyping Assays and Chemistries (Applied Biosystems,  
52  
53 Waltham, MA, USA) on an automated platform with TECAN Freedom EVO and 384well TEMO  
54  
55 liquid handling robots (TECAN, Männedorf, Switzerland) as described previously.<sup>18,19</sup>  
56  
57  
58  
59  
60

Stickel *et al.*

Alcoholic cirrhosis, HCC, risk reduction and *HSD17B13*

1  
2  
3 All process data were logged and administered with a database-driven LIMS. Reactions were  
4  
5 completed and read in a 7900 HT TaqMan sequence detector system (Applied Biosystems,  
6  
7 Waltham, MA, USA). The amplification reaction was carried out with the TaqMan universal  
8  
9 master mix at cycling conditions of 1 cycle for 10 minutes at 95°C, followed by 45 cycles for 15  
10  
11 seconds at 95°C, and 1 minute at 60°C.  
12  
13  
14  
15

### 16 **Statistical analysis**

17  
18  
19 Logistic regression and SNP\*SNP interaction analyses were performed using SPSS v.25.0 (IBM  
20  
21 Corp., Armonk, NY, USA). A three-way case control design was adopted: HCC vs. CIRR; CIRR vs.  
22  
23 ALC; HCC vs. ALC. Genotypic and allelic tests of association were assessed using two logistic  
24  
25 regression models:  
26  
27

28  
29 **Model A:** univariate logistic regression;

30  
31 **Model B:** adjustments for age, sex, body mass index (BMI), type 2 diabetes mellitus (T2DM)  
32  
33 and country.  
34  
35

36  
37 Results, expressed as odds ratios (OR) with their 95% confidence intervals (CI), were derived  
38  
39 from beta coefficients and their standard deviations. Nominal two-sided asymptotic p-values  
40  
41 are reported for all tests.  
42  
43  
44

45  
46 The interactions between *HSD17B13* and *PNPLA3* were examined by logistic regression for the  
47  
48 univariate additive and genotypic regression models including both main SNP effects and the  
49  
50 SNP\*SNP interaction term.  
51  
52

53  
54 Fixed-effect model meta-analysis using the inverse variance-weighted method to summarize  
55  
56 effect sizes and forest plots were performed using the R package 'metafor' v.2.0-0.  
57  
58  
59  
60

Stickel *et al.*

Alcoholic cirrhosis, HCC, risk reduction and *HSD17B13*

Sex-specific *post-hoc* analyses for the risk associations with *HSD17B13* and *PNPLA3* were performed. The Mantel-Haenszel test for trend was applied for testing a linear trend in observed genotype proportions from contingency tables for (ALC < CIRR < HCC), by sex.

The population-attributable fraction (PAF) provides an epidemiological estimate of the proportion of the disorder that is attributable to a given risk factor. Thus, in this instance it is an estimate of how much lower the frequency of HCC would be in patients with alcohol-related cirrhosis, if the risk genotype(s) were eliminated from the population.

The PAF was estimated for heterozygous and homozygous carriage using the formula:<sup>25</sup>

$$(x - 1)/x$$

where  $x = (1 - p)^2 + 2p(1 - p)OR1 + p^2OR2$  (19);  $p$  is the allele frequency in the CIRR or ALC cohorts, and OR1 and OR2 are the ORs associated with hetero- and homozygosity.

Combined PAF estimates were calculated as  $PAF = 1 - (1 - PAF1)(1 - PAF2)(1 - PAFn)$  based on the individual PAFs for each associated SNP, assuming no multiplicative interaction between them.

### **Ethics**

The study protocol was approved by the ethics committees of the participating institutions; all included subjects provided written informed consent prior to inclusion into the study.



Stickel *et al.*Alcoholic cirrhosis, HCC, risk reduction and *HSD17B13***RESULTS**

The patient cohorts were predominantly male and middle aged. The patients with cirrhosis were generally older than those misusing alcohol and more likely to be overweight and diabetic. The patients with cirrhosis and HCC were generally older than the patients with cirrhosis without malignant transformation and were proportionately more likely again to be male, overweight, and diabetic (Table 1). Laboratory variables showed the expected gradients (Supplementary Table 1).

Genotyping was completed for both SNPs with call rates greater than 95% (Supplementary Table 2). All markers followed Hardy-Weinberg equilibrium (cutoff HWE  $P > 0.05$ ).<sup>26</sup> In the healthy controls the minor allele frequencies (MAFs) for both *HSD17B13* rs72613567:TA (0.276) and *PNPLA3* rs738409 G (0.224) were comparable to those in public databases<sup>27</sup> and previous publications<sup>18-20</sup> and did not differ significantly from the MAFs in the ALC group (Supplementary Table 2).

A progressive reduction in MAFs for *HSD17B13* rs72613567:TA was observed between the three groups: ALC (26.4%); CIRR (22.0%) and HCC (17.7%) ( $P_{\text{trend}} = 1.09 \times 10^{-15}$ ) (Supplementary Table 2). This contrasted with the expected stepwise increase in the MAFs for *PNPLA3* rs738409:G in the same three groups *viz.* ALC (23.9%) CIRR (35.4%), HCC (49.8%) (Supplementary Table 2).

In the univariate model, allelic and genotypic associations for *HSD17B13* rs72613567:TA were highly significant for the comparisons HCC vs. CIRR ( $P_{\text{allelic}} = 2.27 \times 10^{-4}$ ,  $P_{\text{genotypic}} = 1.05 \times 10^{-3}$ ), CIRR vs. ALC ( $P_{\text{allelic}} = 8.13 \times 10^{-6}$ ,  $P_{\text{genotypic}} = 1.54 \times 10^{-6}$ ), and HCC vs ALC ( $P_{\text{allelic}} = 1.69 \times 10^{-14}$ ,  $P_{\text{genotypic}} = 3.22 \times 10^{-14}$ ) (Table 2). The protective effect associated with carriage of *HSD17B13* rs72613567:TA remained significant in the CIRR and HCC cohorts after correction for sex, age,

Stickel *et al.*Alcoholic cirrhosis, HCC, risk reduction and *HSD17B13*

BMI, T2DM and country (Table 2). The protective effect for HCC was greater with homozygous than heterozygous carriage of the *HSD17B13* rs72613567:TA allele (Figure 1A+B).

Allelic and genotypic associations for *PNPLA3* rs738409:G allele were also significantly associated in the CIRR ( $OR_{\text{allelic}} 1.70 [1.54-1.88]$ ,  $P_{\text{allelic}} = 1.52 \times 10^{-26}$ ) and HCC ( $OR_{\text{allelic}} 1.77 [1.58-1.98]$ ,  $P_{\text{allelic}} = 2.31 \times 10^{-23}$ ) cohorts (Table 3). These associations were robust to corrections for sex, age, BMI, DMT2 and country.

Since patients were recruited from across Europe a meta-analysis of the *HSD17B13* and *PNPLA3* loci for association with cirrhosis and HCC was performed, by country (Supplementary Tables 3+4). Associations were calculated consensually, but were not necessarily significant in each single European cohort. However, fixed effect meta-analysis on aggregate confirmed both the protective and risk-enhancing effects of *HSD17B13* and *PNPLA3* loci, respectively, in the total cohort. There was no evidence of heterogeneity (Supplementary Figures 1A-C and 2 A-C).

The PAF for *PNPLA3* rs738409 for CIRR was 27.2% (20.7% to 33.6%) and for *HSD17B13* rs72613567 -14.7% (-21.2% to -7.9%). The combined PAF for CIRR was 16.5%. The PAF% for *PNPLA3* rs738409 in HCC was 38.7% (29.3% to 47.2%) and for *HSD17B13* rs72613567 -10.0% (-16.7% to -2.7%). The combined PAF for HCC was 32.6%.

The potential modifying effect of *HSD17B13* rs72613567 on *PNPLA3* rs738409 was explored by calculating the proportion of the HCC, CIRR and ALC cohorts with different 'gene signatures' combining either *PNPLA3* rs739409:G (high risk variant) with wild type *HSD17B13* rs72613567:T (lack of protection), or the *PNPLA3* rs739409 C (low risk variant) with *HSD17B13* rs72613567:TA (protection). A preponderance of patients in the CIRR and HCC cohorts were homozygous for *PNPLA3* rs739409 G and for *HSD17B13* rs72613567:T which is in line with the estimated risk contributions of each variant (Figure 2A & B).

Stickel *et al.*Alcoholic cirrhosis, HCC, risk reduction and *HSD17B13*

Possible SNP\*SNP interactions between *HSD17B13* rs72613567 and *PNPLA3* rs739409 were explored by testing interaction terms in the logistic regression models for the risk for developing CIRR and the further risk for developing HCC. The genotypic interactions for the risk association with CIRR was not significant in the total study population ( $p = 0.598$ ) (Supplementary Table 5) nor in the men only cohort ( $p = 0.689$ ) (Supplementary Table 6). None of the *HSD17B13* by *PNPLA3* genotype interaction pair combinations was significant. The interactions in the additive CIRR and HCC risk models were not significant either. Thus, there does not appear to be an *HSD17B13* rs72613567:TA  $\times$  *PNPLA3* rs739409:G interaction.

In a sex-specific post hoc analysis of the *HSD17B13* locus, an association with HCC disease risk was observed in men ( $P = 1.72 \times 10^{-4}$ ;  $OR_{\text{allelic}}$  0.75; 95% CI, 0.64–0.87) but not in women ( $p = 0.772$ ;  $OR_{\text{allelic}}$  1.07; 95% CI, 0.73–1.58), while the protective effect for cirrhosis risk associated with carriage of *HSD17B13* rs72613567:TA was observed in both sexes (Supplementary Table 7; Figures 3A-C). The association between carriage of *PNPLA3* rs739409:G and cirrhosis and HCC disease risk showed no sex differential (Supplementary Table 8).

Stickel *et al.*Alcoholic cirrhosis, HCC, risk reduction and *HSD17B13***DISCUSSION**

The genetic contribution to the development of significant alcohol-related liver injury is gradually being unraveled. Three genetic loci have been identified which are associated with an increased risk for developing cirrhosis at genome-wide significance, namely *PNPLA3*, *TM6SF2*, *MBOAT7*,<sup>19</sup> and at least two variants, *PNPLA3* rs738409. and *TM6SF2* rs58542926, are associated with an increased risk for developing HCC on this background.<sup>15,16,18</sup>

There is little published evidence for genetic variants conferring protection against the development of significant alcohol-related liver injury. Indirect protection is afforded in individuals, primarily of East Asian ancestry, who carry rs1229984 in alcohol dehydrogenase IB (*ADH1B*)<sup>28</sup> and/or rs671 in aldehyde dehydrogenase 2 (*ALDH2*)<sup>29</sup> and, as a consequence, develop an abreaction to alcohol and so tend to avoid it.

Recently, however, Abul-Husn and colleagues<sup>20</sup> identified a splice variant, rs72613567, in *HSD17B13*, which appeared to protect against the development of chronic liver injury in people of European ancestry. Specifically, this SNP appeared to confer protection against the development of alcohol-related and NAFLD-related cirrhosis.<sup>20</sup> The association with alcohol-related cirrhosis was more compelling even though the total number of cases was very small, amounting to only 124 in their discovery cohort and 215 in their validation cohort.

Yang and coworkers,<sup>21</sup> in a recent French/Belgian collaboration confirmed that rs72613567 in *HSD17B13* confers protection against the development of alcohol-, NAFLD- and HCV-related liver disease. They further showed that this SNP confers protection against the development of HCC but only when arising on a background of alcohol-related liver disease. The data were adjusted for age, sex and the degree of hepatic fibrosis but not for other important confounders such as BMI, diabetes and *PNPLA3* genotype. Only half the patients with alcohol-

Stickel *et al.*

Alcoholic cirrhosis, HCC, risk reduction and *HSD17B13*

1  
2  
3 related HCC, in this study, had cirrhosis. Thus the numbers of patients with alcohol-related  
4  
5 cirrhosis (n=1243) and alcohol-related HCC (n=217) were relatively small and those with HCC  
6  
7 were more frequently male and older than those with cirrhosis *per se*. Adjustments were not  
8  
9 made for these possible confounders leading the authors to conclude that larger cohorts were  
10  
11 needed to validate their findings.  
12  
13

14  
15 The cohorts included in the present study were large, comprising of 1,031 patients of  
16  
17 European ancestry with alcohol-related cirrhosis and HCC, and 1,653 with alcohol-related  
18  
19 cirrhosis without HCC. In addition, 2,588 alcohol misusers, with no evidence of liver disease,  
20  
21 were included to exclude the possibility that any observed genetic effect might relate to the  
22  
23 susceptibility to develop problematic drinking.  
24  
25

26  
27 The results of the present study robustly establish that carriage of *HSD17B13*:rs72613567:TA  
28  
29 protects against the development of alcohol-related cirrhosis and its subsequent evolution to  
30  
31 HCC. The results also confirm again that carriage of *PNPLA3* rs738409 is associated with a  
32  
33 significantly increased risk of developing alcohol-related cirrhosis and HCC. However, the  
34  
35 magnitude of these two effects is of a different order. Thus, while carriage of the  
36  
37 *HSD17B13*:rs72613567:TA allele *reduces* the PAF for cirrhosis by 14.7% and for HCC by 10%,  
38  
39 carriage of the *PNPLA3* rs738409:G allele *increases* the risks by 27.2% and 38.7% respectively.  
40  
41 Thus, the combined PAF for cirrhosis was 16.5% and for HCC 32.5%.  
42  
43

44  
45 Thus, the risk of carriage of *PNPLA3* rs738409:G appears to be attenuated, to a degree, by co-  
46  
47 carriage of *HSD17B13*:rs72613567:TA. Abul-Husn and colleagues<sup>20</sup> explored the possibility of  
48  
49 interactions between these two SNPs and observed nominally significant interactions in  
50  
51 association analyses with serum transaminase activities, primarily in the obese, but not with  
52  
53 chronic liver disease. They also showed, using RNA sequencing-based expression analysis,  
54  
55 that *HSD17B13* rs72613567:TA was associated with decreased *PNPLA3* messenger RNA  
56  
57  
58  
59  
60

Stickel *et al.*Alcoholic cirrhosis, HCC, risk reduction and *HSD17B13*

1  
2  
3 expression in an allele dose-dependent manner. However, exploration of SNP\*SNP  
4  
5 interaction, in the present study, showed no evidence of a significant interaction. Yang and  
6  
7 coworkers<sup>21</sup> did not report data on possible SNP\*SNP interaction so no further comparison  
8  
9 can be made.

10  
11  
12  
13 Male sex is a significant risk factor for the development of HCC in people with alcohol-related  
14  
15 cirrhosis.<sup>12,13</sup> The reasons for this are unknown. Men are more likely to drink at harmful levels  
16  
17 and hence more likely to develop alcohol-related cirrhosis but they are still proportionately  
18  
19 over represented amongst those developing HCC. Malignant transformation is more likely to  
20  
21 occur in individuals with alcohol-related cirrhosis who stop drinking;<sup>30</sup> hence the suggestion  
22  
23 that the difference in sex-specific HCC rates may reflect lower abstinence rates amongst  
24  
25 women. The possibility of sex-genetic variant interactions should also be considered. The  
26  
27 comparative survival advantage in women with alcohol-related cirrhosis is well-  
28  
29 documented,<sup>31-33</sup> and it has recently been shown that this may relate, at least in part, to a sex-  
30  
31 variant interaction with rs738409:G in *PNPLA3*.<sup>34,35</sup>

32  
33  
34  
35  
36  
37  
38  
39 The possibility of sex-variant interactions was also explored in the present study. The  
40  
41 progressive increase in the risk of developing alcohol-related cirrhosis and HCC associated  
42  
43 with carriage of *PNPLA3* rs738409:G HCC was observed in both men and women. Likewise,  
44  
45 the protective effect for cirrhosis risk associated with carriage of *HSD17B13* rs72613567:TA  
46  
47 was observed in both sexes. However, the protective association of *HSD17B13* rs72613567:TA  
48  
49 and HCC was only found in men. There was no significant sex difference in the MAFs for  
50  
51 *HSD17B13* rs72613567:TA in the alcohol misusers (26.3% vs. 26.6%) or in the patients with  
52  
53 alcohol-related cirrhosis (22.4% vs. 20.5%). However, whereas the frequency further reduced  
54  
55 in men with HCC (17.8%) the trend partially reversed in women (21.7%). These findings are  
56  
57  
58  
59  
60

Stickel *et al.*

Alcoholic cirrhosis, HCC, risk reduction and *HSD17B13*

1  
2  
3 counterintuitive and are without explanation. The number of women with HCC was relatively  
4  
5 small so this finding needs further exploration in a larger cohort.  
6  
7

8  
9 Neither of the previous studies explored sex-differences in the effects of *HSD17B13*  
10  
11 rs72613567:TA.<sup>20,21</sup> However, Ferenci and colleagues,<sup>36</sup> found sex-related phenotypic  
12  
13 variation associated with carriage of *HSD17B13* rs72613567:TA in patients with Wilson's  
14  
15 disease. Thus, none of the in men who developed fulminant Wilson's disease carried this  
16  
17 *HSD17B13* variant in contrast to 13.6% in their female counterparts. Clearly, sex-gene variant  
18  
19 interaction should be considered in any further genetic studies in the field of liver disease.  
20  
21

22  
23  
24 *HSD17B13* belongs to the family of pluripotent 17-hydroxysteroid dehydrogenase enzymes  
25  
26 whose members convert 17-keto- and 17-hydroxysteroids, regulate the biological activity of  
27  
28 sex hormones, participate in fatty acid and cholesterol metabolism, and contribute to bile acid  
29  
30 synthesis.<sup>37</sup> The function of *HSD17B13* is incompletely understood, but it is located on the  
31  
32 surface of lipid droplets and is mainly expressed in the liver. Su and colleagues<sup>38</sup> have  
33  
34 demonstrated that transcriptional regulation of *HSD17B13* expression is likely to be liver X  
35  
36 receptor (LXR)-mediated via a sterol-regulatory-element binding protein 1c (SREBP-1c)-  
37  
38 dependent mechanism; they also found evidence for a SREBP-1c response element (SRE) in  
39  
40 the promoter region of the *HSD17B13* gene located on chromosome 4q22.1. *HSD17B13*  
41  
42 expression is increased in patients with NAFLD<sup>39,40</sup> and in murine models of fatty liver  
43  
44 disease,<sup>41</sup> and its overexpression in Huh-7 and HepG2 hepatoma cell lines results in  
45  
46 accumulation of *HSD17B13* on the surface of lipid droplets.<sup>40,42</sup>  
47  
48  
49  
50  
51  
52

53  
54 Ma and coworkers<sup>43</sup> have recently shown that *HSD17B13* is a hepatic retinol dehydrogenase.  
55  
56 Retinal, retinoic acid and retinol binding protein have been implicated in the pathogenesis of  
57  
58 steatosis, fibrosis, adipogenesis, and insulin resistance.<sup>44</sup> Thus, *HSD17B13* may be involved in  
59  
60 the complex nuclear receptor interaction in NAFLD *via* activation of the retinoic acid

Stickel *et al.*Alcoholic cirrhosis, HCC, risk reduction and *HSD17B13*

receptor.<sup>45</sup> Of greater importance, in the context of the present study, is the possibility that *HSD17B13*, functioning as a retinol dehydrogenase, may contribute to the depletion of hepatic retinoic acid observed in individuals chronically misusing alcohol. Retinoic acid depletion results in a functional down regulation of liver retinoic acid receptors and a marked increase in the expression of the activator protein-1 (c-jun and c-fos) transcriptional complex which is associated with hepatic cell hyperproliferation, a decrease in apoptosis and stimulated hepatic carcinogenesis.<sup>46,47</sup> The retinol dehydrogenase activity of the rs72613567:TA variant is likely reduced or absent and this may explain, at least in part, its protective effect against HCC in the context of alcohol-related cirrhosis. Accordingly, repletion of hepatic retinoic acid concentrations experimentally or in patients with HCC may have a therapeutic role.<sup>48</sup>

There are some contrary findings in relation to the protective effect of a reduction in *HSD17B13* activity. Chen and colleagues,<sup>49</sup> for example, reported that mRNA expression of *HSD17B13* was down regulated in Asians with hepatitis B (HBV)-related HCC, though not in HBV-related cirrhosis, and showed that low *HSD17B13* expression in peritumour tissue was independently associated with a reduction in recurrence-free survival. They also showed that overexpression of *HSD17B13* in Huh-7 cell and SK-HEP-1 cell lines results in delays in cell cycle progression. Their overall conclusion, based on these findings, was that *increased* *HSD17B13* expression might inhibit the development and progression of HBV-related HCC. This contrast with the findings in the present study and those of others,<sup>20,21</sup> that in Europeans, *decreased* expression of *HSD17B13* protects against the development of both alcohol-related cirrhosis and its evolution to HCC. This apparent contradiction may attest to differences in the mechanisms of HCC development in viral- and alcohol-related liver disease. Clearly further research on the functional role of *HSD17B13* in HCC development and progression is needed.



Stickel *et al.*

Alcoholic cirrhosis, HCC, risk reduction and *HSD17B13*

1  
2  
3 There is considerable interest in the possibility of pharmaceutical inhibition of HSD17B13 to  
4  
5 counteract the steatogenic effect of over expressed HSD17B13, and mimic the loss-of-function  
6  
7 derived from the *HSD17B13* rs72613567:TA variant. For example, fenofibrate which is an  
8  
9 agonist of the peroxisome proliferator-activated receptor- $\alpha$  (PPAR $\alpha$ ) and approved for use in  
10  
11 humans, suppresses hepatic HSD17B13 expression in mouse liver,<sup>50</sup> a finding supported by the  
12  
13 high expression of HSD17B13 observed in *ppar $\alpha$*  knock-out mice.<sup>42</sup>  
14  
15  
16  
17

18 This study has a number of strengths. The study cohorts were large and well-characterized  
19  
20 and specifically selected to explore the genetic risks associated with the development of  
21  
22 alcohol-related cirrhosis and HCC in Caucasians of European origin. Controls were exercised  
23  
24 for a number of known risk factors such as age, sex, BMI and diabetes. Similar effect sizes  
25  
26 were observed across all individual geographical cohorts excluding the possibility of  
27  
28 heterogeneity and, thus, broadening the applicability of the findings. The specificity of the  
29  
30 genetic associations was explored by including a large control cohort of alcohol misusers who  
31  
32 had no evidence of liver disease.  
33  
34  
35  
36  
37

38 This study also has some limitations; first, it was cross-sectional and undertaken  
39  
40 retrospectively, meaning that phenotypic data sets were not always complete. Second, it is  
41  
42 likely that some of the patients with alcohol-related cirrhosis will develop HCC over time and  
43  
44 equally likely that some of the individuals misusing alcohol will develop cirrhosis in the future,  
45  
46 particularly if they continue to drink. However, the group differences were significant and  
47  
48 remained robust to adjustment for confounders, including age. Finally, the findings can not be  
49  
50 used to define the genetic risks associated with the development of cirrhosis and HCC in  
51  
52 people with liver disease of different aetiologies or from outside of Europe, as pointed out in  
53  
54 relation to the findings of Chen and colleagues.<sup>49</sup>  
55  
56  
57  
58  
59  
60

Stickel *et al.*Alcoholic cirrhosis, HCC, risk reduction and *HSD17B13*

1  
2  
3 In conclusion: *HSD17B13* rs72613567:TA protects against the development of alcohol-related  
4  
5 cirrhosis and, at least in men, the subsequent development of HCC. Its carriage attenuates the  
6  
7 increased risk associated with carriage of *PNPLA3* rs738409:G. Combining phenotypic and  
8  
9 genetic signatures to score risk could facilitate management of patients with alcohol-related  
10  
11 liver disease. Further evaluation of the function of *HSD17B13* and the rs72613567 variant may  
12  
13 identify suitable drug targets.  
14  
15  
16  
17  
18  
19  
20

### 21 **Acknowledgements**

22  
23 The authors thank the Clinical Research Support Service of the CHUV-UNIL, Lausanne,  
24  
25 Switzerland for providing the infrastructure for patient recruitment and collecting phenotypic  
26  
27 data.  
28  
29  
30  
31  
32  
33  
34  
35  
36  
37  
38  
39  
40  
41  
42  
43  
44  
45  
46  
47  
48  
49  
50  
51  
52  
53  
54  
55  
56  
57  
58  
59  
60

Stickel *et al.*Alcoholic cirrhosis, HCC, risk reduction and *HSD17B13***REFERENCES** (Author names in bold designate shared co-first authorship)

1. Singal AK, Bataller R, Ahn J, Ahn J, Kamath PS, Shah VH. ACG Clinical Guideline: Alcoholic Liver Disease. *Am J Gastroenterology* 2018;113:175-194.
2. **Asrani SK, Devarbhavi H**, Eaton J, Kamath PS. Burden of liver diseases in the world. *J Hepatol* 2019;70:151-171.
3. Rehm J, Samokhvalov AV, Shield KD. Global burden of alcoholic liver diseases. *J Hepatol* 2013;59:160-168.
4. Burra P, Senzolo M, Adam R, Delvart V, Karam V, Germani G, et al. Liver transplantation for alcoholic liver disease in Europe: a study from the ELTR (European Liver Transplant Registry). *Am J Transplant* 2010;10:138-148.
5. Leibach WK. Leberschaden bei chronischem Alkoholismus I-III. *Acta Hepatosplenologica*, 1966; 13: 321–349.
6. Leevy CM. Cirrhosis in alcoholics. *Medical Clinics of North America*, 1968; 52: 1445–1451.
7. Teli MR, Day CP, Burt AD, Bennett MK, James OF. Determinants of progression to cirrhosis or fibrosis in pure alcoholic fatty liver. *Lancet* 1995;346:987–990.
8. Kodama K, Tokushige K, Hashimoto E, Taniai M, Shiratori K. Hepatic and extrahepatic malignancies in cirrhosis caused by nonalcoholic steatohepatitis and alcoholic liver disease. *Alcohol Clin Exp Res* 2013;37:E247–252.
9. Mancebo A, Gonzalez-Dieguez ML, Cadahia V, Varela M, Pérez R, Navascués CA, et al. Annual incidence of hepatocellular carcinoma among patients with alcoholic cirrhosis and identification of risk groups. *Clin Gastroenterol Hepatol* 2013;11:95–101.
10. Ganne-Carrié N, Chaffaut C, Bourcier V, Archambeaud I, Perarnau JM, Oberti F, et al. Estimate of hepatocellular carcinoma incidence in patients with alcoholic cirrhosis. *J Hepatol* 2018;69:1274-1283.

Stickel *et al.*Alcoholic cirrhosis, HCC, risk reduction and *HSD17B13*

11. Ganne-Carrié N, Nahon P. Hepatocellular carcinoma in the setting of alcohol-related liver disease. *J Hepatol* 2019;70:284-293.
12. Kim D, Li AA, Perumpail BJ, Gadiparthi C, Kim W, Cholanckeril G, et al. Changing trends in etiology- and ethnicity-based annual mortality rates of cirrhosis and hepatocellular carcinoma in the United States. *Hepatology* 2019;69:1064-1074.
13. **Stickel F, Moreno C**, Hampe J, Morgan MY. Genetics of alcohol dependence and alcohol-related liver disease. *J Hepatol* 2017;66:195-211.
14. **Stickel F, Buch S**, Lau K, Meyer zu Schwabedissen H, Berg T, Ridinger M, et al. Genetic variation in the *PNPLA3* gene is associated with alcoholic liver injury in Caucasians. *Hepatology* 2011;53:86-95.
15. Chamorro AJ, Torres JL, Mirón-Canelo JA, González-Sarmiento R, Laso FJ, Marcos M. Systematic review with meta-analysis: the I148M variant of patatin-like phospholipase domain-containing 3 gene (*PNPLA3*) is significantly associated with alcoholic liver cirrhosis. *Aliment Pharmacol Ther* 2014;40:571-581.
16. Singal AG, Manjunath H, Yopp AC, Beg MS, Marrero JA, Gopal P, et al. The effect of *PNPLA3* on fibrosis progression and development of hepatocellular carcinoma: a meta-analysis. *Am J Gastroenterol* 2014;109:325-34.
17. Trépo E, Nahon P, Bontempi G, Valenti L, Falletti E, Nischalke HD, et al. Association between the *PNPLA3* (rs738409 C>G) variant and hepatocellular carcinoma: Evidence from a meta-analysis of individual participant data. *Hepatology* 2014;59:2170-7.
18. **Stickel F, Buch S**, Nischalke HD, Weiss KH, Gotthardt D, Fischer J, et al. Genetic variants in *PNPLA3* and *TM6SF2* predispose to the development of hepatocellular carcinoma in individuals with alcohol-related cirrhosis. *Am J Gastroenterol* 2018;113:1475-1483.

Stickel *et al.*Alcoholic cirrhosis, HCC, risk reduction and *HSD17B13*

19. **Buch S, Stickel F, Trépo E, Way M, Herrmann A, Nischalke HD, et al.** A two-stage genome-wide association study confirms *PNPLA3* and identifies *TM6SF2* and *MBOAT7* as novel risk loci for alcohol-related cirrhosis. *Nat Genet* 2015;47:1443-1448.
20. Abul-Husn NS, Cheng X, Li AH, Xin Y, Schurmann C, Stevis P, et al. A protein-truncating *HSD17B13* Variant and protection from chronic liver disease. *N Engl J Med* 2018;378:1096-1106.
21. Yang J, Trépo E, Nahon P, Cao Q, Moreno C, Letouzé E, et al. A *HSD17B13* variant protects from hepatocellular carcinoma development in alcoholic liver disease. *Hepatology* 2019;70:231-240.
22. EASL. Clinical Practice Guidelines: Management of hepatocellular carcinoma. *J Hepatol* 2018;69:182-236.
23. Pugh RN, Murray-Lyon IM, Dawson JL, Pietroni MC, Williams R. Transection of the oesophagus for bleeding oesophageal varices. *Br J Surg* 1973;60:646-9.
24. American Psychiatric Association. Diagnostic and statistical manual of mental disorders 4th ed. Washington DC: American Psychiatric Press; 1994.
25. Witte JS, Visscher PM, Wray NR. The contribution of genetic variants to disease depends on the ruler. *Nat Rev Genet* 2014;15:765-76.
26. Anderson CA, Pettersson FH, Clarke GM, Cardon LR, Morris AP, Zondervan KT. Data quality control in genetic case-control association studies. *Nat Protoc* 2010;5:1564-73.
27. 1000 Genomes Project Consortium, Auton A, Brooks LD, Durbin RM, Garrison EP, Kang HM, Korbel JO, et al. A global reference for human genetic variation. *Nature* 2015;526:68-74.

Stickel *et al.*Alcoholic cirrhosis, HCC, risk reduction and *HSD17B13*

- 1
- 2
- 3 28. Li D, Zhao H, Gelernter J. Strong association of the alcohol dehydrogenase 1B gene
- 4
- 5 (ADH1B) with alcohol dependence and alcohol-induced medical diseases. *Biol Psychiatry*
- 6
- 7 2011;70:504–512.
- 8
- 9
- 10 29. Li D, Zhao H, Gelernter J. Strong protective effect of the aldehyde dehydrogenase gene
- 11
- 12 (ALDH2) 504lys (\*2) allele against alcoholism and alcohol-induced medical diseases in
- 13
- 14 Asians. *Hum Genet* 2012;131:725-737.
- 15
- 16
- 17 30. Lee FI. Cirrhosis and hepatoma in alcoholics. *Gut* 1966;7: 77-85.
- 18
- 19
- 20 31. Schlichting P, Christensen E, Andersen PK, Fauerholdt L, Juhl E, Poulsen H, et al.
- 21
- 22 Prognostic factors in cirrhosis identified by Cox's regression model. *Hepatology*
- 23
- 24 1983;3:889–95.
- 25
- 26
- 27 32. D'Amico G, Morabito A, Pagliaro L, Marubini E. Survival and prognostic indicators in
- 28
- 29 compensated and decompensated cirrhosis. *Dig Dis Sci* 1986;31:468–75.
- 30
- 31
- 32 33. Ginés P, Quintero E, Arroyo V, Terés J, Bruguera M, Rimola A, et al. Compensated
- 33
- 34 cirrhosis: natural history and prognostic factors. *Hepatology* 1987;7:122–8.
- 35
- 36
- 37 34. Meffert PJ, Repp KD, Völzke H, Weiss FU, Homuth G, Kühn JP, et al. The *PNPLA3* SNP
- 38
- 39 rs738409:G allele is associated with increased liver disease-associated mortality but
- 40
- 41 reduced overall mortality in a population-based cohort. *J Hepatol* 2018;68:858-60.
- 42
- 43
- 44 35. Atkinson SR, Way MJ, McQuillin A, Morgan MY, Thursz MR. Reply to: The *PNPLA3* SNP
- 45
- 46 rs738409:G allele is associated with increased liver disease-associated mortality but
- 47
- 48 reduced overall mortality in a population-based cohort. *J Hepatol* 2018;68:860-2.
- 49
- 50
- 51 36. Ferenci P, Pfeiffenberger J, Stättermayer A, Stauber RE, Willheim C, Weiss KH, et al. A
- 52
- 53 *HSD17B13* variant as genetic modifier in hepatic Wilson Disease. *JHep Rep* 2019;
- 54
- 55 doi.org/10.1016/j.jhepr.2019.02.007.
- 56
- 57
- 58
- 59
- 60

Stickel *et al.*Alcoholic cirrhosis, HCC, risk reduction and *HSD17B13*

- 1  
2  
3 37. Saloniemi T, Jokela H, Strauss L, Pakarinen P, Poutanen M. The diversity of sex steroid  
4  
5 action: novel functions of hydroxysteroid (17 $\beta$ ) dehydrogenases as revealed by  
6  
7 genetically modified mouse models. *J Endocrinol* 2012;212:27-40.  
8
- 9  
10 38. Su W, Peng J, Li S, Dai YB, Wang CJ, Xu H, et al. Liver X receptor  $\alpha$  induces 17 $\beta$ -  
11  
12 hydroxysteroid dehydrogenase-13 expression through SREBP-1c. *Am J Physiol Endocrinol*  
13  
14 *Metab* 2017;312:E357-E367.  
15
- 16  
17 39. Su W, Wang Y, Jia X, Wu W, Li L, Tian X, et al. Comparative proteomic study reveals 17 $\beta$ -  
18  
19 HSD13 as a pathogenic protein in nonalcoholic fatty liver disease. *Proc Natl Acad Sci U S*  
20  
21 *A* 2014;111:11437-42.  
22  
23
- 24  
25 40. Kampf C, Mardinoglu A, Fagerberg L, Hallström BM, Edlund K, Lundberg E, et al. The  
26  
27 human liver-specific proteome defined by transcriptomics and antibody-based profiling.  
28  
29 *FASEB J* 2014;28:2901-14.  
30  
31
- 32  
33 41. Adam M, Heikelä H, Sobolewski C, Portius D, Mäki-Jouppila J, Mehmood A, et al.  
34  
35 Hydroxysteroid (17 $\beta$ ) dehydrogenase 13 deficiency triggers hepatic steatosis and  
36  
37 inflammation in mice. *FASEB J* 2018;32:3434-3447.  
38
- 39  
40 42. Horiguchi Y, Araki M, Motojima K. 17beta-Hydroxysteroid dehydrogenase type 13 is a  
41  
42 liver-specific lipid droplet-associated protein. *Biochem Biophys Res Commun*  
43  
44 2008;370:235-8.  
45
- 46  
47 43. Ma Y, Belyaeva OV, Brown PM, Fujita K, Valles K, Karki S, et al. HSD17B13 is a hepatic  
48  
49 retinol dehydrogenase associated with histological features of non-alcoholic fatty liver  
50  
51 disease. *Hepatology* 2019;69:1504-1519.  
52
- 53  
54 44. Saeed A, Dullaart RPF, Schreuder TCMA, Blokzijl H, Faber KN. Disturbed vitamin A  
55  
56 metabolism in non-alcoholic fatty liver disease (NAFLD). *Nutrients* 2017;10, pii: E29.  
57  
58 [doi.org/10.3390/nu10010029](https://doi.org/10.3390/nu10010029).  
59  
60

Stickel *et al.*Alcoholic cirrhosis, HCC, risk reduction and *HSD17B13*

- 1  
2  
3 45. Kim SC, Kim CK, Axe D, Cook A, Lee M, Li T, et al. All-trans-retinoic acid ameliorates  
4  
5 hepatic steatosis in mice by a novel transcriptional cascade. *Hepatology* 2014;59:1750–  
6  
7 60.  
8  
9  
10 46. Wang XD, Liu C, Chung J. Chronic alcohol intake reduces retinoic acid concentration and  
11  
12 enhances AP-1 (c-jun and c-fos) expression in rat liver. *Hepatology* 1998;28:744-750.  
13  
14  
15 47. Cortes E, Lachowski D, Rice A, Chronopoulos A, Robinson B, Thorpe S, et al. Retinoic acid  
16  
17 receptor- $\beta$  is downregulated in hepatocellular carcinoma and cirrhosis and its expression  
18  
19 inhibits myosin-driven activation and durotaxis in hepatic stellate cells. *Hepatology*  
20  
21 2019;69:785-802.  
22  
23  
24  
25 48. Muto Y, Moriwaki H, Saito A. Prevention of second primary tumors by an acyclic retinoid  
26  
27 in patients with hepatocellular carcinoma. *N Engl J Med* 1999;340:1046-7.  
28  
29  
30 49. Chen J, Zhuo JY, Yang F, Liu ZK, Zhou L, Xie HY, et al. 17-beta-hydroxysteroid  
31  
32 dehydrogenase 13 inhibits the progression and recurrence of hepatocellular carcinoma.  
33  
34 *Hepatobiliary Pancreat Dis Int* 2018;17:220-226.  
35  
36  
37 50. Rotroff DM, Pijut SS, Marvel SW, Jack JR, Havener TM, Pujol A, et al. Genetic variants in  
38  
39 *HSD17B3*, *SMAD3*, and *IPO11* impact circulating lipids in response to fenofibrate in  
40  
41 individuals with type 2 diabetes. *Clin Pharmacol Ther* 2018;103:712-721.  
42  
43  
44  
45  
46  
47  
48  
49  
50  
51  
52  
53  
54  
55  
56  
57  
58  
59  
60



Stickel *et al.*

Alcoholic cirrhosis, HCC, risk reduction and *HSD17B13*

## Legends to figures

### Figure 1

Forrest plot showing genotypic ORs for heterozygous and homozygous carriage of the *HSD17B13* rs72613567:TA allele. **Figure 1A: the unadjusted analysis; Figure 1B analysis adjusted for age, sex, body mass index (BMI), type 2 diabetes mellitus (T2DM) and country. Homozygous carriage of *HSD17B13* rs72613567:T wild type is set as a reference.**

### Figure 2

**A:** Relative proportions of patients with alcohol-related cirrhosis (CIRR) according to gene signature comprised of *HSD17B13* rs72613567 and *PNPLA3* rs739409 genotypes in relation to alcohol misusers without liver disease (ALC).

**B:** Relative proportions of patients with HCC according to gene signature comprised of *HSD17B13* rs72613567 and *PNPLA3* rs739409 genotypes in relation to patients with alcohol-related cirrhosis (CIRR).

**C:** Proportions of HCC patients according to gene signature comprised of *HSD17B13* rs72613567 and *PNPLA3* rs739409 genotypes in relation to alcohol misusers with no liver disease (ALC).

### Figure 3

**A:** Test for trend on the proportion of *HSD17B13* rs72613567 genotypes in the three cohorts showing a gradual decrease in TA allele carriage with escalating severity of liver disease.

**B:** Test for trend on the proportion of *HSD17B13* rs72613567 genotypes in women showing a decrease in TA carriage in patients with cirrhosis but not in patients with HCC.

**C:** Test for trend on the proportion of *HSD17B13* rs72613567 genotypes in men showing a gradual decrease of TA allele carriage with escalating severity of liver disease.

Stickel *et al.*Alcoholic cirrhosis, HCC, risk reduction and *HSD17B13***Supplementary Figure 1**

**A:** Forrest plot showing unadjusted allelic ORs for carriage of the *HSD17B13* rs72613567:TA allele for each geographical cohort comparing patients with alcohol-related cirrhosis with HCC (HCC) with patient with alcohol-related cirrhosis without HCC (CIRR).

**B:** Forrest plot showing unadjusted allelic ORs for carriage of the *HSD17B13* rs72613567:TA allele stratified for each geographical cohort comparing patients with alcohol-related cirrhosis (CIRR) with alcohol misusers with no liver disease (ALC).

**C:** Forrest plot showing unadjusted allelic ORs for carriage of the *HSD17B13* rs72613567:TA allele stratified for each geographical cohort comparing patients with alcohol-related cirrhosis and HCC (HCC) with alcohol misusers with no liver disease (ALC).

**Supplementary Figure 2**

**A:** Forrest plot showing unadjusted allelic ORs for carriage of the *PNPLA3* rs738409:G allele stratified for each geographical cohort comparing patients with alcohol-related cirrhosis with HCC (HCC) with patient with alcohol-related cirrhosis without HCC (CIRR).

**B:** Forrest plot showing unadjusted allelic ORs for carriage of the *PNPLA3* rs738409:G allele stratified for each geographical cohort comparing patients with alcohol-related cirrhosis (CIRR) with alcohol misusers with no liver disease (ALC).

**C:** Forrest plot showing unadjusted allelic ORs for carriage of the *PNPLA3* rs738409:G allele stratified for each geographical cohort comparing patients with alcohol-related cirrhosis and HCC (HCC) with alcohol misusers with no liver disease (ALC).

**Table 1:** Demographic characteristics of the study cohorts

Cohorts	Number	Age [SD]	Men (%)	BMI [SD]	T2DM	Nicotine (% users)
<b>Alcohol-related cirrhosis with HCC (HCC)</b>	<b>1031</b>	<b>62 [10]*</b>	<b>91*</b>	<b>27.8 [4.8] *</b>	<b>45%*</b>	<b>47%*</b>
Germany	778	61 [10]	91	27.8 [4.8]	45%	50%
Switzerland	115	61 [11]	85	27.9 [5.0]	53%	38%
United Kingdom <sup>♦</sup>	65	65 [9]	93	25.6 [3.1]	0%	N/A
Italy	73	72 [8]	92	N/A	47%	<b>29%</b>
<b>Alcohol-related cirrhosis without HCC (CIRR)</b>	<b>1653</b>	<b>55 [10]<sup>†</sup></b>	<b>72<sup>†</sup></b>	<b>25.9 [4.9]<sup>†</sup></b>	<b>16%<sup>†</sup></b>	<b>61%<sup>†</sup></b>
Germany	1050	56 [10]	72	26.2 [5.2]	22%	61%
Switzerland	192	56 [10]	73	26.2 [5.8]	29%	48%
United Kingdom*	376	53 [11]	68	24.6 [2.6]	N/A	N/A
Italy	35	54 [9]	86	N/A	24%	<b>66%</b>
<b>Alcohol misusers (ALC)</b>	<b>2588</b>	<b>48 [10]</b>	<b>84</b>	<b>24.7 [4.1]</b>	<b>4%</b>	<b>79%</b>
Germany	1827	48 [9]	88	24.8 [4.3]	4%	81%
Switzerland	417	45 [12]	74	24.4 [4.0]	14%	59%
United Kingdom	344	49 [10]	76	24.7 [2.3]	2%	N/A
Italy	N/A	N/A	N/A	N/A	N/A	N/A

BMI, body mass index; T2DM, type II diabetes mellitus; N/A, not available;

<sup>♦</sup> People with a BMI > 30 and/or with type II diabetes were excluded *a priori*;

Significance of the difference between patients with alcohol-related cirrhosis with and without HCC: \*p < 0.001;

Significance of the difference between patients with alcohol-related cirrhosis and alcohol misusers: <sup>†</sup>p < 0.001

**Table 2:** Univariate and multivariate analyses for association of *HSD17B13* rs72613567 with alcohol-related cirrhosis and HCC in the total European cohort

Cohorts	<i>HSD17B13</i> (rs72613567)	Comparative groups		Genotypic OR (95% CI) regression model: A	Genotypic OR (95% CI) regression model: B	Regression model	Allelic OR (95% CI)	Significance (P)	Cases/controls (n)
		HCC	CIRR						
Alcoholic-related cirrhosis and HCC (HCC)	T T	705	1027						
	T TA	287	524	0.80 (0.67-0.95)	0.92 (0.69-1.22)	A	0.77 (0.68-0.89)	2.27×10 <sup>-4</sup>	1031/1653
	TA TA	39	102	0.56 (0.38-0.82)	0.43 (0.23-0.80)	B	0.79 (0.63-0.99)	0.037	604/679
	MAF	0.177	0.220	P = 1.05×10 <sup>-3</sup>	P = 0.028				
Alcohol-related cirrhosis without HCC (CIRR)		<b>CIRR</b>	<b>ALC</b>						
	T T	1027	1401						
	T TA	524	1009	0.71 (0.62-0.81)	0.79 (0.63-0.98)	A	0.79 (0.72-0.88)	8.13×10 <sup>-6</sup>	1653/2588
	TA TA	102	178	0.78 (0.61-1.01)	0.82 (0.54-1.23)	B	0.85 (0.72-0.99)	0.048	679/1483
MAF	0.220	0.264	P = 1.54×10 <sup>-6</sup>	P = 0.085					
Alcohol misusers (ALC)		<b>HCC</b>	<b>ALC</b>						
	T T	705	1401						
	T TA	287	1009	0.57 (0.48-0.66)	0.68 (0.52-0.89)	A	0.60 (0.53-0.69)	1.69×10 <sup>-14</sup>	1031/2588
	TA TA	39	178	0.44 (0.30-0.62)	0.39 (0.21-0.72)	B	0.66 (0.53-0.81)	1.14×10 <sup>-4</sup>	604/1483
MAF	0.177	0.264	P = 3.32×10 <sup>-14</sup>	P = 6.00×10 <sup>-4</sup>					

CI, confidence intervals; MAF, minor allele frequency; OR, odds ratio  
 Genotypic and allelic odds ratios were assessed by logistic regression models: model A - univariate logistic regression; model B –multivariate logistic regression adjusted for age, sex, body mass index, type 2 diabetes mellitus and country.

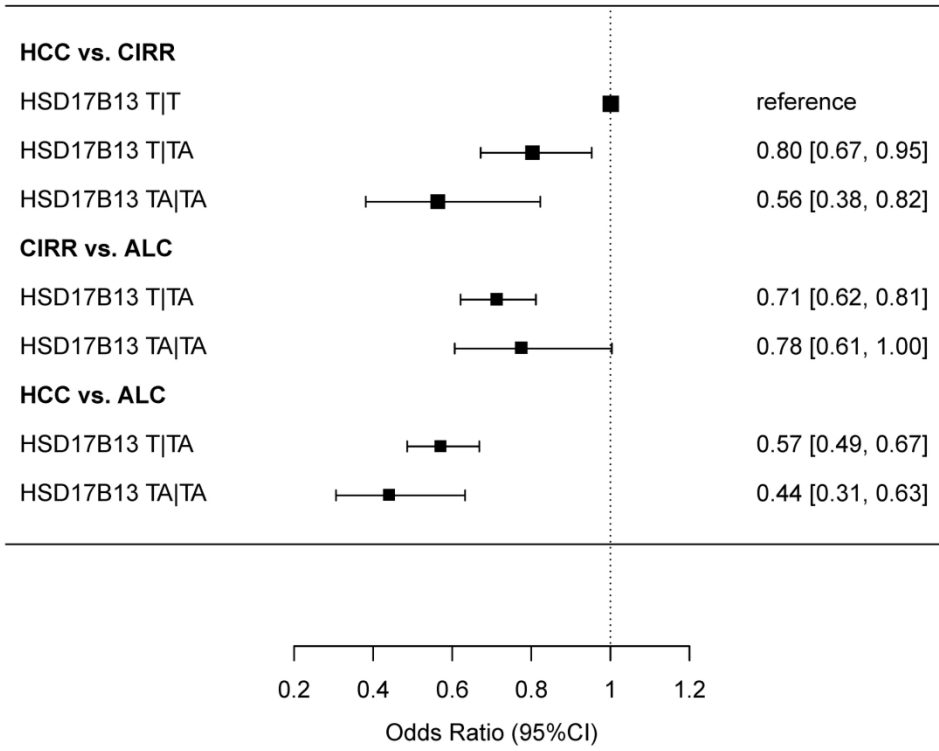
**Table 3:** Univariate and multivariate analyses for association of *PNPLA3* rs738409 with alcohol-related cirrhosis and HCC in the total European cohort

Cohorts	<i>PNPLA3</i> (rs738409)	Comparative groups		Genotypic OR (95% CI) regression model: A	Genotypic OR (95% CI) regression model: B	Regression model	Allelic OR (95% CI)	Significance (P)	Cases/controls (n)
		HCC	CIRR						
Alcohol-related cirrhosis with HCC (HCC)									
	C C	269	697						
	C G	497	714	1.80 (1.50-2.16)	1.75 (1.30-2.36)	A	1.77 (1.58-1.98)	2.31×10 <sup>-23</sup>	1030/1631
	G G	264	220	3.11 (2.48-3.90)	2.75 (1.88-4.01)	B	1.67 (1.39-2.01)	7.19×10 <sup>-8</sup>	603/660
	MAF	0.498	0.354	P = 2.98×10 <sup>-22</sup>	P = 4.37×10 <sup>-7</sup>				
Alcohol-related cirrhosis without HCC (CIRR)									
		<b>CIRR</b>	<b>ALC</b>						
	C C	697	1364						
	C G	714	802	1.74 (1.52-2.00)	1.64 (1.31-2.06)	A	1.70 (1.54-1.88)	1.52×10 <sup>-26</sup>	1631/2319
	G G	220	153	2.81 (2.25-3.53)	2.65 (1.85-3.78)	B	1.63 (1.39-1.91)	1.67×10 <sup>-9</sup>	660/1469
	MAF	0.354	0.239	P = 1.61×10 <sup>-25</sup>	P = 1.31×10 <sup>-8</sup>				
Alcohol misuse (ALC)									
		<b>HCC</b>	<b>ALC</b>						
	C C	269	1364						
	C G	497	802	3.14 (2.65-3.73)	2.75 (2.06-3.66)	A	3.00 (2.67-3.36)	2.17×10 <sup>-79</sup>	1030/2319
	G G	264	153	8.75 (6.90-11.10)	6.76 (4.60-9.95)	B	2.63 (2.18-3.17)	3.89×10 <sup>-24</sup>	603/1469
	MAF	0.498	0.239	P = 4.14×10 <sup>-78</sup>	P = 5.50×10 <sup>-23</sup>				

CI, confidence intervals; MAF, minor allele frequency; OR, odds ratio

Genotypic and allelic odds ratios were assessed by logistic regression models: model A - univariate logistic regression; model B –multivariate logistic regression adjusted for age, sex, body mass index, type 2 diabetes mellitus and country

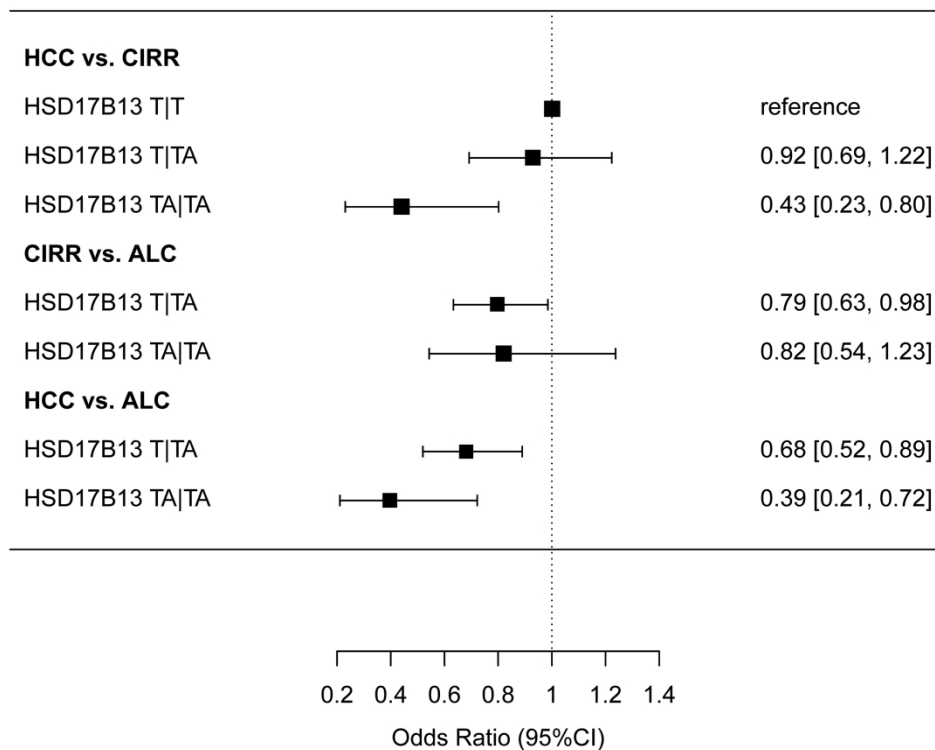
1  
2  
3  
4  
5  
6  
7  
8  
9  
10  
11  
12  
13  
14  
15  
16  
17  
18  
19  
20  
21  
22  
23  
24  
25  
26  
27  
28  
29  
30  
31  
32  
33  
34  
35  
36  
37  
38  
39  
40  
41  
42  
43  
44  
45  
46  
47  
48  
49  
50  
51  
52  
53  
54  
55  
56  
57  
58  
59  
60



Forrest plot showing genotypic ORs for heterozygous and homozygous carriage of the HSD17B13 rs72613567:TA allele. Figure 1A: the unadjusted Analysis.

177x177mm (300 x 300 DPI)

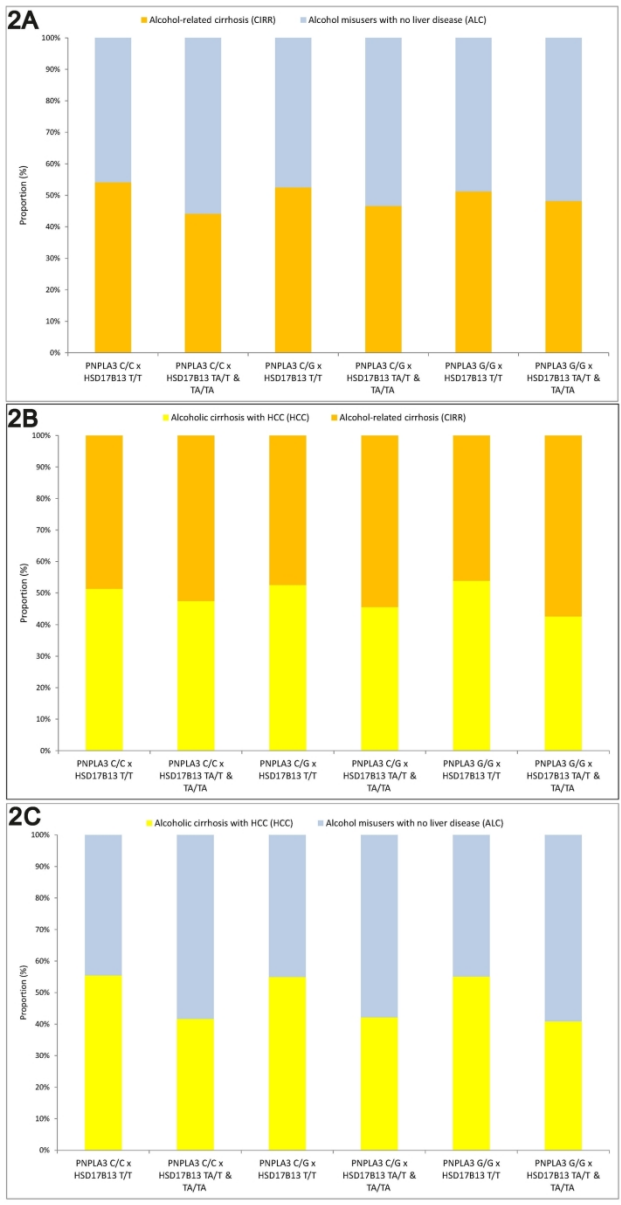
1  
2  
3  
4  
5  
6  
7  
8  
9  
10  
11  
12  
13  
14  
15  
16  
17  
18  
19  
20  
21  
22  
23  
24  
25  
26  
27  
28  
29  
30  
31  
32  
33  
34  
35  
36  
37  
38  
39  
40  
41  
42  
43  
44  
45  
46  
47  
48  
49  
50  
51  
52  
53  
54  
55  
56  
57  
58  
59  
60



Forrest plot showing genotypic ORs for heterozygous and homozygous carriage of the HSD17B13 rs72613567:TA allele. Figure 1B analysis adjusted for age, sex, body mass index (BMI), type 2 diabetes mellitus (T2DM) and country. Homozygous carriage of HSD17B13 rs72613567:T wild type is set as a reference

133x133mm (600 x 600 DPI)

1  
2  
3  
4  
5  
6  
7  
8  
9  
10  
11  
12  
13  
14  
15  
16  
17  
18  
19  
20  
21  
22  
23  
24  
25  
26  
27  
28  
29  
30  
31  
32  
33  
34  
35  
36  
37  
38  
39  
40  
41  
42  
43  
44  
45  
46  
47  
48  
49  
50  
51  
52  
53  
54  
55  
56  
57  
58  
59  
60



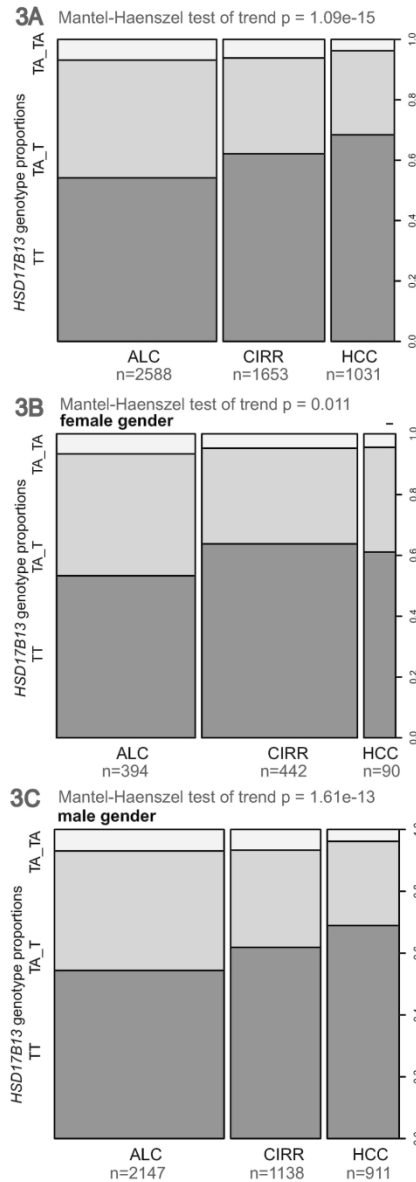
A: Relative proportions of patients with alcohol-related cirrhosis (CIRR) according to gene signature comprised of HSD17B13 rs72613567 and PNPLA3 rs739409 genotypes in relation to alcohol misusers without liver disease (ALC).

B: Relative proportions of patients with HCC according to gene signature comprised of HSD17B13 rs72613567 and PNPLA3 rs739409 genotypes in relation to patients with alcohol-related cirrhosis (CIRR).

C: Proportions of HCC patients according to gene signature comprised of HSD17B13 rs72613567 and PNPLA3 rs739409 genotypes in relation to alcohol misusers with no liver disease (ALC).

129x227mm (300 x 300 DPI)





- A: Test for trend on the proportion of HSD17B13 rs72613567 genotypes in the three cohorts showing a gradual decrease in TA allele carriage with escalating severity of liver disease.
- B: Test for trend on the proportion of HSD17B13 rs72613567 genotypes in women showing a decrease in TA carriage in patients with cirrhosis but not in patients with HCC.
- C: Test for trend on the proportion of HSD17B13 rs72613567 genotypes in men showing a gradual decrease of TA allele carriage with escalating severity of liver disease.

129x227mm (300 x 300 DPI)

**Supplementary Table 1:** Laboratory tests variables in the study cohorts at the time of enrollment

Cohorts	Number	Serum GGT (U/l)	Serum AST (U/l)	Serum ALT (U/l)	Platelet count (x 10 <sup>3</sup> /μl)
<b>Alcohol-related cirrhosis with HCC (HCC)</b>	<b>1031</b>	<b>164 (85-318)</b>	<b>56 (37-107)</b>	<b>34 (22-55)</b>	<b>130 (86-174)</b>
Germany	778	169 (90-339)	56 (37-111)	35 (22-56)	130 (86-177)
Switzerland	115	91 (78-163)	48 (31-85)	26 (20-39)	127 (91-159)
United Kingdom	65	129 (79-303)	72 (43-86)	35 (25-60)	N/A
Italy	73	N/A	N/A	N/A	N/A
<b>Alcohol-related cirrhosis without HCC (CIRR)</b>	<b>1653</b>	<b>129 (64-276)</b>	<b>47 (31-77)</b>	<b>28 (18-45)</b>	<b>126 (86-187)</b>
Germany	1050	114 (59-225)	44 (29-69)	25 (16-39)	125 (86-188)
Switzerland	192	165 (83-479)	64 (36-109)	37 (22-55)	132 (91-182)
United Kingdom	376	176 (63-415)	50 (33-90)	33 (22-53)	N/A
Italy	35	N/A	N/A	N/A	N/A
<b>Alcohol misusers (ALC)</b>	<b>2588</b>	<b>76 (34-197)</b>	<b>31 (18-62)</b>	<b>32 (19-57)</b>	<b>224 (171-282)</b>
Germany	1827	70 (32-191)	29 (16-60)	30 (19-56)	271 (241-335)
Switzerland	417	78 (35-197)	34 (20-69)	31 (17-58)	221 (171-280)
United Kingdom	344	104 (43-224)	34 (24-57)	38 (22-57)	N/A
Italy	N/A	N/A	N/A	N/A	N/A

Values are reported as median with interquartile range. GGT, gamma-glutamyl transpeptidase; AST, aspartate aminotransferase; ALT, alanine aminotransferase;

**Supplementary Table 2:** Genotype counts and allelic frequencies of the *HSD17B13* and *PNPLA3* loci

Cohorts	<i>HSD17B13</i> (rs72613567)					<i>PNPLA3</i> (rs738409)				
	Number	T T	T TA	TA TA	MAF	Number	C C	C G	G G	MAF
<b>Alcohol-related cirrhosis with HCC (HCC)</b>	<b>1031</b>	<b>705</b>	<b>287</b>	<b>39</b>	<b>0.177</b>	<b>1030</b>	<b>269</b>	<b>497</b>	<b>264</b>	<b>0.498</b>
Germany	778	510	240	28	0.190	779	193	382	204	0.507
Switzerland	115	83	28	4	0.157	114	35	53	26	0.461
United Kingdom	65	54	8	3	0.108	63	28	21	14	0.389
Italy	73	58	11	4	0.130	74	13	41	20	0.547
<b>Alcohol-related cirrhosis without HCC (CIRR)</b>	<b>1653</b>	<b>1027</b>	<b>524</b>	<b>102</b>	<b>0.220</b>	<b>1631</b>	<b>697</b>	<b>714</b>	<b>220</b>	<b>0.354</b>
Germany	1050	655	330	65	0.219	1044	397	482	165	0.389
Switzerland	192	126	55	11	0.201	191	79	89	23	0.353
United Kingdom	376	224	126	26	0.237	361	208	128	25	0.247
Italy	35	22	13	0	0.186	35	13	15	7	0.414
<b>Alcohol misusers (ALC)</b>	<b>2588</b>	<b>1401</b>	<b>1009</b>	<b>178</b>	<b>0.264</b>	<b>2319</b>	<b>1364</b>	<b>802</b>	<b>153</b>	<b>0.239</b>
Germany	1827	974	721	132	0.270	1551	860	569	122	0.262
Switzerland	417	244	150	23	0.235	418	242	149	27	0.243
United Kingdom	344	183	138	23	0.267	350	262	84	4	0.131
Italy	N/A									
<b>Healthy controls (HC)</b>	<b>1196</b>	<b>627</b>	<b>479</b>	<b>90</b>	<b>0.276*</b>	<b>1196</b>	<b>720</b>	<b>417</b>	<b>59</b>	<b>0.224†</b>
United Kingdom	899	466	359	74	0.282	899	544	313	42	0.221
EUR 1000 Genomes (CEU, GBR, TSI)♦	297	161	120	16	0.256	297	176	104	17	0.232

MAF, minor allele frequency; N/A, not available

♦CEU: Utah residents with Northern and Western European ancestry; GBR: British in England and Scotland; TSI: Toskani in Italy<sup>28</sup>

\* Significance of the difference in MAF for *HSD17B13* rs72613567 between ALC and HC:  $P_{\text{genotypic}} = 0.600$

† Significance of the difference in MAF for *PNPLA3* rs738409 between ALC and HC:  $P_{\text{genotypic}} = 0.166$

**Supplementary Table 3:** Meta-analyses of the univariate analyses of the *HSD17B13* locus for association with alcohol-related cirrhosis and HCC in individual European cohorts

<i>HSD17B13</i> (rs72613567)		Univariate – all		Univariate – men		Univariate – women	
Alcohol-related cirrhosis with HCC (HCC)	vs CIRR	Allelic OR (95% CI)	Significance (P)	Allelic OR (95% CI)	Significance (P)	Allelic OR (95% CI)	Significance (P)
Fixed effect meta-analysis		<b>0.79 (0.68-0.91)</b>	<b>8.47×10<sup>-4</sup></b>	<b>0.76 (0.65-0.90)</b>	<b>8.94×10<sup>-4</sup></b>	<b>1.21 (0.80-1.81)</b>	<b>0.366</b>
		<b>Heterogeneity</b>	<b>0.083</b>	<b>Heterogeneity</b>	<b>0.116</b>	<b>Heterogeneity</b>	<b>0.354</b>
	Germany	0.84 (0.72-0.99)	0.038	0.80 (0.67-0.96)	0.014	1.17 (0.75-1.83)	0.481
	Switzerland	0.76 (0.50-1.15)	0.196	0.75 (0.48-1.17)	0.201	0.78 (0.22-2.76)	0.704
	United Kingdom	0.39 (0.22-0.69)	0.001	0.30 (0.14-0.66)	0.003	3.24 (0.70-14.9)	0.133
	Italy	0.66 (0.30-1.42)	0.282	0.85 (0.39-1.84)	0.676	low n	
Alcohol-related cirrhosis without HCC (CIRR)	vs ALC						
Fixed effect meta-analysis		<b>0.79 (0.71-0.88)</b>	<b>6.75×10<sup>-6</sup></b>	<b>0.82 (0.73-0.92)</b>	<b>8.35×10<sup>-4</sup></b>	<b>0.70 (0.56-0.89)</b>	<b>2.78×10<sup>-3</sup></b>
		<b>Heterogeneity</b>	<b>0.749</b>	<b>Heterogeneity</b>	<b>0.627</b>	<b>Heterogeneity</b>	<b>0.958</b>
	Germany	0.77 (0.68-0.87)	2.89×10 <sup>-5</sup>	0.79 (0.69-0.91)	0.001	0.72 (0.54-0.97)	0.031
	Switzerland	0.82 (0.61-1.10)	0.188	0.88 (0.63-1.24)	0.471	0.66 (0.36-1.21)	0.179
	United Kingdom	0.85 (0.67-1.08)	0.179	0.91 (0.68-1.22)	0.511	0.68 (0.41-1.09)	0.110
Alcohol-related cirrhosis with HCC (HCC)	vs ALC						
Fixed effect meta-analysis		<b>0.61 (0.54-0.70)</b>	<b>1.35×10<sup>-12</sup></b>	<b>0.61 (0.52-0.70)</b>	<b>2.11×10<sup>-11</sup></b>	<b>0.85 (0.56-1.28)</b>	<b>0.433</b>
		<b>Heterogeneity</b>	<b>0.097</b>	<b>Heterogeneity</b>	<b>0.094</b>	<b>Heterogeneity</b>	<b>0.284</b>
	Germany	0.64 (0.55-0.74)	1.70×10 <sup>-9</sup>	0.62 (0.53-0.73)	2.36×10 <sup>-9</sup>	0.84 (0.54-1.32)	0.448
	Switzerland	0.61 (0.41-0.90)	0.012	0.65 (0.43-0.98)	0.040	0.48 (0.13-1.75)	0.263
	United Kingdom	0.33 (0.19-0.59)	9.62×10 <sup>-5</sup>	0.25 (0.11-0.56)	0.001	2.79 (0.50-15.6)	0.243

ALC, alcohol misusers; CI, confidence intervals; OR, odds ratio.

Allelic odds ratios were assessed by univariate logistic regression.

**Supplementary Table 4:** Meta-analyses of the univariate analyses of the *PNPLA3* locus for association with alcohol-related cirrhosis and HCC in individual European cohorts

<i>PNPLA3</i> (rs738409)		Univariate – all		Univariate – men		Univariate – women	
		Allelic OR (95% CI)	Significance (P)	Allelic OR (95% CI)	Significance (P)	Allelic OR (95% CI)	Significance (P)
<b>Alcoholic-related cirrhosis with HCC (HCC)</b>	<b>vs CIRR</b>	<b>1.64 (1.46-1.84)</b>	<b>5.99×10<sup>-17</sup></b>	<b>1.62 (1.42-1.84)</b>	<b>2.51×10<sup>-13</sup></b>	<b>1.58 (1.13-2.21)</b>	<b>0.007</b>
	<b>Fixed effect meta-analysis</b>	<b>Heterogeneity</b>	<b>0.476</b>	<b>Heterogeneity</b>	<b>0.971</b>	<b>Heterogeneity</b>	<b>0.480</b>
	Germany	1.60 (1.40-1.83)	4.63×10 <sup>-12</sup>	1.62 (1.40-1.88)	1.97×10 <sup>-10</sup>	1.60 (1.10-2.30)	0.013
	Switzerland	1.55 (1.11-2.17)	0.01	1.65 (1.13-2.39)	0.009	1.13 (0.45-2.80)	0.798
	United Kingdom	2.24 (1.49-3.35)	7.61×10 <sup>-5</sup>	1.48 (0.91-2.39)	0.113	3.47 (0.71-16.9)	0.123
	Italy	1.67 (0.94-2.98)	0.080	1.79 (0.95-3.37)	0.070	low n	
<b>Alcohol-related cirrhosis without HCC (CIRR)</b>	<b>vs ALC</b>						
	<b>Fixed effect meta-analysis</b>	<b>1.79 (1.62-1.98)</b>	<b>1.29×10<sup>-29</sup></b>	<b>1.74 (1.55-1.95)</b>	<b>9.52×10<sup>-21</sup></b>	<b>1.87 (1.48-2.37)</b>	<b>2.14×10<sup>-7</sup></b>
		<b>Heterogeneity</b>	<b>0.419</b>	<b>Heterogeneity</b>	<b>0.771</b>	<b>Heterogeneity</b>	<b>0.876</b>
	Germany	1.75 (1.56-1.97)	2.03×10 <sup>-20</sup>	1.74 (1.52-1.99)	9.63×10 <sup>-16</sup>	1.79 (1.34-2.40)	8.35×10 <sup>-5</sup>
	Switzerland	1.69 (1.30-2.21)	9.61×10 <sup>-5</sup>	1.60 (1.18-2.17)	2.28×10 <sup>-3</sup>	1.99 (1.16-3.43)	0.012
	United Kingdom	2.12 (1.61-2.80)	7.38×10 <sup>-8</sup>	1.89 (1.35-2.65)	2.12×10 <sup>-4</sup>	2.09 (1.14-3.85)	0.018
<b>Alcoholic-related cirrhosis with HCC (HCC)</b>	<b>vs ALC</b>						
	<b>Fixed effect meta-analysis</b>	<b>2.86 (2.54-3.22)</b>	<b>9.60×10<sup>-69</sup></b>	<b>2.74 (2.41-3.11)</b>	<b>5.19×10<sup>-55</sup></b>	<b>2.98 (2.02-4.40)</b>	<b>4.27×10<sup>-8</sup></b>
		<b>Heterogeneity</b>	<b>0.0502</b>	<b>Heterogeneity</b>	<b>0.788</b>	<b>Heterogeneity</b>	<b>0.423</b>
	Germany	2.78 (2.43-3.17)	8.34×10 <sup>-52</sup>	2.78 (2.41-3.20)	6.21×10 <sup>-46</sup>	2.93 (1.90-4.51)	1.05×10 <sup>-6</sup>
	Switzerland	2.56 (1.87-3.48)	2.98×10 <sup>-9</sup>	2.47 (1.78-3.44)	7.36×10 <sup>-8</sup>	2.45 (0.90-6.64)	0.079
	United Kingdom	4.74 (3.09-7.28)	3.92×10 <sup>-14</sup>	2.92 (1.72-4.96)	7.54×10 <sup>-5</sup>	12.4 (1.33-115.4)	0.027

ALC, alcohol misusers; CI, confidence intervals; OR, odds ratio.

Allelic odds ratios were assessed by univariate logistic regression.

**Supplementary Table 5:** Interaction analysis of *PNPLA3* rs738409 and *HSD17B13* rs72613567 for risk association with alcohol-related cirrhosis (CIRR vs. ALC) in the total European cohort.

	Genes	Additive model		Genes	Additive model	
		P value	OR (95% CI)		P value	OR (95% CI)
Regression model A - without interaction term				Regression model A - with interaction term		
Main effect	<i>HSD17B13</i>	5.05×10 <sup>-5</sup>	0.80 (0.72-0.89)	<i>HSD17B13</i>	4.15×10 <sup>-5</sup>	0.74 (0.64-0.85)
Main effect	<i>PNPLA3</i>	2.97×10 <sup>-26</sup>	1.70 (1.54-1.87)	<i>PNPLA3</i>	1.77×10 <sup>-13</sup>	1.59 (1.41-1.80)
<b>Interaction term</b>	<b>N/A</b>			<b><i>HSD17B13</i>×<i>PNPLA3</i></b>	<b>0.087</b>	<b>1.15 (0.980-1.35)</b>
	Genes	Genotypic model		Genes	Genotypic model	
		P value	OR (95% CI)		P value	OR (95% CI)
Regression model A - without interaction term				Regression model A - with interaction term		
Main effect term	<i>HSD17B1</i>	2.81×10 <sup>-5</sup>		<i>HSD17B1</i>	1.61×10 <sup>-4</sup>	
	<i>HSD17B13</i> (T/TA)	8.26×10 <sup>-6</sup>	0.67 (0.55-0.82)	<i>HSD17B13</i> (T/TA)	8.15×10 <sup>-5</sup>	0.67 (0.55-0.82)
	<i>HSD17B13</i> (TA/TA)	0.06	0.66 (0.44-0.98)	<i>HSD17B13</i> (TA/TA)	0.038	0.66 (0.44-0.98)
Main effect term	<i>PNPLA3</i>	4.75×10 <sup>-25</sup>		<i>PNPLA3</i>	4.76×10 <sup>-12</sup>	
	<i>PNPLA3</i> (C/G)	2.04×10 <sup>-15</sup>	1.74 (1.52-1.99)	<i>PNPLA3</i> (C/G)	7.86×10 <sup>-8</sup>	1.63 (1.36-1.94)
	<i>PNPLA3</i> (G/G)	5.91×10 <sup>-19</sup>	2.79 (2.22-3.50)	<i>PNPLA3</i> (G/G)	1.15×10 <sup>-9</sup>	2.49 (1.86-3.35)
<b>Interaction term</b>	<b>N/A</b>			<b><i>HSD17B13</i>×<i>PNPLA3</i></b>	<b>0.598</b>	
Genotype interaction				<i>HSD17B13</i> (T/TA) by <i>PNPLA3</i> (C/G)	0.313	1.16 (0.87-1.56)
Genotype interaction				<i>HSD17B13</i> (T/TA) by <i>PNPLA3</i> (G/G)	0.397	1.23 (0.76-2.01)
Genotype interaction				<i>HSD17B13</i> (TA/TA) by <i>PNPLA3</i> (C/G)	0.415	1.27 (0.72-2.25)
Genotype interaction				<i>HSD17B13</i> (TA/TA) by <i>PNPLA3</i> (G/G)	0.199	1.82 (0.73-4.51)

OR, odds ratio. *P* values, genotypic and allelic odds ratios were assessed by logistic regression models: model A - univariate logistic regression.

**Supplementary Table 6:** Interaction analysis of *PNPLA3* rs738409 and *HSD17B13* rs72613567 for risk association with alcohol-related HCC (HCC vs. CIRR) in the male European cohort.

	Genes	Additive model		Genes	Additive model		
		P value	OR (95% CI)		P value	OR (95% CI)	
Regression model A - without interaction term				Regression model A - with interaction term			
Main effect	<i>HSD17B13</i>	1.98×10 <sup>-4</sup>	0.75 (0.64-0.87)	<i>HSD17B13</i>	0.171	0.84 (0.66-1.08)	
Main effect	<i>PNPLA3</i>	1.84×10 <sup>-18</sup>	1.77 (1.56-2.01)	<i>PNPLA3</i>	1.74×10 <sup>-15</sup>	1.87 (1.64-2.16)	
<b>Interaction term</b>	<b>N/A</b>			<b><i>HSD17B13</i>×<i>PNPLA3</i></b>	<b>0.204</b>	<b>0.87 (0.70-1.08)</b>	
		<b>Genotypic model</b>				<b>Genotypic model</b>	
Regression model A - without interaction term		<b>P value</b>	<b>OR (95% CI)</b>	Regression model A with interaction term		<b>P value</b>	<b>OR (95% CI)</b>
Main effect term	<i>HSD17B1</i>	0.001		<i>HSD17B1</i>	0.374		
	<i>HSD17B13</i> (T/TA)	0.013	0.78 (0.64-0.95)	<i>HSD17B13</i> (T/TA)	0.327	0.84 (0.53-1.58)	
	<i>HSD17B13</i> (TA/TA)	0.002	0.51 (0.33-0.77)	<i>HSD17B13</i> (TA/TA)	0.258	0.65 (0.11-1.27)	
Main effect term	<i>PNPLA3</i>	1.80×10 <sup>-17</sup>		<i>PNPLA3</i>	1.72×10 <sup>-13</sup>		
	<i>PNPLA3</i> (C/G)	5.59×10 <sup>-9</sup>	1.83 (1.49-2.25)	<i>PNPLA3</i> (C/G)	5.70×10 <sup>-7</sup>	1.95 (1.32-2.89)	
	<i>PNPLA3</i> (G/G)	1.42×10 <sup>-17</sup>	3.09 (2.38-4.00)	<i>PNPLA3</i> (G/G)	8.85×10 <sup>-14</sup>	3.57 (2.11-6.03)	
<b>Interaction term</b>	<b>N/A</b>			<b><i>HSD17B13</i>×<i>PNPLA3</i></b>	<b>0.689</b>		
Genotype interaction				<i>HSD17B13</i> (T/TA) by <i>PNPLA3</i> (C/G)	0.680	0.91 (0.58-1.43)	
Genotype interaction				<i>HSD17B13</i> (T/TA) by <i>PNPLA3</i> (G/G)	0.581	0.85 (0.48-1.52)	
Genotype interaction				<i>HSD17B13</i> (TA/TA) by <i>PNPLA3</i> (C/G)	0.759	0.86 (0.33-2.24)	
Genotype interaction				<i>HSD17B13</i> (TA/TA) by <i>PNPLA3</i> (G/G)	0.167	0.43 (0.13-1.43)	

OR, odds ratio. *P* values, genotypic and allelic odds ratios were assessed by logistic regression models: model A - univariate logistic regression.

**Supplementary Table 6:** Univariate and multivariate analyses for association of *HSD17B13* rs72613567 with alcohol-related cirrhosis and HCC in the total European cohort by gender

Cohorts	Gender	HSD17B13 (rs72613567)	Comparative groups		Genotypic OR (95% CI) regression model: A	Genotypic OR (95% CI) regression model: B	Regression model	Allelic OR (95% CI)	P value	N cases / controls
			HCC	CIRR						
Alcoholic-related cirrhosis and HCC (HCC)	male	T T	628	704						
		T TA	248	358	0.78 (0.64-0.94)	0.85 (0.63-1.16)	A	0.75 (0.64-0.87)	1.72×10 <sup>-4</sup>	911/1138
		TA TA	35	76	0.52 (0.34-0.78)	0.37 (0.19-0.71)	B	0.73 (0.57-0.92)	8.44×10 <sup>-3</sup>	558/495
		MAF	0.175	0.224	<i>P</i> value =0.001	<i>P</i> value =0.009				
	female	T T	55	282						
		T TA	31	139	1.14 (0.70-1.86)	1.36 (0.64-2.90)	A	1.07 (0.73-1.58)	0.722	90/442
		TA TA	4	21	0.98 (0.32-2.96)	1.26 (0.18-8.78)	B	1.27 (0.67-2.39)	0.459	46/184
		MAF	0.217	0.205	<i>P</i> value =0.856	<i>P</i> value =0.719				
Alcohol-related cirrhosis without HCC (CIRR)	male		<b>CIRR</b>	<b>ALC</b>						
		T T	704	1168						
		T TA	358	830	0.72 (0.61-0.84)	0.79 (0.61-1.02)	A	0.82 (0.73-0.92)	0.001	1138/2147
		TA TA	76	149	0.85 (0.63-1.13)	0.90 (0.56-1.43)	B	0.87 (0.72-1.06)	0.170	495/1255
	MAF	0.224	0.263	<i>P</i> <sub>genotypic</sub> =1.27×10 <sup>-4</sup>	<i>P</i> value =0.204					
	female	T T	282	210						
		T TA	139	158	0.66 (0.49-0.88)	0.80 (0.51-1.25)	A	0.71 (0.57-0.89)	0.003	442/394
		TA TA	21	26	0.60 (0.33-1.10)	0.53 (0.21-1.34)	B	0.76 (0.54-1.08)	0.127	184/228
MAF		0.205	0.266	<i>P</i> value =0.009	<i>P</i> value =0.302					

ALC, Alcohol misuse; BMI, body mass index; CIRR, cirrhosis; OR, odds ratio; MAF minor allele frequency. *P* values, genotypic and allelic odds ratios were assessed by logistic regression models: model A - univariate logistic regression; model B – fully adjusted model: with adjustments for age, BMI, T2DM and cohort.

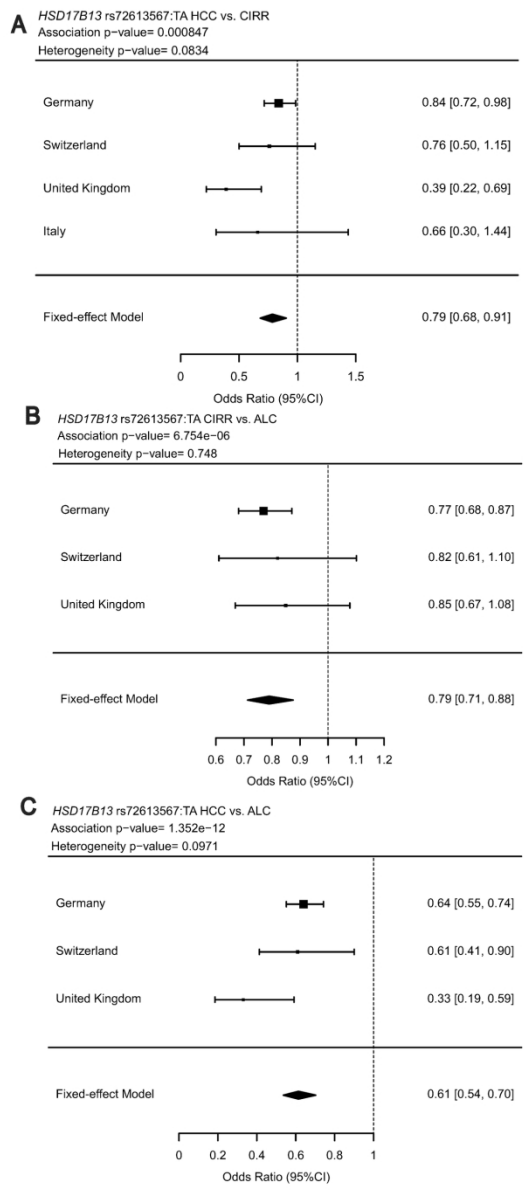


**Supplementary Table 8:** Univariate and multivariate analyses for association of *PNPLA3* rs738409 with alcohol-related cirrhosis and HCC in the total European cohort by gender

Cohorts	Gender	PNPLA3 (rs738409)	Comparative groups		Regression model	Allelic OR (95% CI)	P value	N cases / controls
			HCC	CIRR				
Alcoholic-related cirrhosis and HCC (HCC)	male		HCC	CIRR				
		C C	238	476	A	1.75 (1.55-1.99)	2.81×10 <sup>-18</sup>	910/1119
		C G	440	491	B	1.76 (1.44-2.16)	3.80×10 <sup>-8</sup>	557/479
		G G	232	152				
		MAF	0.497	0.355				
	female		HCC	CIRR				
		C C	23	190	A	1.75 (1.27-2.40)	0.001	90/439
		C G	44	186	B	1.14 (0.69-1.91)	0.606	46/181
		G G	23	63				
		MAF	0.500	0.355				
Alcohol-related cirrhosis without HCC (CIRR)	male		CIRR	ALC				
		C C	476	1120	A	1.69 (1.51-1.89)	8.50×10 <sup>-20</sup>	1119/1910
		C G	491	659	B	1.55 (1.29-1.87)	2.89×10 <sup>-6</sup>	479/1287
		G G	152	131				
		MAF	0.355	0.241				
	female		CIRR	ALC				
		C C	190	221	A	1.91 (1.53-2.39)	1.31×10 <sup>-8</sup>	439/363
		C G	186	125	B	1.80 (1.30-2.50)	4.39×10 <sup>-4</sup>	195/232
		G G	63	17				
		MAF	0.355	0.219				

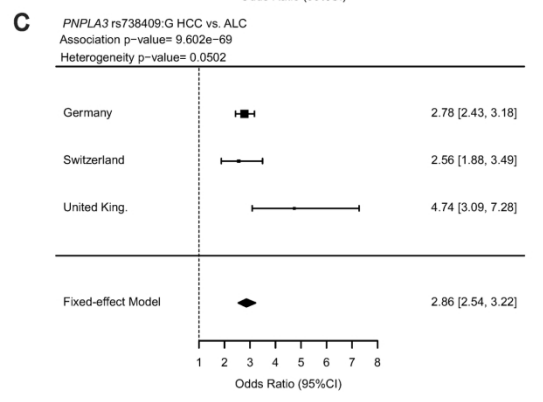
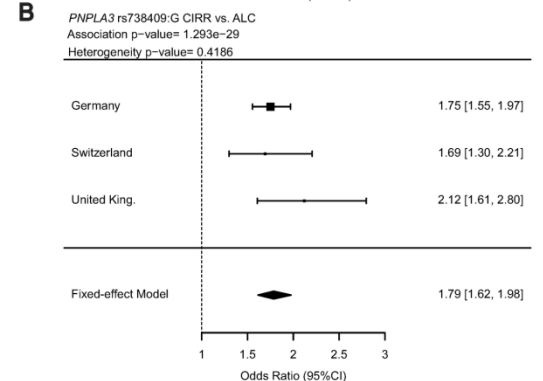
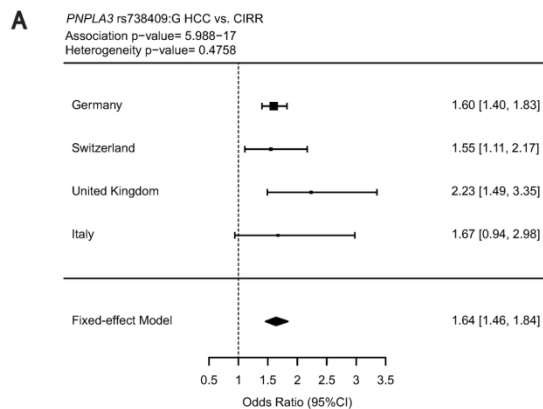
ALC, Alcohol misuse; BMI, body mass index; CIRR, cirrhosis; OR, odds ratio; MAF minor allele frequency. *P* values, genotypic and allelic odds ratios were assessed by logistic regression models: model A - univariate logistic regression; model B - with adjustments for age, country; model C – fully adjusted model: with adjustments for age, BMI, T2DM and country.

1  
2  
3  
4  
5  
6  
7  
8  
9  
10  
11  
12  
13  
14  
15  
16  
17  
18  
19  
20  
21  
22  
23  
24  
25  
26  
27  
28  
29  
30  
31  
32  
33  
34  
35  
36  
37  
38  
39  
40  
41  
42  
43  
44  
45  
46  
47  
48  
49  
50  
51  
52  
53  
54  
55  
56  
57  
58  
59  
60



129x227mm (300 x 300 DPI)

1  
2  
3  
4  
5  
6  
7  
8  
9  
10  
11  
12  
13  
14  
15  
16  
17  
18  
19  
20  
21  
22  
23  
24  
25  
26  
27  
28  
29  
30  
31  
32  
33  
34  
35  
36  
37  
38  
39  
40  
41  
42  
43  
44  
45  
46  
47  
48  
49  
50  
51  
52  
53  
54  
55  
56  
57  
58  
59  
60



129x227mm (300 x 300 DPI)