

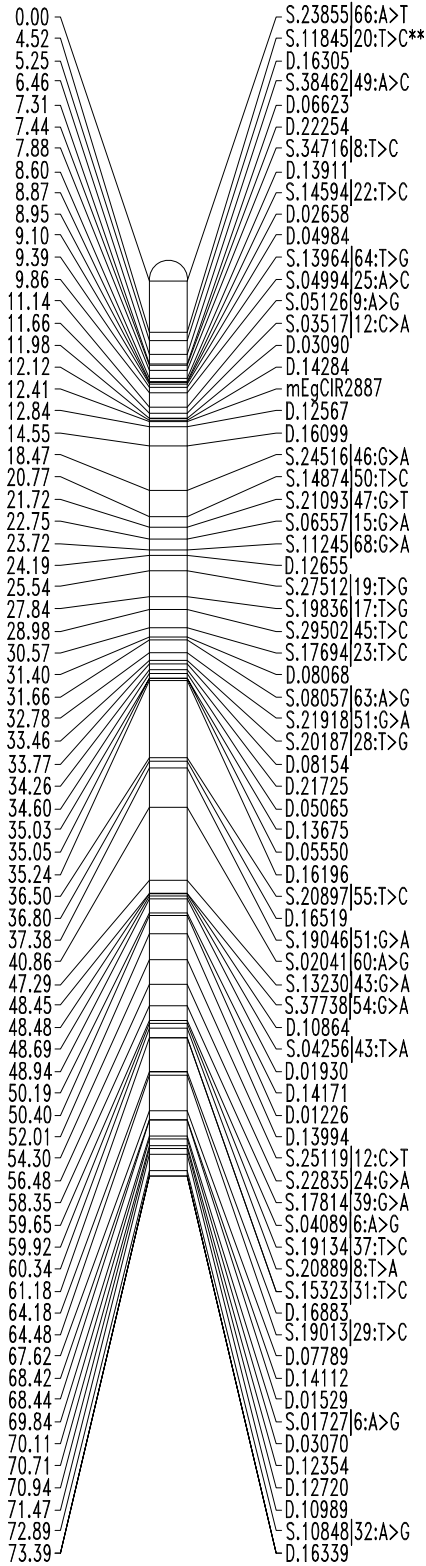
“High Density SNP and DArT-based Genetic Linkage Maps of Two Closely Related Oil Palm Populations”

Journal of Applied Genetics

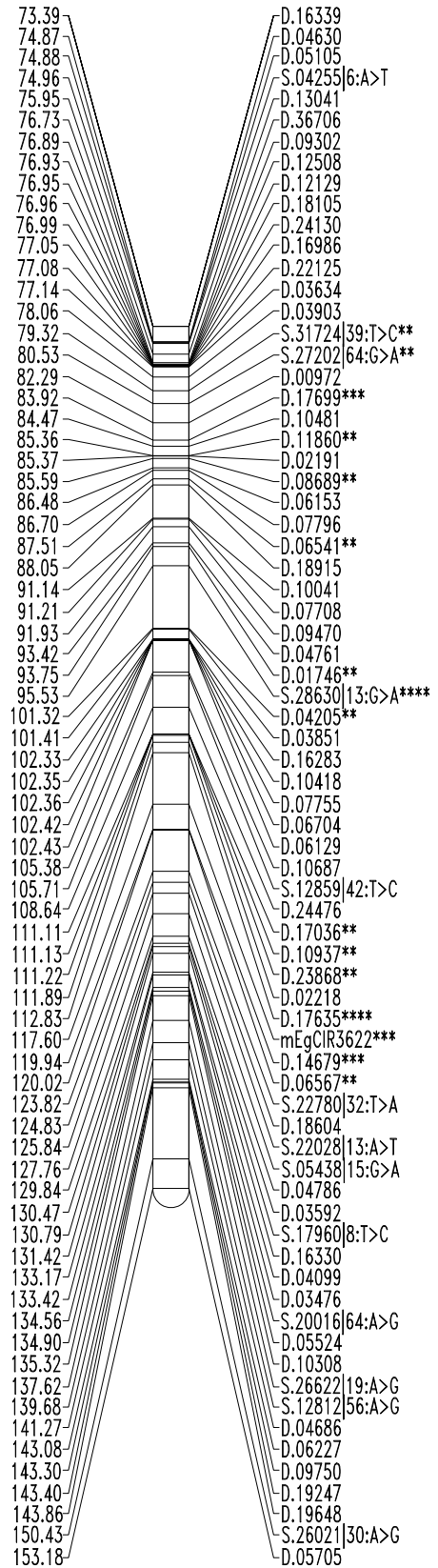
Siou Ting Gan, Wei Chee Wong, Choo Kien Wong, Aik Chin Soh, Andrzej Kilian, Eng-Ti Leslie Low, Festo Massawe and Sean Mayes

Corresponding author: Siou Ting Gan, Biotechnology Research Centre, Advanced Agriecological Research Sdn. Bhd., 43500 Semenyih, Selangor Darul Ehsan, Malaysia.  
Email address: [ganst@aarsb.com.my](mailto:ganst@aarsb.com.my)

# LG 1 (1)



# LG 1 (2)



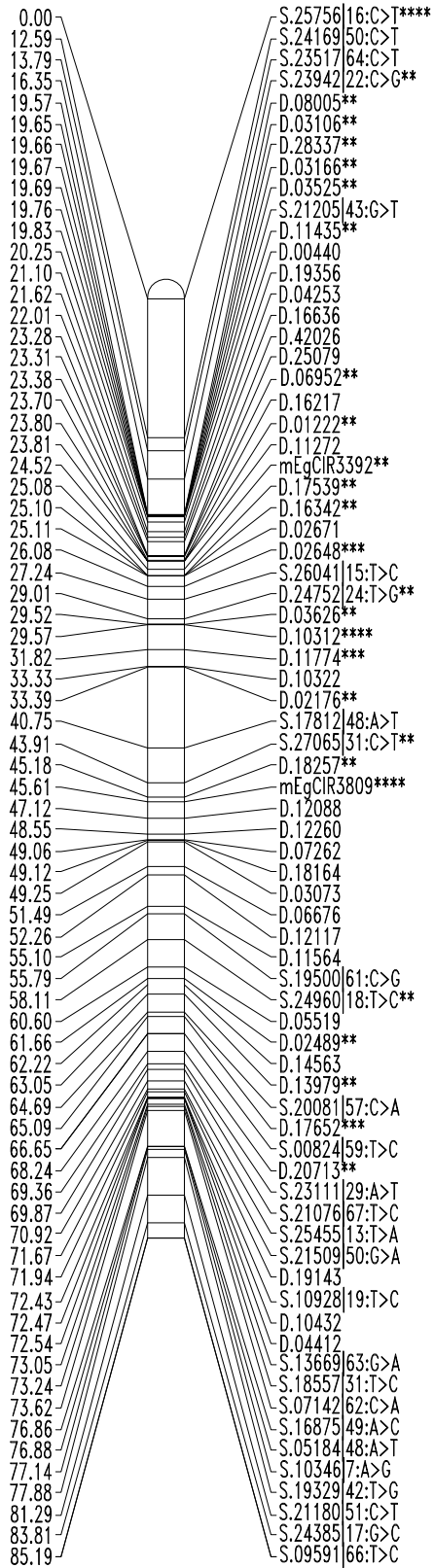
LG 2 (1)

0.00 S.25001|53:T>C  
 2.88 S.08677|64:A>G  
 3.25 S.06301|43:C>T  
 4.35 D.16025  
 4.39 D.02369  
 5.26 D.17430  
 6.47 D.03252  
 6.74 S.20683|53:C>T  
 7.85 D.01380  
 8.36 D.07554  
 8.43 D.06444  
 8.87 S.06735|57:G>A  
 9.25 S.22560|37:G>C  
 9.61 SH  
 10.49 S.18695|31:T>A  
 11.26 S.04059|60:C>T  
 12.31 D.03941  
 14.99 D.07313  
 18.19 S.18672|16:T>C  
 20.00 S.07830|65:G>A  
 21.12 D.02902  
 21.57 S.23082|46:T>C  
 22.87 S.05801|46:T>C  
 24.32 S.23961|37:T>C  
 25.36 S.04102|60:T>C  
 28.69 D.04891  
 29.02 D.06039  
 29.07 D.03616  
 29.11 D.01759  
 29.73 S.37363|46:A>G  
 32.19 S.09220|53:T>A  
 32.54 D.12453  
 33.58 D.12070  
 33.60 D.18343  
 33.73 D.13429  
 33.78 D.04100  
 34.20 S.05222|15:A>G  
 38.57 D.03234  
 38.87 S.15448|30:T>G  
 38.96 D.16796  
 40.48 D.00958  
 40.54 D.21912  
 40.62 D.07171  
 40.77 D.19563  
 41.34 S.15976|19:A>T  
 41.85 S.15357|20:C>T  
 42.20 S.13743|26:C>T  
 43.48 mEqClR3526  
 45.10 D.06865  
 45.12 D.03299  
 45.26 D.15497  
 45.54 D.17816  
 45.65 D.03339  
 45.69 D.20085  
 48.58 D.02443  
 50.65 S.27294|42:G>T  
 53.04 D.35465  
 53.44 D.09504  
 54.02 D.08043  
 55.59 D.07214  
 59.95 D.01225  
 60.20 D.16873\*\*  
 61.26 D.26924  
 61.31 D.36686  
 61.37 D.00854  
 61.63 D.14223  
 61.66 D.10067  
 63.43 D.01192  
 63.48 D.11584  
 65.72 D.15694  
 66.82 D.10431  
 67.15 D.01596  
 67.43 D.09240  
 68.14 D.12317  
 68.65 D.09866  
 70.00 D.18294  
 71.47 D.03497  
 71.68 D.14271  
 73.28 D.13505  
 74.84 S.24917|32:G>A  
 76.06 D.06478  
 77.67 D.17682  
 79.08 D.08767  
 79.13 D.01729  
 79.48 S.21204|23:G>A  
 80.60 D.02942  
 81.14 D.01713  
 81.20 D.11497  
 81.54 S.07674|50:T>C  
 82.10 S.18252|54:C>G  
 83.19 S.09116|27:C>A  
 86.56 D.02930  
 86.94 S.24598|62:G>A  
 87.98 S.09456|22:G>T  
 89.32 S.19691|40:A>T  
 89.38 D.15459  
 89.43 D.03568  
 89.53 D.12726  
 89.54 D.18936  
 89.87 S.17703|29:C>A  
 90.27 S.10488|20:T>C  
 90.35 D.05823  
 90.56 D.04921  
 92.30 S.23040|13:T>A  
 92.66 D.14396  
 92.87 D.13422  
 93.45 S.20396|19:T>C  
 94.13 S.21007|28:T>A

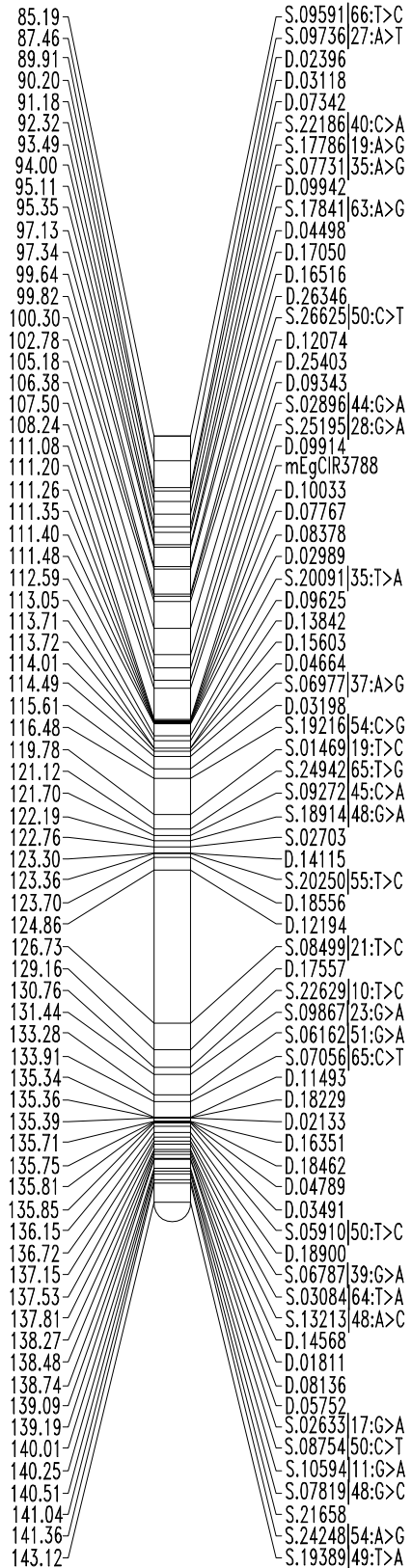
LG 2 (2)

94.13 S.21007|28:T>A  
 94.81 S.21681|20:A>G  
 95.19 S.24530|51:T>C  
 95.23 D.08974  
 96.16 S.20442|14:G>T  
 96.76 S.21852|19:C>T  
 97.67 S.19466|24:C>T  
 98.83 D.10469  
 99.75 S.28492|51:C>T  
 100.43 D.13853  
 100.82 D.03588  
 101.91 S.07919|65:G>T  
 102.69 S.16554|25:C>T  
 103.35 S.12273|40:G>A  
 103.78 D.07788  
 104.63 S.17817|22:T>A  
 105.54 S.19191|67:T>C  
 106.93 D.16391  
 107.36 S.23845|55:T>G  
 110.59 D.18530  
 111.08 D.00689  
 112.02 S.20800|6:T>G  
 113.37 D.11044\*\*  
 113.62 D.03555  
 115.65 S.15083|57:C>T  
 116.31 S.27060|49:C>G  
 117.12 S.19925|58:T>C  
 118.39 S.05650|59:A>G  
 119.40 S.22836|44:A>T  
 121.37 S.25512|48:G>A  
 122.12 D.01170  
 122.54 S.09120|66:A>G  
 123.39 D.04081  
 124.25 S.25616|11:T>C  
 126.01 D.31338  
 126.87 S.13484|18:A>G  
 127.19 D.09238  
 127.21 D.07099  
 129.20 S.21321|53:C>G  
 129.23 D.12251  
 130.08 S.19878|59:A>T  
 130.73 S.01465|36:C>T  
 132.55 S.14471|61:A>C  
 132.56 D.17892  
 132.98 S.15683|37:T>G  
 133.41 S.07945|6:A>G  
 134.17 D.12691  
 134.53 D.17057  
 134.67 D.16399  
 135.23 S.19396|24:C>T  
 135.63 S.16132|25:T>C  
 135.89 S.04979|35:T>C  
 136.65 S.08758|29:A>C  
 136.76 D.11298  
 137.24 D.08552  
 137.86 S.29094|30:C>T  
 138.40 D.01267  
 139.63 D.17410  
 140.24 D.17590  
 140.31 D.02196  
 141.50 S.09170|35:C>T  
 142.55 S.01908|67:A>C  
 143.21 S.15878|14:T>G  
 143.64 D.03547  
 143.85 D.17322  
 143.96 D.22192  
 144.18 D.06954  
 144.21 D.16038  
 144.47 S.12531|51:T>C  
 144.72 D.22493  
 144.95 D.16585  
 145.73 S.09697|54:A>G  
 146.19 S.13147|47:G>A  
 147.04 D.01243  
 147.60 S.20108|60:G>A  
 148.64 S.29311|32:A>G  
 150.25 S.15964|38:A>G  
 151.03 D.04652  
 151.45 D.03535  
 152.15 D.11232  
 152.88 D.30808  
 153.62 S.28364|42:G>A  
 153.82 S.07720|37:T>G  
 154.12 mEqClR3477  
 154.44 D.09878  
 155.19 S.24627|20:T>C  
 155.80 S.26844|12:T>A  
 156.60 S.08069|44:A>T  
 157.18 S.20651|47:T>C  
 158.69 D.19819  
 160.83 S.24639|61:G>C  
 161.60 S.16089|61:A>G  
 162.18 S.04762|43:C>T  
 162.87 D.01963  
 164.13 D.03544  
 166.00 D.17896  
 166.16 S.06832|43:T>A  
 166.32 D.24271  
 167.67 D.07692  
 168.51 S.21065|66:G>A\*\*  
 171.58 S.14494|12:T>G  
 172.48 D.11472  
 173.45 D.05858  
 173.55 D.07413  
 174.06 S.14856|17:A>G  
 174.84 D.22746  
 176.10 S.13175|38:T>G  
 176.39 D.08229  
 177.74 S.19892|5:T>C  
 178.83 S.20353|9:A>G  
 180.53 S.23579|39:C>A  
 184.11 S.24287|21:A>C  
 187.11 S.26956|36:A>T\*\*\*\*

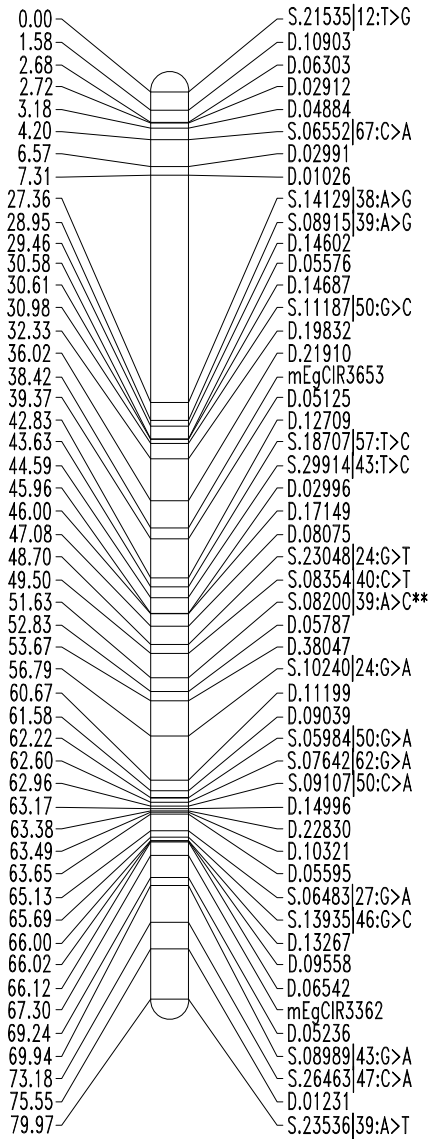
### LG 3 (1)



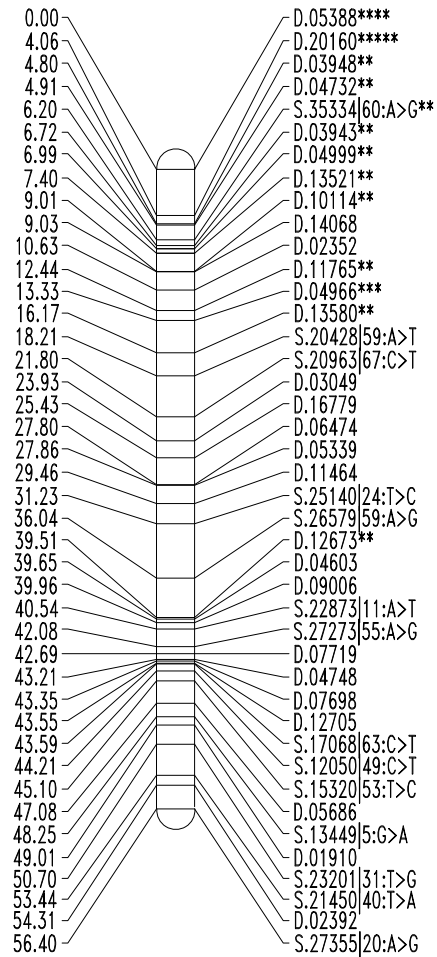
### LG 3 (2)



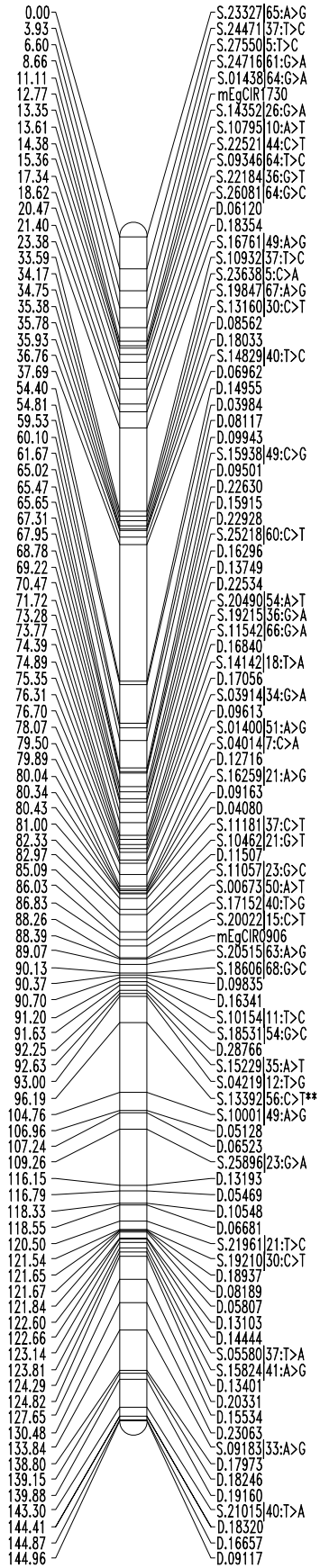
## LG 4A



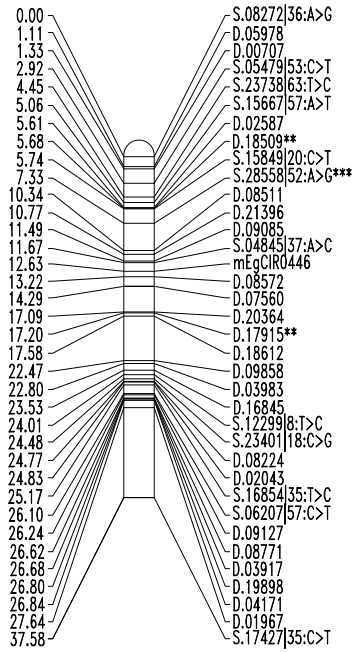
## LG 4B



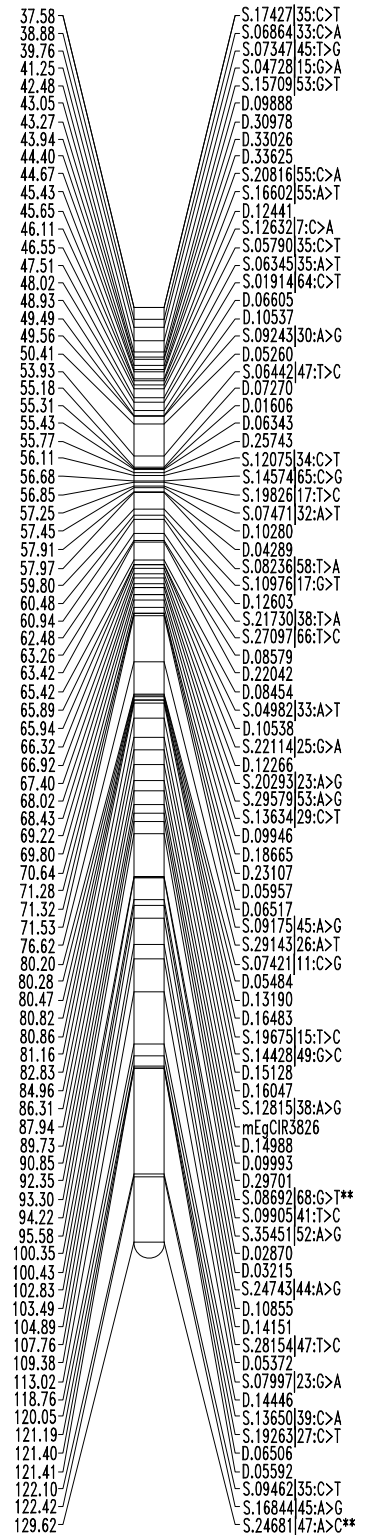
LG 5



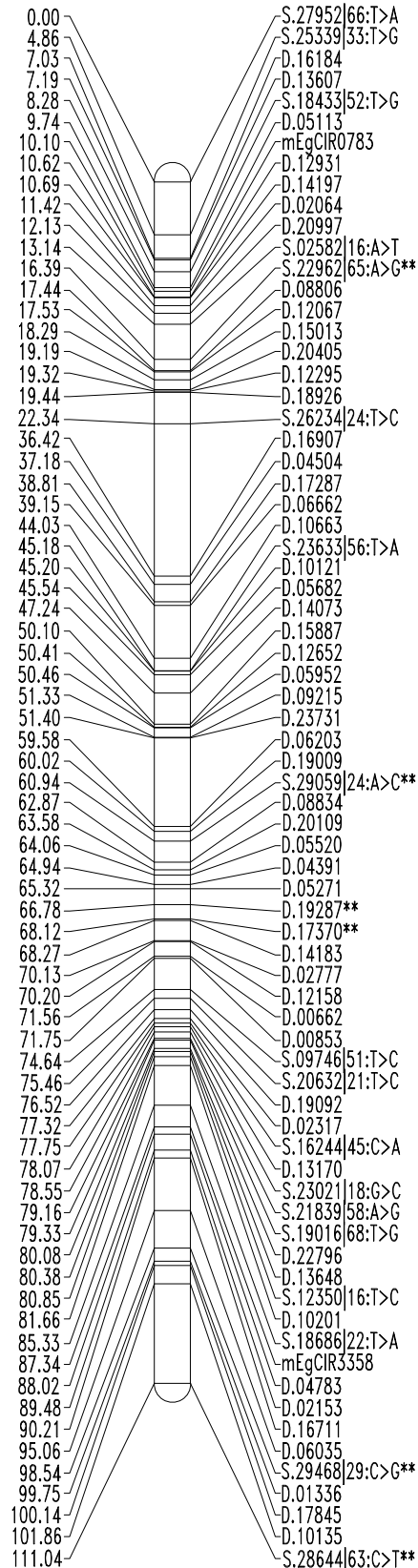
LG 6 (1)



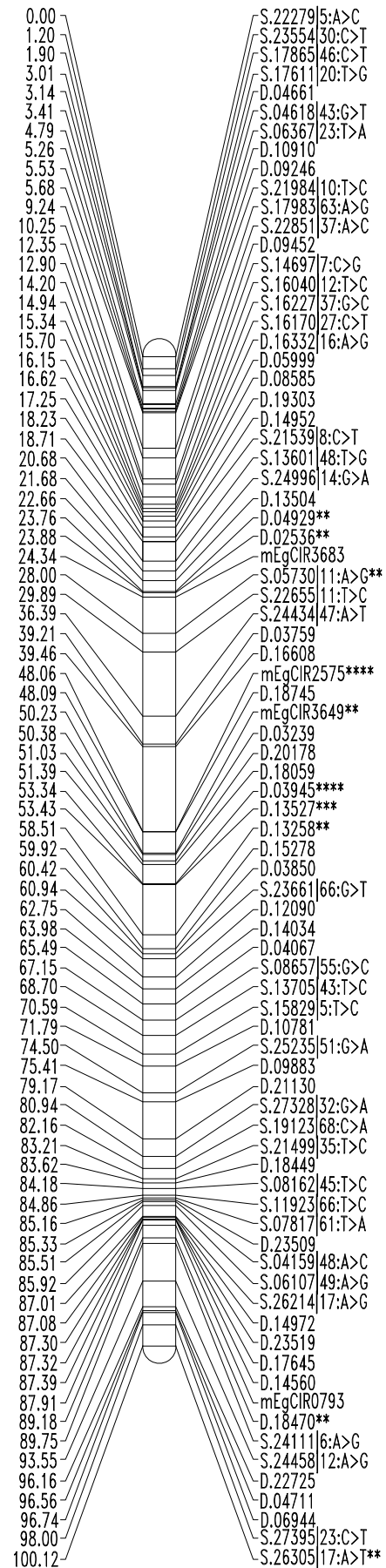
LG 6 (2)



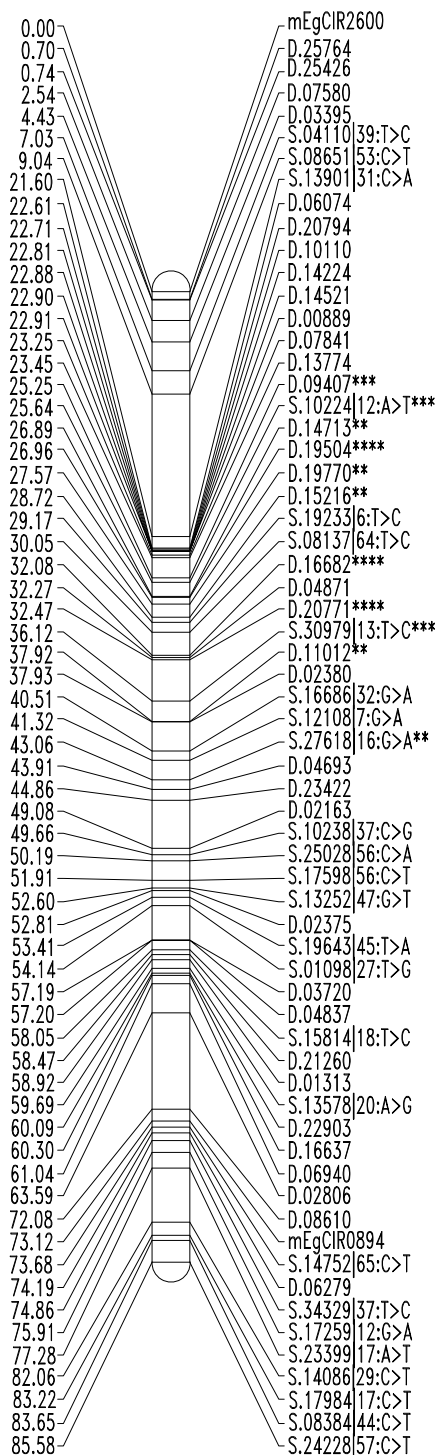
# LG 7



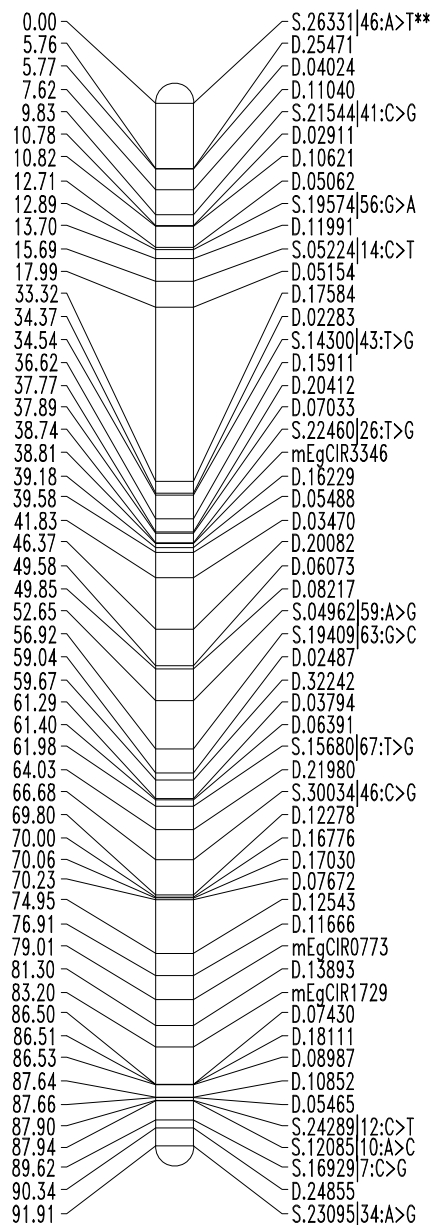
# LG 8



# LG 9

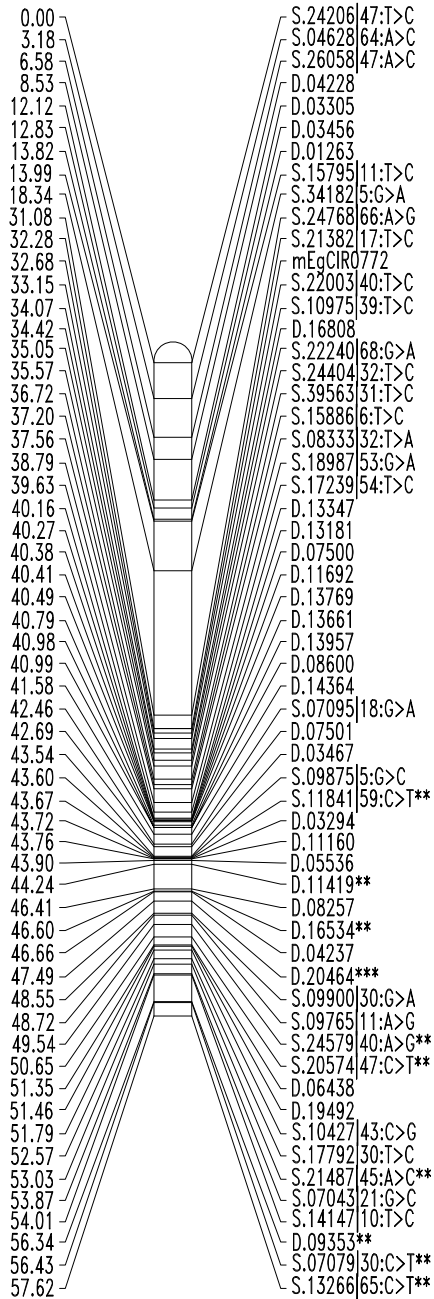


# LG 10

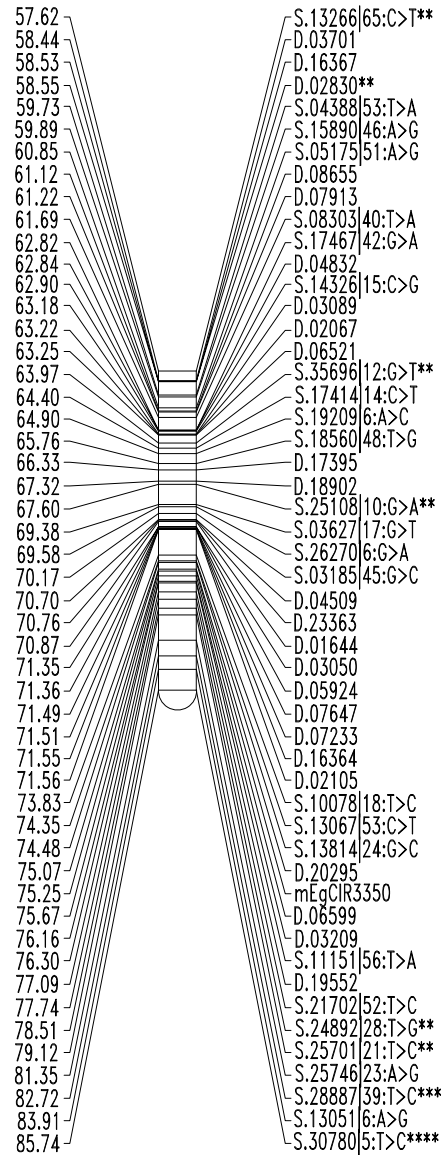




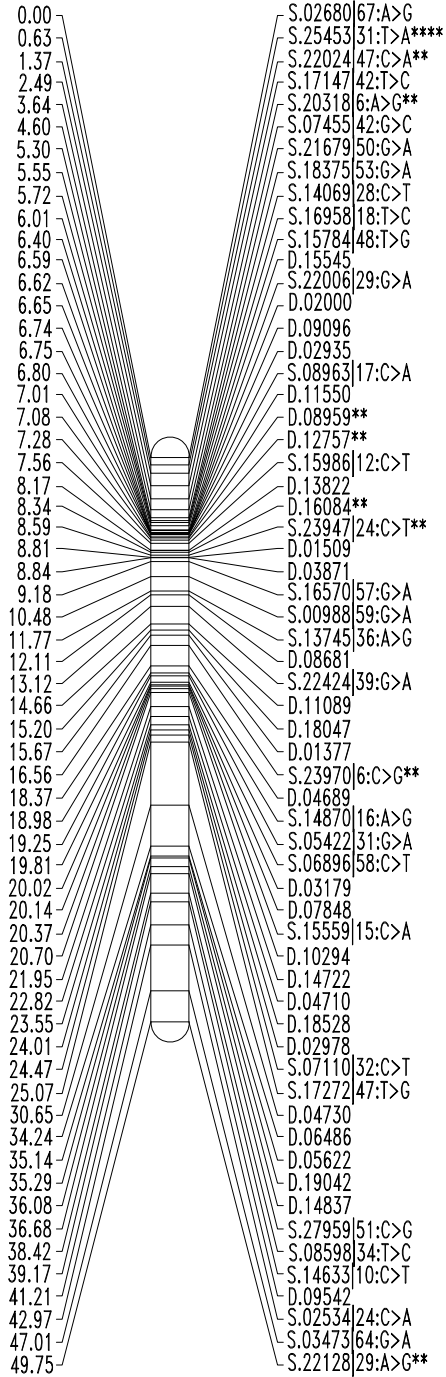
LG 11 (1)



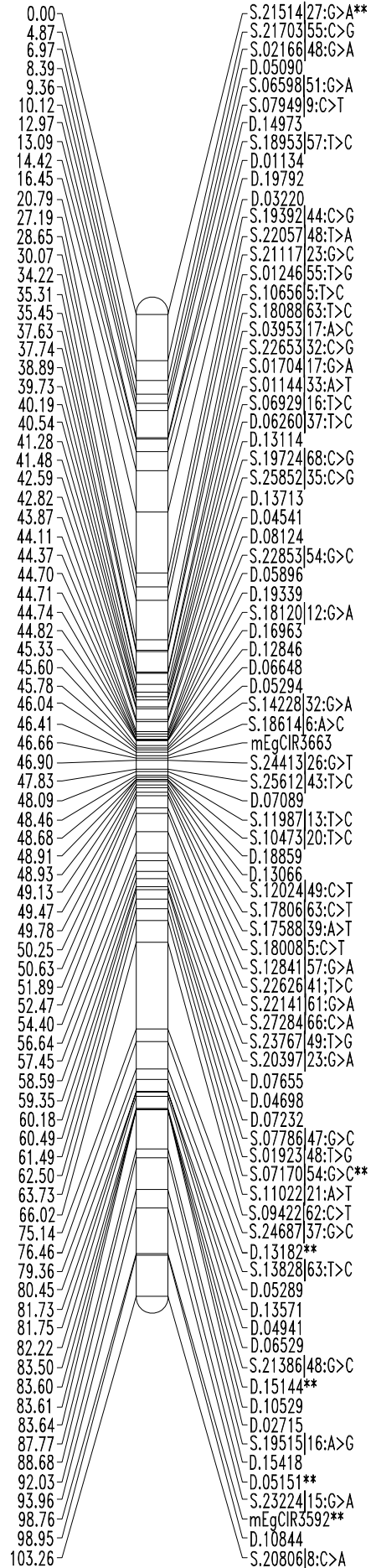
LG 11 (2)



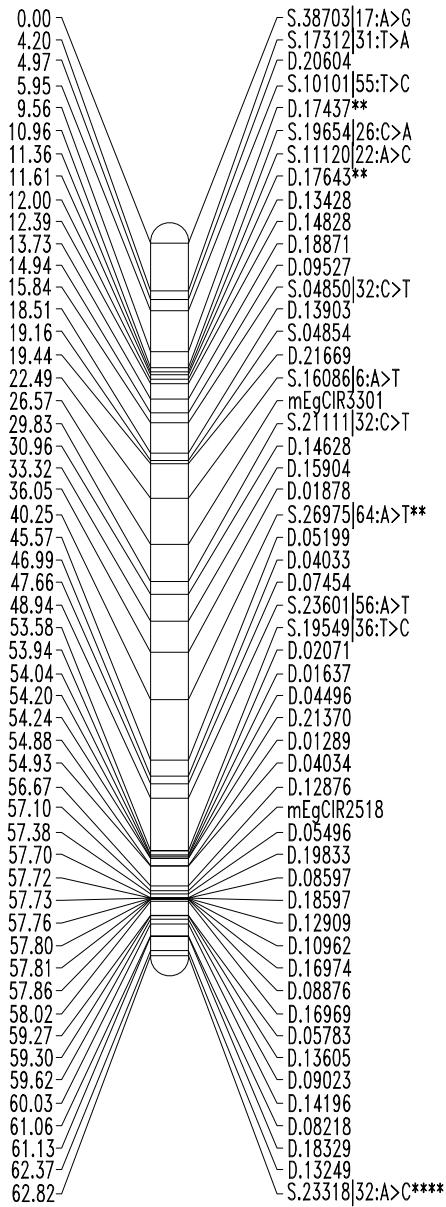
# LG 12



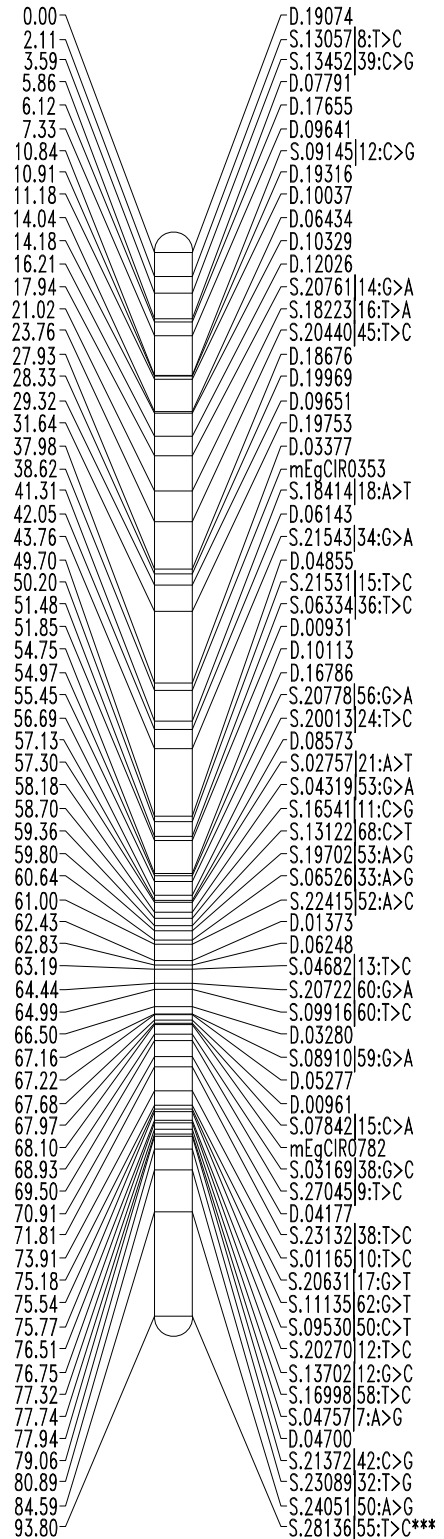
# LG 13



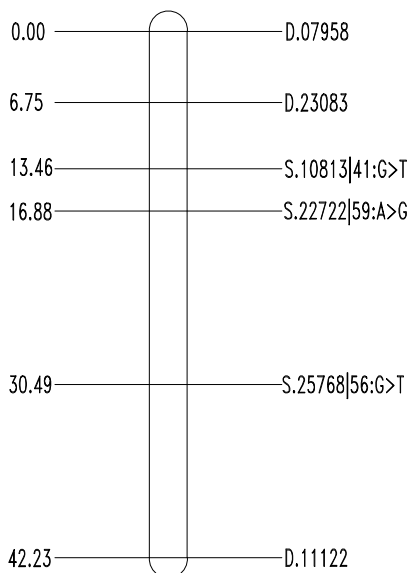
### LG14



### LG 15



### LG 16



**Fig. S2** Genetic linkage maps of the AA0769 population. The map consists of 1466 markers loci (32 SSR, 807 DArT, 626 SNP and *Sh* locus). Marker names are shown to the right of each LG, with map distances in centiMorgans (Haldane units) to the left. D: DArT marker, S: SNP marker, mEgCIR: *E. guineensis* SSR marker. \*: Skewed markers at  $P= 0.1$ , \*\*: Skewed markers at  $P= 0.05$ , \*\*\*: Skewed markers at  $P= 0.01$ , \*\*\*\*: Skewed markers at  $P= 0.005$ , \*\*\*\*\*: Skewed markers at  $P= 0.001$ .