

Supplemental material

Table S1 Day 90 outcomes in patients with seizures < 6 and < 24 hours

Day 90 outcomes	Seizure <6 hours		P	Seizure <24 hours		P
	Yes	No*		Yes	No*	
Death	7 (33.3)	268 (13.0)	0.006	18 (31.6)	257 (12.7)	<0.001
mRS 4-6	15 (71.4)	1020 (49.5)	0.045	40 (70.2)	995 (49.1)	0.002
Barthel Index	35.3 (43.6)	59.8 (41.4)	0.008	39.6 (43.3)	60.1 (41.3)	<0.001
EQ5D HUS	0.19 (0.40)	0.38 (0.40)	0.031	0.23 (0.42)	0.39 (0.40)	0.004
TICS	7.1 (13.2)	17.0 (11.7)	0.008	9.5 (13.2)	17.2 (11.6)	0.004
ZDS	82.7 (28.3)	59.9 (27.4)	0.006	76.5 (31.9)	59.6 (27.2)	0.007

Data are numbers (%) or mean (standard deviation). Analyses are Chi-Squared or t-Student tests for categorical and continuous data respectively, limited to patients who survived more than 7 days. *Include patients with no seizures and seizures after 6 or 24 hours. EQ5D HUS=EuroQoL-5D Health Utility Scores; mRS=modified Rankin Scale; TICS=Telephone Interview Cognitive Status; ZDS= Zung Depression Scale

Table S2 Day 90 outcomes in patients with single, multiple and no seizure

Day 90 outcomes	Single seizure	No seizures	P	Multiple seizures	P*
Death	21 (29.6)	232 (12.1)	<0.001	18 (26.5)	<0.001
mRS 4-6	47(66.2)	925 (48.3)	0.003	47 (69.1)	0.001
Barthel Index	41.4 (44.5)	61.2 (40.9)	<0.001	39.5 (43.2)	<0.001
EQ5D HUS	0.25 (0.41)	0.39 (0.40)	0.002	0.25 (0.39)	0.004
TICS	10.0 (13.2)	17.5 (11.5)	0.002	10.2 (12.4)	<0.001
ZDS	75.9 (31.0)	59.0 (26.9)	0.002	72.7 (32.2)	0.017

Data are numbers (%) or mean (standard deviation). Analyses are Chi-Squared or t-Student tests for categorical and continuous data respectively, limited to patients who survived more than 7 days. *Comparison between multiple seizures and no seizures. EQ5D HUS=EuroQoL-5D Health Utility Scores; mRS=modified Rankin Scale; TICS=Telephone Interview Cognitive Status; ZDS= Zung Depression Scale

Table S3 Cox regression analysis of time-to-death within 90 days

Variables	Adjusted HR (95% CI)	P
Early seizures	1.72 (1.31-2.27)	<0.001
Age (years)	1.05 (1.04-1.06)	<0.001
Sex (male)	1.14 (0.93-1.37)	0.21
Premorbid modified Rankin Scale	1.13 (1.05-1.22)	0.001
National Institutes of Health Stroke Scale	1.07 (1.05-1.08)	<0.001
Systolic blood pressure (per mmHg)	1.00 (1.00-1.01)	0.46
Onset to CT time (hours)	0.91 (0.84-0.99)	0.023
Prior antiplatelet therapy	1.31 (1.09-1.59)	0.005
Lobar location	0.82 (0.64-1.05)	0.12
Baseline haematoma volume (per 10 mL)	1.18 (1.14-1.22)	<0.001
Intraventricular haemorrhage	1.37 (1.13-1.67)	0.002

CI=confidence interval; CT=computed tomography; HR=hazard ratio

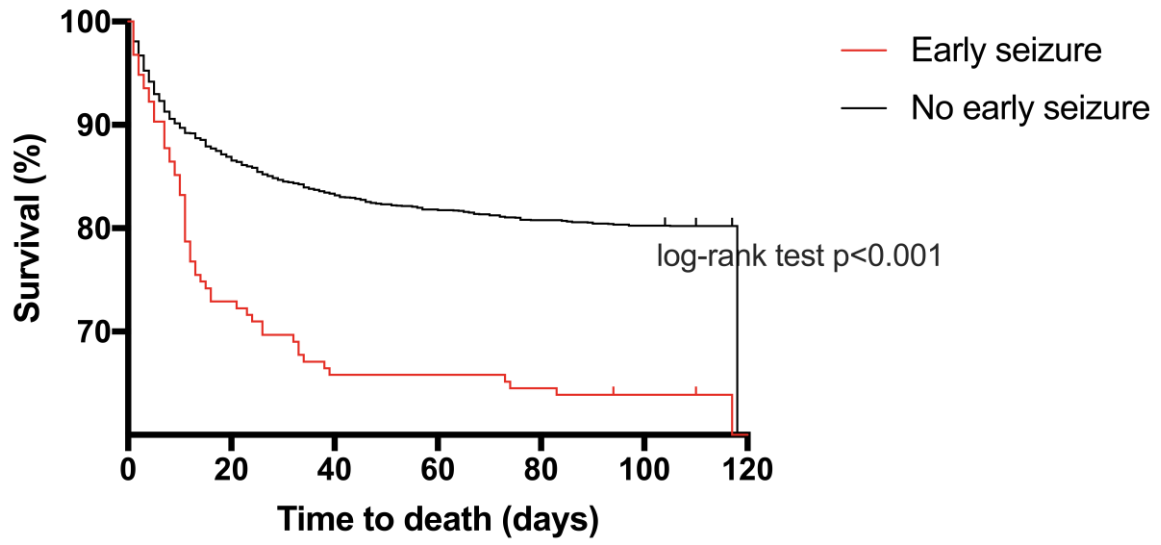


Figure S1 Kaplan-Meier curves show survival up to 90 days in patients with early seizures and no early seizure.