

# UK Multicenter Prospective Evaluation of the Leibovich Score in Localized Renal Cell Carcinoma: Performance has Altered Over Time

Naveen S. Vasudev, Michelle Hutchinson, Sebastian Trainor, Roisean Ferguson, Selina Bhattarai, Adebajji Adeyoku, Jon Cartledge, Michael Kimuli, Shibendra Datta, Damian Hanbury, David Hrouda, Grenville Oades, Poulam Patel, Naeem Soomro, Grant D. Stewart<sup>a</sup>, Mark Sullivan, Jeff Webster, Michael Messenger, Peter J. Selby, and Rosamonde E. Banks

<b>OBJECTIVE</b>	To examine changes in outcome by the Leibovich score using contemporary and historic cohorts of patients presenting with renal cell carcinoma (RCC)
<b>PATIENTS AND METHODS</b>	Prospective observational multicenter cohort study, recruiting patients with suspected newly diagnosed RCC. A historical cohort of patients was examined for comparison. Metastasis-free survival (MFS) formed the primary outcome measure. Model discrimination and calibration were evaluated using Cox proportional hazard regression and the Kaplan-Meier method. Overall performance of the Leibovich model was assessed by estimating explained variation.
<b>RESULTS</b>	Seven hundred and six patients were recruited between 2011 and 2014 and RCC confirmed in 608 (86%) patients. Application of the Leibovich score to patients with localized clear cell RCC in this contemporary cohort demonstrated good model discrimination ( <i>c</i> -index = 0.77) but suboptimal calibration, with improved MFS for intermediate- and high-risk patients (5-year MFS 85% and 50%, respectively) compared to the original Leibovich cohort (74% and 31%) and a historic (1998-2006) UK cohort (76% and 37%). The proportion of variation in outcome explained by the model is low and has declined over time (28% historic vs 22% contemporary UK cohort).
<b>CONCLUSION</b>	Prognostic models are widely employed in patients with localized RCC to guide surveillance intensity and clinical trial selection. However, the majority of the variation in outcome remains unexplained by the Leibovich model and, over time, MFS rates among intermediate- and high-risk classified patients have altered. These findings are likely to have implications for all such models used in this setting. UROLOGY 00: 1–7, 2019. © 2019 Elsevier Inc.

<sup>a</sup> Current affiliation: Department of Surgery, University of Cambridge, Cambridge Biomedical Campus, Addenbrooke's Hospital, Cambridge, UK.

**Funding:** This project was funded by the National Institute for Health Research Programme Grants for Applied Research programme (project number [NIHR PGfAR RP-PG-0707-10101](https://www.journals.library.nihr.ac.uk/pgfar/pgfar06030/#/abstract)) and has been published in full in Programme Grants for Applied Research Volume: 6, Issue: 3. Further information available at: <https://www.journals.library.nihr.ac.uk/pgfar/pgfar06030/#/abstract>. Additional support was provided by the NIHR Leeds Clinical Research Facility.

From the Leeds Institute of Medical Research at St James's, St. James's University Hospital, Leeds, UK; the Department of Pathology, St James's University Hospital, Leeds, UK; the Stockport NHS Foundation Trust, Stockport, UK; the Department of Urology, St James's University Hospital, Leeds, UK; the University Hospital of Wales, Cardiff Heath Park, Cardiff, Wales; the Lister Hospital, Stevenage, UK; the Charing Cross Hospital, Imperial College Healthcare NHS Trust, London, UK; the Queen Elizabeth University Hospital, Glasgow, UK; the Division of Cancer & Stem Cells, School of Medicine, University of Nottingham, Nottingham, UK; the Newcastle Upon Tyne Hospitals NHS Foundation Trust, Newcastle upon Tyne, UK; the NHS Lothian, Edinburgh, UK; the Oxford University Hospitals NHS Foundation Trust, Oxford, UK; and the Northwick Park Hospital, Harrow, UK

Address correspondence to: N Vasudev, M.D., Ph.D., St. James's University Hospital, Beckett Street, Leeds LS9 7TF, UK. E-mail: [n.vasudev@leeds.ac.uk](mailto:n.vasudev@leeds.ac.uk)

Submitted: August 19, 2019, accepted (with revisions): September 13, 2019

Numerous changes have taken place over the past 2 decades in relation to the diagnosis and management of patients presenting with renal cell carcinoma (RCC). Alongside significant continued projected increases in incidence,<sup>1</sup> rates of obesity and tobacco smoking, established RCC risk factors, have altered<sup>2-4</sup> and there has been a general shift away from radical nephrectomy (RN) to partial nephrectomy (PN),<sup>5</sup> and minimally invasive instead of open procedures.<sup>6</sup>

Outcomes in patients postnephrectomy for localized RCC are highly variable, but risk stratification tools have not evolved during this same period, remain reliant on clinicopathologic criteria alone and typically explain only a small proportion of the observed variance in outcomes.<sup>7</sup> As clinical practice and tumor biology changes, so too can the performance of such models and agreement between observed and predicted outcomes may shift over time.

Indeed, recently reported trials of adjuvant therapy, conducted across North America and Asia, in patients deemed at high risk of relapse based on tumor stage and grade, have shown better than expected disease-free survival rates among placebo-treated patients, when compared to historical data.<sup>8-10</sup>

In Europe, the most widely used risk stratification tool is the Leibovich score, developed in 2003 in patients undergoing RN between 1970 and 2000 at a single high-volume US centre.<sup>11</sup> Its performance in a contemporary, prospective, multi-institutional European cohort has not been assessed. We conducted a National Institute for Health Research funded prospective observational multicenter cohort study to generate a high-quality biobank with associated clinical data and follow-up for the evaluation of novel and emerging prognostic RCC biomarkers.<sup>12</sup> Here, utilizing both this cohort and a distinct historical group of UK patients, we examine outcomes by the Leibovich score and reveal alteration in performance of the model over time.

## METHODS

### Patients and Samples

Patients from 11 UK centers with newly diagnosed suspected RCC, of all stages and histologic types, with no prior treatment, were eligible. Exclusion criteria were those with known familial RCC (eg, VHL syndrome), renal cancer acquired following and/or during renal replacement therapy and those at high risk or with known HIV, Hepatitis B/C or other blood-borne infectious disease. Patients undergoing any procedure, including ablation, radical or PN or biopsy only, were eligible for the overall study, although only nephrectomized patients were included in the current analysis. Baseline clinical, biochemical, and hematological data were collected, together with follow-up data, all using standardized case report forms and co-ordinated through the Leeds Clinical Trials Research Unit. As part of the study, and following informed written consent, baseline blood and urine samples and an Formalin fixed paraffin embedded (FFPE) tumor tissue block (from patients undergoing nephrectomy) were also collected. The study was approved by the Local Research Ethics Committee (ethical approval 10/H1306/6). A historical cohort, composed of patients attending St James's University Hospital, Leeds between 1998 and 2006, who had been prospectively recruited to a local biobanking study using the same eligibility and exclusion criteria as above were also included as a separate cohort for comparison.

### Pathology

Original pathology reports were requested and tumor type, stage, size, and lymph node status, as well as presence or absence of necrosis and sarcomatoid and/or rhabdoid change, extracted. For clear cell RCC (ccRCC) cases only, the Leibovich score was also calculated.<sup>11</sup> Baseline imaging (CT/MRI) reports were also reviewed.

### Statistical Methods

Metastasis-free survival (MFS) was calculated for patients with localized disease, defined as the period from date of nephrectomy to date of distant recurrence. Patients without recurrence were censored at the date they were last known to be recurrence free (for patients who died without recurrence this was date of death).

Patient characteristics in the contemporary and historic cohorts were compared using Wilcoxon rank-sum and chi-squared tests. Where information was available, categorical variables were compared with data from the original Leibovich cohort.

Performance of the Cox proportional hazard (PH) model on which the Leibovich score is based was assessed in terms of discrimination, calibration,<sup>13</sup> and estimation of explained variation (EV).<sup>14</sup> Cox PH models with Leibovich risk group as predictor were used to estimate hazard ratios and *c*-index to assess discrimination. The Kaplan-Meier method was used to estimate and visualize MFS to assess calibration. EV was calculated as described<sup>14</sup> using downloadable R scripts<sup>15</sup> adapted in house. In addition to an estimate of EV for the model as a whole, this method allows for the approximation of the proportion of EV which can be attributed to individual model elements in both the univariate (unadjusted EV) and multivariable (adjusted EV) setting. Unadjusted EV was calculated by including each of the Leibovich score elements, in turn, into a univariate Cox PH model with MFS as the response variable. Adjusted EV was calculated as the difference in EV between the Cox PH model including all elements of the Leibovich score, and the multivariable model excluding each of the elements in turn, to give an estimate for each variable when adjusting for the others.

All statistical tests were 2-sided, all analyses were undertaken in the R environment for statistical computing.<sup>16</sup>

## RESULTS

In total, 706 patients were recruited to the study between July 2011 and June 2014 from 11 UK centers. An RCC was subsequently confirmed in 608 (86%) cases with 79% of these being clear cell, 10% papillary, 8% chromophobe, and 3% unclassified tumors. Characteristics for all RCC patients are shown in [Supplementary Table S1](#) with details of patients found not to have RCC shown in [Supplementary Table S2](#). A flow diagram of patients is presented in [Supplementary Figure S1](#).

### RCC Patients

**Leibovich Score Performance.** The performance of the Leibovich score was assessed using the same inclusion and exclusion criteria as the original report,<sup>11</sup> with the exception that patients undergoing PN were included in our analyses to reflect current practice. Of the 480 ccRCC patients in our contemporary UK cohort, 384 were eligible and had complete data to allow calculation of the Leibovich score and MFS. For comparison, and to examine changes over time in UK cohorts, we examined the performance of the Leibovich score in a historical cohort of 191 patients undergoing nephrectomy for ccRCC between 1998 and 2006 at a single UK institution (Leeds).

Clinical and demographic characteristics of the contemporary ccRCC subcohort and historical cohort are shown in [Table 1](#), alongside available patient characteristics from the original Leibovich cohort. Median follow-up in the contemporary and historic UK cohorts was 4.4 years (IQR: 3.4, 5.2) and 10.7 years (IQR: 7.87, 12.71), respectively. Certain elements of the model, such as tumor necrosis and lymph node status, have remained constant over time. However, shifts in the distribution of tumor grade, size, and pT stage are evident, which start to become apparent when comparing the Leibovich cohort (1970-2000) with the historic UK cohort (1998-2006) and persist in the contemporary UK cohort (2011-2014). These differences would, however, be expected to be accounted for by the model.

**Table 1.** Characteristics of nephrectomized localized ccRCC patients included in analysis

Characteristic		Cohorts		
		Contemporary UK 2011-2014 <i>n</i> = 384	Historic UK 1998-2006 <i>n</i> = 191	Original Leibovich 1970-2000 <i>n</i> = 1671
Age at procedure	Median (range)	63 (29, 92)	64 (29, 86)	65 (24, 89)
Gender	Male	252 (66)	110 (58)	1061 (64)
	Female	132 (34)	81 (42)	610 (36)
Procedure <sup>†,‡,§</sup>	PN	100 (26)	12 (6)	0 (0)
	RN	284 (74)	178 (93)	1671 (100)
	Missing	0 (0)	1 (1)	0 (0)
Stage <sup>‡</sup>	I	227 (59)	93 (49)	NA
	II	42 (11)	13 (7)	NA
	III	115 (30)	85 (45)	NA
Leibovich Score elements				
Tumor size (mm)	Median (range)	50 (11, 180)	55 (2, 160)	65 (8, 240)
Tumor size <sup>†,§</sup>	≤10 cm	350 (91)	166 (87)	1312 (78)
	>10 cm	34 (9)	25 (13)	359 (22)
Grade <sup>†,§</sup>	1	6 (2)	6 (3)	182 (11)
	2	131 (34)	61 (32)	786 (47)
	3	200 (52)	94 (49)	600 (36)
	4	47 (12)	30 (16)	103 (6)
pT <sup>*,†,‡,§</sup>	1a	126 (33)	45 (24)	384 (23)
	1b	102 (27)	48 (25)	440 (26)
	2	42 (11)	16 (8)	335 (20)
	3	114 (29)	82 (43)	507 (30)
	4	0 (0)	0 (0)	5 (1)
pN	0/X	376 (98)	181 (95)	1605 (96)
	1	8 (2)	10 (5)	56 (3)
	2	0 (0)	0 (0)	10 (1)
Necrosis	No	282 (73)	146 (76)	1232 (74)
	Yes	102 (27)	45 (24)	439 (26)
<i>Leibovich risk group</i>				
	Low	150 (39)	60 (31)	689 (41)
	Intermediate	163 (42)	86 (45)	608 (36)
	High	71 (19)	45 (24)	374 (22)

NA, not available; PN, partial nephrectomy; RN, radical nephrectomy.

\* AJCC 2002 TNM staging applied in original Leibovich and historic UK cohorts vs 2010 TNM staging applied to contemporary UK cohort.

† *P* < .05 Leibovich vs contemporary UK cohort.

‡ *P* < .05 contemporary UK vs historic UK cohort.

§ *P* < .05 Leibovich vs historic UK cohort.

The *c*-index of the Cox PH model with risk group as the predictor in the contemporary UK cohort was 0.77 (SE: 0.04) and in the historic UK cohort was 0.73 (SE: 0.04), demonstrating good model discrimination, further evidenced by corresponding hazard ratios in the intermediate- and high-risk groups; 5.11, 95% CI: (1.77-14.8), and 23.4, 95% CI: (8.30-66.0), respectively, in the contemporary cohort and 4.22, 95% CI: (1.62-11.0) and 16.1, 95% CI: (6.16-42.2), in the historic cohort (with low risk the reference).

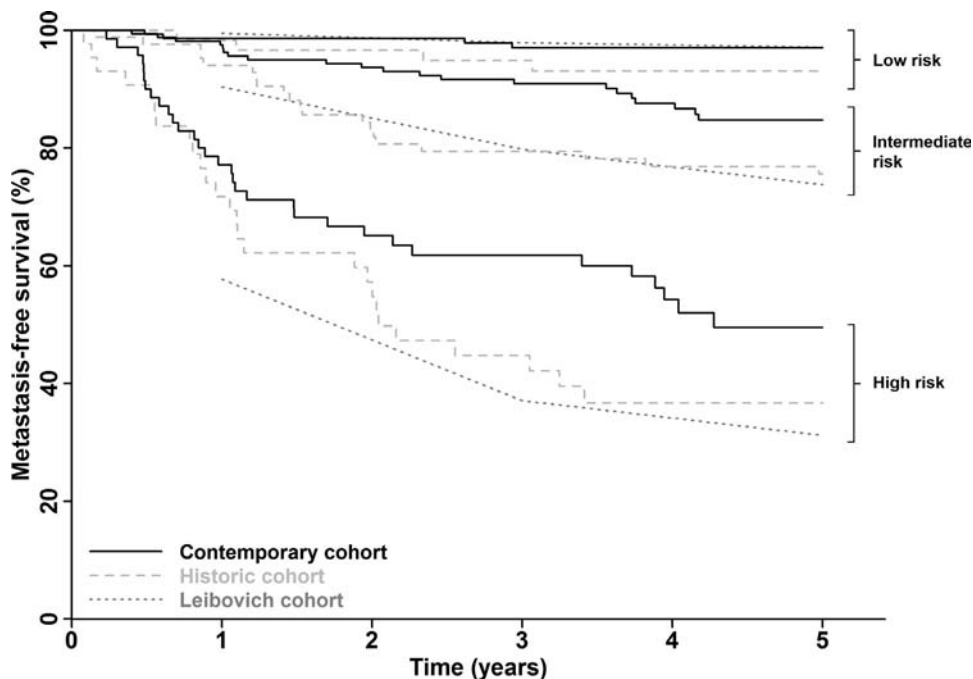
Figure 1 shows Kaplan-Meier curves for the risk groups in both UK cohorts and approximate survival curves estimated from MFS figures reported in the original Leibovich paper, and comparative 1-, 3-, and 5-year MFS rates are shown in Table 2. The Kaplan-Meier plots confirm the discriminative ability of the model to differentiate between risk groups. The agreement of the survival curves between the historic and original Leibovich cohorts suggest a degree of calibration, however, the survival curves for the contemporary cohort in the intermediate- and high-risk groups are not well aligned with the Leibovich data curves, indicating some degree of miscalibration. This is also evident in the observed MFS rates. For example, at year 5, while MFS rates in the high-risk group in the original and historic

cohorts are similar (31% and 37%, respectively), it is higher in our contemporary high-risk group (50%).

The percentage of variation explained by the Cox PH model on which the Leibovich score is based was 28% in the historic UK cohort and 22% in the contemporary UK cohort (Table 3). The majority of EV (unadjusted and adjusted) was attributable to tumor stage in both cohorts, while the contribution of tumor grade and presence of necrosis to the EV was observed to decrease with time.

## DISCUSSION

Our ability to deliver effective patient centered cancer care depends substantially on our ability to estimate likely patient outcomes to aid our planning and as part of shared decision taking. Although clinicopathologic models have become widely incorporated into clinical pathways to guide decision making, it should be recognized that the performance of such models may alter over time and must, therefore, be periodically re-examined. Here, by example, we show that the performance of the Leibovich score has



**Figure 1.** Metastasis-free survival by Leibovich risk group. Survival curves are shown for patients in the contemporary UK cohort, a comparative historical UK cohort and the original US cohort as reported by Leibovich et al.<sup>11</sup>

**Table 2.** 1-, 3-, and 5-year metastasis-free survival rates by Leibovich risk group

Leibovich Risk Group	Cohorts		
	Contemporary UK <i>n</i> = 384	Historic UK <i>n</i> = 191	Original Leibovich <i>n</i> = 1671
<i>1-year MFS rate (%) SE</i>			
Low	99 ± 1	98 ± 2	99.5 ± 0.3
Intermediate	98 ± 1	94 ± 3	90.4 ± 1.2
High	77 ± 5	72 ± 7	57.7 ± 2.6
<i>3-year MFS rate (%) SE</i>			
Low	97 ± 1	95 ± 3	97.9 ± 0.6
Intermediate	91 ± 2	79 ± 4	79.8 ± 1.7
High	62 ± 6	45 ± 8	37.1 ± 2.7
<i>5-year MFS rate (%) SE</i>			
Low	97 ± 1	93 ± 3	97.1 ± 0.7
Intermediate	85 ± 3	76 ± 5	73.8 ± 2.0
High	50 ± 7	37 ± 8	31.2 ± 2.7

SE, standard error.

**Table 3.** Proportion of explained variation by UK cohort. Estimate of explained variation (EV) for the full model and that which can be attributed to individual model elements in both the univariate (unadjusted EV) and multivariable (adjusted EV) setting are presented

Historic UK cohort		Unadjusted explained variation (%)	Adjusted explained variation (%)
pT		16.84	5.35
pN		2.47	0.20
Tumor ≥100 mm		5.91	0.47
Grade		12.53	2.97
Necrosis		14.07	3.75
Full model		27.95	
Contemporary UK cohort		Unadjusted explained variation (%)	Adjusted explained variation (%)
pT		14.86	6.95
pN		3.33	0.13
Tumor ≥100 mm		5.88	0.57
Grade		8.01	1.48
Necrosis		8.53	1.11
Full model		21.75	

altered with time, carrying potential implications for other prognostic models, developed more than a decade ago, both in localized RCC,<sup>17-19</sup> and other settings.

The discriminative ability of the Leibovich model appears to have been retained over time, with a similar *c*-index in both the current cohort as well as in a historical UK cohort, which we examined for comparative purposes and to try to control for factors other than time of recruitment (such as a UK vs US setting). Furthermore, the distribution of patients across low-, intermediate-, and high-risk groups has remained constant. Although absence of baseline survival function (or raw data) from the original Leibovich study limits options with regards to assessing model calibration, our indirect assessment of calibration implies a decline over time. While MFS rates were remarkably similar between the original Leibovich cohort and our historical cohort, patients in our contemporary cohort demonstrated reduced relapse rates among intermediate- and high-risk groups. For example, the 5-year MFS among high-risk patients in the original Leibovich, historic and contemporary cohorts was 31.2%, 37%, and 50%, respectively.

This is important given that the Leibovich score is widely employed in the clinic to counsel patients, guide intensity of follow-up and for the design and powering of adjuvant studies. Ongoing phase III trials (eg, NCT03288532), examining the efficacy of adjuvant checkpoint inhibitors, include patients with intermediate-risk disease as defined by the Leibovich score, although our findings suggest that the majority (85%) of these patients remain metastasis free at 5 years, and therefore likely cured, through surgery alone. Given the associated costs, resource implications and potential toxicity of immunotherapy, it is imperative that patient selection is optimized and that the performance of risk stratification tools in the population in which they are being applied is understood and accounted for.

The reasons for the improvement in MFS rates and alteration in performance of the model over time are uncertain. It is likely, however, that changes in practice, such as advances in imaging, improvements in surgical techniques and refinement of grading and classification of tumors that have taken place over the past 2 decades are, at least in part, responsible. Retrospective vs prospective data collection, varying geographical location and methodological differences may also be considered, although we have tried to account for this by including a historical UK cohort of patients and by replicating the original study design as closely as possible. It is also important to recognize that, while the elements making up the Leibovich score represent independent prognostic factors in patients with resected ccRCC,<sup>20</sup> the importance of even such strong prognostic factors in determining outcome at an individual patient level is often low.<sup>7</sup> Methods to quantify this (termed explained variance) have long been developed and recently highlighted,<sup>7</sup> although as a concept remains poorly understood and underutilized. We found that the Leibovich model accounted for just 28% of the observed variance in MFS in our historical cohort,

declining to 22% among contemporary patients. Thus, the majority of the variance in outcomes remains unexplained by the model and refinement limited to consideration of additional clinical factors alone<sup>21</sup> seems unlikely to meaningfully improve this situation. Differences in molecular tumor biology, for example, that are likely to be critical in determining individual outcomes, remain unaccounted for and poorly defined. Even small changes in these unknown variables over time, conceivably in this case due to shifts in rates of obesity, smoking, and hypertension, are likely to significantly impact the performance of a given model.

Only a small number of studies have examined the performance of the Leibovich score since its original description. These include a retrospective study among Asian patients (*n* = 355) undergoing nephrectomy between 1990 and 2006<sup>22</sup> and a second, much larger, retrospective European single institution study of patients undergoing nephrectomy between 1984 and 2006.<sup>23</sup> The discriminative ability of the Leibovich score was confirmed in both studies, with 5-year DFS rates of 76.8% and 33.6% for intermediate- and high-risk groups in the former study, which are comparable to those originally reported.<sup>11,22</sup> A more contemporary, but again retrospective, study of 386 patients conducted in Norway between 1993 and 2013 reported suboptimal calibration for patients in the intermediate- and high-risk groups, with a 5-year relapse-free survival among high-risk patients of 41.2%, in support of our current findings.<sup>24</sup> More recently still, the performance of 8 different prognostic models, including the Leibovich score, has been reported among US patients recruited to the phase III adjuvant ASSURE trial between 2006 and 2010.<sup>25</sup> The 5-year MFS rates were 79.6% (95% CI: 76.5-82.4) and 61.8% (57.2-66.1) among Leibovich-score defined intermediate- and high-risk patients, respectively, with a *c*-index for the model of 0.625 (0.623-0.626).<sup>26</sup> While our data demonstrate better maintained discriminatory ability of the Leibovich model, the observed improvement in MFS rates over time are consistent with our findings in our UK cohort of patients. Furthermore, the fact that the majority (95%) of patients in ASSURE underwent a RN suggests that the inclusion of patients undergoing a PN does not account for these differences.

The strengths of this study include its multicenter prospective design, with comprehensive baseline and follow-up data collection and the inclusion of a comparative historical cohort of UK patients. As one of the main study objectives, a translational biobank has been generated, to support the validation of prognostic and diagnostic RCC biomarkers. Limitations include the lack of central pathology review and a shorter median length of follow-up of 4.4 years in the current cohort, compared to 5.4 years as originally reported by Leibovich et al.<sup>11</sup>

## CONCLUSION

In summary, we provide the most contemporary assessment of the Leibovich score to date and show that

outcomes for patients classified as being at intermediate- or high risk have altered over time. Our findings carry implications for this model, and potentially other nomograms applied in this or other settings, to guide clinical decision-making. Identification of patients destined to relapse remains suboptimal, highlighting the need for improved risk stratification tools.

**ACKNOWLEDGMENTS.** We are grateful to the patients for donating samples, the staff at participating centers who assisted in patient recruitment and staff at the Leeds Clinical Trials Research Unit. The supporting infrastructure from the Leeds Biobanking and Sample Processing Lab is also acknowledged. The views and opinions expressed by the authors in this publication are those of the authors and do not necessarily reflect those of the NHS, the NIHR or the Department of Health.

## SUPPLEMENTARY MATERIALS

Supplementary material associated with this article can be found in the online version at <https://doi.org/10.1016/j.urology.2019.09.044>.

## References

- Smittenaar CR, Petersen KA, Stewart K, et al. Cancer incidence and mortality projections in the UK until 2035. *Br J Cancer*. 2016;115:1147–1155.
- Baker C. *Obesity Statistics. Briefing Paper*. House of Commons Library; 2018. Briefing Paper. Number 3336.
- von Ruesten A, Steffen A, Floegel A, et al. Trend in obesity prevalence in European adult cohort populations during follow-up since 1996 and their predictions to 2015. *PLoS One*. 2011;6:e27455.
- Lortet-Tieulent J, Renteria E, Sharp L, et al. Convergence of decreasing male and increasing female incidence rates in major tobacco-related cancers in Europe in 1988-2010. *Eur J Cancer*. 2015;51:1144–1163.
- Leslie S, Goh AC, Gill IS. Partial nephrectomy—contemporary indications, techniques and outcomes. *Nat Rev Urol*. 2013;10:275–283.
- Van Poppel H, Becker F, Cadeddu JA, et al. Treatment of localised renal cell carcinoma. *Eur Urol*. 2011;60:662–672.
- Gleiss A, Zeillinger R, Braicu EI, et al. Statistical controversies in clinical research: the importance of importance. *Ann Oncol*. 2016;27:1185–1189.
- Haas NB, Manola J, Dutcher JP, et al. Adjuvant treatment for high-risk clear cell renal cancer: updated results of a high-risk subset of the ASSURE randomized trial. *JAMA Oncol*. 2017;3:1249–1252.
- Motzer RJ, Haas NB, Donskov F, et al. Randomized phase III trial of adjuvant pazopanib versus placebo after nephrectomy in patients with localized or locally advanced renal cell carcinoma. *J Clin Oncol*. 2017;35:3916–3923.
- Ravaud A, Motzer RJ, Pandha HS, et al. Adjuvant sunitinib in high-risk renal-cell carcinoma after nephrectomy. *N Engl J Med*. 2016;375:2246–2254.
- Leibovich BC, Blute ML, Cheville JC, et al. Prediction of progression after radical nephrectomy for patients with clear cell renal cell carcinoma: a stratification tool for prospective clinical trials. *Cancer*. 2003;97:1663–1671.
- Selby PJ, Banks RE, Gregory W, et al. *Methods for the Evaluation of Biomarkers in Patients with Kidney and Liver Diseases: Multicentre Research Programme Including ELUCIDATE RCT*. Southampton, UK: Programme Grants for Applied Research; 2018.
- Royston P, Altman DG. External validation of a Cox prognostic model: principles and methods. *BMC Med Res Method*. 2013;13:33.
- Schemper M, Henderson R. Predictive accuracy and explained variation in Cox regression. *Biometrics*. 2000;56:249–255.

- <https://cemsis.meduniwien.ac.at/en/kb/science-research/software/statistical-software/surevsure/>.
- R: *A Language and Environment for Statistical Computing*. 2012. Vienna A.
- Zisman A, Pantuck AJ, Dorey F, et al. Improved prognostication of renal cell carcinoma using an integrated staging system. *J Clin Oncol*. 2001;19:1649–1657.
- Sorbellini M, Kattan MW, Snyder ME, et al. A postoperative prognostic nomogram predicting recurrence for patients with conventional clear cell renal cell carcinoma. *J Urol*. 2005;173:48–51.
- Frank I, Blute ML, Cheville JC, et al. An outcome prediction model for patients with clear cell renal cell carcinoma treated with radical nephrectomy based on tumor stage, size, grade and necrosis: the SSIGN score. *J Urol*. 2002;168:2395–2400.
- Sun M, Shariat SF, Cheng C, et al. Prognostic factors and predictive models in renal cell carcinoma: a contemporary review. *Eur Urol*. 2011;60:644–661.
- Leibovich BC, Lohse CM, Cheville JC, et al. Predicting oncologic outcomes in renal cell carcinoma after surgery. *Eur Urol*. 2018;73:772–780.
- Tan MH, Kanesvaran R, Li H, et al. Comparison of the UCLA Integrated Staging System and the Leibovich score in survival prediction for patients with nonmetastatic clear cell renal cell carcinoma. *Urology*. 2010;75:1365–1370. 1370 e1-3.
- Pichler M, Hutterer GC, Chromecki TF, et al. External validation of the Leibovich prognosis score for nonmetastatic clear cell renal cell carcinoma at a single European center applying routine pathology. *J Urol*. 2011;186:1773–1777.
- Beisland C, Gudbrandsdottir G, Reisaeter LA, et al. Contemporary external validation of the Leibovich model for prediction of progression after radical surgery for clear cell renal cell carcinoma. *Scand J Urol*. 2015;49:205–210.
- Haas NB, Manola J, Uzzo RG, et al. Adjuvant sunitinib or sorafenib for high-risk, non-metastatic renal-cell carcinoma (ECOG-ACRIN E2805): a double-blind, placebo-controlled, randomised, phase 3 trial. *Lancet*. 2016;387:2008–2016.
- Correa AF, Jegede O, Haas NB, et al. Predicting renal cancer recurrence: defining limitations of existing prognostic models with prospective trial-based validation. *J Clin Oncol*. 2019;37:2062–2071.

## EDITORIAL COMMENT

Oncologists have a great need to estimate treatment outcomes for their patients in order to counsel them properly, plan follow-up imaging to detect and treat recurrences, and refer for additional treatment and clinical trials. In the early surgical experience with renal cell carcinoma (RCC), tumors were large, often palpable, and with symptoms of bleeding and pain. Radical nephrectomy was the only effective treatment. Staging systems (Robson, TMN, AJCC, IUAC) described the local extent of the tumor, involvement of regional lymph nodes, and the presence of distant metastases to generate survival distributions in surgical series. Over the last 50 years, progress in surgery, pathology, radiology, medical oncology, and molecular biology have dramatically changed the RCC landscape. Nearly 70% of tumors today are considered small (<4 cm) and detected incidentally. Beginning in the early 2000's and continuing today, nomograms and prognostic algorithms were generated by centers with comprehensive RCC research programs in both clinically localized and metastatic disease patients. Models incorporated important prognostic features of kidney cancer pathology (histologic sub types, necrosis, vascular invasion, sarcomatoid elements) and clinical features (performance status, systemic symptoms, anemia, LDH, adjusted calcium, neutrophil counts, serum albumin levels, and bone metastases) to enhance their predictive value over prior

staging systems. Concordance indices for these models are generally between 0.7 and 0.8, far better than a coin flip but not a perfect 1.0 by any means. Risk assignments (poor, intermediate, and good) were made and reflected not only the RCC prognostic factors but evolving improvements in disease management approaches including diagnostic imaging (MRI, CT, and PET), surgical approaches (evolution of partial nephrectomy, cytoreductive nephrectomy), and pathologic expertise (cytogenetics, immunohistochemistry, gene, and protein expression markers).

It is not surprising that the authors report discrepancies in 3- and 5-year metastasis-free survival when applying a single model, the Mayo Clinic risk stratification score, to their multicenter contemporary (2011-2014) cohort of patients (85%, 50%) compared to the Mayo Clinic cohort (1970-2006) series (74%, 31%). The authors are concerned that risk assignment systems derived from historical patient cohorts may overestimate the likelihood of a poor outcome when applied to patients managed today with current clinical and pathologic tools. For investigators designing adjuvant clinical trials, this kind of information is critical when estimating the number of patients (power) required to address the question at hand. As adjuvant trials unfold, data monitoring committees must be sure that enough events are occurring in the study arms for meaningful comparisons to be made when the trial is fully accrued. The breath-taking expansion in knowledge of the cellular, metabolic, and molecular elements of RCC and its more than 31 distinct histologic subtypes leaves open the opportunity for new biomarkers to be added to previously studied prediction tools. However, simply replacing traditional prognostic factors with molecular biomarkers without improving predictive accuracy will not provide an effective advance. In the end, the desire to significantly improve the accuracy of these prediction tools may ultimately be limited by the molecular complexity and tumor heterogeneity characteristic of RCC.

**Paul Russo**, Professor of Urology, Attending Surgeon, Weill Cornell School of Medicine, Memorial Sloan Kettering Cancer Center, New York, NY

<https://doi.org/10.1016/j.urology.2019.09.045>  
UROLOGY 00: 6–7, 2019. © 2019 The Authors. Published by Elsevier Inc.

## AUTHOR REPLY

We thank the editor(s) for their comment on our study, in which we examine the performance of the Mayo Clinic risk stratification score (or Leibovich score)<sup>1</sup> in UK patients with localized clear cell renal cell carcinoma (RCC). Outcomes by metastasis-free survival among intermediate- or high-risk patients, according to the model, have improved over time. The implications of this for the clinic are important and readily apparent, since the model is widely employed to counsel patients, guide intensity of follow-up and for the design and powering of adjuvant trials. Our results mirror those of those of other recently reported data among US patients.<sup>2</sup>

The reasons behind this alteration in performance are likely multifactorial. As highlighted, progress in imaging, surgical technique and pathologic review that have taken place over the past several decades must be considered. A further, often overlooked, explanation may come from the fact that even our best current

prognostic markers (in this case tumor size, stage, grade, and presence or absence of necrosis) are still relatively poor at determining outcome at an individual patient level. The Mayo Clinic risk stratification score, among our contemporary cohort of patients, accounted for just 22% of the observed variance in metastasis-free survival. In other words, the majority of the observed variance remains unexplained by the model alone.

The molecular complexity and heterogeneity that characterizes RCC, as alluded to by the editor(s), remains unaccounted for in prognostic nomograms limited to gross pathology alone. If the goal of delivering truly personalized care to patients is to be met, robust biomarkers that can add value to and further refine existing riskstratification tools must be identified. We acknowledge the challenges in achieving this, but assays such as the 16-gene recurrence score,<sup>3,4</sup> for example, provide sufficient promise to suggest these challenges are surmountable.

Successful translation of biomarkers to the clinic has been hampered both by a lack of a clearly defined evaluative infrastructure as well as limited availability of high quality, clinically annotated, biobanks of sufficient size to allow meaningful late-stage assessment of biomarker performance, as we have recently highlighted.<sup>5</sup> Underpinning the current study, samples of serum, plasma, and urine were collected by strict standard operating procedures prior to surgery in all patients, including healthy controls, and in a subset of RCC patients (n = 200) longitudinally for up to 2 years. An archival tissue block was also collected. This multicenter UK RCC research tissue bank represents an important resource for prognostic and diagnostic biomarker validation studies in this disease and collaborative access is welcomed.

The use of prognostic models to individualize our approach to patient care remains integral to oncological practice. Model performance is, however, susceptible to alteration over time and periodic re-evaluation is necessary. Advances in -omic technologies are set to give us much more information to improve our ability to predict outcome, but at present we have to be very careful not to overestimate the accuracy and stability of prognostic indices.

**Naveen S. Vasudev, Peter J. Selby, Rosamonde E. Banks**, Leeds Institute of Medical Research at St James's, St. James's University Hospital, Leeds, UK

## References

1. Leibovich BC, Blute ML, Cheville JC, et al. Prediction of progression after radical nephrectomy for patients with clear cell renal cell carcinoma: a stratification tool for prospective clinical trials. *Cancer*. 2003;97:1663–1671.
2. Correa AF, Jegede O, Haas NB, et al. Predicting renal cancer recurrence: Defining limitations of existing prognostic models with prospective trial-based validation. *J Clin Oncol*. 2019;37:2062–2071.
3. Rini BI, Escudier B, Martini JF, et al. Validation of the 16-Gene recurrence score in patients with locoregional, high-risk renal cell carcinoma from a phase III trial of adjuvant sunitinib. *Clin Cancer Res*. 2018;24:4407–4415.
4. Rini B, Goddard A, Knezevic D, et al. A 16-gene assay to predict recurrence after surgery in localised renal cell carcinoma: development and validation studies. *Lancet Oncol*. 2015;16:676–685.
5. Selby PJ, Banks RE, Gregory W, et al. Methods for the evaluation of biomarkers in patients with kidney and liver diseases: multicentre research programme including ELUCIDATE RCT. Programme grants for applied research. *NIHR J Libr*. 2018.

<https://doi.org/10.1016/j.urology.2019.09.046>  
UROLOGY 00: 7, 2019. © 2019 The Authors. Published by Elsevier Inc.