

Evaluation of intake charge hydrogen enrichment in a heavy-duty diesel engine

Emad Monemian¹, Alasdair Cairns¹, Mark Gilmore², David Newman², Keith Scott³

Abstract

Concerns over CO₂ emissions and global warming continue to enforce the transport sector to reduce the fuel consumption of heavy duty diesel goods vehicles as one major contributor of CO₂. Such powertrain platforms look set to remain the dominant source of heavy duty vehicle propulsion for decades to come. The currently reported work was concerned with experimental evaluation of the potential to partially displace diesel with hydrogen fuel, which continues to attract attention as a potential longer term alternative fuel solution whether produced on-board or remotely via sustainable methods. The single cylinder engine adopted was of 2.0 litre capacity, with common rail diesel fuel injection and EGR typical of current production technology. The work involved fumigation of H₂ into the engine intake system at engine loads typically visited under real world driving conditions. Highest practical hydrogen substitution ratios increased indicated efficiency by up to 4.6% at 6bar IMEPn and 2.4% at 12bar IMEPn. In 6bar IMEPn, CO₂, CO and soot all reduced by 58%, 83% and 58% respectively while the corresponding reduction of these emissions in 12bar IMEPn, were 27%, 45% and 71% respectively toward diesel-only baseline. Under such conditions the use of a pre-injection prior to the main diesel injection was essential to control the heat release and pressure rise rates.

Key words:

Hydrogen, fumigation, diesel, heavy duty, CO₂

1. Introduction

The Paris Agreement¹ reached in December 2015 set the target of retaining the increase of earth average temperatures below 2°C above pre-industrial record. As a result, the commitment to challenge climate change has entered a critical phase as a binding and universal agreement on reducing Green House Gases (GHG), especially CO₂. Within the EU, controlling exhaust emissions

in the transport sector as the main contributor to CO₂ emissions (~20%) has forced manufacturers to additionally focus upon Heavy Duty (HD) vehicles, which account for a quarter of CO₂ emissions in this sector.²

¹ University of Nottingham, UK

² VN Automotive Ltd, UK

³ Newcastle University, UK

Corresponding author:

Emad Monemian, University of Nottingham, NG7 2RD
Email: emad.monemian@nottingham.ac.uk

Despite attaining relative high thermal efficiency, HD diesel engines have the major drawback of high engine-out soot and NO_x emissions. The Diesel Particulate Filter (DPF) has been developed to inhibit tailpipe soot emissions. However, in addition to high price, the DPF requires periodic enrichment of the fuel-air mixture to increase exhaust temperatures with the aim of removing accumulated soot from the filter (regeneration). This results in an additional fuel consumption penalty. Moreover, in contrast to passenger car vehicles, heavy-duty engines benefit less from measures such as electrification and hybridisation.³ In this regard, alternative low carbon fuels become particularly attractive due to high load and journey energy requirement of HD vehicles.

Many researchers have investigated methods for reduction of soot from such diesel engines. One efficient method can be classified as premixed Low Temperature Combustion (LTC). Utilising long ignition delay in these combustion modes permits sufficient mixing before combustion commencement resulting in reduced rich regions within combustion chamber and inhibiting soot formation.⁴ Nevertheless, lower combustion temperatures cause higher CO and HC emissions due to less complete combustion. This problem can be solved by substituting part of the diesel fuel with hydrogen. Non-existence of carbon content is a key benefit of burning hydrogen in IC engines, conducting to absence of CO, CO₂, uHC and PM exhaust emissions. This claim neglects any carbon entering the combustion chamber via the lubricant, but significant benefits remain. A critical hurdle is hydrogen supply and storage.

Approximately 95% of hydrogen is supplied from methane through a process known as 'steam reformation' which yields no overall benefit in CO₂ per equivalent mass of diesel. Another method involves electrolysis by renewable energy, which is a zero carbon route but is very costly. Alternatively, a novel possibility for hydrogen acquirement is via on-board steam reformation of part of the liquid hydrocarbon fuel, which improves overall system efficiency by about 5% via waste exhaust heat recovery.⁵

Storage is among the main areas for development of hydrogen power due to relevant safety issues and physical properties of hydrogen. Although distinct crystalline materials have been suggested for hydrogen storage, hydrides are used for storing significant quantities of hydrogen gas. In 2008, a hydrogen tank using an alloy found by Robin Gremaud could have 60% less weight than a battery pack.⁶ Besides, cryogenic tanks are other preferences which attempt to improve compatibility, expense and volumetric capacity. As an example of efforts in this area, BMW previously adopted cryogenic tanks for a 7 series mini-fleet to demonstrate improved driving range. The distribution of hydrogen for vehicles at filling stations needs remarkable infrastructure and huge investment. As of 2017, there are 35 public hydrogen stations in the US, with 32 of those located in California.⁷

Several automotive manufacturers including BMW, Ford and Mazda have attempted to utilise hydrogen as an alternative fuel for the IC engine. The BMW Hydrogen 7, powered by a hydrogen ICE, was developed by BMW between 2005 and 2007. This demonstrator adopted the same 6L V12 engine as the gasoline production model but with modifications to allow for dual fuel operation. Overall, the combustion system matched the efficiency values of a baseline turbo-diesel engine at a maximum of 42%.⁸

Elsewhere, Ford also developed the first vehicle in North America exclusively powered by a hydrogen fuelled IC engine (H2ICE). A Zetec based 2 litre H2ICE with a PFI system was integrated into a P2000 passenger sedan. CO₂ emissions were reduced to 0.4% that of the gasoline case, with metro cycle fuel economy improved by 18%.⁹ In later work, to achieve the stringent 2010 Phase II Heavy Duty emission standards, Ford re-designed a V10 Triton engine with aim of running a E-450 bus with hydrogen. Following this, the Ford Focus FCV was developed as an alternative hydrogen fuel cell vehicle.¹⁰ Such FCV vehicles are widely considered to offer considerable promise but only provided the current high costs of fuel cell technology can be

reduced in the longer term. Hence, in the medium term (at least), the IC engine remains dominant.

There have been numerous other attempts to adopt hydrogen in IC engines. Revolve UK modified the engine of a Ford Transit 2.2L Puma Diesel to operate with PFI injection of hydrogen as the main fuel. As the ignition source, diesel pilot injection was used to allow a permanent dual-fuel mode.¹¹ More recently, Alset developed a hybrid hydrogen-gasoline system that allowed the vehicle to use both fuels individually or at the same time. This technology was implemented on the Aston Martin Rapide S, which was the first vehicle completing the 24 hour Nürburgring race with hydrogen technology.¹²

The unique physical properties of hydrogen make it quite different from conventional fuels, as indicated in Table 1. Due to the very low density, hydrogen's volumetric energy density is small relative to that of diesel even in a compressed storage tank or in liquid state. Hence, a large volume is needed for storing sufficient hydrogen to perform a requisite driving range.¹³ This fact highlights the benefits of hydrogen production through on-board reformation.

Table 1. Physical properties of hydrogen vs. diesel¹⁴

Parameter	Hydrogen	Diesel
Density at 0 °C [kg/m ³]	0.089	830
Stoichiometric air/fuel ratio	34.3	14.5
LHV [MJ/kg]	120	42.5
Mixture Calorific value at $\phi=1$ [MJ/m ³]	3.2	3.83
Boiling Temperature [°C]	-253	180-360
Ignition Limits [Vol%, ϕ]	4-75%, 0.1-5.0	0.6-5.5%, 0.77-2.0
Min Ignition Energy at air ($\phi=1$) [mJ]	0.02	0.24
Autoignition Temperature [°C]	585	~250
Laminar Flame Speed at $\phi=1$ [m/s]	2.0	0.4-0.8
Carbon Content (Mass %)	0	86

According to Table 1, vast ignition limits (4-75% volumetric concentration in air), enables combustion over a wide domain of fuel-air mixtures including high efficiency lean operation. Furthermore, hydrogen has a relatively high flame speed that leads to higher efficiency.¹⁶ Hydrogen's

high diffusivity facilitates forming a uniform fuel-air mixture readily. This is also advantageous in the case of a hydrogen gas leakage, with rapid dispersion.¹³ Low ignition energy of hydrogen and high burning speed makes the mixture of diesel/hydrogen easier to ignite, hence, mitigating misfire and improving performance and emissions. Besides, by increasing the H/C ratio, hydrogen enhances the mixture's energy density at lean mixtures. However full load must be supplemented by some means of volumetric efficiency compensation, such as compound boosting.¹³

Comparing with diesel, hydrogen has meaningfully higher specific energy by mass (LHV) enabling a significant proportion of required diesel fuel be substituted by hydrogen in more cost effective way. However, diverse challenges remain including high in-cylinder pressure rise rates and the occurrence of pre-ignition and flashback within the intake system, particularly under heavy loads. The high flame speed of hydrogen is favourable in terms of knock.¹³ However, in-cylinder hotspots exposed during the intake stroke can serve as ignition sources for causing pre-ignition and flashback due to hydrogen's very low ignition energy. In addition, lubricant deposits or the spark-plug electrodes are also thought to initiate flashback.¹³

The injection strategy has considerable influence on the hydrogen mixture's homogeneity and stratification at ignition. Hydrogen direct injection (DI) could have further benefits rather than port fuel injection (PFI) due to providing more volumetric efficiency and avoiding irregular combustion like backfire.¹⁷ Comparing DI and PFI injection modes, researchers at Graz Technical University concluded that power output with H₂ DI was ~17% higher than that attained via port injection.¹⁵

The currently reported work has been concerned with the effects of dual fuel on a HD diesel engine, with supplementary hydrogen introduced into the intake in a "fumigation" approach. This approach fits well with two pathways for the reduction of CO₂ emissions; hydrogen electrolysed from renewable sources and on-board reformation.

2.2 Measurements

The AFR_{stoich} was specified based on ¹⁸ and global equivalence ratio (ϕ) was calculated using an algorithm explained in ¹⁹. The hydrogen fraction ratio (HF) was calculated basing on energy input, Eq. (1):

$$HF = \frac{\dot{m}_{hydrogen}LHV_{hydrogen}}{\dot{m}_{hydrogen}LHV_{hydrogen} + \dot{m}_{diesel}LHV_{diesel}} \quad (1)$$

Two NI DAQ cards were responsible of measured data acquisition. One was receiving encoder signals (with 0.25 CAD resolution) and the other one was used for slower data measurements. Meanwhile an in-house data acquisition program was used for real-time monitoring and recording the operational parameters. Kistler piezoelectric sensor along with an amplifier was used for in-cylinder pressure measurement. In addition, two piezo-resistive sensors measured intake and exhaust pressures in addition to K-type thermocouples for temperature measurement.

CA50, the CAD of 50% mass fraction burned (MFB) was assumed as the combustion timing. Cyclic variation was presented by COV_{IMEPn} (coefficient of variation for IMEPn) which was averaged over 500 sampled cycles.

Horiba gas analyser were used for exhaust gaseous emissions (NO_x , HC, CO and CO_2) sampling after the backpressure valve. EGR rate was calculated as the ratio of CO_2 concentration in the intake and exhaust. Soot emission was measured with an AVL 415SE smoke meter. The specific exhaust gas emissions and combustion efficiency (η_c) were calculated using the calculations defined in ²⁰, with wet basis correction of CO and NO_x emissions. The COV_{IMEPn} and average pressure rise rate (PRR) were limited to 5% and 20 bar/CAD, respectively.

2.3 Test conditions

As indicated in Table 3, two specific operating points were chosen for this work, both with 1200rpm engine speed. The first operating point is corresponding to 25% load in a typical HD truck (6bar IMEPn) representing operating point #7 of the

European Stationary Cycle (ESC13). The second operating point was equivalent to 50% load (12bar IMEPn) close to point #5 of the ESC13.²¹

Table 3. Engine Operating Conditions

Parameter	Operating Point 1	Operating Point 2
Engine Speed	1200 rpm	1200 rpm
Load (IMEPn)	6 bar	12 bar
Intake Air Temperature	309 K	318 K
Intake Pressure	125 kPa	190 kPa
Exhaust Pressure	135 kPa	200 kPa
EGR Rate	25%	25%
EGR Temperature	339 K	367 K
Rail Pressure	1250 bar	1400 bar
Diesel Injection Strategy	Pre-injection	Pre-injection
H2 Energy Fraction Range	0% to 65%	0% to 35%

Figure 3 denotes where the operating points (patterned circles) are placed over the operational map of a HD engine fitted to a truck. The selected test points are placed in a frequent residence area of a generic HD engine driving cycle. The corresponding baseline calibration is based on operating conditions optimised during the previous work in ²².

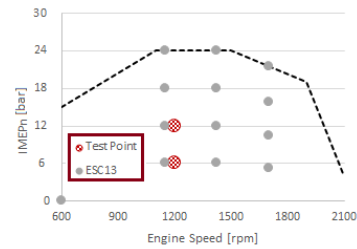


Figure 3. The selected test points with ESC13 points over the HD engine operational map.

3. Results

The objective was to achieve the best indicated efficiency-ISsoot trade-off with typical injection pressures and constant optimum injection timings (SOI). It is worth to note that in each operating point, the highest hydrogen fraction was limited by the maximum flow rate of mass flow controller (100 lit/min). In the following section the results of the maximum hydrogen energy fractions obtained ($HF = 65\%$ at A25 and $HF = 30\%$ at A50) are thoroughly reported in terms of combustion characteristics and exhaust emissions.

3.1 Combustion Analysis

Initially, a diesel-only test was performed with both single and pre-injection. As seen in Figure 4(a), pre-injection enabled reducing the heat release rate with lower pressure rise rate (PRR). The same phenomenon was observed during hydrogen fumigation while keeping the SOIs fixed (with lower main injection duration), as indicated in Figure 4(b). Pre-injection resulted in advancing SOC and reducing ignition delay.

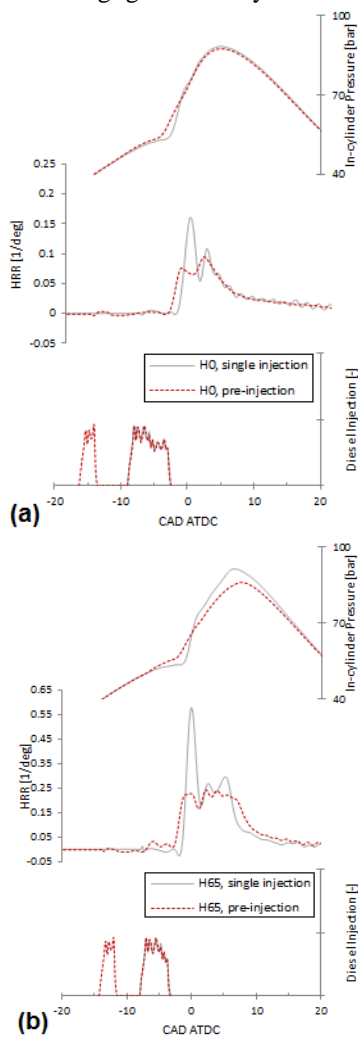


Figure 4. Use of pre-injection to reduce engine noise_A25 (a) diesel-only (0% H₂) (b) dual-fuel (65% H₂)

Comparing H65 with H0 in A25 single injection mode, the H65 has a significant higher HRR with shorter combustion duration. This shows one effect of hydrogen in accelerating the combustion process. As single injection resulted in very high in-cylinder pressure rise (> 20 bar/CAD) with remarkable higher HHR, the pre-injection strategy was chosen for all test cases with aim of reducing combustion noise.

The in-cylinder pressure and heat release profiles of two different HF are shown in Figure 5. While hydrogen addition shows no significant effect on pressure profile, the H65 heat release is more than H40 due to higher hydrogen concentration. In addition to shorter combustion duration, H65 has higher indicated efficiency ($\sim 6\%$) c.f. H40.

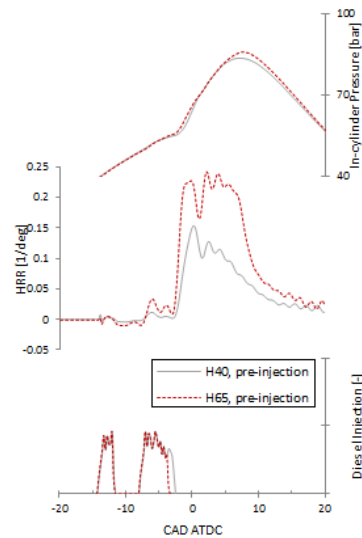


Figure 5. Effect of H₂ energy fraction using pre-injection_A25

Comparing H30 and H15 in A50 mode, hydrogen fraction increase resulted in higher peak in-cylinder pressure. Indeed, a separation emerges from the second stage of heat release for H30, as seen in Figure 6. A trend similar to A25, i.e. shorter combustion duration and higher indicated efficiency (in smaller scale) was seen in A50 as H30 has 3% higher indicated efficiency than H15. The reason for this is that due to faster combustion, less heat was transferred to cylinder wall.

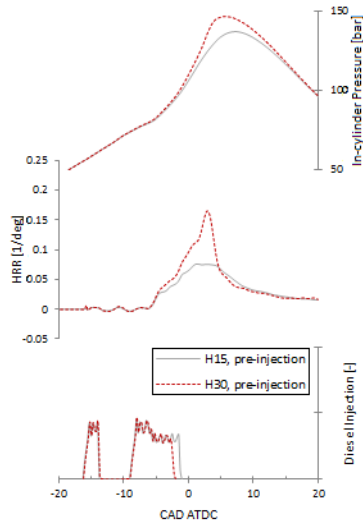


Figure 6. Effect of H2 energy fraction using pre-injection_A50

3.2 Combustion Characteristics

In this section, the effects of hydrogen fumigation in two test operating points over combustion and in-cylinder flow properties are laid out in Figure 7. Air-fuel ratio was fairly constant for both loads with leaner mixture at A25. A steep reduction in volumetric efficiency at both test points was observed by increasing H2 fraction due to displacement of intake air with hydrogen of low molecular weight but higher LHV. Cycle-to-cycle variability is fairly constant against the hydrogen fraction, although A25 illustrates higher COV but both loads show reasonable COV_IMEPn (< 5%).

The CA10-CA50 represents the premixed combustion part which initiates and dominates the whole combustion process. This parameter was pretty freezing in A25 but it was decreasing monotonically by rising H2 fraction. These trends at two loads are similar to combustion timing (CA50). Besides, combustion duration (CA10-CA90) for both loads shows descending with shorter duration for A25. A similar trend is reported in ²³. This reflects the provoking property of hydrogen combustion which is bold in the low load.

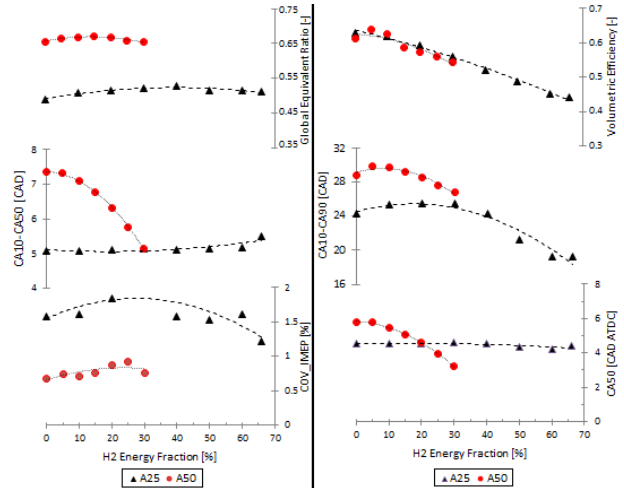


Figure 7. Combustion characteristics (A25 and A50)

3.3 Exhaust emissions and performance

The addition of H2 had an overall positive influence on CO₂ and most pollutant emissions, as illustrated in Figure 8. ISSoot, ISCO and ISCO₂ all decrease steeply with increasing hydrogen fraction for both loads due to H/C ratio reduction. As might be expected, ISNOx increases with higher mass flow of hydrogen, which accelerates combustion and leads to higher temperatures. The trends shown in Figure 8 are can be justified with NOx-equivalence ratio correlation presented in ²⁴. As average equivalence ration at A25 was near NOx rising threshold ($\phi = 0.5$), this resulted in relatively low increase of NOx emission (~26% c.f. diesel-only) in 6bar IMEPn. However, the NOx increase was significant at 12bar IMEPn which exceeded 56% as the equivalence ratio was higher ($\phi = 0.66$) at A50. A same NOx trend was observed by relevant work in ⁵.

One interesting characteristic with hydrogen fumigation was remaining the ISHC fairly reluctant. The emission alteration for highest hydrogen

fractions in two test points regarding the diesel-only baseline is presented in Table 4.

Table 4. Emissions alteration of highest HF to diesel baseline

Test Point	ISoot	ISNOx	ISCO	ISHC	ISCO2
A25	- 58%	+ 26%	- 83%	+ 11%	- 58%
A50	- 71%	+ 56%	- 45%	- 21%	- 27%

Adding small amounts of hydrogen led to slight reduction in indicated efficiency, potentially associated with reduced ratio of specific heats due to displacement of air. The reason for initial drop in efficiency could be due to ‘hydrogen slip’ (incomplete combustion of hydrogen) as claimed in ⁵. However, at higher substitution ratio the faster combustion of hydrogen outweighed this effect and led to improved efficiency especially after hydrogen’s lower flammability limit (LFL = 4% Vol). At A25, η_{ind} has a detrimental effect in the small hydrogen fractions until HF = 30%, where after efficiency starts to rise significantly until η_{ind} = 46.5%. For A50, elevated η_{ind} starts to recover at HF = 10% and reaches a peak of 46.4% at the highest attainable HF.

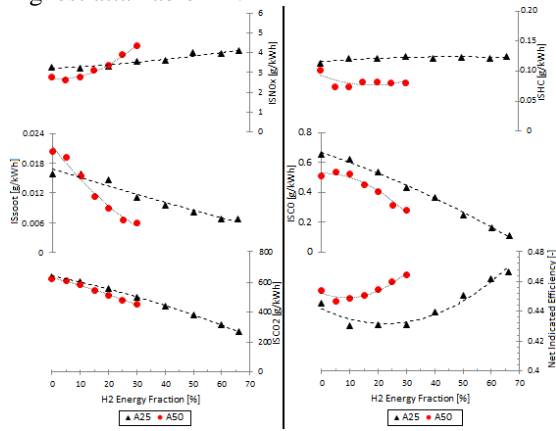


Figure 8. Exhaust Emissions and Performance (A25 and A50)

4. Conclusion

The work was concerned with experimental study of the effects of hydrogen fumigation on HD diesel engine combustion, performance, fuel consumption and emissions. The experiments were undertaken at

two part load sites of high residency on the drive cycle, with engine speed fixed at 1200rpm but engine output set to 25% and 50% load. At each site a relatively wide sweep of hydrogen addition was performed. The following conclusions were made:

1. Diesel/hydrogen dual-fuel combustion with fixed SOI resulted in relatively low increase of NOx emission (~26%) in 6bar IMEPn. However, this increase was significant at 12bar IMEPn which exceeded 56%.
2. Highest hydrogen substitution ratios increased indicated efficiency by up to 4.6% at 6bar IMEPn and 2.4% at 12bar IMEPn.
3. Higher hydrogen energy fractions required for optimum SOI led to the need to retard the diesel injection timing. The use of a pre-injection prior to the main diesel injection was essential to control heat release and pressure rise rates.
4. CO2, CO and soot all reduced by 58%, 83% and 58% respectively in 6bar IMEPn.
5. In 12bar IMEPn, reduction of CO2, CO and soot were 27%, 45% and 71% respectively toward diesel-only baseline.
6. According to Euro VI emission regulation, both CO and HC could fully meet the limits. Smoke met limits partially i.e. at higher H2 energy fraction and NOx could meet the 0.4 g/kWh limit of Euro VI with NOx after-treatment of 90% conversion efficiency.

Funding

This work was supported by VN Automotive Ltd. The support of the EPSRC (Grant EP/N50841X/1) is also gratefully acknowledged.

Acknowledgement

The authors would like to thank the technicians Andrew Selway and Eamon Wyse for their assistance in commissioning the test rig.

Declaration of conflict of interest

The authors declare that there is no conflict of interest.

References

- Adoption of the Paris Agreement, United Nations, Framework Convention on Climate Change, FCCC/CP/2015/L.9/Rev.1, 12 Dec 2015
- “Road transport: Reducing CO₂ emissions from vehicles”, European Commission, Retrieved 2016-07-22.
- Reitz RD. Directions in internal combustion engine research. *Combust Flame* 2013; 160:1–8. <http://dx.doi.org/10.1016/j.combustflame.2012.11.002>
- Rolf D. Reitz, Ganesh Duraisamy “Review of high efficiency and clean reactivity controlled compression ignition (RCCI) combustion in internal combustion engines”, *Progress in Energy and Combustion Science* 46 (2015) 12-71, 2015
- Morgan, R., Atkins, P., Atkins, A., Lenartowicz, C. et al., "Effect of Hydrogen Fumigation in a Dual Fueled Heavy Duty Engine", SAE Technical Paper 2015-24-2457, 2015, doi:10.4271/2015-24-2457.
- “Light Weight Hydrogen 'Tank' Could Fuel Hydrogen Economy”, *sciencedaily.com*, 2008-11-05.
- Alternative Fueling Station Counts by State, Alternative Fuels Data Centre, accessed in 2017-06-12
- https://en.wikipedia.org/wiki/BMW_Hydrogen_7
- S. Szwabowski, S. Hashemi, W. Stockhausen, R. Natkin, L. Reams, D. Kabat and C. Potts “Ford Hydrogen Engine Powered P2000 Vehicle”, SAE paper 2002-01-0243, 2002.
- R. J. Natkin, A. R. Denlinger, M. A. Younkins, A. Z. Weimer, S. Hashemi and A. T. Vaught “Ford 6.8L Hydrogen IC Engine for the E-450 Shuttle Van”, SAE paper 2007-01-4096, 2007.
- “Bi-fuel hydrogen-diesel conversion”, Revolve UK, retrieved 2016-09-15
<http://www.revolve.co.uk/projects/bifueldieselconversion>
- Alset Global “Our Solutions”, retrieved 2016.09.18
<http://alset.at/our-solutions/>
- “Hydrogen Fuel Cell Engines and Related Technologies”, College of the Desert, Dec 2001
- Periodic Table of Elements - Hydrogen:
<http://environmentalchemistry.com/yogi/periodic/H.html>
- Andreas Wimmer, Thomas Wallner, Jürgen Ringler and Falk Gerbig “H₂-Direct Injection – A Highly Promising Combustion Concept”, SAE paper 2005-01-0108, 2005.
- NASA Technical Note, May 1977, "Emissions and Total Energy Consumption of a Multicylinder Piston Engine Running on Gasoline and a Hydrogen-Gasoline Mixture"
- Arash Hamzehloo, Pavlos Aleiferis “Numerical Modelling of Mixture Formation and Combustion in DISI Hydrogen Engines with Various Injection Strategies”, SAE paper 2014-01-2577, 2014.
- Heywood JB “Internal combustion engine fundamentals” 1st edition, McGraw-Hill, 1988
- Silvis WM, “An algorithm for calculating the air/fuel ratio from exhaust emissions”, SAE Paper 970514, 1979. <http://dx.doi.org/10.4271/970514>
- Economic Commission for Europe of the United Nations (UN/ECE). Regulation No 49 – uniform provisions concerning the measures to be taken against the emission of gaseous and particulate pollutants from compression-ignition engines and positive ignition engines for use in vehicles. Off J Eur Union 2013.
- DieselNet, “Emissions Standards: Europe: Heavy-Duty Truck and Bus Engines”, accessed Sep 2016 <https://www.dieselnat.com/standards/eu/hd.php>,
- Vinicius B. Pedrozo et al., “Experimental analysis of ethanol dual-fuel combustion in a heavy-duty diesel engine: An optimisation at low load”, *Applied Energy* 165 (2016) 166–182, 2016 <http://dx.doi.org/10.1016/j.apenergy.2015.12.052>
- A.E. Dhole, R.B. Yarasu, D.B. Lata, “Investigations on the combustion duration and ignition delay period of a dual fuel diesel engine with hydrogen and producer gas as secondary fuels”, *Applied Thermal Engineering* 107 (2016) 524–532, 2016 <http://dx.doi.org/10.1016/j.applthermaleng.2016.06.151>
- S. Verhelsta and T. Wallnerb, “Hydrogen-Fueled Internal Combustion Engines”, *Progress in Energy and Combustion Science*, 2009 <http://hdl.handle.net/1854/LU-818298>

Nomenclature

AFR _{stoich}	Stoichiometric Air-Fuel Ratio
CAD	Crank Angle Degree
COV	Coefficient of Variation
DAQ	Data Acquisition
DI	Direct Injection
DPF	Diesel Particulate Filter
ECU	Engine Control Unit
EGR	Exhaust Gas Recirculation
ESC	European Stationary Cycle
FCV	Fuel Cell Vehicle
GHG	Green House Gases
HD	Heavy Duty
HF	Hydrogen Fraction
HRR	Heat Release Net
ICE	Internal Combustion Engine
IMEP _n	net Indicated Mean Effective Pressure
IS _{soot}	Indicated Specific soot
LFL	Lower Flammability Limit
LGV	Large Goods Vehicle
LHV	Lower Heating Value
LTC	Low Temperature Combustion
MFB	Mass Fraction Burned
PFI	Port Fuel Injection
PM	Particulate Matter
PRR	Pressure Rise Rate
SOI	Start of Injection
uHC	Unburned Hydrocarbon
φ	Equivalence Ratio
η _c	Combustion efficiency
η _{ind}	Indicated Efficiency