

The SLUGGS survey: chromodynamical modelling of the lenticular galaxy NGC 1023

Arianna Cortesi,^{1★} Ana L. Chies-Santos,^{1,2,3} Vincenzo Pota,⁴ Caroline Foster,⁵ Lodovico Coccato,^{6★} Claudia Mendes de Oliveira,^{1★} Duncan A. Forbes,⁷ Michael M. Merrifield,³ Steven P. Bamford,³ Aaron J. Romanowsky,^{4,8} Jean P. Brodie,⁴ Sreeja S. Kartha,⁷ Adebisola B. Alabi,⁷ Robert N. Proctor¹ and Andres Almeida⁹

¹*Departamento de Astronomia, Instituto de Astronomia, Geofísica e Ciências Atmosféricas da USP, Cidade Universitária, CEP:05508900 Sao Paulo, SP, Brazil*

²*Departamento de Astronomia, Instituto de Física, Universidade Federal do Rio Grande do Sul, Porto Alegre, RS 90040-060, Brazil*

³*School of Physics and Astronomy, The University of Nottingham, University Park, Nottingham NG7 2RD, UK*

⁴*University of California Observatories, 1156 High Street, Santa Cruz, CA 95064, USA*

⁵*Australian Astronomical Observatory, PO Box 915, North Ryde, NSW 1670, Australia*

⁶*European Southern Observatory, Karl-Schwarzschild-Strae 2, D-85748 Garching bei Muenchen, Germany*

⁷*Centre for Astrophysics and Supercomputing, Swinburne University, Hawthorn, VIC 3122, Australia*

⁸*Department of Physics and Astronomy, San José State University, One Washington Square, San Jose, CA 95192, USA*

⁹*Department of Physics and Astronomy, Universidad de La Serena, Cisternas, 1200 La Serena, Chile*

Accepted 2015 November 20. Received 2015 November 13; in original form 2015 July 14

ABSTRACT

Globular clusters (GCs) can be considered discrete, long-lived, dynamical tracers that retain crucial information about the assembly history of their parent galaxy. In this paper, we present a new catalogue of GC velocities and colours for the lenticular galaxy NGC 1023, we study their kinematics and spatial distribution, in comparison with the underlying stellar kinematics and surface brightness profile, and we test a new method for studying GC properties. Specifically, we decompose the galaxy light into its spheroid (assumed to represent the bulge+halo components) and disc components and use it to assign to each GC a probability of belonging to one of the two components. Then we model the galaxy kinematics, assuming a disc and spheroidal component, using planetary nebulae and integrated stellar light. We use this kinematic model and the probability previously obtained from the photometry to recalculate for each GC its likelihood of being associated with the disc, the spheroid, or neither. We find that the reddest GCs are likely to be associated with the disc, as found for faint fuzzies in this same galaxy, suggesting that the disc of this S0 galaxy originated at $z \simeq 2$. The majority of blue GCs are found likely to be associated with the spheroidal (hot) component. The method also allows us to identify objects that are unlikely to be in equilibrium with the system. In NGC 1023 some of the rejected GCs form a substructure in phase space that is connected with NGC 1023 companion galaxy.

Key words: galaxies: elliptical and lenticular, cD – galaxies: individual: NGC 1023 – galaxies: kinematics and dynamics.

1 INTRODUCTION

Understanding the origin of lenticular galaxies and how closely related they are to spiral galaxies is still a challenge for contemporary

astrophysics. A wealth of evolutionary evidence links S0 galaxies to spirals. The morphology–density relation (Dressler et al. 1997) shows that while the number of spiral galaxies decreases towards the centre of a cluster, the number of S0 galaxies increases. It has also been shown that S0 galaxies are more common at the present epoch than at higher redshifts, while the inverse is true for spiral galaxies (Dressler & Sandage 1983; Desai et al. 2007). The mechanism responsible for transforming a spiral into an S0 galaxy

* E-mail: aricorte@gmail.com (AC); lcoccat@eso.org (LC); claudia.oliveira@iag.usp.br (CMdO)

has to stop star formation in the disc and enhance the spheroidal component (Dressler & Sandage 1983). Interestingly, S0 galaxies are found in all environments, from high-density clusters to the field, allowing for a variety of evolutionary paths (gas stripping, strangulation, harassment, minor mergers, pestering, secular evolution) and raising the question of whether S0 galaxies are a unique class, or a collection of objects whose formation mechanisms are environment dependent (Gunn & Gott 1972; Byrd & Valtonen 1990; Quilis, Moore & Bower 2000; Bournaud, Jog & Combes 2005; Aragón-Salamanca 2008; Kronberger et al. 2008). Recent work, moreover, suggests the possibility of creating S0s through major mergers under specific initial conditions (Borlaff et al. 2014; Naab et al. 2014).

The past history of a galaxy is imprinted in its faint outer regions, where we can find signs of minor mergers, traces of accretion, or of a gentle passive fading. In general, it is difficult to study the kinematics and the stellar populations of early-type galaxies at large radii due to the absence of an undisturbed H I disc and the low surface brightness of the stellar component at large radii. Recently, this last issue has been solved by using discrete kinematic tracers, which are detectable at large radii. Large data sets are becoming available from globular clusters (GCs; Pota et al. 2013; Brodie et al. 2014), planetary nebulae (PNe; see e.g. Coccato et al. 2009; Cortesi et al. 2013a) and integrated stellar light (see e.g. Norris et al. 2008; Foster et al. 2011; Brodie et al. 2014). Moreover, GCs provide us with a unique tool for understanding the chemodynamical properties of their host galaxies. They tend to be old ($\gtrsim 10$ Gyr) and are the closest examples we have to simple stellar populations (Brodie & Strader 2006). GCs are ubiquitous across a range of galaxy types and luminosities, and can be studied up to distances of ~ 100 Mpc (see Harris 2010) and beyond (Alamo-Martínez et al. 2013). They form a bimodal distribution in optical colours that is often interpreted as evidence for metallicity bimodality (Brodie & Strader 2006; Brodie et al. 2012; Cantiello et al. 2014; for an alternative view see Yoon, Yi & Lee 2006; Chies-Santos et al. 2012).

In general, blue GCs tend to reside in the galaxy halo, while red GCs are associated with the metal-rich stellar population, i.e. the overall stellar population in elliptical galaxies (Pota et al. 2013) and the bulge or the thick disc of spiral galaxies (Minniti 1995; Forbes, Brodie & Larsen 2001). Studying the properties of the GC subpopulations in lenticular galaxies can help constrain S0 formation histories. If S0 galaxies are gently quenched spiral galaxies, we expect their GC subpopulations to have the same properties as in spiral galaxies, only their specific frequency would be higher, since the total number of GCs would be the same in S0s and spirals, while spiral galaxies would be brighter (Aragón-Salamanca, Bedregal & Merrifield 2006). In contrast, violent events, such as mergers or the accretion of small companions, would alter the initial distribution of GC in the galaxies (Kruijssen et al. 2012). Forbes et al. (2012) studied the red GC system in the lenticular galaxy NGC 2768, finding that the red GCs share the same properties as PNe belonging to the spheroidal component of the galaxy. This suggests that, in this S0, the red GCs behave as in spiral galaxies. However this work is based on only a colour selection of the GC subpopulations.

In an attempt to study the GC subpopulations in S0 galaxies to investigate their formation histories, we present a new method which uses the galaxy photometry and kinematics, as recovered from PNe and integrated stellar light, to obtain the likelihood for each GC of belonging to the spheroid or the disc of a galaxy. This method ensures a physically meaningful separation, based on the kinematics rather than the colour, and allows us to trace streams and substructures. Subsequently, we construct a chromodynamical

model of the galaxy, where we correlate the GC probability of belonging to one of the galaxy components with its colour. Our final goal is to understand the build-up of the blue and the red GC subpopulations in light of the hierarchical merging framework of galaxy formation and shed light on the possibility of using GCs as probes of galaxy formation. In particular in this paper we study the lenticular galaxy NGC 1023. A number of studies have been carried out on this galaxy (Larsen & Brodie 2000; Cortesi et al. 2011; Chies-Santos et al. 2013; Forbes et al. 2014; and many others) and it is an ideal case for testing this method. A new catalogue of GC positions and velocities has been obtained for this work by the SAGES Legacy Unifying Globulars and GalaxieS (SLUGGS) team (see below) and is published in this paper.

The paper is structured as follows. In Section 2 we present the data we employ for our analysis. The method is presented in Section 3, and the results are presented in Section 4. In Section 5 we discuss our findings in the context of galaxy evolution. Summary and conclusion are presented in Section 6.

2 DATA

In this paper we study three different types of kinematics tracers: PNe, GCs and integrated stellar light. In particular, we test a new method where we use the galaxy kinematics as recovered using PNe and stars to define a likelihood for a given GC to belong to the disc or the spheroid of the galaxy. All the data have been published previously with the exception of the GCs that are published here. In the present section we briefly describe the detection techniques and data reduction analysis of the three different data sets.

Fig. 1 shows the spatial distribution of PNe (small, green, open circles), GCs (large, magenta circles) and integrated stellar light (filled, orange squares) over a Digitized Sky Survey (DSS) image of NGC 1023, with the *Hubble Space Telescope* (*HST*) field-of-view outlined in black. Note the large radial extent that such tracers cover, especially PNe and GCs that reach out to ~ 7.46 disc scale length, R_d , with $R_d \simeq 67$ arcsec (Cortesi et al. 2013b). East of the galaxy it is possible to see an excess of light at the location of the companion galaxy NGC 1023A. We have adopted a distance for the galaxy of 11.1 Mpc (Brodie et al. 2014).

2.1 Globular clusters

GC data were acquired as part of the SLUGGS survey¹ (Brodie et al. 2014). GC candidates were identified in *HST*/Advanced Camera for Surveys (ACS) imaging in *g* and *z* filters, as described in Forbes et al. (2014). The latter was supplemented with archival Canada–France–Hawaii Telescope (CFHT) data in *g* and *i* from Kartha et al. (2014) to target GC candidates outside the *HST* footprint. For both data sets, GC candidates were selected based on their location in the colour–magnitude diagram and, for *HST* imaging only, based on their partially resolved half-light radius R_e . We adopt the classification of Norris et al. (2014), for which GCs are fainter than -10 mag in *g* band and ultracompact dwarfs (UCDs) are brighter than -10 mag. The radius definitions to divide GCs from faint fuzzies (FFs; Larsen & Brodie 2000) are somewhat arbitrary, in this work we follow the definition of Forbes et al. (2014), for which FFs have $R_e > 7$ pc and GCs have $R_e < 7$ pc. The total number of GCs recovered using only photometry (*photometric GCs*) is 360.

¹ <http://sluggs.swin.edu.au/Start.html>

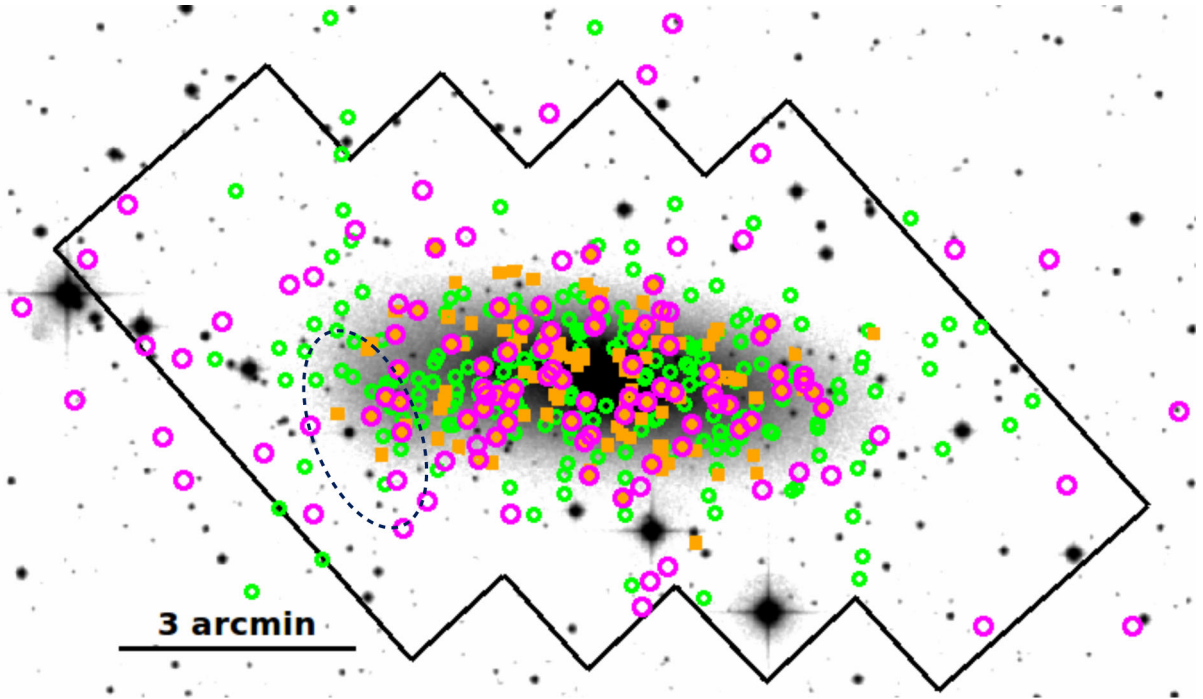


Figure 1. Spatial distribution of the spectroscopically confirmed tracers around NGC 1023. The image is from DSS (about 20×9 arcmin² across), with the *HST* field-of-view outlined in black. Symbols are: diffuse starlight (orange boxes); PNe (small, green, open circles); GCs (large, magenta, open circles). The location of the companion galaxy is shown as a dotted ellipse, obtained by ellipse fitting of a *B*-band image of the galaxy, the companion galaxy has bluer colours than the main galaxy (Noordermeer et al. 2008). North is up, east is left.

Table 1. Summary of the observation details for NGC 1023.

Mask	Date	Exposure time
N1023_1	2011-11-31	$1800 \times 1, 1799 \times 1, 1799 \times 1$
N1023_2	2011-11-31	$1800 \times 2, 1799 \times 1$
N1023_3	2012-01-15	$1800 \times 4, 1639 \times 1$
N1023_4	2013-01-16	$1800 \times 2, 1320 \times 1$
N1023_3	2013-09-29	1800×4

Spectroscopic follow-up of a subsample of GC candidates was performed with the multi-object spectrograph Keck/Deep Imaging Multi-Object Spectrograph (DEIMOS). A total of four DEIMOS masks were observed, see Table 1. Two masks were aligned along the major axis of the galaxy, and two along the minor axis. Priority was given to bright and partially resolved GCs in *HST*, whereas remaining slits were assigned to unresolved objects outside the *HST* field-of-view. The reader should see Pota et al. (2013) for a detailed description of the data reduction, while we summarize here the main points of the data analysis. We measure the redshift of the calcium triplet (CaT) lines at 8498, 8542 and 8662 Å. This was performed by cross-correlating 11 template spectra of Galactic stars spanning a wide range of metallicities, with the actual GC spectrum. Fig. 1 shows that most of the confirmed GCs turned out to be inside the *HST* field-of-view. This is because the GC system of NGC 1023 is ~ 6 arcmin in diameter and it is elongated along the photometric major axis (Kartha et al. 2014) as confirmed by the paucity of GCs along the galaxy minor axis.

We adopt the *HST* catalogue as our primary photometric catalogue. We convert the CFHT ($g - i$) colours into *HST* ($g - z$) colours by matching the objects in common between the two data sets. We find $(g - z) = 0.39 + 0.59(g - i)$ and we apply this conversion to the objects with ground-based photometry only. The

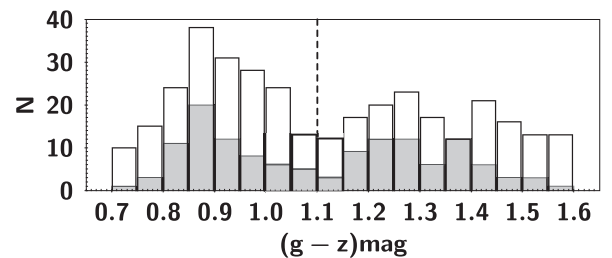


Figure 2. GC colour bimodality. Histogram showing the distribution of the ($g - z$) colour of the GC population, open histogram, and of the spectroscopically confirmed sample, filled histogram. The dashed line shows the separation between blue and red GCs.

($g - z$) GC colour distribution is bimodal, see Fig. 2, with a colour separation between blue and red GCs set at ($g - z$) = 1.1 mag (Forbes et al. 2014).

The spectra for 115 candidates belonging to the NGC 1023 systems have been obtained and the velocities have been confirmed by two independent observers. For 96 of the 115 detections, which fall in the fields observed with *HST*, we have measured the effective radius, R_e . Following Forbes et al. (2014), we identify as FFs objects with $R_e > 7$ pc and as UCDs objects with $M_g < -10$ mag, see Fig. 3. In Fig. 3, we also show the location of the FFs observed in this galaxy by Larsen & Brodie (2000), which will be used in the following sections to complete our FFs catalogue. The remaining 19 objects with CFHT photometry are also classified as GCs, since they have a magnitude $M_g > -10$ mag in *g* band and lie in the outskirts of the galaxy, while FFs are generally found close to the galaxy centre. In total we have 104 GCs, 63 blue and 41 red (*spectroscopic GCs*). Following Noordermeer et al. (2008) we have assigned six GCs to the companion galaxy using the luminosity ratio between

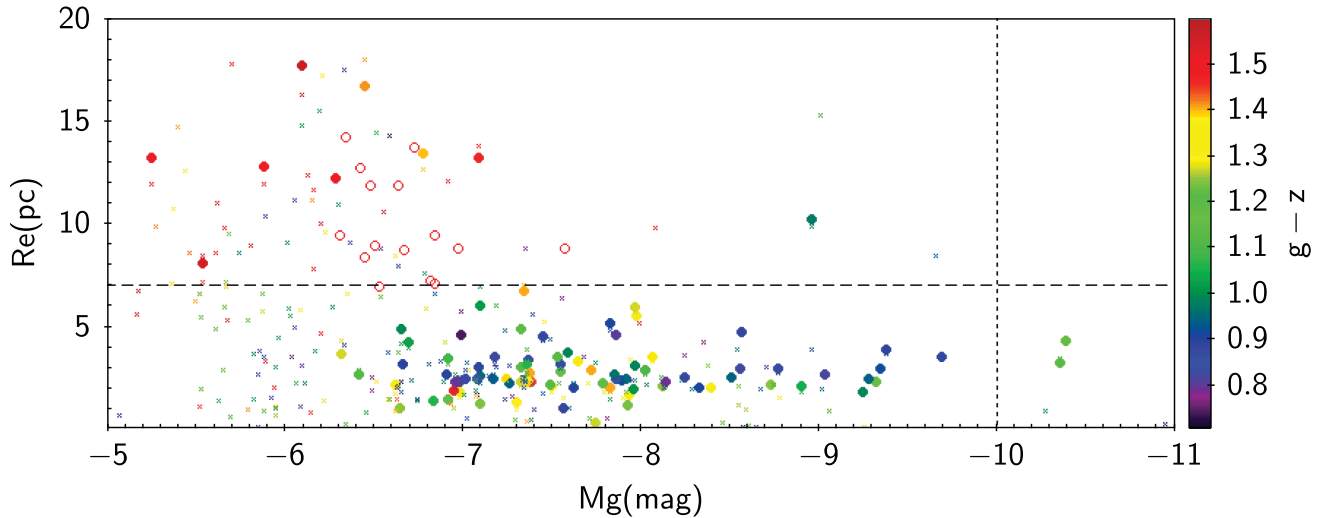


Figure 3. Classification of the spectroscopically confirmed objects. Effective radius versus absolute magnitude diagram for the objects published in this paper (big filled circles), colour coded according to their $g - z$ colour and for the FFs from the literature (Larsen & Brodie 2000). For comparison we plot the objects from the photometric catalogue, as crosses, used to select the spectroscopic candidates, also colour coded according to their $g - z$ colour. The absolute magnitude was obtained by subtracting the apparent magnitude from the distance modulus value found in the NASA/IPAC Extragalactic Database (NED). The horizontal line at $R_e = 7$ pc marks the division between GCs and FFs, and the vertical line at $M_g = -10$ mag shows the objects identified as UCDs.

the two galaxies and requiring that the radial velocity of the object has a maximum difference with respect to the systemic velocity of NGC 1023A of $|\Delta V| \leq 100 \text{ km s}^{-1}$. The companion galaxy GCs are three red and three blue.

2.2 Stellar data

The integrated stellar light individual data points were presented in Arnold et al. (2014) and the integrated stellar light data are taken from the kinemetry fits presented in Foster et al. (2015), they were extracted using the Stellar Kinematics using Multiple Slits (SKiMS) technique (Foster et al. 2013).

The method used to extract integrated kinematic information of the underlying galaxy starlight from a multislit spectrograph was first developed by Norris et al. (2008) and Proctor et al. (2009).

We use the individual data points to assign a probability of belonging to the companion galaxy, following the same procedure as for PNe and GCs. We find that 90 per cent of the observed stellar light is associated with the main galaxy. We use the binned kinemetry fits to compare the stellar kinematics with the kinematics of PNe and GCs, see Fig. 5.

2.3 Planetary nebulae

The PNe catalogue was obtained using the Planetary Nebulae Spectrograph (PNS; Douglas et al. 2002). It was published in Noordermeer et al. (2008) and information on the data reduction and completeness correction can be found in Cortesi et al. (2013a): where 203 PNe were detected, 20 of which are associated with the companion galaxy N1023A. The PNe trace the galaxy light profile well, once corrected for incompleteness in the centre. When fitting with a tilted disc model the PNe present a strange velocity profile, with decreasing rotation velocity and increasing values of the tangential components of the random motions (Noordermeer et al. 2008; Cortesi et al. 2011). This was explained as a contamination of the disc kinematics by spheroid PNe. When this effect is properly

accounted for, by assigning a probability to each PN of belonging to the spheroid or the disc, the derived kinematic presents a spiral-like behaviour, with a flat rotation curve and decreasing dispersion velocity in the disc.

3 ANALYSIS

The colours of GCs are believed to be connected to the galaxy formation history. One scenario (Forbes, Brodie & Grillmair 1997) has blue, metal-poor GCs formed during the collapse of the protogalactic cloud and associated with the galaxy halo. Red, metal-rich, GCs on the other hand might have been formed during a starburst that created the galaxy spheroid. Alternatively, Shapiro, Genzel & Förster Schreiber (2010) suggest that red GCs might have formed in super star-forming clumps at $z \simeq 2$ during the gas-rich phase of galaxy evolution (see also Forbes et al. 2015). These clumps would have migrated towards the centre of the host galaxy, transporting GCs towards the protobulge. Some of the GCs would have been stripped from the migrating clumps and become part of the newly born thick disc. Both those subpopulations would be old (≥ 10 Gyr). In this simple scenario we expect to find a correlation between colour and kinematics of GCs, i.e. red GCs should share the same kinematics as spheroid or thick disc stars (Forbes et al. 2012) and blue GCs would trace the halo kinematics. Traditionally, this analysis has been performed dividing GCs according to their colour and then studying their kinematics (Shapiro et al. 2010; Forbes et al. 2012). In Section 3.1 we reproduce such an analysis. In Section 3.2 we describe the galaxy model obtained from PNe and integrated stellar light. In Section 3.3 we present a new method that, instead, uses the GC kinematics to divide them into different subpopulations and then study their properties. This method assumes that the galaxy halo is an extension of the galaxy bulge. We call the bulge+halo components ‘the galaxy spheroid’, i.e. the spherically symmetric component dominated by random motion. This approximation could be relaxed when more data for the galaxy outskirts become available.

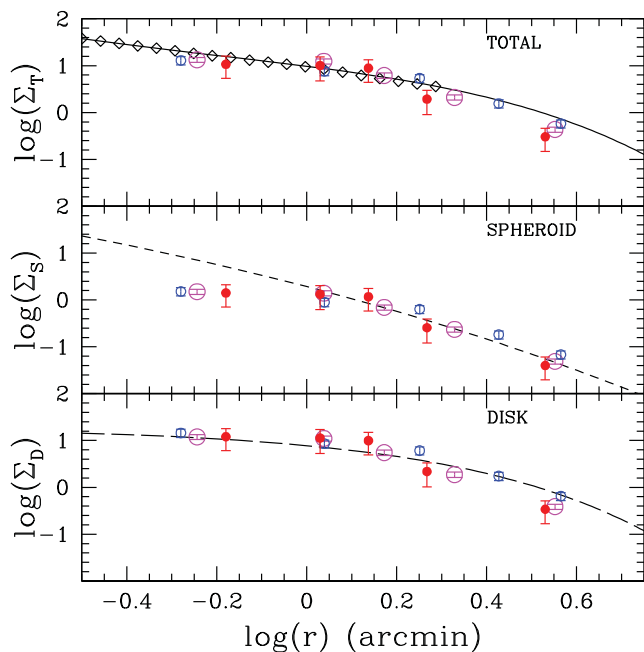


Figure 4. Comparison of the galaxy surface brightness profile with the number density profile of the GCs. Top panel: the number density profile of photometric GCs in comparison with the galaxy R -band surface brightness from ellipse fitting (black diamonds) and the galaxy light model from GALFIT (continuous black line). The number density profiles of the total GC population (large, magenta circles), red GCs (small, red, filled circles) and blue GCs (blue, open circles) are shown. Middle panel: comparison is made with the spheroid model from GALFIT. Bottom panel: comparison is made with the GALFIT disc model. In all panels, the data points have been shifted arbitrarily on the y -axis in order to match the galaxy light profile at $R = 0.2$ arcmin. GCs follow the total light profile very well, the disc dominates the galaxy light. There is no visible difference between the two GC subpopulations. GCs might have been destroyed towards the galaxy centre or not been observed due to the bright galaxy background, therefore, their distribution might be incomplete in the centre.

3.1 Radial distribution and kinematics of the red and blue GCs

As a first analysis, we compare the one-dimensional radial distribution of GCs with the galaxy starlight: if GCs follow the underlying stellar population, then, to within a normalization factor, the

two might be expected to show the same profile. Fig. 4 shows the comparison of the total, blue and red *photometric GC* number densities (magenta, blue and red circles, respectively) against the total, spheroid and disc surface brightness (upper panel, middle panel and low panel, respectively), as modelled running GALFIT on an R -band image of the galaxy (Cortesi et al. 2011). The recovered parameters are disc total absolute magnitude 7.02 mag, disc scale length 59.08 arcsec, disc axis ratio 0.26 and disc position angle $84^{\circ}12'$; for the spheroid we estimated the total absolute magnitude to be 6.9 mag, effective radius 17.86 arcsec, Sérsic index 4, axis ratio 0.75 and position angle $75^{\circ}59'$. The spheroid over total light fraction is 0.53. The GC number density has been obtained by separating the objects belonging to the main galaxy, NGC 1023, from the objects associated with the companion galaxy, NGC 1023A, using a light weighted probability (Noordermeer et al. 2008). First, we bin the GCs of NGC 1023 into elliptical annuli, going outward in radius, using the ellipticity obtained from a non-parametric isophotal analysis of the R -band image of the galaxy. The total number of GCs in each bin is then divided by the bin area. In Fig. 4, the GC total, red and blue number densities have been shifted in the y -axis to match the modelled surface brightness profile. The total model, black continuous line in the upper panel of Fig. 4, describes well the light profile as obtained with an ellipse fitting (black diamonds) of the same R -band image. The total GC number density follows the total light profile, supporting the idea that they are associated with the galaxy. This galaxy light profile is dominated by the disc component and the GCs seem to follow the disc light profile. Kartha et al. (2014) found that the distribution of red and blue GCs in this galaxy is elongated along the major axis, resembling the disc isophotes, supporting this result. Nevertheless the spheroid profile would provide a good fit for the outer GCs, suggesting that red and blue GCs belong to both the galaxy components.

A second clue comes from the study of the kinematics of the GC system as a whole, and of the blue and red subpopulations. Fig. 5 shows the GC two-dimensional smoothed velocity fields, using an adaptive Gaussian kernel smoothing (Coccatto et al. 2009), for the total, red and blue sample (left-hand, middle and right-hand panel, respectively). Rotation with a maximum velocity of 180 km s^{-1} is clear in the total GC population as a whole, and for the red and the blue subpopulations separately. A similar result was found by Proctor et al. (2008), studying the GC system of the spiral galaxy NGC 2683. The Milky Way (MW) red GCs also show large systemic rotation and were first associated with the old

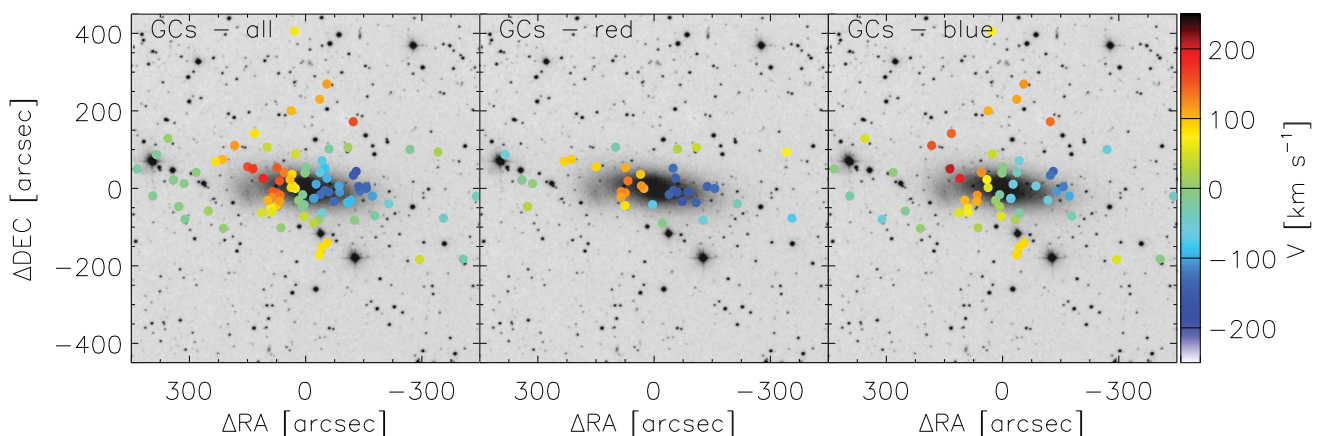


Figure 5. 2D velocity maps of the GCs. Smoothed GC velocity field overplotted on a DSS image of NGC 1023, left, for the red subpopulation, centre, and the blue subpopulation, right. Rotation $\simeq 180 \text{ km s}^{-1}$ is evident for both the red and blue subpopulations.

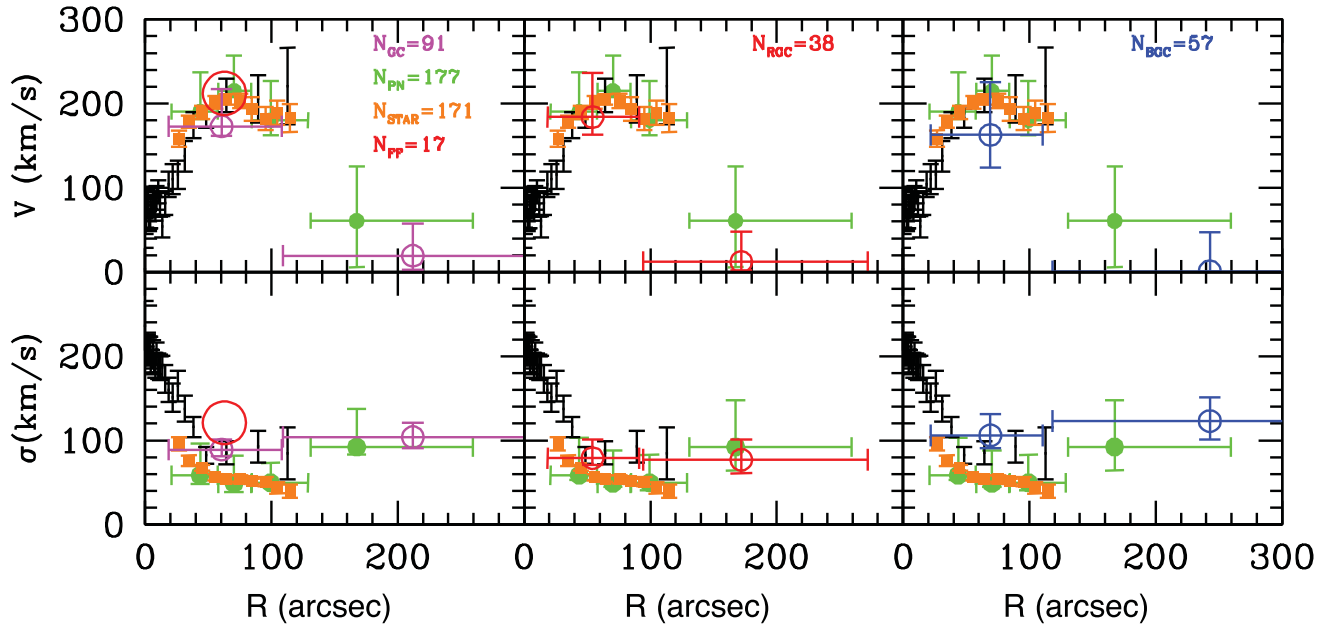


Figure 6. Recovered kinematic profile for the GCs (magenta), PNe (green) and stellar data (orange). The top panels show the rotation velocity and the bottom panels the dispersion velocity. The radius has been obtained using the following formula $R^2 = X^2 \cos(I) + Y^2 / \cos(I)$, where I is the inclination of the galaxy on the plane of the sky, estimated from the disc axis ratio fitted with GALFIT. Black open circles are absorption line data (Debatista, Corsini & Aguerri 2002). The left-hand panels include all the GCs and the FFs (red large open circle), the middle panels red GCs and the right-hand panels blue GCs. All the kinematic tracers show the same kinematics profile. The kinematics of red and blue GCs are very similar within errors.

thick disc (Zinn 1985) and then with the galactic bulge, due to the similarity of the net rotation of the innermost red GCs with that of the old field giant stars in the Galactic bulge (Zinn 1996). To compare the GC kinematics with those of the other tracers, we obtain the rotation velocity by fitting an inclined disc model using a maximum likelihood method (Cortesi et al. 2011) for PNe and GCs, while the SKiMS kinematics are obtained with kinemetry (Foster et al., 2015). The results are shown in Fig. 6. All the tracers (even when dividing GCs into the blue and red subpopulations) have the unusual kinematic profile found by Noordermeer et al. (2008) for PNe, characterized by a decreasing rotation velocity and increasing random motions, in the outermost points (i.e. beyond 140 arcsec).

The agreement found in the spatial distribution and the kinematics of the three tracers suggests that we can use the stellar kinematics as recovered by integrated stellar light and PNe to model the GC velocity field.

3.2 Kinematic model of NGC 1023 from PNe and integrated stellar light

In Section 3.1 we showed that, when recovering the kinematics of N1023 using PNe, GCs and integrated stellar light as tracers, the rotation velocity decreases at large radii, while the velocity dispersion increases. In a work based only on PNe data, Cortesi et al. (2011) explained this behaviour as a result of contamination of the disc kinematics by PNe belonging to the spheroidal component. Cortesi et al. (2011) also show that assuming a spheroid+disc kinematic model, the unusual behaviour of the kinematics vanishes and the galaxy presents a spiral-like velocity profile, with a flat rotation curve, decreasing random motion in the disc and a pressure-supported spheroidal component. As a first test, we want to investigate whether, when a spheroid+disc model is applied, the SKiMS data also present disc-like kinematics, as found for the PNe. In the present section, we give a brief summary of the method used

to obtain the spheroid and disc kinematics for PNe and integrated stellar light data, but we refer to Cortesi et al. (2011) for a more detailed explanation.

A galaxy R -band image (Noordermeer et al. 2008) is decomposed into its spheroid and disc component using GALFIT (Peng et al. 2002). The PNe and SKiMS data are superimposed on the image obtained by dividing the spheroid model by the total model, called f -map, and a probability f_i (from 0 to 1) is assigned to each tracer, i.e. objects with $f_i = 1$ would definitely be in the spheroid and object with $f_i = 0$ would definitely be in the disc. We use a maximum likelihood method to estimate the best kinematics parameters (i.e. rotation velocity and velocity dispersion in the disc, dispersion velocity in the spheroid), assuming a velocity distribution function which is the sum of the spheroid distribution function (with zero mean rotation velocity) and the disc distribution function. The assumption that the mean spheroid rotation is zero will be relaxed below. Both distribution functions are assumed to be Gaussian and the contribution of each one of them to the total distribution is given by the parameter f_i . The fit is carried out in four radial bins for the PNe and three radial bins for the SKiMS data, with the same number of objects in each bin, always higher than 30 in order to assure a reliable fit. The fit is iterated several times, each time rejecting 3σ outliers, i.e. objects with a likelihood lower than the *likelihood clipping probability threshold*, which is the value at which we cut the velocity distribution function (Cortesi et al. 2011). The fit rapidly converges rendering this process robust against a small amount of contamination. Since the SKiMS data are not point sources but slitlets, we have assumed that every slit is approximately described by a Gaussian velocity distribution function and we have extracted 10 random realizations of every slit, in order to have 10 different mock catalogues, and carried out the analysis aforementioned on every catalogue independently. In Fig. 7, left-hand panel, the orange dots represent the median of the recovered parameters and the error is given by their standard deviation. The PNe kinematics are shown

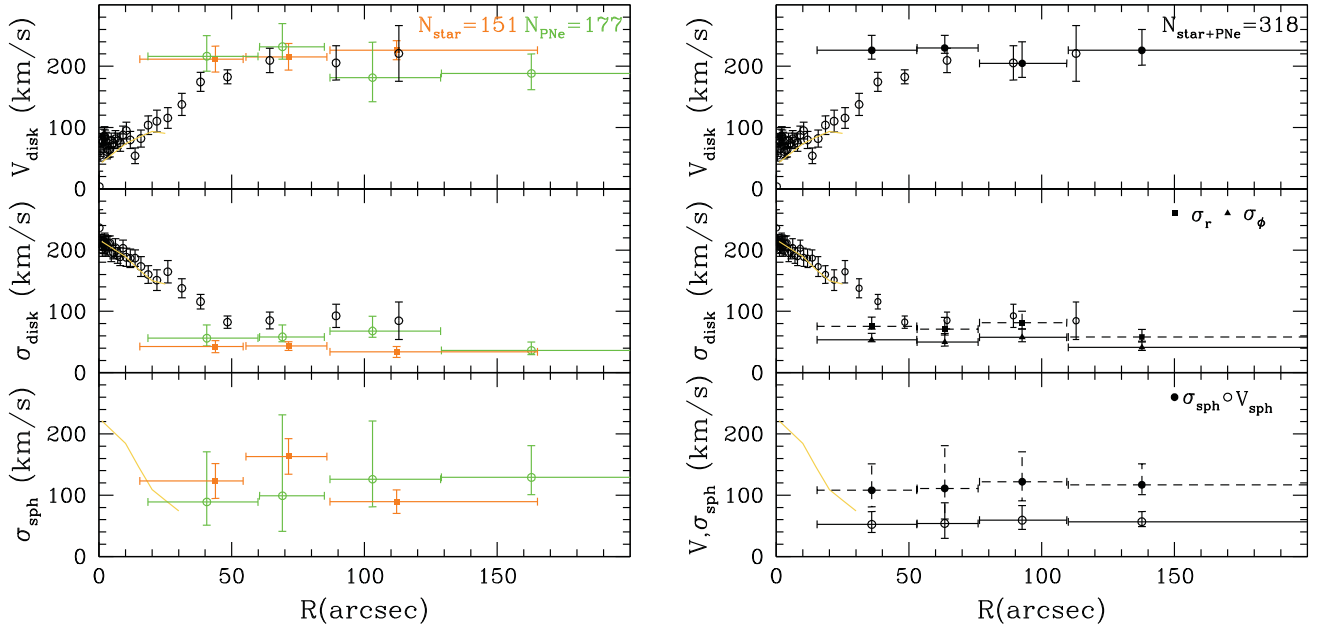


Figure 7. NGC 1023 disc and spheroid kinematics recovered with PNe and integrated stellar light. Left-hand panels: the best-fitting kinematic parameters for PNe (green dots) and stars (orange dots) are shown with 1σ error bars. Error bars on the x -axis show the bin size. Open, black circles correspond to absorption line data along the major axis (Debatista et al. 2002) and the yellow line is obtained by extracting SAURON data in cones along the major axis (top and middle panels) and minor axis (bottom panel). The top panel presents the disc rotation velocity, while the middle panel shows the disc velocity dispersion. The bottom panel shows the velocity dispersion in the spheroid. Right-hand panels: as in the left-hand panels but when the two data sets are unified in the same catalogue. Given the high number of tracers we can estimate the spheroid rotation, shown as black open dots with continuous error bars in the bottom panel.

by green dots. Error bars on the y -axis are 1σ error bars for the recovered parameters. Error bars on the x -axis show the size of the bin where the fit was performed. The kinematics of stars and PNe is clearly similar. We can therefore unite the two data sets to obtain a catalogue of more than 300 tracers and recover the galaxy kinematics with more precision. Moreover, we estimate the rotation of the spheroid, see black circles with continuous error bars in the bottom, right-hand panel of Fig. 7. This estimate assumes that $V_{\text{sph}}/\sigma_s \sim e/\sqrt{2}$, where V_{sph} is the rotation velocity of the galaxy spheroid and e the spheroid ellipticity (see fig. 4.14 in Binney & Tremaine 1987). The GALFIT modelling shows that the spheroid in NGC 1023 has an ellipticity of ~ 0.25 , which translates into a predicted value of $V_s/\sigma_s \sim 0.5$. We also recover two components of the velocity dispersion σ_ϕ, σ_r , see second row of Fig. 7, right-hand panel (we assume $\sigma_z \simeq 0$). The average ratio between rotation velocity and velocity dispersion in the azimuthal direction, in the two outermost bins, is $\simeq 4.4 \pm 0.6$. This value is lower than the one expected for a spiral galaxy (Herrmann & Ciardullo 2009) suggesting that this S0 galaxy is not simply a faded spiral. Following Bournaud et al. (2005), this value of V/σ_ϕ is consistent with this galaxy being involved in only very minor mergers in its past, see the Discussion section for more details.

GCs give us, therefore, a unique opportunity for verifying the various possible formation histories of S0 galaxies, in particular whether S0s are faded spirals or an independent class of galaxies. In fact, if the spiral galaxy has gone through a series of minor mergers that transformed it into an S0 galaxy, GCs may have been stripped from the accreted dwarf galaxies, which will pollute the chromodynamical relation found for spiral galaxies (Forbes et al. 2001). Nevertheless, we would expect to find the majority of red GCs to be associated with the spheroid or thick disc and blue GCs with the galaxy halo, as found in spiral galaxies.

3.3 Chromodynamical analysis of GCs

In the previous section, using a unified catalogue of PNe and SKiMS data sets, we have recovered the kinematics for the lenticular galaxy NGC 1023, assuming a disc+spheroid model. Fig. 4 shows that in this galaxy the GCs follow the stellar light profile as modelled with GALFIT. It is therefore reasonable to use this model to assign a photometric probability, f_i , to each GC of belonging to one or the other component. As for the PNe and the integrated stellar light data, we obtained f_i by overplotting the GCs on the f -map (see Section 3.2). In Fig. 8, upper panel, we show the histogram of the distribution of this parameter. It can be seen that the majority of the GCs appear to be associated with the disc component or have a probability around 0.5 of being in the disc, as expected given the decomposition shown in Fig. 4 and the fact that the distribution of red and blue GCs in this galaxy is elongated along the major axis, resembling the disc isophotes (Kantha et al. 2014). In fact, when we get the probability of being in the spheroid for a random distribution of objects, whose density declines as $1/r$, we find that there is a higher number of objects associated with the spheroid, see the black spikes in Fig. 8, upper panel.

Given the best estimators $V, \sigma_r, \sigma_\phi, \sigma_s$, within each radial bin, obtained via a maximum likelihood fitting of PNe and SKiMS data (see Section 3.2) and the parameter f_i described in the previous paragraph, we can write the likelihood of each GC to belonging to the system as

$$\mathcal{L}(v_i, f_i; V, \sigma_r, \sigma_\phi, \sigma_s) \propto \frac{f_i}{\sigma_s} \exp\left[-\frac{v_i^2}{2\sigma_s^2}\right] + \frac{1-f_i}{\sigma_{\text{los}}} \exp\left[-\frac{(v_i - V_{\text{los}})^2}{2\sigma_{\text{los}}^2}\right], \quad (1)$$

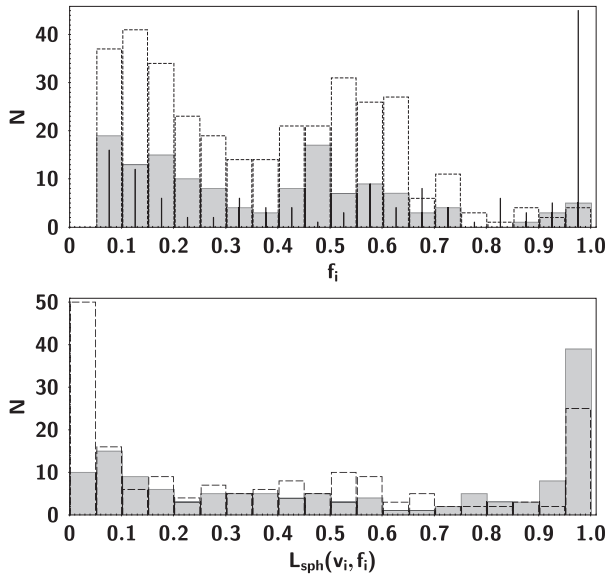


Figure 8. Probability of belonging to the spheroidal component. Upper panel: histogram showing the probability of being in the spheroid based on photometry f_i , as recovered overplotting on the f -map (see Section 3.2) the GCs, filled histogram, the PNe, dashed histogram and a random distribution of object, with a $1/r$ density fall-off, black spikes. Objects with $f_i = 1$ belong to the spheroid and objects with $f_i = 0$ belong to the disc. Bottom panel: histogram showing the probability of being in the spheroid based on photometry and kinematics, $\mathcal{L}_{\text{sph}}(v_i, f_i)$ for the GCs, filled area, and the PNe, dashed line.

where

$$V_{\text{los}} = V_{\text{sys}} + V \sin(i) \cos(\phi) \quad (2)$$

is the projection of the galaxy’s mean rotation velocity V ,

$$\sigma_{\text{los}}^2 = \sigma_r^2 \sin^2 i \sin^2 \phi + \sigma_\phi^2 \sin^2 i \cos^2 \phi + \sigma_z^2 \cos^2 i \quad (3)$$

is the line-of-sight velocity dispersion in cylindrical polar coordinates (R, ϕ, z) , assuming that σ_z is negligible in its contribution to σ_{los} , because of the near edge-on viewing angle, and σ_s is the dispersion in the spheroid. Equation (1) gives us the probability for each GC of belonging to the NGC 1023 system. If the recovered total likelihood is lower than the *likelihood clipping probability threshold*, the GC is labelled as unlikely to belong to the system at 2.1σ level of confidence (see Section 3.2 and Cortesi et al. 2011 for details). This threshold has been chosen for consistency, since it is the same one used to fit the PNe and stellar kinematics. In Cortesi et al. (2011), different level of confidences have been tested on a model galaxy obtained from a self-consistent N -body simulation and 2.1σ was selected for providing a robust fit. The likelihood of being in the spheroid, $\mathcal{L}_{\text{sph}}(v_i, f_i)$ is proportional to the first part of equation (1) normalized by the total likelihood. The likelihood of being in the disc, $\mathcal{L}_{\text{disc}}(v_i, f_i)$, is proportional to the second part of equation (1) normalized for the total likelihood. For each GC given its position and velocity and its photometric probability of being in the spheroid, we can estimate its likelihood of belonging to the system and of being in one of the two components. The distribution of the probability of being in the spheroid, $\mathcal{L}_{\text{sph}}(v_i, f_i)$, obtained combining photometry and kinematics (lower panel of Fig. 8) is clearly different from that recovered only from photometry. In particular, the number of objects for which the probability of being in the disc is equal to the probability of being in the spheroid has decreased. In fact, assigning objects to different

components only on the basis of the photometric decomposition is inadequate, due to projection effects. Combining photometric information with kinematics improves our capacity to discriminate between spheroid and disc objects, since it adds constraint where the photometric probability of belonging to the disc is equal to the probability of being on the spheroid, i.e. the probability is 50 per cent of being in the disc and 50 per cent of being in the spheroid. Moreover, objects that lie along the major axis, and would be therefore assigned to the disc on the basis of photometry, but present no rotation or are counter-rotating are rejected. Note that the recovered likelihood of being in the spheroid for GCs is very similar to the likelihood of being in the spheroid obtained for the PNe, i.e. the majority of the objects are associated with the spheroid or the disc, see Fig. 8, since combining photometry with kinematics breaks down the degeneracy due to projection effects. The number of PNe associated with the disc is higher than the number of PNe associated with the spheroid; the contrary is true for the GCs.

The method is in general applicable to every discrete kinematic tracer and other components can be added to the model as a thin disc or a halo, if the necessary data are available. The recovered likelihood is listed in the GC catalogue published with this paper.

4 RESULTS

Having computed the likelihood for every GC of belonging to the model of the galaxy obtained combining photometric information from an R -band galaxy image and PNe and SKiMs kinematics, in this section we study the properties of the GC population and subpopulations. We have defined four different subpopulations: red and blue GCs, on one hand, and disc and spheroid GCs, on the other. It should be noted that in this preliminary study the spheroid may incorporate bulge and halo subpopulations with different properties. In Section 4.1 we investigate the relation between these four subpopulations and the galaxy as a whole. In Section 4.2 we study all the kinematic tracers unlikely to belong to NGC 1023 system and their connection with the companion galaxy, NGC 1023A.

4.1 Kinematic–colour relation

To obtain a clearer picture of the correlation between GC colour and kinematics, we have to take into consideration the shape of the bi-modal colour distribution. In fact, the red and blue subpopulations overlap at intermediate colours, and our artificial colour cut at $(g - z) = 1.1$ is an approximation. We fitted the two subpopulations with a Gaussian function and estimated that the area in which the two subpopulations significantly overlap is $1.0 < (g - z) < 1.1$ and we exclude GCs with these colours from our analysis. As a first step, we calculate the total number of disc and spheroid GCs, simply summing up the probability for each one of them of being in the disc or in the spheroid. We find that out of the 32 red GCs, 19 are associated with the disc and 13 with the spheroid. While 18.6 blue GCs are associated with the disc and 25.4 with the spheroid. Finally, 15 GCs are found to have a probability lower than 2.1σ of belonging to the system. The majority of the rejected GCs have blue colours. Looking at the trend of $\mathcal{L}_{\text{sph}}(v_i, f_i)$ versus the $(g - z)$ colour of the GCs, we realize that an extra parameter is needed to make this plot meaningful. Fig. 9 shows the distribution of the GCs (associated with the system) in a colour versus galactocentric distance plot, colour coded according to the probability of being in the spheroid $\mathcal{L}_{\text{sph}}(v_i, f_i)$. It is clear that the reddest GCs are concentrated in the centre of the galaxy and that they are associated with the galaxy disc. This fact is of particular interest since in this

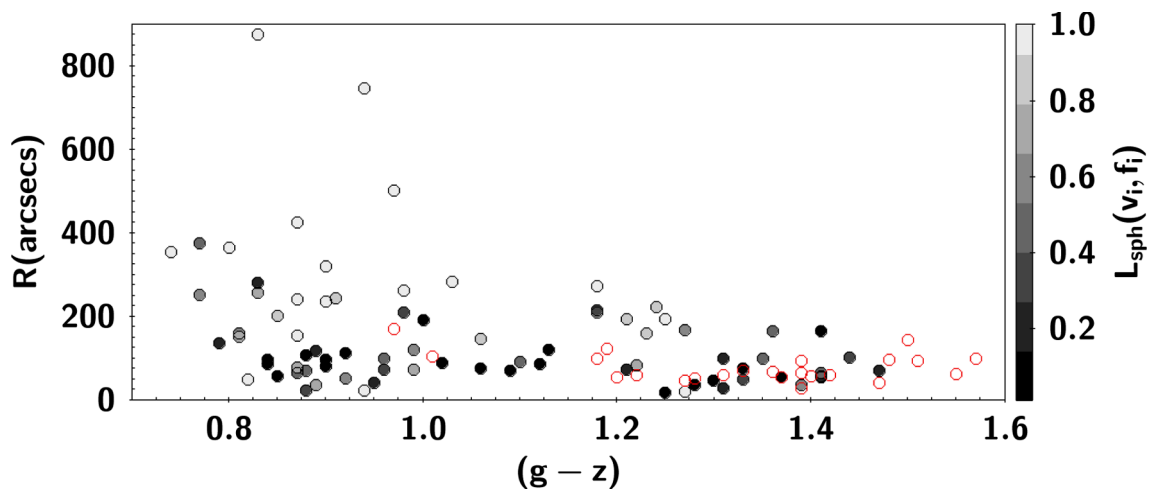


Figure 9. GC colour versus distance from the galaxy centre. The GCs are colour coded according to their probability of belonging to the spheroid. Large, red, open circles mark the position of the FFs in the same plane. The reddest GCs are likely to be associated with the galaxy disc and share the same loci as FFs in this plot. The majority of blue GCs are likely to be associated with the spheroid, but some have a high probability of being in the disc.

galaxy a population of FFs has been found to have rotational velocity similar to the stellar one (Larsen & Brodie 2000). FFs are also shown in Fig. 9 as red open circles. They share the same position as the disc red GCs. For red GCs it seems that the redder the GC the higher is its probability of belonging to the disc. For blue GCs, instead, this probability seems to correlate with its distance from the galaxy centre, with GC at low radii having a higher probability of belonging to the disc.

4.2 Rejections and streams

The method used in this paper to recover the galaxy kinematics allows us to identify outliers, i.e. objects that are not in equilibrium with NGC 1023 disc+spheroid potential (see Cortesi et al. 2011 for details). Some of the rejected GCs fall in an area of the galaxy where there are no data available to recover the kinematics. Therefore we have extrapolated the galaxy kinematics in these outer regions from the outermost bin, for which we have PNe and stellar kinematics. The outer parts of this galaxy are generally dominated by the spheroid component that we assume to represent the bulge+halo components of the galaxy. If this assumption is not correct these outliers could be halo GCs. On the other hand, they could be objects that are in the process of being accreted to the system.

Rocha, Peter & Bullock (2012), in a study of the kinematics of the MW satellites, show that it is possible to quantify the time since they have started falling on to the MW using a 1D phase-space diagram. In such a diagram the infall time of an object is proportional to its distance from the galaxy systemic velocity. Fig. 10, left-hand panel, shows the 1D phase-space diagram for NGC 1023. Rejected objects are shown as grey symbols (GCs: crosses; PNe and stars: squares and companion galaxy objects: asterisks). Objects included in our model are shown as coloured symbols. The PNe and integrated stellar light individual data points are shown as tiny green squares, GCs as small circles and FFs as large circles. The galaxy systemic velocity is shown as a dashed line. PNe, integrated stellar light data points, and GCs form a half-diamond structured centred around the galaxy systemic velocity. The companion galaxy PNe and GCs and some of the rejected objects lie at the borders of this half-diamond, as if they are just starting in-falling. Fig. 10, right-hand panel, shows

the velocity versus distance along the major axis for all the objects, following the same symbols' convention as in the left-hand panel. The PNe and stars follow a radial gradient in velocity, typical of rotating system. GCs and FFs follow the same distribution as PNe. In particular, the GCs belonging to the disc (open small circle) lie in the external part of the distribution, i.e. they have a high velocity respect to the galaxy systemic velocity. The majority of the GCs associated with the galaxy spheroid (filled small circle), instead, are located near the galaxy centre or along the minor axes. The rejected objects seem to form a coherent structure in the phase space, connected with the companion galaxy, suggesting they may have been stripped from the companion while orbiting the main galaxy. Three of the UCDs are in the same locus as the companion galaxy and one belongs to the stream, suggesting a possible origin of the UCD connected with the interaction of the two galaxies (Duc & Mirabel 1994). This result needs confirmation with more data.

Fig. 10 supports a scenario where the rejected GCs are part of a stream connecting NGC 1023A with the main galaxy. This possibility can be fully confirmed when data to properly describe the galaxy halo will be available.

5 DISCUSSION

In this paper we present a new catalogue of spectroscopically confirmed GCs associated with the lenticular galaxy NGC 1023 and its companion galaxy NGC 1023A. We find that in this galaxy the GCs follow the total galaxy light profile and are therefore good tracers of the overall stellar population. Their kinematics are also consistent with the stellar kinematics. We divide the GCs according to their colour, at $(g - z) = 1.1$, and find that the light profile and kinematics of both the red and blue subpopulations also resemble the stellar light profile and kinematics.

However, for both red and blue GCs, it is not clear from the comparison of the number density profiles with the decomposed disc and spheroid profiles whether the GCs better match either the disc or spheroid light profiles. We, therefore, develop a new method to associate GCs to the galaxy disc and spheroid on the basis of their position and velocities, using PNe, integrated stellar light and an *R*-band image of the galaxy, to model the galaxy kinematics.

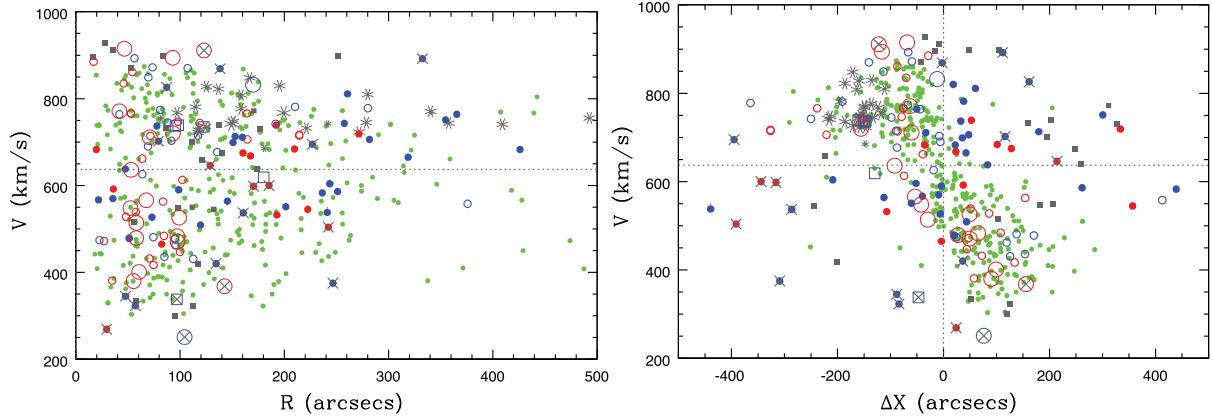


Figure 10. Left: GCs 1D phase-space diagram. Rejected objects are shown as grey symbols (GCs: crosses; PNe and stars: squares and companion galaxy objects: asterisks). Objects included in our model are shown as coloured symbols. For GCs, small open circles identify objects belonging to the disc, while small filled circles identify objects belonging to the spheroid. UCDs are shown as blue squares, FFs as large circles and PNe and integrated stellar light individual data points as green dots. The dashed horizontal line shows the galaxy systemic velocity. The higher the distance from the galaxy systemic velocity, lower is the infall time, see text. Right: position along the major axis versus velocity. Symbols are like in the left-hand panel. The vertical line shows the centre of major axis. Rejected objects form a coherent structure connected to the companion galaxy.

We find that the majority of red GCs (19) have a high likelihood of belonging to the galaxy disc. The other (13) red GCs belong to the spheroid. Interestingly NGC 1023 has a subpopulation of red FFs (Larsen & Brodie 2000) whose kinematics are indistinguishable from the stellar kinematics of the disc (Chies-Santos et al. 2013) and whose azimuthal distribution is elongated along the galaxy major axis (Forbes et al. 2014). The majority of blue GCs are spheroid-like objects (25.4), but, surprisingly 18.6 are found to be disc-like objects.

The ratio between rotation velocity and velocity dispersion in the azimuthal direction in NGC 1023 is $\simeq 4.4 \pm 0.6$. This value is lower than the one expected for spiral galaxies (Herrmann & Ciardullo 2009) suggesting that this S0 galaxy is not simply a faded spiral. Following Bournaud et al. (2005), this value of V/σ_ϕ is consistent with this galaxy having been involved in only very minor mergers in its past. An alternative explanation for our finding that V/σ is rather low in the disc of N1023 is provided by the possibility of forming the galaxy disc at high redshift through the merger of superstar-forming clumps during the gas-rich phase of galaxy evolution. Shapiro et al. (2010), in fact, suggested that red GCs are born within ‘turbulent and clumpy’ discs at $z \simeq 2$, i.e. discs forming in a violent way. At $z \simeq 0$, these discs (when they survive) may look much hotter than the thin discs in spiral galaxies. Clumpy disc formation, moreover, would leave imprints in the halo, as suggested by simulations from Inoue (2013). Halo objects could interact gravitationally with the giant clumps and acquire rotation in a dynamical friction time-scale of 0.5 Gyr. The influence of the clumps would be limited to a region around the disc. This formation scenario explains the finding that red and blue GCs in the inner part of the galaxy have a disc-like kinematics.

Nevertheless, the galaxy is going through an interaction (and maybe a minor merger) at the present epoch with a companion galaxy, NGC 1023A, visible inside the galaxy disc optical isophotes. This little companion may have been stripped of its gas, producing an extended and irregular H I distribution, displaced from the optical centre (Sancisi et al. 1984). We find that some of the GCs that are unlikely to be in equilibrium with the potential of NGC 1023 are part of a stream, probably connected to the companion galaxy. Blue FFs, moreover, are associated with the companion galaxy and the H I clumps (Forbes et al. 2014). Some of the GCs unlikely to

belong to the model of the galaxy could be halo GCs that are not well represented by our simple model and are, therefore, rejected during the fitting.

NGC 1023 seems to have a population of GCs associated with its disc. In contrast, in the S0 galaxy NGC 2768 red GCs share the same kinematics and density profile as spheroid stars (Forbes et al. 2012), as found for the MW and the Sombrero galaxy. This framework provides an interesting possibility for testing how a given galaxy disc formed: by seeing if there are associated red GCs.

As more GC data in spiral galaxies become available, together with the ages of S0 galaxy disc and spheroid, and PNe kinematics of galaxy haloes are obtained, the formation scenario for S0 galaxies will become clearer. For the moment, we find that GCs are powerful probes of galaxy evolution and that the red GCs in the two lenticular galaxies NGC 1023 and NGC 2768 are associated with different galaxy components, suggesting that S0 galaxies form through different pathways (or that their progenitors formed through different pathways).

6 SUMMARY AND CONCLUSIONS

In this paper we have published a new catalogue of GCs and introduced a new method to associate GCs with different galactic components, given a kinematic model. This method also allows us to identify streams and can be applied to any discrete kinematic tracers. In particular we have used PNe, stellar light and an R-band image to constrain the kinematic model of NGC 1023, decomposing it into its disc and spheroid components. Following that we have studied its GC population. The main findings are the following.

- (i) The GCs follow the stellar density profile and kinematics.
- (ii) Both red and blue GC subpopulations show rotation.
- (iii) When decomposing the galaxy into its spheroid and disc component, we find that the majority of the red GCs show disc-like kinematics, the others are consistent with being in the spheroid. Most of the blue GCs have a high likelihood to belong to the spheroid, but some of them show disc-like kinematics.
- (iv) The GCs that are unlikely to belong to the galaxy model appear to be associated with a stellar stream, connected to the companion galaxy NGC 1023A, previously identified by Cortesi et al.

(2011) using PNe. We note that they could also be halo GCs that are not well represented by our simple model and are, therefore, rejected during the fitting.

All these findings are consistent with this galaxy having been involved in at least one minor mergers, while its disc was created at high redshift from superstar-forming clumps. Moreover, in the only other galaxy for which similar data are available, NGC 2768, the red GCs share the same kinematics and density profile as spheroidal stars. This suggests that S0 galaxies are a heterogeneous class and that GCs are powerful probes of galaxy evolution. The newly developed method will be applied on a sample of lenticular galaxies to place stronger constraints in the galaxy-GCs assembly history.

ACKNOWLEDGEMENTS

The authors would like to thank Dr D. Kruijssen and Dr Y. Jaffe for interesting discussions and suggestions. This work was supported by NSF grant AST-1211995. AC would like to thank FAPESP for the fellowship 2013/04582-4. ALC-S acknowledges receipt of a Royal Society travel grant and the hospitality at UC Santa Cruz and funding from a CNPq, BJT-A fellowship (400857/2014-6). DAF thanks the ARC for financial support via DP130100388.

REFERENCES

- Alamo-Martínez K. A. et al., 2013, *ApJ*, 775, 20
 Aragón-Salamanca A., 2008, in Bureau M., Athanassoula E., Barbuy B., eds, *Proc. IAU Symp. 245. Formation and Evolution of Galaxy Bulges*. Cambridge Univ. Press, Cambridge, p. 285
 Aragón-Salamanca A., Bedregal A. G., Merrifield M. R., 2006, *A&A*, 458, 101
 Arnold J. A. et al., 2014, *ApJ*, 791, 80
 Binney J., Tremaine S., 1987, *Galactic Dynamics*. Princeton Univ. Press, Princeton, NJ
 Borlaff A. et al., 2014, *A&A*, 570, A103
 Bournaud F., Jog C. J., Combes F., 2005, *A&A*, 437, 69
 Brodie J. P., Strader J., 2006, *ARA&A*, 44, 193
 Brodie J. P., Usher C., Conroy C., Strader J., Arnold J. A., Forbes D. A., Romanowsky A. J., 2012, *ApJ*, 759, L33
 Brodie J. P. et al., 2014, *ApJ*, 796, 52
 Byrd G., Valtonen M., 1990, *ApJ*, 350, 89
 Cantiello M., Blakeslee J. P., Raimondo G., Chies-Santos A. L., Jennings Z. G., Norris M. A., Kuntschner H., 2014, *A&A*, 564, L3
 Chies-Santos A. L., Larsen S. S., Cantiello M., Strader J., Kuntschner H., Wehner E. M., Brodie J. P., 2012, *A&A*, 539, A54
 Chies-Santos A. L., Cortesi A., Fantin D. S. M., Merrifield M. R., Bamford S., Serra P., 2013, *A&A*, 559, A67
 Coccato L. et al., 2009, *MNRAS*, 394, 1249
 Cortesi A. et al., 2011, *MNRAS*, 414, 642
 Cortesi A. et al., 2013a, *A&A*, 549, A115
 Cortesi A. et al., 2013b, *MNRAS*, 432, 1010
 Debattista V. P., Corsini E. M., Aguerrí J. A. L., 2002, *MNRAS*, 332, 65
 Desai V. et al., 2007, *ApJ*, 660, 1151
 Douglas N. G. et al., 2002, *PASP*, 114, 1234
 Dressler A., Sandage A., 1983, *ApJ*, 265, 664
 Dressler A. et al., 1997, *ApJ*, 490, 577

- Duc P.-A., Mirabel I. F., 1994, *A&A*, 289, 83
 Forbes D. A., Brodie J. P., Grillmair C. J., 1997, *AJ*, 113, 1652
 Forbes D. A., Brodie J. P., Larsen S. S., 2001, *ApJ*, 556, L83
 Forbes D. A. et al., 2012, *MNRAS*, 426, 975
 Forbes D. A., Almeida A., Spitler L. R., Pota V., 2014, *MNRAS*, 442, 1049
 Forbes D. A., Pastorello N., Romanowsky A. J., Usher C., Brodie J. P., Strader J., 2015, *MNRAS*, 452, 1045
 Foster C. et al., 2011, *MNRAS*, 415, 3393
 Foster C., Arnold J. A., Forbes D. A., Pastorello N., Romanowsky A. J., Spitler L. R., Strader J., Brodie J. P., 2013, *MNRAS*, 435, 3587
 Foster C. et al., 2015, preprint ([arXiv:eprints](http://arxiv.org/abs/1508.00001))
 Gunn J. E., Gott J. R., III, 1972, *ApJ*, 176, 1
 Harris W. E., 2010, *R. Soc. Lond. Philos. Trans. Ser. A*, 368, 889
 Herrmann K. A., Ciardullo R., 2009, *ApJ*, 705, 1686
 Inoue S., 2013, *A&A*, 550, A11
 Kartha S. S., Forbes D. A., Spitler L. R., Romanowsky A. J., Arnold J. A., Brodie J. P., 2014, *MNRAS*, 437, 273
 Kronberger T., Kapferer W., Unterguggenberger S., Schindler S., Ziegler B. L., 2008, *A&A*, 483, 783
 Kruijssen J. M. D., Pelupessy F. I., Lamers H. J. G. L. M., Portegies Zwart S. F., Bastian N., Icke V., 2012, *MNRAS*, 421, 1927
 Larsen S. S., Brodie J. P., 2000, *AJ*, 120, 2938
 Minniti D., 1995, *A&A*, 303, 468
 Naab T. et al., 2014, *MNRAS*, 444, 3357
 Noordermeer E. et al., 2008, *MNRAS*, 384, 943
 Norris M. A. et al., 2008, *MNRAS*, 385, 40
 Norris M. A. et al., 2014, *MNRAS*, 443, 1151
 Peng C. Y., Ho L. C., Impey C. D., Rix H.-W., 2002, *AJ*, 124, 266
 Pota V. et al., 2013, *MNRAS*, 428, 389
 Proctor R. N., Forbes D. A., Brodie J. P., Strader J., 2008, *MNRAS*, 385, 1709
 Proctor R. N., Forbes D. A., Romanowsky A. J., Brodie J. P., Strader J., Spolaor M., Mendel J. T., Spitler L., 2009, *MNRAS*, 398, 91
 Quilis V., Moore B., Bower R., 2000, *Science*, 288, 1617
 Rocha M., Peter A. H. G., Bullock J., 2012, *MNRAS*, 425, 231
 Sancisi R., van Woerden H., Davies R. D., Hart L., 1984, *MNRAS*, 210, 497
 Shapiro K. L., Genzel R., Förster Schreiber N. M., 2010, *MNRAS*, 403, L36
 Yoon S.-J., Yi S. K., Lee Y.-W., 2006, *Science*, 311, 1129
 Zinn R., 1985, *ApJ*, 293, 424
 Zinn R., 1996, in Morrison H., Sarajedini A., eds, *ASP Conf. Ser. Vol. 92, Formation of the Galactic Halo...Inside and Out*. Astron. Soc. Pac., San Francisco, p. 211

SUPPORTING INFORMATION

Additional Supporting Information may be found in the online version of this article:

N1023_GC.dat (<http://www.mnras.oxfordjournals.org/lookup/suppl/doi:10.1093/mnras/stv2753/-/DC1>).

Please note: Oxford University Press is not responsible for the content or functionality of any supporting materials supplied by the authors. Any queries (other than missing material) should be directed to the corresponding author for the article.

This paper has been typeset from a $\text{\TeX}/\text{\LaTeX}$ file prepared by the author.