



The 10,000-year biocultural history of fallow deer and its implications for conservation policy

Karis H. Baker^a, Holly Miller^b, Sean Doherty^c, Howard W. I. Gray^a, Julie Daujat^b, Canan Çakırlar^d, Nikolai Spassov^e, Katerina Trantalidou^f, Richard Madgwick^g, Angela L. Lamb^h, Carly Ameen^c, Levent Aticiⁱ, Polydora Baker^j, Fiona Beglane^k, Helene Benkert^c, Robin Bendrey^l, Annelise Binois-Roman^m, Ruth F. Cardenⁿ, Antonio Curci^o, Bea De Cúpere^p, Cleia Detry^q, Erika Gál^r, Chloé Genies^s, Günther K. Kunst^t, Robert Liddiard^u, Rebecca Nicholson^v, Sophia Perdikaris^w, Joris Peters^{xy}, Fabienne Pigièrè^z, Aleksander G. Pluskowski^{aa}, Peta Sadler^{bb}, Sandra Sicard^{cc}, Lena Strid^{dd}, Jack Sudds^e, Robert Symmons^{ee}, Katie Tardio^{ff}, Alejandro Valenzuela^{gg}, Monique van Veen^{hh}, Sonja Vukovićⁱⁱ, Jaco Weinstock^{jj}, Barbara Wilkens^{kk}, Roger J. A. Wilson^{ll}, Jane A. Evans^h, A. Rus Hoelzel^{aa}, and Naomi Sykes^{c,1}

Edited by Melinda Zeder, Smithsonian National Museum of Natural History, Washington, DC; received June 15, 2023; accepted December 14, 2023

Over the last 10,000 y, humans have manipulated fallow deer populations with varying outcomes. Persian fallow deer (*Dama mesopotamica*) are now endangered. European fallow deer (*Dama dama*) are globally widespread and are simultaneously considered wild, domestic, endangered, invasive and are even the national animal of Barbuda and Antigua. Despite their close association with people, there is no consensus regarding their natural ranges or the timing and circumstances of their human-mediated translocations and extirpations. Our mitochondrial analyses of modern and archaeological specimens revealed two distinct clades of European fallow deer present in Anatolia and the Balkans. Zooarchaeological evidence suggests these regions were their sole glacial refugia. By combining biomolecular analyses with archaeological and textual evidence, we chart the declining distribution of Persian fallow deer and demonstrate that humans repeatedly translocated European fallow deer, sourced from the most geographically distant populations. Deer taken to Neolithic Chios and Rhodes derived not from nearby Anatolia, but from the Balkans. Though fallow deer were translocated throughout the Mediterranean as part of their association with the Greco-Roman goddesses Artemis and Diana, deer taken to Roman Mallorca were not locally available *Dama dama*, but *Dama mesopotamica*. Romans also initially introduced fallow deer to Northern Europe but the species became extinct and was reintroduced in the medieval period, this time from Anatolia. European colonial powers then transported deer populations across the globe. The biocultural histories of fallow deer challenge preconceptions about the divisions between wild and domestic species and provide information that should underpin modern management strategies.

fallow deer | translocations | extinctions | zooarchaeology | biomolecules

There are two recognized species of fallow deer: the Persian (*Dama mesopotamica*) and the European (*Dama dama*). The Persian fallow deer was once widespread across Southwest Asia and the eastern Mediterranean, but following a severe population decline, the species is currently considered Endangered by the International Union for the Conservation of Nature (IUCN) (1). Conversely, the European fallow deer, native to the eastern Mediterranean, is classified as Least Concern due to their human-mediated translocation and establishment across Eurasia, Africa, America and Oceania (2, 3). Despite their large population size and broad distribution, their genetic diversity is very low, suggesting conservation vulnerability (4). The herd of European fallow deer at Güllük Dağı-Termessos National Park (Turkey) is considered the last native wild population and, as such, has a protected status (5). Conservation measures extend to the *Dama* population on the nearby island of Rhodes, which is protected by Greek law (6).

The Rhodes *Dama* are thought to descend from a population of European fallow deer introduced ~7,000 y ago (6–8). Early farmers of the 6th–5th millennium BCE also established populations of European fallow deer on the islands of Lemnos, Lesbos, Chios, and Crete (9–11), whereas Persian fallow deer were transported to Cyprus ~10,000 y ago (12).

Both species were as heavily influenced by people as other taxa classically associated with the Neolithic Package including cattle, sheep, goats, and pigs. In addition, modern European fallow deer are farmed in their millions (13) and exhibit coat color variations indicative of selective breeding (14). Despite these characteristics, fallow deer are rarely included in large-scale reviews of domestic animals (12, 15). European fallow deer have been equally overlooked by conservation scientists, for whom the species' domestic legacy

Significance

Persian and European fallow deer formed part of the Levantine Neolithic Package were worshiped as Greco-Roman deities and, over millennia, were the subject of repeated human-mediated translocations and extirpations. By integrating biomolecular datasets with archaeological and textual evidence, we reveal these species' biocultural histories—spanning their Glacial refugia to their global spread as symbols of colonial power. The deep histories of fallow deer highlight the problems inherent in dichotomous categorizations of all species as either wild or domestic. In addition, they complicate existing wildlife conservation strategies and offer alternative perspectives on the management of translocated animals.

The authors declare no competing interest.

This article is a PNAS Direct Submission.

Copyright © 2024 the Author(s). Published by PNAS. This open access article is distributed under Creative Commons Attribution License 4.0 (CC BY).

¹To whom correspondence may be addressed. Email: N.Sykes@exeter.ac.uk.

This article contains supporting information online at <https://www.pnas.org/lookup/suppl/doi:10.1073/pnas.2310051121/-/DCSupplemental>.

Published February 12, 2024.

has meant they are often considered an introduced alien or invasive threat and thus undeserving of protection (16–18).

As neither an accepted domesticated nor a “pristine” wild species, both Persian and European fallow deer have been under-researched relative to other cervids such as reindeer (*Rangifer tarandus*) and red deer (*Cervus elaphus*) which have been the subject of numerous studies concerning their ancient range and management (19–23). By contrast, there is no consensus regarding the European fallow deer’s glacial refugia or natural post-glacial distribution. While some have suggested a single refugium in Anatolia (2), others have claimed multiple refugia across Anatolia, the southern Balkans, Italy, Sicily, and Iberia (4, 24, 25). The timing and circumstances of the fallow deer’s anthropogenic translocations are equally obscure, although numerous human cultures have been held responsible including early Neolithic farmers, Phoenicians, Romans, Normans, and early modern imperialists (26).

Attempts to answer questions about the fallow deer’s history have relied largely on genetic studies of modern animals (4, 7, 8, 27). However, modern DNA has limited retrodictive power, especially when applied to species whose distributions have been heavily modified by humans (15, 28). Recent aDNA studies of fallow deer have demonstrated the necessity of a joined-up ancient-modern genetics approach (29–33), exemplified by Baker et al.’s (34) time-calibrated genetic analyses of fallow deer evolution in Europe from the last glacial period. There is also a need to integrate genetic analyses with other sources of biomolecular data, such as isotope studies, and rich empirical records from across the Humanities and Social Sciences, which together can be used to evidence the long-term management and cultural value of fallow deer.

Here, in order to characterize the glacial range of Persian and European fallow deer, we combined zooarchaeological and biomolecular analysis of ancient and modern *Dama* remains. To increase the power of our results, we integrated them with evidence from archaeology, historical sources, and iconography and show how ancient humans have shaped the modern-day distributions and management strategies of these two species. As such, they represent cultural heritage and arguably deserve protection by the United Nations Educational Scientific and Cultural Organization (UNESCO) as much as from wildlife conservation bodies such as the IUCN.

Results and Discussion

We analyzed 635 osteological samples purported to derive from fallow deer using at least one method (Dataset S1) and generated genetic sequences from 228 ancient samples.

For the European fallow deer, 181 sequences from archaeological samples (35) were combined with those for 222 modern individuals (4, 36). A Bayesian phylogeny constructed from the complete alignment (Fig. 1A) revealed a well-supported (0.89 posterior probability) monophyletic clade consisting of modern and ancient European fallow deer from Northern Europe and Anatolia (depicted in yellow on Fig. 1A and B).

A second clade is made up of ancient and modern fallow deer derived from southern and western European sites and Roman England (depicted in red—Fig. 1A and B). Both clades are distinct from the mitochondrial lineage derived from a single modern Persian fallow deer at the base of the phylogeny.

A shorter sequence was available (128 bp) that showed 18 fixed differences between European and Persian fallow deer, allowing *D. mesopotamica* to be identified from archaeological remains (depicted in purple in Fig. 1B and SI Appendix, Fig. S1)

The zooarchaeological representation data (Dataset S2) and genetic results are summarized in Fig. 2A–D, which also

incorporates the radiocarbon dating evidence (Fig. 3). Multi-element isotope data were generated from 418 specimens (Dataset S1), with results presented in Fig. 4 and SI Appendix, Figs. S6 and S7.

Refugia and Native Range. Our genetic analysis demonstrated that 38 specimens originally identified morphologically as *D. dama* were actually *D. mesopotamica* (SI Appendix, Fig. S1). Their presence at the Bronze Age/early Iron Age sites of Kinet Höyük and Kilise Tepe, Anatolia (Fig. 2A and B) pushes the ancient distribution of Persian fallow deer further west than previously proposed (12).

For the European fallow deer, our data suggest their glacial refugium was restricted entirely to the eastern Mediterranean and there is no zooarchaeological evidence to suggest the existence of autochthonous Holocene fallow deer populations in Iberia or Italy. Within Anatolia, the *D. dama* population demonstrates continuity through time: Neolithic, Roman, and medieval deer share haplotypes (H31) and are closely related to the modern population at Güllük Dağı-Termessos National Park (H47, H48). The modern deer population on Rhodes is genetically distinct from Anatolian deer [a result that corroborates previous studies (7, 8)] and appears more closely related to populations from the Balkans, Italy, and Iberia.

The phylogenetic split between the two populations of European fallow deer (Fig. 1) is consistent with the frequently observed phylogeographic divide found in numerous species with populations that span the Bosphorus (38–40). When combined with the zooarchaeological data (Fig. 2A), this result supports the suggestion of a second glacial refugium in the southern and central Balkans (25, 41). Large quantities of fallow deer remains have been recovered from Neolithic and Bronze Age sites in Bulgaria which demonstrate their early presence in this region. Intriguingly, their remains exhibit morphologies distinct from the Anatolian fallow deer (SI Appendix, Figs. S3 and S4) which may be the result of underlying genetic, not environmental differences (25, 41, 42). Despite the phenotypic distinction, stable and radiogenic isotope data show no difference in fallow deer diets between these regions (SI Appendix, Fig. S6 and S7) (43).

Translocations as Proxies for the Movement of People and Ideologies. Both species of fallow deer were translocated during the Neolithic/Bronze Age (Fig. 2A). We partially sequenced one Persian fallow deer specimen (PT608) from the Bronze Age site of Politiko-Troullia, Cyprus, and two Late Neolithic/Early Bronze Age European fallow deer samples from Ayio Galas Cave, Chios (CH680 and CH681). The Chios samples possessed unique haplotypes (H45 and H46) that are most closely related to individuals from modern Rhodes (H64 and H65). This result supports Masseti et al.’s (7, 8) proposal that the modern Rhodes deer population descends from a Neolithic introduction.

The Neolithic Chios and modern Rhodes deer are more closely related to (and likely descend from) the Balkan rather than Anatolia population. This may seem counter-intuitive, especially given that Rhodes is only 11 miles from mainland Turkey and Chios is <3 miles. However, animal translocations frequently result from factors other than geographic proximity, including attitudes to the natural world, religious ideologies and culture-contacts, issues to which we now turn.

Early domestication. The transfer of animals beyond their natural range has been equated with a closing of human–animal relationships and associated with the process of domestication (44).

According to Masseti (45) and Vigne et al. (12), island *Dama* populations were established specifically for hunting but textual and iconographic evidence from the Bronze Age indicate a more

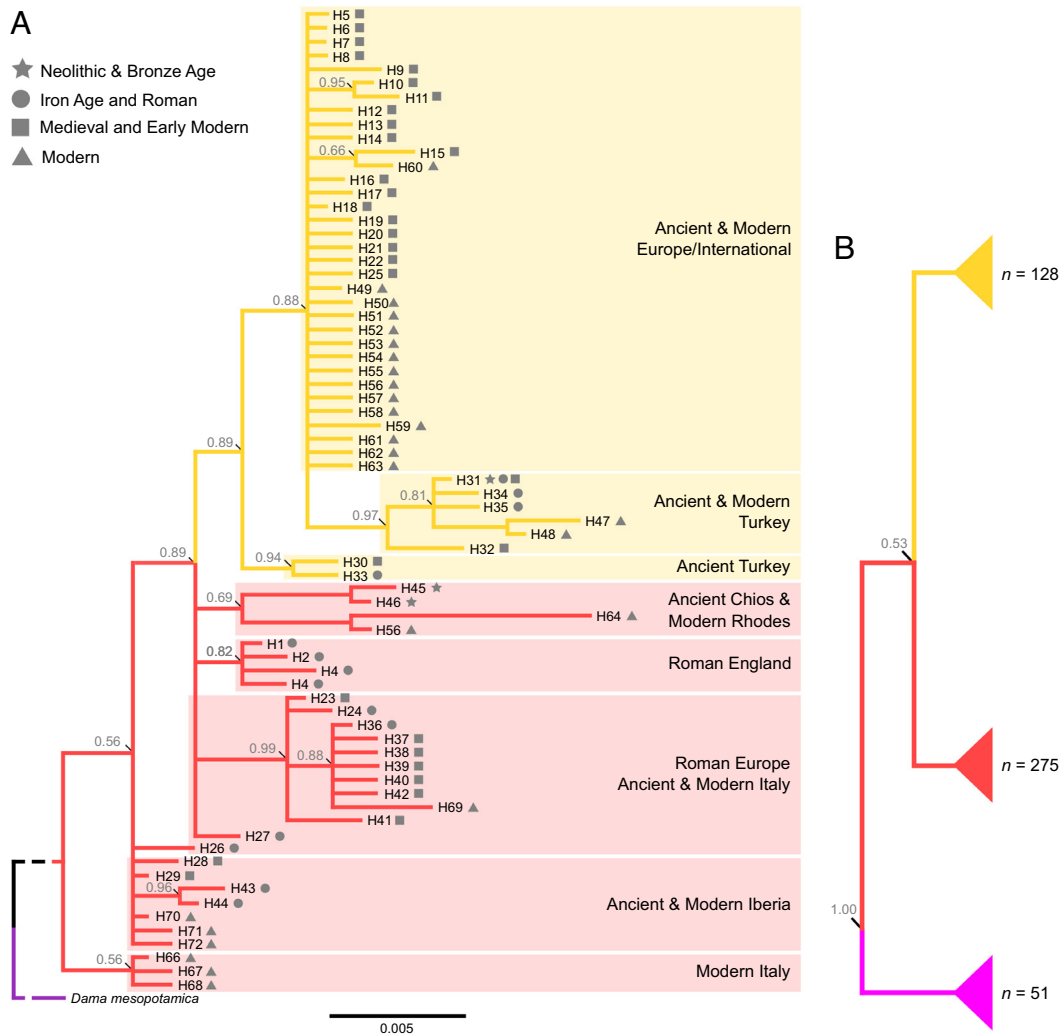


Fig. 1. Phylogenetic trees depicting the relationships between mitochondrial haplotypes derived from ancient and modern European and Persian fallow deer. The tree in Panel (A), rooted with Persian fallow deer and based upon 532 basepairs, shows a distinctive well-supported (0.89 posterior probability) monophyletic clade of European fallow deer (depicted in yellow) and separate lineages of fallow deer associated with a population originally present in the Balkans (depicted in red). Individuals from both these populations (as well as Persian fallow deer) have been transported beyond their native ranges by people at different times (Fig. 2). The collapsed tree in Panel (B) is rooted to *Cervus elaphus* and based upon 128 basepairs (see *SI Appendix, Fig. S1* for detailed tree). It shows how European fallow deer (yellow and red) can be differentiated from the well supported (1.0 posterior probability) clade of Persian fallow deer (purple).

complex relationship between people and fallow deer. For instance, Linear B texts (the earliest form of Greek) list different kinds of fallow deer: those that are wild, those that are tame, and those used in games or for sacrifices, while fresco fragments from Aghia Triadha, Crete, depict a woman leading two fallow deer to a sacrificial altar (11). Similar evidence exists across Anatolia and Egypt (46) and given that the Latin name *Dama* derives from the Persian word for tame or pet (47), there is a compelling case that fallow deer were initially no different in their relationships with humans than other animals that make up the canonical suite of domesticates.

Religion. Many cultures equate geographical distance with supernatural distance perceiving that the further something has traveled, the greater its prestige and power (48). In this way, introduced animals have frequently been viewed as gods (49, 50).

Fallow deer were certainly associated with both the goddess Artemis and her Roman incarnation, Diana (11, 46, 47, 51). There is debate about the geographical genesis of the Artemis myth but the possibility she originated in the Balkans is given credence by the density of both fallow deer remains (Fig. 2A) and Artemis-related paraphernalia, such as fallow deer-shaped religious drinking vessels that have been recovered from the region (52). In Late Minoan

Crete (c.1550–1100 BCE), Linear B texts mention not only fallow deer but also provide the earliest reference to Artemis (10, 53).

Historical studies suggest that the Artemis cult was taken to Sicily by early Greek settlers (54) and statuettes of the goddess have been recovered from the Bronze Age site of Morgantina, together with a shed fallow deer antler (55). This skeletal element could have been transported as an object in its own right [as was the case for other *Dama* body parts recovered from a Phoenician ship-wreck off the coast of Sicily (43, 56)] rather than deriving from an animal that lived on the island. At Morgantina, a small number of post-cranial bones have been tentatively identified as *Dama* (55). Our metrical analysis shows that their size is more consistent with red deer from the island (*SI Appendix, Fig. S5*) though we were unable to confirm their identification genetically.

Roman Empire. The Roman period witnessed a major expansion in fallow deer distribution (Fig. 2B). This was in part due to their connection with the goddess Diana and also linked to the parks and menageries that became increasingly fashionable throughout the Roman Empire.

The earliest evidence for the presence of fallow deer beyond the Mediterranean comes from the highly “Romanised” palatial site

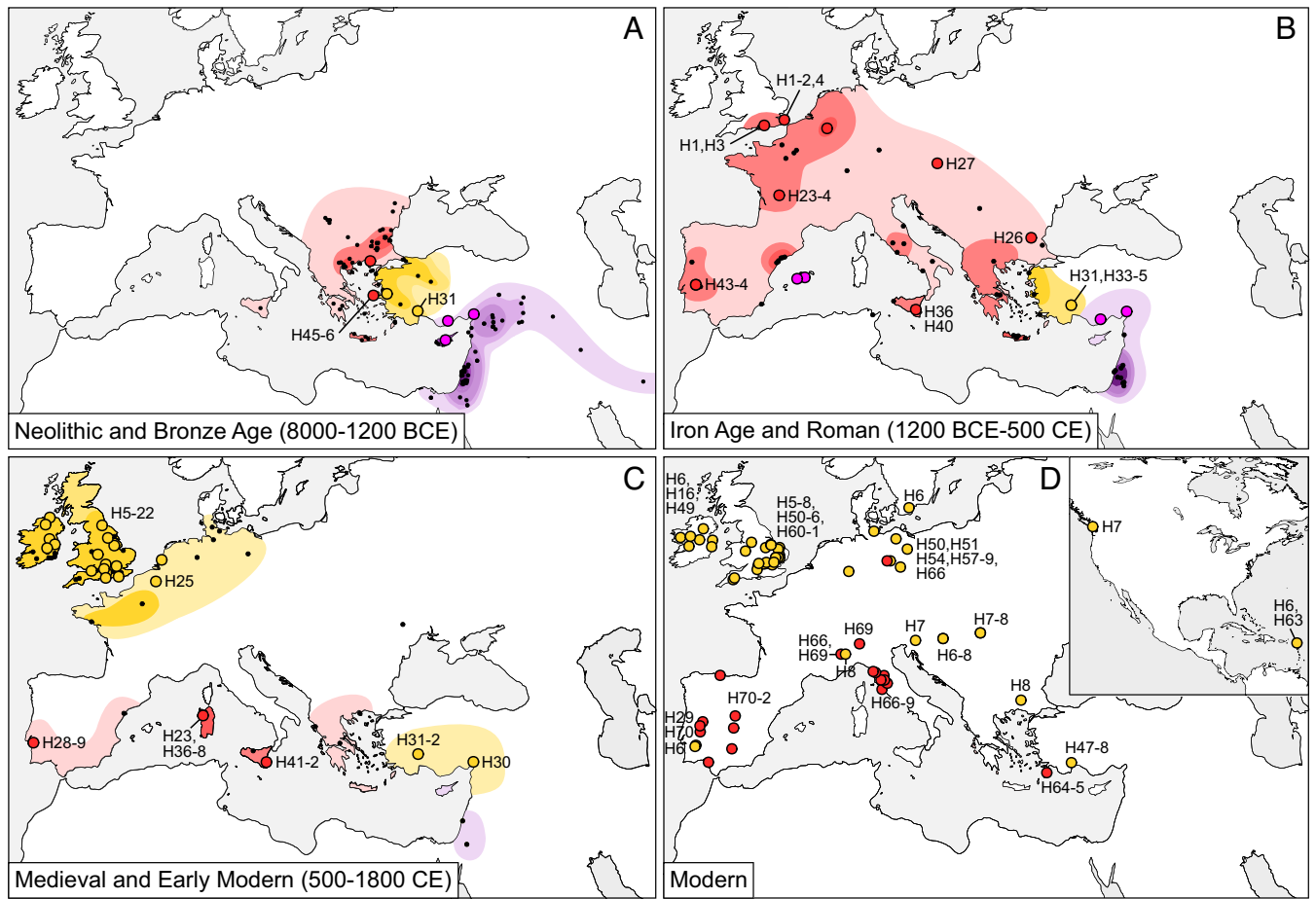


Fig. 2. Maps showing the location and density of European and Persian fallow deer remains in zooarchaeological assemblages (A–C, data from Dataset S2) and modern samples (D, data from Datasets S3 and S4) colored according to genetic results (Fig. 1 and Dataset S1).

of Fishbourne (southern England) that was constructed shortly after the Roman invasion of Britain in 43 CE. Here, *Dama* remains have been directly dated to the 1st century CE (Fig. 3). Multi-element isotope analysis revealed a first-generation import that likely traveled from the Mediterranean in the first few months of its life (Fig. 4). Our evidence also shows that other fallow deer were born and raised at Fishbourne (57) and managed in diverse ways (58).

By the fourth-century CE, fallow deer were established in Britain more broadly, and specimens from Belgium (59) and Portugal (60) have been direct-dated to this period (Figs. 2B and 3). The earliest secure evidence for fallow deer on Sicily dates to the 5th century CE (Fig. 3 and SI Appendix, Fig. S3) and isotope analysis indicates these animals were born and raised on the island (Fig. 4). Genetically, Sicilian deer are consistent with the western Mediterranean (Balkan) clade. They share a haplotype (H36) with animals from Sardinia, where populations were established in the medieval period (61, 62). The Sardinian deer also share haplotypes (H23) with deer from Roman France.

The European fallow deer established in Iberia and Italy both appear to be the progenitors of the modern populations in those regions. For instance, one haplotype (H29) is observed in both medieval and modern Portugal, and is closely related to Roman haplotypes (H43 and H44). Similarly, haplotypes found in ancient Italy (H36) are closely related to those of modern deer (H69). These modern populations are therefore legacies of the Roman Empire and should be treated as living cultural heritage (Fig. 2 B and D).

Large numbers of *Dama* remains have been recovered on Mallorca in contexts dating from the third to the fifth century AD (31). Surprisingly, they were genetically determined to be Persian and not European fallow deer (SI Appendix, Fig. S1), which has implications for understanding Roman and early medieval trade routes. For instance, it is possible they arrived via north Africa where there are iconographic representations of fallow deer. Recently, zooarchaeological evidence for fallow deer has been discovered in Roman North Africa, but their remains are scarce and have not yet been subject to dating or biomolecular analysis which means their species assignment is unconfirmed (63, 64).

Extinctions and population replacements. The native *D. mesopotamica* distribution contracted substantially through time and by the medieval period was replaced in eastern Turkey by *D. dama* (Fig. 2). The Balkan population of *D. dama* was likely extinct by the end of the medieval period (Fig. 2C). Of the translocated populations, the Persian fallow deer of Mallorca went extinct around the seventh century CE (31) and the population on Cyprus disappeared by the late medieval/early modern period (65). The *D. dama* population established in northern Europe during the Roman period vanished rapidly following the Empire's withdrawal, and new populations were re-established centuries later (Fig. 2 B and C).

For Britain, our study overturns the received wisdom that fallow deer were brought from the Norman kingdom of Sicily following the Norman Conquest of 1066 (66, 67). Our skyline plot (S1 Fig. 2) suggests an introduction ~1000 CE and this model is supported by the evidence from the site of Goltho, Lincolnshire. Isotope analyses of the Goltho deer indicate they were born and

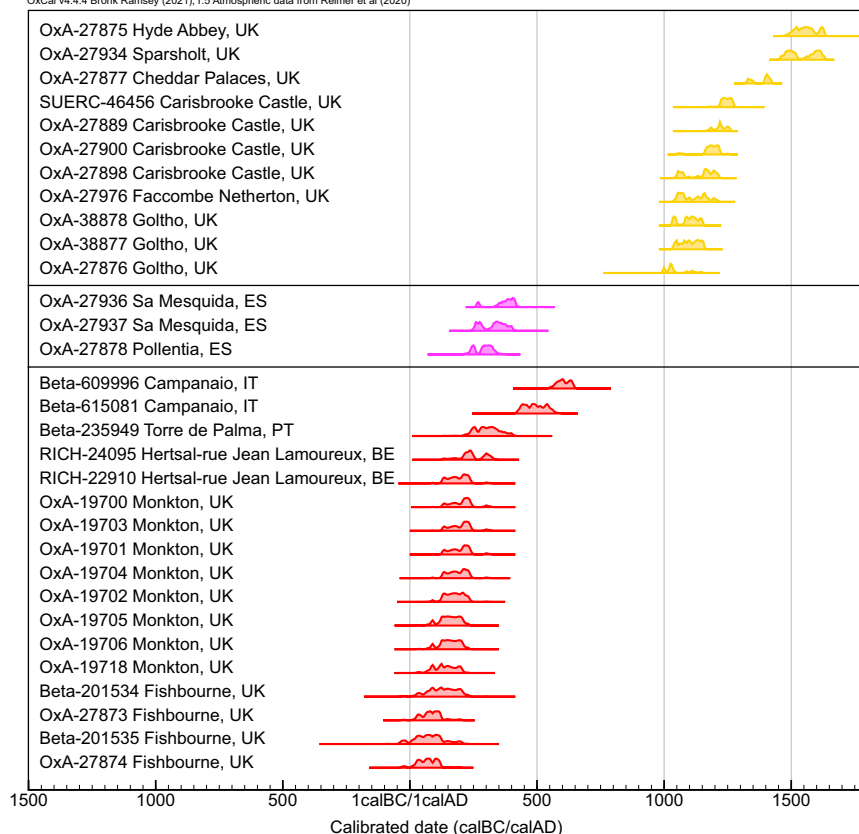


Fig. 3. Calibrated radiocarbon dates of fallow deer, color-coded by genetic results (Fig. 1).

raised locally (ref. 33 and Fig. 4) and direct dating suggests that a population was established before the Norman Conquest, by at least 1000 CE (Fig. 3). The possibility that these deer were derived from Sicily can be discounted from the genetic evidence which demonstrates that the North European medieval deer are unrelated to either the Roman or Western Mediterranean populations (Figs. 1 and 2C). Instead, they are more closely related to Anatolian deer,

both of which lack a 21 bp mtDNA insertion present in 88% of modern Italian and Spanish individuals (4).

Elite exchange and colonial expansion. Following the second introduction to Britain, the maintenance of fallow deer within parks became a statement of elite identity (33) and by the early 13th century, parks and fallow deer had been established in Ireland by Anglo-Norman colonial powers (32, 68, 69). About this time

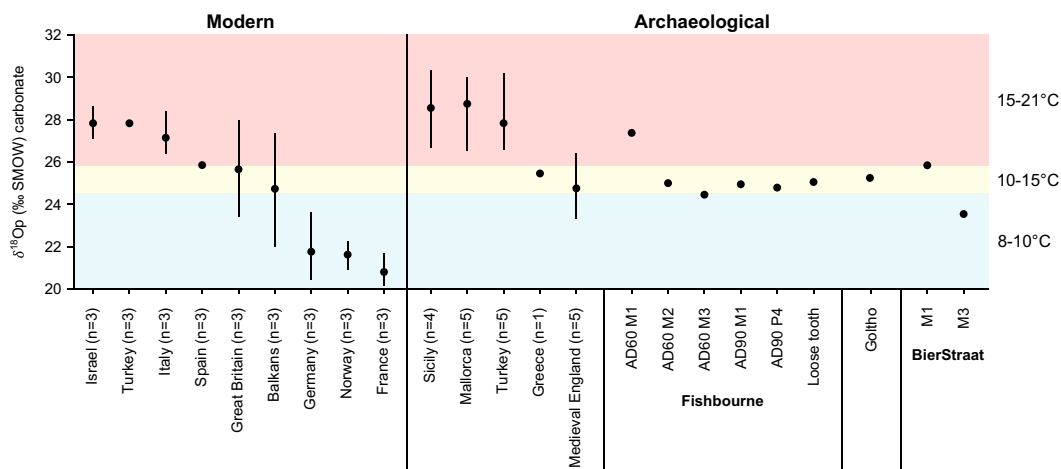


Fig. 4. Range and mean of oxygen isotope data for modern fallow deer (37) compared with ancient specimens. The graph is colored by average temperatures for the regions from which the modern specimens derive. Those from ancient Turkey, Greece, Sicily, Mallorca, and medieval England are consistent with animals that lived and died in those regions. By contrast, the AD60 mandible from Fishbourne Roman Palace has a value for its first molar (M1, which develops <4 mo) that is more in line with those from Turkey, Israel, the Balkans, and Italy. The values for the same deer's second molar (M2, develops 8 to 9 mo) and third molar (M3, develops <18 mo), along with those for the other Fishbourne fallow deer, align with those from modern and medieval England. The specimen from Goltho is consistent with UK values. The specimen from post-medieval Bierstraat-The Hague, the Netherlands, has an M1 value consistent with England but its M3 value is more suggestive of continental northern Europe.

fallow deer were exported to France, sent by King Henry II to stock King Philip II's park at Vincennes (70).

In fact, England was likely the source of the deer reintroduced to other countries of northern Europe. A 16th/17th-century specimen from the Boussu castle, Belgium (71) was found to have a unique haplotype (H25) closely related to the most common English haplotype (Fig. 2C). The 16th/17th-century specimen from Bierstraat-The Hague (Netherlands) yielded insufficient aDNA to understand its relationship to the broader dataset. Nevertheless, the oxygen isotope results suggest that it may have been a first-generation import from England (Fig. 4) and historical evidence supports this possibility. For example, the 17th century Dutch hunting manuscript, *Jacht-Bedryff*, notes that Maurice of Nassau (later Prince of Orange) acquired 100 fallow deer from England to stock The Hague forest (72).

The combination of historical research and genetic results indicates that England was the source of the fallow deer exported across the British Empire. The *Dama* of the Caribbean island of Barbuda (H63) is closely related to English deer, which is consistent with documentary evidence that fallow deer were transported to the island, along with many African slaves, by the Codrington family of Gloucestershire (73). The meaning attached to these Barbudan deer changed through time. Initially, they were a symbol of colonial authority and dominance, but after the slave emancipation of 1834, fallow deer became a symbol of freedom, adopted as Barbuda's national animal. Today, fallow deer are an important part of Barbuda's economy and cultural heritage but, as an introduced "alien" species, they fall outside legal protection. This is despite clear threats from over-hunting and natural disasters, such as hurricane Irma that devastated the island in 2017, which have put the culturally important population at risk (73, 74).

Implications for Fallow Deer Management and Conservation.

The Barbudan fallow deer are just one of many global populations that possess cultural importance. Yet, it is precisely the close association with humans, and particularly their human-assisted translocation, that excludes them from IUCN protection. We argue that the cultural heritage represented by a species should be taken into consideration when conservation decisions are being made.

The results presented here serve as a warning about the vulnerability of island fallow deer. Ancient introductions to Crete, Chios, Cyprus, Sicily, Sardinia, Mallorca, and Roman Britain all went extinct (Fig. 2D). The modern Barbudan population could follow a similar trajectory without a conservation plan akin to that which allowed the Rhodes fallow deer to endure from their Neolithic introduction. It is the deer from Rhodes, along with those from Italy and Portugal, that preserve traces of the now extinct refugial population that once inhabited the Balkans.

There are several active campaigns to re-establish fallow deer in the Balkans and preserve the last remaining wild herd at Daği-Termessos National Park, Turkey. Without knowledge of the species' deep-time biomolecular and phylogeographic history, deer are being sourced from the least appropriate populations. For instance, those being reintroduced to the Balkans possess Anatolian ancestry (Fig. 2D). Furthermore, these Anatolian deer are being introduced to regions that have, for thousands of years, preserved deer with Balkan ancestry (Fig. 2D). Whilst Anatolia-derived deer are increasing in number around the world, the Daği-Termessos herd is still under threat. Our contention is that North European deer of Anatolian ancestry could be introduced to the Daği-Termessos park, whilst Iberian/Italian/Rhodes deer populations would be a better source for Balkan rewilding projects.

Conclusion

This study combined zooarchaeology and ancient and modern biomolecular datasets with evidence from Humanities disciplines to reveal new insights into the history of both fallow deer and the people who transported them. We argue that after the Last Glacial Maximum, Persian fallow deer were more widespread than has previously been proposed, whilst European fallow deer were likely restricted to Anatolia and the Balkans, and two distinct populations existed on either side of the Bosphorus. Our integrated study suggests early translocations of deer as a viable alternative to fallow deer surviving anywhere else outside these regions.

Tracing their spread from these refugia reveals that fallow deer were repeatedly sourced from the furthest available populations: The deer on Neolithic Chios (and likely Rhodes) derived from the Balkans, rather than nearby Anatolia; those on Roman Mallorca were *Dama mesopotamica* rather than the *Dama dama* which could have been acquired from the Iberian peninsula; and the deer reintroduced to medieval Britain were brought from Anatolia instead of Iberia or Italy. This reflects the human desire to possess the exotic which, across cultures, is linked to concepts of power and otherworldliness. Not surprisingly then, the earliest translocations of fallow deer are linked to the religious cults of Artemis and Diana.

Ancient dispersals of people, ideas, and animals are widely celebrated as cultural heritage. However, the more recent the migrations, the more negative the attitudes toward them. Such perceptions can translate into animal management and policy making. For instance, the fallow deer of Rhodes were introduced during the Neolithic and are viewed as a cultural asset, protected by Greek law and featured on the IUCN Red List. The fallow deer of Barbuda are equally culturally significant as the island's national animal, yet they have no legal protection and are labeled as "invasive" within the conservation literature. In truth, they are dismissed only because their introduction occurred too recently to have acquired a patina of age-based authenticity.

Given the planet's biodiversity crisis, it is time to rethink our attitudes to animals. Whilst many species may legitimately be labeled as invasive, this is not true of all translocated populations and some do deserve protection. Preoccupation with native and wild species can come at the expense of (often equally endangered) translocated animals that are not only critically entangled with human history but also offer a conservation resource for replenishing diminished autochthonous populations.

Materials and Methods

Spatiotemporal shifts in European and Persian fallow deer distribution were initially reconstructed through synthesis of the zooarchaeological literature. Reports referencing the presence of fallow deer were collated ($n = 336$) and the frequency of fallow deer (relative to main mammals) within each assemblage was calculated (Dataset S2). The location and frequency data were mapped for three key chronological periods—Neolithic and Bronze Age (8000 to 1200 BCE), Iron Age and Roman (1200 BCE to 500 CE), and medieval and early modern (500 to 1800 century CE)—to create Fig. 2 A–C.

To add resolution to the zooarchaeological survey, 635 osteological samples (archaeological, historical, and modern) were acquired from sites across the fallow deer's ancient and modern range (Dataset S1). Samples were subject to full-suite analysis using the following techniques (SI Appendix for full details):

Zooarchaeological Analysis. Contextual information (site type, date, and associated archival data) was recorded for each specimen, which was identified to skeletal element and examined for evidence of taphonomic process and pathology. Metrical analysis (75) and age determinations (76) were undertaken to assist with species assignment and demographic profiling. Osteometric data were compared

against those published on the Deer Bone Database https://www.nottingham.ac.uk/zooarchaeology/deer_bone/search.php.

Isotope Analysis. A total of 418 specimens were submitted for multi-element isotope analyses, including carbon and nitrogen ($n = 418$), oxygen ($n = 31$), strontium ($n = 18$), and sulfur ($n = 22$). Collagen extractions were undertaken at the University of Nottingham. Other preparation methods and analyses were undertaken at the National Environmental Isotope Facility (formerly NERC Isotope Geosciences Laboratory) at the British Geological Survey, Keyworth, UK. Oxygen data were compared against Miller et al.'s modern baseline (37).

Chronologies and Radiocarbon Dating. Dating of the archaeological specimens was based largely on contextual association. To check issues of stratigraphic migration [which have been noted in smaller animals (50)] and refine the chronology of fallow deer translocations, published radiocarbon dates were collated ($n = 9$) and key specimens ($n = 23$) were directly dated: 21 at the University of Oxford's Radiocarbon Accelerator Unit (ORAU) UK and two at Beta Analytic (USA).

Genetic Analysis. The genetic data generation and analysis was carried out at the Molecular Ecology Group at the Department of Biosciences, Durham University, UK. In order to maximize both the number of variable positions and to be able to compare to data generated from modern specimens, we targeted a 532 bp fragment of the 5' end of the control region of the mitochondrial genome using a combination of overlapping primer pairs. PCR products were sequenced using the Sanger method on an ABI 3100 automated sequencer at DBS Genomics, Durham University.

Out of 561 ancient specimens, we generated the entire fragment from 190 European fallow deer and generated a sequence alignment alongside 219 modern samples (Datasets S3 and S4), published in Baker et al. (4). For discrimination between *D. dama* and *D. mesopotamica*, we used a 128 bp sub-fragment from the same control region sequence. This allowed us to identify 38 ancient specimens as Persian fallow deer (SI Appendix, Fig. S1).

All sequences were aligned using the MUSCLE algorithm (77) as implemented in Geneious v. R6 (www.geneious.com, ref. 78). The relationship amongst haplotypes was examined by constructing both median-joining networks (79) in NETWORK v. 3.1.1.1 (www.fluxus-engineering.com) and a Bayesian phylogeny within MrBayes v. 3.2.6 (80). The demonstrated phylogenetic distinctiveness of the two subspecies *D. dama* and *D. mesopotamica* (31) allowed us to confirm species identifications when zooarch assessments were equivocal. This was based on 18 fixed differences out of the 128bp sequence. Additional details pertaining to the data generation, analyses, and GenBank accession details (Dataset S5) are found in SI Appendix.

Data, Materials, and Software Availability. Genetics data have been deposited in GenBank (<https://www.ncbi.nlm.nih.gov/nucleotide> (35, 36): H1 OR220344 H2 OR220345 H3 OR220346 H4 OR220347 H5 OR220348 H6 OR220349 H7 OR220350 H8 OR220351 H9 OR220352 H10 OR220353 H11 OR220354 H12 OR220355 H13 OR220356 H14 OR220357 H15 OR220358 H16 OR220359 H17 OR220360 H18 OR220361 H19 OR220362 H20 OR220363 H21 OR220364 H22 OR220365 H23 OR220366 H24 OR220367 H25 OR220368 H26 OR220369 H27 OR220370 H28 OR220371 H29 OR220372 H30 OR220373 H31 OR220374 H32 OR220375 H33 OR220376 H34 OR220377 H35 OR220378 H36 OR220379 H37 OR220380 H38 OR220381 H39 OR220382 H40 OR220383 H41 OR220384 H42 OR220385 H43 OR220386 H44 OR220387 H45 OR220388 H46 OR220389 H47 KY564399.1 H48 KY564400.1 H49 KY564401.1 H50 KY564402.1 H51 KY564403.1 H52 KY564404.1 H53 KY564405.1 H54 KY564406.1 H55 KY564407.1 H56 KY564408.1 H57 KY564409.1 H58 KY564410.1 H59 KY564411.1 H60 KY564412.1 H61 KY564413.1 H62 KY564414.1 H63 KY564415.1 H64 KY564416.1 H65 KY564417.1 H66 KY564418.1 H67 KY564419.1 H68 KY564420.1 H69 KY564421.1 H70 KY564422.1 H71 KY564423.1 H72 KY564424.1 H73 KY564425.1 H74 KY564426.1 H75 KY564427.1 H76 KY564428.1 H77 KY564429.1 H78 KY564430.1 H79 KY564431.1 H80 KY564432.1 H81 KY564433.1 H82 KY564434.1 H83 KY564435.1 H84 KY564436.1 H85 KY564437.1 H86 KY564438.1 H87 KY564439.1 H88 KY564440.1 H89 KY564441.1 H90 KY564442.1 H91 KY564443.1 H92 KY564444.1 H93 KY564445.1 H94 KY564446.1 H95 KY564447.1 H96 KY564448.1 H97 KY564449.1 H98 KY564450.1 H99 KY564451.1 H100 KY564452.1 H101 KY564453.1 H102 KY564454.1 H103 KY564455.1 H104 KY564456.1 H105 KY564457.1 H106 KY564458.1 H107 KY564459.1 H108 KY564460.1 H109 KY564461.1 H110 KY564462.1 H111 KY564463.1 H112 KY564464.1 H113 KY564465.1 H114 KY564466.1 H115 KY564467.1 H116 KY564468.1 H117 KY564469.1 H118 KY564470.1 H119 KY564471.1 H120 KY564472.1 H121 KY564473.1 H122 KY564474.1 H123 KY564475.1 H124 KY564476.1 H125 KY564477.1 H126 KY564478.1 H127 KY564479.1 H128 KY564480.1 H129 KY564481.1 H130 KY564482.1 H131 KY564483.1 H132 KY564484.1 H133 KY564485.1 H134 KY564486.1 H135 KY564487.1 H136 KY564488.1 H137 KY564489.1 H138 KY564490.1 H139 KY564491.1 H140 KY564492.1 H141 KY564493.1 H142 KY564494.1 H143 KY564495.1 H144 KY564496.1 H145 KY564497.1 H146 KY564498.1 H147 KY564499.1 H148 KY564500.1 H149 KY564501.1 H150 KY564502.1 H151 KY564503.1 H152 KY564504.1 H153 KY564505.1 H154 KY564506.1 H155 KY564507.1 H156 KY564508.1 H157 KY564509.1 H158 KY564510.1 H159 KY564511.1 H160 KY564512.1 H161 KY564513.1 H162 KY564514.1 H163 KY564515.1 H164 KY564516.1 H165 KY564517.1 H166 KY564518.1 H167 KY564519.1 H168 KY564520.1 H169 KY564521.1 H170 KY564522.1 H171 KY564523.1 H172 KY564524.1 H173 KY564525.1 H174 KY564526.1 H175 KY564527.1 H176 KY564528.1 H177 KY564529.1 H178 KY564530.1 H179 KY564531.1 H180 KY564532.1 H181 KY564533.1 H182 KY564534.1 H183 KY564535.1 H184 KY564536.1 H185 KY564537.1 H186 KY564538.1 H187 KY564539.1 H188 KY564540.1 H189 KY564541.1 H190 KY564542.1 H191 KY564543.1 H192 KY564544.1 H193 KY564545.1 H194 KY564546.1 H195 KY564547.1 H196 KY564548.1 H197 KY564549.1 H198 KY564550.1 H199 KY564551.1 H200 KY564552.1 H201 KY564553.1 H202 KY564554.1 H203 KY564555.1 H204 KY564556.1 H205 KY564557.1 H206 KY564558.1 H207 KY564559.1 H208 KY564560.1 H209 KY564561.1 H210 KY564562.1 H211 KY564563.1 H212 KY564564.1 H213 KY564565.1 H214 KY564566.1 H215 KY564567.1 H216 KY564568.1 H217 KY564569.1 H218 KY564570.1 H219 KY564571.1 H220 KY564572.1 H221 KY564573.1 H222 KY564574.1 H223 KY564575.1 H224 KY564576.1 H225 KY564577.1 H226 KY564578.1 H227 KY564579.1 H228 KY564580.1 H229 KY564581.1 H230 KY564582.1 H231 KY564583.1 H232 KY564584.1 H233 KY564585.1 H234 KY564586.1 H235 KY564587.1 H236 KY564588.1 H237 KY564589.1 H238 KY564590.1 H239 KY564591.1 H240 KY564592.1 H241 KY564593.1 H242 KY564594.1 H243 KY564595.1 H244 KY564596.1 H245 KY564597.1 H246 KY564598.1 H247 KY564599.1 H248 KY564600.1 H249 KY564601.1 H250 KY564602.1 H251 KY564603.1 H252 KY564604.1 H253 KY564605.1 H254 KY564606.1 H255 KY564607.1 H256 KY564608.1 H257 KY564609.1 H258 KY564610.1 H259 KY564611.1 H260 KY564612.1 H261 KY564613.1 H262 KY564614.1 H263 KY564615.1 H264 KY564616.1 H265 KY564617.1 H266 KY564618.1 H267 KY564619.1 H268 KY564620.1 H269 KY564621.1 H270 KY564622.1 H271 KY564623.1 H272 KY564624.1 H273 KY564625.1 H274 KY564626.1 H275 KY564627.1 H276 KY564628.1 H277 KY564629.1 H278 KY564630.1 H279 KY564631.1 H280 KY564632.1 H281 KY564633.1 H282 KY564634.1 H283 KY564635.1 H284 KY564636.1 H285 KY564637.1 H286 KY564638.1 H287 KY564639.1 H288 KY564640.1 H289 KY564641.1 H290 KY564642.1 H291 KY564643.1 H292 KY564644.1 H293 KY564645.1 H294 KY564646.1 H295 KY564647.1 H296 KY564648.1 H297 KY564649.1 H298 KY564650.1 H299 KY564651.1 H300 KY564652.1 H301 KY564653.1 H302 KY564654.1 H303 KY564655.1 H304 KY564656.1 H305 KY564657.1 H306 KY564658.1 H307 KY564659.1 H308 KY564660.1 H309 KY564661.1 H310 KY564662.1 H311 KY564663.1 H312 KY564664.1 H313 KY564665.1 H314 KY564666.1 H315 KY564667.1 H316 KY564668.1 H317 KY564669.1 H318 KY564670.1 H319 KY564671.1 H320 KY564672.1 H321 KY564673.1 H322 KY564674.1 H323 KY564675.1 H324 KY564676.1 H325 KY564677.1 H326 KY564678.1 H327 KY564679.1 H328 KY564680.1 H329 KY564681.1 H330 KY564682.1 H331 KY564683.1 H332 KY564684.1 H333 KY564685.1 H334 KY564686.1 H335 KY564687.1 H336 KY564688.1 H337 KY564689.1 H338 KY564690.1 H339 KY564691.1 H340 KY564692.1 H341 KY564693.1 H342 KY564694.1 H343 KY564695.1 H344 KY564696.1 H345 KY564697.1 H346 KY564698.1 H347 KY564699.1 H348 KY564700.1 H349 KY564701.1 H350 KY564702.1 H351 KY564703.1 H352 KY564704.1 H353 KY564705.1 H354 KY564706.1 H355 KY564707.1 H356 KY564708.1 H357 KY564709.1 H358 KY564710.1 H359 KY564711.1 H360 KY564712.1 H361 KY564713.1 H362 KY564714.1 H363 KY564715.1 H364 KY564716.1 H365 KY564717.1 H366 KY564718.1 H367 KY564719.1 H368 KY564720.1 H369 KY564721.1 H370 KY564722.1 H371 KY564723.1 H372 KY564724.1 H373 KY564725.1 H374 KY564726.1 H375 KY564727.1 H376 KY564728.1 H377 KY564729.1 H378 KY564730.1 H379 KY564731.1 H380 KY564732.1 H381 KY564733.1 H382 KY564734.1 H383 KY564735.1 H384 KY564736.1 H385 KY564737.1 H386 KY564738.1 H387 KY564739.1 H388 KY564740.1 H389 KY564741.1 H390 KY564742.1 H391 KY564743.1 H392 KY564744.1 H393 KY564745.1 H394 KY564746.1 H395 KY564747.1 H396 KY564748.1 H397 KY564749.1 H398 KY564750.1 H399 KY564751.1 H400 KY564752.1 H401 KY564753.1 H402 KY564754.1 H403 KY564755.1 H404 KY564756.1 H405 KY564757.1 H406 KY564758.1 H407 KY564759.1 H408 KY564760.1 H409 KY564761.1 H410 KY564762.1 H411 KY564763.1 H412 KY564764.1 H413 KY564765.1 H414 KY564766.1 H415 KY564767.1 H416 KY564768.1 H417 KY564769.1 H418 KY564770.1 H419 KY564771.1 H420 KY564772.1 H421 KY564773.1 H422 KY564774.1 H423 KY564775.1 H424 KY564776.1 H425 KY564777.1 H426 KY564778.1 H427 KY564779.1 H428 KY564780.1 H429 KY564781.1 H430 KY564782.1 H431 KY564783.1 H432 KY564784.1 H433 KY564785.1 H434 KY564786.1 H435 KY564787.1 H436 KY564788.1 H437 KY564789.1 H438 KY564790.1 H439 KY564791.1 H440 KY564792.1 H441 KY564793.1 H442 KY564794.1 H443 KY564795.1 H444 KY564796.1 H445 KY564797.1 H446 KY564798.1 H447 KY564799.1 H448 KY564800.1 H449 KY564801.1 H450 KY564802.1 H451 KY564803.1 H452 KY564804.1 H453 KY564805.1 H454 KY564806.1 H455 KY564807.1 H456 KY564808.1 H457 KY564809.1 H458 KY564810.1 H459 KY564811.1 H460 KY564812.1 H461 KY564813.1 H462 KY564814.1 H463 KY564815.1 H464 KY564816.1 H465 KY564817.1 H466 KY564818.1 H467 KY564819.1 H468 KY564820.1 H469 KY564821.1 H470 KY564822.1 H471 KY564823.1 H472 KY564824.1 H473 KY564825.1 H474 KY564826.1 H475 KY564827.1 H476 KY564828.1 H477 KY564829.1 H478 KY564830.1 H479 KY564831.1 H480 KY564832.1 H481 KY564833.1 H482 KY564834.1 H483 KY564835.1 H484 KY564836.1 H485 KY564837.1 H486 KY564838.1 H487 KY564839.1 H488 KY564840.1 H489 KY564841.1 H490 KY564842.1 H491 KY564843.1 H492 KY564844.1 H493 KY564845.1 H494 KY564846.1 H495 KY564847.1 H496 KY564848.1 H497 KY564849.1 H498 KY564850.1 H499 KY564851.1 H500 KY564852.1 H501 KY564853.1 H502 KY564854.1 H503 KY564855.1 H504 KY564856.1 H505 KY564857.1 H506 KY564858.1 H507 KY564859.1 H508 KY564860.1 H509 KY564861.1 H510 KY564862.1 H511 KY564863.1 H512 KY564864.1 H513 KY564865.1 H514 KY564866.1 H515 KY564867.1 H516 KY564868.1 H517 KY564869.1 H518 KY564870.1 H519 KY564871.1 H520 KY564872.1 H521 KY564873.1 H522 KY564874.1 H523 KY564875.1 H524 KY564876.1 H525 KY564877.1 H526 KY564878.1 H527 KY564879.1 H528 KY564880.1 H529 KY564881.1 H530 KY564882.1 H531 KY564883.1 H532 KY564884.1 H533 KY564885.1 H534 KY564886.1 H535 KY564887.1 H536 KY564888.1 H537 KY564889.1 H538 KY564890.1 H539 KY564891.1 H540 KY564892.1 H541 KY564893.1 H542 KY564894.1 H543 KY564895.1 H544 KY564896.1 H545 KY564897.1 H546 KY564898.1 H547 KY564899.1 H548 KY564900.1 H549 KY564901.1 H550 KY564902.1 H551 KY564903.1 H552 KY564904.1 H553 KY564905.1 H554 KY564906.1 H555 KY564907.1 H556 KY564908.1 H557 KY564909.1 H558 KY564910.1 H559 KY564911.1 H560 KY564912.1 H561 KY564913.1 H562 KY564914.1 H563 KY564915.1 H564 KY564916.1 H565 KY564917.1 H566 KY564918.1 H567 KY564919.1 H568 KY564920.1 H569 KY564921.1 H570 KY564922.1 H571 KY564923.1 H572 KY564924.1 H573 KY564925.1 H574 KY564926.1 H575 KY564927.1 H576 KY564928.1 H577 KY564929.1 H578 KY564930.1 H579 KY564931.1 H580 KY564932.1 H581 KY564933.1 H582 KY564934.1 H583 KY564935.1 H584 KY564936.1 H585 KY564937.1 H586 KY564938.1 H587 KY564939.1 H588 KY564940.1 H589 KY564941.1 H590 KY564942.1 H591 KY564943.1 H592 KY564944.1 H593 KY564945.1 H594 KY564946.1 H595 KY564947.1 H596 KY564948.1 H597 KY564949.1 H598 KY564950.1 H599 KY564951.1 H600 KY564952.1 H601 KY564953.1 H602 KY564954.1 H603 KY564955.1 H604 KY564956.1 H605 KY564957.1 H606 KY564958.1 H607 KY564959.1 H608 KY564960.1 H609 KY564961.1 H610 KY564962.1 H611 KY564963.1 H612 KY564964.1 H613 KY564965.1 H614 KY564966.1 H615 KY564967.1 H616 KY564968.1 H617 KY564969.1 H618 KY564970.1 H619 KY564971.1 H620 KY564972.1 H621 KY564973.1 H622 KY564974.1 H623 KY564975.1 H624 KY564976.1 H625 KY564977.1 H626 KY564978.1 H627 KY564979.1 H628 KY564980.1 H629 KY564981.1 H630 KY564982.1 H631 KY564983.1 H632 KY564984.1 H633 KY564985.1 H634 KY564986.1 H635 KY564987.1 H636 KY564988.1 H637 KY564989.1 H638 KY564990.1 H639 KY564991.1 H640 KY564992.1 H641 KY564993.1 H642 KY564994.1 H643 KY564995.1 H644 KY564996.1 H645 KY564997.1 H646 KY564998.1 H647 KY564999.1 H648 KY565000.1 H649 KY565001.1 H650 KY565002.1 H651 KY565003.1 H652 KY565004.1 H653 KY565005.1 H654 KY565006.1 H655 KY565007.1 H656 KY565008.1 H657 KY565009.1 H658 KY565010.1 H659 KY565011.1 H660 KY565012.1 H661 KY565013.1 H662 KY565014.1 H663 KY565015.1 H664 KY565016.1 H665 KY565017.1 H666 KY565018.1 H667 KY565019.1 H668 KY565020.1 H669 KY565021.1 H670 KY565022.1 H671 KY565023.1 H672 KY565024.1 H673 KY565025.1 H674 KY565026.1 H675 KY565027.1 H676 KY565028.1 H677 KY565029.1 H678 KY565030.1 H679 KY565031.1 H680 KY565032.1 H681 KY565033.1 H682 KY565034.1 H683 KY565035.1 H684 KY565036.1 H685 KY565037.1 H686 KY565038.1 H687 KY565039.1 H688 KY565040.1 H689 KY565041.1 H690 KY565042.1 H691 KY565043.1 H692 KY565044.1 H693 KY565045.1 H694 KY565046.1 H695 KY565047.1 H696 KY565048.1 H697 KY565049.1 H698 KY565050.1 H699 KY565051.1 H700 KY565052.1 H701 KY565053.1 H702 KY565054.1 H703 KY565055.1 H704 KY565056.1 H705 KY565057.1 H706 KY565058.1 H707 KY565059.1 H708 KY565060.1 H709 KY565061.1 H710 KY565062.1 H711 KY565063.1 H712 KY565064.1 H713 KY565065.1 H714 KY565066.1 H715 KY565067.1 H716 KY565068.1 H717 KY565069.1 H718 KY565070.1 H719 KY565071.1 H720 KY565072.1 H721 KY565073.1 H722 KY565074.1 H723 KY565075.1 H724 KY565076.1 H725 KY565077.1 H726 KY565078.1 H727 KY565079.1 H728 KY565080.1 H729 KY565081.1 H730 KY565082.1 H731 KY565083.1 H732 KY565084.1 H733 KY565085.1 H734 KY565086.1 H735 KY565087.1 H736 KY565088.1 H737 KY565089.1 H738 KY565090.1 H739 KY565091.1 H740 KY565092.1 H741 KY565093.1 H742 KY565094.1 H743 KY565095.1 H744 KY565096.1 H745 KY565097.1 H746 KY565098.1 H747 KY565099.1 H748 KY565100.1 H749 KY565101.1 H750 KY565102.1 H751 KY565103.1 H752 KY565104.1 H753 KY565105.1 H754 KY565106.1 H755 KY565107.1 H756 KY565108.1 H757 KY565109.1 H758 KY565110.1 H759 KY565111.1 H760 KY565112.1 H761 KY565113.1 H762 KY565114.1 H763 KY565115.1 H764 KY565116.1 H765 KY565117.1 H766 KY565118.1 H767 KY565119.1 H768 KY565120.1 H769 KY565121.1 H770 KY565122.1 H771 KY565123.1 H772 KY565124.1 H773 KY565125.1 H774 KY565126.1 H775 KY565127.1 H776 KY565128.1 H777 KY565129.1 H778 KY565130.1 H779 KY565131.1 H780 KY565132.1 H781 KY565133.1 H782 KY565134.1 H783 KY565135.1 H784 KY565136.1 H785 KY565137.1 H786 KY565138.1 H787 KY565139.1 H788 KY565140.1 H789 KY565141.1 H790 KY565142.1 H791 KY565143.1 H792 KY565144.1 H793 KY565145.1 H794 KY565146.1 H795 KY565147.1 H796 KY565148.1 H797 KY565149.1 H798 KY565150.1 H799 KY565151.1 H800 KY565152.1 H801 KY565153.1 H802 KY565154.1 H803 KY565155.1 H804 KY565156.1 H805 KY565157.1 H806 KY565158.1 H807 KY565159.1 H808 KY565160.1 H809 KY565161.1 H810 KY565162.1 H811 KY565163.1 H812 KY565164.1 H813 KY565165.1 H814 KY565166.1 H815 KY565167.1 H816 KY565168.1 H817 KY565169.1 H818 KY565170.1 H819 KY565171.1 H820 KY565172.1 H821 KY565173.1 H822 KY565174.1 H823 KY565175.1 H824 KY565176.1 H825 KY565177.1 H826 KY565178.1 H827 KY565179.1 H828 KY565180.1 H829 KY565181.1 H830 KY565182.1 H831 KY565183.1 H832 KY565184.1 H833 KY565185.1 H834 KY565186.1 H835 KY565187.1 H836 KY565188.1 H837 KY565189.1 H838 KY565190.1 H839 KY565191.1 H840 KY565192.1 H841 KY565193.1 H842 KY565194.1 H843 KY565195.1 H844 KY565196.1 H845 KY565197.1 H846 KY565198.1 H847 KY565199.1 H848 KY565200.1 H849 KY565201.1 H850 KY565202.1 H851 KY565203.1 H852 KY565204.1 H853 KY565205.1 H854 KY565206.1 H855 KY565207.1 H856 KY565208.1 H857 KY565209.1 H858 KY565210.1 H859 KY565211.1 H860 KY565212.1 H861 KY565213.1 H862 KY565214.1 H863 KY565215.1 H864 KY565216.1 H865 KY565217.1 H866 KY565218.1 H867 KY565219.1 H868 KY565220.1 H869 KY565221.1 H870 KY565222.1 H871 KY565223.1 H872 KY565224.1 H873 KY565225.1 H874 KY565226.1 H875 KY565227.1 H876 KY565228.1 H877 KY565229.1 H878 KY565230.1 H879 KY565231.1 H880 KY565232.1 H881 KY565233.1 H882 KY565234.1 H883 KY565235.1 H884 KY565236.1 H885 KY565237.1 H886 KY565238.1 H887 KY565239.1 H888 KY565240.1 H88

1. N. Y. Werner, A. Rabiei, D. Saltz, J. Daujat, K. Baker, *Dama mesopotamica* (errata version published in 2016). The IUCN Red List of Threatened Species 2015: e.T6232A97672550. <https://dx.doi.org/10.2305/IUCN.UK.2015-4.RLTS.T6232A2164332.en>. Accessed 4 January 2024.
2. D. Chapman, *Fallow Deer: Their History, Distribution, and Biology* (Coch-y-bonddu Books, Machynlleth, United Kingdom, 1997).
3. N. G. Chapman, D. I. Chapman, The distribution of fallow deer: A worldwide review. *Mamm. Rev.* **10**, 61–138 (1980).
4. K. H. Baker *et al.*, Strong population structure in a species manipulated by humans since the Neolithic: The European fallow deer (*Dama dama* dama). *Hereditas* **119**, 16–26 (2017).
5. Z. Arslangüdoğdu *et al.*, Development of the population of the European Fallow Deer, *Dama dama* dama (Linnaeus, 1758), Turkey. *Zool. Middle East* **49**, 3–12 (2010).
6. M. Masseti, D. Mertzani, *Dama dama*. The IUCN Red List of Threatened Species 2008: e.T42188A10656554. <https://dx.doi.org/10.2305/IUCN.UK.2008.RLTS.T42188A10656554.en>. Accessed 4 January 2024.
7. M. Masseti, A. Cavallaro, E. Pecchioli, C. Vernesi, Artificial occurrence of the Fallow Deer, *Dama dama* (L., 1758), on the Island of Rhodes (Greece): insight from mtDNA analysis. *Hum. Evol.* **21**, 167–175 (2006).
8. M. Masseti, E. Pecchioli, C. Vernesi, Phylogeography of the last surviving populations of Rhodian and Anatolian fallow deer (*Dama dama* L., 1758). *Biol. J. Linn. Soc. Lond.* **93**, 835–844 (2008).
9. V. Isaakidou *et al.*, Changing land use and political economy at Neolithic and Bronze Age Knossos, Crete: Stable carbon ($\delta^{13}\text{C}$) and nitrogen ($\delta^{15}\text{N}$) isotope analysis of charred crop grains and faunal bone collagen. *Proc. Prehist. Soc.* **88**, 155–191 (2022).
10. K. M. Harris, *The Social Role of Hunting and Wild Animals in Late Bronze Age Crete: A Social Zooarchaeological Analysis* (University of Southampton, 2014).
11. E. Yannouli, K. Trantalidou, "The fallow deer (*Dama dama* Linnaeus, 1758): Archaeological presence and representation in Greece" in *The Holocene History of the European Vertebrate Fauna: Modern Aspects of Research*, N. Benecke, Ed. (Verlag Marie Leidorf GmbH, 1999), pp. 247–281.
12. J.-D. Vigne, J. Daujat, H. Monchot, First introduction and early exploitation of the Persian fallow deer on Cyprus (8000–6000 cal. BC). *Int. J. Osteoarchaeol.* **26**, 853–866 (2016).
13. T. Daszkiewicz *et al.*, A comparison of the quality of the Longissimus lumborum muscle from wild and farm-raised fallow deer (*Dama dama* L.). *Small Rumin. Res.* **129**, 77–83 (2015).
14. A. Linderholm, G. Larson, The role of humans in facilitating and sustaining coat colour variation in domestic animals. *Semin. Cell Dev. Biol.* **24**, 587–593 (2013).
15. G. Larson *et al.*, Current perspectives and the future of domestication studies. *Proc. Natl. Acad. Sci. U.S.A.* **111**, 6139–6146 (2014).
16. T. G. Martin, P. Arcese, N. Scheerder, Browsing down our natural heritage: Deer impacts on vegetation structure and songbird populations across an island archipelago. *Biol. Conserv.* **144**, 459–469 (2011).
17. F. Ferretti, S. Lovari, "Introducing aliens: Problems associated with invasive exotics" in *Behaviour and Management of European Ungulates*, R. Putman, M. Apollonio, Eds. (Whittles Publishing, Dunbeath, United Kingdom, 2014), pp. 78–109.
18. C. Chakanya, A.-E.-M. Dokora, V. Muchenje, L. C. Hoffman, The fallow deer (*Dama* spp.): endangered or not? *Zool. Gart.* **85**, 160–172 (2016).
19. F. E. Zachos, G. B. Hartl, Phylogeography, population genetics and conservation of the European red deer *Cervus elaphus*. *Mamm. Rev.* **41**, 138–150 (2011).
20. R. F. Carden *et al.*, Phylogeographic, ancient DNA, fossil and morphometric analyses reveal ancient and modern introductions of a large mammal: The complex case of red deer (*Cervus elaphus*) in Ireland. *Quat. Sci. Rev.* **42**, 74–84 (2012).
21. R. S. Sommer, J. Kalbe, J. Ekström, N. Benecke, R. Liljegren, Range dynamics of the reindeer in Europe during the last 25,000 years. *J. Biogeogr.* **41**, 298–306 (2014).
22. D. W. G. Stanton, J. A. Mulville, M. W. Bruford, Colonization of the Scottish islands via long-distance Neolithic transport of red deer (*Cervus elaphus*). *Proc. Biol. Sci.* **283**, 20160095 (2016).
23. A.-K. Salmi, "Introduction: Perspectives on the history and ethnoarchaeology of Reindeer domestication and herding" in *Domestication in Action: Past and Present Human-Reindeer Interaction in Northern Fennoscandia*, A.-K. Salmi Ed. (Springer, 2022), pp. 3–33.
24. M. Masseti, M. Rustioni, Considerazioni preliminari sulla diffusione di *Dama dama* (Linnaeus, 1758) durante le epoche tardigliacale e postglaciale nell'Italia mediterranea. *Studi per l'Ecologia del Quaternario* **10**, 93–119 (1988).
25. N. Karastoyanova, J. Gorczyk, N. Spassov, The natural history of the fallow deer, *Dama dama* (Linnaeus, 1758) in Bulgaria in prehistory and new evidence for the existence of an autochthonous Holocene population in the Balkans. *Int. J. Osteoarchaeol.* **30**, 616–628 (2020).
26. T. O'Connor, N. Sykes, *Extinctions and Invasions: A Social History of British Fauna*, T. O'Connor, N. J. Sykes, Eds. (Windgather Press, Oxford, United Kingdom, 2010).
27. S. Kusza, M. R. Ashrafzadeh, B. Tóth, A. Jávori, Maternal genetic variation in the northeastern Hungarian fallow deer (*Dama dama*) population. *Mamm. Biol.* **93**, 21–28 (2018).
28. L. A. F. Frantz, D. G. Bradley, G. Larson, L. Orlando, Animal domestication in the era of ancient genomics. *Nat. Rev. Genet.* **21**, 449–460 (2020).
29. M. Masseti, C. Vernesi, "Historic zoology of the European fallow deer, *Dama dama* dama: Evidence from biogeography, archaeology and genetics", K. Baker, R. Carden, R. Madgwick, Eds. (Windgather Press, Oxford, United Kingdom, 2014).
30. N. J. Sykes *et al.*, New evidence for the establishment and management of the European fallow deer (*Dama dama* dama) in Roman Britain. *J. Archaeol. Sci.* **38**, 156–165 (2011).
31. A. Valenzuela *et al.*, Both introduced and extinct: The fallow deer of Roman Mallorca. *J. Archaeol. Sci. Rep.* **9**, 168–177 (2016).
32. F. Beglane *et al.*, "Ireland's fallow deer: Their historical, archaeological and biomolecular records" in *Proceedings of the Royal Irish Academy: Archaeology, Culture, History, Literature* (2018), vol. 118C, pp. 141–165.
33. N. Sykes *et al.*, Wild to domestic and back again: The dynamics of fallow deer management in medieval England (c. 11th–16th century AD). *Sci. Technol. Archaeol. Res.* **2**, 113–126 (2016).
34. K. H. Baker *et al.*, Ancient and modern DNA tracks temporal and spatial population dynamics in the European fallow deer since the Eemian interglacial. *Sci. Rep.*, in press.
35. K. H. Baker *et al.*, OR220344-OR220389. Genbank. <https://www.ncbi.nlm.nih.gov/nuccore>. Deposited 30 June 2023.
36. K. H. Baker *et al.*, OR531435-OR531443. Genbank. <https://www.ncbi.nlm.nih.gov/nuccore>. Deposited 8 September 2023.
37. H. Miller *et al.*, The relationship between the phosphate and structural carbonate fractionation of fallow deer bioapatite in tooth enamel. *Rapid Commun. Mass Spectrom.* **33**, 151–164 (2019).
38. F. Santucci, B. C. Emerson, G. M. Hewitt, Mitochondrial DNA phylogeography of European hedgehogs. *Mol. Ecol.* **7**, 1163–1172 (1998).
39. R. Bilgin, Back to the suture: The distribution of intraspecific genetic diversity in and around anatolia. *Int. J. Mol. Sci.* **12**, 4080–4103 (2011).
40. P. Alexandri *et al.*, The Balkans and the colonization of Europe: The post-glacial range expansion of the wild boar, *Sus scrofa*. *J. Biogeogr.* **39**, 713–723 (2012).
41. N. Spassov, N. Iliev, "Animal remains from the submerged late Eneolithic - early Bronze Age settlement near Sozopol (south Bulgarian Black Sea coast)" in *Proceedings of the International Symposium Thracia Pontica VI* (Centre of Underwater Archaeology, Bulgaria, 1994), pp. 287–314.
42. M. Fabis, "Troia and fallow deer" in *Troia and the Troad*, G. A. Wagner, E. Pernicka, H.-P. Uerpmann, Eds. (Springer, 2003), pp. 263–275.
43. H. Miller *et al.*, Dead or alive? Investigating long-distance transport of live fallow deer and their body parts in antiquity. *Environ. Archaeol.* **21**, 246–259 (2016).
44. R. H. Meadow, "Osteological evidence for the process of animal domestication" in *The Walking Larder*, J. Clutton-Brock, Eds. (Routledge, 1989).
45. M. Masseti, M. Island of Deer: Natural History of the Fallow deer of Rhodes and the vertebrates of the Dodecanese (Greece). (Environmental Organisation, Rhodes, 2002).
46. J. Larson, "Venison for Artemis? The problem of deer sacrifice" in *Animal Sacrifice in the Ancient Greek World*, S. Hitch, Ed. (Cambridge University Press, 2017), pp. 48–62.
47. G. Reinken, Wieder-Verbreitung, Verwendung und Namensgebung des Damhirsches *Cervus dama* L. Europa. *Zeitschrift für Jagdwissenschaft* **43**, 197–206 (1997).
48. M. W. Helms, *Craft and the Kingly Ideal: Art, Trade, and Power* (University of Texas Press, Austin, TX, 2013).
49. N. Sykes, *Beastly Questions: Animal Answers to Archaeological Issues* (Bloomsbury Publishing, London, UK, 2014).
50. J. Best *et al.*, Redefining the timing and circumstances of the chicken's introduction to Europe and north-west Africa. *Antiquity* **96**, 868–882 (2022).
51. S. Klinger, A Terracotta Statuette of Artemis with a Deer at the Israel Museum. *Israel Exploration J.* **51**, 208–224 (2001).
52. H. Miller, N. Sykes, C. Ward, "Diana and her deer: the movement of mythology and medicine" in *The Role of Zooarchaeology in the study of the Western Roman Empire*, Allen M. G., Ed. (2019), vol. 107, pp. 101–112.
53. M. L. Nosch, "Approaches to Artemis in Bronze Age Greece" in *From Artemis to Diana: The Goddess of Man and Beast*, T. Fischer-Hansen, B. Poulsen, Eds. (Danish Studies in Classical Archaeology Museum Tusulanum Press, Copenhagen, 2009), pp. 21–40.
54. T. Fischer-Hansen, "Artemis in Sicily and south Italy: a picture of diversity" in *From Artemis to Diana: The Goddess of Man and Beast*, T. Fischer-Hansen, B. Poulsen, Eds. (Danish Studies in Classical Archaeology Museum Tusulanum Press, Copenhagen, 2009), pp. 207–260.
55. L. Bartosiewicz "Faunal remains" in *The Archaeology of Houses at Morgantina, Sicily: Excavations of Later Prehistoric Contexts on the Cittadella (1989-2004)*, R. Leighton, Ed. (Accordia Research Institute, University of London, 2012), pp. 153–171.
56. M. L. Ryder, "Some Phoenician animal remains from Sicily" in *Archaeozoological Studies*, A. T. Clason, Ed. (North-Holland Publishing, New York, 1975).
57. N. J. Sykes, J. White, T. E. Hayes, M. R. Palmer, Tracking animals using strontium isotopes in teeth: The role of fallow deer (*Dama dama*) in Roman Britain. *Antiquity* **80**, 948–959 (2006).
58. R. Madgwick *et al.*, Fallow deer (*Dama dama* dama) management in Roman South-East Britain. *Archaeol. Anthropol. Sci.* **5**, 111–122 (2013).
59. F. Pigière, D. Henrard, N. Sykes, N. Suarez-Gonzalez, G. Sonet, The introduction of the European fallow deer to the northern provinces of the Roman Empire: A multi-proxy approach to the Herstal skeleton (Belgium). *Antiquity* **94**, 1501–1519 (2020).
60. S. Davis, M. MacKinnon, Did the Romans bring fallow deer to Portugal? *Environ. Archaeol.* **14**, 15–26 (2009).
61. B. Wilkens, *Archeozoologia: il Mediterraneo, la storia, la Sardegna* (Editrice Documenta Sarda, 2012).
62. B. Baldino *et al.*, L'economia animale dal Medioevo all'età moderna nella Sardegna nord-occidentale. *Sardinia, Corsica et Baleares Antiquae: Int. J. Archaeol.* **6**, 109–161 (2008).
63. T. Oueslati, M. Ennaïfer, "La maison des deux Chasses (Kélibia, Tunisie). Approche croisée de l'étude des tableaux de vénérie vandalo-byzantins et des ossements animaux (v-vi siècles)" in *L'homme et l'animal au Maghreb, de la Préhistoire au Moyen Âge*, V. Blanc-Bijon *et al.*, Eds. (Presses universitaires de Provence, Aix-en-Provence, 2014), pp. 307–315.
64. M. Azaza, L. Colominas, The Roman introduction and exportation of animals into Tunisia: Linking archaeozoology with textual and iconographic evidence. *J. Archaeol. Sci. Rep.* **29**, 102076 (2020).
65. J. Daujat, *Ungulate Invasion on a Mediterranean Island: The Cypriot Mesopotamian Fallow Deer over the Past 10,000 Years* (Muséum National d'histoire Naturelle Paris, 2013).
66. N. J. Sykes, *The Norman Conquest: A Zooarchaeological Perspective* (Archaeopress, Oxford, United Kingdom, 2007).
67. N. Sykes, R. F. Carden, Were Fallow Deer Spotted (OE *pohha/*pocca) in Anglo-Saxon England? Reviewing the Evidence for *Dama dama* in Early Medieval Europe. *Mediev. Archaeol.* **55**, 139–162 (2011).
68. F. Beglane, *Anglo-Norman Parks in Medieval Ireland* (Four Courts Press, Dublin, Ireland, 2015).
69. F. Beglane, The social significance of game in the diet of later medieval Ireland. *Proc. Royal Irish Acad. Archaeol. Culture History Literature* **115**, 167–196 (2015).
70. B. Clavel, Chasse aux daims à Vincennes à la Renaissance. *Archéopages* **28**, 45 (2010).
71. A. Alen, F. Pigière, W. Wouters, W. Van Neer, Boussu-Boussu: la faune du château de Boussu. *Chronique de l'Archéologie Wallonne* **20**, 108–110 (2013).
72. A. E. H. Swaen, *Jacht-Bedryff, naar het handschrift in de Koninklijke Bibliotheek te's-Gravenhage* (E. J. Brill, Leiden, 1948).
73. S. Perdikaris *et al.*, From Icon of Empire to National Emblem: New Evidence for the Fallow Deer of Barbuda. *Environ. Archaeol.* **23**, 47–55 (2018).
74. N. Sykes, "Fallow deer: The unprotected biocultural heritage of Barbuda" in *Barbuda: Changing Times, Changing Tides*, S. Perdikaris, R. Boger, Eds. (Routledge, 2022).
75. A. Von den Driesch, *A Guide to the Measurement of Animal Bones from Archaeological Sites* (Peabody Museum Press, Cambridge, MA, 1976), vol. 1.
76. F. Bowen *et al.*, *Dama* Dentition: A new tooth eruption and wear method for assessing the age of fallow deer (*Dama dama*). *Int. J. Osteoarchaeol.* **26**, 1089–1098 (2016).
77. R. C. Edgar, MUSCLE: Multiple sequence alignment with high accuracy and high throughput. *Nucleic Acids Res.* **32**, 1792–1797 (2004).
78. S. Buxton, M. Cheung, A. Cooper, J. Heled, M. Kearse, Geneious version R6. <https://www.geneious.com>. Accessed 4 March 2022.
79. H. J. Bandelt, P. Forster, A. Röhl, Median-joining networks for inferring intraspecific phylogenies. *Mol. Biol. Evol.* **16**, 37–48 (1999).
80. J. P. Huelsenbeck, F. Ronquist, MRBAYES: Bayesian inference of phylogenetic trees. *Bioinformatics* **17**, 754–755 (2001).