

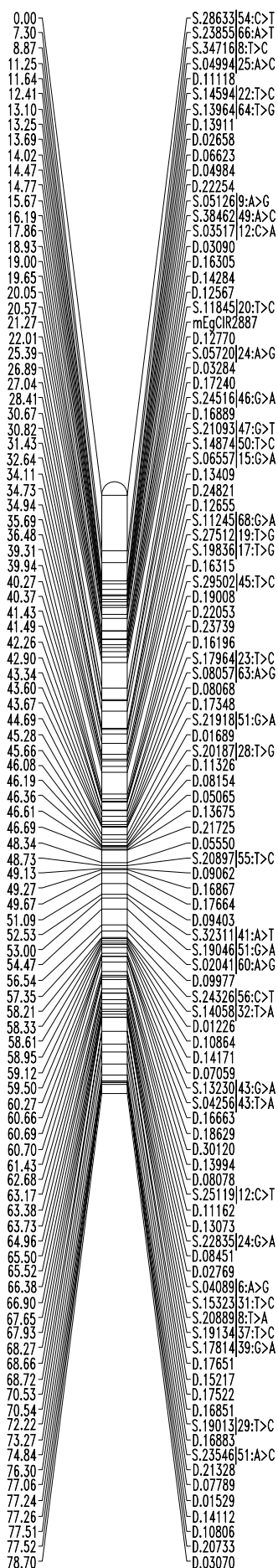
“High Density SNP and DArT-based Genetic Linkage Maps of Two Closely Related Oil Palm Populations”

Journal of Applied Genetics

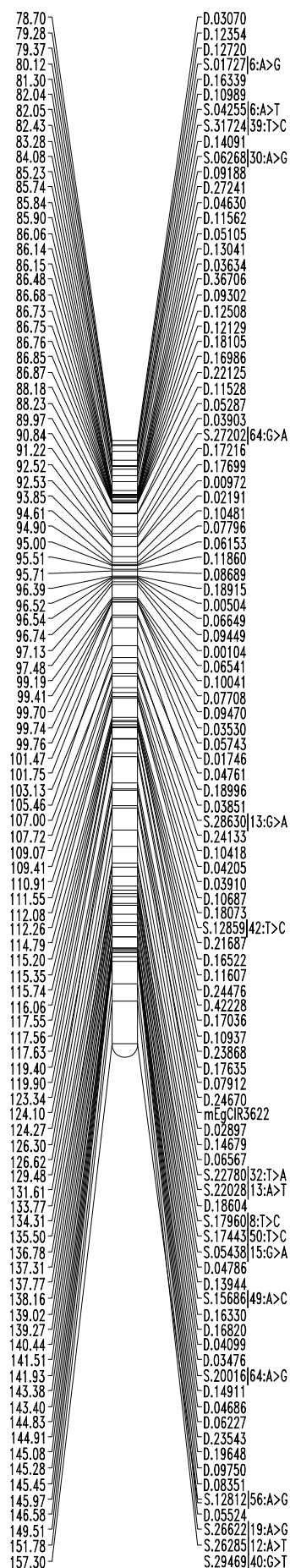
Siou Ting Gan, Wei Chee Wong, Choo Kien Wong, Aik Chin Soh, Andrzej Kilian, Eng-Ti Leslie Low, Festo Massawe and Sean Mayes

Corresponding author: Siou Ting Gan, Biotechnology Research Centre, Advanced Agriecological Research Sdn. Bhd., 43500 Semenyih, Selangor Darul Ehsan, Malaysia.  
Email address: [ganst@aarsb.com.my](mailto:ganst@aarsb.com.my)

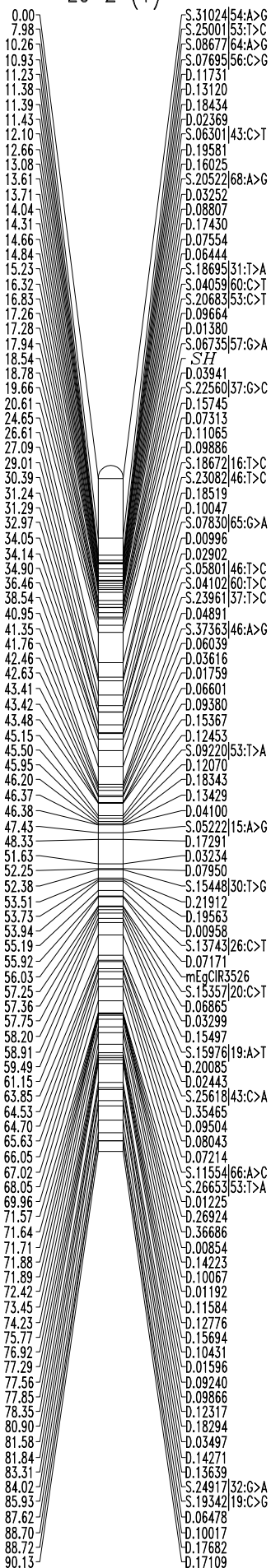
# LG 1 (1)



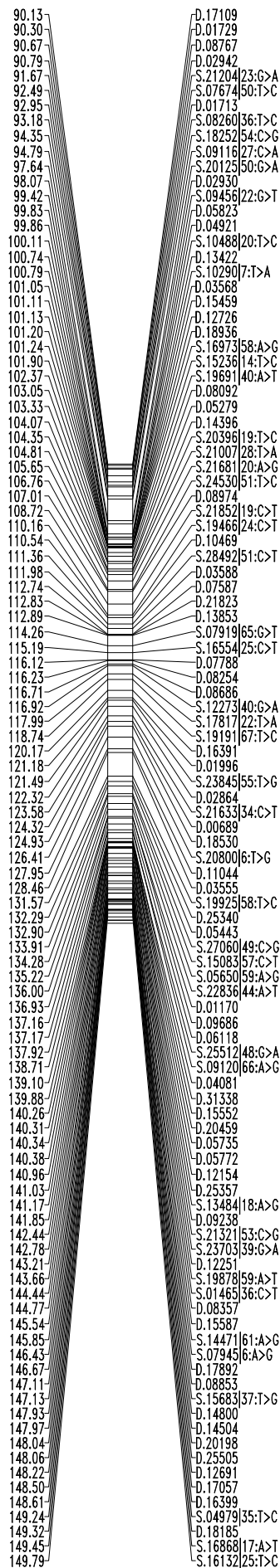
# LG 1 (2)



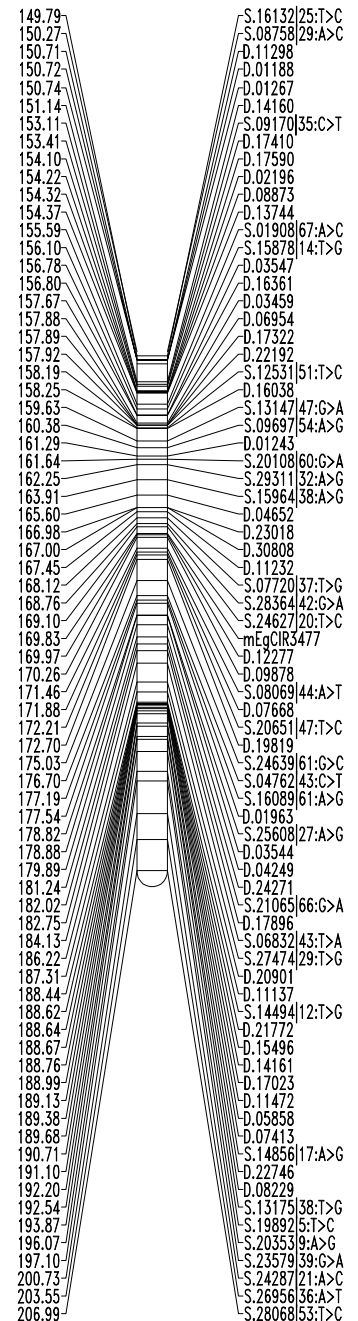
LG 2 (1)



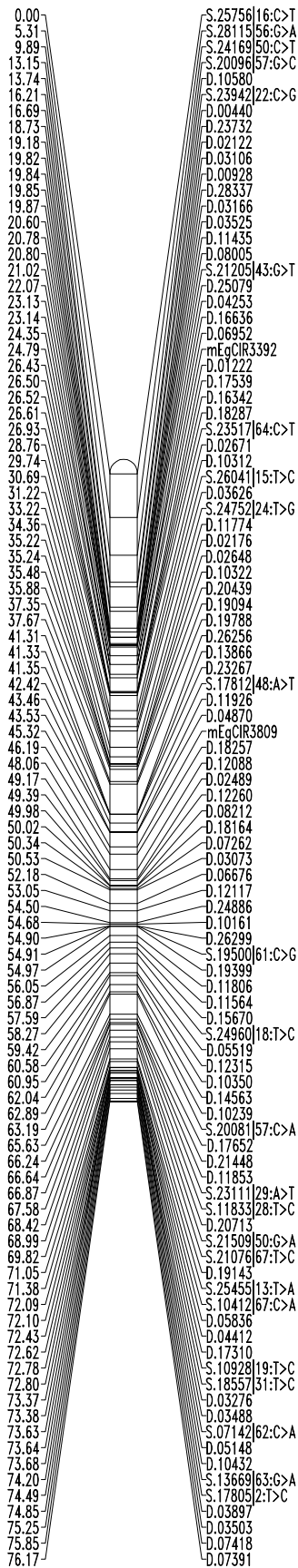
LG 2 (2)



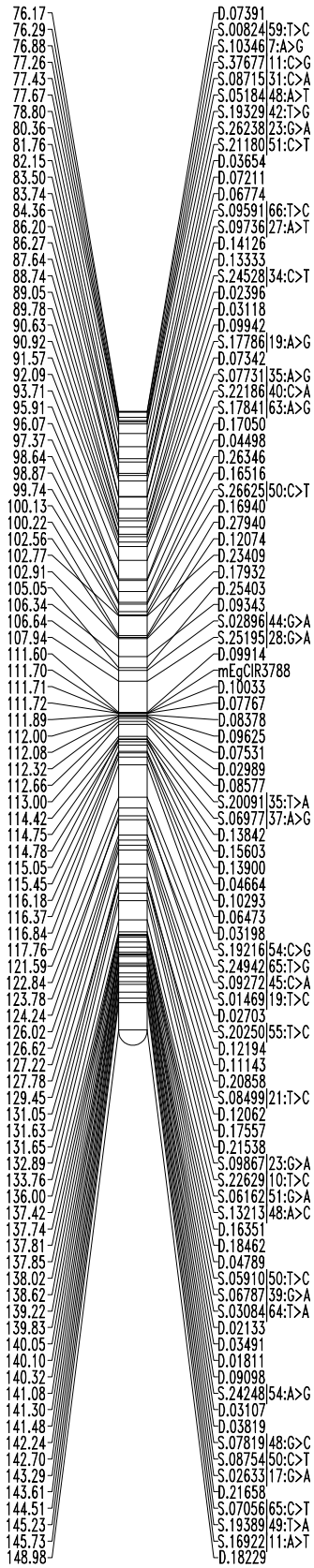
LG 2 (3)



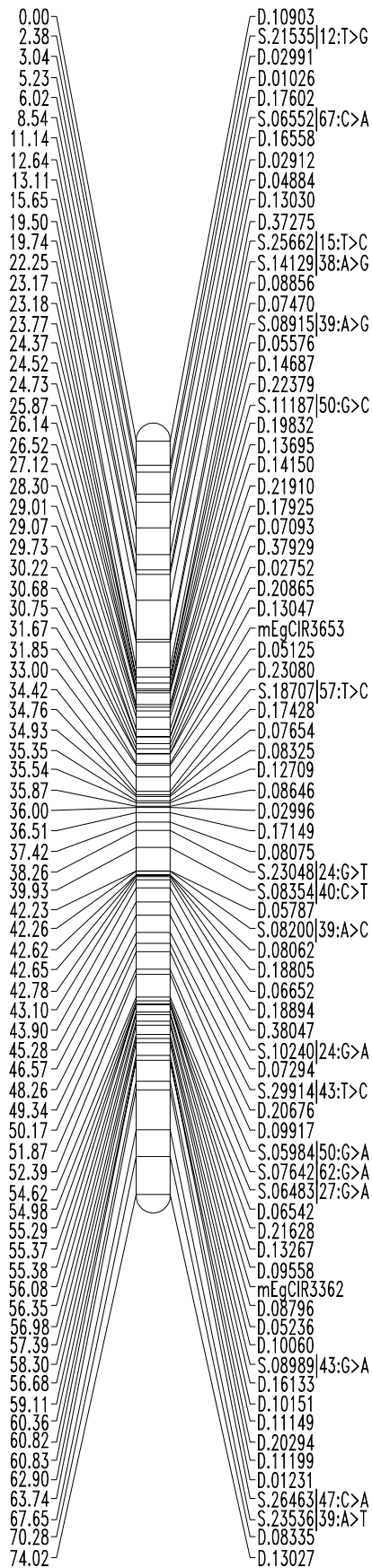
LG 3 (1)



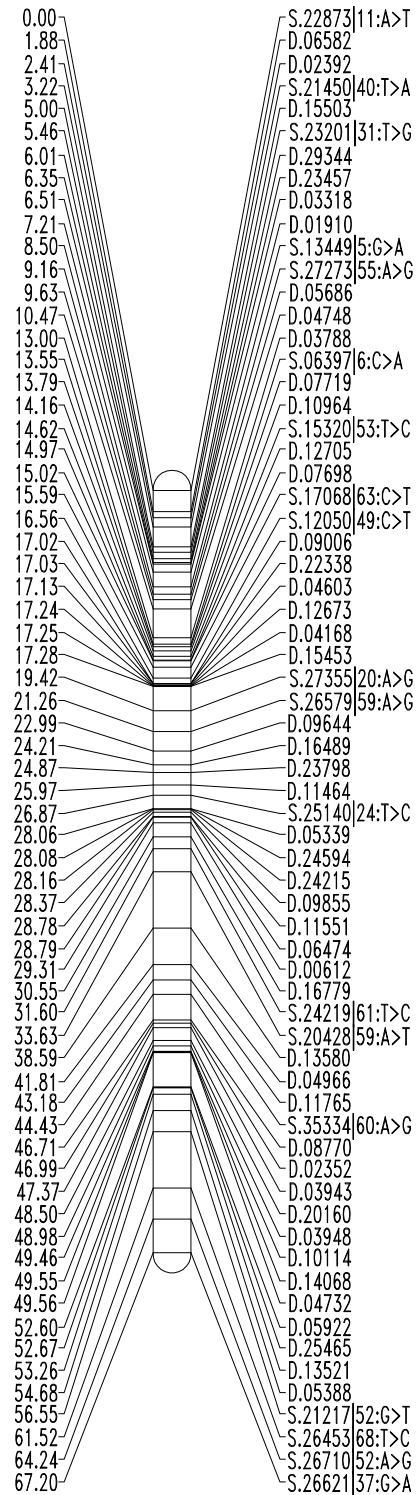
LG 3 (2)



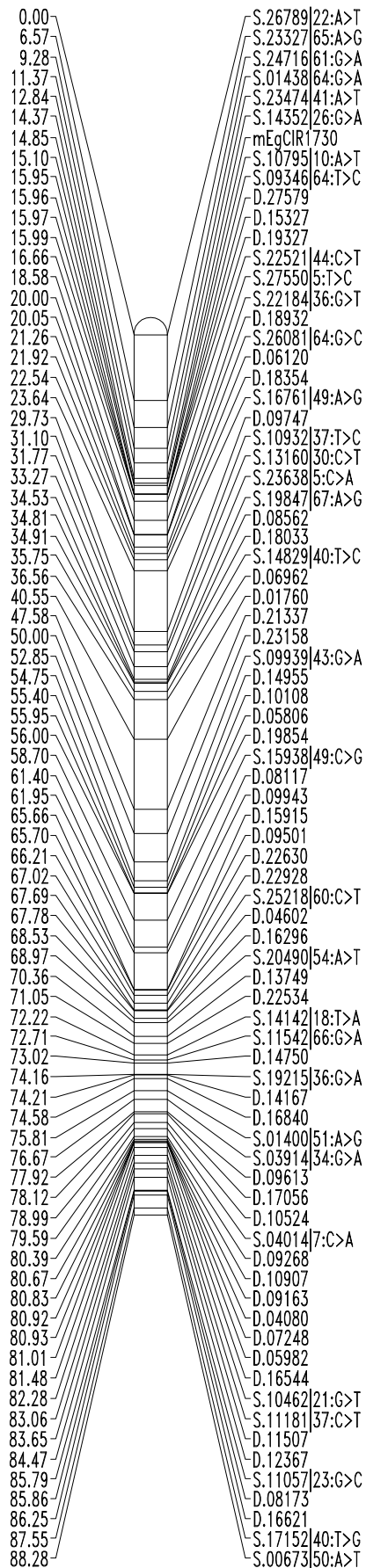
# LG 4A



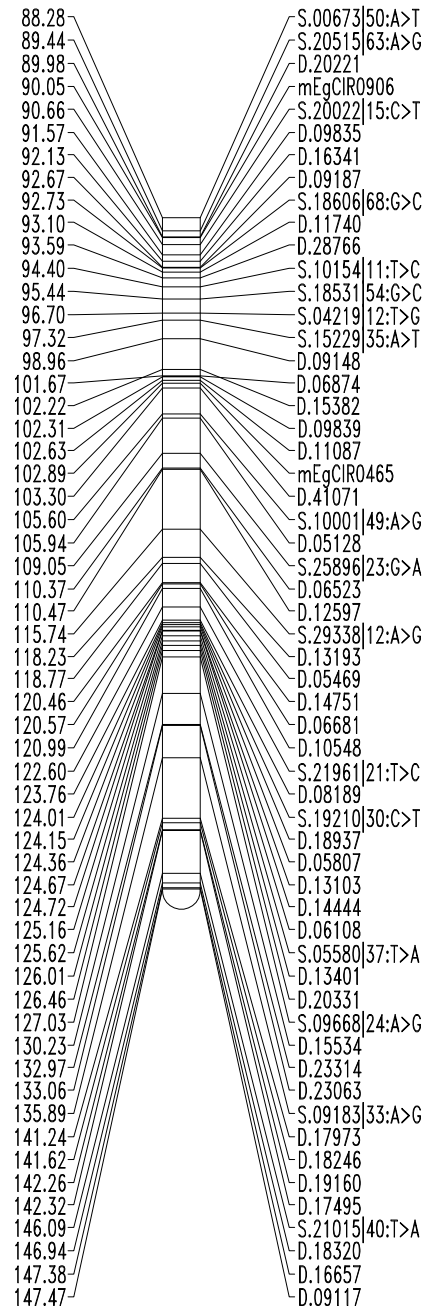
# LG 4B



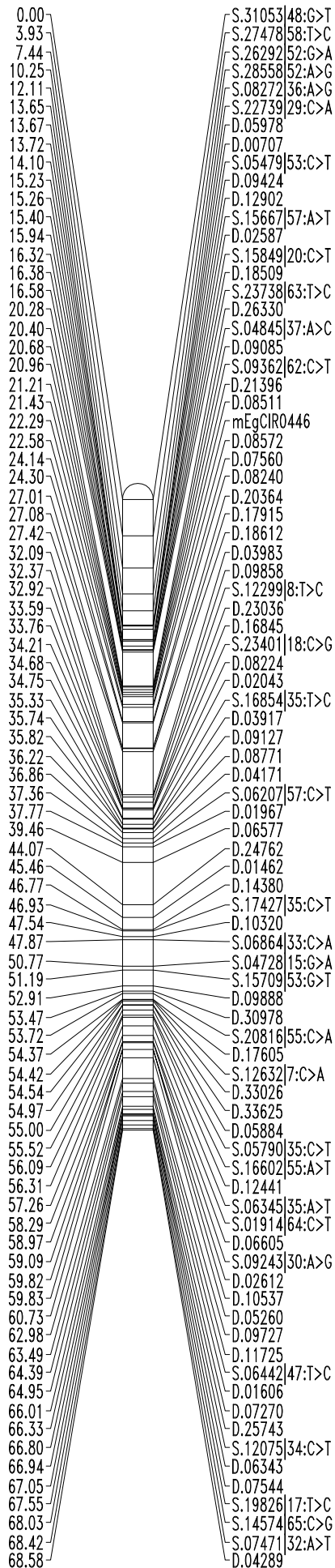
# LG 5 (1)



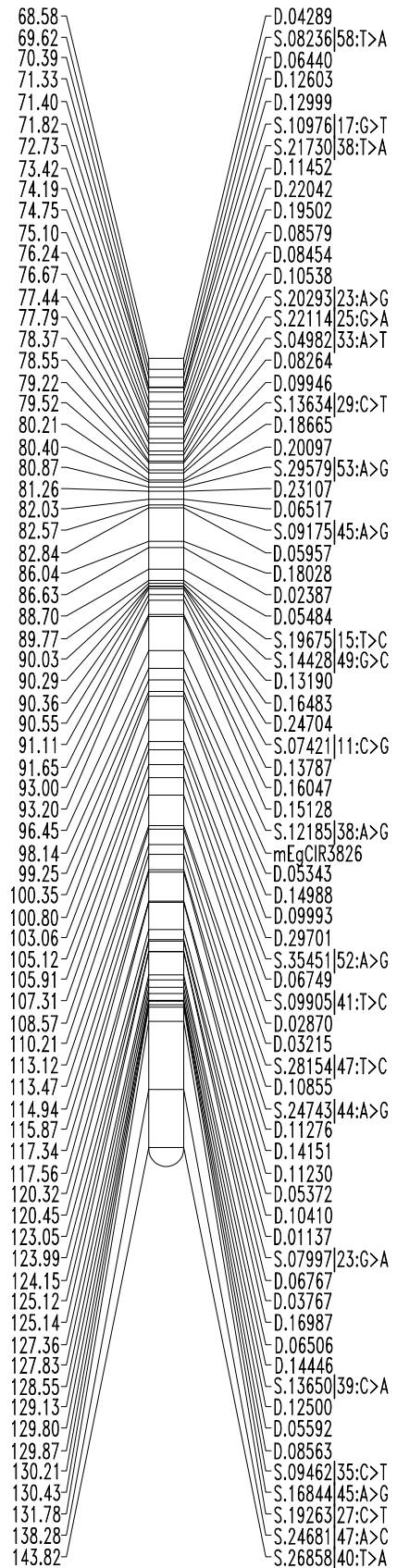
# LG 5 (2)

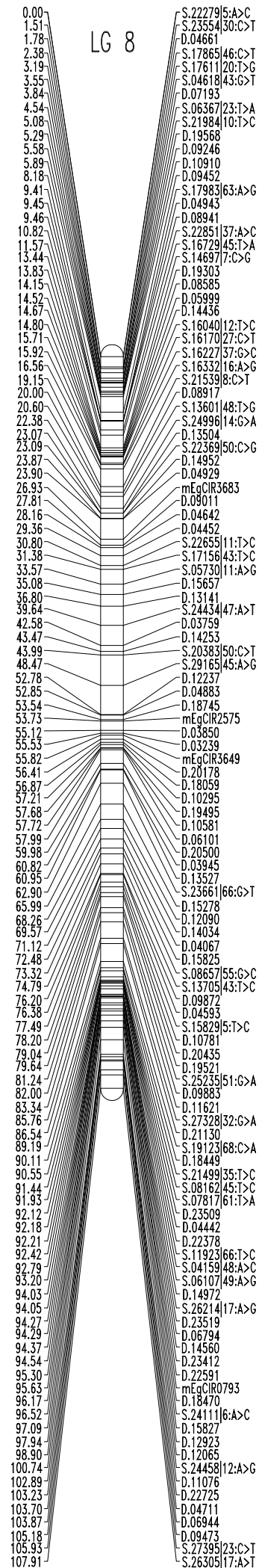
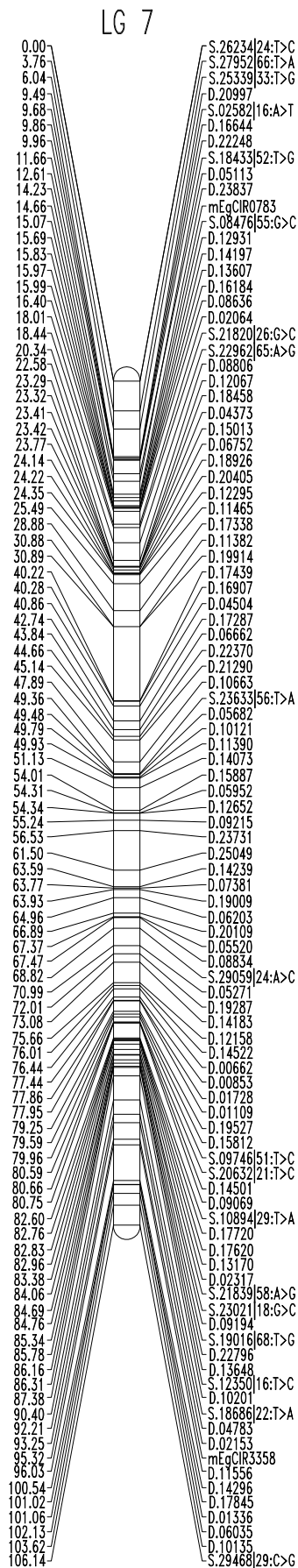


# LG 6 (1)



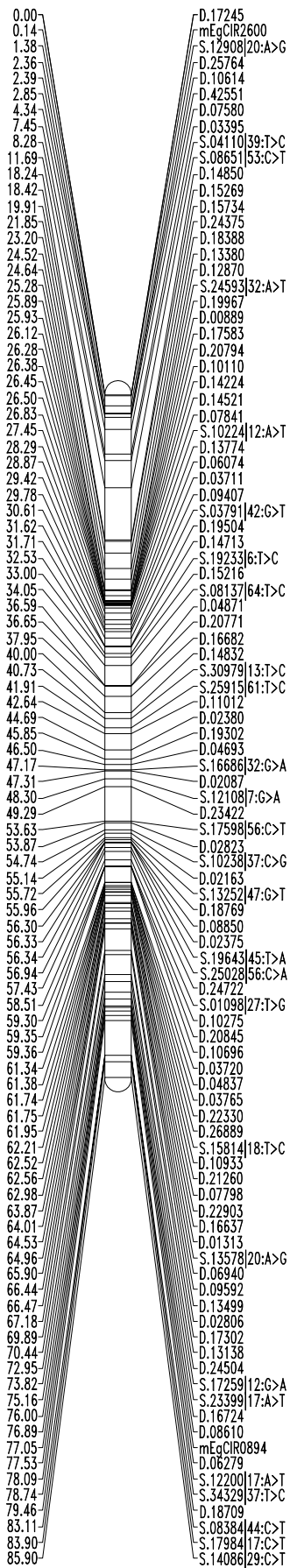
# LG 6 (2)



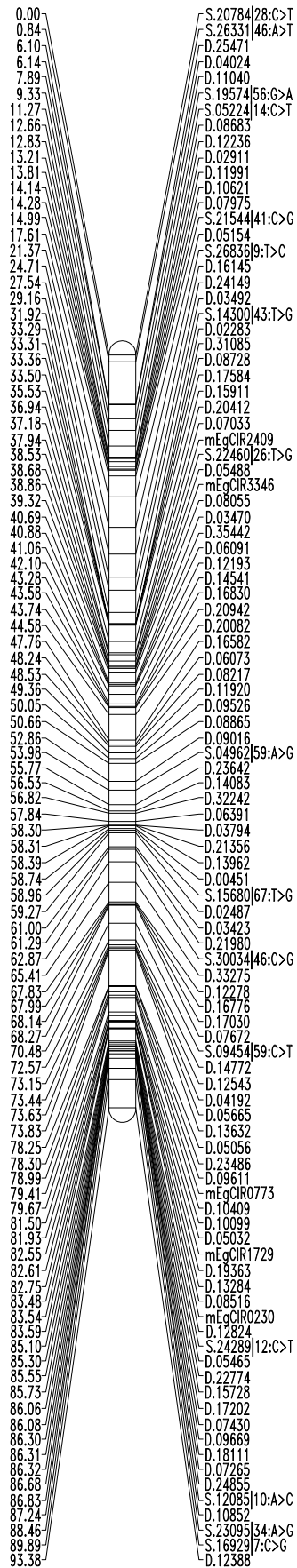




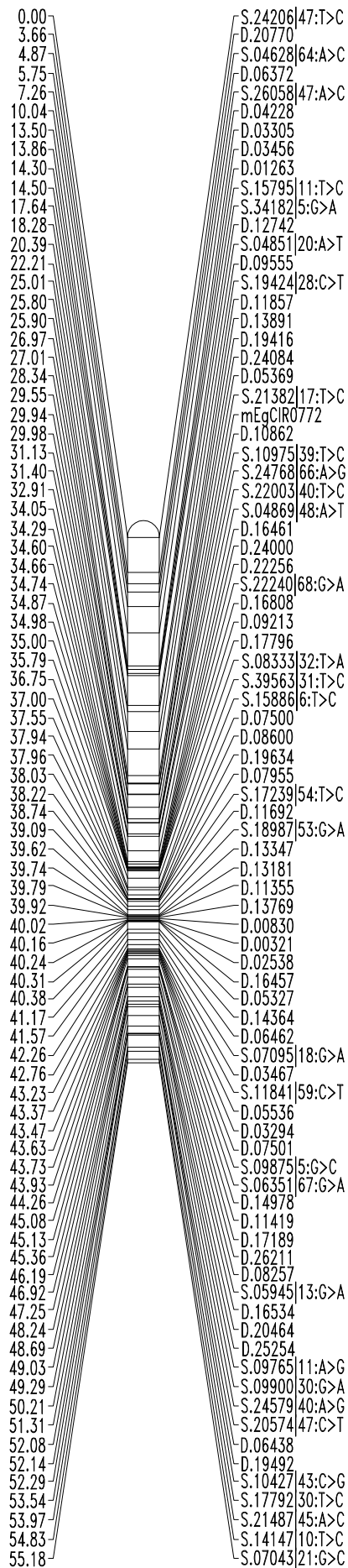
LG 9



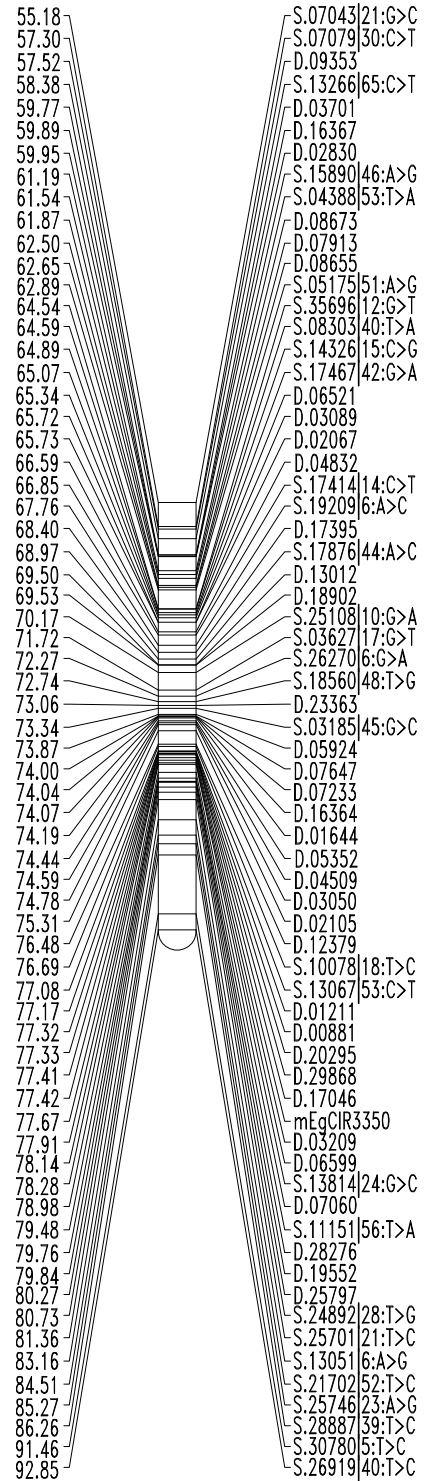
LG 10



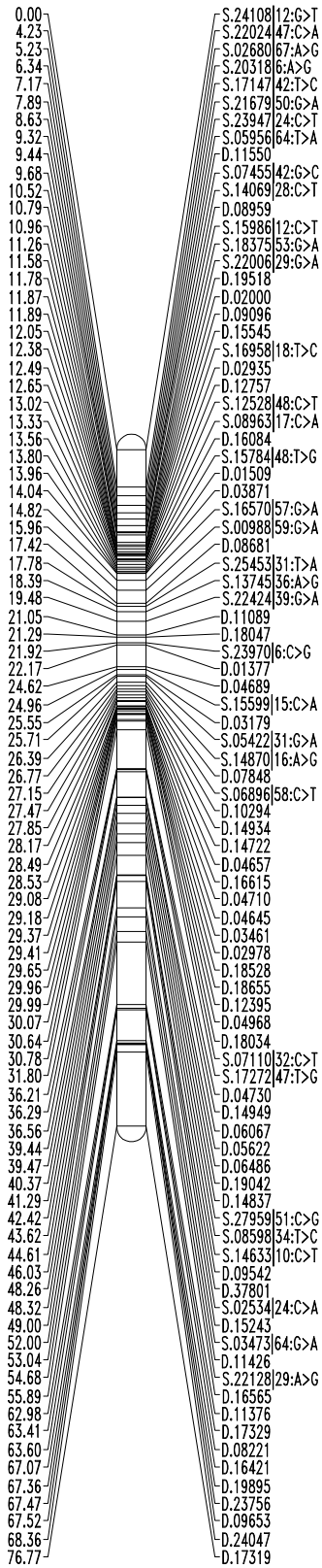
# LG 11 (1)



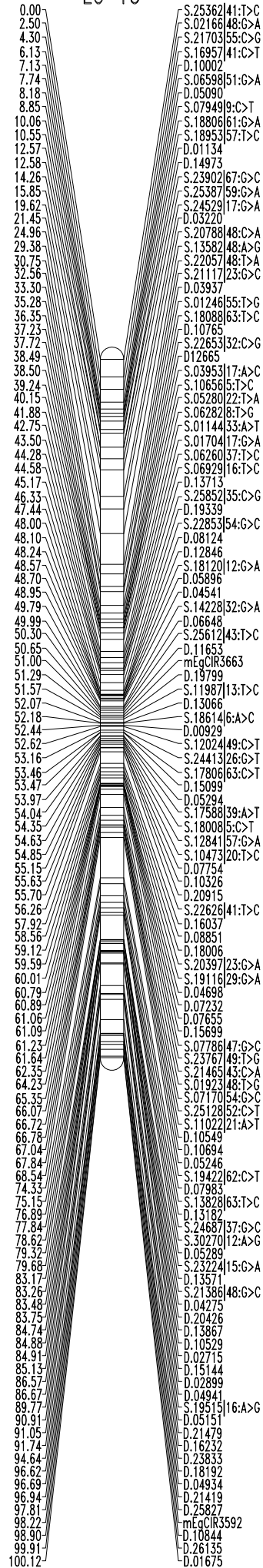
# LG 11 (2)



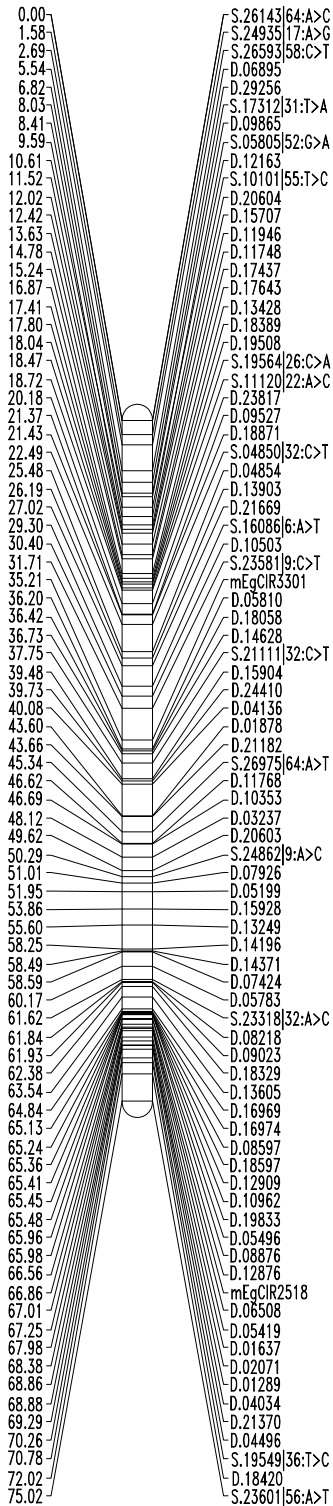
LG 12



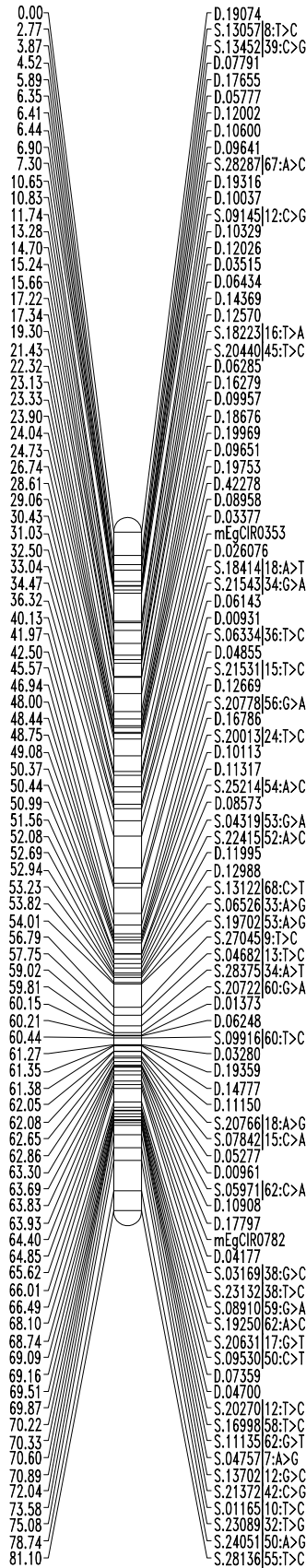
LG 13



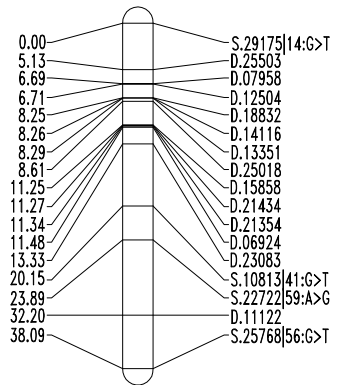
LG 14



LG 15



LG 16



**Fig. S3** Genetic linkage maps of the integrated map. The map consists of 2066 markers loci (35 SSR, 1340 DArT, 690 SNP and *Sh* locus). Marker names are shown to the right of each LG, with map distances in centiMorgans (Haldane units) to the left. D: DArT marker, S: SNP marker, mEgCIR: *E. guineensis* SSR marker.