

The Journal of Physiology

<https://jp.msubmit.net>

JP-TFP-2017-274167R1

Title: Sialic acids regulate microvessel permeability, revealed by novel *in vivo* studies of endothelial glycocalyx structure and function

Authors: Kai Betteridge

Kenton Arkill

Chris Neal

Steven Harper

Rebecca Foster

Simon Satchell

David Bates

Andrew Salmon

Author Conflict: No competing interests declared

Author Contribution: Kai Betteridge: Conception or design of the work; Acquisition or analysis or interpretation of data for the work; Drafting the work or revising it critically for important intellectual content; Final approval of the version to be published; Agreement to be accountable for all aspects of the work
Kenton Arkill: Conception or design of the work; Acquisition or analysis or interpretation of data for the work; Drafting the work or revising it critically for important intellectual content; Final approval of the version to be published; Agreement to be accountable for all aspects of the work
Chris Neal: Conception or design of the work; Acquisition or analysis or interpretation of data for the work; Drafting the work or revising it critically for important intellectual content; Final approval of the version to be published; Agreement to be accountable for all aspects of the work
Steven Harper: Acquisition or analysis or interpretation of data for the work; Drafting the work or revising it critically for important intellectual content; Final approval of the version to be published; Agreement to be accountable for all aspects of the work
Rebecca

Disclaimer: This is a confidential document.

Foster: Acquisition or analysis or interpretation of data for the work; Drafting the work or revising it critically for important intellectual content; Final approval of the version to be published; Agreement to be accountable for all aspects of the work
Simon Satchell: Acquisition or analysis or interpretation of data for the work; Drafting the work or revising it critically for important intellectual content; Final approval of the version to be published; Agreement to be accountable for all aspects of the work
David Bates: Conception or design of the work; Acquisition or analysis or interpretation of data for the work; Drafting the work or revising it critically for important intellectual content; Final approval of the version to be published; Agreement to be accountable for all aspects of the work
Andrew Salmon: Conception or design of the work; Acquisition or analysis or interpretation of data for the work; Drafting the work or revising it critically for important intellectual content; Final approval of the version to be published; Agreement to be accountable for all aspects of the work

Running Title: Endothelial glycocalyx sialic acids regulate microvessel permeability

Dual Publication: No

Funding: Medical Research Council (MRC): Andrew HJ Salmon, G0802829

TITLE

Sialic acids regulate microvessel permeability, revealed by novel *in vivo* studies of endothelial glycocalyx structure and function

AUTHORSHIP

- 1.Kai Betteridge
- 2.Kenton Arkill
- 3.Chris Neal
- 4.Steve Harper
- 5.Becky Foster
- 6.Simon Satchell
- 7.David Bates
- 8.Andy Salmon

RUNNING TITLE

Endothelial glycocalyx sialic acids regulate microvessel permeability

KEYWORDS

Endothelial glycocalyx
Permeability
Sialic acid
Correlative Light and Electron Microscopy

CORRESPONDING AUTHOR

Dr Andrew HJ Salmon
Renal Service
122 Shakespeare Road
North Shore Hospital
Waitemata District Health Board
Takapuna
Auckland
New Zealand
tel: 0064 9440 6930
fax: 0064 9442 3218
email: andy.salmon@bristol.ac.uk

AUTHOR AFFILIATIONS

1,3,4,5,6,8: Bristol Renal, Schools of Clinical Sciences and Physiology & Pharmacology, Dorothy Hodgkin Building, University of Bristol BS1 3NY
2,7: School of Medicine, Faculty of Medicine and Health Sciences, University of Nottingham Medical School, Nottingham NG7 2UH
2: Biofisika Institute (CSIC UPV/EHU) & Research Centre for Experimental Marine Biology and Biotechnology (PiE). University of the Basque Country, Spain
8: Renal Service, Specialist Medicine and Health of Older People, Waitemata DHB, Auckland, New Zealand

TABLE OF CONTENTS CATEGORY

Techniques for Physiology

KEY POINTS SUMMARY

- We have developed novel techniques for paired, direct, real-time *in vivo* quantification of endothelial glycocalyx structure and associated microvessel permeability
- Commonly used imaging and analysis techniques yield measurements of endothelial glycocalyx depth that vary by over an order of magnitude within the same vessel
- The anatomical distance between maximal glycocalyx label and maximal endothelial cell plasma membrane label provides the most sensitive and reliable measure of endothelial glycocalyx depth
- Sialic acid residues of the endothelial glycocalyx regulate glycocalyx structure and microvessel permeability to both water and albumin

ABSTRACT

The endothelial glycocalyx forms a continuous coat over the luminal surface of all vessels, and regulates multiple vascular functions. The contribution of individual components of the endothelial glycocalyx to one critical vascular function, microvascular permeability, remains unclear. We developed novel, real-time, paired methodologies to study the contribution of sialic acids within the endothelial glycocalyx to the structural and functional permeability properties of the same microvessel *in vivo*. Single perfused rat mesenteric microvessels were perfused with fluorescent endothelial cell membrane and glycocalyx labels, and imaged with confocal microscopy. A broad range of glycocalyx depth measurements (0.17–3.02 μ m) were obtained with different labels, imaging techniques and analysis methods. The distance between peak cell membrane and peak glycocalyx label provided the most reliable measure of endothelial glycocalyx anatomy, correlating with paired, numerically smaller values of endothelial glycocalyx depth (0.078 \pm 0.016 μ m) from electron micrographs of the same portion of the same vessel. Disruption of sialic acid residues within the endothelial glycocalyx using neuraminidase perfusion decreased endothelial glycocalyx depth and increased apparent solute permeability to albumin in the same vessels in a time-dependent manner, with changes in all three true vessel wall permeability coefficients (hydraulic conductivity, reflection coefficient, and diffusive solute permeability). These novel technologies expand the range of techniques that permit direct studies of the structure of the endothelial glycocalyx and dependent microvascular functions *in vivo*, and demonstrate that sialic acid residues within the endothelial glycocalyx are critical regulators of microvascular permeability to both water and albumin.

(242 words)

ABBREVIATIONS

Alexa488	Alexa Fluor 488™
ANOVA	analysis of variance
BSA	bovine serum albumin
FITC	fluorescein isothiocyanate
LED	light emitting diode
PMT	photomultiplier tube
$P_{s,BSA}$	Apparent solute permeability to bovine serum albumin
R18	Octadecyl Rhodamine B Chloride
SIP	sphingosine-1-phosphate
TRITC	Trimethylrhodamineisothiocyanate
TMA-DPH	1-(4-Trimethylammonio-phenyl)-6-phenyl-1, 3, 5-hexatriene p-toluenesulfonate
WGA	wheat germ agglutinin

INTRODUCTION

The entire luminal surface of all vascular walls is covered with a continuous, carbohydrate-rich mesh: the endothelial glycocalyx (Weinbaum *et al.*, 2007). The membrane-bound portion of the endothelial glycocalyx is supplemented with components of plasma to form a thickened endothelial surface layer. This endothelial coat governs the nature of interactions between fluid, protein and cellular constituents of flowing blood and the endothelial cell, and is therefore a critical regulator of vascular function (Curry & Adamson, 2013). The endothelial glycocalyx regulates permeability in exchange microvessels; leukocyte rolling, adhesion and migration in post-capillary venules; mechanotransduction, flow- and shear-induced vasodilation in arterioles, and protects the vessel wall from the development of atherosclerosis in conduit arteries.

The role of the endothelial glycocalyx in regulating microvessel permeability was formalised in the fibre-matrix junction-break theory proposed by Curry and Michel in 1980 (Curry & Michel, 1980). This theory and subsequent refinements hold that the endothelial glycocalyx is the primary macromolecular sieve in continuous microvessels, and that this sieving immediately above interendothelial junctions creates a protected "sub-glycocalyx space", whose oncotic pressure determines the magnitude of the oncotic pressure gradient resisting water and solute flux across vessel walls (Levick & Michel, 2010). Demonstrations of the resulting non-linear form of the Starling equation under steady-state filtration conditions (Michel & Phillips, 1979), and unequal actions of luminal and abluminal oncotic pressures (Hu *et al.*, 2000), support this theory. These functional demonstrations are supported by recent observations that a repeating periodic arrangement of the fibres of the endothelial glycocalyx are sufficient to explain the near-uniform macromolecular permeability coefficients seen throughout the vasculature (Squire *et al.*, 2001; Arkill *et al.*, 2011). The endothelial glycocalyx also regulates hydraulic resistance, with greater glycocalyx depths providing greater resistance (Adamson, 1990; Salmon *et al.*, 2009).

The structure of the endothelial glycocalyx is complex, with depth, spatial localisation and 3D architecture all structural facets that impact on vascular function including permeability. In addition, determining the relative functional importance of different glycocalyx components has been challenging. The endothelial glycocalyx contains an array of glycoproteins, proteoglycans and glycosaminoglycans (GAGs), with much focus on the importance of GAGs in regulating key physiological properties to the vessel wall (Tarbell & Ebong, 2008). Many of the glycoproteins are capped by sialic acid (Varki, 2008) contributing to the structure of the glycocalyx. The dominant GAG is heparan sulphate, which is a family of charged molecules with a wide variety of subtypes depending on the nature of bonds between individual saccharide units and their sulphation pattern (Weinbaum *et al.*, 2007)). Heparan sulphate has been shown to regulate mechanotransduction (Florian, 2003; Kumagai *et al.*, 2009), and evidence indicates an important role in regulating permeability in endothelial monolayers *in vitro* (Singh *et al.*, 2007) and in isolated coronary arterioles *ex vivo* (Huxley & Williams, 2000). Chondroitin sulphate also carries significant charge, and again appears to have an important role in regulating permeability (Jeansson & Haraldsson, 2003). Finally hyaluronan, a non-sulphated GAG with extended chain length, also plays important roles in mechanotransduction and glomerular filtration (Jeansson *et al.*, 2006; Pahakis *et al.*, 2007; Jeansson *et al.*, 2009).

At present, little is known about the potential role that sialic acid residues within the endothelial glycocalyx may also make to microvessel permeability characteristics. Sialic acid residues regulate leukocyte (Sakarya *et al.*, 2004) and platelet (Gorog *et al.*, 1982) adhesion, mechanotransduction (Tarbell & Ebong, 2008; Kumagai *et al.*, 2009), LDL uptake into endothelial cells (Gorog *et al.*, 1982) and development of atherosclerosis (Cuniberti *et al.*, 2005). Endothelial glycocalyx sialic acid residues are disrupted in disease states predisposing to atherosclerosis such as diabetes (Nassimizadeh *et al.*, 2010), as well as playing an important role in kidney disease (Dekan *et al.*, 1991; Gelberg *et al.*, 1996), and sepsis (Adembri *et al.*, 2011), all of which have been linked to endothelial glycocalyx dysfunction (Salmon & Satchell, 2012). Despite this, the role

of sialic acids in regulating microvessel permeability remains unclear. Early studies showed no change in microvessel permeability following sialic acid disruption by neuraminidase (Mason *et al.*, 1977). *In vitro* studies indicate a role for sialic acid residues in endothelial cell monolayer barrier function (Singh *et al.*, 2007; Cioffi *et al.*, 2012), but the endothelial glycocalyx and permeability coefficients of cultured endothelial cells are substantially different from the *in vivo* situation (Curry, 2005; Chappell *et al.*, 2009). Despite their abundance and importance in key physiological processes and disease states, the importance of endothelial glycocalyx sialic acid residues in regulating intact vessel wall permeability coefficients remains unclear.

Current *in vivo* studies of the endothelial glycocalyx either involve disruptive (e.g. electron microscopy) or indirect (e.g. tracer exclusion) techniques to examine the endothelial glycocalyx, both of which give conflicting results (Salmon *et al.*, 2009; Gao & Lipowsky, 2010). Newer and more direct optical imaging techniques which have employed the use of fluorescently tagged antibodies and lectins to bind glycocalyx have also been attempted in recent years (Cai *et al.*, 2012; Salmon *et al.*, 2012; Yen *et al.*, 2012). These techniques have often used confocal laser scanning and two-photon microscopes in an attempt to better resolve the glycocalyx in microvessels. However, even with the improved resolution of laser scanning methods, these optical techniques are still assessing changes in glycocalyx structure that fall within or below the diffraction limit of optical imaging, particularly in the physiological environment (Gretz & Duling, 1995). To make estimates of relative changes in depth within this resolution limit, each of these direct optical imaging techniques have applied different analysis methods which often yield varying and conflicting results (Gao & Lipowsky, 2010; Cai *et al.*, 2012; Salmon *et al.*, 2012; Yen *et al.*, 2012). In addition, these studies of endothelial glycocalyx are rarely coupled with measurements of the functional properties of the wall of the same vessel.

The aim of this study was to understand the contribution of endothelial glycocalyx sialic acid residues to microvascular structure and permeability function, and to do so we have developed methods for real-time, direct, paired measurements of endothelial glycocalyx structure and function *in vivo*, as well as applying electron microscopy preservation to compare *in vivo* and *ex vivo* measurements of the same vessels with known functional properties.

METHODS

Ethical approval

Procedures were carried out in accordance with national regulations set out by the UK Home Office legislation, and with local approval from the University of Bristol local ethical committee. Male Sprague-Dawley rats (150-250g; Harlan) were used in all experiments. Anaesthesia was induced with an intraperitoneal injection of sodium pentobarbital (60 mg/kg), and maintained with subcutaneous intramuscular injections approximately every 45 minutes. At the end of all experiment animals, were euthanased with excess anaesthetic and cervical dislocation. Glycocalyx measurements were made on 16 rats, solute permeability measurements on 9 rats, and hydraulic conductivity and reflection coefficient measurements on 7 rats.

Real-time endothelial glycocalyx imaging

Under anaesthesia, the mesentery was exposed via a midline laparotomy, constantly superfused with mammalian Ringer solution at 37 °C, teased over a glass coverslip, and imaged via the objective of an inverted microscope. Capillaries and post-capillary venules from 10-40 µm in diameter and without rolling or adherent leukocytes were identified, and cannulated in the direction of flow with a refillable bevelled glass micropipette (Bates, *J Anat*, 2002) for endothelial glycocalyx imaging alone in initial experiments. Microvessels were then perfused continuously with mammalian Ringer solution containing BSA (4%; A4378, Sigma), followed by supplementation with an endothelial cell membrane label (Octadecyl rhodamine B chloride (R18) (2 µM in BSA-Ringer-0.01%DMSO; O246, Life Technologies), or TMA-DPH (2 µM in BSA-Ringer-0.01%DMSO; T204, Molecular Probes) (Peti-Peterdi *et al.*, 2009) and then labelling of sialic acid residues within the endothelial glycocalyx (FITC-conjugated WGA (2 mole/mole dye content; 2.77 µM in BSA-Ringer; L4895, Sigma) or TRITC-conjugated WGA (0.65 mole/mole dye content; 11.08 µM in BSA-Ringer; L5266, Sigma), with concentrations determined in preliminary optimisation experiments, each for 5 minutes, followed by washout with unsupplemented 4% BSA-Ringer solution.

Respiratory and peristaltic movement required both fluorophores (R18 and FITC-WGA) to be excited and detected simultaneously in all experiments. The consequent theoretical possibility of signal detection in the 605±75nm (R18) channel from the broad emission spectrum of WGA-conjugated FITC was assessed qualitatively and quantitatively. Fluorescein (FITC-WGA) artefacts observed in the centre of vessels were detected in both the 515±30nm (FITC) and 605±75nm (R18) channels. Due to simultaneous dual colour fluorescence collection overlap of the R18 emission with the 488 laser can be significant therefore other fluorophores used in combine glycocalyx-permeability studies (FITC-WGA and alexa-488 BSA) also required assessment of alternative glycocalyx and endothelial cell membrane labels. Endothelial glycocalyx depth was therefore also measured using TRITC-WGA (to label sialic acid residues in the endothelial glycocalyx), and TMA-DPH (to label endothelial cell membrane), with neither fluorophore emission spectra detectable by an alternative channel. This combination of TMA-DPH (endothelial cell membrane) and TRITC-WGA (sialic acid residues in the endothelial glycocalyx) also eliminated the possibility of fluorescent emission from anatomical labels from confounding the functional solute flux data obtained using Alexa 488 BSA in later experiments.

Labelled mesenteric microvessels were imaged via the objective (CFI Plan Apochromatic VC 60X Oil with 1.4 NA) of an inverted microscope (Nikon eclipse TiE), and scanned in the x and y directions using 488 nm and 543.3 nm wavelength lasers (100% laser power). The laser power, gain and offset for both channels was kept constant for all experiments (515±30 nm channel = 90 gain & 0 offset; 605±75 nm = 100 gain & 0 offset). Fluorescent light emitted back into the objective was detected using 515±30 nm and 605±75 nm photomultiplier tubes (PMT), and differential interference contrast (DIC) images were detected simultaneously in a diascopic manner using a PMT for transmitted light. Z-stack images (2048 by 2048 pixels; 20-slices), were captured through the entire vessel using an even inter-slice distance in proportion to the height of the vessel being imaged (e.g. a 20 µm diameter vessel will have 20 optical slices each 1 µm apart) (Figure 1A).

Endothelial glycocalyx image analysis

All z stacks were analysed using FIJI (Image J) software (Schindelin *et al.*, 2012). Three channels (DIC, endothelial glycocalyx label (FITC or TRITC), & cell membrane label (R18 or TMA-DPH channels)) and 20 slices in the z plane were processed to account for variability in the image acquisition step, predominantly arising from respiratory and peristaltic movement between optical slices of the z-stacks causing misalignment of frames within a z-stack. Virtual stack slices were therefore registered based on the images acquired in the DIC channel, and realigned identically for all channels to generate a three dimensional image of the entire vessel. Once registered, the z-stack image demonstrating the maximal vessel diameter (i.e. the mid-point of the vessel, and the position in which endothelial glycocalyx and cell membrane labels will be perpendicular to the plane of section, minimising anatomical overlap) was identified (Figure 1A, red arrow).

Fluorescence intensity profiles were then generated for both endothelial cell label and sialic acid component of the endothelial glycocalyx label, along 30 evenly-spaced lines across the full width of the vessel. Each point along the profile represented the average fluorescence intensity from 16 adjacent pixels (8 pixels either side of the line drawn) (Figure 1B). Four automated measurements of endothelial glycocalyx parameters were then calculated (Figure 1C): i) the anatomical distance between peak signal intensity of the endothelial cell membrane label and sialic acid component of the endothelial glycocalyx label (“peak to peak”); ii) the full width measured at the point of half maximal fluorescence intensity of the sialic acid component of the endothelial glycocalyx label (“FWHM”); iii) and the peak fluorescence intensity of the sialic acid component of the endothelial glycocalyx label (I_f). Mean values for each of these three assessments of the endothelial glycocalyx were then determined using data from all of the 30 intensity lines analysed; any values for peak to peak which yielded depth values of ≤ 0 were excluded from the calculation of the mean glycocalyx depth, and were used to determine (iv) a fractional coverage of positively (and negatively) resolvable glycocalyx. All registration, maximal width identification, fluorescence intensity profiling and measurement steps were conducted by automated macros.

To model whether the peak to peak method was dependent on the size of the individual picture elements acquired in the image we used computational modelling to varying the anatomical position of the “true” theoretical peak glycocalyx within a single voxel by passing an Airy disk representation of 488nm laser light passing through a 1.4NA objective (Figure 1D) at 1nm intervals. The anatomical position of the maximum intensity reading would vary as much as one voxel integer (104 nm for the 60x objective). This problem was addressed mathematically by comparing the recorded peak intensity with those calculated to be close to the true intensity via linear interpolation (triangulation) and Gaussian fitting of the 3 peak pixels recorded (Figure 1E). Results showed that recorded peak intensities and triangulated peak intensities varied depending on the true position, but Gaussian intensities provided the least variable (mid-range) results, with the position of peak fluorescence intensity identified independent of the starting point of the scan, therefore providing the greatest anatomical resolution of these 3 methods. (Figure 1E). As a consequence, all further measurements were calculated using the peak value of a Gaussian fit of recorded peak intensities.

Paired imaging of solute flux and endothelial glycocalyx

Having developed imaging methods for studying the endothelial glycocalyx in real time *in vivo*, alternative cannulation and perfusion systems were necessary and hence developed for combined solute permeability and endothelial glycocalyx imaging (figure 2A). Micropipettes were constructed in house from split-barrel borosilicate glass capillaries (O.D. 2 mm, wall thickness 0.3 mm, central septum thickness 0.22 mm), pulled to a fine tip (Narishige P22), bevelled (25° angle, 10-15 µm tip diameter), and angled mid-shaft (~45° angle). Each pipette barrel then received a refilling line (stretched polyethylene tubing, O.D. 0.61 mm) and a blunt-tipped needle (26G), before the non-cannulating rear aperture was sealed with epoxy resin. The refill line was connected to a syringe pump-driven replaceable refill reservoir for exchanging solutions within each pipette barrel; the 26G needles were attached to individual, modifiable water manometers to control hydrostatic

pressures in each side of the pipette independently (Figure 2A).

Using the same surgical preparation described above for glycocalyx-only imaging, mesenteric microvessels were cannulated using this double-barrelled pipette system. Barrel A contained BSA-Ringer solution (final concentration 4% w/v BSA). Barrel B contained BSA-Ringer solution supplemented with Alexa Fluor 488 conjugated BSA (Alexa 488 BSA; 0.03 mg/ml unless otherwise stated) to a final concentration of 4% w/v total BSA. Following cannulation, the pressures exerted individually to both pipette barrels were adjusted manually using the relevant water manometers until balance pressure was reached (perfusion ceased; typical range 15-25 cmH₂O). The pressure in barrel A (BSA-Ringer) was then marginally raised (1-5 cmH₂O) above the pressure in barrel B (Alexa 488 BSA) until the vessel was perfused with BSA-Ringer only, without backflow into barrel B. The vessel was continuously perfused under these stable conditions for 10min before image acquisition.

The entire imaging window was excited at 480 nm using a widefield fluorescent LED (Precise Excite Cool LED; 50% power). Emitted fluorescence was filtered through a 535 nm filter block and focused onto the sensor of a high sensitivity camera (Photometrics CoolSnap HQ₂; fixed settings: 14-bit monochrome detection; 20 MHz readout mode; 2x2 binning; 696 x 520 pixels; 350 visual gain). Under these conditions, initial videos were captured (Nikon NIS Elements software; 60 ms intervals; 20 s duration). Pressures in barrels A and B were then instantly swapped, halting perfusion of BSA-Ringer and commencing perfusion with Alexa 488 BSA (figure 2B, C). After 20s perfusion with fluorescent solution, pressures were switched back to initial settings, generating perfusion with non-fluorescent BSA-Ringer for a final period of 20s (figure 2C). This perfusion and imaging sequence for capturing solute permeability (P_{sBSA}) quantification data was repeated 4-5 times for each period of the experiment. During these experimental periods, perfusate either contained vehicle, or neuraminidase to disrupt sialic acids (Neuraminidase from *Clostridium perfringens* (Salmon *et al.*, 2012); 2 U/ml in 4% BSA; N2876, Sigma).

Following this imaging of solute flux, pipette barrels A and B were refilled and the vessel perfused with labels for endothelial cell membrane and glycocalyx: note that the use of Alexa-488-labelled BSA precluded the use of overlapping emission fluorophores (e.g. FITC) for cell membrane or glycocalyx labelling in these permeability experiments. After P_{sBSA} measurements, vessels were therefore labelled with TMA-DPH to label endothelial cell membranes; and TRITC-WGA to label endothelial glycocalyx sialic acid residues; Figure 2D). Each dye was perfused for 5 minutes, before lumen refill and perfusion with BSA-Ringer alone. Endothelial glycocalyx was then imaged as described above (Figure 2E).

Solute permeability analysis

Real time video images of Alexa 488 BSA perfused microvessels were analysed using Nikon NIS Elements software. A standard Region of Interest (ROI) was created, covering the full length of the perfused vessel in the imaging field and extending 20um directly adjacent to either side of the vessel, with the distance between pipette tip and the ROI position maintained at ~150 μ m. ROI measurements of mean fluorescence intensity (I_f) vs time (s) were recorded from each experiment and plotted as a scatter plot giving a characteristic time course appearance (e.g. Figure 2C). Anatomical dimensions of the microvessel radii (r) were measured directly from images of endothelial cell membrane labelling in the same microvessel.

A typical time course plot (e.g. Figure 2C) demonstrated a steady baseline value of background fluorescence intensity (I_f) during perfusion of just BSA-ringer alone. Initial filling of the vessel lumen with Alexa 488 BSA caused a sharp, stepwise increase in fluorescence intensity (I_f ; $[\Delta I_f]_0$). Initial BSA transport across the vessel wall caused a steady rate increase in I_f over time ($[dI_f/dt]_0$) (Figure 2C; white line), followed by a sudden drop in I_f when the perfusate was switched back to BSA-Ringer.

The permeability coefficient of the solute BSA (P_{sBSA}) was the rate of flux of BSA (J_{sBSA}) through

an area of a microvessel (A) per unit concentration difference (Δc). This can be expressed as:

$$\text{Equation 1.1} \quad P_{sBSA} = \left(\frac{J_{sBSA}}{A} \right) \cdot \frac{1}{\Delta c}$$

With this methodology (Huxley *et al.*, 1987), J_{sBSA} could be calculated from the initial stepwise change (ΔI_f) and subsequent rate of change fluorescence intensity (dI_f) over time (t) immediately (time zero: “0”) after the capillary lumen was filled with Alexa 488 BSA in a capillary of measured radius (r):

$$\text{Equation 1.2} \quad P_{sBSA} = \frac{1}{\Delta I_{f0}} \cdot \left(\frac{dI_f}{dt} \right)_0 \cdot \frac{r}{2}$$

Endothelial glycocalyx imaging by electron microscopy

Following real time structural measurements of glycocalyx and vessel permeability *in vivo*, vessels were then perfused with albumin-free Alcian Blue-Ringer solution (Alcian blue 8GX, A5268, Sigma) as previously described (Salmon *et al.*, 2009) for 5 minutes (Figure 2F). Superfusate was then switched from warm Ringer to ice cold glutaraldehyde (2.5%) for 5 minutes to achieve mesentery stiffening indicating successful fixation. Micropipettes were then removed, the mesenteric panel containing the preserved vessel dissected away from the surrounding gut, rinsed and then stored in glutaraldehyde at 4°C. Specimens were post fixed using 1% osmium tetroxide, 1% lanthanum chloride and saturated uranyl acetate on ice, and then processed and embedded into resin. The cannulation site in the microvessel studied *in vivo* was identified, and the block was trimmed until 100nm sections containing the previously studied portion of mesenteric microvessel were cut, mounted on piliform covered slot grids, and imaged with 120keV transmission electron microscopy (Tecnai T12 with an Eagle camera (FEI)) (Figure 2Fiii).

Electron micrographs were analysed using Adobe Photoshop software. Images from 8 points evenly spaced around the lumen were assessed to quantify glycocalyx depth in each of these regions. The depth was assessed at 20 points for each high power image by measuring the anatomical distance from the luminal phospholipid bilayer to the furthest point of glycocalyx; perpendicular measurements were assured by only using images where the phospholipid bilayer was visible as two distinct layers. This was performed by initially overlaying a grid, and depth was measured at any point where the visible phospholipid bilayer crossed vertical or horizontal lines (depending on the orientation of the image). Sample groups were blinded before analysis, and measurements performed at points where endothelial cell membranes touched the overlaid gridlines to eliminate potential subjective interpretations.

Hydraulic conductivity and reflection coefficient measurement

In separate experiments, we used the Landis–Michel micro-occlusion technique as previously described to measure permeability coefficients hydraulic conductivity (L_p) and the reflection coefficient to albumin (σ_{BSA}), in intact microvessels *in vivo* (Salmon *et al.*, 2009).

In the steady state the following holds (Michel and Phillips 1987):

$$\text{Equation 2.1} \quad \frac{J_v}{A} = L_p (\Delta P - \sigma^2 \Pi_c)$$

Individual mesenteric microvessels were exposed, cannulated with a single-lumen bevelled micropipette, and perfused with 4% BSA-Ringer supplemented with low-density rat erythrocytes (as flow markers and source of S1P) at 60, 80 or 100cmH₂O. Vessels were intermittently and briefly occluded with a fine glass rod. Fluid filtration rate per unit area (J_v/A) was calculated from the rate of erythrocyte movement towards the occluder and the cross-sectional area of the vessel. L_p ($\times 10^{-7}$ cm.s⁻¹.cmH₂O⁻¹) was calculated from the slope of the relationship between filtration rate

and applied pressure, and the measured effective oncotic pressure difference ($\sigma\Delta\pi$) from the abscissal intercept. The ideal oncotic pressure of this perfusate (π_c) was calculated empirically (Bates, 1998). Reflection coefficient was subsequently calculated from the relation

$$\text{Equation 2.2} \quad \sigma = \sqrt{(\sigma\Delta\pi/\pi_c)} \quad (\text{Michel \& Phillips, 1987}).$$

Measurements were repeated before and after perfusion with neuraminidase for 20-25min, matching apparent solute permeability experiments described above.

Determination of true diffusive solute permeability

Convective and diffusive fluxes of albumin contribute to the apparent solute permeability coefficient for albumin (P_{sBSA}). The relative importance of these processes were discriminated using the recast form of the Patlak equation derived by Curry (Curry, 1984) and as subsequently expressed by Fu et al (Fu *et al.*, 1998):

$$\text{Equation 3.1} \quad P_s = P_d \cdot \frac{Pe}{(e^{Pe}-1)} + L_p(1 - \sigma)\Delta P_{eff}$$

where

$$\text{Equation 3.2} \quad Pe = \frac{L_p(1-\sigma)\Delta P_{eff}}{P_d}$$

and

$$\text{Equation 3.3} \quad \Delta P_{eff} = \Delta P - \sigma^{alb}\Delta\pi^{alb}$$

where P_d represents the true solute diffusive permeability coefficient for albumin across the vascular wall, and Pe is the Peclet number (ratio of convective to diffusive flux).

Statistical analysis

All statistics were calculated using Prism (GraphPad) software. Statistical significance was considered positive when a p value of <0.05 had been demonstrated. Unless otherwise expressed, all data are presented as mean \pm standard error of the mean (SEM). All n values represent the number of animals used unless otherwise stated. Two-sided parametric tests were employed for analysis of true value estimates of glycocalyx parameters and P_{sBSA} *in vivo* as well as glycocalyx depth measured from electron micrographs and the following statistical tests were employed: Pearson's rank for examination of correlation, paired t-test, two-way ANOVA, and one-way ANOVA were used for paired experiments; unpaired t-tests were used for unpaired comparisons. All post-hoc analyses used Bonferonni post-tests

RESULTS

Endothelial glycocalyx

Estimates of endothelial glycocalyx depth made in vessels perfused with R18 and FITC-WGA using the FWHM method yielded significantly higher measurements (1507 ± 136.9 nm, $n = 10$) than those determined in the same vessels using the peak to peak method of analysis (243.6 ± 22.44 nm, $n = 10$) ($p < 0.001$, paired t-test; Figure 3A). Using peak-to-peak measurements the fraction of vessel wall yielding positively resolvable glycocalyx measurements was 0.77 ± 0.04 ($n = 10$) and the mean peak I_f of FITC-WGA across vessel walls was 176.4 ± 21.17 ($n = 10$). As the peak I_f of FITC-WGA signal increased, the paired peak to peak depth of endothelial glycocalyx significantly decreased, indicating that the peak I_f of FITC-WGA may be influencing the anatomical location of the peak I_f of R18, thereby resulting in a reduction in peak-to-peak endothelial glycocalyx depth estimates ($p < 0.05$ by Pearson's correlation, $r = -0.6975$; Figure 3B)

Endothelial glycocalyx depth measured *in vivo* using both analysis methods (peak to peak and FWHM) were compared with the depth of endothelial glycocalyx measured at the same anatomical site of the same vessel *ex vivo* from paired electron micrographs. Paired comparisons demonstrated that endothelial glycocalyx depth estimated with FWHM (1376 ± 99.77 nm, $n = 5$) (Figure 3C) and peak to peak (243.6 ± 22.44 , $n = 5$) (Figure 3D) techniques both yielded significantly greater estimates of depth than that estimated from paired electron micrographs (78.09 ± 16.16 nm, $n = 15$) ($p < 0.001$, paired t-test). Endothelial glycocalyx depth measurements were therefore 3.1 - 17.6-fold greater using confocal microscopy *in vivo* than measurements at the same site using electron microscopy *ex vivo*, with the broad range dependent on the method used to analyse the confocal microscopy images.

Measurements of glycocalyx depth for TRITC-WGA and TMA-DPH peak-to-peak (622.7 ± 67.18 nm $n = 5$) methods were, on average, significantly greater than the previous depth estimates for FITC-WGA and R18 peak-to-peak (231.4 ± 24.4 nm, $n = 6$, $P < 0.001$ by unpaired t-test) (Figure 3E). Fractional coverage by resolvable endothelial glycocalyx was not significantly different using the two sets of fluorescent labels (TMA-DPH, TRITC-WGA: 0.7867 ± 0.03851 , $n = 5$; R18, FITC-WGA: 0.7028 ± 0.04291 , $n = 6$) ($P > 0.05$ unpaired t-test) (Figure 3F). Peak fluorescence intensity measurements were also not significant different between TRITC-WGA (269.0 ± 109.5 grayscale units $n = 5$) and FITC-WGA (123.6 ± 22.30 $n = 6$ grayscale units) ($P > 0.05$ unpaired t-test) (Figure 3G). Unlike the significant relation between endothelial glycocalyx depth measured with the peak-to-peak method and the peak I_f of FITC-WGA signal, there was no significant relation between peak-to-peak determined glycocalyx depth and the peak I_f of TRITC-WGA signal ($r = 0.29$, $p > 0.5$ Pearson's correlation).

Apparent solute permeability

To test the assumption of a linear relationship between the number of Alexa488-BSA molecules in a perfused vessel with the mean I_f measured in that same vessel *in vivo* (Equation 1.5), individual vessels were imaged during consecutive perfusion with the following concentrations of Alexa 488 BSA: 0 mg/ml, 0.003 mg/ml, 0.015 mg/ml, 0.03 mg/ml, 0.15 mg/ml, and 0.3 mg/ml of Alexa 488 BSA. There was a significant linear relationship between the number of Alexa Fluor 488 BSA molecules and the mean I_f measured within the perfused vessel ($r^2 = 0.9916$, $P < 0.0001$, Pearson's correlation) (Figure 4A, B). There was no significant difference between P_{sBSA} estimates made using these different concentrations of Alexa488-BSA in the same microvessel ($P > 0.05$ by one-way ANOVA) (Figure 4C).

Importance of endothelial glycocalyx sialic acids

To determine whether endothelial glycocalyx sialic acids contribute to endothelial glycocalyx structure and vessel wall permeability, endothelial glycocalyx parameters and solute permeability were measured in individual vessels before and after (or with and without) disruption of terminal

sialic acids by perfusion with neuraminidase. With the peak to peak method of analysis, there was no significant difference between glycocalyx depth at baseline (243.6 ± 22.44 nm, $n = 10$) and that measured after 20 minutes of treatment with vehicle (231.4 ± 24.4 nm, $n = 6$) ($p > 0.05$, two-way ANOVA Bonferroni post hoc analysis) (Figure 5A), but glycocalyx depth was significantly reduced within single vessels after 20 minutes of treatment with neuraminidase (185.0 ± 32.78 nm) when compared to baseline (288.9 ± 28.74 nm) ($p < 0.01$, $n = 5$, two-way ANOVA Bonferroni post hoc analysis) (Figure 5B). The technique with the peak-to-peak method of analysis was sufficiently sensitive to detect changes in endothelial glycocalyx depth in unpaired comparisons of vehicle- or neuraminidase-perfused vessels labelled with TRITC-WGA and TMA-DPH (rather than FITC-WGA and R18, as described above) (vehicle treatment: 622.7 ± 67.18 nm; neuraminidase treatment: 386.3 ± 10.82 nm; $p < 0.05$, unpaired t-test) (Figure 5C).

Removal of sialic acid residues with 20 minutes of treatment with neuraminidase also reduced the depth of endothelial glycocalyx as determined by the FWHM method of analysis (1646 ± 352.6 nm, $n = 5$, at baseline; 1223 ± 199.4 nm, $n = 5$, after neuraminidase) ($p < 0.05$, $n = 5$, two-way ANOVA Bonferroni post hoc analysis), with no significant change in endothelial glycocalyx depth as determined by the FWHM method when vessels were treated with vehicle (1479 ± 68.81 nm) compared to baseline (1355 ± 84.03 nm) ($p > 0.05$, two-way ANOVA Bonferroni post hoc analysis) (Figure 5D,E). Unpaired comparisons (TRITC-WGA and TMA-DPH) of FWHM measure of glycocalyx depth did not have sufficient discrimination to demonstrate a significant reduction in glycocalyx depth following treatment with neuraminidase (1492 ± 116.8 nm) when compared to vehicle treated control (1265 ± 150.5 nm) ($P > 0.05$ by unpaired t-test) (Figure 5F).

The fluorescence intensity of FITC-WGA (I_f) was not significantly altered after perfusion for 20 minutes with vehicle (123.6 ± 22.30 , $n = 6$) when compared to that measured at baseline (176.4 ± 21.17 , $n = 10$) ($p > 0.05$, two-way ANOVA Bonferroni post hoc analysis) (Figure 5G), but was significantly reduced following 20mins of neuraminidase perfusion (124.9 ± 13.53) when compared to that imaged at baseline (460.9 ± 48.21) ($n = 5$, $p < 0.001$, two-way ANOVA Bonferroni post hoc analysis). (Figure 5H). Unpaired comparisons of peak I_f of TRITC-WGA did not have sufficient discrimination to demonstrate a statistically significant change to glycocalyx staining intensity following treatment with neuraminidase (95.63 ± 24.53 nm) when compared to the vehicle treated control (269.0 ± 109.5 nm) ($p > 0.05$ by unpaired t-test) (Figure 5I).

The proportion of vessels with a glycocalyx depth greater than zero (fractional coverage), determined using the peak-to-peak method, was unchanged from baseline coverage (0.7650 ± 0.02563 , $n = 10$) after perfusion of vehicle (0.7028 ± 0.04291 , $n = 6$) ($p > 0.05$, two-way ANOVA Bonferroni post hoc analysis), and likewise was unchanged before (0.8500 ± 0.07397 , $n = 5$) and after perfusion with neuraminidase (0.8167 ± 0.05603 , $n = 5$) ($p > 0.05$, two-way ANOVA Bonferroni post hoc analysis) (Figure 5J and K). Unpaired comparisons (using TRITC-WGA and TMA-DPH) did reveal a significant reduction in glycocalyx fractional coverage following neuraminidase treatment (0.57 ± 0.07) when compared to the vehicle treated control (0.79 ± 0.04) ($p < 0.05$ by unpaired t-test) (Figure 5L).

Measurement of endothelial glycocalyx depth within electron micrographs revealed a significant reduction in glycocalyx depth for vessels treated with neuraminidase (40.01 ± 7.317 nm, $n = 7$) when compared to vessels treated with vehicle alone (78.09 ± 16.16 nm, $n = 5$) ($p < 0.05$, by unpaired t-test) (Figure 5M). The depth of the endothelial glycocalyx determined *in vivo* from peak-to-peak analysis demonstrated a significant positive linear relationship to the depth estimates of the endothelial glycocalyx in the same vessels using electron micrographs ($r = 0.7515$, $p < 0.05$, Pearson's correlation, 9 pairs) (Figure 5N). However, none of the other measurements of endothelial glycocalyx parameters obtained from confocal microscopy images (peak I_f , fractional coverage) correlated with the endothelial glycocalyx depth measurements from electron microscopy images (FWHM: $r = 0.1362$, $n = 9$ pairs, $p > 0.05$ Pearson's correlation; peak I_f : $r = -0.5184$, $n = 9$ pairs, $p > 0.05$ Pearson's correlation; fractional coverage: $r = -0.2734$, $n = 9$ pairs, p

> 0.05 Pearson's correlation).

Treatment of perfused microvessels with vehicle solution for 20-25mins did not significantly alter P_{sBSA} (from $4.0 \pm 0.43 \times 10^{-6} \text{ cm.s}^{-1}$ to $2.6 \pm 0.44 \times 10^{-6} \text{ cm.s}^{-1}$; $n=5$ pairs; $p > 0.05$, two-way ANOVA with Bonferroni's correction), but disruption of sialic acids with neuraminidase treatment did significantly increase P_{sBSA} 6.8-fold (from $3.5 \pm 1.0 \times 10^{-6} \text{ cm.s}^{-1}$ to $23.8 \pm 8.3 \times 10^{-6} \text{ cm.s}^{-1}$ to; $n=4$ pairs; $p < 0.001$ by two-way ANOVA) (Figure 6A). The rise in permeability in response to neuraminidase treatment was progressive and linear (r^2 0.9216; $p < 0.01$, Pearson's correlation) (figure 6B). There was a significant inverse linear relationship between P_{sBSA} and endothelial glycocalyx fractional coverage in the same vessels in neuraminidase-treated and vehicle-treated vessels ($r = -0.731$, $n = 9$ pairs, $p < 0.05$ Pearson's correlation) (figure 6C). Likewise there was an inverse relationship between P_{sBSA} and endothelial glycocalyx depth as assessed by the peak-to-peak analysis of TRITC-WGA in the same vessels in neuraminidase-treated and vehicle-treated vessels, ($r = -0.80$, $p < 0.05$ by Spearman's correlation) but this relationship was not linear (best fit: single one phase decay curve; $\text{depth} = 330\text{nm} + 607\text{nm} \times e^{-0.38 \times P_s}$) (figure 6D).

Over the same time course, disruption of sialic acids with neuraminidase treatment also significantly increased hydraulic conductivity by 1.9-fold (baseline: $1.39 \pm 0.32 \times 10^{-7} \text{ cm.s}^{-1} \cdot \text{cmH}_2\text{O}^{-1}$; neuraminidase: $2.68 \pm 0.81 \times 10^{-7} \text{ cm.s}^{-1} \cdot \text{cmH}_2\text{O}^{-1}$; $n=7$ pairs; $p < 0.05$, Wilcoxon) (Figure 6E) and significantly reduced reflection coefficient (baseline: 0.96 ± 0.01 ; neuraminidase: 0.87 ± 0.03 ; $n = 7$ pairs, $p < 0.05$, paired t-test) (Figure 6F).

Using measured and calculated parameter values (P_{sBSA} , L_p , σ , π_{BSA}) from these experiments, and calculating Peclet number for these experiments (equation 3.1), true diffusive BSA solute permeability coefficient values (P_d) were 7-fold and significantly increased by disruption of sialic acids by neuraminidase treatment ($3.38 \times 10^{-6} \text{ cm.s}^{-1}$ under baseline conditions; $2.41 \times 10^{-5} \text{ cm.s}^{-1}$ after neuraminidase treatment; $p < 0.001$, unpaired t-test) (figure 6G).

DISCUSSION

In this study we have successfully developed methods for paired, real-time, direct *in vivo* assessment of endothelial glycocalyx structure and dependent microvascular function (permeability). These techniques demonstrate that measurements of the depth of endothelial glycocalyx are highly dependent on the labelling, detection and analysis methods employed, and vary by more than an order of magnitude. Highest values are obtained by full-width half-maximum analysis of fluorescently-labelled WGA-lectin binding to the endothelial glycocalyx, and lowest values are obtained from electron micrographs of alcian blue-labelled endothelial glycocalyx from the same vessel. Estimating the anatomical distance between peak signals from endothelial glycocalyx and endothelial cell membrane labels with distinct fluorescence emission spectra provides the most sensitive and reliable measure of endothelial glycocalyx depth. Sialic acid residues within the endothelial glycocalyx regulate glycocalyx structure, as well as the permeability of the vessel wall to both water and albumin. Neuraminidase-induced changes in glycocalyx structure (by fluorescence and electron microscopy) correlated with changes in transvascular solute flux.

Sialic acids cap a range of glycoproteins within the endothelial glycocalyx (e.g. (Varki, 2008)) and are present at high density on the endothelial cell surface ($<50 \times 10^6/\mu\text{m}^2$: (Born & Palinski, 1989), including in human microvessels (Tatsuzuki *et al.*, 2009), and are potentially found at increased density at the endothelial cell surface adjacent to the dominant route for water and solute flux across the vessel wall: interendothelial clefts (Bai & Wang, 2014). The current studies demonstrate that disruption of sialic acid residues within the endothelial glycocalyx reduces the degree of reflection of albumin by the microvessel wall, and increases the conductance of water, and therefore sialic acid residues within the endothelial glycocalyx are principal regulators of microvessel permeability.

These findings are in direct conflict with the only other investigation of the effect of sialic acid disruption on true permeability coefficients *in vivo* (Mason *et al.*, 1977), in which neuraminidase had no effect on mesenteric microvessel hydraulic conductivity. Whilst it is possible that species differences (frog vs rat) account for this difference, the highly conserved nature of endothelial sialic acid expression (Aamelfot *et al.*, 2014) argues against this possibility. We suggest that it is more likely that temperature differences (frog $\sim 15^\circ\text{C}$; rat 37°C) permit greater enzyme activity and hence greater degree of sialic acid disruption in the current study, thereby revealing an important role of sialic acids in regulating permeability. The previous study in frogs did not perform paired labeling of glycocalyx or other ultra-structural components, and thus active changes in structure assumed to be brought about by neuraminidase were not confirmed (Mason *et al.*, 1977) as they have been here.

Other evidence supporting the concept of sialic acids regulating microvascular permeability arise from systems in which the measures of permeability coefficients are confounded by the model used or by unregulated variables. For example, disruption of endothelial glycocalyx sialic acids with neuraminidase was shown to increase permeability and reduce glycocalyx depth of endothelial cells *in vitro* (Singh *et al.*, 2007; Cioffi *et al.*, 2012). Whilst cultured endothelial cells display permeability coefficients that are orders of magnitude greater than those observed in intact vessels *in vivo* (Curry, 2005), and possess an endothelial glycocalyx that differs substantially from that observed on intact vessels (Chappell *et al.*, 2009), these findings are consistent with the demonstrated importance of sialic acids in regulating multiple permeability coefficients *in vivo* in the current report. Investigations into the effects of neuraminidase on water and albumin flux in other microvessel beds support our findings that true microvessel wall permeability coefficients are regulated by sialic acid residues. One such study observed alveolar oedema formation within isolated-perfused lungs from rats treated with neuraminidase (0.5 U/ml for 30 minutes) demonstrating an ~ 8 fold increase in transvascular perfusate flux (calculated from the change in organ weight at different perfusion pressures) indicating that sialoglycoproteins expressed within

the endothelial glycocalyx of pulmonary microvessel beds may influence solute and water flux (Cioffi *et al.*, 2012). Since sialic acids also regulate glycocalyx-mediated mechanotransduction (Tarbell & Pahakis, 2006) and consequent vessel dilation (Kumagai *et al.*, 2009), observed increases in solute or water flux following neuraminidase treatment (Cioffi *et al.*, 2012; Salmon *et al.*, 2012) may represent a vasodilation-induced increase in the hydrostatic forces driving solute and water flux rather than a true change in the permeability of the vessel wall. The current studies confirm that, over-and-above regulating vessel diameter and hence the magnitude of Starling forces driving solute and fluid flux, sialic acids also regulate the permeability of microvessel walls.

There are a number of biophysical and biochemical mechanisms through which sialic acids may regulate microvascular permeability. The contribution of the endothelial glycocalyx to hydraulic permeability is thought to be imparted largely through glycocalyx depth (Adamson, 1990), with a reduction in glycocalyx thickness sufficient to explain increased hydraulic conductivity, as observed in response to sialic acid disruption here. The endothelial glycocalyx has been calculated to contribute approximately 60% to the hydraulic resistance of the vessel wall (Adamson *et al.*, 2004). The ~2-fold increase in hydraulic conductivity following neuraminidase treatment is comparable to the ~2.5-fold increase in hydraulic conductivity following pronase treatment of frog mesenteric microvessels (Adamson, 1990), and also similar to the ~2.3-fold increase in hydraulic conductivity observed in rats with spontaneous proteinuric chronic kidney disease and reduced glycocalyx depth (Salmon *et al.*, 2012). The relationship between glycocalyx depth and albumin permeability has been less clear: the non-linear relation between these parameters indicated here (figure 6D) illustrates one possible aspect of that relationship. The presence of glycocalyx after neuraminidase treatment with a reduction in thickness of a similar relative level (60% for confocal, 50% for electron microscopy) suggests that the glycocalyx needs to reach a minimal depth before being able to impede albumin flux. Alternative explanations include a potential change in glycocalyx coverage in critical permeability-determining regions, such as in microdomains overlying interendothelial clefts. Furthermore, since other structural and biological aspects of the glycocalyx (such as 3D ultrastructure and electrical charge) have not been assessed with these techniques, parameters other than depth and spatial distribution may also impact on the relationship between glycocalyx structure and albumin permeability. This could be further investigated with more information on the structure of the glycocalyx, such as that generated using complex staining techniques (Arkill *et al.*, 2011) to be able to build testable models of how the glycocalyx regulates albumin permeability.

The observed reduction in endothelial glycocalyx thickness is unlikely, however, to explain the observed reduction in reflection coefficient. Molecules are reflected back into the vessel lumen during convective drag because the functional pore aperture, determined by the combination of steric and electrochemical pore properties, is too small to allow large solute molecules (such as BSA) to pass. The ordered lattice-like structure of the endothelial glycocalyx imparts efficient molecular sieving properties (Arkill *et al.*, 2011), with the arrangement, dimensions and charge of the individual fibres of the lattice all dictating the efficiency with which solutes are reflected back into the vessel lumen under conditions of convective flux (Hu *et al.*, 2000; Squire *et al.*, 2001; Weinbaum *et al.*, 2003; Arkill *et al.*, 2011). Membrane-bound components of the endothelial glycocalyx display the necessary quasi-ordered arrangement to contribute to this ordered lattice (Squire *et al.*, 2001), raising the possibility that sialic acid-capped, membrane-bound glycoproteins and/or proteoglycans may be important in regulating the molecular sieving and hence the reflection coefficient of microvessel walls. For example, sialic acid-depleted glycoproteins may form a pore that provides less resistance to the passage of albumin molecules because of reduced net negative charge on the fibres surrounding the pore, thereby facilitating the passage of negatively charged albumin molecules through the pore. However, removal of sialic acid residues did not significantly alter the surface charge of endothelial cells (Vargas *et al.*, 1989), and hence the neuraminidase effect observed here may be steric rather than electrochemical, through altering the shape, size or interactions between sialic acid capped molecules that comprise the pore. Combining the current structure-function studies with a glycan-specific electron dense labels

(e.g. gold particle-labelled lectins - (Baldwin & Winlove, 1984)) and fourier transformation analysis to investigate changes to the ordered arrangement of sialic acid residues within the endothelial glycocalyx may be informative in this regard.

Sialic acid disruption might also (or alternatively) result in secondary changes within the endothelial glycocalyx, thereby altering permeability coefficients. For example, re-arrangement or activation of glycocalyx-embedded receptors or inter-endothelial cleft molecules such as VE-cadherin may follow sialic acid disruption (Geyer *et al.*, 1999). However, re-organisation of the interendothelial cleft molecules occurs hours after sialic acid disruption (Cioffi *et al.*, 2012), more slowly than both the increase in permeability and the change in endothelial glycocalyx measurements observed over minutes in these studies. Direct modification of the endothelial glycocalyx therefore appears to be a more likely explanation for the changes in permeability measured here. Disrupting the interaction between sialoglycoproteins-based arginine residues and albumin molecules may have reduced the adsorbed fraction of albumin within the endothelial glycocalyx, reducing albumin-dependent sphingosine-1-phosphate signalling leading to active shedding of other glycocalyx (Adamson *et al.*, 2012; Curry *et al.*, 2012; Curry & Adamson, 2013; Zeng *et al.*, 2013; Adamson *et al.*, 2014). However, these secondary changes again point to an important role for sialic acid residues within the endothelial glycocalyx in regulating microvessel permeability.

These simultaneous changes in microvessel permeability and endothelial glycocalyx structure have been revealed through novel techniques that permit examination of microvessel permeability coefficients as well as real-time confocal microscopy and post-hoc electron microscopy examinations of the endothelial glycocalyx covering the same portion of the same vessel. Neuraminidase-induced changes in the endothelial glycocalyx structure identified with confocal microscopy correlated with parallel changes in the endothelial glycocalyx measured from electron micrographs of the same portion of the same vessel *in vivo*. A number of processing steps are required to visualise the endothelial glycocalyx by electron microscopy, including albumin-free perfusion prior to Alcian Blue labelling, glutaraldehyde fixation, and dehydration steps, each of which may affect glycocalyx appearance in electron micrographs. Nevertheless, the findings from the current report provide confidence that, at least under the conditions reported here, changes in the structure of the endothelial glycocalyx observed by standard electron microscopy techniques correlate well with both direct imaging of the endothelial glycocalyx *in vivo* (i.e. pre-EM processing) and with the function of the vessel wall.

The absolute value of endothelial glycocalyx depth measurements with this method is within the range reported by others using a variety of techniques (for review see (Curry & Adamson, 2012)), but above the theoretical maximum threshold depth compatible with the demonstrated hydraulic conductivity of vessel walls (Curry & Adamson, 2013). Importantly, different analysis methods of the same lectin-labelled images generated a 6-fold range of glycocalyx depth measurements (FWHM to peak-to-peak methods), and the same analysis technique using different membrane and glycocalyx labels (peak-to-peak techniques) generated a ~2.5-fold range of glycocalyx depths. Even the lowest estimate of glycocalyx depth from confocal images was ~3-fold greater than depth assessed from electron micrographs. Clearly the method used to estimate glycocalyx depth has a large impact on the absolute value of endothelial glycocalyx depth reported, even when multiple assessments are made on the same vessel under identical conditions. This makes it difficult to compare studies using varied methodologies to judge whether there are true differences in the endothelial glycocalyx between different vessel beds. These findings suggest that quantifying relative changes in glycocalyx depth in response to individual experimental manipulations under identical experimental conditions may be more reliable than interpreting the absolute depth of the endothelial glycocalyx from varied techniques.

Nevertheless, the peak-to-peak method, based on the anatomical distance between the peak endothelial plasmalemmal signal and the peak glycocalyx-bound lectin signal, [1] enabled

discrimination of neuraminidase-induced changes in confocal-determined glycocalyx depth measurements under paired and unpaired conditions, [2] with different glycocalyx and membrane labels, [3] correlated well with changes in endothelial glycocalyx depth measured by electron microscopy, [4] and correlated with changes in vessel wall function, thereby proving the most sensitive and reliable real-time *in vivo* method for quantifying changes in the endothelial glycocalyx. The choice of glycocalyx and endothelial cell membrane labels for these peak-to-peak assessments included FITC-WGA/R18, with demonstrated limitations including fluorescence emission signal bleed through and interactions between the magnitude of fluorescence signal and glycocalyx depth. TRITC-WGA/TMA-DPH assessments did not suffer from either these theoretical or measurement errors, but the variability of peak fluorescence signal was greater and will benefit from assessment in larger sample sizes. Peak to peak measurements were preferred over full-width half-maximum measurements, as previous studies have indicated the presence of lectin binding to sialic acid residues on the abluminal side of the endothelial cell (e.g. (Oltean *et al.*, 2015)) that broaden the resulting fluorescent signal to generate falsely-elevated estimates of "endothelial glycocalyx" depth. Failing to discriminate between luminal and abluminal surface glycocalyx components may have contributed to some of the higher values for glycocalyx depth reported in the literature, particularly in the absence of simultaneous imaging of the endothelial cell surface (Yen *et al.*, 2012). Full-width half-maximum, peak fluorescence intensity and fractional coverage analysis methods were not capable of discriminating neuraminidase-induced changes in the endothelial glycocalyx reliably (e.g. in paired and unpaired studies); none correlated with changes by electron microscopy; and neither peak fluorescence intensity or full width half maximum measurements correlated with changes in solute permeability; indicating that comparative assessment of glycocalyx signal relative to the endothelial cell surface is an important facet of measuring glycocalyx depth.

These direct labelling methods for quantifying the endothelial glycocalyx are an important complement to indirect methods of glycocalyx assessment, in which the distance of a luminal tracer (electron-dense lipid droplets, fluorescently-labelled circulating molecules or microparticles, circulating cells) from the vessel wall is assumed to represent an impenetrable depth of endothelial glycocalyx. Many such methods need to take into account partial permeation of the tracer into the endothelial glycocalyx (Michel & Curry, 2009), as well as the influence of the glycocalyx on the spatial profile of substances flowing through the vessel (Pries *et al.*, 1997). As such, changes in haemodynamics as well as changes in the endothelial glycocalyx could impact on the distance of the tracer from the vessel wall, thereby confounding the assumption that this distance represents the depth of the endothelial glycocalyx. Stop-flow studies (Haraldsson, 2014) and studies on small diameter vessels (Damiano, 1998) have been employed to overcome this confounding influence. Direct glycocalyx labelling methods reported here complement the critical *in vivo* assessments of glycocalyx-dependent vascular functions. These considerations are also important because of the recent spread of indirect methods of estimating endothelial glycocalyx depth into the clinical arena (Lee *et al.*, 2014), using technologies that are not designed to directly measure the anatomical location of the vessel wall and therefore can only estimate a non-perfused boundary region. Validation studies coupling these potentially revolutionary clinically-applicable methodologies with direct assessment of the endothelial glycocalyx are warranted.

Our study has a number of potential limitations. Neuraminidase cleaves the O-glycosidic linkages between the terminal neuraminic (sialic) acids and the subterminal sugars (Cassidy *et al.*, 1965), but almost all enzymatic manipulations of endothelial glycocalyx components are prone to direct but off-target enzymatic disruption of other components of the endothelial glycocalyx (Tarbell, 2010). Neuraminidase removes <5% of other components of the endothelial glycocalyx (Pahakis *et al.*, 2007). Wheat germ agglutinin lectin also labels N-acetyl-glucosamine residues within various glycosaminoglycans, although more than 60% of WGA-labelled structures are sialic acids (Barker *et al.*, 2004). Overall, the >95% specificity of neuraminidase and >60% specificity of WGA for sialic acid residues indicates that no more than 2% of the observed reduction in WGA signal after neuraminidase treatment is likely to be due to an effect on other glycocalyx structures.

Three parameters of microvascular permeability were measured in rat mesenteric microvessels under identical experimental conditions before and after exposure to neuraminidase, but true permeability coefficients (hydraulic conductivity and reflection coefficient) were measured in different vessels from those in which measurements of endothelial glycocalyx were made. This represents a technical limitation, since different microscopes were required for confocal and light microscopy studies, and it was not practical to maintain anaesthesia and transport animals between rigs. Nevertheless there is good concordance amongst the results, and changes in apparent solute permeability in one set of experiments are explained by the observed changes in hydraulic conductivity and reflection coefficient observed in parallel experiments. Of note, however, is that despite this concordance the magnitude of the P_{sBSA} values reported here ($\sim 2.8 \times 10^{-6} \text{ cm.s}^{-1}$ under normal and vehicle treated conditions) are greater than the ~ 0.4 to $1.0 \times 10^{-6} \text{ cm.s}^{-1}$ measured in rat mesenteric microvessels by other researchers (Fu & Shen, 2004; Cai *et al.*, 2012; Curry *et al.*, 2012; Adamson *et al.*, 2014). In contrast, hydraulic conductivity values ($1.39 \times 10^{-7} \text{ cm.s}^{-1}.\text{cmH}_2\text{O}^{-1}$) are in the range reported previously ($1.2 - 2.43 \times 10^{-7} \text{ cm.s}^{-1}.\text{cmH}_2\text{O}^{-1}$: (Kendall & Michel, 1995; Michel & Kendall, 1997; Curry *et al.*, 2003; Salmon *et al.*, 2009; Curry *et al.*, 2012) as are reflection coefficient values (0.96; e.g. 0.94: (Kendall & Michel, 1995)). This suggests that technical factors relating to the P_{sBSA} experiments may be responsible for these higher P_{sBSA} values, such as reduced S-1-P content of erythrocyte-free perfusate in P_{sBSA} and glycocalyx imaging studies (necessitated by the use of narrow-lumen double-barrelled theta pipettes in contrast to erythrocyte-containing perfusate in hydraulic conductivity / reflection coefficient studies (Curry *et al.*, 2012)), or an influence of the alexa-488 label applied to BSA (as demonstrated for other fluorescent labels: (Bingaman *et al.*, 2003)). Low S1P conditions may compromise glycocalyx and intercellular junction integrity, affecting baseline permeability states, and this hinders detailed biophysical interpretation of sialic acid-regulated pathways for transvascular passage of albumin.

The perfused single vessel methodology adopted here has also been critiqued in the literature. However, single vessel perfusion permeability techniques have been described as the "squid giant axon" of permeability studies (Curry, 2005): the current report extends their utility to real-time *in vivo* structure-function assessments of the endothelial glycocalyx as a complement to the range of other microvascular endothelial glycocalyx studies already available or in development.

Given the widespread importance of the endothelial glycocalyx for normal physiology and a broad number of disease states, we have expanded the range of techniques that permit direct studies of the structure of the endothelial glycocalyx, as well as dependent microvascular functions. Through these novel techniques, we demonstrate that sialic acid residues within the endothelial glycocalyx are critical regulators of microvascular permeability to both water and albumin.

COMPETING INTERESTS

The authors declare no competing interests

AUTHOR CONTRIBUTIONS.

All authors interpreted the data, and revised the article critically for important intellectual content. KA, CN and DOB also analysed data. KB, KA, CN, DOB and AS designed the experiments. KB and AS collected and analysed the data, and drafted the article. AS conceived the study.

FUNDING.

The authors gratefully acknowledge funding from the Medical Research Council (G0802829) to AS.

ACKNOWLEDGEMENTS

The authors acknowledge support from Nikon(UK) to develop the apparatus for these experiments, to members of the Microvascular Research Laboratories and Academic Renal Units at the University of Bristol for critical discussions and support, and to members of the British Microcirculation Society for critical review of the work in abstract form (BMS conference 2014)

COVER FIGURE

Figure 2B-F

REFERENCES

- Aamelfot M, Dale OB, Weli SC, Koppang EO & Falk K. (2014). The in situ distribution of glycoprotein-bound 4-O-Acetylated sialic acids in vertebrates. *Glycoconjugate journal* **31**, 327-335.
- Adamson RH. (1990). Permeability of frog mesenteric capillaries after partial pronase digestion of the endothelial glycocalyx. *The Journal of physiology* **428**, 1-13.
- Adamson RH, Clark JF, Radeva M, Kheirilomoom A, Ferrara KW & Curry FE. (2014). Albumin modulates S1P delivery from red blood cells in perfused microvessels: mechanism of the protein effect. *AJP: Heart and Circulatory Physiology* **306**, H1011-H1017.
- Adamson RH, Lenz JF, Zhang X, Adamson GN, Weinbaum S & Curry FE. (2004). Oncotic pressures opposing filtration across non-fenestrated rat microvessels. *The Journal of physiology* **557**, 889-907.
- Adamson RH, Sarai RK, Clark JF, Altangerel A, Thirkill TL & Curry FE. (2012). Attenuation by sphingosine-1-phosphate of rat microvessel acute permeability response to bradykinin is rapidly reversible. *Am J Physiol Heart Circ Physiol* **302**, H1929-1935.
- Adembri C, Sgambati E, Vitali L, Selmi V, Margheri M, Tani A, Bonaccini L, Nosi D, Caldini AL, Formigli L & De Gaudio AR. (2011). Sepsis induces albuminuria and alterations in the glomerular filtration barrier: a morphofunctional study in the rat. *Critical care (London, England)* **15**, R277.
- Arkill KP, Knupp C, Michel CC, Neal CR, Qvortrup K, Rostgaard Jd & Squire JM. (2011). Similar endothelial glycocalyx structures in microvessels from a range of Mammalian tissues: evidence for a common filtering mechanism? *Biophys J* **101**, 1046-1056.
- Bai K & Wang W. (2014). Shear stress-induced redistribution of the glycocalyx on endothelial cells in vitro. *Biomechanics and modeling in mechanobiology* **13**, 303-311.
- Baldwin AL & Winlove CP. (1984). Effects of perfusate composition on binding of ruthenium red and gold colloid to glycocalyx of rabbit aortic endothelium. *Journal of Histochemistry & Cytochemistry* **32**, 259-266.
- Barker AL, Konopatskaya O, Neal CR, Macpherson JV, Whatmore JL, Winlove CP, Unwin PR & Shore AC. (2004). Observation and characterisation of the glycocalyx of viable human endothelial cells using confocal laser scanning microscopy. *Physical Chemistry Chemical Physics* **6**, 1006-1011.
- Bates DO. (1998). The chronic effect of vascular endothelial growth factor on individually perfused frog mesenteric microvessels. *J Physiol* **513 (Pt 1)**, 225-233.
- Bingaman S, Huxley VH & Rumbaut RE. (2003). Fluorescent Dyes Modify Properties of Proteins Used in Microvascular Research. *Microcirculation* **10**, 221-231.
- Born GV & Palinski W. (1989). Increased microvascular resistance to blood flow in the rat hindlimb after perfusion with neuraminidase. *The Journal of physiology* **419**, 169-176.
- Cai B, Fan J, Zeng M, Zhang L & Fu BM. (2012). Adhesion of malignant mammary tumor cells MDA-MB-231 to microvessel wall increases microvascular permeability via degradation of endothelial surface glycocalyx. *Journal of applied physiology (Bethesda, Md : 1985)* **113**,

1141-1153.

- Cassidy JT, Jourdian GW & Roseman S. (1965). The sialic acids. VI. Purification and properties of sialidase from *Clostridium perfringens*. *The Journal of biological chemistry* **240**, 3501-3506.
- Chappell D, Jacob M, Paul O, Rehm M, Welsch U, Stoeckelhuber M, Conzen P & Becker BF. (2009). The Glycocalyx of the Human Umbilical Vein Endothelial Cell: An Impressive Structure Ex Vivo but Not in Culture. *Circulation Research* **104**, 1313-1317.
- Cioffi DL, Pandey S, Alvarez DF & Cioffi EA. (2012). Terminal sialic acids are an important determinant of pulmonary endothelial barrier integrity. *American journal of physiology Lung cellular and molecular physiology* **302**, L1067-1077.
- Cuniberti LA, Martinez V, Schachter J, Magarinos G, Meckert PC, Laguens RP, Levenson J & Werba JP. (2005). Sialic acid as a protective barrier against neointima development. *Atherosclerosis* **181**, 225-231.
- Curry F-R. (2005). Microvascular Solute and Water Transport. *Microcirculation* **12**, 17-31.
- Curry FE. (1984). Mechanics and thermodynamics of transcapillary exchange. In *Handbook of Physiology, Section 2: The Cardiovascular System Volume IV Microcirculation, Part 1*, ed. Renkin EM & Michel CC, pp. 309-374. American Physiological Society, Bethesda.
- Curry FE & Adamson RH. (2012). Endothelial glycocalyx: permeability barrier and mechanosensor. *Ann Biomed Eng* **40**, 828-839.
- Curry FE, Clark JF & Adamson RH. (2012). Erythrocyte-derived sphingosine-1-phosphate stabilizes basal hydraulic conductivity and solute permeability in rat microvessels. *Am J Physiol Heart Circ Physiol* **303**, H825-834.
- Curry FE & Michel CC. (1980). A fiber matrix model of capillary permeability. *Microvasc Res* **20**, 96-99.
- Curry FE, Zeng M & Adamson RH. (2003). Thrombin increases permeability only in venules exposed to inflammatory conditions. *Am J Physiol Heart Circ Physiol* **285**, H2446-2453.
- Curry FRE & Adamson RH. (2013). Tonic regulation of vascular permeability. *Acta Physiologica* **207**, 628-649.
- Damiano ER. (1998). The effect of the endothelial-cell glycocalyx on the motion of red blood cells through capillaries. *Microvasc Res* **55**, 77-91.
- Dekan G, Gabel C & Farquhar MG. (1991). Sulfate contributes to the negative charge of podocalyxin, the major sialoglycoprotein of the glomerular filtration slits. *Proceedings of the National Academy of Sciences of the United States of America* **88**, 5398-5402.
- Florian JA. (2003). Heparan Sulfate Proteoglycan Is a Mechanosensor on Endothelial Cells. *Circulation Research* **93**, 136e-142.
- Fu BM, Adamson RH & Curry FE. (1998). Test of a two-pathway model for small-solute exchange across the capillary wall. *Am J Physiol* **274**, H2062-2073.
- Fu BM & Shen S. (2004). Acute VEGF effect on solute permeability of mammalian microvessels in vivo. *Microvasc Res* **68**, 51-62.

- Gao L & Lipowsky HH. (2010). Composition of the endothelial glycocalyx and its relation to its thickness and diffusion of small solutes. *Microvasc Res* **80**, 394-401.
- Gelberg H, Healy L, Whiteley H, Miller LA & Vimr E. (1996). In vivo enzymatic removal of alpha 2-->6-linked sialic acid from the glomerular filtration barrier results in podocyte charge alteration and glomerular injury. *Lab Invest* **74**, 907-920.
- Geyer H, Geyer R, Odenthal-Schnittler M & Schnittler HJ. (1999). Characterization of human vascular endothelial cadherin glycans. *Glycobiology* **9**, 915-925.
- Gorog P, Schraufstatter I & Born GV. (1982). Effect of removing sialic acids from endothelium on the adherence of circulating platelets in arteries in vivo. *Proceedings of the Royal Society of London Series B, Containing papers of a Biological character Royal Society (Great Britain)* **214**, 471-480.
- Gretz JE & Duling BR. (1995). Measurement uncertainties associated with the use of bright-field and fluorescence microscopy in the microcirculation. *Microvasc Res* **49**, 134-140.
- Haraldsson B. (1986). Physiological studies of macromolecular transport across capillary walls. Studies on continuous capillaries in rat skeletal muscle. *Acta physiologica Scandinavica Supplementum* **553**, 1-40.
- Haraldsson BS. (2014). The endothelium as part of the integrative glomerular barrier complex. *Kidney international* **85**, 8-11.
- Hu X, Adamson RH, Liu B, Curry FE & Weinbaum S. (2000). Starling forces that oppose filtration after tissue oncotic pressure is increased. *Am J Physiol Heart Circ Physiol* **279**, H1724-1736.
- Huxley VH, Curry FE & Adamson RH. (1987). Quantitative fluorescence microscopy on single capillaries: alpha-lactalbumin transport. *Am J Physiol* **252**, H188-197.
- Huxley VH & Williams DA. (2000). Role of a glycocalyx on coronary arteriole permeability to proteins: evidence from enzyme treatments. *Am J Physiol Heart Circ Physiol* **278**, H1177-1185.
- Jeansson M, Bjorck K, Tenstad O & Haraldsson B. (2009). Adriamycin alters glomerular endothelium to induce proteinuria. *J Am Soc Nephrol* **20**, 114-122.
- Jeansson M, Granqvist AB, Nystrom JS & Haraldsson B. (2006). Functional and molecular alterations of the glomerular barrier in long-term diabetes in mice. *Diabetologia* **49**, 2200-2209.
- Jeansson M & Haraldsson B. (2003). Glomerular size and charge selectivity in the mouse after exposure to glucosaminoglycan-degrading enzymes. *J Am Soc Nephrol* **14**, 1756-1765.
- Kendall S & Michel CC. (1995). The measurement of permeability in single rat venules using the red cell microperfusion technique. *Exp Physiol* **80**, 359-372.
- Kumagai R, Lu X & Kassab GS. (2009). Role of glycocalyx in flow-induced production of nitric oxide and reactive oxygen species. *Free Radic Biol Med* **47**, 600-607.
- Lee DH, Dane MJ, van den Berg BM, Boels MG, van Teeffelen JW, de Mutsert R, den Heijer M,

- Rosendaal FR, van der Vlag J, van Zonneveld AJ, Vink H & Rabelink TJ. (2014). Deeper penetration of erythrocytes into the endothelial glycocalyx is associated with impaired microvascular perfusion. *PLoS one* **9**, e96477.
- Levick JR & Michel CC. (2010). Microvascular fluid exchange and the revised Starling principle. *Cardiovascular Research* **87**, 198-210.
- Mason JC, Curry FE & Michel CC. (1977). The effects of proteins upon the filtration coefficient of individually perfused frog mesenteric capillaries. *Microvasc Res* **13**, 185-202.
- Michel CC & Curry F-RE. (2009). Glycocalyx volume: a critical review of tracer dilution methods for its measurement. *Microcirculation* **16**, 213-219.
- Michel CC & Kendall S. (1997). Differing effects of histamine and serotonin on microvascular permeability in anaesthetized rats. *J Physiol* **501 (Pt 3)**, 657-662.
- Michel CC & Phillips ME. (1979). The effects of Ficoll 70 on bovine serum albumin on the permeability properties of individually perfused frog mesenteric capillaries [proceedings]. *The Journal of physiology* **291**, 39p.
- Michel CC & Phillips ME. (1987). Steady-state fluid filtration at different capillary pressures in perfused frog mesenteric capillaries. *The Journal of physiology* **388**, 421-435.
- Nassimizadeh M, Ashrafi H, Drury NE, Howell NJ, Digby J, Pagano D, Frenneaux MP & Born GV. (2010). Reduced negative surface charge on arterial endothelium explains accelerated atherosclerosis in type 2 diabetic patients. *Diab Vasc Dis Res* **7**, 213-215.
- Oltean S, Qiu Y, Ferguson JK, Stevens M, Neal C, Russell A, Kaura A, Arkill KP, Harris K, Symonds C, Lacey K, Wijeyaratne L, Gammons M, Wylie E, Hulse RP, Alsop C, Cope G, Damodaran G, Betteridge KB, Ramnath R, Satchell SC, Foster RR, Ballmer-Hofer K, Donaldson LF, Barratt J, Baelde HJ, Harper SJ, Bates DO & Salmon AH. (2015). Vascular Endothelial Growth Factor-A165b Is Protective and Restores Endothelial Glycocalyx in Diabetic Nephropathy. *Journal of the American Society of Nephrology : JASN* **26**, 1889-1904.
- Pahakis MY, Kosky JR, Dull RO & Tarbell JM. (2007). The role of endothelial glycocalyx components in mechanotransduction of fluid shear stress. *Biochem Biophys Res Commun* **355**, 228-233.
- Peti-Peterdi J, Toma I, Sipos A & Vargas SL. (2009). Multiphoton Imaging of Renal Regulatory Mechanisms. *Physiology* **24**, 88-96.
- Pries AR, Secomb TW, Jacobs H, Sperandio M, Osterloh K & Gaehtgens P. (1997). *Microvascular blood flow resistance: role of endothelial surface layer*, vol. 273.
- Sakarya S, Rifat S, Zhou J, Bannerman DD, Stamatou NM, Cross AS & Goldblum SE. (2004). Mobilization of neutrophil sialidase activity desialylates the pulmonary vascular endothelial surface and increases resting neutrophil adhesion to and migration across the endothelium. *Glycobiology* **14**, 481-494.
- Salmon A, Ferguson J, Burford J, Gevorgyan A, Nakano D, Harper S, Bates D & Peti-Peterdi J. (2012). Widespread loss of endothelial glycocalyx links albuminuria and systemic vascular dysfunction. *J Am Soc Nephrol* **23**, 1339-1350.

- Salmon AHJ, Neal CR, Sage LM, Glass CA, Harper SJ & Bates DO. (2009). Angiotensin-1 alters microvascular permeability coefficients in vivo via modification of endothelial glycocalyx. *Cardiovascular Research* **83**, 24-33.
- Salmon AHJ & Satchell SC. (2012). Endothelial glycocalyx dysfunction in disease: albuminuria and increased microvascular permeability. *The Journal of Pathology* **226**, 562-574.
- Schindelin J, Arganda-Carreras I, Frise E, Kaynig V, Longair M, Pietzsch T, Preibisch S, Rueden C, Saalfeld S, Schmid B, Tinevez JY, White DJ, Hartenstein V, Eliceiri K, Tomancak P & Cardona A. (2012). Fiji: an open-source platform for biological-image analysis. *Nat Methods* **9**, 676-682.
- Singh A, Satchell SC, Neal CR, McKenzie EA, Tooke JE & Mathieson PW. (2007). Glomerular Endothelial Glycocalyx Constitutes a Barrier to Protein Permeability. *Journal of the American Society of Nephrology* **18**, 2885-2893.
- Squire JM, Chew M, Nneji G, Neal C, Barry J & Michel C. (2001). Quasi-periodic substructure in the microvessel endothelial glycocalyx: a possible explanation for molecular filtering? *J Struct Biol* **136**, 239-255.
- Tarbell JM. (2010). Shear stress and the endothelial transport barrier. *Cardiovascular Research* **87**, 320-330.
- Tarbell JM & Ebong EE. (2008). The endothelial glycocalyx: a mechano-sensor and -transducer. *Sci Signal* **1**, pt8.
- Tarbell JM & Pahakis MY. (2006). Mechanotransduction and the glycocalyx. *Journal of Internal Medicine* **259**, 339-350.
- Tatsuzuki A, Ezaki T, Makino Y, Matsuda Y & Ohta H. (2009). Characterization of the sugar chain expression of normal term human placental villi using lectin histochemistry combined with immunohistochemistry. *Archives of histology and cytology* **72**, 35-49.
- Vargas FF, Osorio MH, Ryan US & De Jesus M. (1989). Surface charge of endothelial cells estimated from electrophoretic mobility. *Membrane biochemistry* **8**, 221-227.
- Varki A. (2008). Sialic acids in human health and disease. *Trends Mol Med* **14**, 351-360.
- Weinbaum S, Tarbell JM & Damiano ER. (2007). The Structure and Function of the Endothelial Glycocalyx Layer. *Annual Review of Biomedical Engineering* **9**, 121-167.
- Weinbaum S, Zhang XB, Han YF, Vink H & Cowin SC. (2003). Mechanotransduction and flow across the endothelial glycocalyx. *Proceedings of the National Academy of Sciences of the United States of America* **100**, 7988-7995.
- Yen W-Y, Cai B, Zeng M, Tarbell JM & Fu BM. (2012). Quantification of the endothelial surface glycocalyx on rat and mouse blood vessels. *Microvasc Res* **83**, 337-346.
- Zeng Y, Adamson RH, Curry FRE & Tarbell JM. (2013). Sphingosine-1-phosphate protects endothelial glycocalyx by inhibiting syndecan-1 shedding. *AJP: Heart and Circulatory Physiology* **306**, H363-H372.

FIGURE LEGENDS

Figure 1. Imaging and analysis of endothelial glycocalyx *in vivo*

A. Section of a z-stack imaged *in vivo*; when a measurement line was drawn across the width of a vessel, all available slices (blue arrows) were scanned through and the slice which yielded the widest vessel diameter (red arrow) was selected for measurements. *B.* Example of FITC-WGA (green) and R18 (red) imaged vessel in the mid-plane region. For demonstration purposes the intensity profile (yellow arrow) has only been drawn on one side of the vessel; this line was actually drawn across the entire width and therefore took measurements of both sides simultaneously. *C.* The intensity profile of both R18 and FITC-WGA along a line across the vessel wall (yellow arrow) was used to determine 4 parameters of glycocalyx depth; 1) the anatomical distance between peak signals from R18 and FITC-WGA labels (peak-to-peak: P-P) as a measure of depth, 2) the full width measured at the point of half maximal fluorescence intensity of FITC-WGA (FWHM), and 3) and the peak intensity of FITC-WGA (I_f). 4) fractional coverage of endothelial glycocalyx was calculated as the number of points with a peak-to-peak endothelial glycocalyx depth measurement >0 . *D.* A model of endothelial glycocalyx (green bar) was moved (white arrow) at 1nm intervals across an Airy disc representation of laser light (white circle). Scale bar: 100nm. *E.* the fluorescence intensity (I_f) of measurements across the green bar (green points) was highest when peak I_f was calculated by triangulation (interrupted straight blue lines, blue arrows), lowest from absolute values (green points and arrows), and intermediate when peak I_f was calculated from a Gaussian distributions (interrupted black curve, black arrows).

Figure 2. Paired imaging of solute permeability and endothelial glycocalyx in single microvessels

A. Two 26G needles (*n*) and two fine tubes (grey line) were inserted into each of the main barrels of the beveled theta style micropipette (TP) and glued in place to form a tight seal. Two syringe pumps (*sp*) were used to push solution into the fine tube which was connected to the pump by a refill line (*r*) and both sides filled with BSA-Ringer (or desired dye). The other end of the syringe pumps (*sp*) were connected to a waste line (*w*) that was positioned directly behind the back of the two needles (*n*) and would pull solution away (green arrows) as the refill line pushed solution into (black arrows) the pipette. The needles were also connected to a two separate water manometers; the right manometer (*rm*) and the left manometer (*lm*) to control pressure on each side of the pipette independently. This design allowed the solution in the pipette to be readily changed even during microvessel cannulation. **B.** Mesenteric microvessels of pentobarbitone-anaesthetized male Sprague Dawley rats were cannulated using theta style micropipettes where the pressure on either side was set so that only one desired side perfused (15-30cm of H₂O). Perfused BSA-Ringer was switched instantly to perfused Alexa 488 labelled BSA (0.03mg/ml) transiently for 30 to 60 seconds, and imaged using fluorescent microscopy **C.** A measuring window is drawn across the vessel and areas surrounding it and the change in mean fluorescence intensity (I_f) is plotted against time (*t*). Initial filling of the vessel with Alexa 488 labelled BSA causes a stepwise increase in I_f (ΔI_{f0}), followed by a steady linear increase in I_f , the initial rate of change of which ($[dI_f/dt]_0$) represents the rate of solute flux across the vessel wall **D.** Confocal image of cannulated mesenteric microvessel perfused and labelled with TMA-DPH (endothelial cell membrane: blue) and TRITC-WGA (sialic acids within endothelial glycocalyx: red). vl: vessel lumen. int: interstitium. White bar: selected line of interest across vessel wall. **E.** Fluorescence intensity profile along selected white bar. P-P (peak to peak): measure of anatomical distance between peak fluorescence of TMA-DPH (endothelial cell membrane: blue) and TRITC-WGA (sialic acids within endothelial glycocalyx: red) signals. FWHM: measure of Full Width Half Maximum of TRITC-WGA (sialic acids within endothelial glycocalyx: red) signal. Other previously described parameters were also analyzed (mean peak I_f of TRITC-WGA, and fractional coverage). **F** representative images of the same cannulated and perfused microvessel imaged using light (i), confocal (ii) and electron (iii) microscopy. (i) P: pipette. I: interstitium. VL: vessel lumen. (ii) red: endothelial cell membrane (R18). Green: endothelial glycocalyx (FITC-WGA). White box: portion of membrane also examined by electron microscopy. (iii) VL: vessel lumen. EG: endothelial glycocalyx. ECM: endothelial cell membrane. EC: endothelial cell. I: interstitium.

Figure 3. Endothelial glycocalyx depth in an individual vessel varies by more than an order of magnitude, according to the imaging and analysis method

*A. Microvessels were imaged immediately after perfusion with FITC-WGA (glycocalyx) and R18 (cell membrane). A line was drawn across the full diameter of the vessel and the depth of the endothelial glycocalyx estimated from: the Full Width measured at the point of Half Maximal fluorescence intensity of FITC-WGA (FWHM); and the anatomical distance between peak signal from R18 (cell membrane) and FITC-WGA (sialic acids within endothelial glycocalyx) (peak to peak). FWHM analysis generated significantly higher values of glycocalyx depth than peak to peak analysis (***p* < 0.001 paired t-test). B. The depth of the glycocalyx (peak-to-peak method) (y-axis) was inversely related to the peak fluorescence intensity (I_f) of FITC-WGA (x-axis) ($r = -0.50$, $p < 0.05$ Pearson's correlation). C. Full-Width Half Maximum (FWHM) measurements of endothelial glycocalyx depth made from confocal microscopy (CM) images were significantly greater than subsequent depth measurements of Alcian Blue-labelled endothelial glycocalyx imaged with electron microscopy (EM) in the same vessel (***P* < 0.001 paired t-test). D. Peak to peak measurements of endothelial glycocalyx depth from confocal microscopy (CM) images were also significantly greater than measurements of Alcian Blue-labelled endothelial glycocalyx depth measurements from electron microscopy (EM) in the same vessel (***p* < 0.001 paired t-test). E. Glycocalyx depth measurements made in TMA-DPH and TRITC-WGA-labelled vessels by the peak to peak method are significantly greater than peak to peak-determined endothelial glycocalyx depth measurements made in R18 and FITC-WGA-labelled vessels ($n = 6$) (***p* < 0.001 unpaired t-test). There is no significant difference between fractional glycocalyx cover (*F*) or peak WGA fluorescence intensity (I_f) (*G*) in TRITC-WGA-labelled vessels and FITC-WGA-labelled vessels (all ns, $p > 0.05$ unpaired t-test).*

Figure 4. Imaging and analysis of solute permeability *in vivo*

A. The mean fluorescence intensity of Alexa Fluor 488 conjugated BSA (I_f ; y-axis) was measured and quantified within a cannulated and perfused microvessel *in vivo*, and plotted against the concentration of Alexa Fluor 488 conjugated BSA being perfused (x-axis). The measured I_f is linearly related to the concentration of Alexa Fluor 488 conjugated BSA being perfused ($r^2 = 0.9916$, $p < 0.0001$ Pearson's correlation). **B.** An expanded plot of the lower range of I_f versus Alexa Fluor 488 conjugated BSA concentration data, demonstrating that this linear relation holds at the range of low concentrations of Alexa Fluor 488 conjugated BSA used in solute permeability experiments (0.03mg/mL) **C.** P_{sBSA} was calculated in the same perfused microvessel *in vivo* perfused with different concentrations of Alexa Fluor 488 conjugated BSA (BSA_{AF488}). There was no significant difference between the P_{sBSA} values calculated from the I_f for each of these perfusates (*ns*, $p = 0.9404$, one way ANOVA).

Figure 5. Disruption of sialic acids reduces endothelial glycocalyx depth and coverage

Endothelial glycocalyx parameters were determined in vessels with sialic acid disruption achieved by 20mins perfusion with 40mg/ml BSA supplemented with 2U/ml neuraminidase (filled triangles), or in control vessels perfused with 40mg/ml BSA vehicle alone (baseline: filled circles; vehicle perfusion; filled squares). Glycocalyx depth determined using the peak to peak method of analysis was no different before and after perfusion with vehicle (**A**), but was significantly reduced after neuraminidase perfusion (**B**) ($ns: p > 0.05$; $** p < 0.01$, two-way ANOVA with Bonferroni post-hoc analysis). This neuraminidase-induced reduction in peak-to-peak determined measurements of endothelial glycocalyx depth was reproduced in unpaired experiments (**C**) in which endothelial glycocalyx depth was determined once only, after earlier measurements of solute permeability in the same vessel during perfusion with either 40mg/ml BSA vehicle alone (filled squares) or 40mg/ml BSA supplemented with 2U/ml neuraminidase (filled triangles) ($*p < 0.05$, unpaired t -test). Likewise, glycocalyx depth determined with the Full Width Half Maximum (FWHM) method was unaltered by perfusion with vehicle solution (**D**), but was significantly reduced after neuraminidase perfusion (**E**) ($ns: p > 0.05$; $** p < 0.01$, two-way ANOVA with Bonferroni post-hoc analysis). However, in separate measurements in which endothelial glycocalyx depth was measured only once by the FWHM after initial solute permeability measurements during perfusion with either 40mg/ml BSA vehicle alone (filled squares) or 40mg/ml BSA supplemented with 2U/ml neuraminidase (filled triangles), no significant difference was determined ($ns, p > 0.05$, unpaired t -test) (**F**). Identical results (as for FWHM) were also obtained when determining the peak I_f of WGA-labelled endothelial glycocalyx in paired (**G,H**; $ns: p > 0.05$; $** p < 0.01$, two-way ANOVA with Bonferroni post-hoc analysis) and unpaired (**I**; $ns, p > 0.05$, unpaired t -test) experiments. The fractional coverage of the vessel wall with endothelial glycocalyx resolvable with the peak-to-peak method of analysis was no different before and after perfusion with either vehicle or neuraminidase (**J,K**; $ns: p > 0.05$, two-way ANOVA with Bonferroni post-hoc analysis), but a significant reduction was observed after neuraminidase perfusion in unpaired experiments (**L**; $*$, $p < 0.05$, unpaired t -test). Endothelial glycocalyx depth measured in electron micrographs was significantly lower in neuraminidase-perfused vessels, as compared with vehicle-perfused vessels ($*$, $p < 0.05$, unpaired t -test) (**M**). There was a significant positive correlation between the depth of endothelial glycocalyx determined in electron microscopy (EM) images with the depth of endothelial glycocalyx determined by the peak-to-peak analysis method in confocal microscopy (CM) images in the same vessel (**N**; $r = 0.75$, $p < 0.05$ Pearson correlation).

Figure 6. Disruption of sialic acids increases microvascular permeability to water and albumin

A. Apparent solute permeability to albumin (P_{sBSA}) was measured in microvessels before (baseline) and 20-25min after (treatment) perfusion with either vehicle (filled bars) or neuraminidase (open bars). Sialic acid disruption with neuraminidase perfusion significantly increased P_{sBSA} (*, $p < 0.05$, two-way ANOVA post hoc Bonferroni analysis), with no significant change in P_{sBSA} in vehicle-perfused control vessels (ns, $p > 0.05$, two-way ANOVA post hoc Bonferroni analysis). **B.** P_{sBSA} increased progressively over time during neuraminidase perfusion (filled triangles), but remained unaltered during vehicle perfusion (filled squares). A significant increase in P_{sBSA} was noted after 15-20 minutes treatment with neuraminidase, matching the timecourse of neuraminidase-induced endothelial glycocalyx disruption (***, $p < 0.001$, two-way ANOVA, Bonferroni post-hoc analysis). A significant inverse correlation was noted between P_{sBSA} and fractional coverage by resolvable endothelial glycocalyx determined with the peak-to-peak method (**C**) ($r = -0.73$, $p < 0.05$ Pearson correlation). A significant relation between P_{sBSA} and endothelial glycocalyx depth determined with the peak-to-peak method was best described by a single one phase decay curve with a relationship of $\text{depth} = 330\text{nm} + 607\text{nm} \times e^{-0.38 \times P_s}$ (**D**). Microvessel hydraulic conductivity (L_P) was significantly increased after sialic acid disruption with 20-25min perfusion with neuraminidase (filled triangles) compared with baseline measurements in the same vessel (filled circles) (*, $p < 0.05$, Wilcoxon) (**E**). Microvessel reflection coefficient to albumin was significantly reduced after sialic acid disruption with 20-25min perfusion with neuraminidase (filled triangles) compared with baseline measurements in the same vessel (filled circles) (*, $p < 0.05$, Wilcoxon) (**F**). There was a significant increase in true diffusive solute permeability to albumin after sialic acid disruption with neuraminidase (*, $p < 0.001$, unpaired t-test) (**G**).

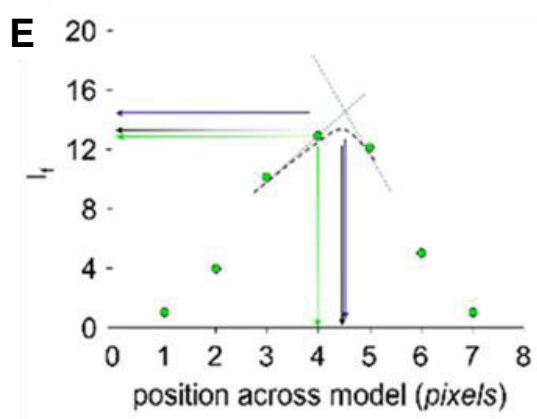
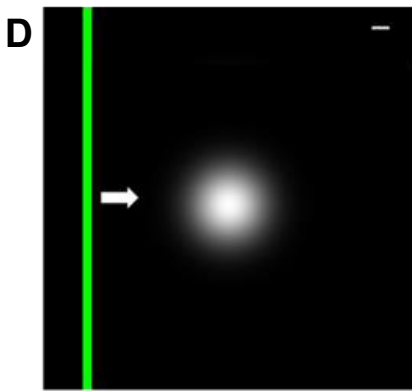
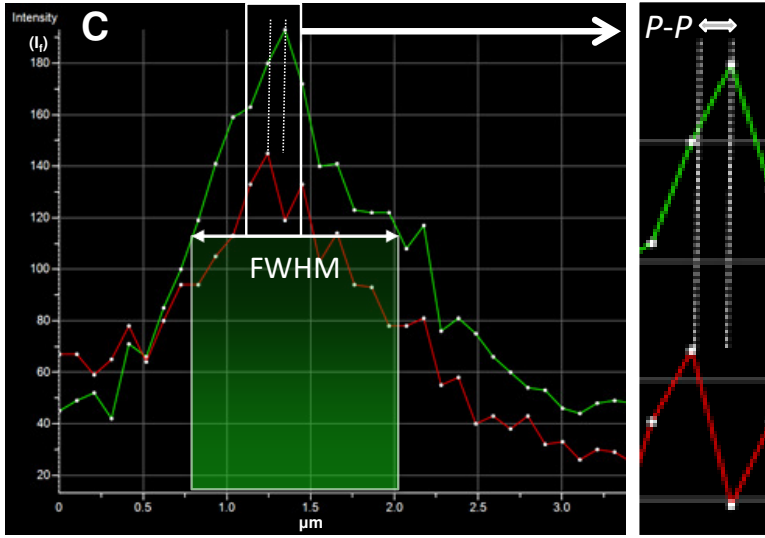
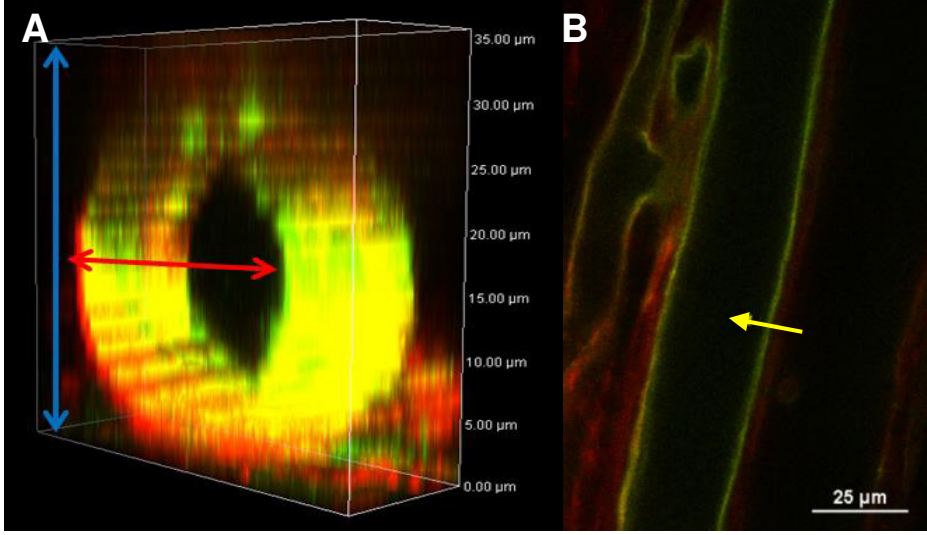
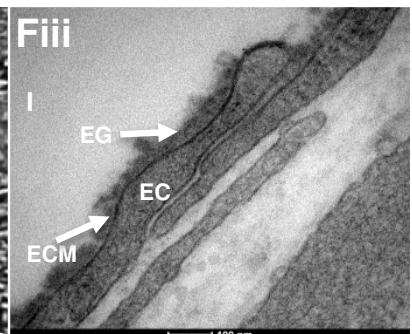
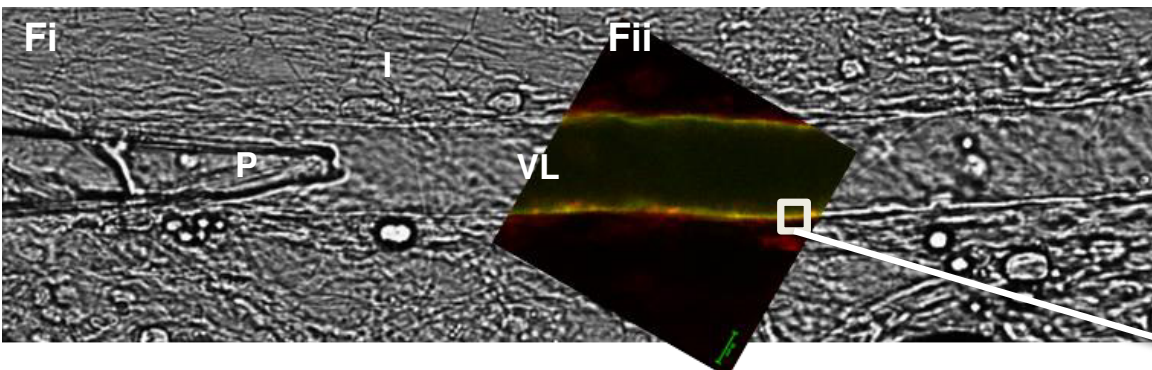
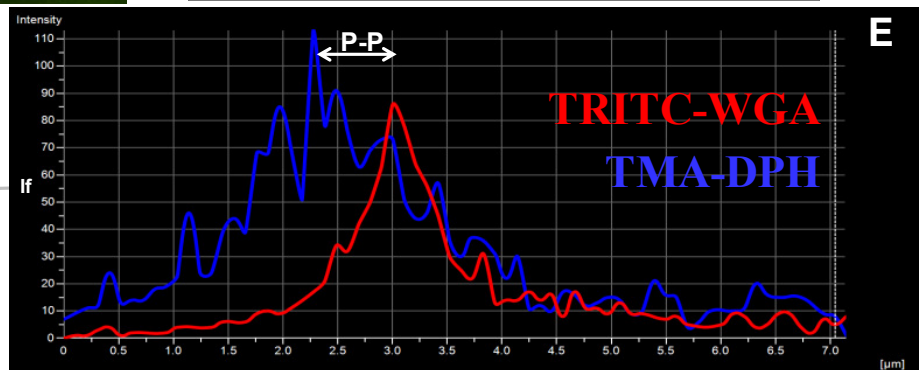
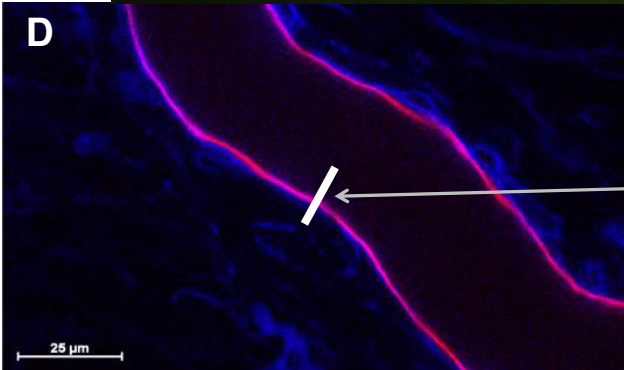
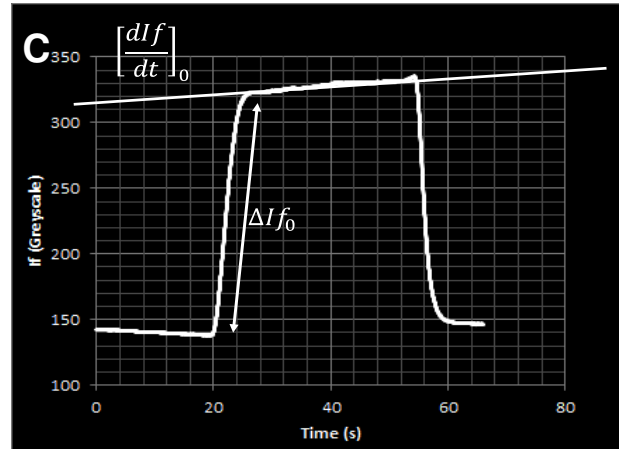
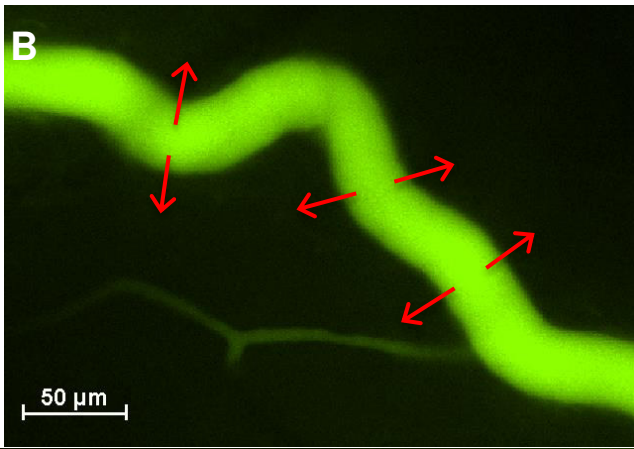
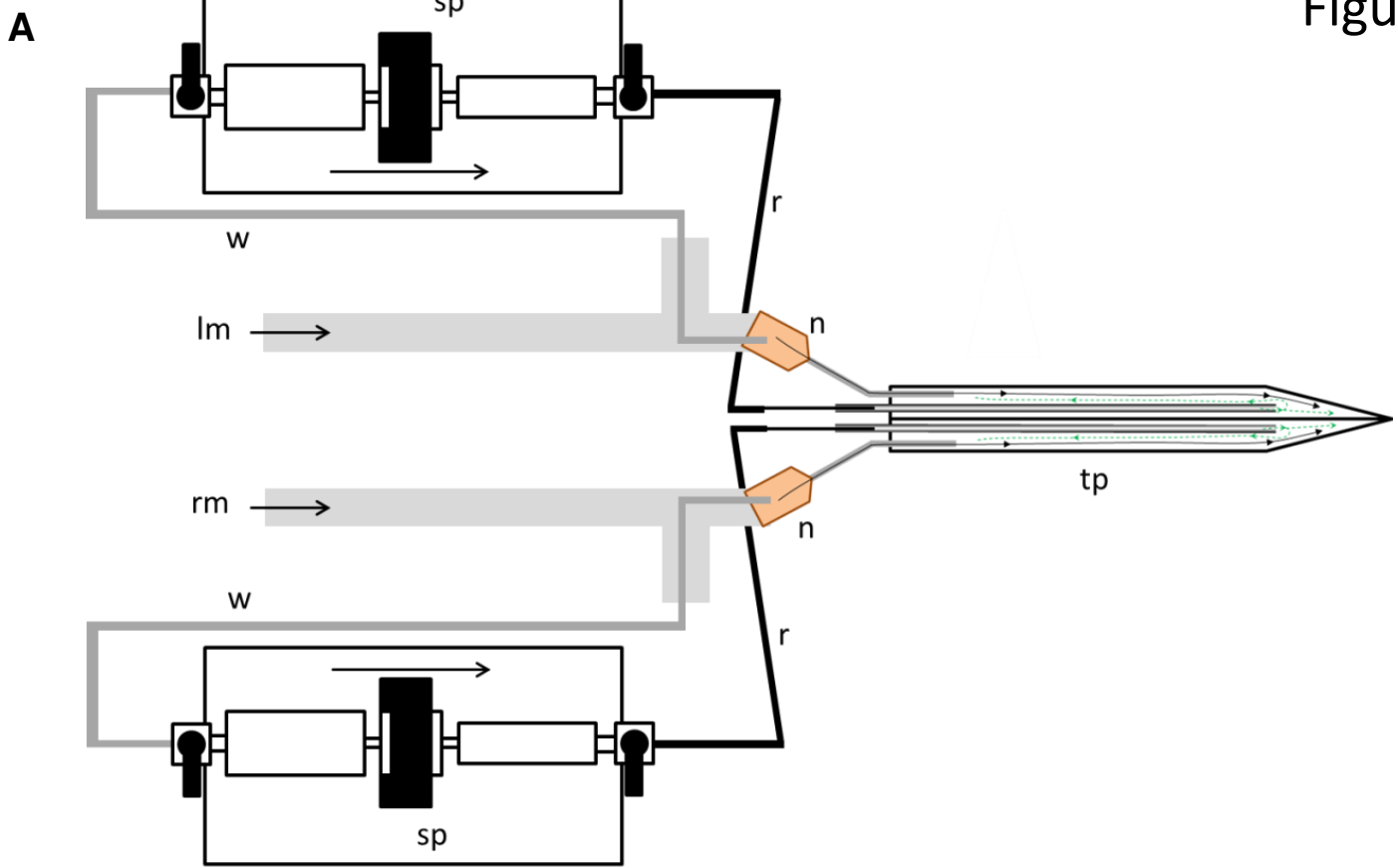


Figure 1



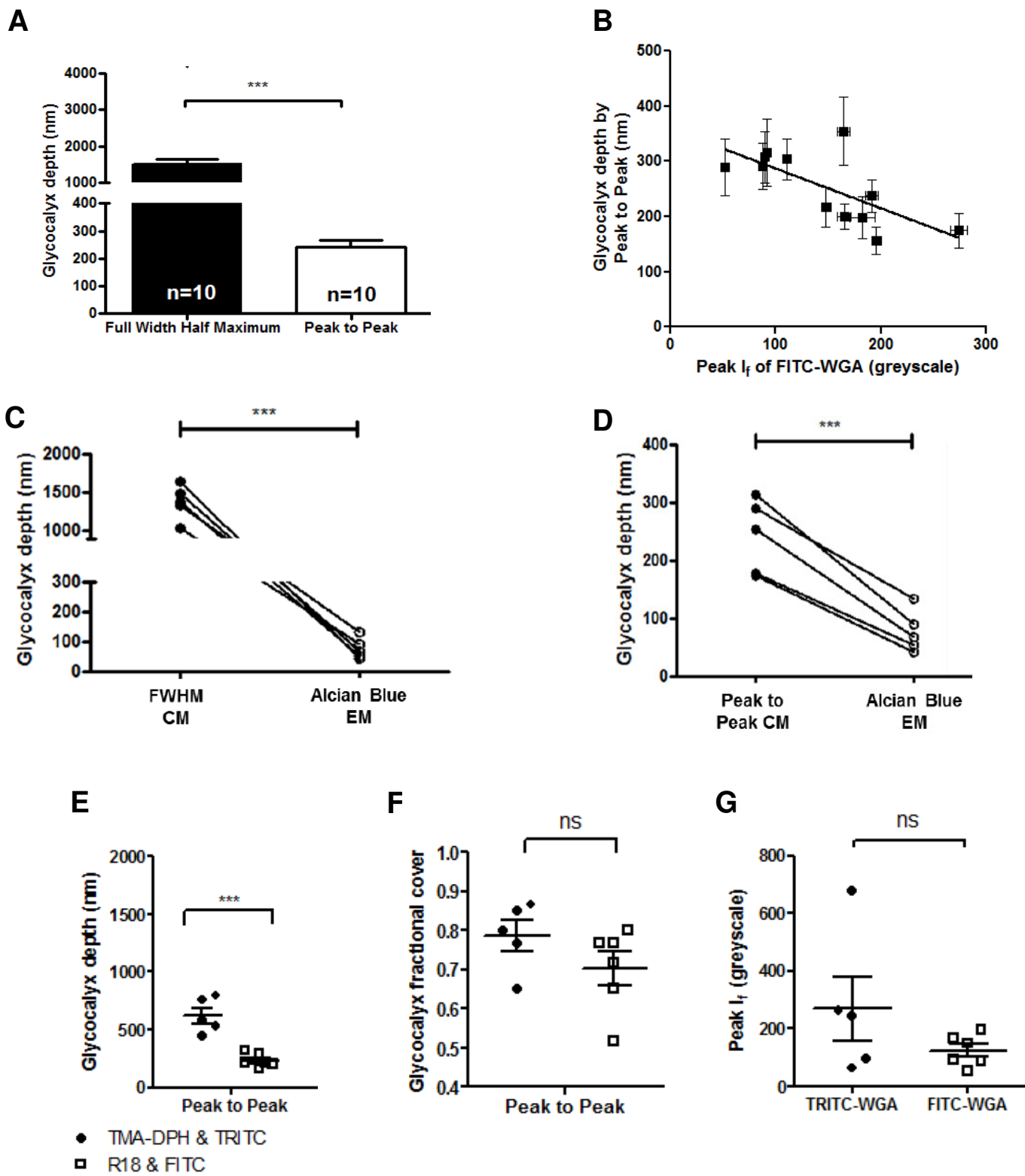


Figure 3

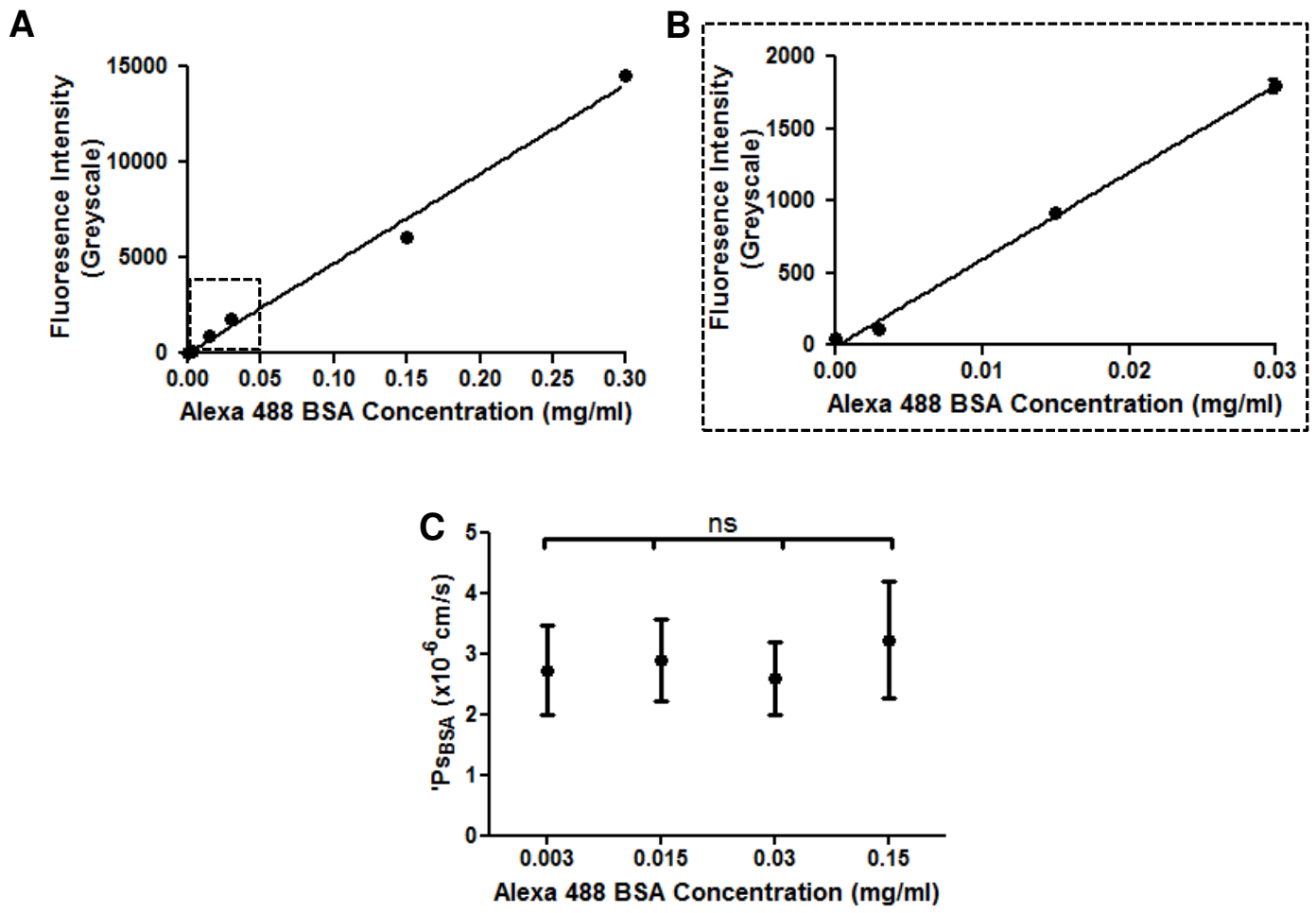


Figure 4

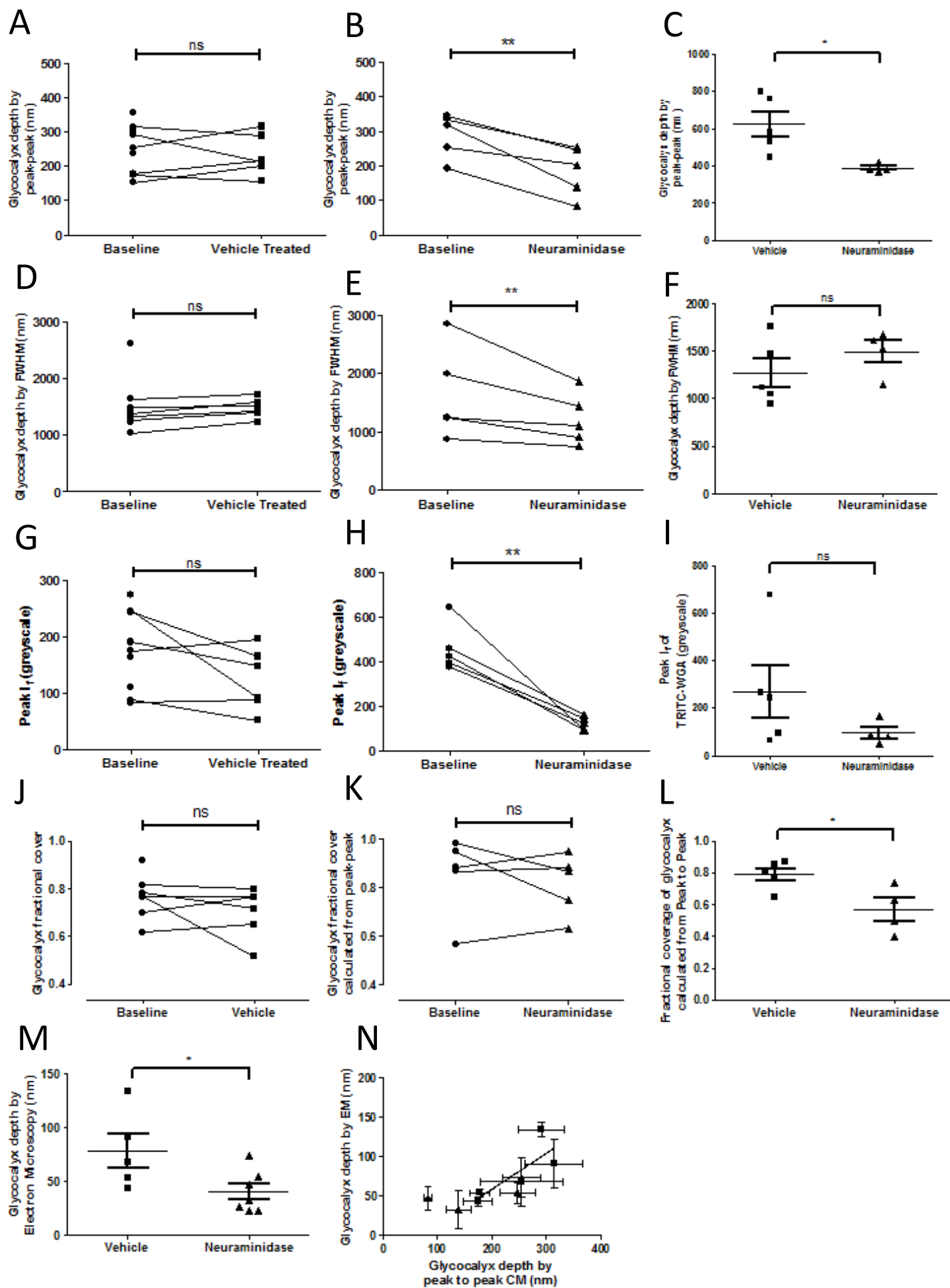


Figure 5

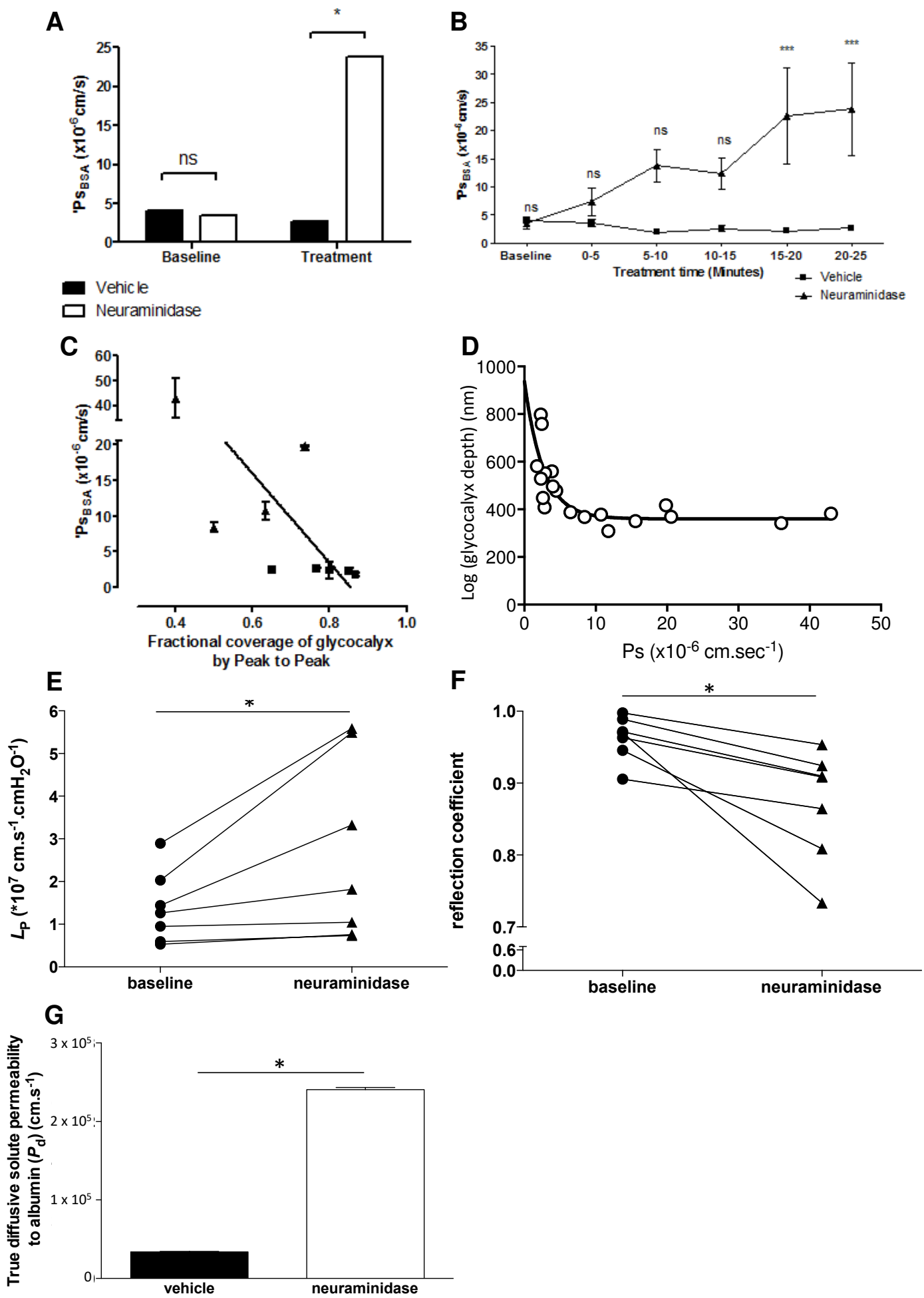


Figure 6