

STUDY PROTOCOL

Open Access



A psychologically informed, audiologist-delivered, manualised intervention for tinnitus: protocol for a randomised controlled feasibility trial (Tin Man study)

John A. Taylor^{1,2*}, Deborah A. Hall^{1,2}, Dawn-Marie Walker³, Mary McMurrin⁴, Amanda Casey⁵, David Stockdale⁶, Debbie Featherstone⁷, Dean M. Thompson^{1,2}, Carol MacDonald⁸ and Derek J. Hoare^{1,2}

Abstract

Background: Chronic tinnitus is a common incurable condition often associated with depression, anxiety, insomnia and reduced quality of life. Within National Health Service (NHS) audiology in the United Kingdom (UK), no standard protocol currently exists for the treatment of tinnitus. Counselling is only available in less than half of audiology departments, and there is no agreed standard for what constitutes tinnitus counselling. There is substantial evidence from systematic reviews for the clinical benefit of cognitive behaviour therapy (CBT) for tinnitus delivered by clinical psychologists or psychiatrists, but no studies have sufficiently evidenced the NHS model of tinnitus care where management is increasingly being delivered by audiology professionals. In a pilot randomised controlled trial (RCT), this study aims to evaluate the feasibility of comparing a psychologically informed guidance manual developed to support audiologist management of tinnitus with usual treatment.

Methods/design: Phase 1 consisted of three development stages: (1) a scoping review to generate a comprehensive set of tinnitus counselling components, (2) a Delphi survey involving expert patients ($n = 18$) and clinicians ($n = 21$) to establish consensus on the essential core attributes of tinnitus counselling, and (3) incorporation of these elements into a manualised care protocol. In phase 2, following training in a dedicated workshop, the manualised intervention will be delivered by three experienced audiologists across three different sites. Patients ($n = 30$) will be randomly allocated to receive either (1) psychologically informed management from an audiologist trained to deliver the manualised intervention or (2) treatment as usual (TAU) from an audiologist who has not received this training. Quantitative outcome measures will be administered at baseline, discharge and 6-month follow-up. Qualitative interviews with participating patients and clinicians will be conducted to gather perspectives on the feasibility and acceptability of the manualised intervention.

Discussion: The feasibility of proceeding to a definitive RCT will be assessed via compliance with the manual, willingness to be randomised, number of eligible participants, rate of recruitment, retention and collection of quantitative outcome measures. This research offers an important first step to an evidence-based, standardised and accessible approach to tinnitus care.

Trial registration: ISRCTN13059163. Date of registration: 6 May 2016

Keywords: Tinnitus, Audiology, Psychological intervention, Randomised controlled trial (RCT), Manual

* Correspondence: john.a.taylor@nottingham.ac.uk

¹National Institute for Health Research (NIHR) Nottingham Biomedical Research Centre, Ropewalk House, 113 The Ropewalk, Nottingham NG1 5DU, UK

²Otology and Hearing Group, Division of Clinical Neuroscience, School of Medicine, University of Nottingham, Nottingham NG7 2UH, UK

Full list of author information is available at the end of the article

Background

Chronic tinnitus is a common incurable condition where sound is perceived in the absence of acoustic stimulation. It affects about 10% of people in the United Kingdom (UK) [1] and is often associated with insomnia and hearing difficulty [2] and psychological problems such as depression and anxiety [3]. Within National Health Service (NHS) audiology, tinnitus is treated using a number of recommended interventions [4], but no standard protocol exists. As such, practices vary; sound therapy and patient education are widely available, but psychological interventions are only available in less than half of audiology departments [5].

A recent model of tinnitus posits that negative automatic thoughts and safety behaviours maintain tinnitus-related distress and that psychological interventions should be directed at reducing or removing these [6]. The benefit of cognitive behaviour therapy (CBT) delivered by clinical psychologists or psychiatrists is recognised [7–9], but there is no evidence for the effects of psychological interventions when delivered by audiologists [9]. Now that specialist tinnitus care is increasingly becoming the domain of audiologists due to the attrition of hearing therapists and the dearth of clinical psychologists in the UK, their delivery of a psychologically informed treatment represents a potentially cost-effective and highly accessible route to improving tinnitus patient care within the NHS. In their review of psychological interventions amongst tinnitus sufferers, Wan Suhailah and colleagues [10] concluded that, due to the shortage of clinical psychologists, a simplified version of psychological intervention implementable by other clinicians should be developed to treat tinnitus. The Department of Health [4] also posit that audiologists should be able to provide psychological therapies where required. Furthermore, the effectiveness of audiologist-delivered CBT was one of the top 10 priority questions identified by clinicians and patients in the recent James Lind Alliance Tinnitus Priority Setting Partnership [11]. However, specialist audiological counselling skills are not a core requirement of the current audiologist training pathway in the UK, and in a survey, only 15% of audiologists in England considered themselves specialists in tinnitus care provision [5]. Although there is an appetite amongst audiologists to undertake further training in psychological therapies, the training is not standardised [12], nor has it undergone any formal evaluation. Thus, many audiologists have concerns about what degree of training is appropriate in order to formally ‘counsel’ [13]. This study represents a first step towards providing an evidence-base to support inclusion of psychological support for tinnitus into routine audiologist practice. In accordance with Medical Research Council (MRC) recommendations for developing and evaluating complex

interventions [14], a phased approach to this study has been adopted, incorporating a development phase and an intervention phase.

The specific aims are:

1. To develop a treatment manual for a trained audiologist to use when providing psychological support for people with tinnitus
2. To conduct a feasibility trial to establish whether this manualised tinnitus treatment including core counselling elements versus treatment as usual (TAU) can be evaluated at the level of a large scale RCT
3. To conduct qualitative interviews with participating patients and audiologists to gather perspectives on the feasibility and acceptability of the manualised intervention

Method

Phase 1: development phase

This phase consisted of three stages:

1. *Scoping review*: components of psychological therapies for tinnitus were identified via a comprehensive scoping review of trials registers and academic databases of published literature, and editorials, conference abstracts and dissertations in the grey literature. A set of psychological therapy components were generated that underwent thematic analysis and were grouped across 25 themes [15].
2. *Delphi survey*: the set of psychological therapy components formed the basis of an online 3-round Delphi survey (Thompson et al., in preparation). The Delphi process is commonly used to develop consensus amongst experts when defining new interventions in health service research [16] and has been recognised as an appropriate method for this purpose [17]. The survey panel comprised patients ($n = 18$) who had experienced tinnitus counselling or psychological therapy and clinicians ($n = 21$) who had delivered counselling or psychological therapy for people with tinnitus, to establish consensus on the components of psychological therapy that audiologists could and should deliver in tinnitus management. Novel components elicited from the open-ended question in the first round were added to those generated from the scoping review. These 160 components were then rated in two subsequent rounds, where individual panellists were invited to reconsider their initial decisions in the light of overall levels of agreement across panellists. Consensus for inclusion or exclusion was taken as 80% or more of all panellists rating the component at points 6–7 or 1–2 on the scale, respectively. Consensus on the importance and relevance of 76

components was reached. For the remaining 84 components, consensus was not reached.

3. *Manualised protocol*: this stage comprised manualising the core components identified in the Delphi survey for testing in a feasibility trial as a specialised psychologically informed intervention delivered by audiologists. In order to describe and standardise the intervention, this stage commenced with a full day reference group meeting involving steering group and study team members to decide on which components to include and how to incorporate them into a psychologically informed manualised care protocol. It was agreed in this meeting that a working framework for the manual would comprise the following sections: rationale, assessment, education, treatment planning/goal setting, management/self-management and relapse prevention. All 76 components for which consensus for inclusion was reached were first considered for allocation under these headings. This was followed by considering whether any of the 84 components for which consensus was not reached should be included and if so, under which headings they would be written into the manual. Decisions were based on level of agreement from the Delphi survey, whether components had a good evidence-base, theoretical cohesiveness and what could realistically be included in a short, low intensity intervention delivered by audiologists, on the basis of resource limitations and time-limited training. Individual members of the team (including patient representatives, audiologist, hearing therapist, cognitive behaviour therapist and researchers) worked to develop specific sections of the manual in accordance with their areas of expertise and taking note of research into what makes a good treatment manual [18]. Finally, the manual was reviewed and amended to reflect a 'whole' in terms of style, coherence and theory.

Phase 2: intervention phase

Feasibility trial design

The design is a non-blinded, multicentre, randomised controlled feasibility trial of psychologically informed treatment from an audiologist who has received training in the use of the manual, versus TAU from an audiologist who has not, for people with tinnitus (Fig. 1).

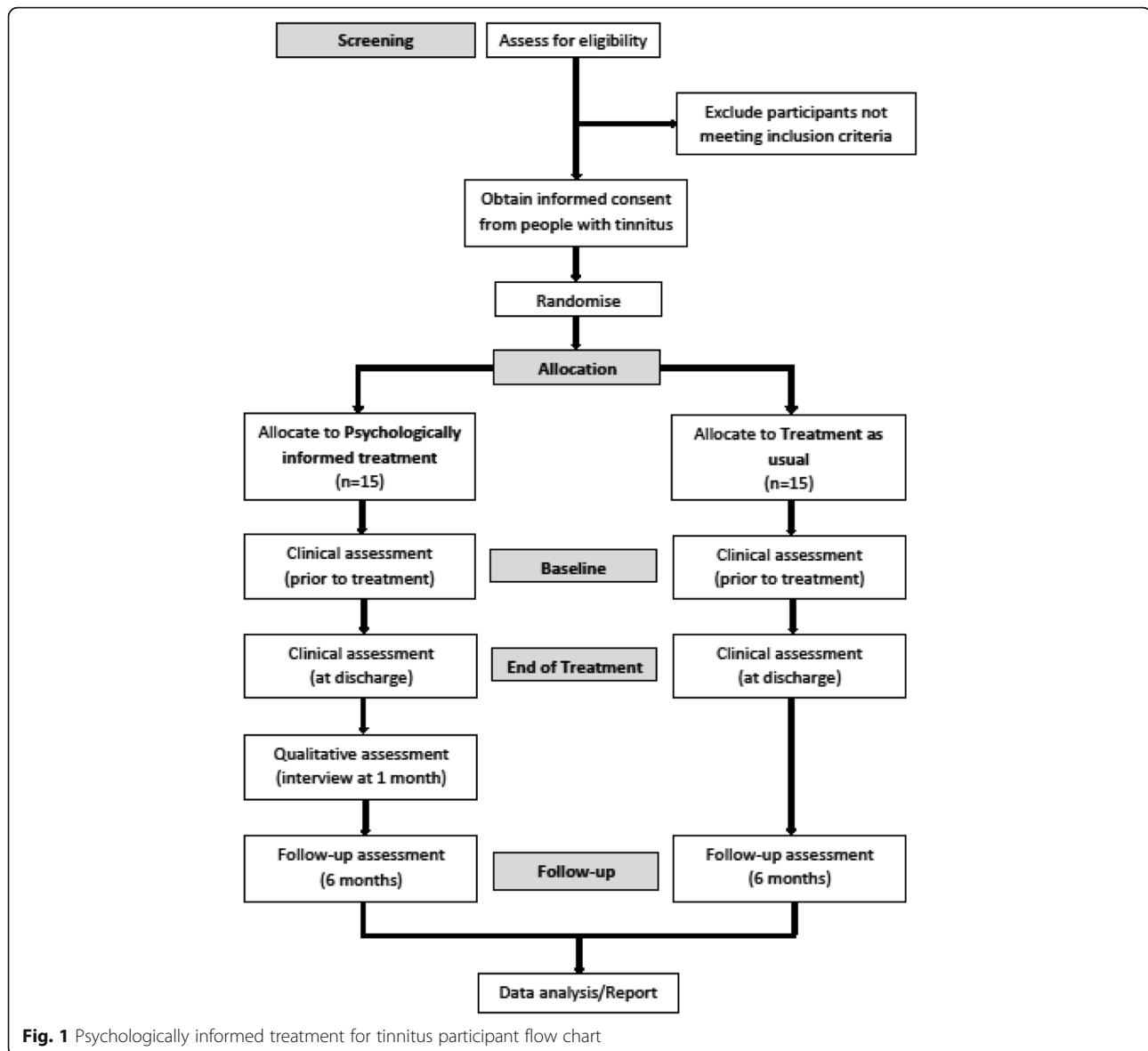
Participants

Thirty participants referred by a general practitioner (GP) or an ear, nose and throat (ENT) specialist for tinnitus management will be recruited. Recruitment will be across three NHS audiology departments which provide tinnitus services in Nottingham University Hospitals NHS Trust, Derby Teaching Hospitals NHS

Foundation Trust and Sherwood Forest Hospitals NHS Foundation Trust. GP referral sample size was calculated to estimate critical parameters such as recruitment rate and acceptability of randomisation and different outcome measures. Following consultation with six clinical sites, it was estimated that, in general, recruitment of two participants per month per site was readily achievable. The sample size was therefore predicted rather than actual as it was determined by forecast, the number of sites and the timeframe of the project. It is not necessarily limited to the inclusion of just two participants per site per month. A predicted recruitment rate does however test the feasibility and likely timeframe of conducting a fully powered, multi-centre RCT. Furthermore, in order to estimate standard deviation, which can be used as part of a sample size calculation for an explanatory RCT, two authoritative papers taken together put the recommended estimated feasibility trial sample size in between 24 and 50 [19, 20].

Inclusion criteria For inclusion in the feasibility trial, patients must reflect the typical population that might be expected to take part in a phase 2 clinical trial. The typical population includes adults aged 18 and over, comprises more males than females, shows a trend towards increasing age to a peak of between 60 and 69 years [21] and a bias towards people of higher deprivation/level of education [22]. The sample is also likely to contain a proportion of people who suffer from comorbid mental health conditions, e.g. anxiety and depression, and medical conditions, e.g. hypertension and diabetes mellitus [21]. The majority are also likely to have some degree of hearing loss [22]. Participants will be required to demonstrate the intellectual/cognitive capacity to provide informed consent and have sufficient mobility to attend clinics. No exclusions will be made on the basis of previous experience with psychological services. All patients will be enrolled at or before their first visit to audiology and have a primary complaint of tinnitus. Patients will also be required to present with a clinically relevant need, determined by a questionnaire score of >24 on the Tinnitus Functional Index (TFI) [23] indicating that tinnitus is at least a moderate problem. Offering this intervention to patients without such a clinically relevant need may be considered unnecessary treatment. All participants must be willing to complete questionnaires and to take part in follow-up semi-structured interviews about their experiences of taking part in the study.

Exclusion criteria For the feasibility trial patients whose symptom of tinnitus is actually of a medically treatable origin (i.e. not chronic subjective tinnitus, but objective



tinnitus for instance, where the noise can be detected by a third party) will be excluded. Also excluded will be patients who are unable to communicate in English and those participating in other research in tinnitus management at any time from consenting to their participation. Finally, patients who have comorbid conditions (e.g. psychotic disorders or dementia) which render them unable to give informed consent will be excluded. No exclusions will be made specifically on the basis of any medications patients may be taking.

Ethical considerations

Ethical approval was granted by North West – Preston Research Ethics Committee (reference 16/NM/0047). Informed consent will be sought from participants in

accordance with Good Clinical Practice (GCP) after thorough information about the study is provided by the researcher or site principal investigator (PI). The PI at each site will have responsibility for reporting of adverse events (AEs) to the chief investigator (CI) who will then inform the Research and Innovation Manager and Trust Governance Manager as required. Local policies and procedures at the three sites will be followed for reporting and investigating such incidents.

Randomisation

Participants will be 1:1 randomised using the randomisation function in Microsoft Excel. First participants will be assigned a number between 1 and 10 for each of the three sites, according to chronological order of recruitment. For each site, these numbers will be given another

random number using the Excel randomisation function and the participants 1 to 10 for each site will be ordered according to their associated randomly generated number. Those with the greatest five random numbers per site will be allocated to TAU. This process will be completed by telephoning a member of the research unit not involved in the trial after the participant has been screened as eligible and provided informed consent.

Interventions

Psychologically informed treatment plus TAU: the intended purpose of the manual is to provide audiologists with a resource to support their work with people who have tinnitus in a psychologically informed therapeutic alliance to identify individual needs, set joint goals, reach shared and informed decisions and promote patient self-management. It is designed to go beyond the directive education and advice that might be considered TAU. Based on estimates from current practice, patients will participate in approximately five sessions, each lasting 1 h on average, delivered by an audiologist who attended a two-day training workshop on the manual.

The manual is divided into nine sections (Table 1). Section 1 provides the background and overview of the manual, including the processes and skills for developing a relationship with the patient. Section 2 involves assessment through a standardised interview, where the aim is for individual patient needs to be identified and a therapeutic alliance to begin. The rationale for psychologically informed treatment will then be discussed (section 3) prior to collaborative goal setting and treatment planning (section 4). Based on individual need, the audiologist and patient will work on relevant areas of tinnitus education (section 5) and management/self-management strategies (section 6). These include managing the emotional consequences of tinnitus, rapid relaxation, managing fear and avoidance behaviours, changing unhelpful thoughts and beliefs, promoting physical exercise, promoting good sleeping habits, attention, monitoring and acceptance, and sound therapy (enrichment). The treatment concludes with a focus on relapse prevention (section 7). Section 8 is a bibliography containing references related to the intervention and further reading for the audiologist or patient. The appendices (section 9) contain materials used for training in the manual. Audiologists will be guided on appropriate treatment areas to cover and resources to use from an accompanying 'toolkit' (Table 2). They will receive periodic peer supervision and from the manual trainers.

Treatment as usual (TAU): patients will be assessed and managed by an audiologist who has not received training in psychological therapy and has not received

Table 1 Psychologically informed treatment for tinnitus manual contents

1. Introduction
1.1. Background
1.2. Overview of manual
2. Patient assessment
3. Rationale for psychologically informed treatment
4. Goal setting/treatment planning
5. Patient education
6. Patient management/self-management
6.1. Managing the emotional consequences of tinnitus
6.2. Rapid relaxation
6.3. Managing fear and avoidance behaviours
6.4. Changing unhelpful (negative) thoughts and beliefs
6.5. Promoting physical exercise
6.6. Promoting good sleeping habits
6.7. Attention, monitoring and acceptance
6.8. Sound therapy (enrichment)
7. Relapse prevention
8. Bibliography
9. Appendices
A1. Communication in rehabilitation
A2. The relational skills model—setting up the relationship
A3. The relational skills model—developing the relationship
A4. The relational skills model—working with the relationship
A5. The relational skills model—the established relationship
A6. Providing explanations
A7. Teach-back technique

training in the psychologically informed treatment for tinnitus. Based on routine clinical practice, this is likely to include management of tinnitus education and advice over approximately three sessions, each lasting 1 h on average.

Outcome measures

Feasibility of a full-scale randomised controlled trial is the essential outcome of the feasibility trial. Feasibility for this would be confirmed if the feasibility trial demonstrates (1) a conservative recruitment rate of 10% of all eligible patients, i.e. screening 10 or fewer patients to gain a single recruit, (2) recruitment of 65% of target participants, i.e. recruiting 20 of the target number of 30, (3) retention of 80% of participants with an equivalent proportion of outcome data collected, and (4) continued patient and clinician compliance to the manualised tinnitus counselling.

Outcomes for the feasibility trial include completeness of a set of validated questionnaires. These reflect typical

Table 2 Psychologically informed treatment for tinnitus toolkit

T1 Tinnitus functional index (and scoring rubric)
T2 Tinnitus case history questionnaire
T3 Formulation worksheet (for sections 2 and 6.3)
T4 BTA leaflet all about tinnitus ver.1.4
T5 Cognitive model of tinnitus psychology tool
T6 Stages of change model
T7 Goal setting sheet
T8 Action planning sheet
T9 Goal setting and action planning practice framework
T10 What keeps tinnitus going psychology tool
T11 What causes tinnitus psychology tool
T12 Meaning in tinnitus psychology tool
T13 BTA leaflet tinnitus and stress ver.1.4
T14 Relaxation training diary
T15 Fear and avoidance example formulation
T16 Exposure worksheet
T17 Negative thinking example formulation
T18 Unhelpful thinking styles sheet
T19 Thought record—blank copy
T20 Thought record—example copy
T21 Physical exercise example formulation
T22 Physical exercise diary
T23 Sleep cycles sheet
T24 Sleep diary
T25 BTA leaflet taming tinnitus ver.1.3
T26 Acceptance in metaphors sheet
T27 Mindfulness: three simple ways to get present sheet
T28 My 'managing tinnitus' blueprint: making a plan for well-being

components of an RCT test battery in tinnitus and are considered most likely to capture the anticipated therapeutic benefits of the intervention:

1. Tinnitus Functional Index (TFI) [23] to measure the severity and impact of tinnitus
2. Tinnitus Cognitions Questionnaire (TCQ) [24] to assess positive and negative cognitions associated with tinnitus
3. Clinical Outcomes in Routine Evaluation - Outcome Measure (CORE-OM) [25] to assess general well-being
4. Health Utilities Index (HUI) 15Q [26] to assess health-related quality of life and cost-utility
5. Working Alliance Inventory (WAI) [27] to measure the quality of the therapeutic alliance (patient and clinician versions)
6. Section 4 of the Client Service Receipt Inventory (CSRI) [28] to measure the use of health and social care

The participant will complete the baseline study questionnaires in advance of their first audiology appointment and again immediately at the end of treatment (excluding the CSRI which is only completed at follow-up). To determine a candidate primary outcome measure of long-term impact, the questionnaires (including the CSRI) will be administered again via post at 6-month follow-up. One telephone or email reminder to complete the follow-up questionnaires will be used if the questionnaires have not been returned within 2 weeks.

Qualitative interviews and focus groups

Clinicians delivering the manualised treatment and patients receiving it will be invited to partake in semi-structured interviews of approximately 1 h to discuss their experiences of the intervention and for treatment fidelity to be explored. Patient interviews will be carried out 4 weeks following their last appointment to capture continued compliance with treatment techniques whilst not compromising recall. Clinician interviews will be conducted after discharge of their final patient. The interviews will be audio-recorded and conducted by authors, JAT and DMT, transcribed and analysed using a thematic analysis approach [29]. Initial analysis of the qualitative data will be conducted by JAT and the study team, including members of the NIHR Nottingham Biomedical Research Centre Patient and Public Involvement (PPI) panel. Emerging themes will be discussed in two focus groups with (i) audiologists and (ii) patients, to ensure that the themes and any identified barriers and facilitators to treatment implementation and maintenance of self-management are accurately representative of patient and audiologist experience. The purpose of this outcome is to identify which components of the manualised care worked well, why and which elements were not useful. It is important to establish what was successful and unsuccessful since the intervention development started with patient and clinician opinion of what is important rather than based on which components of treatment are better than others.

Statistical analysis

The feasibility trial will not include any hypothesis testing since its primary purpose is to determine whether a full-scale trial can be conducted. Descriptive statistics will be used to confirm (1) the number of eligible participants at each site (participating sites will routinely administer the TFI questionnaire to all patients presenting with a primary complaint of tinnitus), (2) willingness of patients to take part in a trial and be randomised (number of eligible participants willing to participate), (3) number of eligible participants recruited per month, (4) number of participants retained at discharge and

follow-up, and (5) percentage completion rate of questionnaire outcome measures, including questions unsuccessfully and incorrectly completed.

Descriptive statistics, including standardised mean averages, standard deviation (SD), standard error and confidence intervals, will also be used to compare the evaluative and discriminative properties of the tinnitus specific outcome measures. This will provide data on a potentially best single measure to use, should this work proceed to an explanatory RCT. Responsiveness to change of the tinnitus questionnaires used will be compared by assessing change to standardised mean scores across assessment time points within patient groups that reported an improvement, worsening or no change in their tinnitus-related health.

Discussion

Within NHS audiology, there is no standard protocol for the treatment of tinnitus. Although, research evidence highlights the benefit of CBT for tinnitus when delivered by psychologists or psychiatrists [7–9], psychological interventions are only available in fewer than half of audiology departments [5]. Furthermore, evidence for the effects of such treatments when delivered by audiologists is lacking [9].

With specialist tinnitus care becoming the domain of audiologists, a psychologically informed treatment is potentially an efficient, more effective means of their delivery of tinnitus care within the NHS. However, specialist audiological counselling skills are not currently integrated as a core requirement into the audiologist training pathway in the UK. Due to the lack of standardisation and evaluation of audiologist training in psychological therapies [12], many audiologists have concerns about their competence in this area [5, 13].

This feasibility trial will determine whether the manualised psychologically informed treatment developed for this study is appropriate, acceptable and practicable to patients and audiologists, and feasible to test in an exploratory trial. The feasibility trial will be used to inform any important changes to the care manual and inform the design of a trial to test its effectiveness. The aim of this study is to provide a platform for an integrated tinnitus counselling component as part of audiologist training as a first step towards inclusion of psychological support for tinnitus in routine audiologist practice.

Abbreviations

AE: Adverse event; BTA: British Tinnitus Association; CBT: Cognitive behaviour therapy; CI: Chief investigator; CORE-OM: Clinical Outcomes in Routine Evaluation - Outcome Measure; CSRI: Client Service Receipt Inventory; ENT: Ear, nose and throat; GCP: Good clinical practice; GP: General practitioner; HUI: Health utilities index; MRC: Medical Research Council; NHS: National Health Service; PI: Principal investigator; PPI: Patient and public involvement; RCT: Randomised controlled trial; SD: Standard deviation; TAU: Treatment as

usual; TCQ: Tinnitus Cognitions Questionnaire; TFI: Tinnitus Functional Index; UK: United Kingdom; WAI: Working Alliance Inventory

Acknowledgements

Nottingham University Hospitals NHS Trust is the sponsor for this trial. Richard Nicholson, Michelle Booth and Tendai Ngwerume are PIs at the three trial sites. Debra Williams and Hannah Heath from the patient steering group contributed to the manual development.

Funding

This article presents independent research funded by the National Institute for Health Research (NIHR) under its Research for Patient Benefit (RfPB) Programme (grant reference number PB-PG-0613-31106). The views expressed are those of the author(s) and not necessarily those of the NHS, the NIHR or the Department of Health. The grant holders are DJH (CI) and co-applicants, DAH, DS, DMW, MM, DF and AC. JAT, DMT and CM are co-investigators.

Availability of data and materials

Not applicable.

Authors' contributions

DJH and DAH conceived the study. DJH, DAH, DS, DMW, MM, DF and AC designed the study. JAT drafted the protocol manuscript. All authors contributed to the manual development and read and approved the final manuscript.

Competing interests

The authors declare that they have no competing interests.

Consent for publication

Not applicable.

Ethics approval and consent to participate

Ethical approval was granted by North West – Preston Research Ethics Committee (reference 16/NM/0047). Informed consent will be sought from participants in accordance with Good Clinical Practice (GCP).

Trial status

Recruitment to the feasibility trial commenced in September 2016

Publisher's Note

Springer Nature remains neutral with regard to jurisdictional claims in published maps and institutional affiliations.

Author details

¹National Institute for Health Research (NIHR) Nottingham Biomedical Research Centre, Ropewalk House, 113 The Ropewalk, Nottingham NG1 5DU, UK. ²Otology and Hearing Group, Division of Clinical Neuroscience, School of Medicine, University of Nottingham, Nottingham NG7 2UH, UK. ³Health Sciences, University of Southampton, Southampton SO17 1BJ, UK. ⁴Division of Psychiatry and Applied Psychology, School of Medicine, University of Nottingham, Nottingham NG7 2UH, UK. ⁵School of Life and Health Sciences, Aston University, Birmingham B4 7ET, UK. ⁶British Tinnitus Association, Ground Floor, Unit 5, Acorn Business Park, Woodseats Close, Sheffield S8 0TB, UK. ⁷Clitheroe Therapies Clinic, 3 Castlegate, Clitheroe, Lancashire BB7 1AZ, UK. ⁸Department of Psychology, University of Stirling, Stirling FK9 4LA, UK.

Received: 16 November 2016 Accepted: 13 April 2017

Published online: 15 May 2017

References

1. Davis A, El Refaie A. Epidemiology of tinnitus. In: Tyler R, editor. *Tinnitus Handbook*. San Diego: Singular, Thomson Learning; 2000. p. 1–23.
2. Tyler R, Baker L. Difficulties experienced by tinnitus sufferers. *J Speech Hear Disord*. 1983;48:150–4.
3. Pinto PC, Marcelos CM, Mezzasalma MA, Osterne FJ, de Melo Tavares de Lima MA, Nardi AE. Tinnitus and its association with psychiatric disorders: systematic review. *J Laryngol Otol*. 2014;128:660–4.
4. Department of Health. *Provision of services for adults with tinnitus. A Good Practice Guide*. London: Central Office of Information; 2009.

5. Hoare DJ, Gander PE, Collins L, Smith S, Hall DA. Management of tinnitus in English NHS Audiology Departments: an evaluation of current practice. *J Eval Clin Pract.* 2012;18:326–34.
6. McKenna L, Handscomb L, Hoare DJ, Hall DA. A scientific cognitive-behavioral model of tinnitus: novel conceptualizations of tinnitus distress. *Front Neurol.* 2014;5:196.
7. Martinez-Devesa P, Perera R, Theodoulou M, Waddell A. Cognitive behavioural therapy for tinnitus. *Cochrane Database Syst Rev.* 2010;9:CD005233.
8. Hesser H, Weise C, Westin VZ, Andersson G. A systematic review and meta-analysis of randomized controlled trials of cognitive-behavioral therapy for tinnitus distress. *Clin Psychol Rev.* 2011;31:545–53.
9. Hoare DJ, Kowalkowski VL, Kang S, Hall DA. Systematic review and meta-analyses of RCTs examining tinnitus management. *Laryngoscope.* 2011;121:1555–64.
10. Wan Suhailah WH, Mohd Normani Z, Nik Adilah NO, Azizah O, Aw CL, Zuraida Z. The effectiveness of psychological interventions among tinnitus sufferers: a review. *Med J Malaysia.* 2015;70:188–97.
11. Hall DA, Mohamad N, Firkins L, Fenton M, Stockdale D. Identifying and prioritising unmet research questions for people with tinnitus: the James Lind Alliance Tinnitus Priority Setting Partnership. *Clin Investig.* 2013;3:1–8.
12. Hoare DJ, Broomhead E, Stockdale D, Kennedy V. Equity and person-centeredness in provision of tinnitus services in UK National Health Service audiology departments. *Eur J Pers Cent Healthc.* 2015;3:318–26.
13. Gander PE, Hoare DJ, Collins L, Smith S, Hall DA. Tinnitus referral pathways with the National Health Service in England: a survey of their perceived effectiveness among audiology staff. *BMC Health Serv Res.* 2011;11:162.
14. Craig P, Dieppe P, Macintyre S, Michie S, Nazareth I, Petticrew M. Developing and evaluating complex interventions: the new Medical Research Council guidance. *Br Med J.* 2008;337:a1655.
15. Thompson DM, Hall DA, Walker D-M, Hoare DJ. Psychological therapy for people with tinnitus: a scoping review of treatment components. *Ear Hear.* 2016. Advanced Online Publication. doi:10.1097/AUD.0000000000000363.
16. Spector A, Orrell M, Lattimer M, Hoe J, King M, Harwood K, et al. Cognitive behavioural therapy (CBT) for anxiety in people with dementia: study protocol for a randomised controlled trial. *Trials.* 2012;13:197.
17. Murphy MK, Black NA, Lamping DL, McKee CM, Sanderson CF, Askham J, et al. Consensus development methods and their use in clinical guideline development. *Health Technol Assess.* 1998;2:1–88.
18. McCulloch A, McMurrin M. The features of a good treatment manual: a Delphi survey of experts. *Psychol Crime Law.* 2007;13:265–74.
19. Julious SA. Sample size of 12 per group rule of thumb for a pilot study. *Pharm Stat.* 2005;4:287–91.
20. Sim J, Lewis M. The size of a pilot study for a clinical trial should be calculated in relation to considerations of precision and efficiency. *J Clin Epidemiol.* 2012;65:301–8.
21. Shargorodsky J, Curhan GC, Farwell WR. Prevalence and characteristics of tinnitus among US adults. *Am J Med.* 2010;123:711–8.
22. McCormack A, Edmondson-Jones M, Fortnum H, Dawes P, Middleton H, Munro KJ, et al. The prevalence of tinnitus and the relationship with neuroticism in a middle-aged UK population. *J Psychosom Res.* 2014;76:56–60.
23. Meikle MB, Henry JA, Griest SE, Stewart BJ, Abrams HB, McArdle R, et al. The tinnitus functional index: development of a new clinical measure for chronic, intrusive tinnitus. *Ear Hear.* 2012;33:153–76.
24. Wilson PH, Henry JL. Tinnitus Cognitions Questionnaire: development and psychometric properties of a measure of dysfunctional cognitions associated with tinnitus. *Int Tinnitus J.* 1998;4:23–30.
25. Barkham M, Mellor-Clark J, Connell J, Cahill J. A core approach to practice-based evidence: a brief history of the origins and applications of the CORE-OM and CORE System. *Couns Psychother Res.* 2006;6:3–15.
26. Furlong WJ, Feeny DH, Torrance GW, Barr RD. The Health Utilities Index (HUI) system for assessing health-related quality of life in clinical studies. *Ann Med.* 2001;33:375–84.
27. Horvath AO, Greenberg LS. Development and validation of the working alliance inventory. *J Couns Psychol.* 1989;36:223–33.
28. Beecham J, Knapp M. Costing psychiatric interventions. In: Thornicroft G, editor. *Measuring Mental Health Needs.* 2nd ed. London: Gaskell; 2001. p. 200–24.
29. Braun V, Clarke V. Using thematic analysis in psychology. *Qual Res Psychol.* 2006;3:77–101.

Submit your next manuscript to BioMed Central and we will help you at every step:

- We accept pre-submission inquiries
- Our selector tool helps you to find the most relevant journal
- We provide round the clock customer support
- Convenient online submission
- Thorough peer review
- Inclusion in PubMed and all major indexing services
- Maximum visibility for your research

Submit your manuscript at
www.biomedcentral.com/submit

