

Submillimeter H₂O and H₂O⁺ emission in lensed ultra- and hyper-luminous infrared galaxies at $z \sim 2-4$ ★,★★

C. Yang (杨辰涛)^{1,2,3,4,5}, A. Omont^{4,5}, A. Beelen², E. González-Alfonso⁶, R. Neri⁷, Y. Gao (高煜)¹, P. van der Werf⁸, A. Weiß⁹, R. Gavazzi^{4,5}, N. Falstad¹⁰, A. J. Baker¹¹, R. S. Busmann¹², A. Cooray¹³, P. Cox¹⁴, H. Dannerbauer¹⁵, S. Dye¹⁶, M. Guélin⁷, R. Ivison^{17,18}, M. Krips⁷, M. Lehnert^{4,5}, M. J. Michałowski¹⁷, D. A. Riechers¹², M. Spaans¹⁹, and E. Valiante²⁰

(Affiliations can be found after the references)

Received 19 January 2016 / Accepted 20 July 2016

ABSTRACT

We report rest-frame submillimeter H₂O emission line observations of 11 ultra- or hyper-luminous infrared galaxies (ULIRGs or HyLIRGs) at $z \sim 2-4$ selected among the brightest lensed galaxies discovered in the *Herschel*-Astrophysical Terahertz Large Area Survey (*H-ATLAS*). Using the IRAM NOthern Extended Millimeter Array (NOEMA), we have detected 14 new H₂O emission lines. These include five $3_{21}-3_{12}$ ortho-H₂O lines ($E_{\text{up}}/k = 305$ K) and nine $J = 2$ para-H₂O lines, either $2_{02}-1_{11}$ ($E_{\text{up}}/k = 101$ K) or $2_{11}-2_{02}$ ($E_{\text{up}}/k = 137$ K). The apparent luminosities of the H₂O emission lines are $\mu L_{\text{H}_2\text{O}} \sim 6-21 \times 10^8 L_{\odot}$ ($3 < \mu < 15$, where μ is the lens magnification factor), with velocity-integrated line fluxes ranging from 4–15 Jy km s⁻¹. We have also observed CO emission lines using EMIR on the IRAM 30 m telescope in seven sources (most of those have not yet had their CO emission lines observed). The velocity widths for CO and H₂O lines are found to be similar, generally within 1 σ errors in the same source. With almost comparable integrated flux densities to those of the high- J CO line (ratios range from 0.4 to 1.1), H₂O is found to be among the strongest molecular emitters in high-redshift Hy/ULIRGs. We also confirm our previously found correlation between luminosity of H₂O ($L_{\text{H}_2\text{O}}$) and infrared (L_{IR}) that $L_{\text{H}_2\text{O}} \sim L_{\text{IR}}^{1.1-1.2}$, with our new detections. This correlation could be explained by a dominant role of far-infrared pumping in the H₂O excitation. Modelling reveals that the far-infrared radiation fields have warm dust temperature $T_{\text{warm}} \sim 45-75$ K, H₂O column density per unit velocity interval $N_{\text{H}_2\text{O}}/\Delta V \gtrsim 0.3 \times 10^{15}$ cm⁻² km⁻¹ s and 100 μm continuum opacity $\tau_{100} > 1$ (optically thick), indicating that H₂O is likely to trace highly obscured warm dense gas. However, further observations of $J \geq 4$ H₂O lines are needed to better constrain the continuum optical depth and other physical conditions of the molecular gas and dust. We have also detected H₂O⁺ emission in three sources. A tight correlation between $L_{\text{H}_2\text{O}}$ and $L_{\text{H}_2\text{O}^+}$ has been found in galaxies from low to high redshift. The velocity-integrated flux density ratio between H₂O⁺ and H₂O suggests that cosmic rays generated by strong star formation are possibly driving the H₂O⁺ formation.

Key words. galaxies: high-redshift – galaxies: ISM – infrared: galaxies – submillimeter: galaxies – radio lines: ISM – ISM: molecules

1. Introduction

After molecular hydrogen (H₂) and carbon monoxide (CO), the water molecule (H₂O) can be one of the most abundant molecules in the interstellar medium (ISM) in galaxies. It provides some important diagnostic tools for various physical and chemical processes in the ISM (e.g. van Dishoeck et al. 2013, and references therein). Prior to the *Herschel* Space Observatory (Pilbratt et al. 2010), in extragalactic sources, non-maser H₂O rotational transitions were only detected by the Infrared Space Observatory (ISO, Kessler et al. 1996) in the form of far-infrared absorption lines (González-Alfonso et al. 2004, 2008). Observations of local infrared bright galaxies by *Herschel* have revealed a rich spectrum of submillimeter (submm) H₂O emission lines (submm H₂O refers to rest-frame submillimeter H₂O emission throughout this paper if not otherwise specified). Many of these lines are emitted from high-excitation rotational levels with upper-level energies up to $E_{\text{up}}/k = 642$ K

(e.g. van der Werf et al. 2010; González-Alfonso et al. 2010, 2012, 2013; Rangwala et al. 2011; Kamenetzky et al. 2012; Spinoglio et al. 2012; Meijerink et al. 2013; Pellegrini et al. 2013; Pereira-Santaella et al. 2013). Excitation analysis of these lines has revealed that they are probably excited through absorption of far-infrared photons from thermal dust emission in warm dense regions of the ISM (e.g. González-Alfonso et al. 2010). Therefore, unlike the canonical CO lines that trace collisional excitation of the molecular gas, these H₂O lines represent a powerful diagnostic of the far-infrared radiation field.

Using the *Herschel* archive data, Yang et al. (2013, hereafter Y13) have undertaken a first systematic study of submm H₂O emission in local infrared galaxies. H₂O was found to be the strongest molecular emitter after CO within the submm band in those infrared-bright galaxies, even with higher flux density than that of CO in some local ULIRGs (velocity-integrated flux density of H₂O($3_{21}-3_{12}$) is larger than that of CO(5–4) in four galaxies out of 45 in the Y13 sample). The luminosities of the submm H₂O lines ($L_{\text{H}_2\text{O}}$) are near-linearly correlated with total infrared luminosity (L_{IR} , integrated over 8–1000 μm) over three orders of magnitude. The correlation is revealed to be a straightforward result of far-infrared pumping: H₂O molecules are excited to higher energy levels through absorbing far-infrared photons, then the upper level molecules cascade toward the lines we

* *Herschel* is an ESA space observatory with science instruments provided by European-led Principal Investigator consortia and with important participation from NASA.

** The reduced spectra as FITS files are only available at the CDS via anonymous ftp to cdsarc.u-strasbg.fr (130.79.128.5) or via <http://cdsarc.u-strasbg.fr/viz-bin/qcat?J/A+A/595/A80>

observed in an almost constant fraction (Fig. 1). Although the galaxies dominated by active galactic nuclei (AGN) have somewhat lower ratios of $L_{\text{H}_2\text{O}}/L_{\text{IR}}$, there does not appear to be a link between the presence of an AGN and the submm H₂O emission (Y13). The H₂O emission is likely to trace the far-infrared radiation field generated in star-forming nuclear regions in galaxies, explaining its tight correlation with far-infrared luminosity.

Besides detections of the H₂O lines in local galaxies from space telescopes, redshifted submm H₂O lines in high-redshift lensed Ultra- and Hyper-Luminous InfraRed Galaxies (ULIRGs, $10^{13} L_{\odot} > L_{\text{IR}} \geq 10^{12} L_{\odot}$; HyLIRGs, $L_{\text{IR}} \geq 10^{13} L_{\odot}$) can also be detected by ground-based telescopes in atmospheric windows with high transmission. Strong gravitational lensing boosts the flux and allows one to detect the H₂O emission lines easily. Since our first detection of submm H₂O in a lensed *Herschel* source at $z = 2.3$ (Omont et al. 2011) using the IRAM Northern Extended Millimeter Array (NOEMA), several individual detections at high-redshift have also been reported (Lis et al. 2011; van der Werf et al. 2011; Bradford et al. 2011; Combes et al. 2012; Lupu et al. 2012; Bothwell et al. 2013; Omont et al. 2013; Vieira et al. 2013; Weiß et al. 2013; Rawle et al. 2014). These numerous and easy detections of H₂O in high-redshift lensed ULIRGs show that its lines are the strongest submm molecular lines after CO and may be an important tool for studying these galaxies.

We have carried out a series of studies focussing on submm H₂O emission in high-redshift lensed galaxies since our first detection. Through the detection of $J = 2$ H₂O lines in seven high-redshift lensed Hy/ULIRGs reported by Omont et al. (2013, hereafter O13), a slightly super-linear correlation between $L_{\text{H}_2\text{O}}$ and L_{IR} ($L_{\text{H}_2\text{O}} \propto L_{\text{IR}}^{1.2}$) from local ULIRGs and high-redshift lensed Hy/ULIRGs has been found. This result may imply again that far-infrared pumping is important for H₂O excitation in high-redshift extreme starbursts. The average ratios of $L_{\text{H}_2\text{O}}$ to L_{IR} for the $J = 2$ H₂O lines in the high-redshift sources tend to be 1.8 ± 0.9 times higher than those seen locally (Y13). This shows that the same physics with infrared pumping should dominate H₂O excitation in ULIRGs at low and high redshift, with some specificity at high-redshift probably linked to the higher luminosities.

Modelling provides additional information about the H₂O excitation. For example, through LVG modelling, Riechers et al. (2013) argue that the excitation of the submm H₂O emission in the $z \sim 6.3$ submm galaxy is far-infrared pumping dominated. Modelling of the local *Herschel* galaxies of Y13 has been carried out by González-Alfonso et al. (2014, hereafter G14). They confirm that far-infrared pumping is the dominant mechanism responsible for the submm H₂O emission (except for the ground-state emission transitions, such as para-H₂O transition $1_{11}-0_{00}$) in the extragalactic sources. Moreover, collisional excitation of the low-lying ($J \leq 2$) H₂O lines could also enhance the radiative pumping of the ($J \geq 3$) high-lying lines. The ratio between low-lying and high-lying H₂O lines is sensitive to the dust temperature (T_d) and H₂O column density ($N_{\text{H}_2\text{O}}$). From modelling the average of local star-forming- and mild-AGN-dominated galaxies, G14 show that the submm H₂O emission comes from regions with $N_{\text{H}_2\text{O}} \sim (0.5-2) \times 10^{17} \text{ cm}^{-2}$ and a $100 \mu\text{m}$ continuum opacity of $\tau_{100} \sim 0.05-0.2$, where H₂O is mainly excited by warm dust with a temperature range of 45–75 K. H₂O lines thus provide key information about the properties of the dense cores of ULIRGs, that is, their H₂O content, the infrared radiation field and the corresponding temperature of dust that is warmer than the core outer layers and dominates the far-infrared emission.

Observations of the submm H₂O emission, together with appropriate modelling and analysis, therefore allows us to study the properties of the far-infrared radiation sources in great detail. So far, the excitation analysis combining both low- and high-lying H₂O emission has only been done in a few case studies. Using H₂O excitation modelling considering both collision and far-infrared pumping, González-Alfonso et al. (2010) and van der Werf et al. (2011) estimate the sizes of the far-infrared radiation fields in Mrk 231 and APM08279+5255 (APM08279 hereafter), which are not resolved by the observations directly, and suggest their AGN dominance based on their total enclosed energies. This again demonstrates that submm H₂O emission is a powerful diagnostic tool which can even transcend the angular resolution of the telescopes.

The detection of submm H₂O emission in the *Herschel*-ATLAS¹ (Eales et al. 2010, *H*-ATLAS hereafter) sources through gravitational lensing allows us to characterise the far-infrared radiation field generated by intense star-forming activity, and possibly AGN, and learn the physical conditions in the warm dense gas phase in extreme starbursts in the early Universe. Unlike standard dense gas tracers such as HCN, which is weaker at high-redshift compared to that of local ULIRGs (Gao et al. 2007), submm H₂O lines are strong and even comparable to high- J CO lines in some galaxies (Y13; O13). Therefore, H₂O is an efficient tracer of the warm dense gas phase that makes up a major fraction of the total molecular gas mass in high-redshift Hy/ULIRGs (Casey et al. 2014). The successful detections of submm H₂O lines in both local (Y13) and the high-redshift universe (O13) show the great potential of a systematic study of H₂O emission in a large sample of infrared galaxies over a wide range in redshift (from local up to $z \sim 4$) and luminosity ($L_{\text{IR}} \sim 10^{10}-10^{13} L_{\odot}$). However, our previous high-redshift sample was limited to seven sources and to one $J = 2$ para-H₂O line ($E_{\text{up}}/k = 100-127$ K) per source (O13). In order to further constrain the conditions of H₂O excitation, to confirm the dominant role of far-infrared pumping and to learn the physical conditions of the warm dense gas phase in high-redshift starbursts, it is essential to extend the studies to higher excitation lines. We thus present and discuss here the results of such new observations of a strong $J = 3$ ortho-H₂O line with $E_{\text{up}}/k = 304$ K in six strongly lensed *H*-ATLAS galaxies at $z \sim 2.8-3.6$, where a second lower-excitation $J = 2$ para-H₂O line was also observed (Fig. 1 for the transitions and the corresponding E_{up}).

We describe our sample, observation and data reduction in Section 2. The observed properties of the high-redshift submm H₂O emission are presented in Sect. 3. Discussions of the lensing properties, $L_{\text{H}_2\text{O}}-L_{\text{IR}}$ correlation, H₂O excitation, comparison between H₂O and CO, AGN contamination will be given in Sect. 4. Section 5 describes the detection of H₂O⁺ lines. We summarise our results in Sect. 6. A flat Λ CDM cosmology with $H_0 = 71 \text{ km s}^{-1} \text{ Mpc}^{-1}$, $\Omega_M = 0.27$, $\Omega_{\Lambda} = 0.73$ (Spergel et al. 2003) is adopted throughout this paper.

2. Sample and observation

Our sample consists of eleven extremely bright high-redshift sources with $F_{500 \mu\text{m}} > 200 \text{ mJy}$ discovered by the *H*-ATLAS survey (Eales et al. 2010). Together with the seven similar

¹ The *Herschel*-ATLAS is a project with *Herschel*, which is an ESA space observatory with science instruments provided by European-led Principal Investigator consortia and with important participation from NASA. The *H*-ATLAS website is <http://www.h-atlas.org>

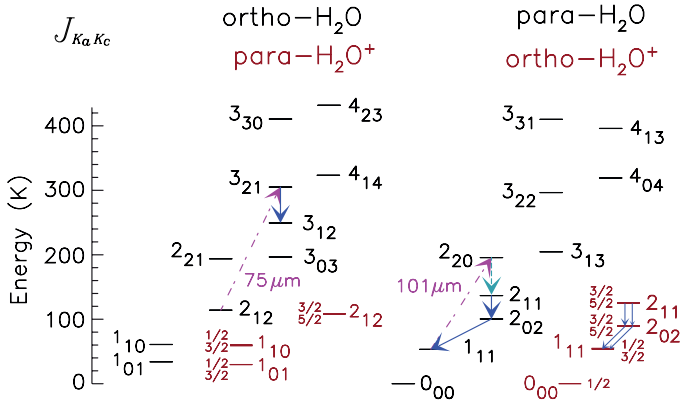


Fig. 1. Energy level diagrams of H₂O and H₂O⁺ shown in black and red, respectively. Dark blue arrows are the submm H₂O transitions we have observed in this work. Pink dashed lines show the far-infrared pumping path of the H₂O excitation in the model we use, with the wavelength of the photon labeled. The light blue dashed arrow is the transition from para-H₂O energy level 2₂₀ to 2₁₁ along the cascade path from 2₂₀ to 1₁₁. Rotational energy levels of H₂O and H₂O⁺, as well as fine structure component levels of H₂O⁺ are also shown in the figure.

sources reported in our previous H₂O study (O13), they include all the brightest high-redshift *H*-ATLAS sources ($F_{500\ \mu\text{m}} > 170\ \text{mJy}$), but two, imaged at $880\ \mu\text{m}$ with SMA by Bussmann et al. (2013, hereafter B13). In agreement with the selection according to the methods of Negrello et al. (2010), the detailed lensing modelling performed by B13 has shown that all of them are strongly lensed, but one, G09v1.124 (Iverson et al. 2013, see below). The sample of our present study is thus well representative of the brightest high-redshift submillimeter sources with $F_{500\ \mu\text{m}} > 200\ \text{mJy}$ (with apparent total infrared luminosity $\sim 5-15 \times 10^{13} L_{\odot}$ and $z \sim 1.5-4.2$) found by *H*-ATLAS in its equatorial (“GAMA”) and north-galactic-pole (“NGP”) fields, in $\sim 300\ \text{deg}^2$ with a density $\sim 0.05\ \text{deg}^{-2}$. In our previous project (O13), we observed H₂O in seven strongly lensed high-redshift *H*-ATLAS galaxies from the B13 sample. In this work, in order to observe the high-excitation ortho-H₂O(3₂₁–3₁₂) line with rest frequency of 1162.912 GHz with the IRAM/NOEMA, we selected the brightest sources at $500\ \mu\text{m}$ with $z \gtrsim 2.8$ so that the redshifted lines could be observed in a reasonably good atmospheric window at $\nu_{\text{obs}} \lesssim 300\ \text{GHz}$. Eight sources with such redshift were selected from the B13 *H*-ATLAS sample.

B13 provide lensing models, magnification factors (μ) and inferred intrinsic properties of these galaxies and list their CO redshifts which come from Harris et al. (2012); Harris et al. (in prep.); Lupu et al. (in prep.); Krips et al. (in prep.) and Riechers et al. (in prep.).

In our final selection of the sample to be studied in the H₂O(3₂₁–3₁₂) line, we then removed two sources, SDP81 and G12v2.30, that were previously observed in H₂O (O13; and also ALMA Partnership, Vlahakis et al. 2015, for SDP81), because the $J = 2$ H₂O emission is too weak and/or the interferometry could resolve out some flux considering the lensing image. The observed high-redshift sample thus consists of two GAMA-field sources: G09v1.97 and G12v2.43, and four sources in the *H*-ATLAS NGP field: NCv1.143, NAV1.195, NAV1.177 and NBv1.78 (Tables 1 and 2). Among the six remaining sources at redshift between 2.8 and 3.6, only one, NBv1.78, has been observed previously in a low-excitation line, para-H₂O(2₀₂–1₁₁) (O13). Therefore, we have observed both para-H₂O line 2₀₂–1₁₁

or 2₁₁–2₀₂ and ortho-H₂O(3₂₁–3₁₂) in the other five sources, in order to compare their velocity-integrated flux densities.

In addition, we also observed five sources mostly at lower redshifts in para-H₂O lines 2₀₂–1₁₁ or 2₁₁–2₀₂ (Tables 1 and 2) to complete the sample of our H₂O low-excitation study. They are three strongly lensed sources, G09v1.40, NAV1.56 and SDP11, a hyper-luminous cluster source G09v1.124 (Iverson et al. 2013), and a $z \sim 3.7$ source, NCv1.268 for which we did not propose a $J = 3$ H₂O observation, considering its large linewidth which could bring difficulties in line detection.

As our primary goal is to obtain a detection of the submm H₂O lines, we carried out the observations in the compact, D configuration of NOEMA. The baselines extended from 24 to 176 m, resulting in a synthesised beam with modest/low resolution of $\sim 1.0'' \times 0.9''$ to $\sim 5.6'' \times 3.3''$ as shown in Table 1. The H₂O observations were conducted from January 2012 to December 2013 in good atmospheric conditions (seeing of $0.3''-1.5''$) stability and reasonable transparency ($\text{PWV} \leq 1\ \text{mm}$). The total on source time was $\sim 1.5-8\ \text{h}$ per source. 2 mm, 1.3 mm and 0.8 mm bands covering 129–174, 201–267 and 277–371 GHz, respectively, were used. All the central observation frequencies were chosen based on previous redshifts given by B13 according to the previous CO detections (Table 2). In all cases but one, the frequencies of our detections of H₂O lines are consistent with these CO redshifts. The only exception is G09v1.40 where our H₂O redshift disagrees with the redshift of $z = 2.0894 \pm 0.0009$ given by Lupu et al. (in prep.), which is quoted by B13. We find $z = 2.0925 \pm 0.0001$ in agreement with previous CO(3–2) observations (Riechers et al., in prep.). We used the WideX correlator which provided a contiguous frequency coverage of 3.6 GHz in dual polarisation with a fixed channel spacing of 1.95 MHz.

The phase and bandpass were calibrated by measuring standard calibrators that are regularly monitored at the IRAM/NOEMA, including 3C 279, 3C 273, MWC349 and 0923+392. The accuracy of the flux calibration is estimated to range from $\sim 10\%$ in the 2 mm band to $\sim 20\%$ in the 0.8 mm band. Calibration, imaging, cleaning and spectra extraction were performed within the GILDAS² packages CLIC and MAPPING.

To compare the H₂O emission with the typical molecular gas tracer, CO, we also observed the sources for CO lines using the EMIR receiver at the IRAM 30 m telescope. The CO data will be part of a systematic study of molecular gas excitation in *H*-ATLAS lensed Hy/ULIRGs, and a full description of the data and the scientific results will be given in a following paper (Yang et al., in prep.). The global CO emission properties of the sources are listed in Table 3 where we list the CO fluxes and linewidths. A brief comparison of the emission between H₂O and CO lines will be given in Sect. 4.3.

3. Results

A detailed discussion of the observation results for each source is given in Appendix A, including the strength of the H₂O emission, the image extension of H₂O lines and the continuum (Fig. A.1), the H₂O spectra and linewidths (Fig. 2) and their comparison with CO (Table 3). We give a synthesis of these results in this section.

² See <http://www.iram.fr/IRAMFR/GILDAS> for more information about the GILDAS softwares.

Table 1. Observation log.

IAU name	Source	RA (J2000)	Dec (J2000)	RA _{pk} (J2000)	Dec _{pk} (J2000)	H ₂ O line	ν_{obs} (GHz)	Beam ($''$)	t_{on} (h)
<i>H</i> -ATLAS J083051.0+013224	G09v1.97	08:30:51.02	+01:32:24.88	08:30:51.17	+01:32:24.39	2 ₁₁ –2 ₀₂	162.286	5.6 × 3.3	3.5
				08:30:51.17	+01:32:24.09	3 ₂₁ –3 ₁₂	250.952	2.6 × 1.1	3.1
<i>H</i> -ATLAS J113526.3–014605	G12v2.43	11:35:26.36	–01:46:05.56	11:35:26.27	–01:46:06.44	2 ₀₂ –1 ₁₁	239.350	2.3 × 1.0	6.9
				11:35:26.28	–01:46:06.43	3 ₂₁ –3 ₁₂	281.754	2.2 × 1.1	1.5
<i>H</i> -ATLAS J125632.7+233625	NCv1.143	12:56:32.70	+23:36:24.86	12:56:32.56	+23:36:27.92	2 ₁₁ –2 ₀₂	164.739	3.1 × 2.9	1.5
				12:56:32.56	+23:36:27.69	3 ₂₁ –3 ₁₂	254.745	2.1 × 1.0	1.5
<i>H</i> -ATLAS J132630.1+334410	NAv1.195	13:26:30.12	+33:44:09.90	13:26:30.14	+33:44:09.11	2 ₀₂ –1 ₁₁	250.045	2.0 × 1.7	3.8
				13:26:30.14	+33:44:09.09	3 ₂₁ –3 ₁₂	293.334	1.0 × 0.9	3.1
<i>H</i> -ATLAS J132859.3+292327	NAv1.177	13:28:59.29	+29:23:27.07	13:28:59.25	+29:23:26.18	2 ₀₂ –1 ₁₁	261.495	1.9 × 1.7	2.3
				13:28:59.25	+29:23:26.34	3 ₂₁ –3 ₁₂	307.812	1.6 × 0.9	2.3
<i>H</i> -ATLAS J133008.4+245900	NBv1.78	13:30:08.56	+24:58:58.30	13:30:08.56	+24:58:58.55	3 ₂₁ –3 ₁₂	282.878	1.7 × 1.1	4.2
<i>H</i> -ATLAS J084933.4+021443	G09v1.124-W G09v1.124-T	08:49:33.36	+02:14:42.30	08:49:33.59	+02:14:44.68	2 ₁₁ –2 ₀₂	220.537	1.8 × 1.2	8.4
				08:49:32.95	+02:14:39.70				
<i>H</i> -ATLAS J085358.9+015537	G09v1.40	08:53:58.90	+01:55:37.00	08:53:58.84	+01:55:37.75	2 ₁₁ –2 ₀₂	243.425	1.8 × 1.0	1.9
<i>H</i> -ATLAS J091043.1–000321	SDP11	09:10:43.09	–00:03:22.51	09:10:43.06	–00:03:22.10	2 ₀₂ –1 ₁₁	354.860	1.9 × 1.5	3.8
<i>H</i> -ATLAS J125135.4+261457	NCv1.268	12:51:35.46	+26:14:57.52	12:51:35.38	+26:14:58.12	2 ₁₁ –2 ₀₂	160.864	2.9 × 2.6	7.7
<i>H</i> -ATLAS J134429.4+303036	NAv1.56	13:44:29.52	+30:30:34.05	13:44:29.46	+30:30:34.01	2 ₁₁ –2 ₀₂	227.828	1.7 × 1.7	2.3

Notes. RA and Dec are the J2000 *Herschel* coordinates which were taken as the centres of the NOEMA images displayed in Fig. A.1; RA_{pk} and Dec_{pk} are the J2000 coordinates of the NOEMA dust continuum image peaks; ν_{obs} is the central observed frequency. The rest-frame frequencies of para-H₂O 2₀₂–1₁₁, 2₁₁–2₀₂ and ortho-H₂O 3₂₁–3₁₂ lines are: 987.927 GHz, 752.033 GHz and 1162.912 GHz, respectively (the rest-frame frequencies are taken from the JPL catalogue: <http://spec.jpl.nasa.gov>); t_{on} is the on-source integration time. The source G09v1.124, which is not resolved by SPIRE, is a cluster that consists of two main components: eastern component W (G09v1.124-W) and western component T (G09v1.124-T) as described in Ivison et al. (2013) (see also Fig. A.3).

Table 2. Previously observed properties of the sample.

Source	z	F_{250} (mJy)	F_{350} (mJy)	F_{500} (mJy)	F_{880} (mJy)	r_{half} (kpc)	Σ_{SFR} ($10^3 M_{\odot} \text{ yr}^{-1} \text{ kpc}^{-2}$)	$f_{1.4 \text{ GHz}}$ (mJy)	T_{d} (K)	μ	μL_{IR} ($10^{13} L_{\odot}$)
G09v1.97	3.634	260 ± 7	321 ± 8	269 ± 9	85.5 ± 4.0	0.85	0.91 ± 0.15	±0.15	44 ± 1	6.9 ± 0.6	15.3 ± 4.3
G12v2.43	3.127	290 ± 7	295 ± 8	216 ± 9	48.6 ± 2.3	–	–	±0.15	–	–	(8.3 ± 1.7)
NCv1.143	3.565	214 ± 7	291 ± 8	261 ± 9	97.2 ± 6.5	0.40	2.08 ± 0.77	0.61 ± 0.16	40 ± 1	11.3 ± 1.7	12.8 ± 4.3
NAv1.195	2.951	179 ± 7	279 ± 8	265 ± 9	65.2 ± 2.3	1.57	0.21 ± 0.04	±0.14	36 ± 1	4.1 ± 0.3	7.4 ± 2.0
NAv1.177	2.778	264 ± 9	310 ± 10	261 ± 10	50.1 ± 2.1	–	–	±0.15	–	–	(5.5 ± 1.1)
NBv1.78	3.111	273 ± 7	282 ± 8	214 ± 9	59.2 ± 4.3	0.55	1.09 ± 1.41	0.67 ± 0.20	43 ± 1	13.0 ± 1.5	10.7 ± 3.9
G09v1.124-W ^a	2.410	242 ± 7	293 ± 8	231 ± 9	50.0 ± 3.5	–	–	±0.15	40 ± 1	1	3.3 ± 0.3
G09v1.124-T ^a	2.410	242 ± 7	293 ± 8	231 ± 9	50.0 ± 3.5	–	–	±0.15	36 ± 1	1.5 ± 0.2	2.7 ± 0.8
G09v1.40	2.089 ^b	389 ± 7	381 ± 8	241 ± 9	61.4 ± 2.9	0.41	0.77 ± 0.30	0.75 ± 0.15	36 ± 1	15.3 ± 3.5	6.5 ± 2.5
SDP11	1.786	417 ± 6	378 ± 7	232 ± 8	30.6 ± 2.4	0.89	0.22 ± 0.08	0.66 ± 0.14	41 ± 1	10.9 ± 1.3	6.2 ± 1.9
NCv1.268	3.675	145 ± 7	201 ± 8	212 ± 9	78.9 ± 4.4	0.93	0.31 ± 0.14	1.10 ± 0.14	39 ± 1	11.0 ± 1.0	9.5 ± 2.7
NAv1.56	2.301	481 ± 9	484 ± 13	344 ± 11	73.1 ± 2.4	1.50	0.14 ± 0.08	1.12 ± 0.27	38 ± 1	11.7 ± 0.9	11.3 ± 3.1

Notes. z is the redshift inferred from previous CO detection quoted by B13 (see the references therein); F_{250} , F_{350} and F_{500} are the SPIRE flux densities at 250, 350 and 500 μm , respectively (Pascale et al. 2011); F_{880} is the SMA flux density at 880 μm ; r_{half} and Σ_{SFR} are the intrinsic half-light radius at 880 μm and the lensing-corrected surface SFR (star formation rate) density (Sect. 4.2); $f_{1.4 \text{ GHz}}$ is the 1.4 GHz band flux densities from the VLA FIRST survey; T_{d} is the cold-dust temperature taken from B13 (note that the errors quoted for T_{d} are significantly underestimated since the uncertainties from differential lensing and single-temperature dust SED assumption are not fully considered); μ is the lensing magnification factor from B13, except for G09v1.124 which is adopted from Ivison et al. (2013); μL_{IR} is the apparent total infrared luminosity mostly inferred from B13. The μL_{IR} in brackets are not listed in B13, thus we infer them from single modified black body dust SED fitting using the submm photometry data listed in this table. ^(a) The cluster source G09v1.124 includes two main components: G09v1.124-W to the east and G09v1.124-T to the west (Fig. A.3) and the values of these two rows are quoted from Ivison et al. (2013); ^(b) our H₂O observation gives $z = 2.093$ for G09v1.40. This value is slightly different from the value of 2.089 quoted by B13 from Lupu et al. (in prep.) obtained by CSO/Z-Spec, but consistent with CO(3–2) observation by Riechers et al. (in prep.).

3.1. General properties of the H₂O emissions

To measure the linewidth, velocity-integrated flux density and the continuum level of the spectra from the source peak and from the entire source, we extract each spectrum from the CLEANed image at the position of the source peak in a single synthesis beam and the spectrum integrated over the entire source. Then we fit them with Gaussian profiles using MPFIT (Markwardt 2009).

We detect the high-excitation ortho-H₂O(3₂₁–3₁₂) in five out of six observed sources, with high signal to noise ratios

($S/N > 9$) and velocity-integrated flux densities comparable to those of the low-excitation $J = 2$ para-H₂O lines (Table 4 and Figs. 2 and A.1). We also detect nine out of eleven $J = 2$ para-H₂O lines, either 2₀₂–1₁₁ or 2₁₁–2₀₂, with $S/N \geq 6$ in terms of their velocity-integrated flux density, plus one tentative detection of H₂O(2₀₂–1₁₁) in SDP11. We present the values of velocity-integrated H₂O flux density detected at the source peak in a single synthesised beam, $I_{\text{H}_2\text{O}}^{\text{pk}}$, and the velocity-integrated H₂O flux density over the entire source, $I_{\text{H}_2\text{O}}$ (Table 4). The detected H₂O lines are strong, with $I_{\text{H}_2\text{O}} = 3.7$ –14.6 Jy km s^{–1}. Even considering gravitational lensing correction, this is consistent with

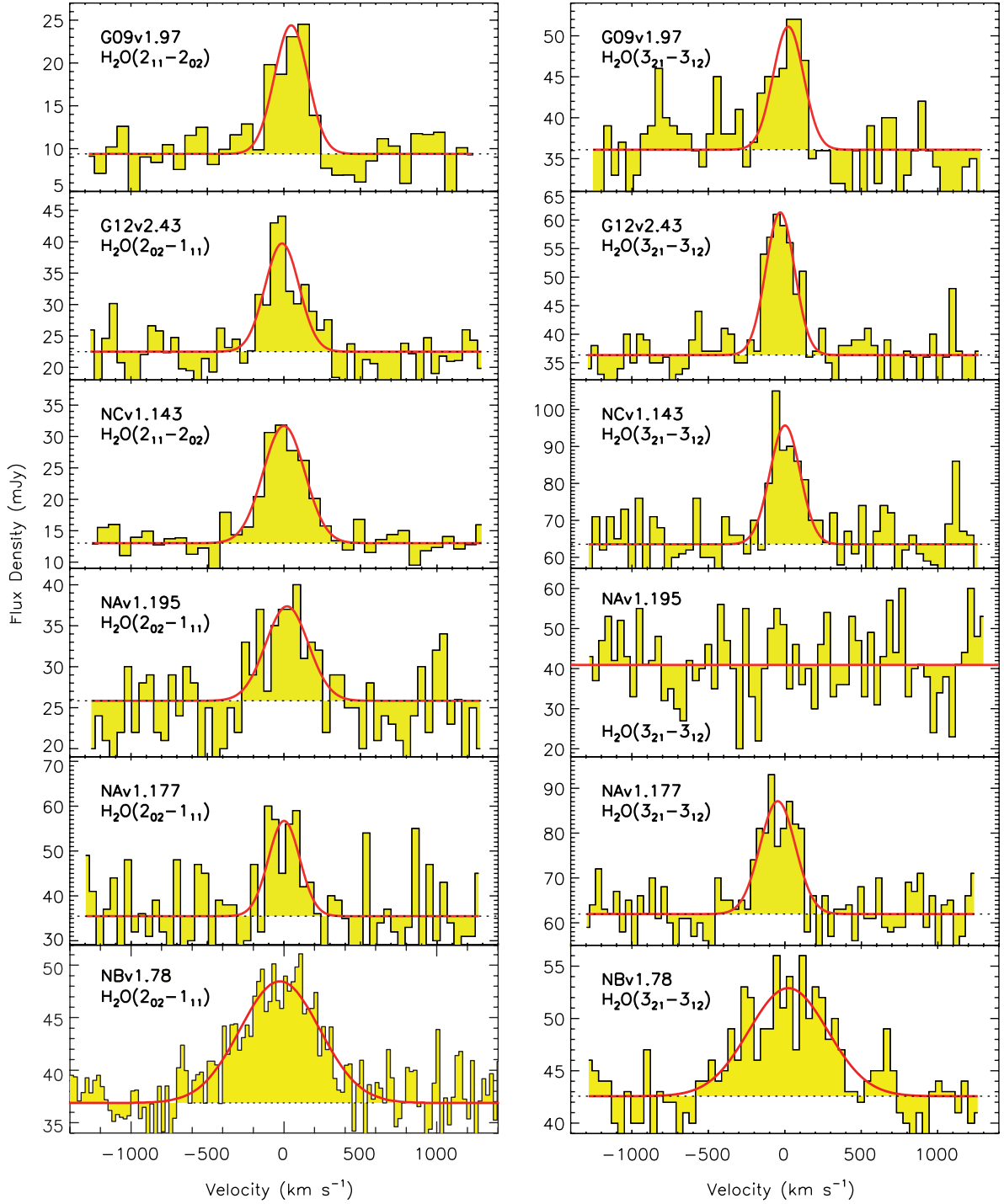


Fig. 2a. Spatially integrated spectra of H₂O in the six sources with both $J = 2$ para-H₂O and $J = 3$ ortho-H₂O lines observed. The red lines represent the Gaussian fitting to the emission lines. The H₂O($2_{02}-1_{11}$) spectrum of NBv1.78 is taken from O13. Except for H₂O($3_{21}-3_{12}$) in NAv1.195, all the $J = 2$ and $J = 3$ H₂O lines are well detected, with a high S/N and similar profiles in both lines for the same source.

our previous finding that high-redshift Hy/ULIRGs are very strong H₂O emitters, with H₂O flux density approaching that of CO (Tables 3 and 4 and Sect. 4.3). The majority of the images (7/11 for $J = 2$ lines and 3/4 for $J = 3$) are marginally resolved with $I_{\text{H}_2\text{O}}^{\text{pk}}/I_{\text{H}_2\text{O}} \sim 0.4-0.7$. They show somewhat lensed structures. The others are unresolved with $I_{\text{H}_2\text{O}}^{\text{pk}}/I_{\text{H}_2\text{O}} > 0.8$. All continuum emission flux densities ($S_{\nu}(\text{ct})^{\text{pk}}$ for the emission peak and $S_{\nu}(\text{ct})$ for the entire source) are very well detected ($S/N \geq 30$), with a range of total flux density of 9–64 mJy for $S_{\nu}(\text{ct})$. Figure A.1 shows the low-resolution images of H₂O and

the corresponding dust continuum emission at the observing frequencies. Because the positions of the sources were derived from *Herschel* observation, which has a large beamsize ($>17''$) comparing to the source size, the position of most of the sources are not perfectly centred at these *Herschel* positions as seen in the maps. The offsets are all within the position error of the *Herschel* measurement (Fig. A.1). G09v1.124 is a complex HyLIRG system including two main components eastern G09v1.124-W and western G09v1.124-T as described in Ivison et al. (2013). In Fig. A.3, we identified the two strong components separated

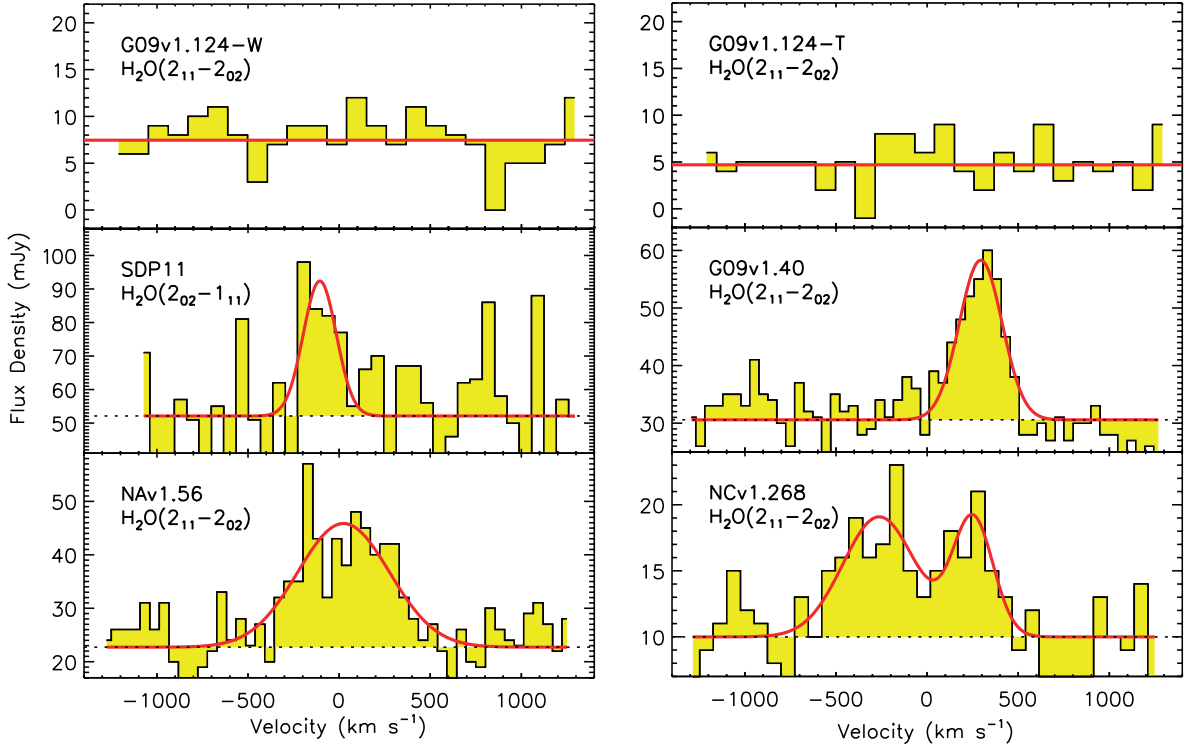


Fig. 2b. Spatially integrated spectra of H₂O of the five sources with only one $J = 2$ para-H₂O line observed. The red lines represent the Gaussian fitting to the emission lines. Except for the H₂O line in G09v1.124, all the $J = 2$ H₂O lines are well detected.

Table 3. Observed CO line properties using the IRAM 30 m/EMIR.

Source	CO line	I_{CO} (Jy km s ⁻¹)	ΔV_{CO} (km s ⁻¹)
G09v1.97	5–4	9.5 ± 1.2	224 ± 32
	6–5	10.4 ± 2.3	292 ± 86
NCv1.143	5–4	13.1 ± 1.0	273 ± 27
	6–5	11.0 ± 1.0	284 ± 27
NAv1.195	5–4	11.0 ± 0.6	281 ± 16
NAv1.177	3–2	6.8 ± 0.4	231 ± 15
	5–4	11.0 ± 0.6	230 ± 16
NBv1.78	5–4	10.3 ± 0.8	614 ± 53
	6–5	9.7 ± 1.0	734 ± 85
G09v1.40	4–3	7.5 ± 2.1	198 ± 51
NAv1.56	5–4	17.7 ± 6.6	432 ± 182

Notes. I_{CO} is the velocity-integrated flux density of CO; ΔV_{CO} is the linewidth (FWHM) derived from fitting a single Gaussian to the line profile.

about 10'', in agreement with Ivison et al. (2013). The $J = 2$ H₂O and dust continuum emissions in NBv1.78, NCv1.195, G09v1.40, SDP 11 and NAv1.56, as well as the $J = 3$ ortho-H₂O and the corresponding dust continuum emissions in G09v1.97, NCv1.143 and NAv1.177, are marginally resolved as shown in Fig. A.1. Their images are consistent with the corresponding SMA images (B13) in terms of their spatial distribution. The rest of the sources are not resolved by the low-resolution synthesised beams. The morphological structure of the H₂O emission is similar to the continuum for most sources as shown in Fig. A.1. The ratio $S_{\nu}(\text{ct})^{\text{pk}}/S_{\nu}(\text{ct})$ and $S_{\nu}(\text{H}_2\text{O})^{\text{pk}}/S_{\nu}(\text{H}_2\text{O})$ are in good agreement within the error. However, for NCv1.143 in which $S_{\nu}(\text{ct})^{\text{pk}}/S_{\nu}(\text{ct}) = 0.55 \pm 0.01$ and $S_{\nu}(\text{H}_2\text{O})^{\text{pk}}/S_{\nu}(\text{H}_2\text{O}) = 0.74 \pm 0.16$, the $J = 3$ ortho-H₂O emission appears more compact than the dust continuum. Generally it seems unlikely that

we have a significant fraction of missing flux for our sources. Nevertheless, the low angular resolution ($\sim 1''$ at best) limits the study of spatial distribution of the gas and dust in our sources. A detailed analysis of the images for each source is given in Appendix A.

The majority of the sources have H₂O (and CO) linewidths between 210 and 330 km s⁻¹, while the four others range between 500 and 700 km s⁻¹ (Table 4). Except NCv1.268, which shows a double-peaked line profile, all H₂O lines are well fit by a single Gaussian profile (Fig. 2). The line profiles between the $J = 2$ and $J = 3$ H₂O lines do not seem to be significantly different, as shown from the linewidth ratios ranging from 1.26 ± 0.14 to 0.84 ± 0.16 . The magnification from strong lensing is very sensitive to the spatial configuration, in other words, differential lensing, which could lead to different line profiles if the different velocity components of the line are emitted at different spatial positions. Since there is no visible differential effect between their profiles, it is possible that the $J = 2$ and $J = 3$ H₂O lines are from similar spatial regions.

In addition to H₂O, within the 3.6 GHz WideX band, we have also tentatively detected H₂O⁺ emission in 3 sources: NCv1.143, G09v1.97 and G15v2.779 (see Sect. 5).

3.2. Lensing properties

All our sources are strongly gravitationally lensed (except G09v1.124, see Appendix A.11), which increases the line flux densities and allows us to study the H₂O emission in an affordable amount of observation time. However, the complexity of the lensed images complicates the analysis. As mentioned above, most of our lensed images are either unresolved or marginally resolved. Thus, we will not discuss here the spatial distribution of the H₂O and dust emissions through gravitational lensing modelling. However, we should keep in mind that the correction of

Table 4. Observed properties of H₂O emission lines.

Source	H ₂ O line	$\nu_{\text{H}_2\text{O}}$ (GHz)	$S_{\nu}(\text{ct})^{\text{pk}}$ ($\frac{\text{mJy}}{\text{beam}}$)	$S_{\nu}(\text{ct})$ (mJy)	$S_{\text{H}_2\text{O}}^{\text{pk}}$ ($\frac{\text{mJy}}{\text{beam}}$)	$S_{\text{H}_2\text{O}}$ (mJy)	$I_{\text{H}_2\text{O}}^{\text{pk}}$ ($\frac{\text{Jy km s}^{-1}}{\text{beam}}$)	$I_{\text{H}_2\text{O}}$ (Jy km s ⁻¹)	$\Delta V_{\text{H}_2\text{O}}$ (km s ⁻¹)	$\mu L_{\text{H}_2\text{O}}$ (10 ⁸ L _⊙)
G09v1.97	2 ₁₁ -2 ₀₂	162.255	8.9 ± 0.2	9.4 ± 0.2	14.9 ± 2.2	15.0 ± 2.1	3.8 ± 0.4	4.1 ± 0.4	257 ± 27	7.4 ± 0.7
	3 ₂₁ -3 ₁₂	250.947	21.7 ± 0.3	36.1 ± 0.3	7.8 ± 1.9	15.0 ± 2.6	2.4 ± 0.4	3.7 ± 0.4	234 ± 34	10.4 ± 1.0
G12v2.43	2 ₀₂ -1 ₁₁	239.388	16.0 ± 0.3	22.5 ± 0.4	10.8 ± 2.1	17.3 ± 3.1	3.2 ± 0.5	4.8 ± 0.6	262 ± 35	8.8 ± 1.0
	3 ₂₁ -3 ₁₂	281.784	31.5 ± 0.3	36.4 ± 0.3	25.6 ± 3.3	25.0 ± 3.0	4.9 ± 0.4	5.9 ± 0.5	221 ± 20	12.7 ± 1.0
NCv1.143	2 ₁₁ -2 ₀₂	164.741	11.2 ± 0.1	13.3 ± 0.2	17.4 ± 1.3	18.7 ± 1.3	5.6 ± 0.3	5.8 ± 0.3	293 ± 15	10.1 ± 0.5
	3 ₂₁ -3 ₁₂	254.739	34.8 ± 0.5	63.5 ± 0.5	23.9 ± 4.3	32.1 ± 4.1	5.2 ± 0.6	8.0 ± 0.7	233 ± 22	21.3 ± 1.8
NAv1.195	2 ₀₂ -1 ₁₁	250.034	14.0 ± 0.4	25.8 ± 0.4	6.6 ± 2.5	11.6 ± 2.5	2.1 ± 0.6	4.0 ± 0.6	328 ± 51	6.7 ± 1.0
	3 ₂₁ -3 ₁₂	(293.334)	17.2 ± 0.5	41.2 ± 0.5	<4.2	<7.3	<1.5	<2.6	330 ^a	<5.0
NAv1.177	2 ₀₂ -1 ₁₁	261.489	26.5 ± 0.6	35.5 ± 0.6	16.8 ± 4.9	21.2 ± 4.9	4.4 ± 0.9	5.4 ± 0.9	241 ± 41	8.2 ± 1.2
	3 ₂₁ -3 ₁₂	307.856	38.2 ± 0.4	62.0 ± 0.4	14.8 ± 2.6	25.2 ± 3.1	4.6 ± 0.5	7.3 ± 0.6	272 ± 24	12.9 ± 1.1
NBv1.78	2 ₀₂ -1 ₁₁ ^b	240.290	15.4 ± 0.3	36.9 ± 0.4	5.0 ± 1.0	12.3 ± 3.2	2.7 ± 0.3	6.7 ± 1.3	510 ± 90	12.2 ± 2.4
	3 ₂₁ -3 ₁₂	282.863	29.2 ± 0.2	42.6 ± 0.2	8.8 ± 1.0	10.6 ± 1.0	4.8 ± 0.4	6.7 ± 0.5	607 ± 43	14.3 ± 1.0
G09v1.124-W	2 ₁₁ -2 ₀₂	(220.537)	6.42 ± 0.15	7.6 ± 0.2	<1.4	<1.6	<1.2 ^c	<1.4 ^c	850 ^c	<1.3 ^c
G09v1.124-T	2 ₁₁ -2 ₀₂	(220.537)	4.08 ± 0.15	4.9 ± 0.2	<1.7	<2.0	<1.0 ^c	<1.2 ^c	550 ^c	<1.0 ^c
G09v1.40	2 ₁₁ -2 ₀₂	243.182	16.9 ± 0.2	30.6 ± 0.3	17.5 ± 2.0	27.7 ± 1.9	4.9 ± 0.4	8.2 ± 0.4	277 ± 14	5.7 ± 0.3
SDP11	2 ₀₂ -1 ₁₁	354.930	29.2 ± 1.3	52.1 ± 1.3	14.8 ± 8.4	40.3 ± 11.7	5.2 ± 2.0	9.2 ± 2.0	214 ± 41	6.3 ± 1.1
NCv1.268	2 ₁₁ -2 ₀₂	161.013	6.6 ± 0.1	10.0 ± 0.1	5.2 ± 1.1	9.0 ± 1.2	3.7 ± 0.4	7.0 ± 0.7	731 ± 75	12.8 ± 1.2
NAv1.56	2 ₁₁ -2 ₀₂	227.822	14.0 ± 0.6	22.7 ± 0.6	15.8 ± 3.3	23.2 ± 3.0	7.8 ± 1.1	14.6 ± 1.3	593 ± 56	12.0 ± 1.1

Notes. $\nu_{\text{H}_2\text{O}}$ is the observed central frequency of H₂O lines, and the values in brackets are the H₂O line frequencies inferred from the CO redshifts for the undetected sources; $S_{\nu}(\text{ct})^{\text{pk}}$ and $S_{\nu}(\text{ct})$ are the peak and spatially integrated continuum flux density, respectively; $S_{\text{H}_2\text{O}}^{\text{pk}}$ is the peak H₂O line flux and $S_{\text{H}_2\text{O}}$ is the total line flux; $I_{\text{H}_2\text{O}}^{\text{pk}}$ and $I_{\text{H}_2\text{O}}$ are the peak and spatially integrated velocity-integrated flux density of the H₂O lines; $\Delta V_{\text{H}_2\text{O}}$ is the H₂O linewidth; $\mu L_{\text{H}_2\text{O}}$ is the apparent luminosity of the observed H₂O line. ^(a) The linewidth of the undetected H₂O(3₂₁-3₁₂) in NAv1.195 has been set to 330 km s⁻¹ by assuming that the widths of the H₂O(3₂₁-3₁₂) and H₂O(2₀₂-1₁₁) lines are roughly the same; ^(b) the data of para-H₂O(2₀₂-1₁₁) in NBv1.78 is taken from O13; ^(c) the 2 σ upper limits of $I_{\text{H}_2\text{O}}$ are derived by assuming that the H₂O linewidths are similar to those of the CO lines (Ivison et al. 2013).

the magnification is a crucial part of our study. In addition, differential lensing could have a significant influence when comparing H₂O emission with dust and even comparing different transitions of same molecular species (Serjeant 2012), especially for the emission from close to the caustics.

In order to infer the intrinsic properties of our sample, especially $L_{\text{H}_2\text{O}}$ as in our first paper O13, we adopted the lensing magnification factors μ (Table 2) computed from the modelling of the 880 μm SMA images (B13). As shown in the Appendix, the ratio of $S_{\nu}(\text{ct})^{\text{pk}}/S_{\nu}(\text{ct})$ and $S_{\nu}(\text{H}_2\text{O})^{\text{pk}}/S_{\nu}(\text{H}_2\text{O})$ are in good agreement within the uncertainties. Therefore, it is unlikely that the magnification of the 880 μm continuum image and H₂O can be significantly different. However, B13 were unable to provide a lensing model for two of our sources, G12v2.43 and NAv1.177, because their lens deflector is unidentified. This does not affect the modelling of H₂O excitation and the comparison of H₂O and infrared luminosities since the differential lensing effect seems to be insignificant as discussed in Sects. 4 and Appendix A.

4. Discussion

4.1. $L_{\text{H}_2\text{O}} - L_{\text{IR}}$ correlation and $L_{\text{H}_2\text{O}} - L_{\text{IR}}$ ratio

Using the formula given by Solomon et al. (1992), we derive the apparent H₂O luminosities of the sources, $\mu L_{\text{H}_2\text{O}}$ (Table 4), from $I_{\text{H}_2\text{O}}$. For the ortho-H₂O(3₂₁-3₁₂) lines, $\mu L_{\text{H}_2\text{O}}$ varies in the range of 6–22 $\times 10^8 L_{\odot}$, while the $\mu L_{\text{H}_2\text{O}}$ of the $J = 2$ lines are a factor $\sim 1.2-2$ weaker (Table 4) as discussed in Sect. 4.2.

Using the lensing magnification correction (taking the values of μ from B13), we have derived the intrinsic H₂O luminosities (Table 5). The error of each luminosity consists of the uncertainty from both observation and the gravitational lensing modelling. After correcting for lensing, the H₂O luminosities of

our high-redshift galaxies appear to be one order of magnitude higher than those of local ULIRGs, as well as their infrared luminosities (Table 5), so that many of them should rather be considered as HyLIRGs than ULIRGs. Though the ratio of $L_{\text{H}_2\text{O}}/L_{\text{IR}}$ in our high-redshift sample is close to that of local ULIRGs (Y13), with somewhat a statistical increase in the extreme high L_{IR} end (Fig. 3).

As displayed in Fig. 3 for H₂O of the three observed lines, because we have extended the number of detections to 21 H₂O lines, distributed in 16 sources and 3 transitions, we may independently study the correlation of $L_{\text{H}_2\text{O}(2_{02}-1_{11})}$ and $L_{\text{H}_2\text{O}(2_{11}-2_{02})}$ with L_{IR} , while we had approximately combined the two lines in O13.

As found in O13, the correlation is slightly steeper than linear ($L_{\text{H}_2\text{O}} \sim L_{\text{IR}}^{1.2}$). To broaden the dynamical range of this comparison, we also included the local ULIRGs from Y13, together with a few other H₂O detections in high-redshift Hy/ULIRGs, for example, HLSJ 0918 (HLSJ 091828.6+514223) (Combes et al. 2012; Rawle et al. 2014), APM 08279 (van der Werf et al. 2011), SPT 0538 (SPT-S J0538165030.8) (Bothwell et al. 2013) and HFLS3 (Riechers et al. 2013, with the magnification factor from Cooray et al. 2014) (Fig. 3). In the fitting, however, we excluded the sources with heavy AGN contamination (Mrk 231 and APM 08279) or missing flux resolved out by the interferometry (SDP 81). We also excluded the H₂O(3₂₁-3₁₂) line of HFLS3 considering its unusual high $L_{\text{H}_2\text{O}(3_{21}-3_{12})}/L_{\text{IR}}$ ratio as discussed above, that could bias our fitting. We have performed a linear regression in log-log space using the Metropolis-Hastings Markov Chain Monte Carlo (MCMC) algorithm sampler through linmix_err (Kelly 2007) to derived the α in

$$L_{\text{H}_2\text{O}} \propto L_{\text{IR}}^{\alpha}. \quad (1)$$

Table 5. IR luminosity, H₂O line luminosity and global dust temperature of the entire sample.

Source	H ₂ O Transition	L_{IR} ($10^{12} L_{\odot}$)	$L_{\text{H}_2\text{O}(2_{11}-2_{02})}$ ($10^7 L_{\odot}$)	$L_{\text{H}_2\text{O}(2_{02}-1_{11})}$ ($10^7 L_{\odot}$)	$L_{\text{H}_2\text{O}(3_{21}-3_{12})}$ ($10^7 L_{\odot}$)
G09v1.97	2 ₁₁ -2 ₀₂ , 3 ₂₁ -3 ₁₂	22.1 ± 5.9	10.7 ± 1.4	–	15.0 ± 1.9
G12v2.43	2 ₀₂ -1 ₁₁ , 3 ₂₁ -3 ₁₂	83.2 ± 16.6/μ	–	88.4 ± 10.7/μ	143.2 ± 11.5/μ
NCv1.143	2 ₁₁ -2 ₀₂ , 3 ₂₁ -3 ₁₂	11.4 ± 3.1	9.0 ± 1.4	–	18.9 ± 3.3
NAv1.195	2 ₀₂ -1 ₁₁ , 3 ₂₁ -3 ₁₂	18.0 ± 4.6	–	16.4 ± 3.0	<12.3
NAv1.177	2 ₀₂ -1 ₁₁ , 3 ₂₁ -3 ₁₂	55.0 ± 11.0/μ	–	82.0 ± 12.8/μ	129.1 ± 10.8/μ
NBv1.78	2 ₀₂ -1 ₁₁ , 3 ₂₁ -3 ₁₂	8.2 ± 2.2	–	9.4 ± 2.1	11.0 ± 1.5
G09v1.124-W	2 ₁₁ -2 ₀₂	33.1 ± 3.2	<12.9	–	–
G09v1.124-T	2 ₁₁ -2 ₀₂	14.5 ± 1.8	<6.9	–	–
G09v1.40	2 ₁₁ -2 ₀₂	4.2 ± 1.3	3.7 ± 0.9	–	–
SDP11	2 ₀₂ -1 ₁₁	5.7 ± 1.6	–	5.8 ± 1.4	–
NCv1.268	2 ₁₁ -2 ₀₂	8.6 ± 2.3	11.5 ± 1.5	–	–
NAv1.56	2 ₁₁ -2 ₀₂	9.7 ± 2.6	10.3 ± 1.2	–	–
SDP81	2 ₀₂ -1 ₁₁	6.1	–	3.3	–
NAv1.144	2 ₁₁ -2 ₀₂	11	9.7	–	–
SDP9	2 ₁₁ -2 ₀₂	5.2	7.0	–	–
G12v2.30	2 ₀₂ -1 ₁₁	16	–	13	–
SDP17b	2 ₀₂ -1 ₁₁	16	–	20	–
G15v2.779	2 ₁₁ -2 ₀₂	21	26.6	–	–

Notes. L_{IR} is the intrinsic total infrared luminosity (8–1000 μm) taken from B13. The intrinsic H₂O luminosities are inferred from $\mu L_{\text{H}_2\text{O}}$ using μ in B13. The first group of the sources are the ones with both $J = 2$ and $J = 3$ H₂O lines observed, the next group are the sources with only $J = 2$ H₂O observed, and the last group are the previous published sources in O13.

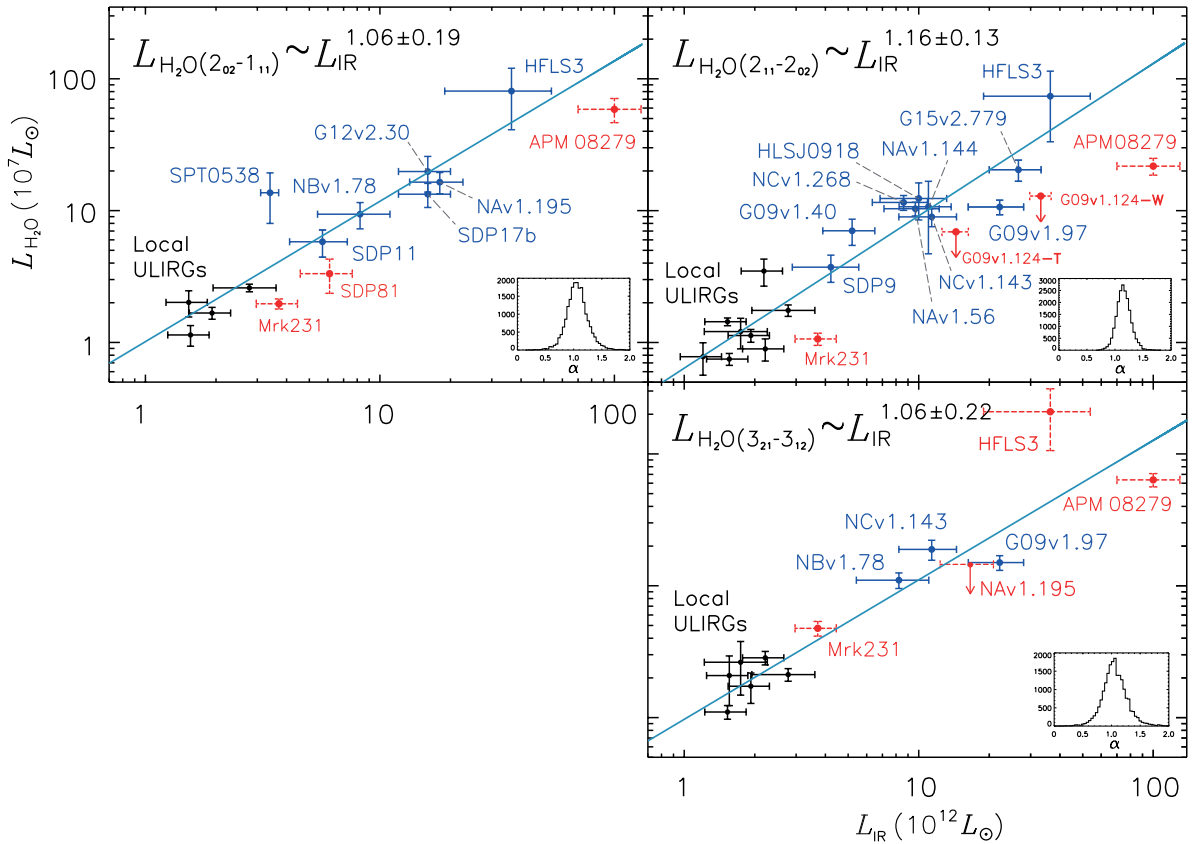


Fig. 3. Correlation between L_{IR} and $L_{\text{H}_2\text{O}}$ in local ULIRGs and high-redshift Hy/ULIRGs. The black points represent local ULIRGs from Y13. The blue points with solid error bars are the *H*-ATLAS source in this work together with some previously published sources. Red points with dashed error bars are excluded from the fit as described in the text. Upper limits are shown in arrows. The light blue lines show the results of the fitting. The insets are the probability density distributions of the fitted slopes α . We find tight correlations between the luminosity of the three H₂O lines and L_{IR} , namely $L_{\text{H}_2\text{O}} \propto L_{\text{IR}}^{1.1-1.2}$.

The fitted parameters are $\alpha = 1.06 \pm 0.19$, 1.16 ± 0.13 and 1.06 ± 0.22 for H₂O line $2_{02}-1_{11}$, $2_{11}-2_{02}$ and $3_{21}-3_{12}$, respectively. Comparing with the local ULIRGs, the high-redshift lensed ones have higher $L_{\text{H}_2\text{O}}/L_{\text{IR}}$ ratios (Table 6). These slopes confirm our first result derived from 7 H₂O detections in (O13). The slight super-linear correlations seem to indicate that far-infrared pumping play an important role in the excitation of the submm H₂O emission. This is unlike the high- J CO lines, which are determined by collisional excitation and follow the linear correlation between the CO line luminosity and L_{IR} from the local to the high-redshift Universe (Liu et al. 2015). As demonstrated in G14, using the far-infrared pumping model, the steeper than linear growth of $L_{\text{H}_2\text{O}}$ with L_{IR} can be the result of an increasing optical depth at $100 \mu\text{m}$ (τ_{100}) with increasing L_{IR} . In local ULIRGs, the ratio of $L_{\text{H}_2\text{O}}/L_{\text{IR}}$ is relatively low while most of them are likely to be optically thin ($\tau_{100} \sim 0.1$, G14). On the other hand, for the high-redshift lensed Hy/ULIRGs with high values of L_{IR} , the continuum optical depth at far-infrared wavelengths is expected to be high (see Sect. 4.2), indicating that the H₂O emission comes from very dense regions of molecular gas that are heavily obscured.

Similar to what we found in the local ULIRGs (Y13), we find again an anti-correlation between T_{d} and $L_{\text{H}_2\text{O}(3_{21}-3_{12})}/L_{\text{IR}}$. The Spearman's rank correlation coefficient for the five H₂O($3_{21}-3_{12}$) detected H -ATLAS sources is $\rho = -0.9$ with a two-sided significance of its deviation from zero, $p = 0.04$. However, after including the non-detection of H₂O($3_{21}-3_{12}$) in NAV1.195, the correlation is much weaker, that is to say, $\rho \lesssim -0.5$ and $p \sim 0.32$. No significant correlation has been found between T_{d} and $L_{\text{H}_2\text{O}(2_{02}-1_{11})}/L_{\text{IR}}$ ($\rho = -0.1$ and $p = 0.87$) nor $L_{\text{H}_2\text{O}(2_{11}-2_{02})}/L_{\text{IR}}$ ($\rho = -0.3$ and $p = 0.45$). As explained in G14, in the optically thick and very warm galaxies, the ratio of $L_{\text{H}_2\text{O}(3_{21}-3_{12})}/L_{\text{IR}}$ is expected to decrease with increasing T_{d} . And this anti-correlation can not be explained by optically thin conditions. However, a larger sample is needed to increase the statistical significance of this anti-correlation.

Although, it is important to stress that the luminosity of H₂O is a complex result of various physical parameters such as dust temperature, gas density, H₂O abundance and H₂O gas distribution relative to the infrared radiation field, etc, it is striking that the correlation between $L_{\text{H}_2\text{O}}$ and L_{IR} stays linear from local young stellar objects (YSOs), in which the H₂O molecules are mainly excited by shocks and collisions, to local ULIRGs (far-infrared pumping dominated), extending ~ 12 orders of magnitudes (San José-García et al. 2016), implying that H₂O indeed traces the SFR proportionally, similarly to the dense gas (Gao & Solomon 2004) in the local infrared bright galaxies. However, for the high-redshift sources, the $L_{\text{H}_2\text{O}}$ emissions are somewhat above the linear correlations which could be explained by their high τ_{100} (or large velocity dispersion). As shown in Table 6, HFLS3, with a $\tau_{100} > 1$ has extremely large ratios of $L_{\text{H}_2\text{O}}/L_{\text{IR}}$ which are stronger than the average of our H -ATLAS sources by factors ~ 2 for the $J = 2$ lines and ~ 4 for $J = 3$ (see Fig. 3). The velocity dispersions of its H₂O lines are $\sim 900 \text{ km s}^{-1}$ (with uncertainties from 18% to 36%), which is larger than all our sources. For optically thick systems, larger velocity dispersion will increase the number of absorbed pumping photons, and boost the ratio of $L_{\text{H}_2\text{O}}/L_{\text{IR}}$ (G14).

For the AGN-dominated sources (i.e. APM08279, G09v1.124-W and Mrk 231) as shown in Fig. 3, most of them (except for the H₂O($3_{21}-3_{12}$) line of Mrk 231) are well below the fitted correlation (see Sect. 4.4). This is consistent with the average value of local strong-AGN-dominated sources. The $J \lesssim 3$ H₂O lines are far-infrared pumped by the 75 and 101 μm

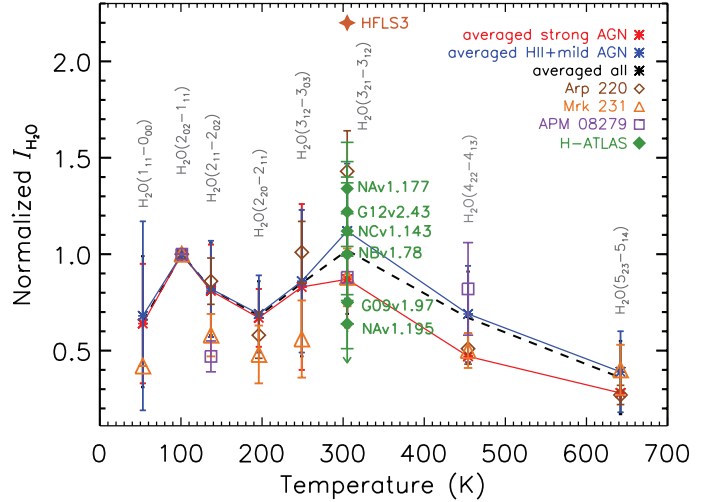


Fig. 4. Velocity-integrated flux density distribution of H₂O normalised to $I_{\text{H}_2\text{O}(2_{02}-1_{11})}$ adapted from Y13. Local averaged values are shown in black dashed line and marks. Among them, AGN-dominated sources are shown in red and star-forming dominated galaxies are shown in blue. Some individual sources are also shown in this plot as indicated by the legend. Green diamonds are the high-redshift lensed Hy/ULIRGs from this work. HFLS3 is a $z = 6.3$ high-redshift galaxy from Riechers et al. (2013).

photons, thus the very warm dust in strong-AGN-dominated sources is likely to contribute more to the L_{IR} than the $J \lesssim 3$ H₂O excitation (see also Y13).

4.2. H₂O excitation

We have detected both $J = 2$ and $J = 3$ H₂O lines in five sources out of six observed for $J = 3$ ortho-H₂O lines. By comparing the line ratios and their strength relative to L_{IR} , we are able to constrain the physical conditions of the molecular content and also the properties of the far-infrared radiation field.

To compare the H₂O excitation with local galaxies, we plot the velocity-integrated flux density of ortho-H₂O($3_{21}-3_{12}$) normalised by that of para-H₂O($2_{02}-1_{11}$) in our source on top of the local and high-redshift H₂O SLEDs (spectral line energy distributions) in Fig. 4. All the six high-redshift sources are located within the range of the local galaxies, with a 1σ dispersion of ~ 0.2 . Yet for the $z = 6.34$ extreme starburst HFLS3, the value of this ratio is at least 1.7 times higher than the average value of local sources (Y13) and those of our lensed high-redshift Hy/ULIRGs at $\gtrsim 3\sigma$ confidence level (Fig. 4). This probably traces different excitation conditions, namely the properties of the dust emission, as it is suggested in G14 that the flux ratio of H₂O($3_{21}-3_{12}$) over H₂O($2_{02}-1_{11}$) is the most direct tracer of the hardness of the far-infrared radiation field which powers the submm H₂O excitation. However, the line ratios are still consistent with the strong saturation limit in the far-infrared pumping model with a $T_{\text{warm}} \gtrsim 65 \text{ K}$. The large scatter of the H₂O line ratio between $3_{21}-3_{12}$ and $2_{02}-1_{11}$ indicates different local H₂O excitation conditions. As far-infrared pumping is dominating the H₂O excitation, the ratio therefore reflects the differences in the far-infrared radiation field, for example, the temperature of the warmer dust that excites the H₂O gas, and the submm continuum opacity. It is now clear that far-infrared pumping is the prevailing excitation mechanism for those submm H₂O lines rather than collisional excitation (G14) in infrared bright galaxies in both the local and high-redshift

Table 6. Ratio between infrared and H₂O luminosity, and the velocity-integrated flux density ratio between different H₂O transitions.

Source	H ₂ O Transition	T_d (K)	$\frac{L_{\text{H}_2\text{O}(2_{11}-2_{02})}}{L_{\text{IR}}}$	$\frac{L_{\text{H}_2\text{O}(2_{02}-1_{11})}}{L_{\text{IR}}}$	$\frac{L_{\text{H}_2\text{O}(3_{21}-3_{12})}}{L_{\text{IR}}}$	$\frac{I_{\text{H}_2\text{O}(3_{21}-3_{12})}}{I_{\text{H}_2\text{O}(2_{11}-2_{02})}}$	$\frac{I_{\text{H}_2\text{O}(3_{21}-3_{12})}}{I_{\text{H}_2\text{O}(2_{02}-1_{11})}}$
			($\times 10^{-6}$)	($\times 10^{-6}$)	($\times 10^{-6}$)		
G09v1.97	2 ₁₁ -2 ₀₂ , 3 ₂₁ -3 ₁₂	44 ± 1	4.8 ± 1.4	–	6.8 ± 2.0	0.9 ± 0.1	(0.8 ± 0.2)
G12v2.43	2 ₀₂ -1 ₁₁ , 3 ₂₁ -3 ₁₂	(39 ± 2)	–	10.6 ± 2.5	15.3 ± 3.3	–	1.2 ± 0.2
NCv1.143	2 ₁₁ -2 ₀₂ , 3 ₂₁ -3 ₁₂	40 ± 1	7.9 ± 2.5	–	16.6 ± 5.4	1.4 ± 0.1	(1.1 ± 0.4)
NAv1.195	2 ₀₂ -1 ₁₁ , 3 ₂₁ -3 ₁₂	36 ± 1	–	9.1 ± 2.9	<6.8	–	<0.7
NAv1.177	2 ₀₂ -1 ₁₁ , 3 ₂₁ -3 ₁₂	(32 ± 1)	–	14.9 ± 3.8	23.5 ± 5.1	–	1.3 ± 0.2
NBv1.78	2 ₀₂ -1 ₁₁ , 3 ₂₁ -3 ₁₂	43 ± 1	–	11.4 ± 4.7	13.4 ± 4.9	–	1.0 ± 0.2
G09v1.124-W	2 ₁₁ -2 ₀₂	40 ± 1	<3.9	–	–	–	–
G09v1.124-T	2 ₁₁ -2 ₀₂	36 ± 1	<4.8	–	–	–	–
G09v1.40	2 ₁₁ -2 ₀₂	36 ± 1	8.8 ± 3.5	–	–	–	–
SDP11	2 ₀₂ -1 ₁₁	41 ± 1	–	10.2 ± 3.8	–	–	–
NCv1.268	2 ₁₁ -2 ₀₂	39 ± 1	13.4 ± 3.9	–	–	–	–
NAv1.56	2 ₁₁ -2 ₀₂	38 ± 1	10.7 ± 3.1	–	–	–	–
SDP81	2 ₀₂ -1 ₁₁	34 ± 1	–	5.4	–	–	–
NAv1.144	2 ₁₁ -2 ₀₂	39 ± 1	9.7	–	–	–	–
SDP9	2 ₁₁ -2 ₀₂	43 ± 1	13.5	–	–	–	–
G12v2.30	2 ₀₂ -1 ₁₁	41 ± 1	–	8.1	–	–	–
SDP17b	2 ₀₂ -1 ₁₁	38 ± 1	–	12.5	–	–	–
G15v2.779	2 ₁₁ -2 ₀₂	41 ± 1	7.7	–	–	–	–
HFLS3	2 ₀₂ -1 ₁₁ , 2 ₁₁ -2 ₀₂ , 3 ₂₁ -3 ₁₂	56 ⁺⁹ ₋₁₂	20.3	22.2	57.3	1.8 ± 0.6	2.2 ± 0.5
APM 08279	2 ₀₂ -1 ₁₁ , 2 ₁₁ -2 ₀₂ , 3 ₂₁ -3 ₁₂	220 ± 30	2.2	6.0	6.4	1.9 ± 0.3	0.9 ± 0.1
HLSJ 0918	2 ₀₂ -1 ₁₁	38 ± 3	11.4	–	–	–	–
SPT 0538	2 ₀₂ -1 ₁₁	39 ± 2	–	40.3	–	–	–
local strong-AGN	2 ₀₂ -1 ₁₁ , 2 ₁₁ -2 ₀₂ , 3 ₂₁ -3 ₁₂	–	3.8	6.4	6.7	1.1 ± 0.4	0.9 ± 0.3
local H II+mild-AGN	2 ₀₂ -1 ₁₁ , 2 ₁₁ -2 ₀₂ , 3 ₂₁ -3 ₁₂	–	5.8	9.2	10.8	1.4 ± 0.4	1.1 ± 0.3

Notes. The luminosity ratios between each H₂O line and their total infrared, and the velocity-integrated flux density ratio of different H₂O transitions. T_d is the cold-dust temperature taken from B13, except for the ones in brackets which are not listed B13, that we infer them from single modified black-body dust SED fitting using the submm/mm photometry data listed in Table 2. All the errors quoted for T_d are significantly underestimated especially because they do not include possible effects of differential lensing and make the assumption of a single-temperature. Line ratios in brackets are derived based on the average velocity-integrated flux density ratios between 2₁₁-2₀₂ and 2₀₂-1₁₁ lines in local infrared galaxies. The local strong-AGN sources are the optically classified AGN-dominated galaxies and the local H II+mild-AGN sources are star-forming-dominated galaxies with possible mild AGN contribution (Y13). The first group of the sources are from this work; and the sources in the second group are the previously published sources in O13; the third group contains the previously published high-redshift detections from other works: HFLS3 (Riechers et al. 2013), APM 08279 (van der Werf et al. 2011), HLSJ 0918 (Combes et al. 2012; Rawle et al. 2014) and SPT 0538 (Bothwell et al. 2013); the last group shows the local averaged values from Y13.

Universe. The main path of far-infrared pumping related to the lines we observed here are 75 and 101 μm as displayed in Fig. 1. Therefore, the different line ratios are highly sensitive to the difference between the monochromatic flux at 75 and 101 μm . We may compare the global T_d measured from far-infrared and submm bands (B13). It includes both cold and warm dust contribution to the dust SED in the rest-frame, which is, however, dominated by cold dust observed in SPIRE bands. It is thus not surprising that we find no strong correlation between T_d and $I_{\text{H}_2\text{O}(3_{21}-3_{12})}/I_{\text{H}_2\text{O}(2_{02}-1_{11})}$ ($r \sim -0.3$). The Rayleigh-Jeans tail of the dust SED is dominated by cooler dust which is associated with extended molecular gas and less connected to the submm H₂O excitation. As suggested in G14, it is indeed the warmer dust (T_{warm} , as shown by the colour legend in Fig. 5) dominating at the Wien side of the dust SED that corresponds to the excitation of submm H₂O lines.

To further explore the physical properties of the H₂O gas content and the far-infrared dust radiation related to the submm H₂O excitation, we need to model how we can infer key parameters, such as the H₂O abundance and those determining the radiation properties, from the observed H₂O lines. For this purpose, we use the far-infrared pumping H₂O excitation model described in G14 to fit the observed $L_{\text{H}_2\text{O}}$ together with the corresponding L_{IR} , and derive the range of continuum optical depth

at 100 μm (τ_{100}), warm dust temperature (T_{warm}), and H₂O column density per unit of velocity interval ($N_{\text{H}_2\text{O}}/\Delta V$) in the five sources with both $J = 2$ and $J = 3$ H₂O emission detections. Due to the insufficient number of the inputs in the model, which are $L_{\text{H}_2\text{O}}$ of the two H₂O lines and L_{IR} , we are only able to perform the modelling by using the pure far-infrared pumping regime. Nevertheless, our observed line ratio between $J = 3$ and $J = 2$ H₂O lines suggests that far-infrared pumping is the dominant excitation mechanism and the contribution from collisional excitation is minor (G14). The $\pm 1\sigma$ contours from χ^2 fitting are shown in Fig. 5 for each warm dust temperature component ($T_{\text{warm}} = 35\text{--}115$ K) per source. It is clear that with two H₂O lines (one $J = 2$ para-H₂O and ortho-H₂O(3₁₂-3₁₂)), we will not be able to well constrain τ_{100} and $N_{\text{H}_2\text{O}}/\Delta V$. As shown in the figure, for $T_{\text{warm}} \lesssim 75$ K, both very low and very high τ_{100} could fit the observation data together with high $N_{\text{H}_2\text{O}}/\Delta V$, while the dust with $T_{\text{warm}} \gtrsim 95$ K are likely favouring high τ_{100} . In the low continuum optical depth part in Fig. 5, as τ_{100} decreases, the model needs to increase the value of $N_{\text{H}_2\text{O}}/\Delta V$ to generate sufficient $L_{\text{H}_2\text{O}}$ to be able to fit the observed $L_{\text{H}_2\text{O}}/L_{\text{IR}}$. This has been observed in some local sources with low τ_{100} , such as in NGC 1068 and NGC 6240. There are no absorption features in the far-infrared but submm H₂O emission have been detected in these sources (G14). The important feature of such sources is

Table 7. Parameters derived from far-infrared pumping model of H₂O.

Source	τ_{100}	T_{warm} (K)	$N_{\text{H}_2\text{O}}/\Delta V$ (cm ⁻² km ⁻¹ s)	$N_{\text{H}_2\text{O}}$ (cm ⁻²)
G09v1.97	1.8	45–55	$(0.3-0.6) \times 10^{15}$	$(0.3-1.1) \times 10^{17}$
G12v2.43	–	45–95	$\geq 0.7 \times 10^{15}$	$\geq 0.7 \times 10^{17}$
NCv1.143	7.2	45–55	$(2.0-20) \times 10^{15}$	$(2.0-60) \times 10^{17}$
NAv1.177	–	45–75	$\geq 1.0 \times 10^{15}$	$\geq 1.0 \times 10^{17}$
NBv1.78	2.5	45–75	$\geq 0.6 \times 10^{15}$	$\geq 0.6 \times 10^{17}$

Notes. τ_{100} is derived from Eq. (2) with errors of a few units (see text), while T_{warm} and $N_{\text{H}_2\text{O}}/\Delta V$ are inferred from the H₂O excitation model. $N_{\text{H}_2\text{O}}$ is calculated by taking a typical ΔV value range of 100–300 km s⁻¹ as suggested by G14.

the lack of $J \geq 4$ H₂O emission lines. Thus, the observation of higher excitation of H₂O will discriminate between the low and high τ_{100} regimes.

Among these five sources, favoured key parameters are somewhat different showing the range of properties we can expect for such sources. Compared with the other four Hy/ULIRGs, G09v1.97 is likely to have the lowest T_{warm} as only dust with $T_{\text{warm}} \sim 45-55$ K can fit well with the data. NCv1.143 and NAv1.177 have slightly different diagnostic which yields higher dust temperature as $T_{\text{warm}} \sim 45-75$ K, while NBv1.78 and G12v2.43 tend to have the highest temperature range, $T_{\text{warm}} \sim 45-95$ K. The values of T_{warm} are consistent with the fact that H₂O traces warm gas. We did not find any significant differences between the ranges of $N_{\text{H}_2\text{O}}/\Delta V$ derived from the modelling for these five sources, although G09v1.97 tends to have lower $N_{\text{H}_2\text{O}}/\Delta V$ (Table 7). As shown in Sect. 4.4, there is no evidence of AGN domination in all our sources, the submm H₂O lines likely trace the warm dust component that connect to the heavily obscured active star-forming activity. However, due to the lack of photometry data on the Wien side of the dust SEDs, we will not be able to compare the observed values of T_{warm} directly with the ones derived from the modelling.

By adopting the 100 μm dust mass absorption coefficient from Draine (2003) of $\kappa_{100} = 27.1 \text{ cm}^2 \text{ g}^{-1}$, we can derive the dust opacity by

$$\tau_{100} = \kappa_{100} \sigma_{\text{dust}} = \kappa_{100} \left(\frac{M_{\text{dust}}}{A} \right) = \kappa_{100} \left(\frac{M_{\text{dust}}}{2\pi r_{\text{half}}^2} \right) \quad (2)$$

where σ_{dust} is the dust mass column density, M_{dust} is the dust mass, A is the projected surface area of the dust continuum source and r_{half} is the half-light radius of the source at submm. As shown in Table 2, among the five sources in Fig. 5, the values of M_{dust} and r_{half} in G09v1.97, NCv1.143 and NBv1.78 have been derived via gravitational lensing (B13). Consequently, the derived approximate dust optical depth at 100 μm in these three sources is $\tau_{100} \approx 1.8, 7.2$ and 2.5 , respectively. One should note that, the large uncertainty in both the κ_{100} and r_{half} of these high-redshift galaxies can bring a factor of few error budget. Nevertheless, by adopting a gas-to-dust mass ratio of $X = 100$ (e.g. Magdis et al. 2011), we can derive the gas depletion time using the following approach,

$$t_{\text{dep}} = \frac{M_{\text{gas}}}{\text{SFR}} = \frac{X\tau_{100}}{\Sigma_{\text{SFR}}\kappa_{100}} \approx 1.8 \times 10^4 \left(\frac{\tau_{100}}{\frac{\Sigma_{\text{SFR}}}{M_{\odot} \text{ yr}^{-1} \text{ kpc}^{-2}}} \right) \text{ Myr} \quad (3)$$

where M_{gas} is the total molecular gas mass and Σ_{SFR} is the surface SFR density derived from L_{IR} using Kennicutt (1998)

calibration by assuming a Salpeter IMF (B13, and Table 2). The implied depletion time scale is $t_{\text{dep}} \approx 35-60$ Myr with errors within a factor of two, in which the dominant uncertainties are from the assumed gas-to-dust mass ratio and the half-light radius. The t_{dep} is consistent with the values derived from dense gas tracers, like HCN in local (U)LIRGs (e.g. Gao & Solomon 2004; García-Burillo et al. 2012). As suggested in G14, the H₂O and HCN likely to be located in the same regions, indicate that the H₂O traces the dense gas as well. Thus, the τ_{100} derived above is likely also tracing the far-infrared radiation source that powers the submm H₂O emissions. B13 also has found that these *H-ATLAS* high-redshift Hy/ULIRGs are expected to be optically thick in the far-infrared. By adding the constrain from τ_{100} above, we can better derive the physical conditions in the sources as shown in Table 7.

From their modelling of local infrared galaxies, G14 find a range of $T_{\text{warm}} = 45-75$ K, $\tau_{100} = 0.05-0.2$ and $N_{\text{H}_2\text{O}}/\Delta V = (0.5-2) \times 10^{15} \text{ cm}^{-2} \text{ km}^{-1} \text{ s}$. The modelling results for our high-redshift sources are consistent with those in local galaxies in terms of T_{warm} and $N_{\text{H}_2\text{O}}/\Delta V$. However, the values of τ_{100} we found at high-redshift are higher than those of the local infrared galaxies. This is consistent with the higher ratio between $L_{\text{H}_2\text{O}}$ and L_{IR} at high-redshift (Y13) which could be explained by higher τ_{100} (G14). However, as demonstrated in an extreme sample, a very large velocity dispersion will also increase the value of $L_{\text{H}_2\text{O}}/L_{\text{IR}}$ within the sources with $\tau_{100} > 1$. Thus, the higher ratio can also be explained by larger velocity dispersion (not including systemic rotations) in the high-redshift Hy/ULIRGs. Compared with local ULIRGs, our *H-ATLAS* sources are much more powerful in terms of their L_{IR} . The dense warm gas regions that H₂O traces are highly obscured with much more powerful far-infrared radiation fields, which possibly are close to the limit of maximum starbursts. Given the values of dust temperature and dust opacity, the radiation pressure $P_{\text{rad}} \sim \tau_{100}\sigma T_{\text{d}}/c$ (σ is Stefan-Boltzmann's constant and c the speed of light) of our sources is about $0.8 \times 10^{-7} \text{ erg cm}^{-3}$. If we assume a H₂ density n_{H_2} of $\sim 10^6 \text{ cm}^{-3}$ and take $T_{\text{k}} \sim 150$ K as suggested in G14, the thermal pressure $P_{\text{th}} \sim n_{\text{H}_2}k_{\text{B}}T_{\text{k}} \sim 2 \times 10^{-8} \text{ erg cm}^{-3}$ (k_{B} is the Boltzmann constant and T_{k} is the gas temperature). Assuming a turbulent velocity dispersion of $\sigma_{\text{v}} \sim 20-50 \text{ km s}^{-1}$ (Bournaud et al. 2015) and taking molecular gas mass density $\rho \sim 2\mu n_{\text{H}_2}$ (2μ is the average molecular mass) would yield for the turbulent pressure $P_{\text{turb}} \sim \rho\sigma_{\text{v}}^2/3 \sim 4 \times 10^{-6} \text{ erg cm}^{-3}$. This might be about an order of magnitude larger than P_{rad} and two orders of magnitude larger than P_{th} , but we should note that all values are very uncertain, especially P_{turb} which could be uncertain by, at maximum, a factor of a few tens. Therefore, keeping in mind their large uncertainties, turbulence and/or radiation are likely to play an important role in limiting the star formation.

4.3. Comparison between H₂O and CO

The velocity-integrated flux density ratio between submm H₂O and submm CO lines with comparable frequencies is 0.02–0.03 in local PDRs such as Orion and M82 (Weiß et al. 2010). But this ratio in local ULIRGs (Y13) and in *H-ATLAS* high-redshift Hy/ULIRGs is much higher, from 0.4 to 1.1 (Tables 3 and 4). The former case is dominated by typical PDRs, where CO lines are much stronger than H₂O lines, while the latter sources shows clearly a different excitation regime, in which H₂O traces the central core of warm, dense and dusty molecular gas which is about a few hundred parsec (González-Alfonso et al. 2010) in diameter in local ULIRGs and highly obscured even at far-infrared.

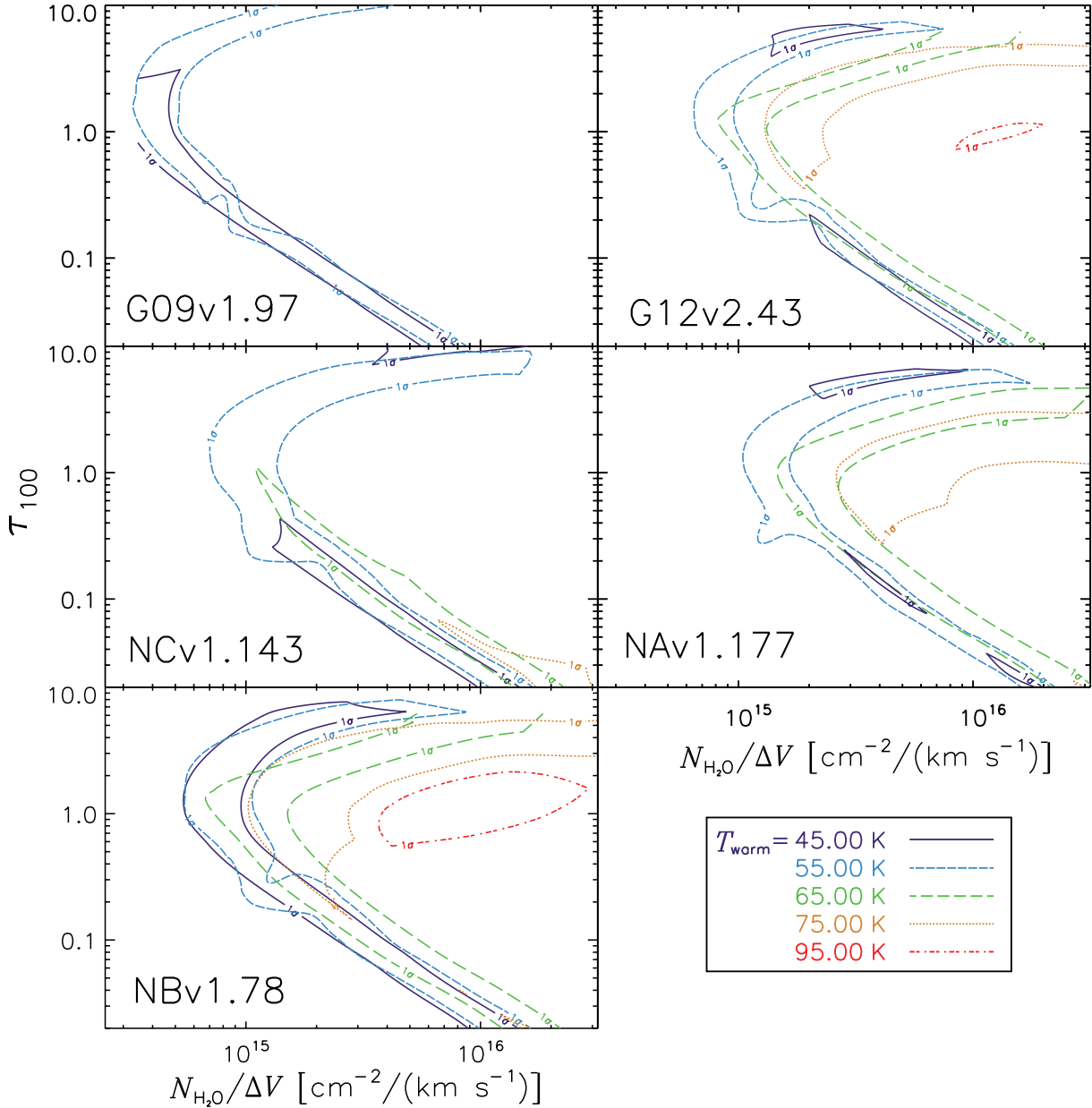


Fig. 5. Parameter space distribution of the H₂O far-infrared pumping excitation modelling with observed para-H₂O 2₀₂–1₁₁ or 2₁₁–2₀₂ and ortho-H₂O(3₂₁–3₁₂) in each panel. $\pm 1\sigma$ contours are shown for each plot. Different colours with different line styles represent different temperature components of the warm dust as shown in the legend. The explored warm dust temperature range is from 35 K to 115 K. The temperature contours that are unable to fit the data are not shown in this figure. From the figure, we are able to constrain the τ_{100} , T_{warm} and $N_{\text{H}_2\text{O}}/\Delta V$ for the five sources. However, there are strong degeneracies. Thus, we need additional information, such as the velocity-integrated flux densities of $J \geq 4$ H₂O lines, to better constrain the physical parameters.

Generally, submm H₂O lines are dominated by far-infrared pumping that traces strong far-infrared dust continuum emission, which is different from the regime of molecular gas traced by collisional excited CO lines. In the active star-forming nucleus of the infrared-bright galaxies, the far-infrared pumped H₂O is expected to trace directly the far-infrared radiation generated by the intense star formation, which can be well correlated with the high- J CO lines (Liu et al. 2015). Thus there is likely to be a correlation between the submm H₂O and CO emission. From our previous observations, most of the H₂O and CO line profiles are quite similar from the same source in our high-redshift lensed Hy/ULIRGs sample (Fig. 2 of O13). In the present work, we again find similar profiles between H₂O and CO in terms of their FWHM with an extended sample (Table 3 and 4). In both

cases the FWHMs of H₂O and CO are generally equal within typical 1.5σ errors (see special discussion for each source in Appendix A).

As the gravitational lensing magnification factor is sensitive to spatial alignment, the similar line profiles could thus suggest similar spatial distributions of the two gas tracers. However, there are a few exceptional sources, such as SDP 81 (ALMA Partnership, Vlahakis et al. 2015) and HLSJ0918 (Rawle et al. 2014). In both cases, the H₂O lines are lacking the blue velocity component found in the CO line profiles. Quite different from the rest sources, in SDP 81 and HLSJ0918, the CO line profiles are complicated with multiple velocity components. Moreover, the velocity-integrated flux density ratios between these CO components may vary following

the excitation level (different J_{up}). Thus, it is important to analyse the relation between different CO excitation components (from low- J to high- J) and H₂O. Also, high resolution observation is needed to resolve the multiple spatial gas components and compare the CO emission with H₂O and dust continuum emission within each component.

4.4. AGN content

It is still not clear how a strong AGN could affect the excitation of submm H₂O in both local ULIRGs and high-redshift Hy/ULIRGs. Nevertheless, there are some individual studies addressing this question. For example, in APM08279, van der Werf et al. (2011) found that AGN is the main power source that excites the high- J H₂O lines and also enriches the gas-phase H₂O abundance. Similar conclusion has also been drawn by González-Alfonso et al. (2010) that in Mrk 231 the AGN accounts for at least 50% contribution to the far-infrared radiation that excites H₂O. From the systematic study of local sources (Y13), slightly lower values of $L_{\text{H}_2\text{O}}/L_{\text{IR}}$ are found in strong-AGN-dominated sources. In the present work, the decreasing ratio of $L_{\text{H}_2\text{O}}/L_{\text{IR}}$ with AGN is clearly shown in Fig. 3 where Mrk 231, G09v1.124-W and APM 08279 are below the correlation by factors between 2 and 5 with less than 30% uncertainties (except the H₂O(3₂₁-1₂₃) line of Mrk 231).

In the far-infrared pumping regime, the buried AGN will provide a strong far-infrared radiation source that will pump the H₂O lines. However, the very warm dust powered by the AGN will increase the value of L_{IR} faster than the number of $\geq 75 \mu\text{m}$ photons that is dominating the excitation of $J \leq 3$ H₂O lines (e.g. Kirkpatrick et al. 2015). If we assume that the strength of the H₂O emission is proportional to the number of pumping photons, then in the strong-AGN-dominated sources, the ratio of $L_{\text{H}_2\text{O}}/L_{\text{IR}}$ will decrease since much warmer dust is present. Moreover, strong radiation from the AGN could dissociate the H₂O molecules.

To evaluate the AGN contribution to the *H-ATLAS* sources, we extracted the 1.4 GHz radio flux from the FIRST radio survey (Becker et al. 1995) listed in Table 2. By comparing the far-infrared and radio emission using the q parameter (Condon 1992), $q \equiv \log(L_{\text{FIR}}/3.75 \times 10^{12} \text{ W}) - \log(L_{1.4 \text{ GHz}}/1 \text{ W Hz}^{-1})$, we derive values of q from 1.9 to 2.5 in our sources. These values follow the value 2.3 ± 0.1 found by Yun et al. (2001) for non strong-radio AGN. This may suggest that there is also no significant indication of a high radio contribution from AGN. This is also confirmed by the Wide-field Infrared Survey Explorer (WISE, Wright et al. 2010), which does not detect our sources at $12 \mu\text{m}$ and $22 \mu\text{m}$. However, rest-frame optical spectral observations show that G09v1.124-W is rather a powerful AGN (Oteo et al., in prep.), which is the only identified AGN-dominated source in our sample.

5. Detection of H₂O⁺ emission lines

H₂O can be formed through both solid-state and gas-phase chemical reactions (van Dishoeck et al. 2013). On dust-grain mantles, surface chemistry dominates the formation of H₂O molecules. Then they can be released into the ISM gas through sublimation. In the gas phase, H₂O can be produced through two routes: the neutral-neutral reaction, usually related to shocks, creates H₂O via $\text{O} + \text{H}_2 \rightarrow \text{OH} + \text{H}$; $\text{OH} + \text{H}_2 \rightarrow \text{H}_2\text{O} + \text{H}$ at high temperature ($\geq 300 \text{ K}$). At lower temperature ($\leq 100 \text{ K}$), the ion-neutral reactions in photon-dominated regions (PDRs), cosmic-ray-dominated regions and X-ray-dominated regions

(e.g. Meijerink & Spaans 2005) generate H₂O from O, H⁺, H₃⁺ and H₂, with intermediates such as O⁺, OH⁺, H₂O⁺ and H₃O⁺, and finally $\text{H}_3\text{O}^+ + \text{e} \rightarrow \text{H}_2\text{O} + \text{H}$. However, classical PDRs are not likely linked to these highly excited submm H₂O emissions (Y13). Therefore, H₂O⁺ lines are important for distinguishing between shock- or ion-chemistry origin for H₂O in the early Universe, indicating the type of physical regions in these galaxies: shock-dominated regions, cosmic-ray-dominated regions or X-ray-dominated regions. Indeed, they can be among the most direct tracers of the cosmic-ray or/and X-ray ionization rate (e.g. Gérin et al. 2010; Neufeld et al. 2010; González-Alfonso et al. 2013) of the ISM, which regulates the chemistry and influences many key parameters, for example, X-factor (Bell et al. 2007) that connects the CO luminosity to the H₂ mass. Moreover, the significant detections of H₂O⁺ emission in high-redshift Hy/ULIRGs could help us understanding H₂O formation in the early Universe.

When observing our sources with redshift $z \gtrsim 3.3$, it is possible to cover all the following lines with the NOEMA WideX bandwidth: para-H₂O(2₁₁-2₀₂) at 752 GHz and four ortho-H₂O⁺ lines (two intertwined fine structure doublets of two different lines whose frequencies almost coincide by chance): 2₀₂-1₁₁ (5/2-3/2) at 742.1 GHz, 2₁₁-2₀₂ (5/2-3/2) at 742.3 GHz, 2₀₂-1₁₁ (3/2-3/2) at 746.3 GHz and 2₁₁-2₀₂ (5/2-5/2) at 746.5 GHz, in the 3.6 GHz band simultaneously (the rest-frame frequencies are taken from the CDMS catalogue: <http://www.astro.uni-koeln.de/cdms>, see energy level diagram of H₂O⁺ in Fig. 1 and the full spectra in Fig. 6). Additionally, within this range, we can also cover the H₂¹⁸O(2₁₁-2₀₂) line at 745.3 GHz. There are three sources of our sample that have been observed in such a frequency setup: NCv1.143, NCv1.268 and G09v1.97. We have also included the source G15v2.779 from our previous observation (O13), in which we have covered both H₂O(2₁₁-2₀₂) at 752 GHz and H₂O⁺ lines around 746 GHz. We have detected both main lines of H₂O⁺ in NCv1.143, and tentatively detected one line in G09v1.97 and G15v2.779 (Fig. 6). For NCv1.268, due to the large noise level and the complex line profile, we were not able to really identify any H₂O⁺ line detection.

As shown in Fig. 6, in NCv1.143, the dominant H₂O⁺ fine structure lines 2₁₁-2₀₂ (5/2-5/2) at 746.5 GHz and 2₀₂-1₁₁ (5/2-3/2) at 742.1 GHz are well detected. The velocity-integrated flux densities of the two lines from a two-Gaussian fit are 1.9 ± 0.3 and $1.6 \pm 0.2 \text{ Jy km s}^{-1}$, respectively. These are the approximate velocity-integrated flux densities of the dominant H₂O⁺ lines 2₁₁-2₀₂ (5/2-5/2) and 2₀₂-1₁₁ (5/2-3/2) if neglecting the minor contributions from H₂O⁺ lines 2₀₂-1₁₁ (3/2-3/2) at 746.2 GHz and 2₁₁-2₀₂ (5/2-3/2) at 742.3 GHz. However, the H₂O⁺ line profile at 746.5 GHz is slightly wider than the H₂O line (Fig. 6), probably due to a contribution from the fairly weak fine structure line H₂O⁺(2₀₂-1₁₁) (3/2-3/2) at 746.3 GHz. The ratio between total velocity-integrated flux density of the H₂O⁺ lines and H₂O(2₁₁-2₀₂) is 0.60 ± 0.07 (roughly 0.3 for each dominant H₂O⁺ line), being consistent with the average value from the local infrared galaxies (Y13)³. In order to derive the velocity-integrated flux density of each fine structure doublets around 742 and 746 GHz, we have also performed a four-Gaussian fit with fixed line positions (equal to $v_{\text{rest}}/(1+z)$) and linewidth (equals to that of H₂O(2₁₁-2₀₂)). We find the velocity-integrated

³ As suggested by González-Alfonso et al. (2013), due to the very limited spectral resolution of *Herschel*/SPIRE FTS, the ortho-H₂O⁺(2₀₂-1₁₁) (3/2-3/2) line at 746.5 GHz quoted in Y13 is actually dominated by ortho-H₂O⁺(2₁₁-2₀₂) (5/2-5/2), considering their likely excitation and relative strength.

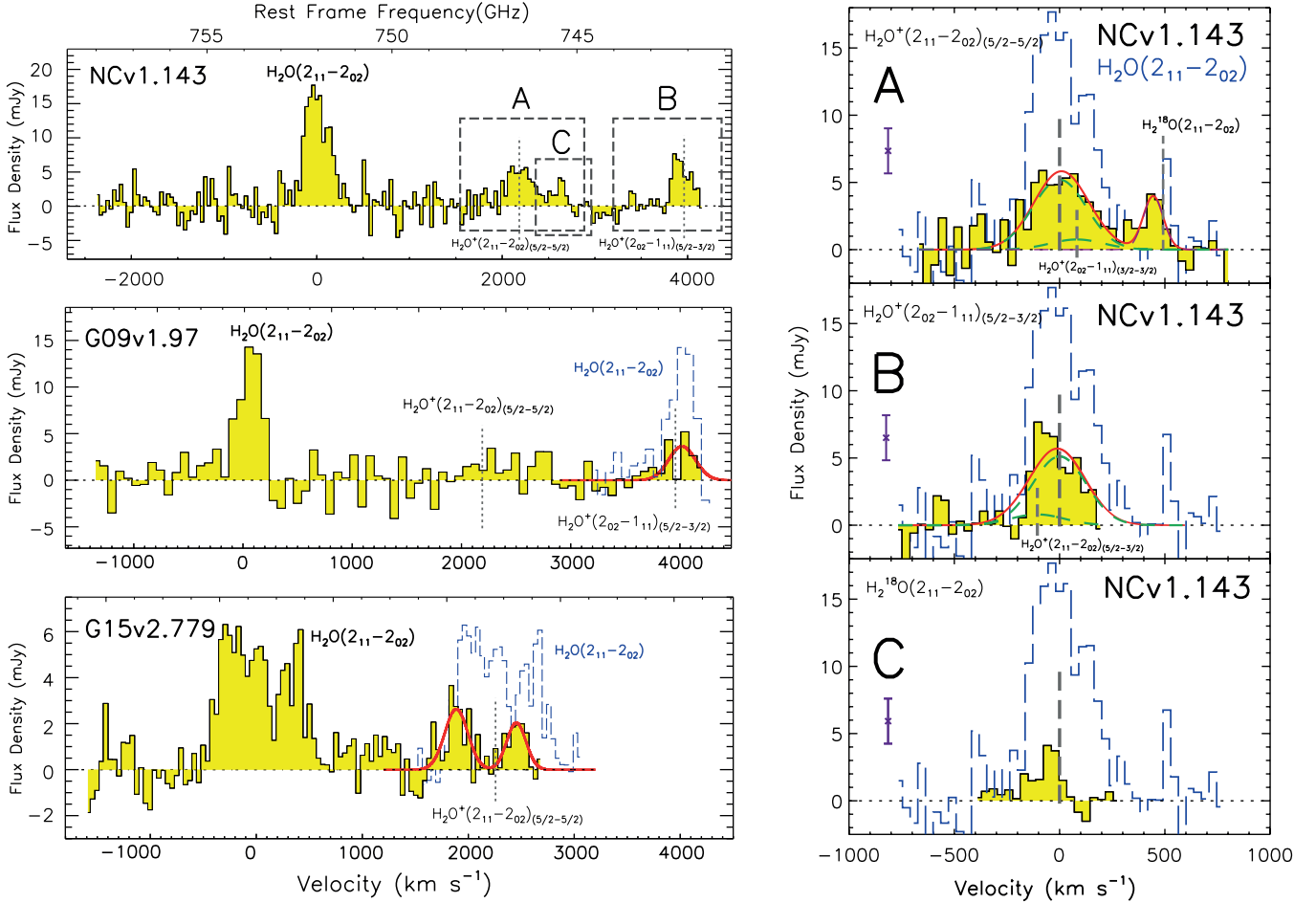


Fig. 6. *Left panel:* from top to bottom are the full NOEMA spectrum at $\nu_{\text{rest}} \sim 750$ GHz of NCv1.143, G09v1.97 and G15v2.779, respectively. The reference frequency is the redshifted frequency of the line $\text{H}_2\text{O}(2_{11}-2_{02})$. The frequencies of the main $\text{H}_2\text{O}^+(2_{11}-2_{02})_{(5/2-5/2)}$ and $\text{H}_2\text{O}^+(2_{02}-1_{11})_{(5/2-3/2)}$ lines are indicated by grey vertical dashed lines. The three dashed squares in the spectrum of NCv1.143 show the position of each zoom-in spectrum of the H_2O^+ (or the H_2^{18}O) as displayed in the right panel indicated by the A, B or C. The superposed blue dashed histograms represents the spectra of $\text{H}_2\text{O}(2_{11}-2_{02})$ centred at the frequencies of the H_2O^+ lines. Note that, in many cases, the observed frequency ranges (yellow histograms) do not include the full expected profiles for the H_2O^+ lines. The red curve represents the Gaussian fitting to the spectra. We have detected both H_2O^+ lines in NCv1.143, and tentatively detected $\text{H}_2\text{O}^+(2_{02}-1_{11})_{(5/2-3/2)}$ in G09v1.97 and $\text{H}_2\text{O}^+(2_{11}-2_{02})_{(5/2-5/2)}$ in G15v2.779. *Right panel:* from top to bottom are the spectra dominated by lines of $\text{H}_2\text{O}^+(2_{11}-2_{02})_{(5/2-5/2)}$, $\text{H}_2\text{O}^+(2_{02}-1_{11})_{(3/2-3/2)}$ and $\text{H}_2^{18}\text{O}(2_{11}-2_{02})$, respectively, displayed as the filled yellow histograms. The reference frequency is the frequency of each of these lines. Weaker $\text{H}_2\text{O}^+(2_{02}-1_{11})_{(3/2-3/2)}$ and $\text{H}_2\text{O}^+(2_{11}-2_{02})_{(5/2-3/2)}$ components are indicated by additional grey vertical dashed lines. The superposed blue dashed histograms represent the spectra of para- $\text{H}_2\text{O}(2_{11}-2_{02})$ in NCv1.143 centred at each line frequency. The red curve represents the Gaussian fitting to the spectra, and the green dashed curves are the decomposed Gaussian profiles for each fine structure line. The violet error bar indicates the $\pm 1\sigma$ uncertainties of the spectrum.

flux densities of the two fine structure lines of $\text{H}_2\text{O}^+(2_{11}-2_{02})$ are 1.6 ± 0.5 and $0.3 \pm 0.4 \text{ Jy/km s}^{-1}$, while they are 1.6 ± 0.4 and $0.2 \pm 0.5 \text{ Jy/km s}^{-1}$ for the two fine structure lines of $\text{H}_2\text{O}^+(2_{02}-1_{11})$ (Table 8). We should note that these fitting results have much larger uncertainties due to the blending. Nevertheless, they are consistent with the earlier fitting results without de-blending. The similarity of the velocity-integrated flux densities between the $\text{H}_2\text{O}^+(2_{02}-1_{11})$ and $\text{H}_2\text{O}^+(2_{11}-2_{02})$ lines is in good agreement with the regime of far-infrared pumping as submm H_2O (González-Alfonso et al. 2013). As a first approximation, if these H_2O^+ lines are optically thin and we ignore the additional pumping from ortho- $\text{H}_2\text{O}^+ 2_{02}$ to ortho- $\text{H}_2\text{O}^+ J = 3$ energy levels, the statistical equilibrium applied to energy level $2_{02 5/2}$ implies that all population arriving per second at $2_{02 5/2}$ should be equal to all population leaving the level per second.

After subtracting the Gaussian profiles of all the H_2O^+ lines in the spectrum, we find a 3σ residual in terms of the

velocity-integrated flux density around 745.3 GHz ($I = 0.6 \pm 0.2 \text{ Jy km s}^{-1}$, see Fig. 6). This could be a tentative detection of the $\text{H}_2^{18}\text{O}(2_{11}-2_{02})$ line at 745.320 GHz. The velocity-integrated flux density ratio of $\text{H}_2^{18}\text{O}(2_{11}-2_{02})$ over $\text{H}_2\text{O}(2_{11}-2_{02})$ in NCv1.143 would hence be ~ 0.1 . If this tentative detection was confirmed, it would show that ALMA could easily study such lines. But sophisticated models will be needed to infer isotope ratios.

The spectrum of the $\text{H}_2\text{O}(2_{11}-2_{02})$ line in G09v1.97 covers both the two main H_2O^+ fine structure lines (Fig. 6). However, due to the limited sensitivity, we have only tentatively detected the $\text{H}_2\text{O}^+(2_{02}-1_{11})_{(5/2-3/2)}$ line just above 3σ (neglecting the minor contribution from $\text{H}_2\text{O}^+(2_{11}-2_{02})_{(5/2-3/2)}$), and the velocity-integrated flux density is $1.4 \pm 0.4 \text{ Jy km s}^{-1}$ using a single Gaussian fit. We did not perform any line de-blending for this source considering the data quality. The H_2O^+ line profile is in good agreement with that of the H_2O (blue dashed histogram

Table 8. Observed ortho-H₂O⁺ fine structure line parameters of the high-redshift *H*-ATLAS lensed HyLIRGs.

Source	H ₂ O ⁺ transition	ν_{rest} (GHz)	ν_{line} (GHz)	$I_{\text{H}_2\text{O}^+}$ (Jy km s ⁻¹)
NCv1.143	2 ₁₁ -2 ₀₂ (5/2-5/2)	746.5	163.53	1.6 ± 0.5
	2 ₀₂ -1 ₁₁ (3/2-3/2)	746.3	163.48	0.2 ± 0.5
	2 ₁₁ -2 ₀₂ (5/2-3/2)	742.3	162.61	0.3 ± 0.4
	2 ₀₂ -1 ₁₁ (5/2-3/2)	742.1	162.56	1.6 ± 0.4
G09v1.97	2 ₀₂ -1 ₁₁ (5/2-3/2)	742.1	160.14	1.4 ± 0.4
G15v2.779	2 ₁₁ -2 ₀₂ (5/2-5/2)	746.5	142.35	1.2 ± 0.3

Notes. The H₂O⁺ (2₀₂-1₁₁)_(5/2-3/2) line in G09v1.97 is blended by (2₁₁-2₀₂)_(5/2-3/2), and H₂O⁺ (2₁₁-2₀₂)_(5/2-5/2) line in G15v2.779 is blended by (2₀₂-1₁₁)_(3/2-3/2). However, the contribution from the latter in each case is small, likely less than 20% as shown in the case of the H₂O⁺ lines in NCv1.143. Note that the quoted uncertainties do not include the missing parts of the spectra cut by the limited observed bandwidth (Fig. 6).

in Fig. 7). The velocity-integrated flux density of the undetected H₂O⁺(2₁₁-2₀₂)_(5/2-5/2) line could also be close to this value as discussed in the case of NCv1.143, yet somewhat lower and not detected in this source. More sensitive observation should be conducted to further derive robust line parameters.

We have also tentatively detected the H₂O⁺(2₁₁-2₀₂)_(5/2-5/2) line in G15v2.779 ($S/N \sim 4$ by neglecting the minor contribution from the H₂O⁺(2₀₂-1₁₁)_(3/2-3/2) line). The line profile is in good agreement with that of H₂O(2₁₁-2₀₂) (blue dashed histogram in Fig. 6). The velocity-integrated flux density derived from a double-peak Gaussian fit is 1.2 ± 0.3 Jy km s⁻¹ (we did not perform any line de-blending for the H₂O⁺ doublet considering the spectral noise level). There could be a minor contribution from the H₂O⁺(2₀₂-1₁₁)_(3/2-3/2) line to the velocity-integrated flux density. However, such a contribution is likely to be negligible as in the case of NCv1.143. The contribution is also within the uncertainty of the velocity-integrated flux density. Nevertheless, the position of H₂O⁺ has a small blue-shift compared with H₂O, but note that the blue part of the line is cut by the limited observed bandwidth (yellow histogram).

After including the local detections of H₂O⁺ lines from Y13 (Table B.1), we find a tight linear correlation between the luminosity of H₂O and the two main lines of H₂O⁺ (slopes equal to 1.03 ± 0.06 and 0.91 ± 0.07 , see Fig. 7). However, one should keep in mind that, because the local measurement done by *Herschel* SPIRE/FTS (Naylor et al. 2010) has rather low spectral resolution, neither H₂O⁺(2₁₁-2₀₂)_(5/2-3/2) and H₂O⁺(2₀₂-1₁₁)_(5/2-3/2), nor H₂O⁺(2₁₁-2₀₂)_(5/2-5/2) and H₂O⁺(2₀₂-1₁₁)_(3/2-3/2) can be spectroscopically resolved. In the correlation plot (Fig. 7) and Table B.1, we use the total luminosity from the 742 GHz and 746 GHz lines, by assuming the contribution from H₂O⁺(2₁₁-2₀₂)_(5/2-3/2) and H₂O⁺(2₀₂-1₁₁)_(3/2-3/2) to the velocity-integrated flux density of the line at 742 GHz and 746 GHz is small ($\sim 18\%$) and does not vary significantly between different sources. Hence, the velocity-integrated flux density ratio between each of the two dominant H₂O⁺ fine structure lines and H₂O in NCv1.143, G15v2.779 and G09v1.97 is ~ 0.3 (uncertainties are less than 30%), which is consistent with local galaxies as shown in the figure. This ratio is much larger than the abundance ratio of H₂O⁺/H₂O ~ 0.05 found in Arp 220, an analogue of high-redshift ULIRGs (Rangwala et al. 2011).

As discussed above, the AGN contribution to the excitation of the submm lines of most of our sources appears to be minor. Thus, the formation of H₂O⁺ is likely dominated by cosmic-ray ionization, rather than X-ray ionization. Given the

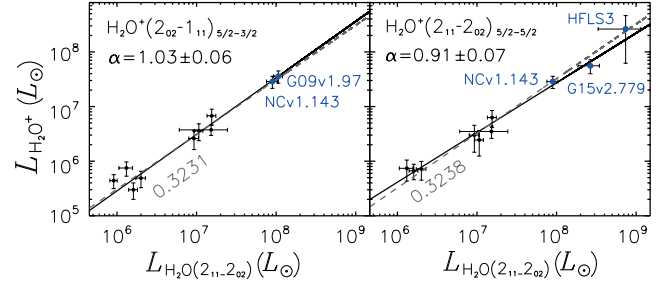


Fig. 7. Correlation between the luminosity of $J = 2$ ortho-H₂O⁺ and para-H₂O(2₁₁-2₀₂). The fitted function is $L_{\text{H}_2\text{O}^+} \propto L_{\text{H}_2\text{O}}^\alpha$. We found a very good correlation between $L_{\text{H}_2\text{O}^+}$ and $L_{\text{H}_2\text{O}}$ with a slope close to one. Black points are from the local ULIRGs as listed in Table B.1. Dark blue ones are high-redshift starbursts from this work. Black solid lines indicate the χ^2 fitting results while the grey dashed lines and the grey annotations represent the average ratio between the $L_{\text{H}_2\text{O}^+}$ and $L_{\text{H}_2\text{O}}$.

average luminosity ratio of H₂O⁺/H₂O $\sim 0.3 \pm 0.1$ shown in Fig. 7, Meijerink et al. (2011) suggest a cosmic-ray ionization rate of 10^{-14} – 10^{-13} s⁻¹. Such high cosmic-ray ionization rates drive the ambient ionization degree of the ISM to 10^{-3} – 10^{-2} , rather than the canonical 10^{-4} . Therefore, in the gas phase, an ion-neutral route likely dominates the formation of H₂O. However, H₂O can also be enriched through the water-ice sublimation that releases H₂O into the gas-phase ISM. As the upper part, ~ 90 K, of the possible range for T_{warm} is close to the sublimation temperature of water ice. Hence, the high H₂O abundance ($N_{\text{H}_2\text{O}} \gtrsim 0.3 \times 10^{17}$ cm⁻², see Sect. 4.2) observed is likely to be the result of ion chemistry dominated by high cosmic-ray ionization and/or perhaps water ice desorption. However, further observation of H₂O⁺ lines of different transitions and a larger sample is needed to constrain the contribution to H₂O formation from neutral-neutral reactions dominated by shocks.

6. Conclusions

In this paper, we report a survey of submm H₂O emission at redshift $z \sim 2-4$, by observing a higher excited ortho-H₂O(3₂₁-3₁₂) in 6 sources and several complementary $J = 2$ para-H₂O emission lines in the warm dense cores of 11 high-redshift lensed extreme starburst galaxies (Hy/ULIRGs) discovered by *H*-ATLAS. So far, we have detected a H₂O line in most of our observations of a total sample of 17 high-redshift lensed galaxies, in other words, we have detected both $J = 2$ para-H₂O and $J = 3$ ortho-H₂O lines in five, and in ten other sources only one $J = 2$ para-H₂O line. In these high-redshift Hy/ULIRGs, H₂O is the second strongest molecular emitter after CO within the submm band, as in local ULIRGs. The spatially integrated H₂O emission lines have a velocity-integrated flux density ranging from 4 to 15 Jy km s⁻¹, which yields the apparent H₂O emission luminosity, $\mu L_{\text{H}_2\text{O}}$ ranging from ~ 6 – $22 \times 10^8 L_\odot$. After correction for gravitation lensing magnification, we obtained the intrinsic $L_{\text{H}_2\text{O}}$ for para-H₂O lines 2₀₂-1₁₁, 2₁₁-2₀₂ and ortho-H₂O(3₂₁-3₁₂). The luminosities of the three H₂O lines increase with L_{IR} as $L_{\text{H}_2\text{O}} \propto L_{\text{IR}}^{1.1-1.2}$. This correlation indicates the importance of far-infrared pumping as a dominant mechanism of H₂O excitation. Comparing with $J = 3$ to $J = 6$ CO lines, the linewidths between H₂O and CO are similar, and the velocity-integrated flux densities of H₂O and CO are comparable. The similarity in line profiles suggests that these two molecular species possibly trace similar intense star-forming regions.

Using the far-infrared pumping model, we have analysed the ratios between $J = 2$ and $J = 3$ H₂O lines and $L_{\text{H}_2\text{O}}/L_{\text{IR}}$ in 5 sources with both J H₂O lines detected. We have derived the

ranges of the warm dust temperature (T_{warm}), the H_2O column density per unit velocity interval ($N_{\text{H}_2\text{O}}/\Delta V$) and the optical depth at $100\ \mu\text{m}$ (τ_{100}). Although there are strong degeneracies, these modelling efforts confirm that, similar to those of local ULIRGs, these submm H_2O emissions in high-redshift Hy/ULIRGs trace the warm dense gas that is tightly correlated with the massive star forming activity. While the values of T_{warm} and $N_{\text{H}_2\text{O}}$ (by assuming that they have similar velocity dispersion ΔV) are similar to the local ones, τ_{100} in the high-redshift Hy/ULIRGs is likely to be greater than 1 (optically thick), which is larger than $\tau_{100} = 0.05\text{--}0.2$ found in the local infrared galaxies. However, we notice that the parameter space is still not well constrained in our sources through H_2O excitation modelling. Due to the limited excitation levels of the detected H_2O lines, we are only able to perform the modelling with pure far-infrared pumping.

The detection of relatively strong H_2O^+ lines opens the possibility to help understanding the formation of such large amount of H_2O . In these high-redshift Hy/ULIRGs, the H_2O formation is likely to be dominated by ion-neutral reactions powered by cosmic-ray-dominated regions. The velocity-integrated flux density ratio between H_2O^+ and H_2O ($I_{\text{H}_2\text{O}^+}/I_{\text{H}_2\text{O}} \sim 0.3$), is remarkably constant from low to high-redshift, reflecting similar conditions in Hy/ULIRGs. However, more observations of H_2O^+ emission/absorption and also OH^+ lines are needed to further constrain the physical parameters of the cosmic-ray-dominated regions and the ionization rate in those regions.

We have demonstrated that the submm H_2O emission lines are strong and easily detectable with NOEMA. Being a unique diagnostic, the H_2O emission offers us a new approach to constrain the physical conditions in the intense and heavily obscured star-forming regions dominated by far-infrared radiation at high-redshift. Follow-up observations of other gas tracers, for instance, CO, HCN, H_2O^+ and OH^+ using the NOEMA, IRAM 30m and JVLA will complement the H_2O diagnostic of the structure of different components, dominant physical processes, star formation and chemistry in high-redshift Hy/ULIRGs.

With unprecedented spatial resolution and sensitivity, the image from the ALMA long baseline campaign observation of SDP81 (also known as *H-ATLAS* J090311.6+003906, [ALMA Partnership, Vlahakis et al. 2015](#); [Dye et al. 2015](#); [Rybak et al. 2015](#)), shows the resolved structure of the dust, CO and H_2O emission in the $z = 3$ ULIRG. With careful reconstruction of the source plane images, ALMA will help to resolve the submm H_2O emission in high-redshift galaxies into the scale of giant molecular clouds, and provide a fresh view of detailed physics and chemistry in the early Universe.

Acknowledgements. We thank our referee for the very detail comments and suggestions which have improved the paper. This work was based on observations carried out with the IRAM Interferometer NOEMA, supported by INSU/CNRS (France), MPG (Germany), and IGN (Spain). The authors are grateful to the IRAM staff for their support. C.Y. thanks Claudia Marka and Nicolas Billot for their help of the IRAM 30 m/EMIR observation. C.Y. also thanks Zhi-Yu Zhang and Iván Oteo for insightful discussions. C.Y., A.O. and Y.G. acknowledge support by NSF grants #11311130491, #11420101002 and CAS Pilot B program #XDB09000000. C.Y. and Y.G. also acknowledge support by NSF grants #11173059. C.Y., A.O., A.B. and Y.G. acknowledge support from the Sino-French LIA-Origin joint exchange program. E.G.-A. is a Research Associate at the Harvard-Smithsonian Center for Astrophysics, and thanks the Spanish Ministerio de Economía y Competitividad for support under projects FIS2012-39162-C06-01 and ESP2015-65597-C4-1-R, and NASA grant ADAP NNX15AE56G. RJ acknowledges support from ERC in the form of the Advanced Investigator Programme, 321302, COSMICISM. US participants in *H-ATLAS* acknowledge support from NASA through a contract from JPL. Italian participants in *H-ATLAS* acknowledge a financial contribution from the agreement ASI-INAF I/009/10/0. SPIRE has been developed by a consortium of institutes led by Cardiff Univ. (UK) and including: Univ. Lethbridge (Canada); NAOC (China); CEA, LAM (France); IFSI, Univ. Padua (Italy); IAC (Spain); Stockholm

Observatory (Sweden); Imperial College London, RAL, UCL-MSSL, UKATC, Univ. Sussex (UK); and Caltech, JPL, NHSC, Univ. Colorado (USA). This development has been supported by national funding agencies: CSA (Canada); NAOC (China); CEA, CNES, CNRS (France); ASI (Italy); MCINN (Spain); SNSB (Sweden); STFC, UKSA (UK); and NASA (USA). C.Y. is supported by the China Scholarship Council grant (CSC No. 201404910443).

References

- ALMA Partnership, Vlahakis, C., Hunter, T. R., Hodge, J. A., et al. 2015, [ApJ](#), **808**, L4
- Becker, R. H., White, R. L., & Helfand, D. J. 1995, [ApJ](#), **450**, 559
- Bell, T. A., Viti, S., & Williams, D. A. 2007, [MNRAS](#), **378**, 983
- Bothwell, M. S., Aguirre, J. E., Chapman, S. C., et al. 2013, [ApJ](#), **779**, 67
- Bournaud, F., Daddi, E., Weiß, A., et al. 2015, [A&A](#), **575**, A56
- Bradford, C. M., Bolatto, A. D., Maloney, P. R., et al. 2011, [ApJ](#), **741**, L37
- Bussmann, R. S., Pérez-Fournon, I., Amber, S., et al. 2013, [ApJ](#), **779**, 25 (B13)
- Calanog, J. A., Fu, H., Cooray, A., et al. 2014, [ApJ](#), **797**, 138
- Casey, C. M., Narayanan, D., & Cooray, A. 2014, [Phys. Rep.](#), **541**, 45
- Combes, F., Rex, M., Rawle, T. D., et al. 2012, [A&A](#), **538**, L4
- Condon, J. J. 1992, [ARA&A](#), **30**, 575
- Cooray, A., Calanog, J., Wardlow, J. L., et al. 2014, [ApJ](#), **790**, 40
- Draine, B. T. 2003, [ARA&A](#), **41**, 241
- Dye, S., Furlanetto, C., Swinbank, A. M., et al. 2015, [MNRAS](#), **452**, 2258
- Eales, S., Dunne, L., Clements, D., et al. 2010, [PASP](#), **122**, 499
- Gao, Y., & Solomon, P. M. 2004, [ApJ](#), **606**, 271
- Gao, Y., Carilli, C. L., Solomon, P. M., & Vanden Bout, P. A. 2007, [ApJ](#), **660**, L93
- García-Burillo, S., Usero, A., Alonso-Herrero, A., et al. 2012, [A&A](#), **539**, A8
- Gérin, M., de Luca, M., Black, J., et al. 2010, [A&A](#), **518**, L110
- González-Alfonso, E., Smith, H. A., Fischer, J., & Cernicharo, J. 2004, [ApJ](#), **613**, 247
- González-Alfonso, E., Smith, H. A., Ashby, M. L. N., et al. 2008, [ApJ](#), **675**, 303
- González-Alfonso, E., Fischer, J., Isaak, K., et al. 2010, [A&A](#), **518**, L43
- González-Alfonso, E., Fischer, J., Graciá-Carpio, J., et al. 2012, [A&A](#), **541**, A4
- González-Alfonso, E., Fischer, J., Bruderer, S., et al. 2013, [A&A](#), **550**, A25
- González-Alfonso, E., Fischer, J., Aalto, S., & Falstad, N. 2014, [A&A](#), **567**, A91 (G14)
- Harris, A. I., Baker, A. J., Frayer, D. T., et al. 2012, [ApJ](#), **752**, 152
- Ivonen, R. J., Swinbank, A. M., Smail, I., et al. 2013, [ApJ](#), **772**, 137
- Kamenetzky, J., Glenn, J., Rangwala, N., et al. 2012, [ApJ](#), **753**, 70
- Kelly, B. C. 2007, [ApJ](#), **665**, 1489
- Kennicutt, Jr., R. C. 1998, [ARA&A](#), **36**, 189
- Kessler, M. F., Steinz, J. A., Anderegg, M. E., et al. 1996, [A&A](#), **315**, L27
- Kirkpatrick, A., Pope, A., Sajina, A., et al. 2015, [ApJ](#), **814**, 9
- Lis, D. C., Neufeld, D. A., Phillips, T. G., Gerin, M., & Neri, R. 2011, [ApJ](#), **738**, L6
- Liu, D., Gao, Y., Isaak, K., et al. 2015, [ApJ](#), **810**, L14
- Lupu, R. E., Scott, K. S., Aguirre, J. E., et al. 2012, [ApJ](#), **757**, 135
- Magdis, G. E., Daddi, E., Elbaz, D., et al. 2011, [ApJ](#), **740**, L15
- Markwardt, C. B. 2009, in *Astronomical Data Analysis Software and Systems XVIII*, eds. D. A. Bohlender, D. Durand, & P. Dowler, ASP Conf. Ser., **411**, 251
- Meijerink, R., & Spaans, M. 2005, [A&A](#), **436**, 397
- Meijerink, R., Spaans, M., Loenen, A. F., & van der Werf, P. P. 2011, [A&A](#), **525**, A119
- Meijerink, R., Kristensen, L. E., Weiß, A., et al. 2013, [ApJ](#), **762**, L16
- Naylor, D. A., Baluteau, J.-P., Barlow, M. J., et al. 2010, in *SPIE Conf. Ser.*, **7731**, 16
- Negrello, M., Hopwood, R., De Zotti, G., et al. 2010, [Science](#), **330**, 800
- Neufeld, D. A., Goicoechea, J. R., Sonnentrucker, P., et al. 2010, [A&A](#), **521**, L10
- Omont, A., Neri, R., Cox, P., et al. 2011, [A&A](#), **530**, L3
- Omont, A., Yang, C., Cox, P., et al. 2013, [A&A](#), **551**, A115 (O13)
- Pascale, E., Auld, R., Dariush, A., et al. 2011, [MNRAS](#), **415**, 911
- Pellegrini, E. W., Smith, J. D., Wolfire, M. G., et al. 2013, [ApJ](#), **779**, L19
- Pereira-Santaella, M., Spinoglio, L., Busquet, G., et al. 2013, [ApJ](#), **768**, 55
- Pilbratt, G. L., Riedinger, J. R., Passvogel, T., et al. 2010, [A&A](#), **518**, L1
- Rangwala, N., Maloney, P. R., Glenn, J., et al. 2011, [ApJ](#), **743**, 94
- Rawle, T. D., Egami, E., Bussmann, R. S., et al. 2014, [ApJ](#), **783**, 59
- Riechers, D. A., Bradford, C. M., Clements, D. L., et al. 2013, [Nature](#), **496**, 329
- Rybak, M., McKean, J. P., Vegetti, S., Andreani, P., & White, S. D. M. 2015, [MNRAS](#), **451**, L40
- San José-García, I., Mottram, J. C., van Dishoeck, E. F., et al. 2016, [A&A](#), **585**, A103
- Serjeant, S. 2012, [MNRAS](#), **424**, 2429
- Solomon, P. M., Downes, D., & Radford, S. J. E. 1992, [ApJ](#), **387**, L55
- Spergel, D. N., Verde, L., Peiris, H. V., et al. 2003, [ApJS](#), **148**, 175

- Spinoglio, L., Pereira-Santaella, M., Busquet, G., et al. 2012, *ApJ*, **758**, 108
- van der Werf, P. P., Isaak, K. G., Meijerink, R., et al. 2010, *A&A*, **518**, L42
- van der Werf, P. P., Berciano Alba, A., Spaans, M., et al. 2011, *ApJ*, **741**, L38
- van Dishoeck, E. F., Herbst, E., & Neufeld, D. A. 2013, *Chemical Reviews*, **113**, 9043
- Vieira, J. D., Marrone, D. P., Chapman, S. C., et al. 2013, *Nature*, **495**, 344
- Wei, A., Requena-Torres, M. A., Gsten, R., et al. 2010, *A&A*, **521**, L1
- Wei, A., De Breuck, C., Marrone, D. P., et al. 2013, *ApJ*, **767**, 88
- Wright, E. L., Eisenhardt, P. R. M., Mainzer, A. K., et al. 2010, *AJ*, **140**, 1868
- Yang, C., Gao, Y., Omont, A., et al. 2013, *ApJ*, **771**, L24 (Y13)
- Yun, M. S., Reddy, N. A., & Condon, J. J. 2001, *ApJ*, **554**, 803
-
- ¹ Purple Mountain Observatory/Key Lab of Radio Astronomy, Chinese Academy of Sciences, 210008 Nanjing, PR China
e-mail: yangcht@pmo.ac.cn
- ² Institut d’Astrophysique Spatiale, CNRS, Univ. Paris-Sud, Universit Paris-Saclay, Bt. 121, 91405 Orsay Cedex, France
- ³ Graduate University of the Chinese Academy of Sciences, 19A Yuquan Road, Shijingshan District, 10049 Beijing, PR China
- ⁴ CNRS, UMR 7095, Institut d’Astrophysique de Paris, 75014 Paris, France
- ⁵ UPMC Univ. Paris 06, UMR 7095, Institut d’Astrophysique de Paris, 75014 Paris, France
- ⁶ Universidad de Alcal, Departamento de Fsica y Matemticas, Campus Universitario, 28871 Alcal de Henares, Madrid, Spain
- ⁷ Institut de Radioastronomie Millimtrique (IRAM), 300 rue de la Piscine, 38406 Saint-Martin-d’Hres, France
- ⁸ Leiden Observatory, Leiden University, PO Box 9513, 2300 RA Leiden, The Netherlands
- ⁹ Max Planck Institut fr Radioastronomie, Auf dem Hgel 69, 53121 Bonn, Germany
- ¹⁰ Department of Earth and Space Sciences, Chalmers University of Technology, Onsala Space Observatory, 43992 Onsala, Sweden
- ¹¹ Department of Physics and Astronomy, Rutgers, The State University of New Jersey, 136 Frelinghuysen Road, Piscataway, NJ 08854-8019, USA
- ¹² Astronomy Department, Cornell University, 220 Space Sciences Building, Ithaca, NY 14853, USA
- ¹³ Department of Physics and Astronomy, University of California, Irvine, Irvine, CA 92697, USA
- ¹⁴ Joint ALMA Observatory, 3107 Alonso de Crdova, Vitacura, Santiago, Chile
- ¹⁵ Universitat Wien, Institut fr Astrophysik, Trkenschanzstrasse 17, 1180 Wien, Austria
- ¹⁶ School of Physics and Astronomy, University of Nottingham, University Park, Nottingham NG7 2RD, UK
- ¹⁷ Institute for Astronomy, University of Edinburgh, Royal Observatory, Blackford Hill, Edinburgh, EH9 3HJ, UK
- ¹⁸ European Southern Observatory, Karl Schwarzschild Strae 2, 85748 Garching, Germany
- ¹⁹ Kapteyn Astronomical Institute, University of Groningen, 9700 AV Groningen, The Netherlands
- ²⁰ School of Physics and Astronomy, Cardiff University, The Parade, Cardiff CF24 3AA, UK

Appendix A: Individual sources

In the Appendix, we describe the observational results of each source, including the lensing model, the H₂O spectrum, mapping of the H₂O and continuum emission (by showing low-resolution NOEMA H₂O and continuum images), the ratio between velocity-integrated flux densities of different H₂O transitions, and the comparison between H₂O and CO emission.

A.1. G09v1.97 at $z = 3.634$

The galaxy G09v1.97 has the second largest redshift in our sample obtained by CARMA (Riechers et al., in prep.). In the SMA 880 μm image (B13), similar to SDP81 (ALMA Partnership, Vlahakis et al. 2015; Dye et al. 2015), it displays a triple arc structure with an angular size scale of $\sim 2''$. However, there are two foreground deflectors at two different redshifts, making this complex mass distribution a very unusual case. B13 estimate a lensing amplification $\mu = 6.9 \pm 0.6$.

We have observed both para-H₂O(2₁₁-2₀₂) and ortho-H₂O(3₂₁-3₁₂) lines at 162 GHz and 251 GHz, respectively. The source is clearly unresolved at 162 GHz, but marginally resolved at 251 GHz as displayed in Fig. A.1. The ratio between the peak and the spatially integrated flux density of the continuum ($S_{\nu(\text{ct})}^{\text{pk}}/S_{\nu(\text{ct})}$) is 0.95 ± 0.03 and 0.60 ± 0.01 at 162 GHz and 251 GHz, respectively. The H₂O emission line peak to spatially integrated flux density ratio ($S_{\text{H}_2\text{O}}^{\text{pk}}/S_{\text{H}_2\text{O}}$) for $J = 2$ and $J = 3$ are 1.0 ± 0.2 and 0.5 ± 0.2 , respectively. Therefore, the spatial concentrations of H₂O and continuum image are in good agreement within the uncertainties.

Both the continuum and the H₂O lines are well detected in this source. The two H₂O lines are well fitted by single Gaussian profiles with similar linewidths (257 ± 27 and $234 \pm 34 \text{ km s}^{-1}$, Fig. 2 and Table 4). The difference in linewidth (23 km s^{-1}) is smaller than the errors of the linewidth. Therefore, there is no significant difference between the spectra of the two transitions. The ratio between $I_{\text{H}_2\text{O}(3_{21}-3_{12})}$ and $I_{\text{H}_2\text{O}(2_{11}-2_{02})}$ is 0.91 ± 0.12 , which is the lowest of our five detected sources in both lines. However, this ratio remains consistent with the observations of local galaxies (Y13, and Fig. 4), by taking the uncertainty into account.

From our CO line observations we find a line FWHM of $\Delta V_{\text{CO}} = 224 \pm 32$ and $292 \pm 86 \text{ km s}^{-1}$ for the CO(5-4) and CO(6-5) lines, respectively, which are within 1σ to the H₂O FWHMs. The observed ratio of $I_{\text{H}_2\text{O}}/I_{\text{CO}}$ for both the CO(5-4) and CO(6-5) lines, is about 0.4 with less than 25% uncertainty.

We have tentatively detected an H₂O⁺ line in this source as well (see Sect. 5).

A.2. G12v2.43 at $z = 3.127$

The source is marginally resolved in the SMA 880 μm image (Fig. 2 of B13), with a size $\sim 1.5''$, but there is no obvious strongly lensed structures such as multiple images. It is not yet possible to build a lensing model for this source because the search for a deflector by B13 has been unsuccessful.

Both para-H₂O(2₀₂-1₁₁) and ortho-H₂O(3₂₁-3₁₂) lines are well detected, as shown in Fig. A.1, and the source is unresolved, consistent with the SMA image. The ratios of $S_{\nu(\text{ct})}^{\text{pk}}/S_{\nu(\text{ct})}$ for 239 GHz and 282 GHz are 0.71 ± 0.02 and 0.87 ± 0.01 , respectively, while the $S_{\text{H}_2\text{O}}^{\text{pk}}/S_{\text{H}_2\text{O}}$ for H₂O(2₀₂-1₁₁) and H₂O(3₂₁-3₁₂) are 0.6 ± 0.2 and 1.0 ± 0.2 , respectively.

The two H₂O lines are both well fitted by a single Gaussian profile. The FWHMs are 201 ± 27 and $221 \pm 20 \text{ km s}^{-1}$ for para-H₂O(2₀₂-1₁₁) and ortho-H₂O(3₂₁-3₁₂), respectively. The difference is within the 1σ uncertainty.

The velocity-integrated flux density ratio of high-lying over low-lying H₂O line of this source, $I_{\text{H}_2\text{O}(3_{21}-3_{12})}/I_{\text{H}_2\text{O}(2_{02}-1_{11})} = 1.2 \pm 0.2$, which is slightly lower than that of Arp 220 as shown in Fig. 4. The linewidths of the H₂O lines (201 ± 27 and $221 \pm 20 \text{ km s}^{-1}$) are the narrowest ones among our sources. The values are also very close to the CO(1-0) linewidth ($210 \pm 30 \text{ km s}^{-1}$, Harris et al. 2012). Their similarity indicates that there is not likely any strong differential lensing effect between the CO and H₂O emissions in this case.

A.3. NCV1.143 at $z = 3.565$

Having a redshift of $z = 3.565$ from CO observation by CARMA (Riechers et al., in prep.), this source is one of the brightest (at submm) in our sample. It is resolved by the SMA 880 μm beam (B13) with a size $\sim 2''$, featured by two components at the north-east and southwest directions. With a single deflector, the lensing model estimates a magnification factor of $\mu = 6.9 \pm 0.6$.

As displayed in Fig. A.1, both the lines and the continuum are very strong and well detected. The ratio $S_{\nu(\text{ct})}^{\text{pk}}/S_{\nu(\text{ct})} = 0.86 \pm 0.02$ shows that the source is unresolved at 165 GHz (for observing para-H₂O line 2₁₁-2₀₂). At 255 GHz, the ratios $S_{\nu(\text{ct})}^{\text{pk}}/S_{\nu(\text{ct})} = 0.55 \pm 0.01$ and $S_{\text{H}_2\text{O}}^{\text{pk}}/S_{\text{H}_2\text{O}} = 0.7 \pm 0.2$ indicate that the source is partially resolved, consistent with the SMA result.

Both the H₂O(2₀₂-1₁₁) and H₂O(3₂₁-3₁₂) lines can be fitted by single Gaussian profiles. The ratio of $I_{\text{H}_2\text{O}(3_{21}-3_{12})}/I_{\text{H}_2\text{O}(2_{11}-2_{02})}$ is 1.36 ± 0.13 , close to the mean ratio found in the nearby star-forming-dominated galaxies (Y13, and Fig. 4). The linewidths of H₂O(2₁₁-2₀₂) and H₂O(3₂₁-3₁₂) are 293 ± 15 and $233 \pm 22 \text{ km s}^{-1}$, respectively. Although the former is larger, they are compatible within an uncertainty of 1.6σ . Also, the H₂O linewidth agrees well with the CO(5-4) and CO(6-5) linewidths (273 ± 27 and $284 \pm 27 \text{ km s}^{-1}$, see Table 3). Therefore, the line ratios are unlikely to be affected by differential magnification. The observed ratio of $I_{\text{H}_2\text{O}}/I_{\text{CO}}$ is 0.4-0.5 and 0.6-0.7 (uncertainties are within 13%) for the $J = 2$ para-H₂O and $J = 3$ ortho-H₂O, respectively.

We have also detected ortho-H₂O⁺(2₁₁-2₀₂) and ortho-H₂O⁺(2₀₂-1₁₁) fine structure lines together with para-H₂O(2₁₁-2₀₂) in this source. The further discussion of the H₂O⁺ spectra and its interpretation are given in Sect. 5.

A.4. NAv1.195 at $z = 2.951$

As quoted in B13, the redshift of this source was first obtained by the CO observation (Harris et al., in prep.). Its SMA image shows a typical lensed feature with two components separated by $\sim 2''$ along the northwest and southeast direction. The lensing model suggests a modest magnification factor $\mu = 4.1 \pm 0.3$.

We have robust detections of H₂O(2₀₂-1₁₁) and the continuum emission at 250 GHz and 293 GHz (Fig. A.1). However, the H₂O(3₂₁-3₁₂) line is at odds with the other five sources. Therefore, we only show the image of the dust continuum emission at this frequency in Fig. A.1. The source is clearly resolved into two components in the three images, and the northwest component is about 4 times stronger than the southeast one in the continuum images, in agreement with the SMA image (B13). For the continuum at 250 GHz, the peak to total integrated flux density

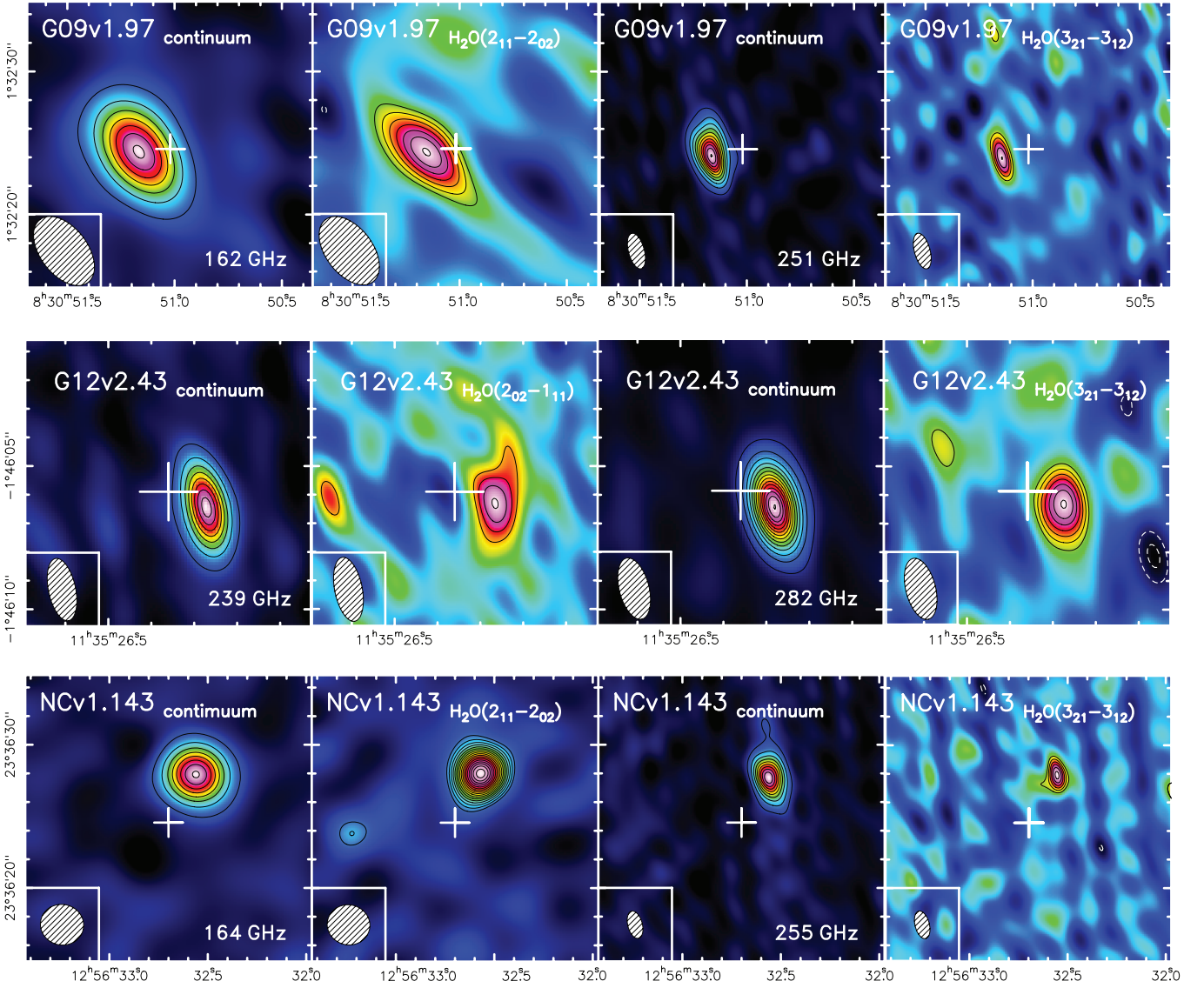


Fig. A.1. Mapping of the H₂O emission lines and the corresponding continuum emission (frequencies have been shown accordingly in the white text) in the sources with both para $J = 2$ and ortho $J = 3$ H₂O lines observed. The contours of the continuum emission start from 6σ in step of 10σ , and the contours of the H₂O emission start from 3σ in step of 1σ . Asymmetric negative contours are shown in white dashed lines. For each observation, the 1σ contours for the continuum (mJy beam^{-1}) and the H₂O emission line ($\text{Jy km s}^{-1} \text{beam}^{-1}$) are as follows: G09v1.97 H₂O($2_{11}-2_{02}$) (0.17/0.57), G09v1.97 H₂O($3_{21}-3_{12}$) (0.25/0.38), G12v2.43 H₂O($2_{02}-1_{11}$) (0.29/0.48), G12v2.43 H₂O($3_{21}-3_{12}$) (0.30/0.53), NCv1.143 H₂O($2_{11}-2_{02}$) (0.16/0.36) and NCv1.143 H₂O($3_{21}-3_{12}$) (0.42/0.72).

ratio $S_{\nu(\text{ct})}^{\text{pk}}/S_{\nu(\text{ct})} = 0.54 \pm 0.02$, and for H₂O($2_{02}-1_{11}$), the ratio $S_{\text{H}_2\text{O}}^{\text{pk}}/S_{\text{H}_2\text{O}}$ equals to 0.6 ± 0.3 . Therefore, the spatial distributions of dust and the H₂O emission are likely to be similar in this source. In the observation at 293 GHz, $S_{\nu(\text{ct})}^{\text{pk}}/S_{\nu(\text{ct})} = 0.42 \pm 0.01$, due to a smaller synthesis beam (Table 1).

Figure 2 shows the spectra corresponding to the two observations of NAV1.195. The H₂O($2_{02}-1_{11}$) line can be fitted by a single Gaussian profile, with a linewidth equal to $328 \pm 51 \text{ km s}^{-1}$. We have not detected the higher excitation H₂O($3_{21}-3_{12}$) line as mentioned above. By assuming the same linewidth as the lower- J H₂O line, we can infer a 2σ detection limit of $2.56 \text{ Jy km s}^{-1}$. This yields a flux ratio of $\text{H}_2\text{O}(\mathbf{3}_{21}-\mathbf{3}_{12})/\text{H}_2\text{O}(\mathbf{2}_{02}-\mathbf{1}_{11}) \leq 0.6$. This value is significantly lower than that in the five other sources where it ranges from 0.75 to 1.60 (errors are within 25%), but it remains close to the lowest values measured in local galaxies (Y13) as shown in Table 6 and Fig. 4. This low ratio of H₂O lines probably originates from

different excitation conditions, especially for the far-infrared radiation field, since the line H₂O($3_{21}-3_{12}$) is mainly populated through far-infrared pumping via absorbing $75 \mu\text{m}$ photons (see Sect. 5). The CO($5-4$) line of the source has a linewidth of $281 \pm 16 \text{ km s}^{-1}$, which is comparable with the H₂O line profile. The observed ratio of $I_{\text{H}_2\text{O}}/I_{\text{CO}}$ (CO($5-4$)) is ≤ 0.4 .

A.5. NAV1.177 at $z = 2.778$

NOEMA observation of the CO line in this source gives a redshift of $z = 2.778$ (Krips et al., in prep.). The SMA $880 \mu\text{m}$ image shows a compact structure with two peaks $\sim 1''$ away along the eastwest direction, and the western component is the dominant one (Fig. 2 of B13). However, due to the absence of deflector in the foreground optical image from SDSS and lack of the deep optical and near-infrared images, the lensing properties are still unknown (B13).

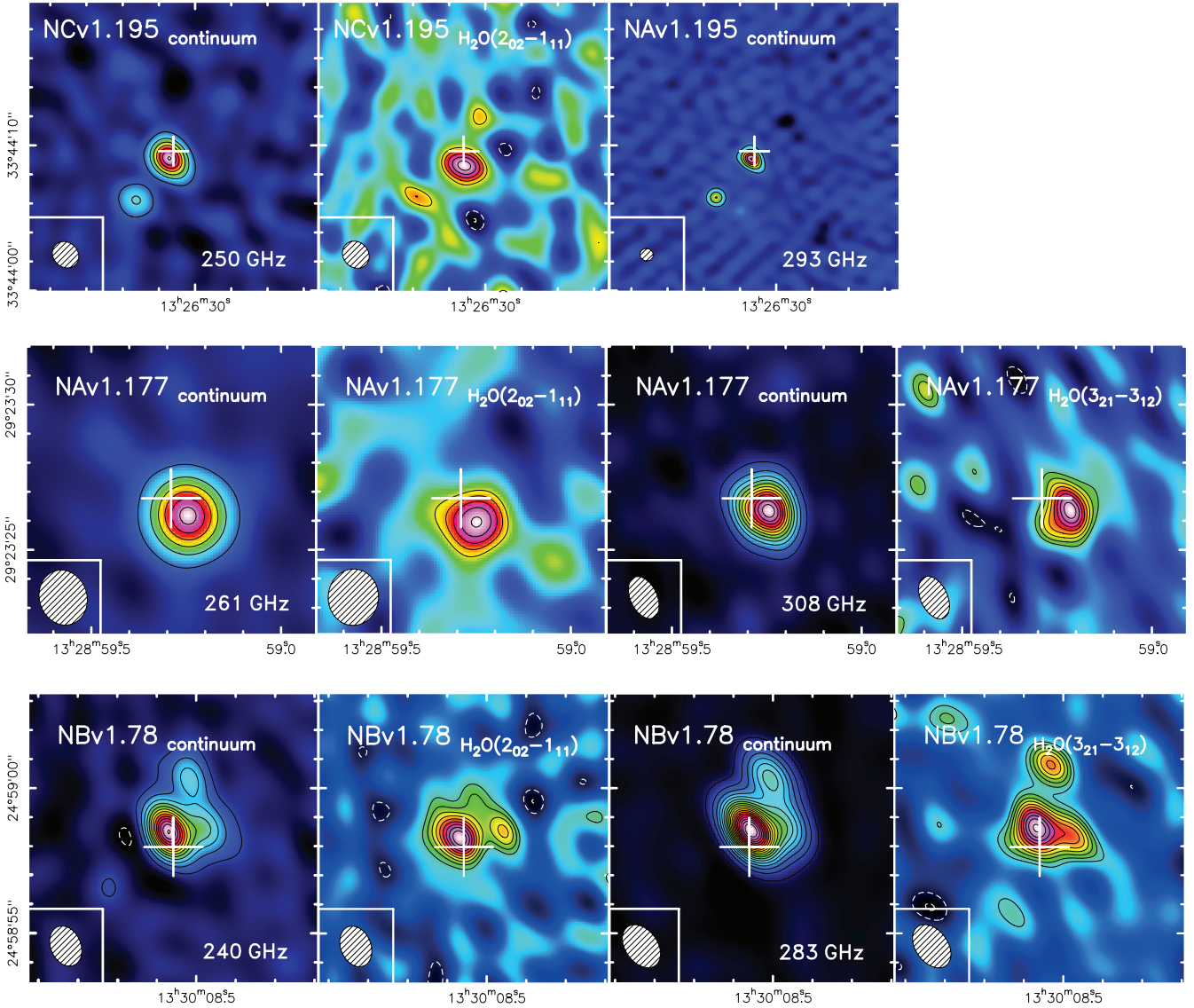


Fig. A.2. (See Fig. A.1 caption.) For each observation, the 1σ contour for the continuum (mJy beam^{-1}) and the H_2O emission line ($\text{Jy km s}^{-1} \text{beam}^{-1}$) are as follows: NCv1.195 $\text{H}_2\text{O}(2_{02}-1_{11})$ (0.34/0.51), NCv1.195 $\text{H}_2\text{O}(3_{21}-3_{12})$ (0.48/-), NAV1.177 $\text{H}_2\text{O}(2_{02}-1_{11})$ (0.58/0.65), NAV1.177 $\text{H}_2\text{O}(3_{21}-3_{12})$ (0.38/0.58), NBv1.78 $\text{H}_2\text{O}(2_{02}-1_{11})$ (0.28/0.30), NBv1.78 $\text{H}_2\text{O}(3_{21}-3_{12})$ (0.21/0.29).

As displayed in Fig. A.1, both the lines of $\text{H}_2\text{O}(2_{02}-1_{11})$ and $\text{H}_2\text{O}(3_{21}-3_{12})$ and the corresponding dust continuum are well detected. The ratios $S_{\nu}(\text{ct})^{\text{pk}}/S_{\nu}(\text{ct})$ are 0.75 ± 0.02 and 0.62 ± 0.01 for observation at 261 GHz and 308 GHz, respectively. One should notice that the direction of the synthesised beam is perpendicular to the alignment of the two components in the image, thus the source is marginally resolved in the $\text{H}_2\text{O}(2_{02}-1_{11})$ and the corresponding dust continuum images. For the $\text{H}_2\text{O}(3_{21}-3_{12})$ observation at higher frequency, we can see the partially resolved feature. The peak to total flux ratios of H_2O are $S_{\text{H}_2\text{O}}^{\text{pk}}/S_{\text{H}_2\text{O}} \sim 0.8 \pm 0.3$ and 0.6 ± 0.1 for the $\text{H}_2\text{O}(2_{02}-1_{11})$ and $\text{H}_2\text{O}(3_{21}-3_{12})$ lines, respectively, indicating similar spatial distribution compared with the dust emission.

The H_2O spectra displayed in Fig. 2 show single Gaussian profiles with $FWHM = 241 \pm 41$ and $272 \pm 24 \text{ km s}^{-1}$ (Table 4). The profiles of the two H_2O lines are similar within the uncertainties. The line ratio, $I_{\text{H}_2\text{O}(3_{21}-3_{12})}/I_{\text{H}_2\text{O}(2_{02}-1_{11})} = 1.34 \pm 0.24$. This value is close to that found in Arp 220 and it is the largest ratio in our sample. We have also detected the $\text{CO}(3-2)$ and $\text{CO}(5-4)$ lines using the IRAM 30 m telescope in this source (Table 3),

the linewidth of CO is around $230 \pm 16 \text{ km s}^{-1}$ which is similar to the width of the detected H_2O lines. The ratio of $I_{\text{H}_2\text{O}}/I_{\text{CO}}$ is from 0.5 to 1.1 with less than 20% uncertainties.

A.6. NBv1.78 at $z = 3.111$

The CO redshift of NBv1.78 was obtained by Riechers et al. (in prep.) via CARMA, $z = 3.111$, and the data of the $\text{H}_2\text{O}(2_{02}-1_{11})$ line were obtained by O13. The source is resolved in the SMA $880 \mu\text{m}$ image (B13) with a somewhat complex morphology, and the size is $\sim 2.5''$. There are three main components in the image. The two strong components located at northwest and southeast direction of the image, and the weakest component close to the southeast. The derived lensing magnification is $\mu = 13.5 \pm 1.5$, which is the second largest among our sample. In the near-infrared images, the source has a similar three-component Einstein ring-like structure with a slightly smaller magnification $\mu = 10.8^{+0.3}_{-0.2}$ (Calanog et al. 2014).

Our NOEMA images of both continuums and H_2O lines as shown in Fig. A.1 are consistent with the SMA $880 \mu\text{m}$ image.

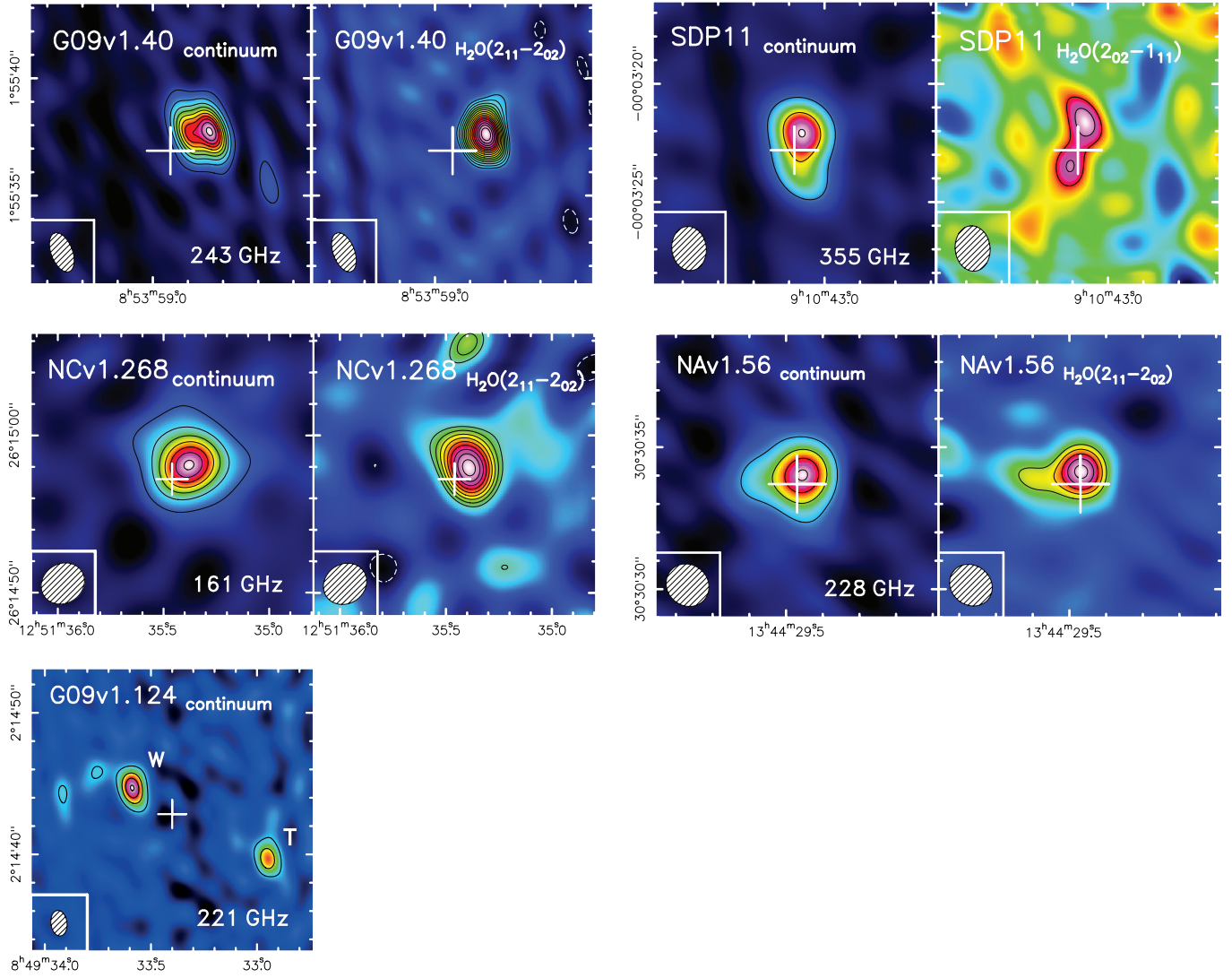


Fig. A.3. (See Fig. A.1 caption.) For each observation, the 1σ contour for the continuum (mJy beam^{-1}) and the H₂O emission line ($\text{Jy km s}^{-1} \text{beam}^{-1}$) are as follows: G09v1.124 H₂O($2_{11}-2_{02}$) (0.17/-), G09v1.40 H₂O($2_{11}-2_{02}$) (0.19/0.32), SDP11 H₂O($2_{02}-1_{11}$) (1.30/1.04), NCV1.268 H₂O($2_{11}-2_{02}$) (0.13/0.39) and NAV1.56 H₂O($2_{11}-2_{02}$) (0.53/1.02).

The images are resolved into two main parts, while the southern component is extended along the western side. The continuum and H₂O line images have fairly high S/N. From the observation of H₂O($2_{02}-1_{11}$) at 241 GHz (O13, note that this observation was performed at higher resolution with a $1.4'' \times 1.0''$ beam), the values of $S_{\nu}(\text{ct})^{\text{pk}}/S_{\nu}(\text{ct})$ and $S_{\text{H}_2\text{O}}^{\text{pk}}/S_{\text{H}_2\text{O}}$ agree well, which are 0.42 ± 0.01 and 0.4 ± 0.1 , respectively. The continuum image at 283 GHz gives $S_{\nu}(\text{ct})^{\text{pk}}/S_{\nu}(\text{ct}) = 0.69 \pm 0.01$, and the image of H₂O($3_{21}-3_{12}$) gives $S_{\text{H}_2\text{O}}^{\text{pk}}/S_{\text{H}_2\text{O}} = 0.8 \pm 0.1$. The similarity of the peak to spatially integrated flux density ratios suggest that the spatial distribution of H₂O and submm dust continuum are likely to be consistent. Additionally, the images of $J = 2$ and $J = 3$ images are also consistent within the uncertainty.

NBV1.78 has a very broad linewidth compared with the other sources. As shown in Fig. 2, the linewidth of H₂O($2_{02}-1_{11}$) and H₂O($3_{21}-3_{12}$) are 510 ± 90 and 607 ± 43 km s^{-1} , respectively. The two lines have similar profiles. The source has a $I_{\text{H}_2\text{O}(3_{21}-3_{12})}/I_{\text{H}_2\text{O}(2_{02}-1_{11})}$ ratio equal to 1, within the range of the local galaxies (Fig. 4). The CO(5-4) and CO(6-5) observations (Table 3) give linewidths of 614 ± 53 and 734 ± 85 km s^{-1} , which

are wider than the H₂O lines. The observed ratio of $I_{\text{H}_2\text{O}}/I_{\text{CO}}$ is about 0.7 with less than 25% uncertainty for $J = 2$ H₂O.

A.7. G09v1.40 at $z = 2.093$

A CO redshift of G09v1.40, $z = 2.0894$ was obtained by CSO/Z-Spec (Lupu et al., in prep.). But, through our H₂O observation, we find a redshift of $z = 2.093$. Our value is consistent with the CO(3-2) observation by Riechers et al. (in prep.), and we have adopted this value. SMA observation of the $880 \mu\text{m}$ dust continuum shows two close components with a separation of $\sim 1''$ along the east and west direction. The lensing model estimates $\mu = 15.3 \pm 3.5$, which is the largest magnification in our sample. The Keck near-infrared image of the source suggests a magnification of $\mu = 11.4^{+0.9}_{-1.0}$ for the stellar component (Calanog et al. 2014).

The H₂O($2_{11}-2_{02}$) line is well detected as well as the corresponding dust continuum. As shown by the images of the H₂O and dust continuum (Fig. A.1), the source is partially resolved by the synthesised beam. The two component (east and

west) structure is consistent with the $880\mu\text{m}$ image, and the western component is stronger than the eastern one. Both ratios of $S_{\nu(\text{ct})}^{\text{pk}}/S_{\nu(\text{ct})}$ and $S_{\text{H}_2\text{O}}^{\text{pk}}/S_{\text{H}_2\text{O}}$ are found to be 0.6 (uncertainty $<13\%$). However, the eastern component is not detected in the H_2O image.

The $\text{H}_2\text{O}(2_{11}-2_{02})$ line can be fitted with a single Gaussian profile with a FWHM of $277 \pm 14 \text{ km s}^{-1}$ (Fig. 2). However, the line has a steeper decline on the red side of the spectrum. The CO(4–3) observation gives a linewidth of $198 \pm 51 \text{ km s}^{-1}$, which is 0.7 ± 0.2 times narrower than that of the H_2O line. The velocity-integrated flux density of the H_2O is larger than that of the CO(4–3) in this source with a ratio of $I_{\text{H}_2\text{O}}/I_{\text{CO}} = 1.1 \pm 0.3$.

A.8. SDP11 at $z = 1.786$

The CO observation by Lupu et al. (2012) found $z = 1.786$. The SMA $880\mu\text{m}$ image displays a typical strongly lensed morphology with two components, north and south, respectively. The size of the source is $\sim 2''$. The gravitational magnification estimated by B13 is $\mu = 10.9 \pm 1.3$.

As shown in Fig. A.1, the source is partially resolved. The dust continuum image shows an extended structure along the north and south direction, with the brightest peak in the northern part. The noisy images are consistent with the SMA $880\mu\text{m}$ observation. The ratio of $S_{\nu(\text{ct})}^{\text{pk}}/S_{\nu(\text{ct})}$ is 0.56 ± 0.03 . The image shows two distinctive components in the north and south direction. This structure also agrees with the high resolution SMA $880\mu\text{m}$ image. Additionally, $S_{\text{H}_2\text{O}}^{\text{pk}}/S_{\text{H}_2\text{O}} = 0.4 \pm 0.2$ suggests that the H_2O image is slightly resolved compared with the dust emission. This difference may come from their different spatial distribution.

Although the noise level of its spectrum is the highest among our sources because of the high frequency, namely 355 GHz, the $\text{H}_2\text{O}(2_{02}-1_{11})$ line is marginally detected with $S/N = 4.6$. The linewidth is $214 \pm 41 \text{ km s}^{-1}$ (Fig. 2).

A.9. NCv1.268 at $z = 3.675$

The redshift of NCv1.268 was obtained by the CO observation of Krips et al. (in prep.). A typical strongly lensed morphology was found by the SMA $880\mu\text{m}$ observation (B13), with a strong arc-like component in the south direction. The structure has a size $\sim 2.5''$. The B13 lensing model estimates $\mu = 13.0 \pm 1.5$.

The source is marginally resolved by the NOEMA synthesis beam (Fig. A.1). When comparing the flux ratios between the dust and H_2O emission from the peak and the spatially integrated values, they give $S_{\nu(\text{ct})}^{\text{pk}}/S_{\nu(\text{ct})} = 0.66 \pm 0.01$ and $S_{\text{H}_2\text{O}}^{\text{pk}}/S_{\text{H}_2\text{O}} = 0.6 \pm 0.1$. The values of dust emission and the H_2O image are in good agreement.

NCv1.268 is the only source in which we have detected a double-peaked line profile from our new observations, with a slightly stronger blue velocity component (Fig. 2). The total linewidth is very large, $731 \pm 75 \text{ km s}^{-1}$.

A.10. NAv1.56 at $z = 2.301$

Harris et al. (2012) give a CO redshift of $z = 2.3010$ for this source. The SMA $880\mu\text{m}$ dust continuum image shows a classic strongly lensed morphology with multiple images. It consists of an arc-like component in the western direction and a point-like component toward the east. They are separated $\sim 2''$. The lens model implies that the magnification factor $\mu = 11.7 \pm 0.9$ (B13).

As shown in Fig. A.1, the source is marginally resolved, with an extended morphology in the eastern part. The structures displayed in the dust and H_2O images are similar. The ratios $S_{\nu(\text{ct})}^{\text{pk}}/S_{\nu(\text{ct})} = 0.62 \pm 0.03$ and $S_{\text{H}_2\text{O}}^{\text{pk}}/S_{\text{H}_2\text{O}} = 0.7 \pm 0.2$ also suggest their similarity within the errors. Most of the fluxes are concentrated in the western part, which agrees with the SMA $880\mu\text{m}$ image.

The $\text{H}_2\text{O}(2_{11}-2_{02})$ line can be fitted by a single Gaussian with a large linewidth equal to $593 \pm 56 \text{ km s}^{-1}$. The CO(4–3) line observation by NOEMA (Oteo et al., in prep.) gives a linewidth of $621 \pm 47 \text{ km s}^{-1}$. The linewidths of CO and H_2O are in very good agreement. Our noisy detection of CO(5–4) at IRAM 30 m (Table 3) gives a ratio of $I_{\text{H}_2\text{O}}/I_{\text{CO}} = 0.8 \pm 0.3$.

A.11. G09v1.124 at $z = 2.410$

The redshift of this source is measured by CO observation (Harris et al. 2012). This multiple source, with two main components, each with intrinsic $L_{\text{IR}} > 10^{13} L_{\odot}$, separated by $10''$ (Fig. A.1), was studied in detail by (Iverson et al. 2013, see also B13 and Oteo et al., in prep.). It is special in our sample since the two main sources are from two very different HyLIRGs rather than multiple images of a single source generated by strong gravitational lensing. The eastern component G09v1.124-W, which contains a powerful AGN (Oteo et al., in prep.), is unlensed and the western component G09v1.124-T is only weakly lensed with a magnification factor $\mu = 1.5 \pm 0.2$. Thus, throughout the discussions, we treat G09v1.124-W and G09v1.124-T as two distinct sources (see Tables 2, 4, 5 and 6).

Probably because of this too small lensing magnification and the smaller values of each μL_{IR} (Table 2), we have only detected the dust continuum emission in this source. The $\text{H}_2\text{O}(2_{11}-2_{02})$ line is undetected. The 2σ upper limits of the velocity-integrated flux density of the $\text{H}_2\text{O}(2_{11}-2_{02})$ line show that the values of $I_{\text{H}_2\text{O}}$ are more than three times smaller than in the other sources. As seen in Table 4 and Fig. 3, the ratio $L_{\text{H}_2\text{O}}/L_{\text{IR}}$ is smaller than all our other sources for G09v1.124-W, probably because of its strong AGN. However, for G09v1.124-T this ratio, albeit small, might be comparable to that of G09v1.97. The dust continuum at 221 GHz follows the same structure as the previously published observations (Fig. A.1 and Iverson et al. 2013). Both the eastern component (W) and the western one (T) are marginally resolved by the synthesised beam. The peak to total continuum flux ratios are $S_{\nu(\text{ct})}^{\text{pk}}/S_{\nu(\text{ct})} = 0.84 \pm 0.03$ and 0.83 ± 0.04 , respectively.

Appendix B: H_2O^+ detections in local ULIRGs

The study using the *Herschel* SPIRE/FTS spectra of 167 local galaxies has revealed several emission and absorption lines of H_2O^+ , which are ortho- H_2O^+ lines $2_{11}-2_{02} (5/2-5/2)$, $2_{02}-1_{11} (5/2-3/2)$, $1_{11}-0_{00} (3/2-1/2)$, $1_{11}-0_{00} (1/2-1/2)$ (Y13, see also Table B.1). All $J \geq 2$ H_2O^+ lines are in emission. Table B.1 gives values of the H_2O^+ flux and luminosity for those among the Y13 sample where H_2O^+ lines are (tentatively) detected with $S/N \geq 2.5$. However, for the $\text{H}_2\text{O}^+(1_{11}-0_{00})$ lines which connect the ground state, they are often found to be in emission in AGN-dominated sources while they are in absorption in star-forming-dominated ones. A full description of the dataset for this *Herschel* SPIRE/FTS survey will be given in Liu et al. in prep. At high-redshift prior to our study, the $J = 2$ ortho- H_2O^+ doublet lines seem to have only been tentatively detected in two sources, SPT0346-52 (Weiß et al. 2013) and HFLS3 (Riechers et al. 2013).

Table B.1. Beam-matched H₂O⁺, H₂O line and infrared luminosities from local detections (*Herschel* SPIRE/FTS archive) and high-redshift *Herschel* lensed galaxies.

Source	$2_{02-1_{11}}(5/2-3/2)$ $10^6 L_{\odot}$	$2_{11-2_{02}}(5/2-5/2)$ $10^6 L_{\odot}$	$L_{\text{IR-beam}}$ $10^{11} L_{\odot}$	$L_{\text{H}_2\text{O}}$ $10^6 L_{\odot}$
Local ULIRGs				
ESO320-G030	0.4 ± 0.1	–	1.5	0.9
CGCG049-057	0.3 ± 0.1	0.7 ± 0.2	1.9	1.6
NGC 2623	0.5 ± 0.2	0.7 ± 0.3	3.5	2.0
Arp299-A	0.8 ± 0.2	0.7 ± 0.3	5.4	1.3
Arp220	3.7 ± 0.8	3.5 ± 0.9	16.2	15.2
IRAS13120-5453	3.6 ± 1.2	2.4 ± 1.0	28.2	10.7
IRASF17207-0014	6.8 ± 2.2	6.3 ± 2.2	24.6	15.5
Mrk231	2.6 ± 1.0	3.0 ± 1.5	32.4	9.3
High-redshift lensed galaxies				
NCv1.143	28.7 ± 7.2	28.6 ± 7.2	113.6	89.7
G09v1.97	35.8 ± 9.0	–	211.4	106.6
G15v2.779	–	55.8 ± 15.9	270.0	266.0
HFLS3	–	261.8 ± 200.3	364.0	737.8

Notes. Luminosity of H₂O⁺ fine structure lines $2_{02-1_{11}}(5/2-3/2)$ (742.1 GHz), $2_{11-2_{02}}(5/2-5/2)$ (746.5 GHz), and H₂O($2_{11-2_{02}}$). As for the local sources the *Herschel* SPIRE/FTS beam is smaller than the entire source for some galaxies, here $L_{\text{IR-beam}}$ represents the L_{IR} from the same beam area as the measured emission line (a full description will be given by Liu et al., in prep.). $L_{\text{H}_2\text{O}}$ is the luminosity of H₂O($2_{11-2_{02}}$). HFLS3 data are taken from [Riechers et al. \(2013\)](#).