

Supplementary figures

Figure S1. Cohort from first SARS-CoV-2 date between 21 February 2020 until 30 June 2020

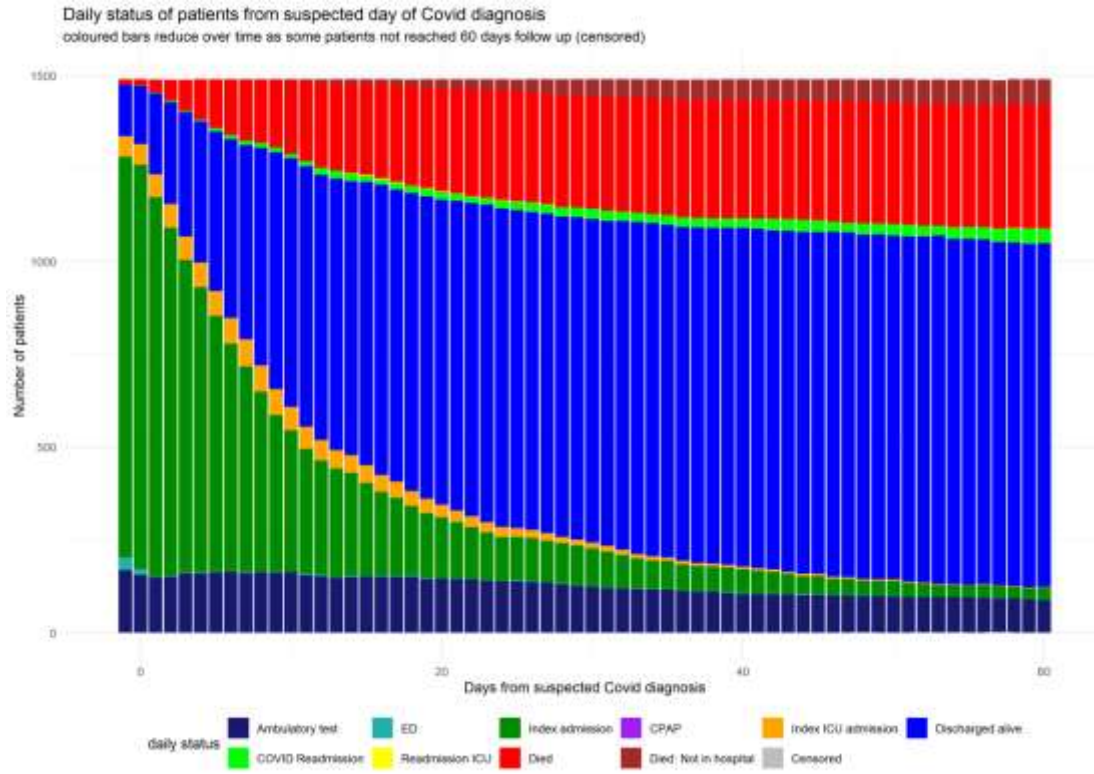


Figure S2a. Flow chart of all SARS-COV-2 patients in the derivation cohort until 30th June 2020

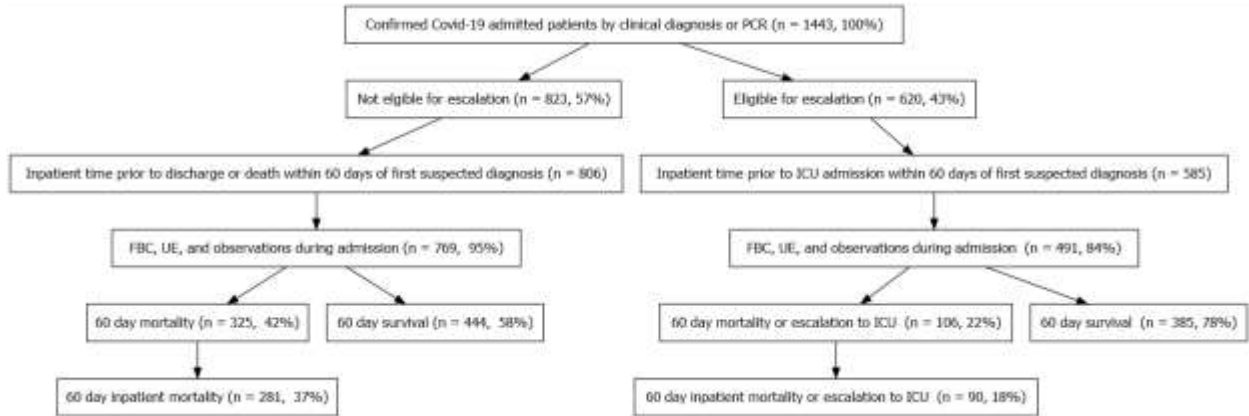


Figure S2b. Flow chart of all SARS-COV-2 patients in the validation cohort from 1st July 2020

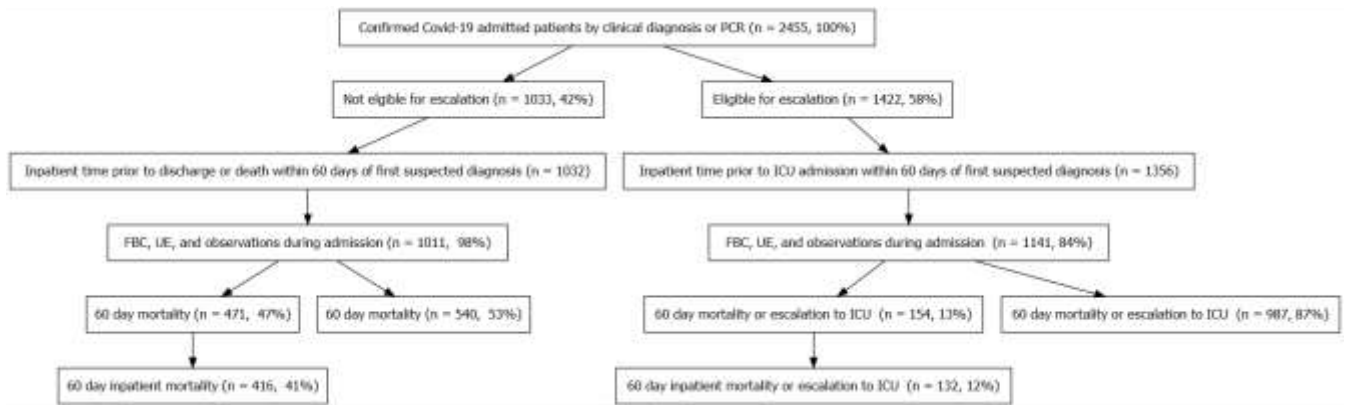
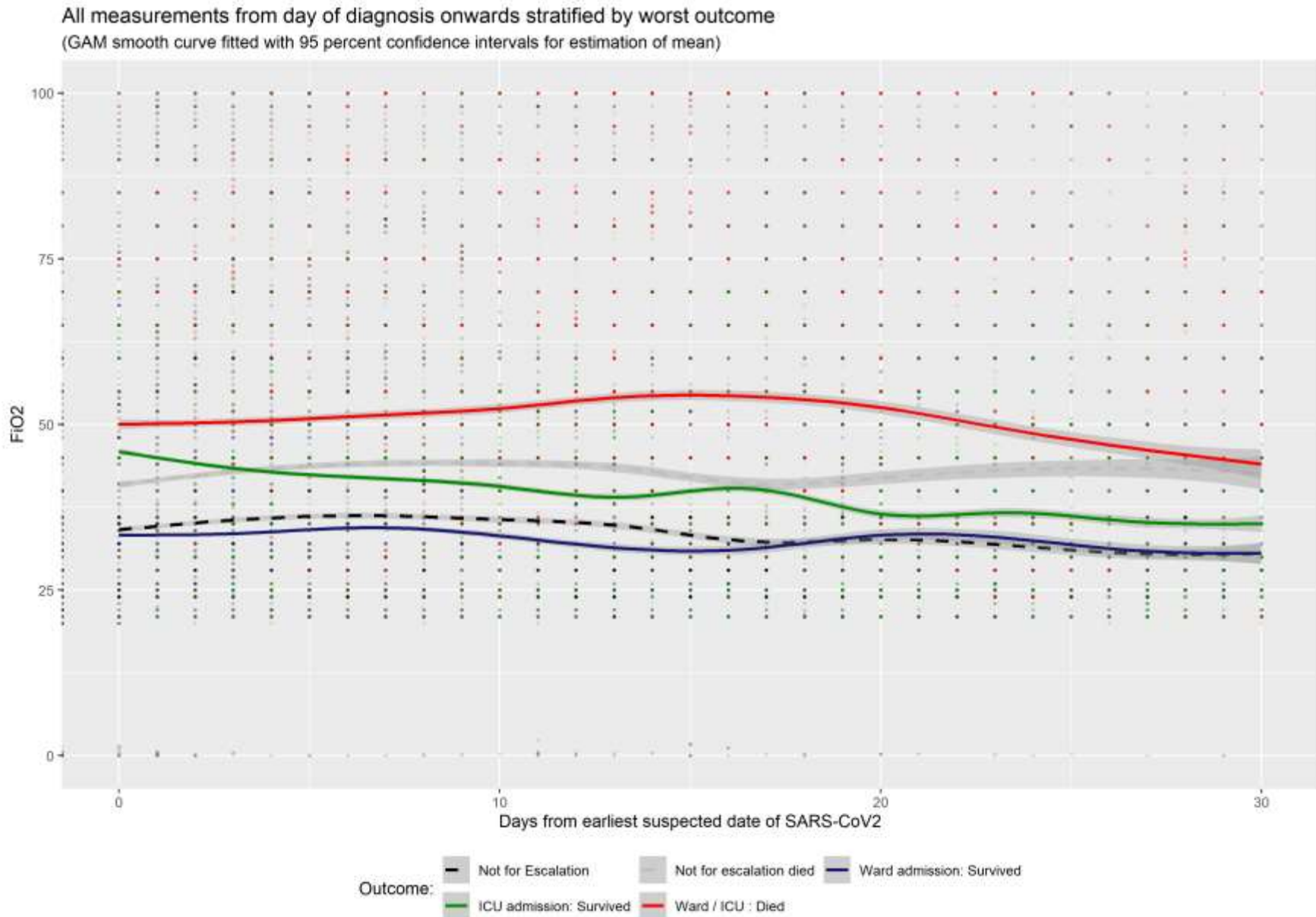
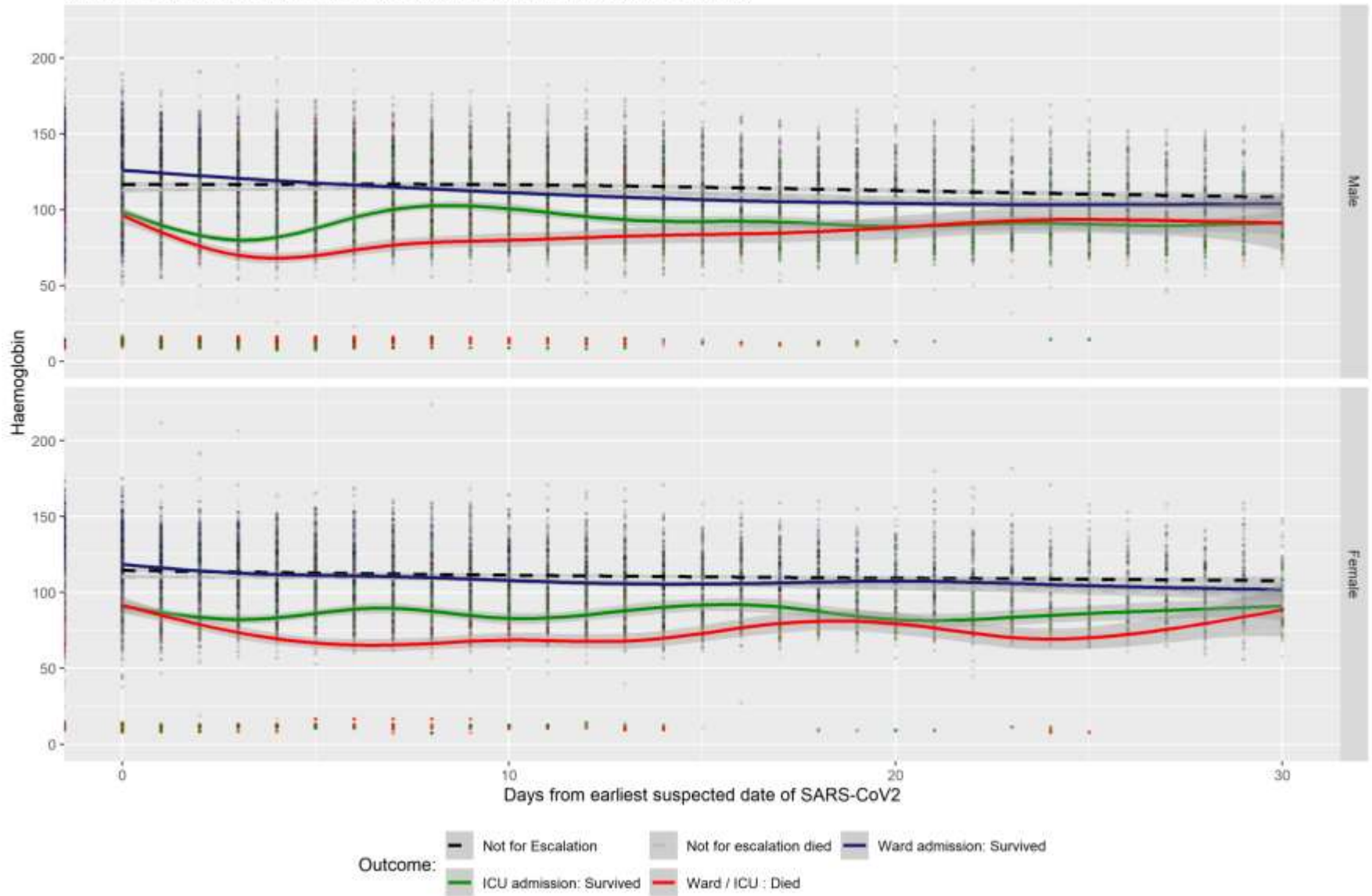


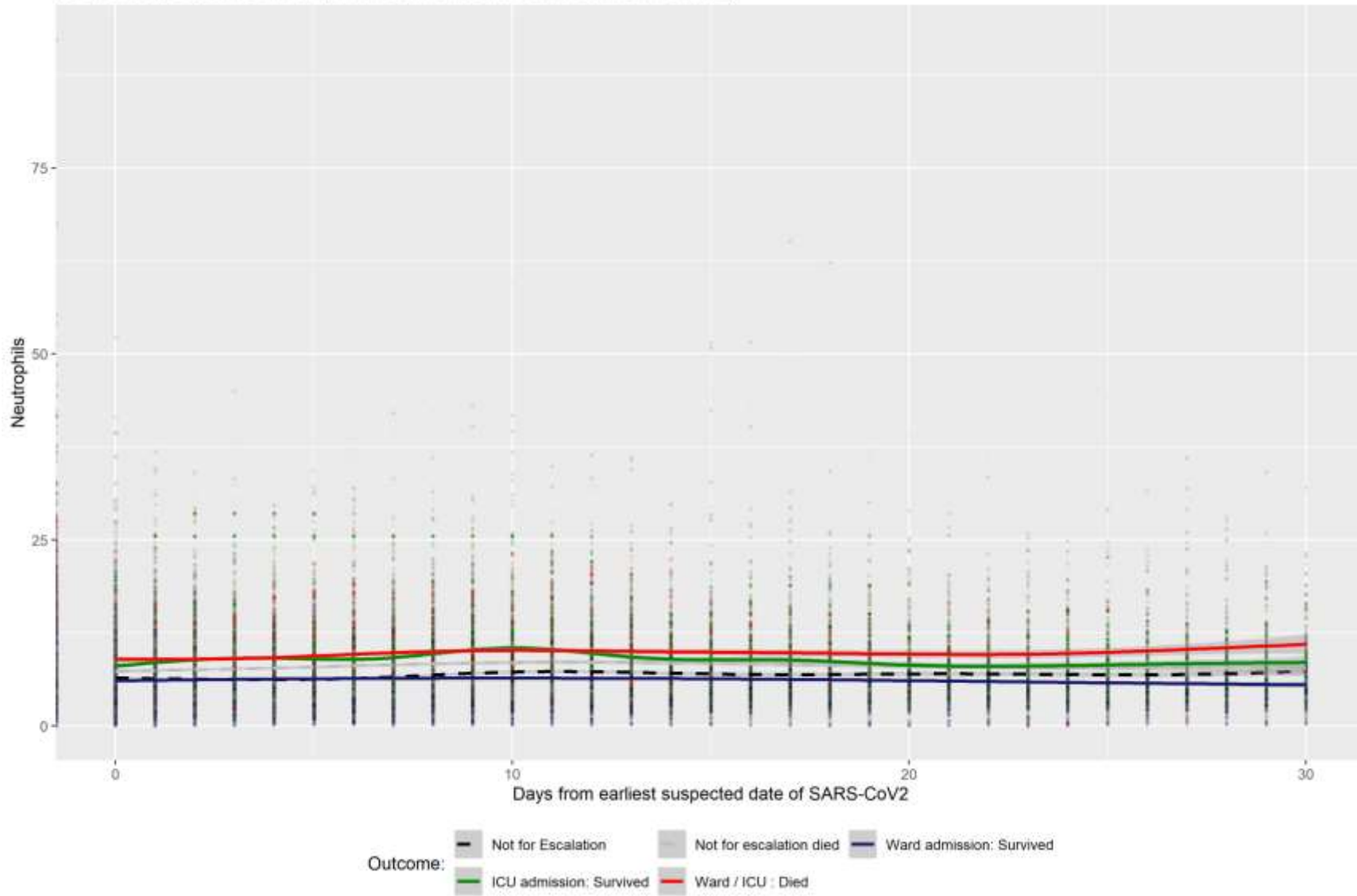
Figure S3. Longitudinal smoothed means of selected observations and blood tests by observed worst outcome



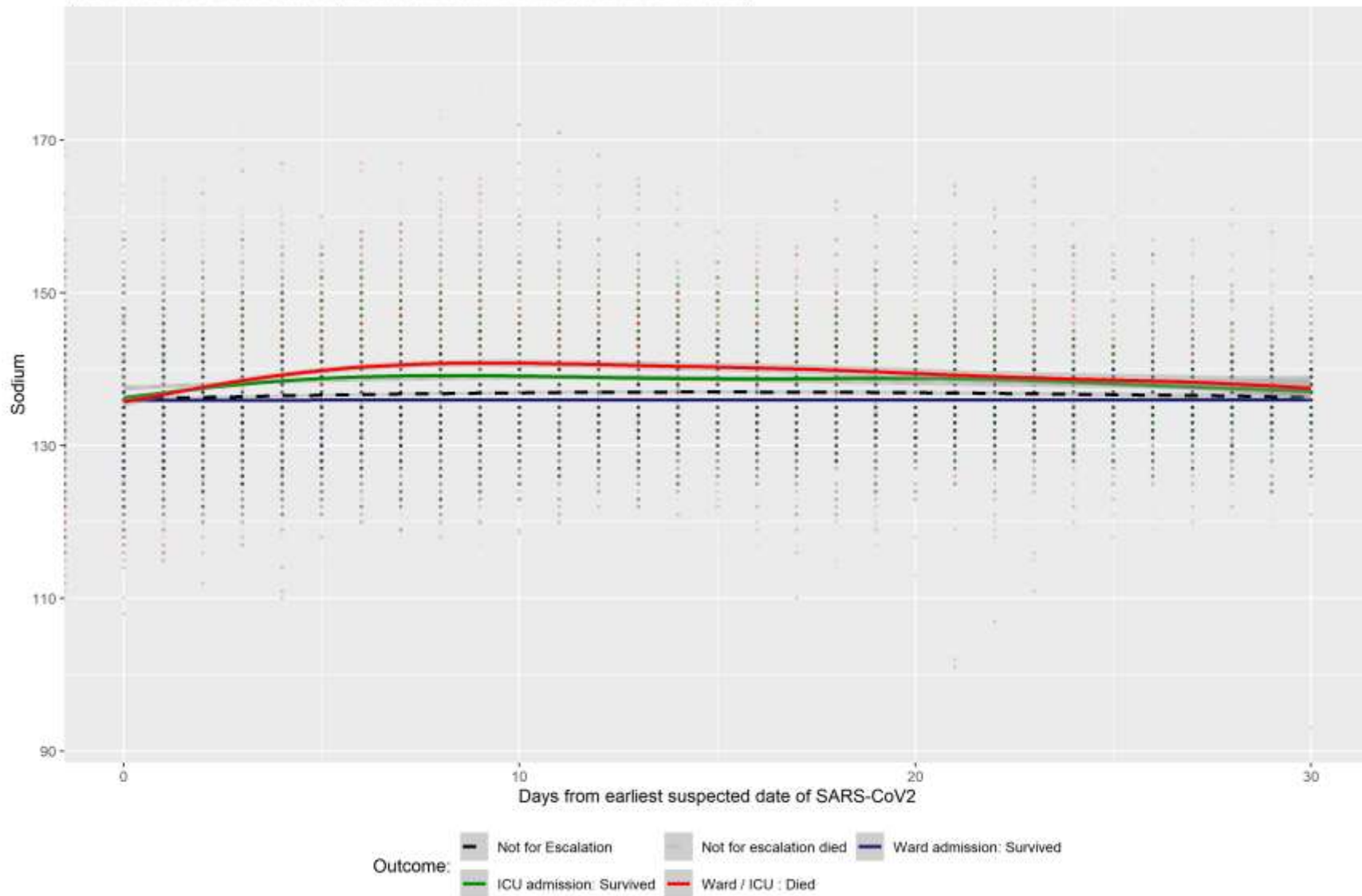
All measurements from day of diagnosis onwards stratified by worst outcome
 (GAM smooth curve fitted with 95 percent confidence intervals for estimation of mean)



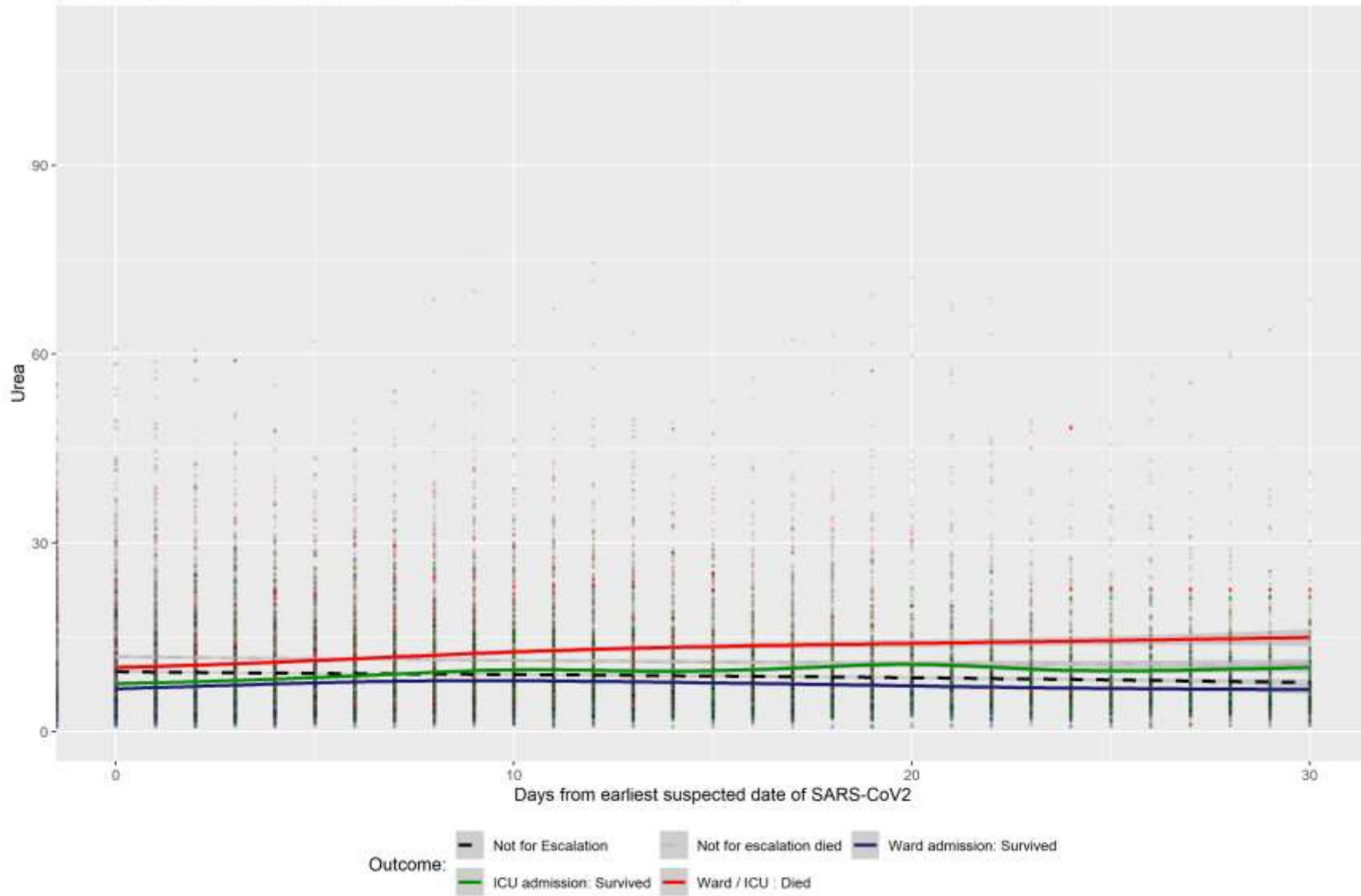
All measurements from day of diagnosis onwards stratified by worst outcome
(GAM smooth curve fitted with 95 percent confidence intervals for estimation of mean)



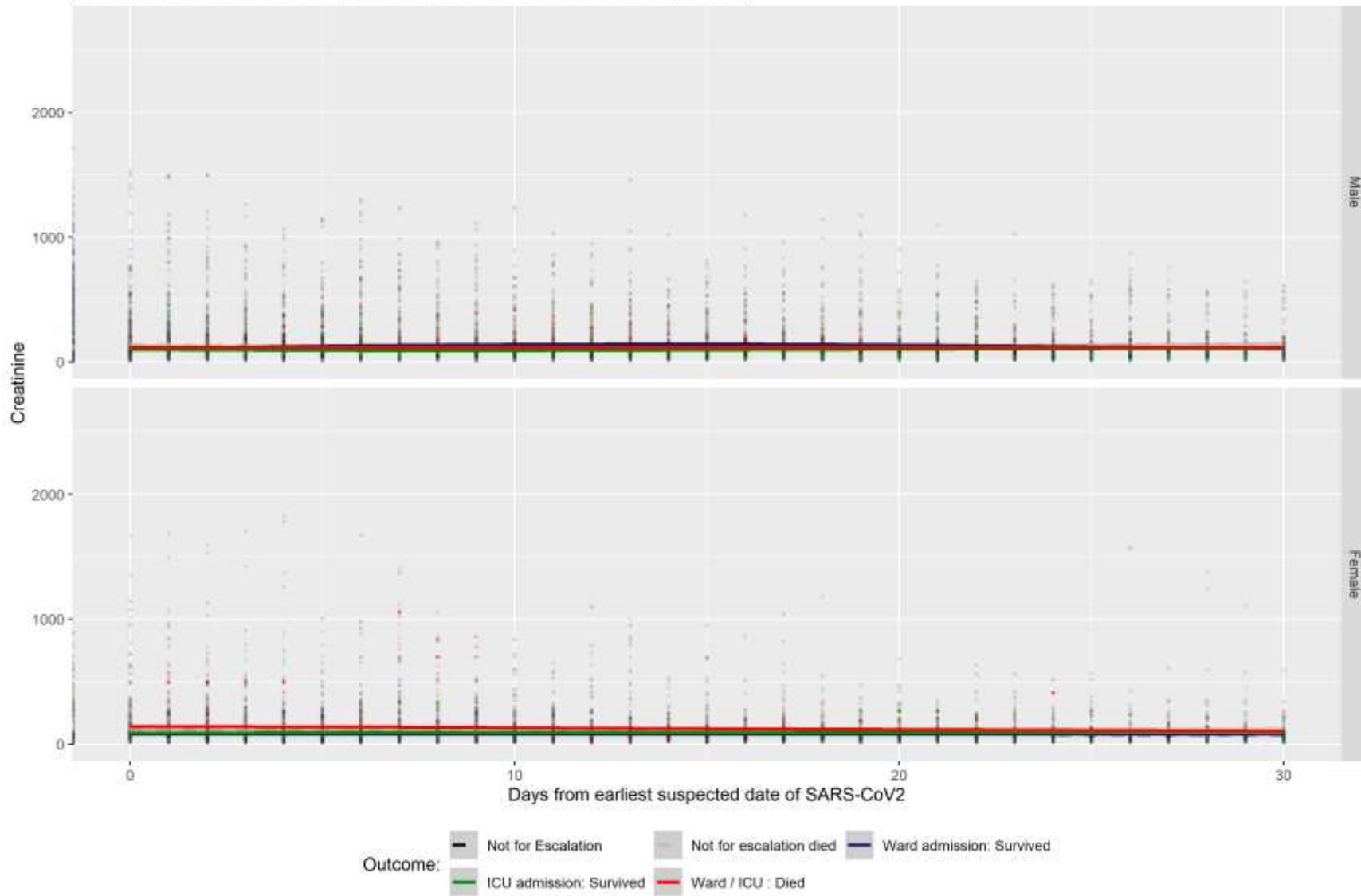
All measurements from day of diagnosis onwards stratified by worst outcome
(GAM smooth curve fitted with 95 percent confidence intervals for estimation of mean)



All measurements from day of diagnosis onwards stratified by worst outcome
(GAM smooth curve fitted with 95 percent confidence intervals for estimation of mean)



All measurements from day of diagnosis onwards stratified by worst outcome
 (GAM smooth curve fitted with 95 percent confidence intervals for estimation of mean)



All measurements from day of diagnosis onwards stratified by worst outcome
(GAM smooth curve fitted with 95 percent confidence intervals for estimation of mean)

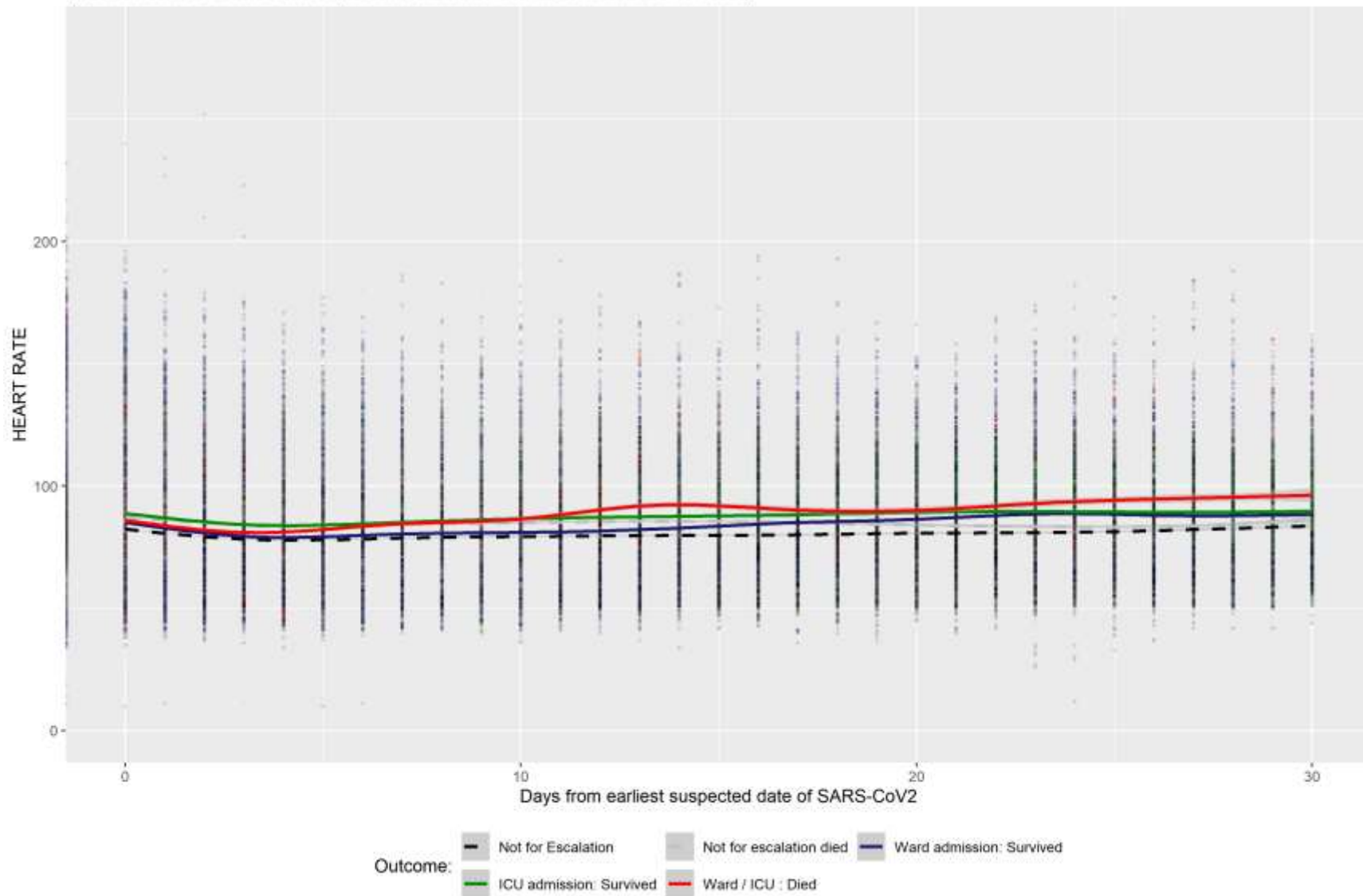


Figure S4. ROC curves and AUC for daily prediction of next day escalation from time varying model by day of disease course within patients eligible for escalation to ICU 1 July 2020 until 31 December 2020 in validation cohort

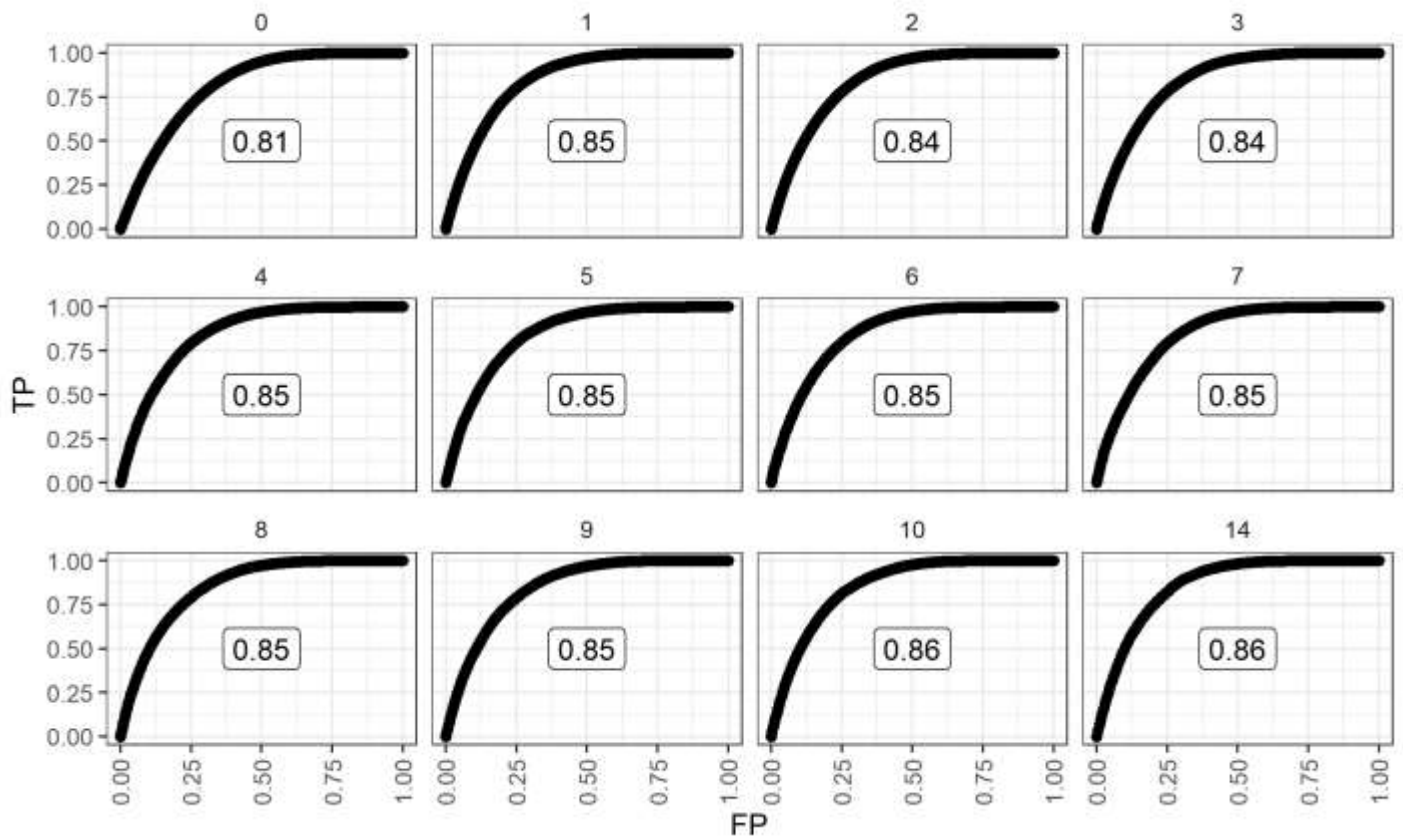


Figure S5:

ROC curves and AUC for daily prediction of next day mortality by day of disease course for patients ineligible for escalation to ICU 1 July 2020 until 31 December 2020 in validation cohort

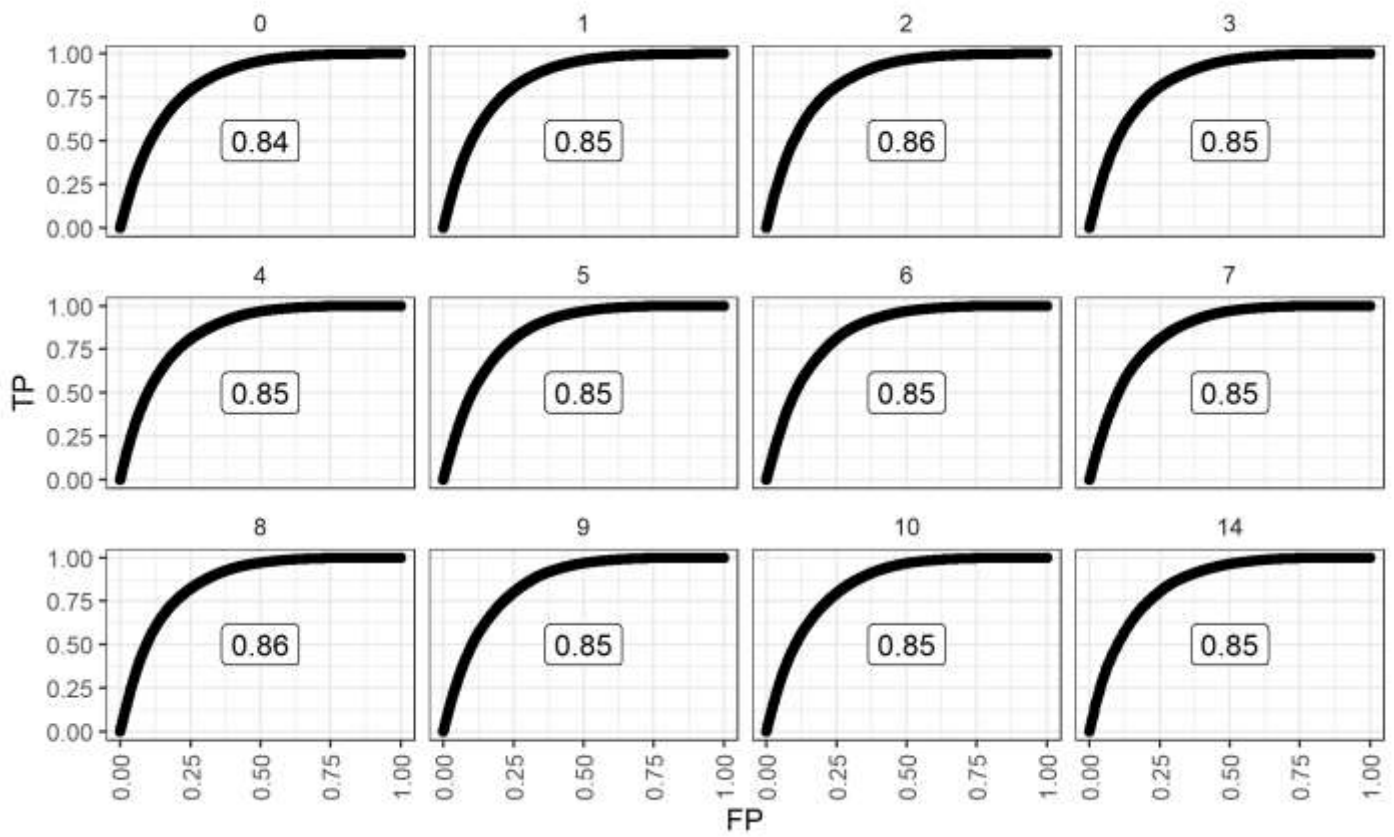


Figure S6

Baseline survival curves from fitted Cox proportional hazard models in table 3 in the derivation cohort, with 95% confidence intervals. Calculation set at mean values of cohort (model linear predictor calculations centred on mean values).

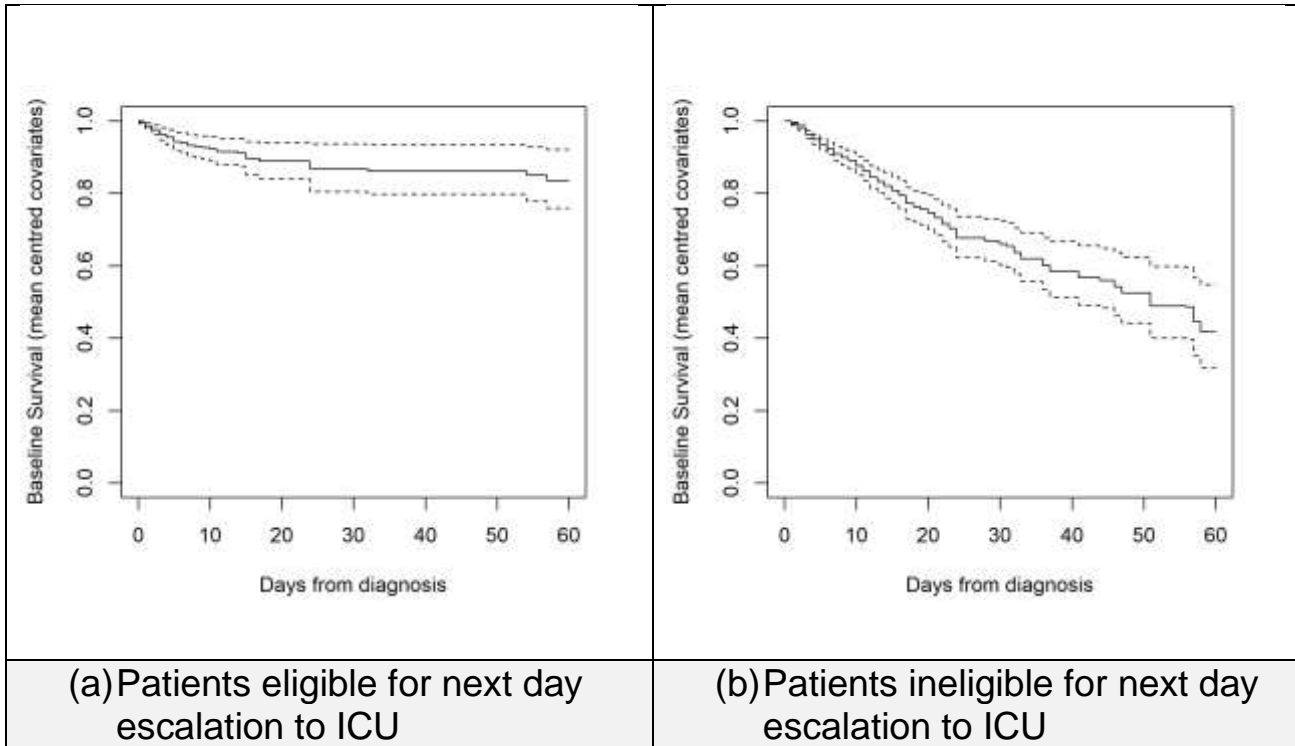


Figure S7

Calibration curve for next day prediction of ICU admission or death in the validation cohort for eligible patients for ICU, and for next day death for ineligible patients for ICU

