

# Power Conversion for a Novel AC/DC Aircraft Electrical Distribution System

Andrew Trentin, Pericle Zanchetta, Pat Wheeler, Jon Clare

**Abstract:** This paper proposes a novel and compact AC/DC electrical distribution system for new generation aircraft. In these new aircraft power systems, all loads are fed by two dc bus systems: at 28V and at +/-270V. The electrical distribution system, whose design and implementation are described in this paper, has only one primary AC source (360-900Hz at 230V) with all the required dc voltage levels being derived from this source. This solution enables elimination of the complex mechanical coupling apparatus currently used, for fixed frequency AC systems, to maintain the generator speed at constant level while the engines operate at variable speed. Under the proposed solution, all conversion stages needed to generate the various output voltage levels are implemented using power converters assembled in one unit. Each converter has a current control loop in order to regulate the output current even during output line short circuits and also to limit the inrush current to the circuit at turn-on. To prove the concept a 5 kW prototype was designed and tested, and demonstrated to meet all the specifications within relevant standards regarding input and output power quality.

**Index Terms:** 3-phase buck-type PWM rectifier, DC/DC converter, Multiple DC Network

## 1. Introduction

Modern aircraft employ an increasing amount of electrical power in place of hydraulic, pneumatic and mechanical power. This has led to the massively increased use of power converters and electrical drives for different on board applications. In fact within the so called More Electric Aircraft (MEA) approach, electrical power is employed for primary and secondary systems, including flight surface actuators, de-icing, flight control, passenger entertainment, cabin air conditioning and engine start. The engine control has also significantly changed, removing the necessity for many hydraulic systems and the bleed air system; thus the MEA will be a lighter and more efficient airplane, resulting in energy and fuel saving, higher reliability and reduced running costs [1]-[4]. To meet the requirements, it is becoming vital to produce lighter, more efficient and more reliable power converters to be installed on board.

Figure 1a shows the state of the art of a modern aircraft AC/DC distribution system. The primary source to generate the 28Vdc power line is the 3 phase AC source<sub>1</sub> (115V at fixed frequency 400Hz). A Transformer Rectifier Unit (TRU) generates the 28Vdc. During extreme emergency situations the power source becomes the ram air turbine (RAT) generator. Figure 1 also shows the presence of a backup battery system and its associated battery charger fed by the same AC source 1. The high voltage DC power line (HVDC), with a nominal voltage of +/-270V can be supplied by two different power sources according to design choices: either a high voltage DC generator or an Auto transformer Rectifier Unit (ATRU) powered by AC source 2. This high voltage AC source (HVAC) is 230Vphase to neutral in

Variable Speed Variable Frequency (VSVF) systems, with a frequency variation between 360-900Hz.

This paper proposes a novel AC/DC aircraft distribution system, whose structure is shown in figure 1-b. The main differences of the proposed scheme, compared to the traditional one are:

- The main input source is the VSVF (variable speed, variable frequency) AC generator at high voltage (HVAC); there is no need for a 400Hz-115Vac generator.
- The TRU and ATRU (that normally work in a low frequency range <1KHZ with bulky magnetics) are eliminated. Their functions are replaced by isolated DC/DC converter(s) with high frequency transformers (usually within the range 20kHz-100kHz)

All isolated DC/DC converters in the scheme are fed by the output voltage of the AC/DC buck rectifier, at a rated value of 400V [5]-[6]-[7]. Each DC/DC converter includes current control, in order to regulate and limit the output current in all operating conditions (including implementing output  $I^2t$  protection).

In this study a prototype of the proposed distribution system has been designed, assembled and tested with all components shown in figure 1-b, with the exception of the battery storage system. The power level is around 5kW and the system features three different DC outputs: two at 28V and 20A (called V1 and V2) and one at +/- 270V at 6 A (called V3). The prototype is shown in figure 2, where it is possible to identify the different elements:

- 1) The 3-phase PWM buck-type rectifier
- 2) The main dc link capacitor (at 400V)
- 3) The first DC/DC converter from 400V to 28V, 15A (V1)
- 4) The second DC/DC converter from 400V to 28V, 15A (V2)
- 5) The DC/DC converter from 400V to +/- 270V, 5A (V3)
- 6) The digital control unit for all power electronics systems

All outputs have been designed for an overload capability of 30%.

The remainder of this paper describes the design and implementation of the individual power conversion blocks and the comprehensive experimental results obtained. Control strategies for the individual converters are described. Stability analysis of complete DC networks is considered beyond the scope of the paper and has been widely discussed

elsewhere, for example [8].

## **2. Description of the system**

### **2.1 The 3-phase buck-type PWM rectifier**

The circuit of a 3-phase buck-type PWM rectifier [9]-[19] is shown in figure 3. The main characteristics of this converter can be summarised as follows:

- The maximum output voltage is equal to 86.6% of the input phase-to-phase voltage.
- It is capable of achieving almost sinusoidal input currents with the use of a small input filter designed to remove switching harmonic components.
- Capability to control the input power factor (under some limitations relative to the maximum output voltage).
- It does not need any pre-charge circuit.

In recent years this converter topology has generated substantial attention from industry and the research community for aircraft applications particularly for its high reliability [9], [17].

Another important advantage of this topology for aircraft applications is its low weight [9]: the main input filter is not designed to store any bulk energy, but only to filter the switching harmonics, while the output filter can be designed according to different criteria: filtering the switching harmonics (in which case it can be very small) or it can be used to store a sufficient amount of energy to maintain the quality of the output voltage during faults and/or interruption of the input voltage.

In order to meet aerospace power quality standards for the input current and at the same time maintain a reduced size of the input filter, the switching frequency must be chosen as high as possible [19]. This is made possible by using SiC MOSFETs instead of traditional IGBTs without compromising the converter efficiency. The parameters of the input and output filters together with the devices used are listed in Table I.

### **2.2 The 400-28V DC/DC converter**

To generate the 28V dc bus voltage, traditional DC/DC converters with transformer isolation (see figure 4) are used [20]. The input stage is represented by a half bridge configuration followed by an isolated centre-tap transformer; the

output is a synchronous rectifier using low voltage MOSFETs with a very low drain source resistance  $R_{DS}$  to minimize the conduction losses. Hard switching is employed in order to be able to control the output current and voltage in all load situations, from open circuit to short circuit. The switches used on the input half bridge are standard Si MOSFETs rated at 600V, due to the fact that the input voltage is stabilised at 400V. All parameters associated with the input and output filters and the devices are summarized in Table II.

### **2.3 The +/-270 DC/DC converter**

In order to power the +/- 270Vdc bus the design choice was to use a standard DC/DC converter with galvanic isolation (Fig. 5) [20] instead of a 3-phase buck rectifier with an integrated boost converter. Even if the latter solution has very good performance in terms of efficiency [13]-[14], in the case of a fault on the load side of the +/- 270 dc bus, all other DC outputs would be significantly affected. If a DC/DC converter with galvanic isolation is used instead, it is possible to disable the converter without any extra electronics or mechanical devices.

The input stage employs a full bridge using MOSFETs rated at 600V. In order to attain the required power rating while using ETD transformer cores (for construction simplicity), two transformers were used. Due to the fact that this transformer needs to operate with high voltage rather than high current, it was decided to use two transformers in series. The output rectifier stage uses a SiC diode bridge to avoid recovery losses. In this case the use of synchronous rectification is not desirable because the  $R_{DS}$  of high voltage SiC MOSFETs is considerably higher than that of the Si MOSFETs used in the 28V DC/DC converter. Therefore the conduction losses would be similar to that obtained using SiC diodes in parallel. In addition, using SiC diodes avoids the recovery losses that are present in the body diode (Si) of the SiC MOSFETs. This DC/DC converter uses hard switching commutation in order to ensure control of output current and voltage in all load situations. All parameters of the input/output filters and devices are listed in Table III.

### **2.4 Control of the converters**

The prototype was implemented using a single control platform; however the control of each unit (the active rectifier and the 3 DC/DC isolated converters) has been implemented separately and is independent. The main task of the 3-phase buck-type PWM rectifier is to control the DC voltage across the main dc link capacitor C8 (figure 3); to do so the converter control system implements a cascade voltage-current loop.

- the external loop is a PI-based voltage control with the voltage feedback signal measured across C8 (figure

8)

- The internal current loop is implemented using a second order controller with plant pole-zero cancellation.

The current sensor measures the current flowing through L3 (figure 8)

Full details about the control of the 3-phase buck-type PWM rectifier are reported in [18].

The converter control system for the three DC/DC isolated converters implements a simple cascade voltage –current loop as shown in figure 6:

- the external loop is a PI-based voltage control with output voltage feedback
- the internal loop is a PI-based current control (the current sensor for the 28V scheme is a shunt resistor (see figure 4), while the current sensor for the 540Vdc scheme is located on L6 (see figure 5))

The performance of the control system is shown in detail in figure 7, which depicts experimental results with data recorded by the control platform with a sampling time of 50 $\mu$ s. Figure 7a shows the turn on sequence of each dc/dc power converter, while part b) shows the behavior of the low voltage converter when the high voltage one is turned off. It is clear that the 28V rail remains inside the limit line when there are large step loads on the V3 output.

### **3. Experimental results**

#### **3.1 AC input power quality**

Figure 8 shows oscilloscope traces of the AC input line current and line voltage at the rated power condition, when the input frequency is 900 Hz. It is clear that the voltage and current are almost in phase: more details regarding power factor values are reported in Table IV. Figure 8b shows the spectrum of the line current and figure 8c presents a zoom of figure 8b at lower frequencies, highlighting that the designed system fulfills the aircraft standards specification.

#### **3.2 28V DC output power quality**

Figure 9 shows oscilloscope traces of the voltage and current at the output of the 28V dc/dc converter, while figure 9b shows the spectrum of the output voltage plotted with the standard limits, highlighting that this part of the designed system also fulfills the aircraft standards specification.

#### **3.3 The +/-270V DC output power quality**

Figure 10 shows the input current and input voltage of the transformer. Figure 11a shows oscilloscope traces of the positive and negative voltage (+/-270), the differential voltage (540V) and the output current for the +/-270V high voltage DC/DC power converter. Figure 11b shows the spectrum of the differential output voltage plotted with its standards limit; figure 11c show the spectrum of the common mode voltage plotted against the standards limit while figure 11d presents a zoom of Figure 11c on the vertical axis. Both differential and common mode voltage largely fulfill the aircraft standards specification.

### **3.4 I<sup>2</sup>t protection for all DC outputs**

All DC/DC converters in the proposed distribution system are equipped with  $i^2t$  protection at the output. In this implementation, when a short circuit occurs, each single converter control will limit its output current to a fixed value (4 times rated for the low voltage converters and 5 times rated for the high voltage converter) until the computation of  $I^2t$  reaches its limit, when the converter is disabled. Figure 12a shows the behavior of the high voltage DC/DC converter during a short circuit, while figure 12b shows the behavior of the low voltage dc/dc converter during a short circuit. This data was recorded by the control unit with a sampling time of 50 $\mu$ s. When the short circuit occurs, the control system has some difficulty to maintain the current level to a fixed value; this is due to two specific factors, firstly there is a limitation due to the controller bandwidth and secondly the short circuit was generated using a standard contactor which has “bounce” and creates some ringing effects.

### **3.6 Efficiency of the whole distribution system**

The efficiency of the proposed AC/DC distribution system was measured using two power analyzers (PPA2530), one placed at the input and the second one at the output of the system. Table IV summarizes the measured characteristics of the distribution system under different load conditions and also at different input frequencies. In all tests the power factor is almost equal to 1 and the total efficiency is between 91-93 %. Table V shows the efficiency for the 3-phase buck-type rectifier when the dc output voltage reference has been set to 390V. At low power levels, in order to maintain unity power factor operation, the dc output voltage has been limited so as to compensate the high reactive power of the input capacitor due to the high input frequency [19]. The efficiency of the 3-phase buck-type rectifier including input and output filters is around 96.2%; this means that the high voltage DC/DC converter has an estimated efficiency of around 96.7%, and the low voltage DC/DC converter has an efficiency of around 94%.

## 4. Discussion

The experimental investigation carried out in this paper has demonstrated that it is possible to use an integrated power electronics based solution for an AC/DC distribution system in aircraft applications. At the input (AC) the proposed conversion unit exhibits unity power factor operation for almost all operating conditions, well within the standard limits. The input current has a very high quality with its entire harmonic spectrum up to 150kHz (EMC frequencies were not considered in this study) within aircraft standards specifications; this result was achieved due to the use of high voltage SiC MOSFETs presenting very low switching losses. In addition all DC outputs feature a power quality within the aircraft standards specifications. The DC/DC converters are also easy to control and it is possible to regulate the output current during short circuits with the implemented  $i^2t$  protection. Thanks to the configuration of the DC/DC converters with an isolation transformer, the common mode voltage does not contain any harmonics of the supply frequency; however this is not the only advantage given by the galvanic isolation. The more significant advantage is that if a fault occurs on the load side of each single converter, it is possible to disable that particular converter without any extra electronics or mechanical devices, while the DC bus at 400V will still be available to feed the other DC outputs.

Another significant advantage of the proposed distribution system, over a fixed frequency AC generation system, is that it enables the elimination of complex mechanical coupling apparatus currently used to maintain the generator speed at a constant level, while the engines are operated at variable speed. In this way the presence of the TRU and ATRU (that normally work at low frequency <1k Hz) is avoided.

The total efficiency of 91-93% measured during the experimental tests is not particularly high. However there is considerable scope to improve this, since it is possible to increase the efficiency of the power electronic systems by increasing the number of MOSFETs and SiC diodes in parallel to reduce conduction losses [5]. It is also possible to reduce the losses of the passive elements, such as inductors and transformers, through an optimisation including efficiency size and weight, all of which are important targets in aircraft applications.

## 5. Conclusions

This paper has presented a novel compact AC/DC electrical distribution system for new generation aircraft featuring two dc buses at 28V and at +/-270V. The proposed distribution system only has one primary AC source (360-900Hz at 230V), while all the required dc voltage levels are derived from this primary source. All conversion stages needed

to generate the various output voltage levels are implemented using power converters assembled in one unit. Experimental results obtained from a 5 kW prototype, demonstrates that all the aircraft standard specifications regarding input and output power quality are met.

## 6. References

- [1] Mecrow, B., Cullen, J., and Mellor, P.: “Editorial - Electrical machines and drives for the more electric aircraft”, *Electric Power Applications*, IET, Volume: 5 , Issue: 1 , Publication Year: 2011 , Page(s): 1 – 2
- [2] Trentin, A., Zanchetta, P., Wheeler, P., and Clare, J.: “Power flow analysis in electro-mechanical actuators for civil aircraft”, *Electric Power Applications*, IET, Volume: 5 , Issue: 1 , Publication Year: 2011 , Page(s): 48 – 58
- [3] Cross, A., Baghrmian, A., and Forsyth, A.: “Approximate, average, dynamic models of uncontrolled rectifiers for aircraft applications”, *Power Electronics*, IET, Volume: 2 , Issue: 4 , Publication Year: 2009 , Page(s): 398 – 409
- [4] Jomier T., “Final-Public MOET Technical Report”, Dec 2009, website: [www.eurtd.com/moet](http://www.eurtd.com/moet)
- [5] Stupar , A.; Friedli , T.; Minibock, J., and Kolar, J. W.: “Towards a 99% Efficient Three-Phase Buck-Type PFC Rectifier for 400-V DC Distribution Systems”, *Power Electronics*, *IEEE Transactions on*, Volume: 27 , Issue: 4, Publication Year: 2012 , Page(s): 1732 – 1744
- [6] A. Pratt, P. Kumar, and T. V. Aldridge, “Evaluation of 400 V DC distribution in Telco and data centers to improve energy efficiency,” in *Proc. 29<sup>th</sup> Int. Telecommun. Energy Conf.*, Rome, Italy, Oct. 2007, pp-32-39
- [7] A. Matsumoto, A. Fukui, T. Takeda, K. Hirose, and M. Yamasaki, “Development of 400 Vdc power distribution system and 400 Vdc output rectifier ,” in *Proc. 31<sup>st</sup> Int. Telecommun. Energy Conf.*, Incheon, Korea, Oct. 2009, pp-1-5
- [8] Barruel, F., Retiere, N., Schanen, J.L., Caisley, A., “Stability Approach for Vehicles DC Power Network: Application to Aircraft On-board System”, *Power Electronics Specialists Conference*, 2005. PESC '05. IEEE 36<sup>th</sup>, Publication Year: 2005, Page(s): 1163 - 1169
- [9] Guanghai Gong, Heldwein, M.L., Drofenik, U., Minibock, J., Mino, K., and Kolar, J.W.: “Comparative evaluation



of three-phase high-power-factor AC-DC converter concepts for application in future More Electric Aircraft”, Industrial Electronics, IEEE Transactions on, Volume: 52 , Issue: 3 , Publication Year: 2005 , Page(s): 727 – 737

[10] Malesani, L., and Tenti, P.: “Three-Phase AC/DC PWM Converter with Sinusoidal AC Currents and Minimum Filter Requirements”, Industry Applications, IEEE Transactions on, Volume: IA-23 , Issue: 1, Publication Year: 1987 , Page(s): 71 - 77

[11] Nussbaumer, T., Baumann, M., and Kolar, J.W.: “Comprehensive Design of a Three-Phase Three-Switch Buck-Type PWM Rectifier”, Power Electronics, IEEE Transactions on, Volume: 22 , Issue: 2 , Publication Year: 2007 , Page(s): 551 - 562

[12] Nussbaumer, T., Heldwein, M.L., Guanghai Gong, Round, S.D., and Kolar, J.W.: “Comparison of Prediction Techniques to Compensate Time Delays Caused by Digital Control of a Three-Phase Buck-Type PWM Rectifier System”, Industrial Electronics, IEEE Transactions on, Volume: 55 , , Issue: 2, Publication Year: 2008 , Page(s): 791 - 799

[13] Heldwein, M.L., Nussbaumer, T., and Kolar, J.W.: “Common mode modelling and filter design for a three-phase buck-type pulse width modulated rectifier system”, Power Electronics, IET , Volume: 3 , Issue: 2 , Publication Year: 2010 , Page(s): 209 - 218

[14] Nussbaumer, T., Heldwein, M.L., and Kolar, J.W.: “Differential Mode Input Filter Design for a Three-Phase Buck-Type PWM Rectifier Based on Modeling of the EMC Test Receiver”, Industrial Electronics, IEEE Transactions on, Volume: 53 , Issue: 5 , Publication Year: 2006 , Page(s): 1649 – 1661

[15] Baumann, M., Nussbaumer, T., and Kolar, J.W.: “Comparative evaluation of modulation methods of a three-phase buck + boost PWM rectifier. Part I: Theoretical analysis”, Power Electronics, IET, Volume: 1 , Issue: 2 , Publication Year: 2008 , Page(s): 255 - 267

[16] Nussbaumer, T., Baumann, M., and Kolar, J.W.: “Comparative evaluation of modulation methods of a three-phase buck + boost PWM rectifier. Part II: Experimental verification”, Power Electronics, IET , Volume: 1 , Issue: 2 , Publication Year: 2008 , Page(s): 268 – 274

[17] Baumann, M., and Kolar, J.W.: “A novel control concept for reliable operation of a three-phase three-switch

buck-type unity-power-factor rectifier with integrated boost output stage under heavily unbalanced mains condition”,  
Industrial Electronics, IEEE Transactions on, Volume: 52 , Issue: 2 , Publication Year: 2005 , Page(s): 399 – 409

[18] Nussbaumer, T., and Kolar, J.W.: “Improving mains current quality for three-phase three-switch buck-type PWM rectifiers”, Power Electronics, IEEE Transactions on, Volume: 21 , Issue: 4 , Publication Year: 2006 , Page(s): 967 – 973

[19] Trentin, A., Zanchetta, P., Wheeler, P., and Clare, J.: “Performance evaluation of high-voltage 1.2 kV silicon carbide metal oxide semi-conductor field effect transistors for three-phase buck-type PWM rectifiers in aircraft applications” Power Electronics, IET, Volume: 5 , Issue: 9 Publication Year: 2012, Page(s): 1873 – 1881

[20] N. Moham, T. M. Undeland, W. P. Robbins, “Power Electronics”, Media Enhanced Third Edition

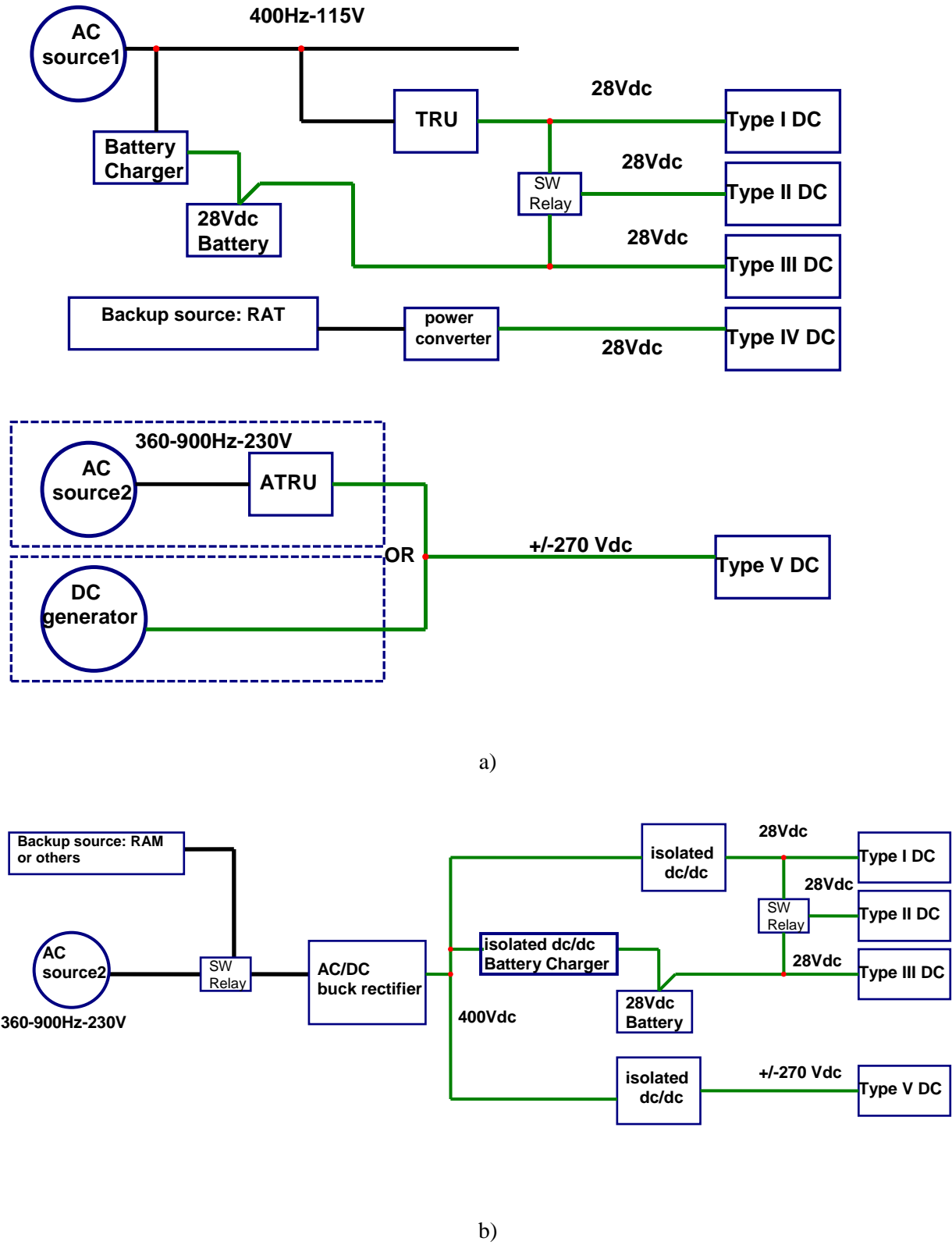


Figure 1-a) Typical Airplane AC/DC Distribution system b) The proposed Airplane AC/DC Distribution system

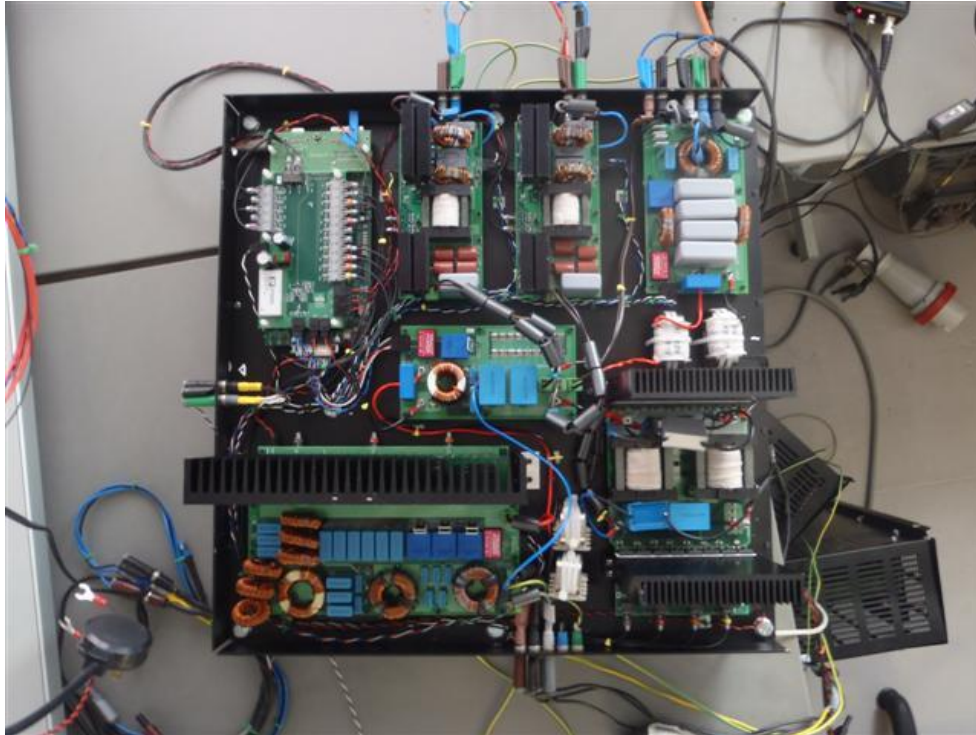


Figure 2-The prototype: 1) 3-phase PWM buck-type rectifier, 2) Main dc link capacitor (at 400V), 3) DC/DC converter, 400V to 28V, 15A, 4) DC/DC converter, 400V to 28V, 15A, 5) DC/DC converter, 400V to +/- 270V, 5A, 6) Digital control unit for all power electronic systems

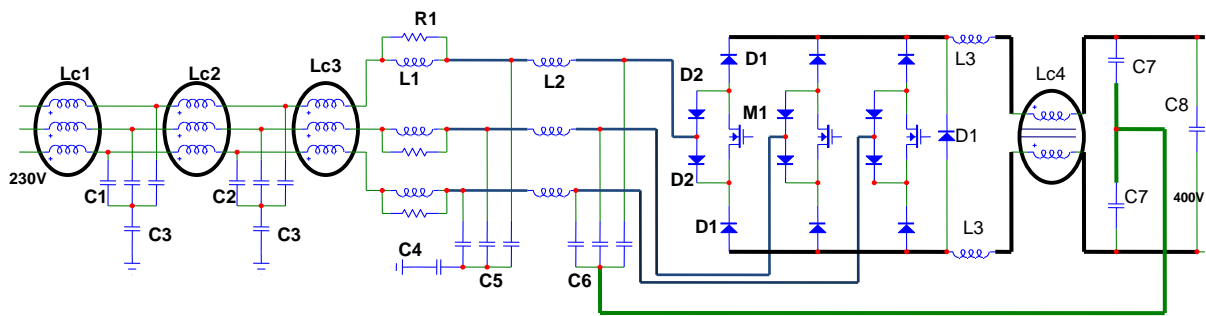


Figure 3-Schematic of the 3-Phase Buck-Type PWM Rectifiers

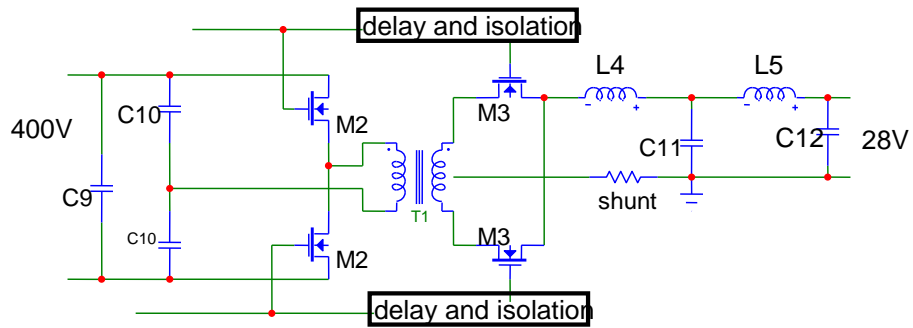


Figure 4-Schematic of the 28V DC/DC converter

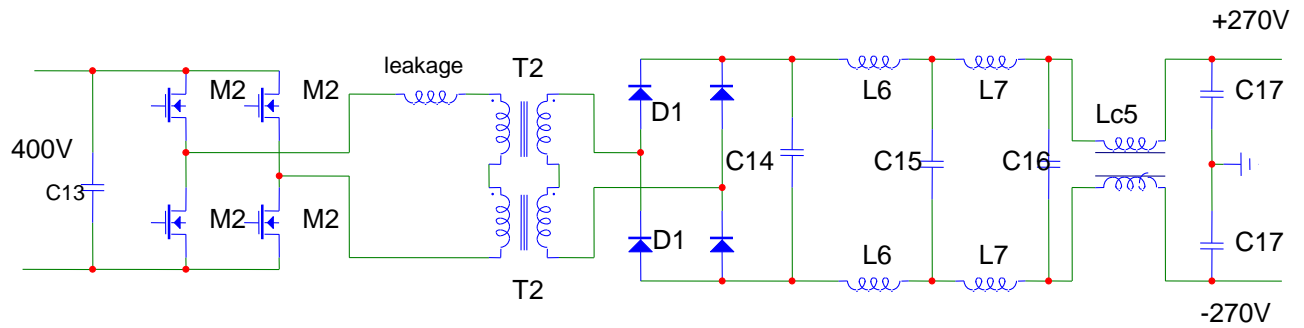


Figure 5-Schematic of the +/-270V DC/DC converter

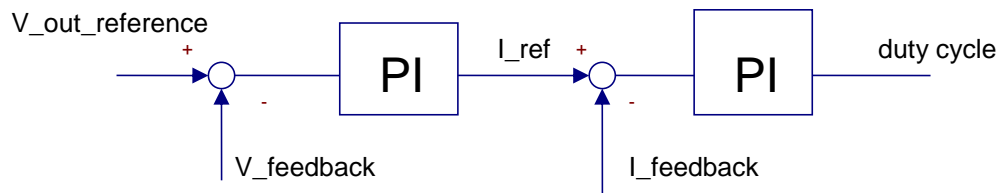


Figure 6-Control scheme for the dc/dc converters

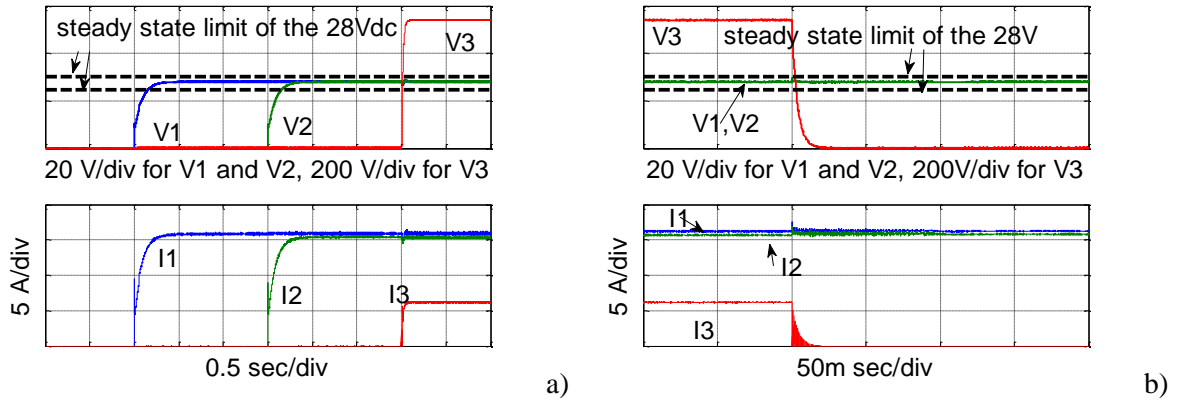
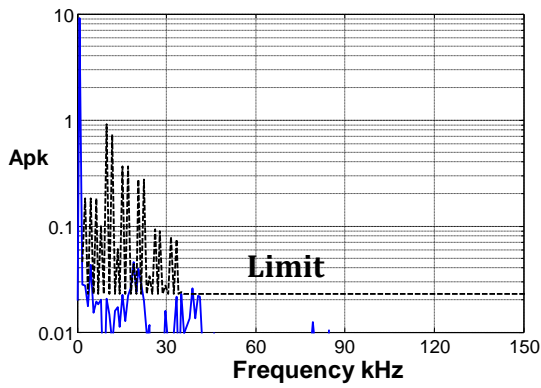
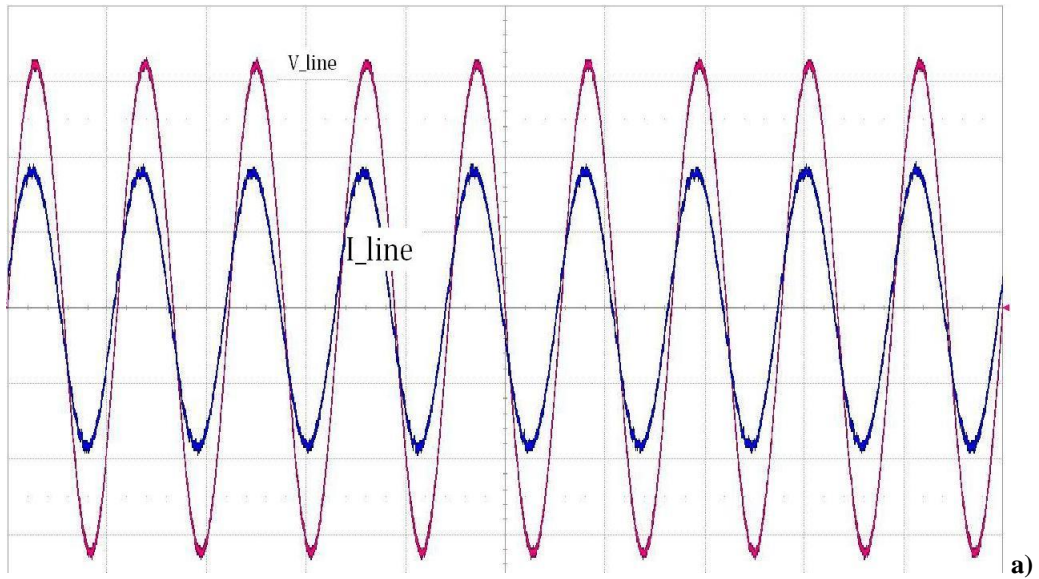
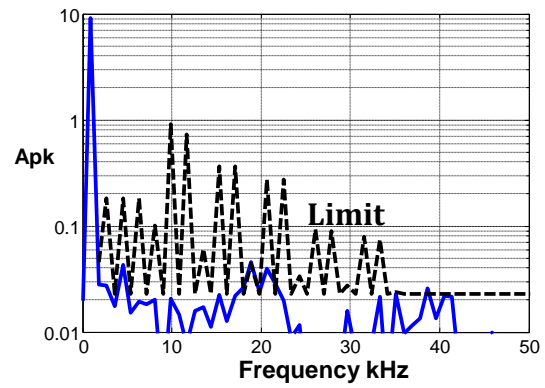


Figure 7-(a) Turn on transient from zero to nominal power, (b) turn off of the V3 output - upper plot, the 3 output voltages and the steady state limits of the 28V rail, lower plot - the 3 output currents.

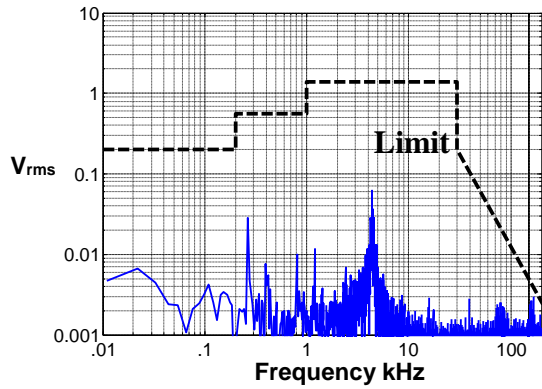
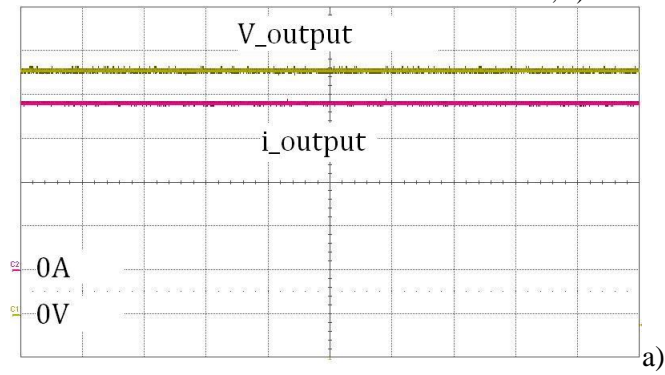


b)



c)

Figure 8 Input power quality: a) Line Voltage 100V/div, line current 5A/div, 1m sec/div, b) spectrum of the line current, c) Zoom of figure b)



b)

Figure-9: The 28V output characteristics a) output voltage 5V/div, output current 5A/div, 10m sec/div, b) spectrum of the 28V output voltage and its limit

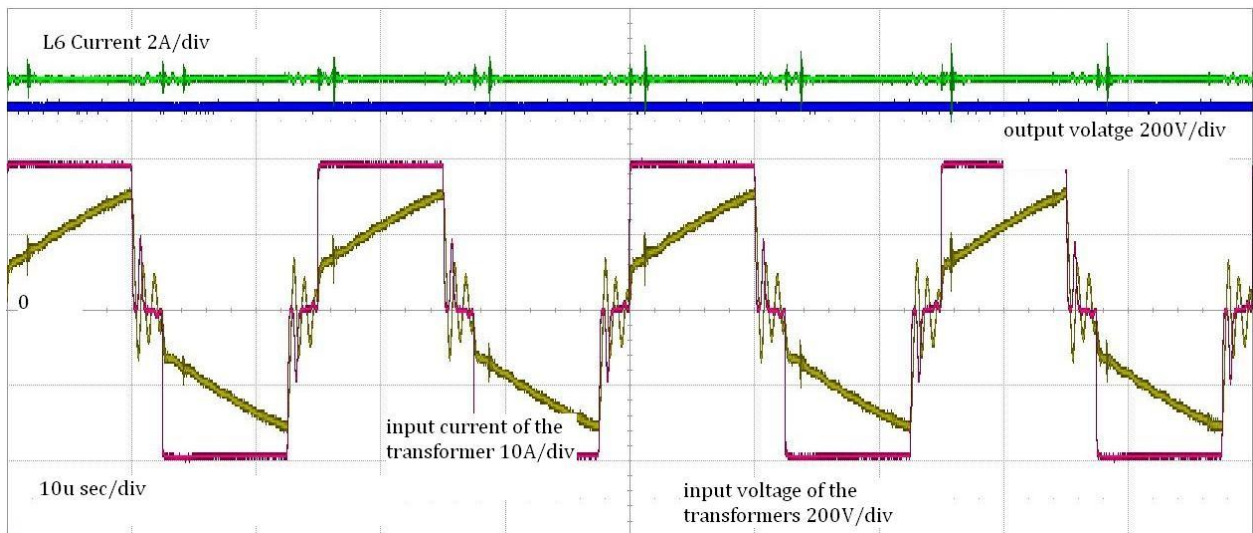


Figure 10-Performance of the high voltage dc/dc converter. From the top: output current (through L6); differential output and the input voltage and current of the transformers

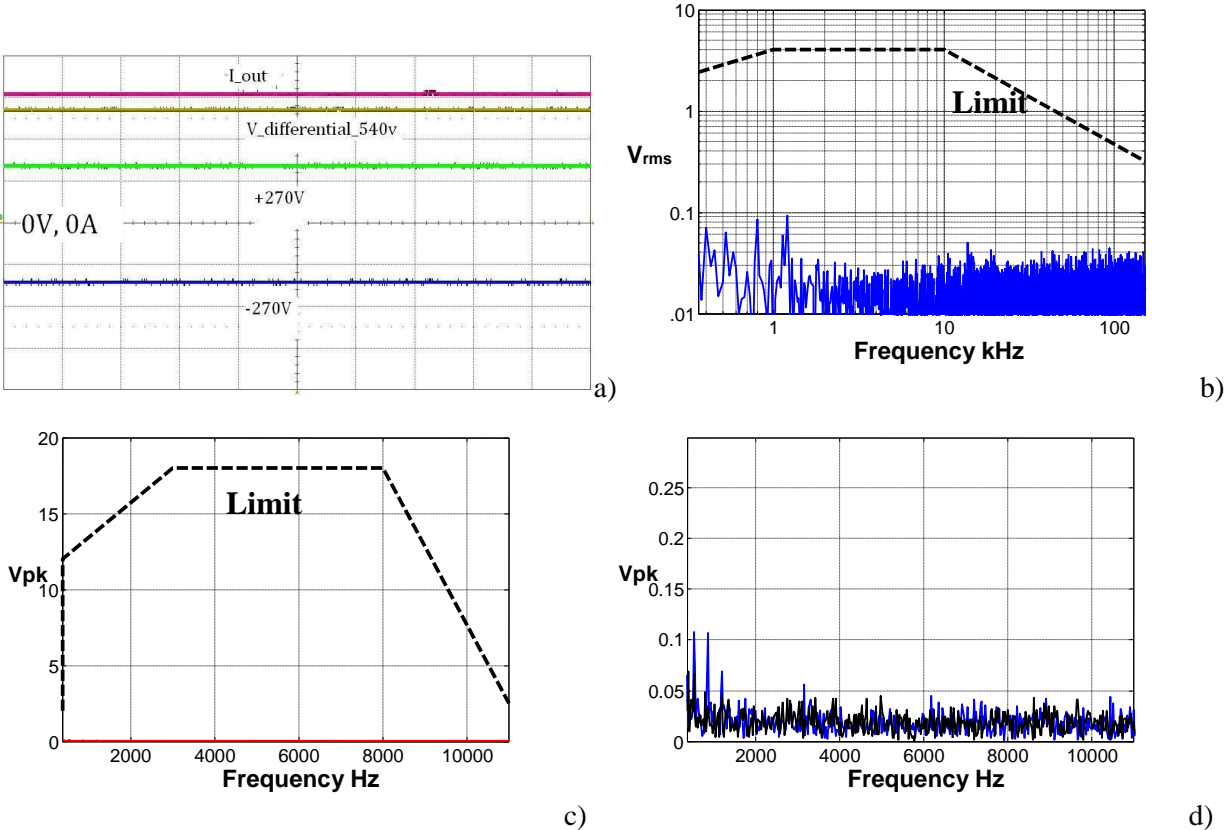
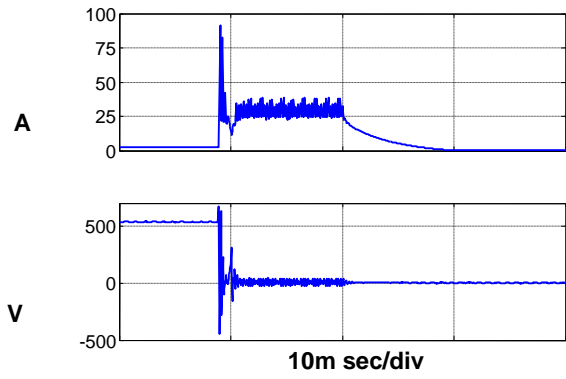
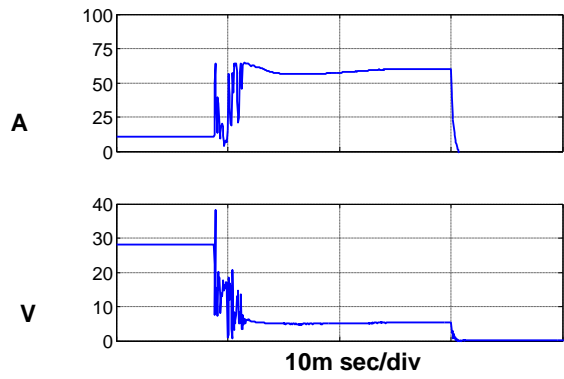


Figure-11: The +/-270V output characteristics a) voltage : common mode and differential mode 200V/div , output current 2A/div, 5m sec/div, b) spectrum of the differential voltage and its limit, c) spectrum of the common mode voltage and its limit, d) zoom of figure c.





a)



b)

Figure-12 The  $i_2t$  protection: a) for the high voltage dc output, b) for the low voltage output

**Table I Parameters of the input/output filter and devices used in the 3-phase buck type PWM rectifier**

Input filter		Output filter	
Lc1	3-phse common mode-2mH,TX51/32/11-3E27	L3	Differential mode-0.8mH, AMCC-16A
Lc2	3-phse common mode-55uH,58438-A2	Lc4	2-phase common mode-2.5mH,TX40/24/16,3E27
Lc3	3-phse common mode-35uH, 55439-A2	C7	100nF (B32652A6104J)
C1	100nF (B32652A6104J)	C8	40uF (2x B32926E3206M)
C2	470nF (B32653A6474J)		
C3	200nF (2xB32652A6104J)	Devices	
C4	200nF (2xB32652A6104J)	M1	MOSFET SiC,GE12S15S2, 1200V, 15A
C5	470nF (B32653A6474J)	D1	DIODE SiC, CD10120D, 1200V, 10A
C6	2uF (2xB32652A6105J)	D2	DIODE Si,30EPF12PbF,1200V,30A
L1	Differential mode-70uH, 55551-A2		
L2	Differential mode-125uH,55326-A2		
R1	10 $\Omega$ , 2W	Fsw	Switching frequency 80kHz

**Table II Parameters of the input/output filter and devices used in 28V output DC/DC converter**

Input filter		Output filter	
C9	4.7uF (BFC233841475)	L4	19uH, 58548-A2
C10	13.5uF (2xECWF268JA)	L5	11uH, 55326-A2
Devices		C11	44uF( 2xR60DR52205040J)
M2	MOSFE,T CoolMOS, IPW60R041C6, 600V,70A, $R_{DS}=37m\Omega$	C12	22uF( R60DR52205040J)
M3	MOSFET, Si, IRFP4568PbF,150V,170A, $R_{DS}=5m\Omega$	Fsw	Switching frequency 40kHz

**Table III Parameters of the input/output filter and devices used in +/-270V output DC/DC converter**

Input filetr		Output filter	
C13	40uF (B32926E3206M)	L6	Differential mode-0.9mH,AMCC-16A
Devices		L7	Differential mode-42uH, 55326-A2
M2	2x MOSFET CoolMOS, IPW60R041C6, 600V,70A, $R_{DS}=37m\Omega$	Lc6	Common mode,100uH,58438-A2
D1	DIODE, 2x CD20120D, 1200V, 20A	C14	9.4uF (2Xbfc233841475)
		C15	20uF (2xBFC233841106)
		C16	20uF (2xBFC233841106)
Fsw	Switching frequency 40k Hz	C17	470nF (B32653A6474J)

**Table IV Efficiency measurements of the distribution system**

Input	Test1-400[Hz]	Test2-400[Hz]	Test3-400[Hz]	Test4-800[Hz]
Vin [V]	229.7	229.7	229.6	229.6
Iin [A]	3.99	4.90	6.88	6.99
PF	.999	.999	.999	.995
Input Power [W]	2741	3367	4728	4785
Output				
V1 [V]	0	28.6	28.43	28.42
I1 [A]	0	19.4	16.8	16.8
Output Power 1[W]	0	555	478	477
V2 [V]	0	0	28.1	28.1
I2[A]	0	0	16.4	16.4
Output Power 2[W]	0	0	461	461
V3 [V]	543.8	544.6	543.5	548.9
I3[A]	4.68	4.69	6.21	6.29
Output Power 3[W]	2545	2554	3375	3453
TOTAL_OUTPUT_POWER	2545	3109	4314	4391
TOTAL_EFFICENY [%]	92.9	92.3	91.2	91.8

**Table V Efficiency measurements of the 3-phase buck-type PWM rectifier**

Input	Test1-400[Hz]	Test2-400[Hz]	Test3-400[Hz]	Test4-400[Hz]
Vin [V]	229.8	229.7	229.6	229.6
Iin [A]	3.55	4.51	5.8	6.63
PF	1	1	.999	.999
Input Power [W]	2447	3108	2991	4564
Output				
Vdc [V]	369.3	380.3	386.6	387.4
Idc [A]	6.36	7.86	9.93	11.35
Output power DC [W]	2349	2989	2991	4397
Efficiency [%]	96	96.2	96.2	96.3