

# Credit Constraints and Spillovers from Foreign Firms in China

September 7, 2015

## **Abstract**

This paper examines whether credit constraints affect Chinese firms' absorption of productivity spillovers originating from the activity of foreign-owned firms. Using firm-level data for 2001-2005, we find evidence of positive spillovers originating from foreign-owned firms from countries other than Hong Kong, Macau and Taiwan for non-state owned Chinese firms operating in the same industry and province. Using an index of external finance dependence to measure credit constraints, we find that only non state-owned firms operating in industries with external finance dependence below the index median exhibit significantly positive spillovers from the activity of foreign firms.

Keywords: foreign direct investment; knowledge spillovers; credit constraints; China.

JEL classification: F23; G31; O1; O33.

# 1 Introduction

In August 2012, Lenovo, the largest PC manufacturer in China, poached more than 40 laid-off employees from rival Motorola shortly after the latter announced its plan to cut 4,000 jobs globally. The main objective behind this move, according to Chen Wenhui, Lenovo’s general manager of phone R&D, was to take advantage of the former Motorola employees’ vast experience in overseas markets. Similarly, Google’s announcement that it was shutting down its search service Google.cn in 2010, resulted in a rush from its Chinese competitors to hire the company’s best staff.<sup>1</sup> While a large number of Chinese companies have enjoyed the opportunity of tapping into a pool of workers trained in cutting-edge global corporations as well as adapting these multinationals’ technology and management practices, a large number of firms, particularly privately-owned firms, are unable to take advantage of these type of positive external effects associated with the operation of foreign-owned firms, which we refer to from here on as spillovers from foreign activity.

In this paper we ask whether credit constraints hinder the ability of Chinese firms’ to benefit from productivity spillovers arising from the operation of foreign-owned firms. To address this research question, however, we first need to establish whether domestically-owned Chinese firms in our sample actually enjoy benefits or positive spillovers from a greater level of activity of foreign-owned firms.<sup>2</sup> Our first set of results provides evidence in support of spillovers from foreign activity to Chinese-owned firms operating in the same industry and province. Further inspection reveals that this positive average effect hides significant heterogeneity in the response of domestic producers to foreign firm activity, which depend both on the origin of capital sources for foreign firms and the ownership status of domestic firms. In particular, we find that: (i) only the activities of foreign firms that do not originate in Hong Kong, Macau or Taiwan (HMT) have a significantly positive effect on the value-added of Chinese firms and (ii) only non state-owned firms, i.e. privately and collectively-owned enterprises, enjoy spillovers from foreign activity.<sup>3</sup> These results conform with the received wisdom that a substantial number of HMT-based firms are established by Chinese entrepreneurs primarily to take advantage of fiscal incentives available to foreign-invested enterprises and also that state-owned enterprises facing ‘soft budget constraints’ and pursuing multiple economic and social objectives are less likely to adopt productivity-enhancing techniques diffusing from multinational firms (Abraham et al., 2010; Prasad and Wei, 2007; Bajona and Chu, 2010; Xu, 2011).

Our main result shows that credit constraints present a significant obstacle to the absorption of productivity spillovers originating from foreign firms by Chinese firms. Using a sectoral index of credit constraints proposed by Rajan and Zingales (1998), we find that non state-owned Chinese firms operating in industries with external finance dependence below the median of this index exhibit an elasticity of output with respect to foreign activity in the same industry and province

---

<sup>1</sup>[http://www.chinadaily.com.cn/business/2012-12/03/content\\_16054002.htm](http://www.chinadaily.com.cn/business/2012-12/03/content_16054002.htm).

<sup>2</sup>The surveys by Görg and Greenaway (2004) and Keller (2004) discuss in detail the problems associated with the empirical identification of spillovers from foreign direct investment; for the specific case of China, see Hale and Long (2011).

<sup>3</sup>The elasticity of real value-added with respect to foreign activity is statistically significant and of similar magnitude to what previous studies have found (see Jordaan, 2005; Haskel et al., 2007; Abraham et al., 2010).

of 0.047. On the other hand, credit-constrained firms, i.e. firms with external finance dependence above the median, do not benefit at all from the operation of nearby multinational firms in their own industry. This result has important policy implications. Governments in developing countries are keen on attracting foreign direct investment in technologically-intensive sectors. However, since these industries exhibit relatively high dependence on external finance, they might not provide the greatest benefits for local producers, unless financial markets are sufficiently developed to ensure the widespread absorption of productivity gains arising from the activities of foreign firms. Thus, this paper sheds light on the conditions that enable local firms to benefit from greater financial globalisation.

Our results are robust to alternative measures of credit constraints and firm-level performance measures, the use of lagged measures of inputs and foreign activity and various arrangements of clustering of standard errors. We also find that the negative relationship we establish between external finance dependence and spillovers from foreign activity is not capturing a relationship between the activity of foreign firms with sectoral characteristics other than credit constraints such as capital intensity or tradability.

Over the past two decades China has been one of the world's most important recipients of foreign direct investment (FDI), partly because of the size and growth of its internal market and its abundance of unskilled labour, but also because foreign firms have been attracted by a wide range of policies and incentives laid out by the Chinese government, e.g. generous fiscal schemes favouring foreign-invested enterprises and the establishment of special economic zones. The existence of positive spillovers arising as a by-product of the activities of multinational firms has frequently been used to justify the use of these policies. In this paper, however, we show that the presence and encouragement of foreign firms is not sufficient for domestic firms to benefit from the activities of foreign-owned firms.

Our finding that productivity gains from spillovers only accrue to local firms not facing credit constraints is of particular importance for China. The 2003 Investment Climate Survey carried out by the World Bank shows that privately-owned Chinese firms enjoy much less access to formal finance than firms in any other East Asian country. Several authors have pointed to the high level of state ownership characterising China's banking system as the main culprit behind this phenomenon, as a large share of credit is channeled towards state-owned enterprises to pursue political and social objectives (Brandt and Li, 2003; Cull and Xu, 2003; Allen et al., 2005). Consequently, as shown by Ayyagari et al. (2010), private Chinese firms are often forced to rely on small-scale, shorter-term sources of informal finance, which results in them experiencing slower growth than firms with access to bank credit. Our results show that lack of access to sources of external finance also hampers potential productivity gains for privately-owned firms arising from the operation of nearby foreign firms in the same industry.

Although this paper lies at the intersection of two well-established strands of literature, one exploring the impact of foreign direct investment in host economies and a second, investigating how financial development affects performance measures at the aggregate and microeconomic level,

there are still relatively few works focusing on the connections between these two research areas.<sup>4</sup> Our focus on firm-level implications of credit constraints complements the cross-country studies of [Rajan and Zingales \(1998\)](#) and [Alfaro et al. \(2004\)](#), which find that more developed financial markets act as a catalyst for the growth of industries that rely more on external finance and also boost the effect that foreign direct investment has on economic growth.

At a more disaggregated level, this paper is similar to [Javorcik and Spatareanu \(2009\)](#) and [Du and Girma \(2007\)](#), who find evidence that local firms' financial health affects their response to foreign activity across a wide range of outcomes. [Javorcik and Spatareanu \(2009\)](#) show that Czech firms that are less affected by liquidity constraints are more likely to self-select into becoming multinationals' suppliers. [Du and Girma \(2007\)](#) find that export-oriented FDI increases the likelihood of exporting for privately-owned Chinese firms, particularly those with access to bank credit, whereas domestic market-oriented FDI has a negative effect on the probability that these firms start to export. The paper most closely related to ours is [Villegas-Sanchez \(2009\)](#), which finds that large firms located in more financially developed regions in Mexico enjoy greater productivity spillovers from FDI. In contrast to her results, we do not find evidence that the way in which credit constraints affect domestic firms' ability to appropriate spillovers from foreign activity differs across the size distribution of firms.

Unlike the papers described above, all of which rely on firm-level financial indicators, we use the industry-level index of external finance dependence developed by [Rajan and Zingales \(1998\)](#) to identify credit constraints. The use of a 'frontier technology' measure, which reflects the outcome of efficient market conditions, has the attraction of being exogenously determined (i.e. unaffected by local decisions) which helps us in overcoming the endogeneity problem that might arise at the moment of identifying firms facing credit constraints.

The rest of the paper is organised as follows: Section 2 summarises the theoretical underpinnings for the existence of spillovers arising from the activity of foreign firms; Sections 3 and 4 describe our data and empirical methodology respectively; Our main results and robustness checks are presented in Section 5; Section 6 concludes.

## 2 Spillovers from foreign firms

Two central features that characterise ideas, defined in a very broad sense, are their non-rival nature and the fact that they are only imperfectly excludable.<sup>5</sup> These two characteristics imply that some of the benefits arising from the development of new ideas can accrue to parties other than their creator. Therefore, third parties might enjoy 'spillover' benefits from using an idea without

---

<sup>4</sup>The link between foreign direct investment and foreign firm activity on host country outcomes such as productivity, employment and industrial structure is summarised by [Navaretti and Venables \(2006\)](#); [Levine \(2005\)](#) reviews the extensive body of work studying the link between finance and growth.

<sup>5</sup>This broad definition of ideas includes, but is not limited to, blueprints of new goods, innovations to production processes that reduce production costs, industry-specific 'trade secrets' such as lists of suppliers and clients, prices and terms of delivery and intangible managerial practices, e.g. the use of performance reviews and incentive schemes to motivate employees.

acquiring it in a market transaction. From a theoretical standpoint, knowledge spillovers have been shown to be a crucial force driving sustained economic growth (Grossman and Helpman, 1991; Aghion and Howitt, 1992; Jones, 2005), as well as shaping market structure at the industry level and individual firms' productivity (Dasgupta and Stiglitz, 1980; Spence, 1984; Vives, 2008).

Because the vast majority of innovation activity takes place in only a handful of developed countries (see Eaton and Kortum, 1999), governments across the world have, especially over the last three decades, actively sought to attract foreign direct investment (FDI) not only because of its direct contribution to capital formation but also with the expectation that the operation of multinational firms would facilitate the diffusion of foreign technology and ideas towards domestic producers.<sup>6</sup> Typical examples of policies aimed at attracting foreign multinationals include tax holidays, lenient labour and environmental regulations, streamlined enterprise registration procedures, among other advantages. China has relied intensively on these instruments, especially through the establishment of special economic zones as noted by Naughton (1996) and Defever and Riaño (2012), but it also has employed more 'direct' methods to elicit the diffusion of knowledge such as preconditioning access to its domestic market to foreign firms in exchange for direct handovers of technology, as documented by Holmes et al. (2013).

Findlay (1978) provides the first theoretical account in which FDI generates positive spillovers in host countries. His model features two key elements that have remained central for the subsequent literature: (i) foreign capital embodies more advanced technology, management techniques and know-how which are unavailable to firms in the relatively 'backward' host country, and (ii) domestic producers, however, can improve their efficiency through their exposure to FDI. The first assumption is founded on the observation that the technological advantage of multinational firms is a necessary condition to successfully operate in unfamiliar foreign markets while at the same time incurring the higher organisational costs associated with international production. The rationale for a potential positive effect of foreign firms' activity on local producers follows from the work of Polanyi (1958) and Arrow (1969), who argue that an important component of knowledge is not codifiable (either because the problem-solver cannot fully define what he or she is doing, or because it is prohibitively costly to do so). This in turn implies that the diffusion of knowledge occurs more effectively through personal contact and demonstration facilitated by operating in close proximity to the innovator. Findlay (1978) shows in his model that the growth rate of technology in the host country is positively affected by foreign capital inflows and that this positive spillover effect from FDI is stronger the greater the technology gap is between the two countries.

Although the non-rival nature of knowledge assumed by Findlay (1978) suggests that ideas can be easily and costlessly transferred across countries,<sup>7</sup> Cohen and Levinthal (1990) argue that local firms' ability to assimilate new ideas and apply them to commercial means depend on their

---

<sup>6</sup>See Keller (2004) for an extensive review about the process of international technology diffusion and the channels through which it takes place.

<sup>7</sup>Mansfield and Romeo (1980) provide one of the earliest accounts documenting the extent and speed with which U.S. multinational firms transfer their technology to their foreign subsidiaries; more recently, Bloom and Van Reenen (2007), using cross-country data, find that multinational firms often transplant their management techniques to their subsidiaries overseas.

‘absorptive capacity’, which is dependent on a firm’s stock of knowledge capital.<sup>8</sup> However, since the latter is not directly observable, it is common to use a country or a firm’s skilled employment or R&D intensity to proxy it (Girma, 2005).

One can, however, take a broader view of absorptive capacity and include factors other than human capital and R&D activity in shaping a firm’s ability to adapt new ideas and techniques from foreign firms. Our argument is that the extent of credit constraints can be considered an important feature of a firm’s absorptive capacity. Easier access to external finance allows firms to invest in long-term projects which in turn help them accumulate both physical and knowledge capital (see Ayyagari et al., 2011).

### 3 Data

The data used in this study is drawn from the annual accounting reports in the Oriana database compiled by Bureau Van Dijk. It covers over 20,000 manufacturing firms for the period 2001-2005. The sample consists of relatively few small firms with annual sales above Yuan 1 million, and a majority of large firms with annual turnover above Yuan 5 million. The firms in our sample account for approximately 35% of total manufacturing value-added and 18% of manufacturing employment in China.

The dataset contains information on value-added, employment, input costs, geographic location, industry of operation and foreign ownership status, distinguishing whether the source of foreign investment originates from Hong Kong, Macau and Taiwan or elsewhere. Thus, we consider a firm to be foreign-owned if foreign capital participation in it exceeds 25%.<sup>9</sup> After cleaning the data, our sample comprises 78,509 firm-year observations, of which 40% approximately are foreign-owned enterprises.<sup>10</sup> Table 1 presents the definition of all variables used in the paper and Table 2 provides summary statistics for our sample.

In order to identify credit-constrained firms in our sample, we rely on the industry-level (ISIC-3 digit) index of external finance dependence (EFD) proposed by Rajan and Zingales (1998) and made available by Braun (2003). This index is constructed as the share of capital expenditures not financed with cash flow from operation for the median publicly-listed firm in each 3-digit industry in the United States averaged over the 1980s.<sup>11</sup> Because the U.S. has one of the most sophisticated

---

<sup>8</sup>Keller (1996) incorporates the notion of absorptive capacity into an endogenous growth model. He shows that in order for the gains from greater trade openness (due to the acquisition of new technologies from abroad) to be sustained a country needs to accumulate skills at a higher rate than before the regime change.

<sup>9</sup>The National Bureau of Statistics of China considers an enterprise to be foreign-funded if at least 25% of the company’s registered capital is of foreign origin in the case of limited liability corporations and Chinese-foreign equity joint ventures. Exceptions include cooperative joint ventures in which the proportion of capital to be contributed by each of the parties to the venture is stipulated by contract and the wholly-foreign owned enterprises where the entire capital comes from foreign investors.

<sup>10</sup>Following Chen and Guariglia (2011), we drop observations with negative sales, negative total assets minus total fixed assets, negative total assets minus liquid assets; and negative accumulated depreciation minus current depreciation.

<sup>11</sup>Cash flow from operations is defined as the sum of cash flow from operations plus decreases in inventories, decreases in receivables, and increases in payables.

Table 1: Variable description and sources

Variable	Description and sources
<b>Firm level</b>	
Output ( $Y_{ijpt}$ )	Real value added. Oriana database, Bureau Van Dijk.
Capital ( $K_{ijpt}$ )	Real value of tangible fixed assets. Oriana database, Bureau Van Dijk.
Labour ( $L_{ijpt}$ )	Number of employees. Oriana database, Bureau Van Dijk.
<b>Industry-province level</b>	
Foreign activity ( $\text{Foreign}_{jpt}$ )	Total value-added by foreign-owned firms within an industry-province cell in a given year. Value added of foreign firms from the Oriana database, Bureau Van Dijk.
Foreign activity, Hong Kong, Macau and Taiwan ( $\text{Foreign}_{jpt}^{\text{HMT}}$ )	Total value added from foreign firms originating from Hong Kong, Macau and Taiwan in an industry-province cell in a given year. Oriana database, Bureau Van Dijk.
Foreign activity, other countries ( $\text{Foreign}_{jpt}^{\text{other}}$ )	Total value added from foreign firms originating from countries other than Hong Kong, Macau and Taiwan in an industry-province cell in a given year. Oriana database, Bureau Van Dijk.
<b>Industry level</b>	
External finance dependence ( $\text{EFD}_j$ )	Share of capital expenditures not financed with internal funds for the median publicly-listed U.S. firm in each 3-digit industry for the 1980s. The index is developed by <a href="#">Rajan and Zingales (1998)</a> and was made available by <a href="#">Braun (2003)</a> .
External finance dependence, 1970 ( $\text{EFD}_j^{1970}$ )	Same as above but calculated using data for the 1970s. From <a href="#">Braun (2003)</a> .
External finance dependence, Canada ( $\text{EFD}_{j,\text{CAN}}^{1980}$ )	Same as above but calculated using data for Canadian firms for the period 1982-1990. From <a href="#">Rajan and Zingales (1998)</a> .
Tangibility index	An index calculated as the median level of the ratio of net property, plant and equipment to the book value of assets of all U.S. based companies in a given industry, based on Compustat's annual industrial files for the period 1986-1995. From <a href="#">Braun (2003)</a> .
Capital intensity index	An index calculated as the median level of the ratio of fixed assets to number of employees in a given industry for U.S. Firms in Compustat for the period 1980-99. From <a href="#">Kroszner et al. (2007)</a> .
Liquidity index	An index calculated as the median level of the ratio of inventories to sales for all active U.S.-based companies in Compustat's annual industrial files for the period 1980-99. From <a href="#">Kroszner et al. (2007)</a> .
Durability index	An index which takes the value one if a 3-digit industry manufactures predominantly durable goods, and zero otherwise. From <a href="#">Kroszner et al. (2007)</a> .
Investment goods producer index	An index calculated as the ratio investment/(investment+consumption) using data from the 1998 BEA Input-Output table at the 3-digit industry level. This measure captures whether an industry is specialised in the production of investment goods relative to consumption goods. From <a href="#">Braun and Larrain (2005)</a> .
Tradability index	An index calculated as the ratio trade/(trade+domestic use), where trade is defined as exports plus imports, and domestic use is defined as consumption plus investment, either private or public at the 3-digit industry level based on data from the BEA use tables. A higher value means that the industry specialises in the production of tradable goods. From <a href="#">Braun and Larrain (2005)</a> .
<b>Province level</b>	
Deflators	Both the GDP and capital goods deflators are taken from the <i>China Statistical Yearbook</i> (various issues), published by the National Bureau of Statistics of China.

The subscripts  $i$ ,  $j$ ,  $p$ , and  $t$  index firms, 3-digit industries, provinces and years respectively.



Table 2: Summary statistics

	No. obs.	Mean	Median	Std. dev
Firm level				
All domestic firms				
Real value added	48,075	531.92	181.28	2,290.25
Employment	54,836	1,276.31	603	3,144.38
Capital	54,836	762.89	173.48	4,463.09
State-owned domestic firms				
Real value added	12,097	890.56	250.37	3,795.84
Employment	14,716	2,220.85	1,041	5,314.02
Capital	14,716	1,557.48	408.95	6,549.01
Non state-owned domestic firms				
Real value added	35,978	411.31	164.02	1,451.47
Employment	40,120	929.86	513	1,645.89
Capital	40,120	471.43	126.43	3,343.35
Industry-province level				
Foreign	2,597	67,14.07	970.70	23,853.78
Foreign <sup>other</sup>	2,229	5,298.09	899.36	17,838.71
Foreign <sup>HMT</sup>	1,859	3,026.90	510.64	10,424.51
Industry level				
EFD	28	0.24	0.21	0.33
EFD <sup>1970</sup>	27	0.04	0.06	0.18
EFD <sup>1980</sup> <sub>CAN</sub>	21	0.25	0.34	0.43
Tangibility index	28	0.30	0.29	0.14
Capital intensity index	28	35.71	22.12	44.40
Liquidity index	28	0.16	0.16	0.05
Durability index	28	0.46	0.00	0.51
Investment goods producer index	28	0.18	0.01	0.27
Tradability index	28	0.51	0.50	0.25

financial systems in the world and the EFD index is constructed using data for publicly-listed firms, it should closely reflect firms' optimal choice for external finance in an unconstrained environment. This index has been widely used as a proxy for the extent of financial constraints (Kroszner et al., 2007; Beck et al., 2008; Manova, 2013).

The theoretical underpinning of the EFD index is that key factors determining a firm's demand for external funds, such as project scale, gestation and cash harvest periods, and the requirement for continuing investment are intrinsic to the production technology available in the firm's industry. Thus, firms operating in sectors characterised by larger minimum scale requirements, longer gestation periods, higher R&D intensity or working capital needs are more likely to face credit constraints. Based on the EFD index, industries identified to be heavily reliant on external finance include plastic products, machinery and professional equipment whereas sectors like tobacco, footwear, and clothing are in the lower end of the ranking.

Because the underlying determinants of the demand for external finance vary substantially across industries while remaining relatively stable across countries and over time within the same industry, we can use the U.S.-based index to identify sectors in China that are more likely to face



Table 3: Firm differences across ownership and external finance dependence

Mean	Ownership		External finance dependence	
	Foreign	Domestic	Below median	Above median
Employment	915.16	1,233.32 <sup>a</sup>	1,273.74	1,277.69
Real value added	575.31	530.71 <sup>a</sup>	627.37	444.81 <sup>a</sup>
Real sales	2,385.40	1,927.48 <sup>a</sup>	2,104.23	1,680.72 <sup>a</sup>
Value added/employee	0.87	0.57 <sup>a</sup>	0.63	0.52 <sup>a</sup>
Total Factor Productivity (TFP)	43.14	34.08 <sup>a</sup>	29.68	25.24 <sup>a</sup>
Number of firms	8,003	12,967	6,175	6,941

<sup>a</sup>, <sup>b</sup>, <sup>c</sup> mean that the variable of interest is significantly different from 0 at 1, 5 and 10 percent level respectively, across the ownership and external finance dependence categories. Total Factor Productivity (TFP) is calculated using the [Levinsohn and Petrin \(2003\)](#) methodology. The comparison of outcomes above and below the median external finance dependence is conducted for the sample of domestic firms.

credit constraints. The raw correlation between the EFD index based on U.S. data for the 1980s and its counterpart for Canada during the same period stands at 0.59, while the correlation between the U.S. index in the 1970s and 1980s is 0.63 (see Table A.1); rank correlations among the three indices are all above 0.43. Reassuringly, [Rajan and Zingales \(1998\)](#) and [Braun \(2003\)](#) also note that the EFD index varies substantially more between sectors than among firms within the same industry.

The characteristics of firms in our sample conform with the ownership and access to finance premia evidence available for other countries ([Antràs and Yeaple, 2013](#); [Campello et al., 2010](#)). Table 3 shows that foreign-owned firms are on an average larger in terms of value-added and sales (although they are smaller in terms of employment) and more productive than their Chinese-owned counterparts. Similarly, domestically-owned firms producing in sectors with low external finance dependence outperform firms that are more likely to face credit constraints. This preliminary evidence is consistent with the findings of [Chen and Guariglia \(2011\)](#) who, using different measures, show that credit constraints also have detrimental effects on the performance of Chinese firms in terms of asset growth and productivity.

## 4 Baseline specifications and estimation methodology

The first step in our empirical analysis involves establishing the existence of spillovers arising from the activity of foreign firms on their domestically-owned counterparts in the same industry and province. To do so, we follow [Aitken and Harrison \(1999\)](#) and [Javorcik \(2004\)](#) by estimating a Cobb-Douglas production function augmented to account for spillovers from the presence of foreign firms. Therefore our first estimating equation is:

$$\ln Y_{ijpt} = \alpha + \beta_K \ln K_{ijpt} + \beta_L \ln L_{ijpt} + \gamma \ln \text{Foreign}_{jpt} + \phi_i + \phi_t + \varepsilon_{ijpt}, \quad (1)$$

where the subscripts  $i$ ,  $j$ ,  $p$  and  $t$  index firms, industries, provinces and years respectively.  $Y_{ijpt}$  denotes real value-added and  $K_{ijpt}$  and  $L_{ijpt}$  are capital and labour inputs respectively.<sup>12</sup> Our measure of spillovers arising from foreign activity,  $\text{Foreign}_{jpt}$ , is defined as total real value-added accounted for foreign-owned firms in the same industry and province as firm  $i$  in a given year;  $\phi_i$  and  $\phi_t$  are firm and year-specific fixed effects, and  $\varepsilon_{ijpt}$  is a random error term which might be correlated over time within firms (standard errors are clustered at the firm-level).<sup>13</sup>

Taking the same industry-province cell to be the reference ‘spillover pool’ assumes that productivity spillovers from foreign firms are more likely to be quantitatively important for domestic firms operating in close proximity to their foreign counterparts in the same industry. This assumption is supported by the findings of [Wei and Liu \(2006\)](#) and [Girma and Gong \(2008\)](#), who show that spillovers from foreign direct investment in China are more pronounced within regions and geographical industrial clusters than across firms within the same region operating across different industries. Therefore, to the extent that domestic firms benefit from the scale of operation of foreign firms in the same province and industry, the parameter  $\gamma$  is expected to be positive and significant. Our choice of estimating a value-added rather than a gross output production function follows [Feenstra et al. \(2011\)](#), who argue that the former is preferable in the case of China given the prevalence of export processing activities which tend to be intensive in the use of imported intermediate inputs.

The intuition behind our empirical specification is that the (potentially) more advanced technological capabilities or efficient organisational structure of foreign-owned firms gradually leaks out of the boundaries of the firm and can thus be absorbed by local producers. These spillovers might take place through a variety of channels which include, but are not limited to (i) direct imitation/demonstration effects ([Das, 1987](#); [Wang and Blomstrom, 1992](#)); (ii) tougher competition putting pressure on firms to ‘trim down their fat’ in order to remain in the market ([Blomstrom and Kokko, 1998](#); [Aitken and Harrison, 1999](#)); (iii) through vertical linkages that facilitate the contact between multinational customers and domestic firms ([Javorcik, 2004](#)) and (iv) labour turnover from foreign to domestic-owned firms ([Fosfuri et al., 2001](#)). Although some of these channels might be operative through the continuous interaction between domestic and foreign firms in product and labour markets, the focus of this paper is on whether the existence and magnitude of spillovers from foreign activity experienced by Chinese firms is mediated by the degree of credit constraints they face. For instance, integrating into a multinational supply chain might necessitate a domestic firm to retool its production facilities or improve the quality of its output; similarly, attracting new personnel employed in nearby multinationals could also put pressure on payroll costs. Therefore, tighter credit constraints might preclude firms from enjoying positive external effects brought about by the operation of foreign firms.

---

<sup>12</sup>Firm-level value-added and our measure of foreign-firm activity are both deflated using province-level GDP deflators, while capital is deflated using a province-level deflator for fixed capital formation available from China’s Statistical Yearbook.

<sup>13</sup>Tables A.3 and A.9 show that our results are robust to more conservative clustering arrangements of standard errors, i.e. single clustering at the industry-province level and two-way clustering at the industry and province levels.

We use regression (1) not only to establish the existence of spillovers from foreign-owned firms in our sample, but also to ascertain whether the source of investment for foreign firms or the ownership structure of local firms affect the magnitude of the spillover effects. For instance, it is likely that there is a greater scope for the diffusion of productivity-enhancing knowledge from foreign-owned firms originating from developed countries than from Chinese-owned shell corporations based in Hong Kong, Macau and Taiwan (HMT) engaged in ‘round-tripping’ aimed at taking advantage of preferential tax treatment targeted towards foreign firms (Prasad and Wei, 2007). However, it is also possible that foreign firms originating in HMT play a role in connecting Chinese producers to foreign customers by establishing distribution links or by providing information on foreign tastes and preferences, since Hong Kong, Macau and Taiwan are home to a large number of subsidiaries of corporations based in developed countries. Thus, we re-estimate equation (1) including separately the total value-added accounted for foreign firms originating from Hong Kong, Macau and Taiwan in an industry-province cell,  $\text{Foreign}_{jpt}^{\text{HMT}}$ , and the total value-added from foreign firms originating elsewhere,  $\text{Foreign}_{jpt}^{\text{other}}$ .

Similarly, the ownership structure of domestic firms can be an important factor influencing their decision to internalise productivity-enhancing ideas from nearby foreign firms. For instance, state-owned enterprises (SOE) facing a soft budget constraint are more likely to be poorly managed and less likely to adopt innovations and managerial and organisational techniques from foreign firms.<sup>14</sup> We classify domestically-owned firms in two groups: SOEs and non-state-owned enterprises, the latter including both privately-owned firms and collective-owned enterprises, and we estimate regression (1) for each subsample. Previous work classifies firms according to their largest ownership type in a given year. However, according to Sun et al. (2002), the Chinese government uses a ‘state ownership scheme’, which means that if the assets of a SOE are not completely sold to private investors, the SOE is still not considered fully privatised and therefore is still required to conform with communist public ownership principles. Hence, to take this institutional feature into consideration, we identify a domestic firm to be state-owned if the paid-in-capital contributed by the state is strictly positive, following Dollar and Wei (2007). The remaining firms are classified as non-state owned enterprises, and we allow domestic firms to switch ownership status across years.

To investigate whether the extent of credit constraints affects the magnitude of spillovers accruing to domestically-owned Chinese firms, we augment regression (1) with an interaction term between our measure of foreign activity in an industry-province cell and the industry-level index of external finance dependence described in Section 3. Thus, our main empirical specification is:

$$\ln Y_{ijpt} = \alpha + \beta_K \ln K_{ijpt} + \beta_L \ln L_{ijpt} + \gamma_0 \ln \text{Foreign}_{jpt}^{\text{other}} + \gamma_1 \left( \ln \text{Foreign}_{jpt}^{\text{other}} \times \text{EFD}_j \right) + \phi_i + \phi_t + \varepsilon_{ijpt}. \quad (2)$$

Based on the results obtained from estimating regression (1), which are discussed in the follow-

---

<sup>14</sup>See Qian and Xu (1998) for a theoretical analysis of innovation under soft budget constraints and Girma and Gong (2008) for empirical evidence documenting the lack of productivity improvements among Chinese SOEs generated by multinational linkages.

ing section, we use the total value-added accounted for by non-HMT, foreign-owned firms as our measure of spillovers when we estimate regression (2) for the group of non state-owned domestic firms. As a robustness check we also estimate (2) using two different variants of the external finance dependence index, one calculated using 1970s U.S. data from [Braun \(2003\)](#) and the second based on data for Canadian firms between 1982 and 1990 from [Rajan and Zingales \(1998\)](#). We also test the continuous conditioning model in (2) against a dichotomous specification in which the sample is split at the median level of the EFD index, thus allowing for differential (but constant) effects above and below this threshold.<sup>15</sup>

Other studies have explored how financial conditions shape domestic firms' response to the exposure to multinational firms, while also employing different measures of credit constraints. For instance, [Javorcik and Spatareanu \(2009\)](#) use investment's sensitivity to cash flow as their proxy for credit constraints to explore whether these affect Czech firms' decision to become suppliers of multinational firms. A potential drawback of using the sensitivity of investment to cash flow is that, as pointed out by [Strebulaev and Whited \(2012\)](#), this measure is neither sufficient nor necessary for the existence of finance constraints. [Du and Girma \(2007\)](#) find that exposure to export-oriented foreign direct investment, increases the probability of becoming an exporter for privately-owned Chinese firms, in particular for those with access to bank credit. The use of firm-level variables to capture financial constraints as in the previously mentioned papers, is likely to result in endogeneity problems if similar variables were included in equation (2), e.g. if access to bank credit is easier for highly productive firms.

In a paper closely related to ours, [Villegas-Sanchez \(2009\)](#) investigates whether financial development affects the size of FDI spillovers in Mexico, and also faces a similar endogeneity problem when measuring financial development at the regional level. Her financial development ranking is based on the estimated coefficients of regional dummies in a linear probability model predicting the probability that a firm would report being unable to purchase machinery and equipment due to lack of financing. Her measure might reflect the fact that that highly productive firms are less likely to report being financially constrained.<sup>16</sup> The use of a 'technology frontier' measure of external finance dependence based on data for a highly developed financial market overcomes these problems in our estimation.

One concern that arises when estimating (2) is that our measure of external finance dependence might be capturing other industry-specific characteristics also affecting the level foreign activity, despite the fact that at first glance external finance dependence is only weakly correlated with other sectoral characteristics (see Table A.1). For instance, [Braun and Larrain \(2005\)](#) find that industries that are highly dependent on external finance are also characterised by large scale of operation, long gestation periods, high R&D intensity or high working capital needs (e.g. to maintain higher inventories). Therefore, ignoring these mechanisms, would bias the coefficient  $\gamma_1$  in (2) upwards. To

---

<sup>15</sup>Unfortunately, the unbalanced nature of our panel prevents us from using the more sophisticated endogenous threshold modelling approach developed by [Hansen \(1999\)](#).

<sup>16</sup>She instruments regional financial development with the share of indigenous population in each region at the beginning of the twentieth century.

deal with this potential omitted variable bias, we add interaction terms between our foreign activity variable and a host of other industry characteristics in order to verify that our main interaction term,  $\text{Foreign}_{jpt}^{\text{other}} \times \text{EFD}_j$  remains significant.

## 5 Results

Table 4 presents the estimates of the fixed-effects regression (1) across all domestic firms as well as for the subsamples split across the two types of foreign firms, (originating in Hong Kong, Macau or Taiwan (HMT) and elsewhere (other)), and domestic ownership status (state and non state-owned). The coefficients on capital and labour are both statistically significant and their magnitude is consistent with other estimates using Chinese firm-level data (Feenstra et al., 2011). Because the Hansen-Sargan test of overidentifying restrictions reported at the bottom of Table 4 strongly rejects a random effects model in favour of a fixed effects specification, all remaining regressions are estimated using fixed effects.

Our measure of foreign activity, i.e. the total value-added accounted for by foreign-owned firms in a given province-industry cell, is positive and statistically significant at 1%, which we interpret as evidence in favour of spillovers. The point estimate reported in column 1 indicates that a ten percent increase in the total value-added of foreign firms is associated with a 2.4 percent higher value-added for domestically-owned firms operating in the same industry-province. The magnitude of the estimated elasticity of output with respect to foreign activity is comparable to the estimates found by Jordaan (2005) for Mexico, Haskel et al. (2007) for the UK and Wei and Liu (2006), Buckley et al. (2002) and Abraham et al. (2010) for China, in the range of 0.01-0.05.

Our finding of positive and significant spillovers from foreign activity is robust to a number of different econometric specifications presented in Appendix A. These include the addition of other time-varying firm-level characteristics such as firm’s age and export status (Table A.2); clustering of standard errors at the province-industry level and two-way clustering at the province *and* industry level (Table A.3);<sup>17</sup> allowing the coefficients of capital and labour to vary at the 2-digit industry (Table A.4) and using total factor productivity (TFP) (estimated using the Levinsohn and Petrin (2003) algorithm in the first stage) as the dependent variable (Table A.5) as in Girma and Gong (2008), Javorcik and Spatareanu (2009) and Abraham et al. (2010).

We then proceed to disentangle the average net positive spillovers according to the source of investment of foreign-owned firms. In particular, we investigate whether the operation of multinationals from Hong Kong, Macau and Taiwan (HMT) generates positive spillovers for domestically-owned Chinese firms. The estimates presented in columns 2 and 3 of Table 1 show that the existence of positive spillovers is mainly driven by the operation of firms with investments originating outside HMT. Based on these findings, the results reported in columns 4 and 5 also show that non state-owned firms are the ones benefitting the most from the presence of foreign firms. The lack of evidence of significant spillovers for state-owned firms is consistent with previous findings by

---

<sup>17</sup>The former allows firms’ production function residuals to be correlated within province-industry cells, while the latter produces standard errors that are robust to correlation along either dimension.

Table 4: Spillovers from foreign activity

	Value-added				
	All domestic firms			State-owned	Non state-owned
	(1)	(2)	(3)	(4)	(5)
Capital	0.199 <sup>a</sup> (0.011)	0.194 <sup>a</sup> (0.011)	0.194 <sup>a</sup> (0.012)	0.272 <sup>a</sup> (0.037)	0.191 <sup>a</sup> (0.012)
Labour	0.559 <sup>a</sup> (0.018)	0.559 <sup>a</sup> (0.018)	0.564 <sup>a</sup> (0.019)	0.530 <sup>a</sup> (0.062)	0.556 <sup>a</sup> (0.019)
Foreign	0.024 <sup>a</sup> (0.008)				
Foreign <sup>other</sup>		0.018 <sup>b</sup> (0.007)		0.016 (0.015)	0.019 <sup>b</sup> (0.009)
Foreign <sup>HMT</sup>			0.011 (0.007)		
Constant	0.512 <sup>a</sup> (0.131)	0.604 <sup>a</sup> (0.129)	0.343 <sup>a</sup> (0.130)	-0.053 (0.421)	0.673 <sup>a</sup> (0.141)
No. of observations	40,537	38,479	34,859	8,354	30,219
No. of firms	11,521	11,135	10,323	3,020	9,435
R-squared	0.231	0.230	0.239	0.147	0.255
Sargan-Hansen statistic	465.19 <sup>a</sup>	471.83 <sup>a</sup>	487.45 <sup>a</sup>	59.10 <sup>a</sup>	495.86 <sup>a</sup>

Robust standard errors clustered at the firm level in parenthesis. <sup>a</sup>, <sup>b</sup>, <sup>c</sup> significantly different from 0 at 1, 5 and 10 percent level respectively. All regressions include firm and year fixed effects. Capital is measured as the real value of tangible fixed assets. Labour is measured as the number of employees. FDI is measured as the total value-added by foreign-owned firms within an industry-province pair in a given year. Foreign<sup>HMT</sup> is measured as the total value-added accounted for foreign firms originating from Hong Kong, Macau and Taiwan (HMT) in an industry-province cell. Foreign<sup>other</sup> is measured as the total value-added from foreign firms not originating in HMT in an industry-province pair. The Sargan-Hansen statistic is an overidentifying restrictions test which is robust to heteroskedasticity and clustering. A rejection of the null hypothesis indicates that a fixed effects model is preferred to a random effects model.

Girma and Gong (2008) and Hale and Long (2011). Since we do not find evidence of productivity spillover benefits arising from foreign firms originating from HMT or accruing to state-owned firms, the remaining of the analysis focuses on whether credit constraints mediate the spillovers generated by the activity of non-HMT firms on non-state-owned, domestic Chinese producers.

We now proceed to address our main research question: do credit constraints prevent domestic Chinese firms from realising positive productivity spillovers arising from the activity of foreign-owned firms? Our findings indicate that credit constraints indeed prevent Chinese firms in industries above the median level of external finance dependence from enjoying any significant gains from the operation of foreign firms in the same industry and province. Table 5 presents the estimates from regression (2). The interaction term between the activity of foreign firms in an industry-province cell and the Rajan and Zingales (1998) industry-level measure of external finance dependence (EFD) is statistically significant at the 1% level, regardless of whether we use the continuous index or a dummy variable splitting industries at the median of the EFD index. This effect is also robust to

Table 5: Credit constraints and spillovers from foreign activity

	Value-added of non state-owned domestic firms					
	EFD (1)	EFD <sup>1970</sup> (2)	EFD <sup>1980</sup> <sub>CAN</sub> (3)	EFD (4)	EFD <sup>1970</sup> (5)	EFD <sup>1980</sup> <sub>CAN</sub> (6)
Foreign <sup>other</sup>	0.043 <sup>a</sup> (0.012)	0.024 <sup>b</sup> (0.010)	0.059 <sup>a</sup> (0.012)	0.047 <sup>a</sup> (0.012)	0.032 <sup>a</sup> (0.012)	0.056 <sup>a</sup> (0.012)
Foreign <sup>other</sup> × EFD	-0.097 <sup>a</sup> (0.025)	-0.078 (0.048)	-0.136 <sup>a</sup> (0.026)			
Foreign <sup>other</sup> × EFD dummy				-0.067 <sup>a</sup> (0.016)	-0.027 <sup>c</sup> (0.016)	-0.097 <sup>a</sup> (0.017)
No. of observations	30,219	29,735	26,123	30,219	29,735	26,123
No. of firms	9,435	9,290	8,154	9,435	9,290	8,154
R-Squared	0.256	0.255	0.254	0.256	0.255	0.255

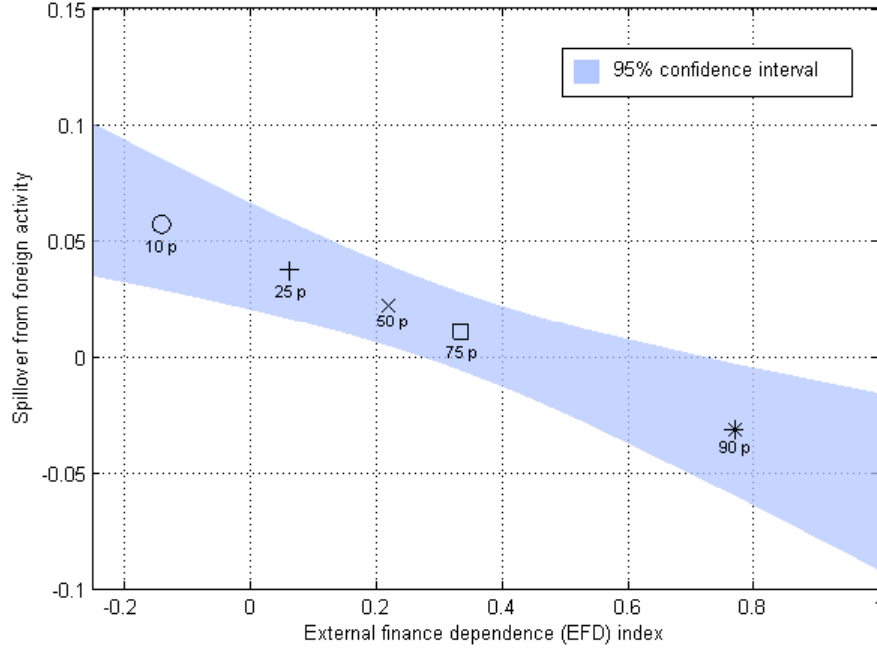
Robust standard errors clustered at the firm level in parenthesis. <sup>a</sup>, <sup>b</sup>, <sup>c</sup> significantly different from 0 at 1, 5 and 10 percent level respectively. All regressions include firm and year fixed effects. The coefficients on capital and labour are not reported to save space. Foreign<sup>other</sup> is measured as the total real value-added from foreign firms not originating in HMT in an industry-province cell. EFD is the external finance dependence index constructed as the share of capital expenditures not financed with cash flows from operation for the median publicly-listed firm in each 3-digit industry in the United States averaged over the 1980s. EFD<sup>1970</sup> is calculated in the same way as EFD but data is averaged over the 1970s. Both, EFD and EFD<sup>1970</sup> are constructed by [Rajan and Zingales \(1998\)](#) and made available by [Braun \(2003\)](#). EFD<sup>1980</sup><sub>CAN</sub> is calculated in the same way as the other two measures but using Canadian data averaged over the period 1982 and 1990. The index was developed and made available by [Rajan and Zingales \(1998\)](#).

the use of different variants of the the EFD index, the only exception being the use of the continuous index based on U.S. data for the 1970s, although in this case, the interaction is just marginally insignificant at the 10% level.

The negative sign of the coefficient associated with the interaction term means that firms operating in industries characterised by higher external finance requirements would benefit less from foreign-firm spillovers than comparable firms in low-EFD sectors. This result can be clearly seen in Figure 1, which plots the predicted elasticity of domestic value-added with respect to foreign activity (together with a 95% confidence interval) in a given industry-province pair as a function of the industry's external finance requirements. The figure shows that firms in industries such as footwear or manufacture of leather products, which are approximately in the 10th percentile of the EFD index exhibit an elasticity of their value-added with respect to foreign activity of approximately 0.06, which is significantly different from zero; on the other hand, firms producing electrical machinery or professional and scientific equipment, activities which require substantial amounts of external finance, can even be adversely affected by greater foreign firms' activity.



Figure 1: The effect of credit constraints on spillovers from foreign firms



The figure presents the estimated elasticity of real value-added with respect to the activity of foreign firms not originating from Hong Kong, Macau or Taiwan for non state-owned domestic firms for selected quantiles of the external finance dependence index. Each symbol in the figure represents the corresponding percentile of the external finance dependence index (e.g. 'x' denotes the median and  $\square$  the 75th percentile of the EFD index). The figure is based on the estimates presented in column (1) of Table 5.

Using a dummy variable splitting industries at the median EFD in column 4 of Table 5, indicates the existence of positive spillovers for non-SOE domestic firms in industries with external financial dependence below the median, confirming the results depicted in Figure 1. The dichotomous specification is our preferred one based on the J-test proposed by Davidson and MacKinnon (1981) which rejects the linear specification in favour of the exogenous sample splitting at the median model (see Table A.6). This test involves re-estimating regression (2) including the linear prediction of the competing model in each regression (continuous interaction and exogenous sample splitting).<sup>18</sup> We interpret this result as suggestive of a threshold effect determining whether non state-owned Chinese domestic firms can benefit from the activities of foreign firms, i.e. firms unconstrained to access external finance enjoy the spillover benefits, while constrained firms are shut down from this channel for productivity gains. Girma (2005) provides empirical evidence in support of threshold

<sup>18</sup>Under the null hypothesis that the linear continuous interaction model explains the variation in the data better than the exogenous sample splitting model, the predicted power obtained from the linear prediction of the latter should appear as insignificant when added to the former model. Analogously, under the null hypothesis that the exogenous sample splitting fits the data better, then the linear prediction of the continuous interaction model would be statistically insignificant when added to the exogenous sample splitting regression.

effects of FDI spillovers for domestic firms in the UK.

Our result that credit constraints constitute an important dimension of domestic firms' absorptive capacity to benefit from spillovers from foreign-owned firms is akin to the finding by [Alfaro et al. \(2004\)](#) that foreign direct investment plays an important role in contributing to economic growth in countries with more developed financial markets. Our result is also consistent with the findings of [Villegas-Sanchez \(2009\)](#) for Mexico showing that firms located in more financially-developed regions stand to achieve greater productivity gains from the operation of foreign firms.

An important issue that arises in interpreting the results from regression (2) is whether we truly are measuring cross-industry variation on the tightness of credit constraints, or if on the other hand, we are capturing other industry characteristics that are correlated with the activity of foreign firms.

For instance, [Defever and Riaño \(2012\)](#) show that local governments in China actively encourage the operation of foreign firms focused on exporting activities using fiscal incentives channeled through special economic zones. However, it is also the case that firms operating in highly tradable industries are characterised by longer delivery lags and more complex inventory management ([Alessandria et al., 2010](#)), which makes tradability strongly positively correlated with EFD at the industry level. Thus, our estimated negative coefficient for the interaction term  $\text{Foreign}^{\text{other}} \times \text{EFD}$  might be picking up the fact that a greater level of activity by export-oriented multinationals could result in a tougher competitive environment and lower production by domestic Chinese firms. If this was indeed the case, we would expect that including an additional interaction term between our industry-province measure of foreign activity and an industry-level index of tradability should render the coefficient of interest,  $\gamma_1$ , in regression (2) statistically insignificant.

We carry out this robustness exercise using a wide set of indices measuring industry characteristics besides tradability, which include tangibility, durability, liquidity and an indicator for industries that primarily produce investment goods drawn from [Braun and Larrain \(2005\)](#) and [Kroszner et al. \(2007\)](#), all of which are calculated using data for publicly-listed firms in the U.S., just as our index for credit constraints.<sup>19</sup>

A greater degree of tangibility, which is a measure based on the share of total assets accounted for net property, plant and equipment, should, everything else equal, facilitate a firm's access to external finance as asset hardness reduces the uncertainty regarding a firm's pledgeable assets. Thus, we would expect domestic Chinese firms in highly tangible industries to enjoy positive, net spillovers from nearby non-HMT foreign firms in the same industry as they would be able to raise the required external finance by pledging hard assets as collateral. Similarly, we would expect firms in capital-intensive sectors, producing goods that are durable, tradable and for investment purposes to realise greater spillovers from multinational activity.

Our finding that only firms operating in industries characterised by low dependence on external finance enjoy spillovers from foreign firms remains statistically and economically significant after controlling for the interaction of a wide range of industry characteristics and the extent of foreign

---

<sup>19</sup>The correlation between EFD and the other industry characteristics we investigate ranges from -0.17 with respect to the liquidity index to 0.38 for the investment goods producer index.

Table 6: Is external finance dependence measuring other industry-level characteristics?

	Value-added of non state-Owned domestic firms						
	(1)	(2)	(3)	(4)	(5)	(6)	(7)
Foreign <sup>other</sup>	0.047 <sup>a</sup> (0.012)	0.018 (0.016)	-0.007 (0.018)	0.050 <sup>a</sup> (0.013)	0.019 (0.013)	0.045 <sup>a</sup> (0.012)	0.036 <sup>b</sup> (0.017)
Foreign <sup>other</sup> × EFD	-0.067 <sup>a</sup> (0.016)	-0.051 <sup>a</sup> (0.016)	-0.022 (0.019)	-0.065 <sup>a</sup> (0.017)	-0.077 <sup>a</sup> (0.016)	-0.083 <sup>a</sup> (0.020)	-0.061 <sup>a</sup> (0.017)
Foreign <sup>other</sup> × tangibility dummy		0.036 <sup>b</sup> (0.016)					
Foreign <sup>other</sup> × capital intensity dummy			0.065 <sup>a</sup> (0.019)				
Foreign <sup>other</sup> × liquidity dummy				-0.006 (0.017)			
Foreign <sup>other</sup> × durability dummy					0.053 <sup>a</sup> (0.016)		
Foreign <sup>other</sup> × investment goods producer dummy						0.028 (0.021)	
Foreign <sup>other</sup> × tradability dummy							0.015 (0.017)
No. of observations	30,219	30,219	30,219	30,219	30,219	30,219	30,219
No. of firms	9,435	9,435	9,435	9,435	9,435	9,435	9,435
R-squared	0.256	0.256	0.256	0.256	0.256	0.256	0.256
F-test of equality of interaction terms		20.10 <sup>a</sup>	24.51 <sup>a</sup>	4.38 <sup>b</sup>	25.67 <sup>a</sup>	8.90 <sup>a</sup>	16.55 <sup>a</sup>

Robust standard errors clustered at the firm level in parenthesis. <sup>a</sup>, <sup>b</sup>, <sup>c</sup> significantly different from 0 at 1, 5 and 10 percent level respectively. All regressions include firm and year fixed effects. The coefficients on capital and labour are not reported to save space. Tangibility is an indicator calculated as the median ratio of net property, plant and equipment to the book value of assets of all US based companies in a given industry, calculated from Compustat's annual industrial files for 1986-1995 (Braun, 2003). Capital intensity is an indicator defined as the median level of the ratio of fixed assets over number of employees of US firms in Compustat for the period 1980-1999 (Kroszner et al., 2007). Liquidity is an index calculated as the median level of liquidity needs for all active US based companies in the industry calculated from Compustat's annual industrial files for 1980-1999 (Kroszner et al., 2007). Durability is an index of whether firms in an industry produce predominantly durable goods, using the classification of US industries provided by the US Bureau of Economic Analysis (Kroszner et al., 2007). Investment goods producer is an indicator which measures how tilted towards investment goods relative to consumption goods an industry is (Braun and Larrain, 2005). Tradability is constructed as the ratio trade/(trade+domestic use), where trade is defined as exports plus imports, and domestic use is defined as consumption plus investment, either private or public (Braun and Larrain, 2005). The dummy for each index takes the value 1 if an industry has an index value above the median, (0.29 for the Tangibility index; 22.12 for the Capital intensity index; 0.16 for the Liquidity Index; 0.305 for the Investment goods producer index and 0.495 for the Tradability index). Foreign<sup>other</sup> is measured as the total value-added from foreign firms not originating in Hong Kong, Macau or Taiwan in a given industry-province cell.

Table 7: Using lagged inputs and foreign activity

	Value-added							
	All domestic firms			State-owned		Non state-owned domestic firms		
	(1)	(2)	(3)	(4)	(5)	(6)	(7)	(8)
Capital <sub>t-1</sub>	0.088 <sup>a</sup> (0.011)	0.087 <sup>a</sup> (0.011)	0.085 <sup>a</sup> (0.012)	0.014 (0.036)	0.094 <sup>a</sup> (0.012)	0.094 <sup>a</sup> (0.012)	0.094 <sup>a</sup> (0.012)	0.092 <sup>a</sup> (0.012)
Labour <sub>t-1</sub>	0.194 <sup>a</sup> (0.019)	0.193 <sup>a</sup> (0.020)	0.197 <sup>a</sup> (0.020)	0.046 (0.060)	0.210 <sup>a</sup> (0.020)	0.204 <sup>a</sup> (0.020)	0.204 <sup>a</sup> (0.020)	0.205 <sup>a</sup> (0.020)
Foreign <sub>t</sub>								0.025 <sup>c</sup> (0.015)
Foreign <sub>t-1</sub>	0.018 <sup>c</sup> (0.010)							
Foreign <sub>t-1</sub> <sup>other</sup>		0.022 <sup>b</sup> (0.009)		-0.001 (0.020)	0.026 <sup>b</sup> (0.010)	0.043 <sup>a</sup> (0.014)	0.042 <sup>a</sup> (0.013)	0.054 <sup>a</sup> (0.014)
Foreign <sub>t-1</sub> <sup>HMT</sup>			-0.004 (0.009)					
Foreign <sub>t</sub> <sup>other</sup> × EFD								-0.082 <sup>b</sup> (0.036)
Foreign <sub>t-1</sub> <sup>other</sup> × EFD						-0.075 <sup>a</sup> (0.028)		-0.082 <sup>a</sup> (0.029)
Foreign <sub>t-1</sub> <sup>other</sup> × EFD dummy							-0.042 <sup>b</sup> (0.019)	
Constant	3.521 <sup>a</sup> (0.156)	3.328 <sup>a</sup> (0.147)	3.541 <sup>a</sup> (0.148)	5.197 <sup>a</sup> (0.516)	3.308 <sup>a</sup> (0.157)	3.398 <sup>a</sup> (0.160)	3.418 (0.162)	3.126 <sup>a</sup> (0.186)
No. of observations	28,864	27,347	24,914	5,784	21,626	20,543	20,543	20,215
No. of firms	10,188	9,783	9,019	2,499	8,213	7,867	7,876	7,707
R-Squared	0.049	0.049	0.049	0.010	0.067	0.070	0.070	0.070

Robust standard errors clustered at the firm level in parenthesis. <sup>a</sup>, <sup>b</sup>, <sup>c</sup> significantly different from 0 at 1, 5 and 10 percent level respectively. All regressions include firm and year fixed effects. Capital<sub>t-1</sub> is measured as the real value of tangible fixed assets. Labour<sub>t-1</sub> is measured as the number of employees. Foreign<sub>t-1</sub> is measured as the total value-added for foreign-owned firms within an industry-province cell in a given year. Foreign<sub>t-1</sub><sup>other</sup> is measured as the total value-added accounted for foreign firms not originating from Hong Kong, Macau or Taiwan (HMT) in an industry-province cell. FDI<sub>t-1</sub><sup>HMT</sup> is measured as the total value-added from foreign firms originating in HMT in an industry-province pair.

activity at the province-industry level. The interaction between foreign firms' value-added and EFD is negative and statistically significant at the 1% level when we control for all other interaction terms one by one, with the exception of the capital-intensity.<sup>20</sup> The magnitude of the estimated coefficient for the interaction between foreign activity and external finance dependence is quite similar across all our specifications. Thus, we are confident that the results presented in Table 5 reflect the fact that operating in an environment with tighter credit constraints reduces substantially the scope for domestic firms to realise external productivity gains arising from the operation of foreign firms.

### Further robustness checks

We conduct a battery of robustness checks analogous to the one used for regression (1). Controlling for age and export status (Table A.8), clustering of standard errors at higher levels of aggregation (Table A.9), more flexible estimation of the production function parameters (Table A.10) and using total factor productivity as our dependent variable (Table A.11) all yield estimated interaction terms of similar magnitude as those presented in Table 5, and in all cases statistically significant at the 1% level.

Our finding that external finance dependence is a fundamental factor in a firm's capacity to benefit from its interaction with foreign firms, indicates that productivity spillovers do not occur automatically and might take time to materialise. Thus, Table 7 presents estimates of regressions (1) and (2) using lagged inputs and a lagged measure of foreign activity.

This empirical specification is also useful to deal with the potential endogeneity of foreign activity. Simultaneity bias could occur if foreign firm activity increases because the productivity of domestic producers in the same industry-province cell increases. As [Liu \(2008\)](#) and [Hale and Long \(2011\)](#) point out, this bias is of greater concern when the measures of domestic and foreign activity are at the same level aggregation. In our empirical specification, it is plausible to assume that individual firms' performance does not affect aggregate foreign activity at the province-industry level. Moreover, our inclusion of firm fixed effects should control for time-invariant unobservable characteristics attracting foreign firms to a particular province or industry. Additionally, the use of lagged foreign activity should reduce any concerns of endogeneity problems arising from simultaneity bias. [Keller \(2004\)](#) in its review of the empirical literature that seeks to identify productivity spillovers from foreign direct investment also notes that this type of endogeneity problem does not appear to be very important for the estimation of productivity spillovers at the firm level.

The main message from Tables 4 and 5 still carries through. We find evidence of positive spillovers from the activity of non-HMT multinationals accruing to non state-owned Chinese firms. Just as in our benchmark results shown in Table 4, the activity of multinationals originating from Hong Kong, Macau or Taiwan does not improve the productivity of domestic firms and state-owned enterprises do not enjoy productivity spillovers from non-HMT foreign firms, in contrast to their

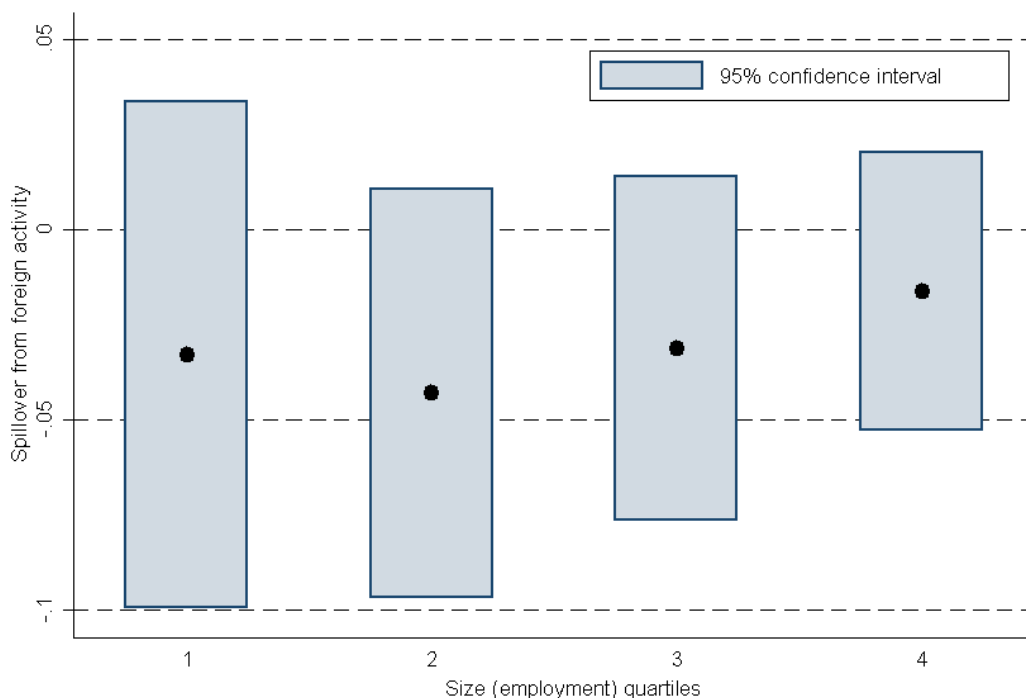
---

<sup>20</sup>Although the coefficient estimate on  $\text{Foreign}^{\text{other}} \times \text{EFD}$  is statistically insignificant, the test of equality of interaction terms shows that its effect is different from the interaction between capital intensity and EFD. Moreover, this interaction appears as statistically significant when the term  $\text{Foreign}^{\text{other}} \times \text{capital intensity dummy}$  is introduced as a continuous interaction term (see Table A.7).

non-SOE counterparts.

The results presented in columns (6) and (7) of Table 7 show again, that only non state-owned firms not facing credit constraints (operating in sectors with low dependence on external finance) receive positive productivity effects from the operation of non-HMT foreign firms in the same industry and province, regardless of whether we use a continuous measure of external finance dependence or an exogenous sample split at the median EFD. Column (8) includes both contemporaneous and lagged effects of foreign activity and its interaction with EFD. Foreign activity in the previous year has a much stronger effect on domestic firms' value-added than the level of contemporaneous value-added of foreign firms; however the magnitude of the interaction term between foreign activity and external finance dependence contemporaneously and with one-year lag is virtually identical. At the median EFD, the elasticity of domestic firms' value added with respect to foreign activity in the same industry and province taking place the year before is 0.037; in contrast, the elasticity with respect to the current level of foreign activity is not statistically different from zero.

Figure 2: The effect of credit constraints on spillovers across the size distribution



The figure presents the estimated elasticity of real value-added with respect to the activity of foreign firms not originating from Hong Kong, Macau or Taiwan for non state-owned domestic firms with external finance dependence above the median level of the EFD index. Black circles denote the point estimate of the elasticity of domestic firms' value-added with respect to foreign activity from non-HMT firms.

Lastly, we investigate whether the mediating effect of credit constraints on spillovers from foreign activity is sensitive to firm size. [Aterido et al. \(2011\)](#) using firm-level data for a large set of developing countries find evidence of significant non-linear effects of firm size on access to finance.

On the one hand, one would expect small firms to be on average farther away from the technology frontier and thus have a greater scope to benefit from knowledge spillovers from foreign firms as in [Findlay \(1978\)](#); on the other hand, small firms tend to be younger and their expected profitability is more uncertain than that of larger, more established firms. Therefore, if the absorption of spillovers necessitates costly investments, the negative effect that credit constraints have on spillovers from foreign activity should be more pronounced for small firms.

To investigate the existence of size-based non-linearities on the effect of credit constraints on domestic firms' absorption of spillovers from foreign firms, we run regression (2) separately for each quartile of the size distribution in our sample; Figure 2 presents the estimated elasticity of domestic value-added with respect to foreign activity for each size category. Our results do not indicate the existence of significant non-linearities on the effect of credit constraints on foreign spillovers for local firms. Although the magnitude of the point-estimate for this elasticity follows a U-shape across size quartiles, none of the estimates are statistically different from zero. Therefore, our result that firms with external finance dependence above the median do not benefit from spillovers from foreign activity does not depend on firm size.

One possible explanation for this finding is that the majority of firms in our sample are actually quite large in terms of their annual turnover. If, as noted by [Aterido et al. \(2011\)](#), non-linearities are most important for micro and small establishments, this effect would not be evident in our regression results. Also, the results of this exercise need to be interpreted with caution because the use of a sample-splitting criterion (employment in this case) which might be endogenous to the estimating equation, could produce misleading results (see [Bond and Van Reenen, 2007](#)). This would be the case if, for instance, productivity shocks unobserved by the econometrician affect a firm's hiring – the traditional simultaneity bias arising in the estimation of production functions.

## 6 Conclusions

Using a panel of large Chinese manufacturing firms for 2001-2005, we find that non-state owned, domestic Chinese firms benefit from positive spillovers arising from the operation of foreign firms originating outside Hong Kong, Macau and Taiwan. However, this positive average effect masks the fact that only firms not facing credit constraints are able to enjoy positive spillovers from the activity of foreign-owned firms. More specifically, these benefits only accrue to firms operating in sectors with low demand for external finance. We also provide evidence in favour of a threshold effect on the role that credit constraints play on mediating the impact of foreign activity on local firms' value-added and productivity; namely, domestic firms for which external finance dependence is below the median of our sectoral index of credit constraints (e.g. firms in the footwear or leather goods manufacture industries) enjoy positive spillovers from foreign firms, whilst Chinese-owned firms in industries such as production of electrical machinery or manufacture of scientific equipment do not see their productivity increase by an expansion of the activities of foreign firms operating in the same industry and province. Our results are robust to the use of different measures of



credit constraints, various clustering arrangements of standard errors and controlling for other confounding factors at the sectoral level that might influence the relationship between spillovers from the activity of foreign firms and external finance dependence.

Our results demonstrate that positive productivity spillovers occurring as a by-product of the operation of foreign firms do not accrue automatically to local firms. The latter require access to external finance in order to take advantage of technological innovations, better management practices or to attract skilled employees made available by foreign-owned firms. To the best of our knowledge, ours is the first paper that provides empirical support for the claim that local producers' access to external sources of finance plays an important role in determining the magnitude of productivity spillovers that they can obtain from foreign-owned firms. This relationship is particularly important for China, as several authors have established that the efficiency of its financial system has lagged behind other developments in its economy. Thus, improving the access of non-state owned firms to formal sources of finance could result in important productivity gains as China is likely to remain one of the most popular recipients of foreign investment in the world.

## References

- ABRAHAM, F., J. KONINGS, AND V. SLOOTMAEKERS (2010): “FDI spillovers in the Chinese manufacturing sector,” *The Economics of Transition*, 18, 143–182.
- AGHION, P. AND P. HOWITT (1992): “A model of growth through creative destruction,” *Econometrica*, 60, 323–351.
- AITKEN, B. J. AND A. E. HARRISON (1999): “Do domestic firms benefit from direct foreign investment? evidence from Venezuela,” *American Economic Review*, 89, 605–618.
- ALESSANDRIA, G., J. P. KABOSKI, AND V. MIDRIGAN (2010): “Inventories, lumpy trade, and large devaluations,” *American Economic Review*, 100, 2304–2339.
- ALFARO, L., A. CHANDA, S. KALEMLI-OZCAN, AND S. SAYEK (2004): “FDI and economic growth: the role of local financial markets,” *Journal of International Economics*, 64, 89–112.
- ALLEN, F., J. QIAN, AND M. QIAN (2005): “Law, finance, and economic growth in China,” *Journal of Financial Economics*, 77, 57–116.
- ANTRÀS, P. AND S. R. YEAPLE (2013): “Multinational firms and the structure of international trade,” NBER Working Papers 18775, National Bureau of Economic Research.
- ARROW, K. J. (1969): “Classificatory notes on the production and transmission of technological knowledge,” *American Economic Review*, 59, 29–35.
- ATERIDO, R., M. HALLWARD-DRIEMEIER, AND C. PAGÉS (2011): “Big constraints to small firms growth? business environment and employment growth across firms,” *Economic Development and Cultural Change*, 59, 609–647.
- AYYAGARI, M., A. DEMIRGÜÇ-KUNT, AND V. MAKSIMOVIC (2010): “Formal versus informal finance: evidence from China,” *Review of Financial Studies*, 23, 3048–3097.
- (2011): “Firm innovation in emerging markets: the role of finance, governance, and competition,” *Journal of Financial and Quantitative Analysis*, 46, 1545–1580.
- BAJONA, C. AND T. CHU (2010): “Reforming state owned enterprises in China: effects of WTO accession,” *Review of Economic Dynamics*, 13, 800–823.
- BECK, T., A. DEMIRGÜÇ-KUNT, L. LAEVEN, AND R. LEVINE (2008): “Finance, firm size, and growth,” *Journal of Money, Credit and Banking*, 40, 1379–1405.
- BLOMSTROM, M. AND A. KOKKO (1998): “Multinational corporations and spillovers,” *Journal of Economic Surveys*, 12, 247–277.
- BLOOM, N. AND J. VAN REENEN (2007): “Measuring and explaining management practices across firms and countries,” *The Quarterly Journal of Economics*, 122, 1351–1408.
- BOND, S. AND J. VAN REENEN (2007): “Microeconomic models of investment and employment,” in *Handbook of Econometrics*, ed. by J. Heckman and E. Leamer, Elsevier, vol. 6 of *Handbook of Econometrics*, chap. 65.
- BRANDT, L. AND H. LI (2003): “Bank discrimination in transition economies: ideology, information, or incentives?” *Journal of Comparative Economics*, 31, 387–413.

- BRAUN, M. (2003): “Financial contractibility and asset hardness,” Manuscript, University of California, Los Angeles.
- BRAUN, M. AND B. LARRAIN (2005): “Finance and the business cycle: international, inter-industry evidence,” *Journal of Finance*, 60, 1097–1128.
- BUCKLEY, P. J., J. CLEGG, AND C. WANG (2002): “The impact of inward FDI on the performance of Chinese manufacturing firms,” *Journal of International Business Studies*, 33, 637–655.
- CAMPELLO, M., J. R. GRAHAM, AND C. R. HARVEY (2010): “The real effects of financial constraints: evidence from a financial crisis,” *Journal of Financial Economics*, 97, 470–487.
- CHEN, M. AND A. GUARIGLIA (2011): “Financial constraints and firm productivity in China: do liquidity and export behavior make a difference?” Discussion Papers 11/09, University of Nottingham, GEP.
- COHEN, WESLEY, M. AND D. A. LEVINTHAL (1990): “Absorptive capacity: a new perspective on learning and innovation,” *Administrative Science Quarterly*, 35, 128–152.
- CULL, R. AND L. C. XU (2003): “Who gets credit? the behavior of bureaucrats and state banks in allocating credit to Chinese state-owned enterprises,” *Journal of Development Economics*, 71, 533–559.
- DAS, S. (1987): “Externalities, and technology transfer through multinational corporations: a theoretical analysis,” *Journal of International Economics*, 22, 171–182.
- DASGUPTA, P. AND J. STIGLITZ (1980): “Industrial structure and the nature of innovative activity,” *Economic Journal*, 90, 266–293.
- DAVIDSON, R. AND J. G. MACKINNON (1981): “Several tests for model specification in the presence of alternative hypotheses,” *Econometrica*, 49, 781–793.
- DEFEVER, F. AND A. RIAÑO (2012): “China’s pure exporter subsidies,” CEP Discussion Papers 1182.
- DOLLAR, D. AND S.-J. WEI (2007): “Das (Wasted) Kapital: firm ownership and investment efficiency in China,” NBER Working Papers 13103, National Bureau of Economic Research.
- DU, J. AND S. GIRMA (2007): “Finance and firm export in China,” *Kyklos*, 60, 37–54.
- EATON, J. AND S. KORTUM (1999): “International technology diffusion: theory and measurement,” *International Economic Review*, 40, 537–570.
- FEENSTRA, R. C., Z. LI, AND M. YU (2011): “Exports and credit constraints under incomplete information: theory and evidence from China,” NBER Working Papers 16940.
- FINDLAY, R. (1978): “Relative backwardness, direct foreign investment, and the transfer of technology: a simple dynamic model,” *The Quarterly Journal of Economics*, 92, 1–16.
- FOSFURI, A., M. MOTTA, AND T. RONDE (2001): “Foreign direct investment and spillovers through workers’ mobility,” *Journal of International Economics*, 53, 205–222.
- GIRMA, S. (2005): “Absorptive capacity and productivity spillovers from FDI: a threshold regression analysis,” *Oxford Bulletin of Economics and Statistics*, 67, 281–306.

- GIRMA, S. AND Y. GONG (2008): “FDI, linkages and the efficiency of state-owned enterprises in China,” *Journal of Development Studies*, 44, 728–749.
- GÖRG, H. AND D. GREENAWAY (2004): “Much ado about nothing? do domestic firms really benefit from foreign direct investment?” *World Bank Research Observer*, 19, 171–197.
- GROSSMAN, G. AND E. HELPMAN (1991): *Innovation and growth in the global economy*, Cambridge, MA: MIT Press.
- HALE, G. AND C. LONG (2011): “Are there productivity spillovers from foreign direct investment in China?” *Pacific Economic Review*, 16, 135–153.
- HANSEN, B. E. (1999): “Threshold effects in non-dynamic panels: estimation, testing, and inference,” *Journal of Econometrics*, 93, 345–368.
- HASKEL, J. E., S. C. PEREIRA, AND M. J. SLAUGHTER (2007): “Does inward foreign direct investment boost the productivity of domestic firms?” *The Review of Economics and Statistics*, 89, 482–496.
- HOLMES, T. J., E. R. MCGRATTAN, AND E. C. PRESCOTT (2013): “Quid pro quo: technology capital transfers for market access in China,” NBER Working Papers 19249, National Bureau of Economic Research.
- JAVORCIK, B. S. (2004): “Does foreign direct investment increase the productivity of domestic firms? in search of spillovers through backward linkages,” *American Economic Review*, 94, 605–627.
- JAVORCIK, B. S. AND M. SPATAREANU (2009): “Liquidity constraints and firms’ linkages with multinationals,” *World Bank Economic Review*, 23, 323–346.
- JONES, C. I. (2005): “Growth and ideas,” in *Handbook of Economic Growth*, ed. by P. Aghion and S. Durlauf, Elsevier, vol. 1 of *Handbook of Economic Growth*, chap. 16, 1063–1111.
- JORDAAN, J. A. (2005): “Determinants of FDI-induced externalities: New empirical evidence for Mexican manufacturing industries,” *World Development*, 33, 2103–2118.
- KELLER, W. (1996): “Absorptive capacity: on the creation and acquisition of technology in development,” *Journal of Development Economics*, 49, 199–227.
- (2004): “International technology diffusion,” *Journal of Economic Literature*, 42, 752–782.
- KROSZNER, R. S., L. LAEVEN, AND D. KLINGEBIEL (2007): “Banking crises, financial dependence, and growth,” *Journal of Financial Economics*, 84, 187–228.
- LEVINE, R. (2005): “Finance and growth: theory and evidence,” in *Handbook of Economic Growth*, ed. by P. Aghion and S. Durlauf, Elsevier, vol. 1 of *Handbook of Economic Growth*, chap. 12, 865–934.
- LEVINSOHN, J. AND A. PETRIN (2003): “Estimating production functions using inputs to control for unobservables,” *Review of Economic Studies*, 70, 317–341.
- LIU, Z. (2008): “Foreign direct investment and technology spillovers: theory and evidence,” *Journal of Development Economics*, 85, 176–193.

- MANOVA, K. (2013): “Credit constraints, heterogeneous firms, and international trade,” *Review of Economic Studies*, 80, 711–744.
- MANSFIELD, E. AND A. ROMEO (1980): “Technology transfer to overseas subsidiaries by U.S. based firms,” *Quarterly Journal of Economics*, 95, 737–750.
- NAUGHTON, B. (1996): “China’s emergence and prospects as a trading nation,” *Brookings Papers on Economic Activity*, 27, 273–344.
- NAVARETTI, G. B. AND A. J. VENABLES (2006): *Multinational firms in the world economy*, Princeton, NJ: Princeton University Press.
- POLANYI, M. (1958): *Personal knowledge: towards a post-critical philosophy*, Chicago, IL: University of Chicago Press.
- PRASAD, E. AND S.-J. WEI (2007): “The Chinese approach to capital inflows: patterns and possible explanations,” in *Capital Controls and Capital Flows in Emerging Economies: Policies, Practices and Consequences*, National Bureau of Economic Research, 421–480.
- QIAN, Y. AND C. XU (1998): “Innovation and bureaucracy under soft and hard budget constraints,” *Review of Economic Studies*, 65, 151–164.
- RAJAN, R. G. AND L. ZINGALES (1998): “Financial dependence and growth,” *American Economic Review*, 88, 559–586.
- SPENCE, M. (1984): “Cost reduction, competition, and industry performance,” *Econometrica*, 52, 101–121.
- STREBULAEV, I. A. AND T. M. WHITED (2012): “Dynamic models and structural estimation in corporate finance,” Manuscript, University of Rochester.
- SUN, Q., W. H. S. TONG, AND J. TONG (2002): “How does government ownership affect firm performance? evidence from China’s privatization experience,” *Journal of Business Finance & Accounting*, 29, 1–27.
- VILLEGAS-SANCHEZ, C. (2009): “FDI spillovers and the role of local financial markets: evidence from Mexico,” Manuscript, University of Houston.
- VIVES, X. (2008): “Innovation and competitive pressure,” *Journal of Industrial Economics*, 56, 419–469.
- WANG, J.-Y. AND M. BLOMSTROM (1992): “Foreign investment and technology transfer : A simple model,” *European Economic Review*, 36, 137–155.
- WEI, Y. AND X. LIU (2006): “Productivity spillovers from R&D, exports and FDI in China’s manufacturing sector,” *Journal of International Business Studies*, 37, 544–557.
- XU, C. (2011): “The fundamental institutions of China’s reforms and development,” *Journal of Economic Literature*, 49, 1076–1151.

## A Appendix

Table A.1: Correlation matrix for industry-level characteristics

	EFD	EFD <sup>1970</sup>	EFD <sup>1980</sup> <sub>CAN</sub>	Tangibility index	Capital in-tensity dex	Liquidity index	Durability index	Investment price Index	Tradability index
EFD	1								
EFD <sup>1970</sup>	0.63	1							
EFD <sup>1980</sup> <sub>CAN</sub>	0.59	0.49	1						
Tangibility index	0.01	0.20	-0.24	1					
Capital intensity index	-0.09	-0.03	-0.22	0.67	1				
Liquidity index	-0.17	-0.05	-0.05	-0.64	-0.49	1			
Durability index	0.24	0.47	0.42	-0.15	-0.22	0.19	1		
Investment price index	0.38	0.68	0.36	-0.19	-0.22	0.16	0.65	1	
Tradability index	0.14	0.07	-0.18	0.09	-0.10	0.10	0.31	0.03	1



Table A.2: Adding time-varying firm characteristics

	Value-added of domestic firms			
	(1)	(2)	(3)	(4)
Capital	0.199 <sup>a</sup> (0.011)	0.198 <sup>a</sup> (0.011)	0.200 <sup>a</sup> (0.011)	0.198 <sup>a</sup> (0.011)
Labour	0.559 <sup>a</sup> (0.018)	0.552 <sup>a</sup> (0.018)	0.559 <sup>a</sup> (0.018)	0.551 <sup>a</sup> (0.018)
Foreign	0.024 <sup>a</sup> (0.008)	0.024 <sup>a</sup> (0.008)	0.024 <sup>a</sup> (0.008)	0.024 <sup>a</sup> (0.008)
Export dummy		0.100 <sup>a</sup> (0.016)		0.100 <sup>a</sup> (0.016)
Age			0.046 (0.039)	0.046 (0.039)
Constant	0.512 <sup>a</sup> (0.131)	0.524 <sup>a</sup> (0.130)	0.508 <sup>a</sup> (0.131)	0.520 <sup>a</sup> (0.131)
No. of observations	40,537	40,537	40,513	40,513
No. of firms	11,521	11,521	11,519	11,519
R-Squared	0.231	0.232	0.230	0.232

Robust standard errors clustered at the firm level in parenthesis. <sup>a</sup>, <sup>b</sup>, <sup>c</sup> significantly different from 0 at 1, 5 and 10 percent level respectively. All regressions include firm and year fixed effects. Capital is measured as the real value of tangible fixed assets. Labour is measured as the number of employees. Foreign is measured as the total value-added by foreign-owned firms within an industry-province pair in a given year.

Table A.3: Clustering of standard errors at different levels of aggregation

Standard errors clustered at:	Value-added of domestic firms		
	One-way		Two-way
	Firm (1)	Industry-province (2)	Industry <i>and</i> province (3)
Capital	0.199 <sup>a</sup> (0.011)	0.199 <sup>a</sup> (0.011)	0.188 <sup>a</sup> (0.015)
Labour	0.559 <sup>a</sup> (0.018)	0.559 <sup>a</sup> (0.018)	0.568 <sup>a</sup> (0.042)
Foreign	0.024 <sup>a</sup> (0.008)	0.024 <sup>c</sup> (0.013)	0.023 (0.020)
Constant	0.512 <sup>a</sup> (0.131)	0.512 <sup>a</sup> (0.175)	-0.000 (0.000)
No. of observations	40,537	40,537	32,801
No. of clusters	11,521	466	-
R-Squared	0.231	0.231	0.24

<sup>a</sup>, <sup>b</sup>, <sup>c</sup> significantly different from 0 at 1, 5 and 10 percent level respectively. All regressions include firm and year fixed effects. Two-way clustering at the industry and province level results (column 3) are estimated using the `cgmreg` command in Stata. Capital is measured as the real value of tangible fixed assets. Labour is measured as the number of employees. FDI is measured as the total value-added by foreign-owned firms within an industry-province pair in a given year.

Table A.4: Two-digit sector-specific production function parameters

	Value-added of domestic firms	
	(1)	(2)
Capital	0.199 <sup>a</sup> (0.011)	0.504 (0.326)
Labour	0.559 <sup>a</sup> (0.018)	0.516 <sup>c</sup> (0.277)
Foreign	0.024 <sup>a</sup> (0.008)	0.022 <sup>a</sup> (0.008)
Constant	0.512 <sup>a</sup> (0.131)	0.510 <sup>a</sup> (0.130)
No. of observations	40,537	40,537
No. of firms	11,521	11,521
R-Squared	0.231	0.235

Robust standard errors clustered at the firm level in parenthesis. <sup>a</sup>, <sup>b</sup>, <sup>c</sup> significantly different from 0 at 1, 5 and 10 percent level respectively. All regressions include 2-digit industry  $\times$  capital, and 2-digit industry  $\times$  labour interactions as well as firm and year fixed effects. Capital is measured as the real value of tangible fixed assets. Labour is measured as the number of employees. Foreign is measured as the total value-added by foreign-owned firms within an industry-province cell in a given year.

Table A.5: Using Total Factor Productivity (TFP) as dependent variable

	Domestic firms	
	Value-added (1)	TFP (2)
Capital	0.199 <sup>a</sup> (0.011)	
Labour	0.559 <sup>a</sup> (0.024)	
Foreign	0.024 <sup>a</sup> (0.008)	0.026 <sup>a</sup> (0.008)
Constant	0.512 <sup>a</sup> (0.131)	2.719 <sup>a</sup> (0.075)
No. of observations	40,537	40,537
No. of firms	11,521	11,521
R-Squared	0.231	0.042

Robust standard errors clustered at the firm level in parenthesis. <sup>a</sup>, <sup>b</sup>, <sup>c</sup> significantly different from 0 at 1, 5 and 10 percent level respectively. All regressions include firm and year fixed effects. Capital is measured as the real value of tangible fixed assets. Labour is measured as the number of employees. Foreign is measured as the total value-added by foreign-owned firms within an industry-province pair in a given year. Total Factor Productivity (TFP) is calculated using the [Levinsohn and Petrin \(2003\)](#) algorithm.

Table A.6: Test of continuous interaction model against exogenous sample splitting model

	Value-added of domestic firms	
	(1)	(2)
Capital	0.017 (0.068)	0.162 <sup>b</sup> (0.074)
Labour	0.050 (0.194)	0.471 <sup>b</sup> (0.214)
Foreign <sup>other</sup>	0.005 (0.018)	0.042 <sup>b</sup> (0.018)
Foreign <sup>other</sup> × EFD	-0.015 (0.037)	
Linear prediction exogenous sample splitting	0.910 <sup>a</sup> (0.347)	
Foreign <sup>other</sup> × EFD dummy		-0.061 <sup>a</sup> (0.023)
Linear prediction continuous interaction term		0.154 (0.383)
Constant	0.068 (0.284)	0.646 <sup>b</sup> (0.321)
No. of observations	30,219	30,219
No. of firms	9,435	9,435
R-Squared	0.256	0.256

Robust standard errors clustered at the firm level in parenthesis. <sup>a</sup>, <sup>b</sup>, <sup>c</sup> significantly different from 0 at 1, 5 and 10 percent level respectively. Capital is measured as the real value of tangible fixed assets. Labour is measured as the number of employees. Foreign<sup>other</sup> is measured as the total value-added from foreign firms not originating in Hong Kong, Macau or Taiwan in an industry-province cell. EFD is the external financial dependence index constructed as the share of capital expenditures not financed with cash flow from operation for the median publicly-listed firm in each 3-digit industry in the United States averaged over the 1980s. EFD dummy takes the value 1 if an industry has external finance dependence above the median for the EFD continuous index (0.21) and 0 otherwise.

Table A.7: Is external finance dependence picking up other industry characteristics? Using continuous interaction terms

	Value-added of non state-owned domestic firms						
	(1)	(2)	(3)	(4)	(5)	(6)	(7)
Foreign <sup>other</sup>	0.043 <sup>a</sup> (0.012)	-0.048 <sup>b</sup> (0.023)	-0.013 (0.018)	0.111 <sup>a</sup> (0.037)	0.019 (0.013)	0.043 <sup>a</sup> (0.012)	-0.019 (0.024)
Foreign <sup>other</sup> × EFD	-0.097 <sup>a</sup> (0.025)	-0.071 <sup>a</sup> (0.025)	-0.071 <sup>a</sup> (0.025)	-0.090 <sup>a</sup> (0.026)	-0.104 <sup>a</sup> (0.026)	-0.097 <sup>a</sup> (0.029)	-0.082 <sup>a</sup> (0.025)
Foreign <sup>other</sup> × tangibility index	0.256 <sup>a</sup> (0.062)						
Foreign <sup>other</sup> × capital intensity index	0.001 <sup>a</sup> (0.000)						
Foreign <sup>other</sup> × liquidity index				-0.435 <sup>c</sup> (0.228)			
Foreign <sup>other</sup> × durability index					0.044 <sup>a</sup> (0.016)		
Foreign <sup>other</sup> × investment goods producer index						-0.0001 (0.029)	
Foreign <sup>other</sup> × tradability index							0.095 <sup>a</sup> (0.035)
Constant	0.723 <sup>a</sup> (0.141)	0.778 <sup>a</sup> (0.140)	0.787 <sup>a</sup> (0.141)	0.741 <sup>a</sup> (0.141)	0.763 <sup>a</sup> (0.141)	0.723 <sup>a</sup> (0.141)	0.765 <sup>a</sup> (0.140)
No. of observations	30,219	30,219	30,219	30,219	30,219	30,219	30,219
No. of firms	9,435	9,435	9,435	9,435	9,435	9,435	9,435
R-Squared	0.256	0.256	0.256	0.256	0.256	0.256	0.256
F-test of equality of interaction terms		25.72 <sup>a</sup>	8.47 <sup>a</sup>	2.19	19.98 <sup>a</sup>	3.74 <sup>c</sup>	19.52 <sup>a</sup>

Robust standard errors clustered at the firm level in parenthesis. <sup>a</sup>, <sup>b</sup>, <sup>c</sup> significantly different from 0 at 1, 5 and 10 percent level respectively. All regressions include firm and year fixed effects. The coefficients on capital and labour are not reported to save space. Tangibility is an indicator calculated as the median ratio of net property, plant and equipment to the book value of assets of all US based companies in a given industry, calculated from Compustat's annual industrial files for 1986-1995 (Braun, 2003). Capital intensity is an indicator defined as the median level of the ratio of fixed assets over number of employees of US firms in Compustat for the period 1980-1999 (Kroszner et al., 2007). Liquidity is an index calculated as the median level of liquidity needs for all active US based companies in the industry calculated from Compustat's annual industrial files for 1980-1999 (Kroszner et al., 2007). Durability is an index of whether firms in an industry produce predominantly durable goods, using the classification of US industries provided by the US Bureau of Economic Analysis (Kroszner et al., 2007). Investment goods producer is an indicator which measures how tilted towards investment goods relative to consumption goods an industry is (Braun and Larrain, 2005). Tradability is constructed as the ratio trade/(trade+domestic use), where trade is defined as exports plus imports, and domestic use is defined as consumption plus investment, either private or public (Braun and Larrain, 2005). Foreign<sup>other</sup> is measured as the total value-added from foreign firms not originating in Hong Kong, Macau or Taiwan in a given industry-province cell.

Table A.8: Adding time-varying firm characteristics – interaction regression

	(1)	(2)	(3)	(4)	(5)	(6)	(7)	(8)
Capital	0.191 <sup>a</sup> (0.012)	0.190 <sup>a</sup> (0.012)	0.191 <sup>a</sup> (0.012)	0.190 <sup>a</sup> (0.012)	0.191 <sup>a</sup> (0.012)	0.190 <sup>a</sup> (0.012)	0.191 <sup>a</sup> (0.012)	0.190 <sup>a</sup> (0.012)
Labour	0.556 <sup>a</sup> (0.019)	0.552 <sup>a</sup> (0.019)	0.556 <sup>a</sup> (0.019)	0.552 <sup>a</sup> (0.019)	0.556 <sup>a</sup> (0.019)	0.552 <sup>a</sup> (0.019)	0.556 <sup>a</sup> (0.019)	0.552 <sup>a</sup> (0.019)
Foreign <sup>other</sup>	0.043 <sup>a</sup> (0.012)	0.044 <sup>a</sup> (0.012)	0.044 <sup>a</sup> (0.012)	0.044 <sup>a</sup> (0.012)	0.047 <sup>a</sup> (0.012)	0.048 <sup>a</sup> (0.012)	0.048 <sup>a</sup> (0.012)	0.048 <sup>a</sup> (0.012)
Foreign <sup>other</sup> × EFD	-0.097 <sup>a</sup> (0.025)	-0.099 <sup>a</sup> (0.025)	-0.098 <sup>a</sup> (0.025)	-0.100 <sup>a</sup> (0.025)				
Foreign <sup>other</sup> × EFD dummy					-0.067 <sup>a</sup> (0.016)	-0.068 <sup>a</sup> (0.016)	-0.068 <sup>a</sup> (0.016)	-0.069 <sup>a</sup> (0.016)
Export dummy		0.067 <sup>a</sup> (0.018)		0.067 <sup>a</sup> (0.018)	0.068 <sup>a</sup> (0.018)		0.068 <sup>a</sup> (0.018)	
Age			-0.002 (0.068)	-0.005 (0.068)		-0.000 (0.069)	-0.003 (0.069)	
Constant	0.723 <sup>a</sup> (0.141)	0.725 <sup>a</sup> (0.140)	0.720 <sup>a</sup> (0.141)	0.722 <sup>a</sup> (0.140)	0.756 <sup>a</sup> (0.141)	0.759 <sup>a</sup> (0.141)	0.754 <sup>a</sup> (0.141)	0.756 <sup>a</sup> (0.141)
Number of observations	30,219	30,219	30,201	30,201	30,219	30,219	30,201	30,201
Number of firms	9,435	9,435	9,434	9,434	9,435	9,435	9,434	9,434
R-Squared	0.26	0.26	0.26	0.26	0.256	0.257	0.256	0.257

Robust standard errors clustered at the firm level in parenthesis. <sup>a</sup>, <sup>b</sup>, <sup>c</sup> significantly different from 0 at 1, 5 and 10 percent level respectively. Capital is measured as the real value of tangible fixed assets. Labour is measured as the number of employees. Foreign<sup>other</sup> is measured as the total value-added from foreign firms originating elsewhere in an industry-province cell. EFD is the external financial dependence index constructed as the share of capital expenditures not financed with cash flows from operation for the median publicly-listed firm in each 3-digit industry in the United States averaged over the 1980s. EFD dummy takes the value 1 if an industry has external finance dependence above the index median (0.21) and 0 otherwise.

Table A.9: Clustering of standard errors at different levels of aggregation – interaction regression

Standard errors clustered at:	Value-added of non state-owned domestic firms					
	One-way				Two-way	
	Firm		Industry-province		Industry-province	
	(1)	(2)	(3)	(4)	(5)	(6)
Capital	0.191 <sup>a</sup> (0.012)	0.191 <sup>a</sup> (0.012)	0.191 <sup>a</sup> (0.012)	0.191 <sup>a</sup> (0.012)	0.191 <sup>a</sup> (0.015)	0.191 <sup>a</sup> (0.015)
Labour	0.556 <sup>a</sup> (0.019)	0.556 <sup>a</sup> (0.019)	0.556 <sup>a</sup> (0.024)	0.556 <sup>a</sup> (0.024)	0.556 <sup>a</sup> (0.046)	0.556 <sup>a</sup> (0.046)
Foreign <sup>other</sup>	0.043 <sup>a</sup> (0.012)	0.047 <sup>a</sup> (0.012)	0.043 <sup>b</sup> (0.021)	0.047 <sup>b</sup> (0.021)	0.043 <sup>a</sup> (0.015)	0.047 <sup>a</sup> (0.017)
Foreign <sup>other</sup> × EFD	-0.097 <sup>a</sup> (0.025)		-0.097 <sup>a</sup> (0.037)		-0.097 <sup>a</sup> (0.035)	
Foreign <sup>other</sup> × EFD dummy		-0.067 <sup>a</sup> (0.016)		-0.067 <sup>a</sup> (0.024)		-0.067 <sup>a</sup> (0.026)
Constant	0.723 <sup>a</sup> (0.141)	0.756 <sup>a</sup> (0.141)	0.723 <sup>a</sup> (0.192)	0.756 <sup>a</sup> (0.193)	0.000 (0.000)	0.000 (0.000)
Number of observations	30,219	30,219	30,219	30,219	30,219	30,219
Number of clusters	9,435	9,435	419	419		
R-Squared	0.256	0.256	0.256	0.256	0.256	0.256

<sup>a</sup>, <sup>b</sup>, <sup>c</sup> significantly different from 0 at 1, 5 and 10 percent level respectively. All regressions include firm and year fixed effects. Two-way clustering at the industry and province level results (columns 5 and 6) are estimated using the `cgmreg` command in Stata. Capital is measured as the real value of tangible fixed assets. Labour is measured as the number of employees. Foreign<sup>other</sup> is measured as the total value-added from foreign firms originating elsewhere in an industry-province cell. EFD is the external financial dependence index constructed as the share of capital expenditures not financed with cash flows from operation for the median publicly-listed firm in each 3-digit industry in the United States averaged over the 1980s. EFD dummy takes the value 1 if an industry has external finance dependence above the index median (0.21) and 0 otherwise.

Table A.10: Two-digit sector-specific production function parameters – interaction regression

	Value-added of non state-owned domestic firms	
	(1)	(2)
Capital	-0.073 (0.101)	-0.085 (0.105)
Labour	0.421 <sup>a</sup> (0.105)	0.425 <sup>a</sup> (0.101)
Foreign <sup>other</sup>	0.042 <sup>a</sup> (0.012)	0.045 <sup>a</sup> (0.012)
Foreign <sup>other</sup> × EFD	-0.100 <sup>a</sup> (0.026)	
FDI <sup>other</sup> × EFD dummy		-0.066 <sup>a</sup> (0.016)
Constant	0.716 <sup>a</sup> (0.138)	0.749 <sup>a</sup> (0.139)
Number of observations	30,219	30,219
Number of firms	9,435	9,435
R-Squared	0.261	0.262

Robust standard errors clustered at the firm level in parenthesis. <sup>a</sup>, <sup>b</sup>, <sup>c</sup> significantly different from 0 at 1, 5 and 10 percent level respectively. All regressions include 2-digit industry×capital, and 2-digit industry×labour interactions as well as firm and year fixed effects. Capital is measured as the real value of tangible fixed assets. Labour is measured as the number of employees. Foreign<sup>other</sup> is measured as the total value-added from foreign firms originating elsewhere in an industry-province cell. EFD is the external financial dependence index constructed as the share of capital expenditures not financed with cash flows from operation for the median publicly-listed firm in each 3-digit industry in the United States averaged over the 1980s. EFD dummy takes the value 1 if an industry has external finance dependence above the index median (0.21) and 0 otherwise.

Table A.11: Using Total Factor Productivity (TFP) as dependent variable

	Non state-owned domestic firms			
	Value-added		TFP	
	(1)	(2)	(3)	(4)
Capital	0.191 <sup>a</sup> (0.012)	0.191 <sup>a</sup> (0.012)		
Labour	0.556 <sup>a</sup> (0.019)	0.556 <sup>a</sup> (0.019)		
Foreign <sup>other</sup>	0.043 <sup>a</sup> (0.012)	0.047 <sup>a</sup> (0.012)	0.046 <sup>a</sup> (0.012)	0.049 <sup>a</sup> (0.012)
Foreign <sup>other</sup> × EFD	-0.097 <sup>a</sup> (0.025)		-0.099 <sup>a</sup> (0.027)	
Foreign <sup>other</sup> × EFD dummy		-0.067 <sup>a</sup> (0.016)		-0.067 <sup>a</sup> (0.016)
Constant	0.723 <sup>a</sup> (0.141)	0.756 <sup>a</sup> (0.141)	2.834 <sup>a</sup> (0.078)	2.867 <sup>a</sup> (0.080)
Number of observations	30,219	30,219	30,219	30,219
Number of firms	9,435	9,435	9,435	9,435
R-Squared	0.256	0.256	0.054	0.055

Robust standard errors clustered at the firm level in parenthesis. <sup>a</sup>, <sup>b</sup>, <sup>c</sup> significantly different from 0 at 1, 5 and 10 percent level respectively. All regressions include firm and year fixed effects. Capital is measured as the real value of tangible fixed assets. Labour is measured as the number of employees. Foreign<sup>other</sup> is measured as the total value-added from foreign firms originating elsewhere in an industry-province cell. EFD is the external financial dependence index constructed as the share of capital expenditures not financed with cash flows from operation for the median publicly-listed firm in each 3-digit industry in the United States averaged over the 1980s. EFD dummy takes the value 1 if an industry has external finance dependence above the index median (0.21) and 0 otherwise. Total Factor Productivity (TFP) is calculated using the [Levinsohn and Petrin \(2003\)](#) algorithm.