

Figures

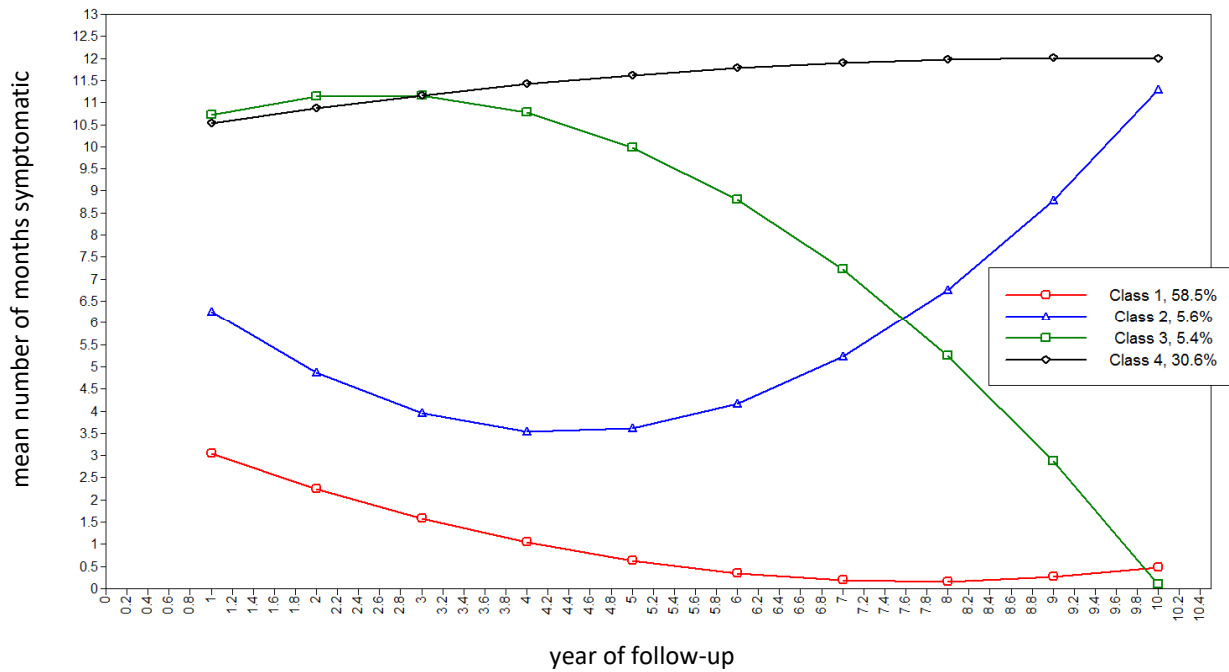


Figure 1. Estimated latent trajectories of 4-class quadratic GMM (Model 2.2.4, see Table 2) for number of months psychotic per year (n=326)

Note:

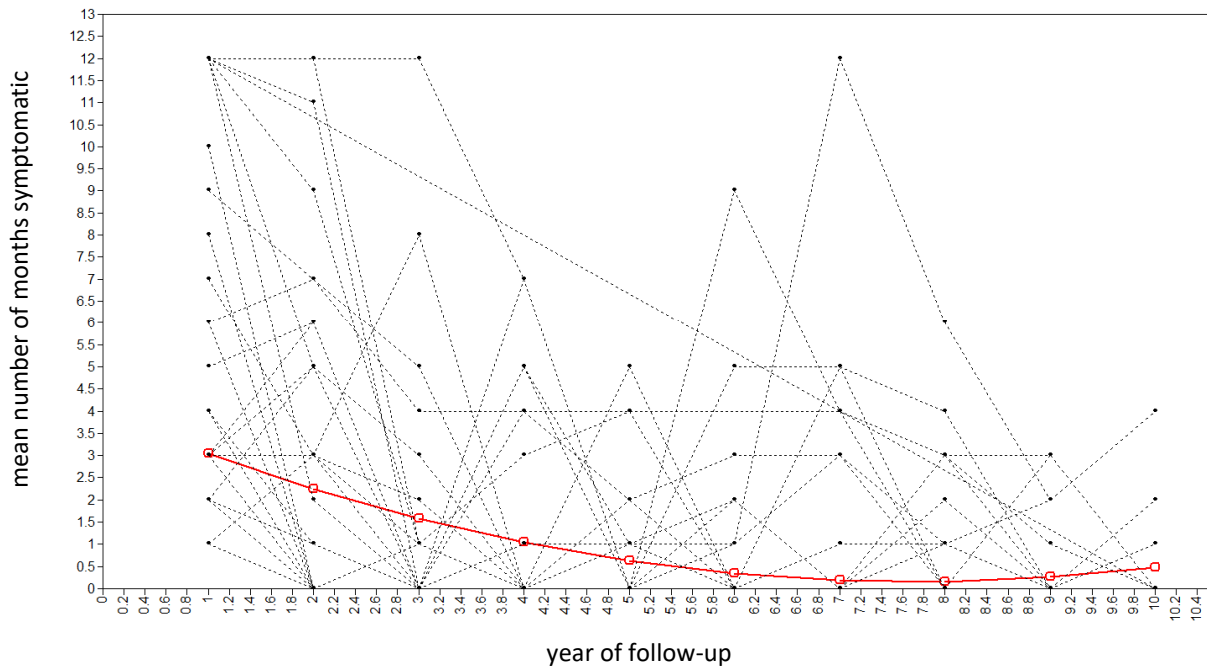
Class 1: Remitting: course characterised by remitting periods of symptoms, which became shorter and less frequent over time

Class 2: Late decline: course characterised, initially, by remitting periods of symptoms, with more persistent symptoms over time

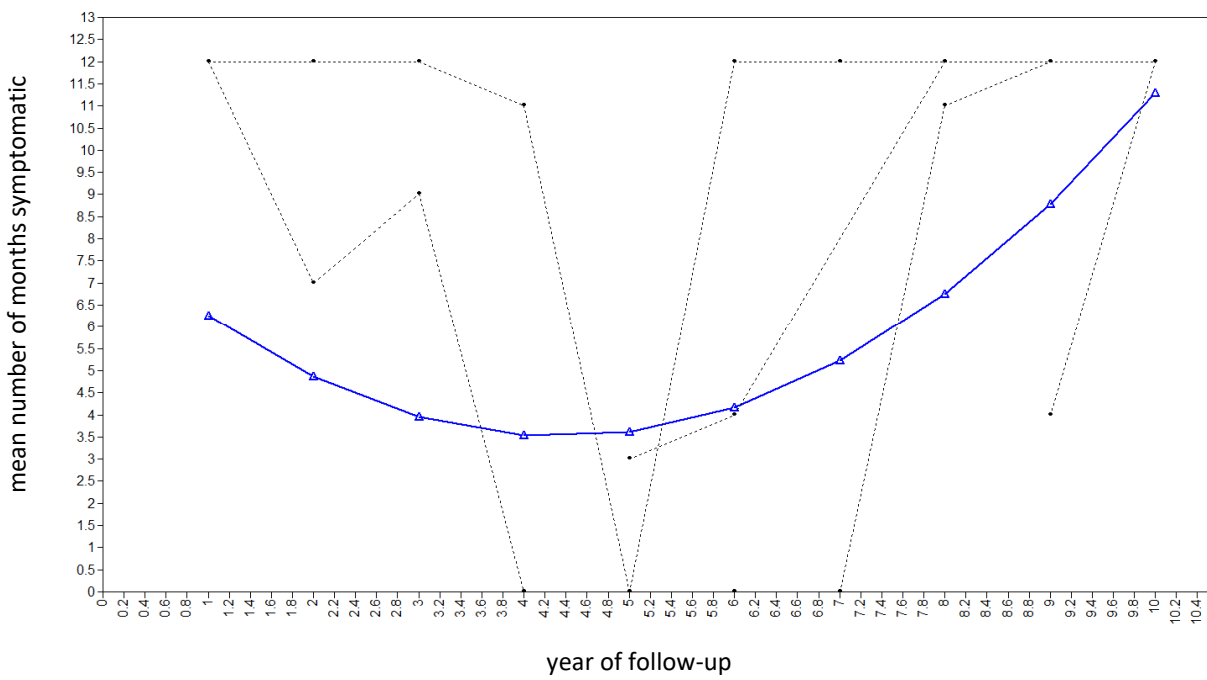
Class 3: Late improvement: course characterised, initially, by persistent symptoms, with remitting periods of symptoms later

Class 4: Persistent: a course characterised by persistent or long periods of symptoms throughout.

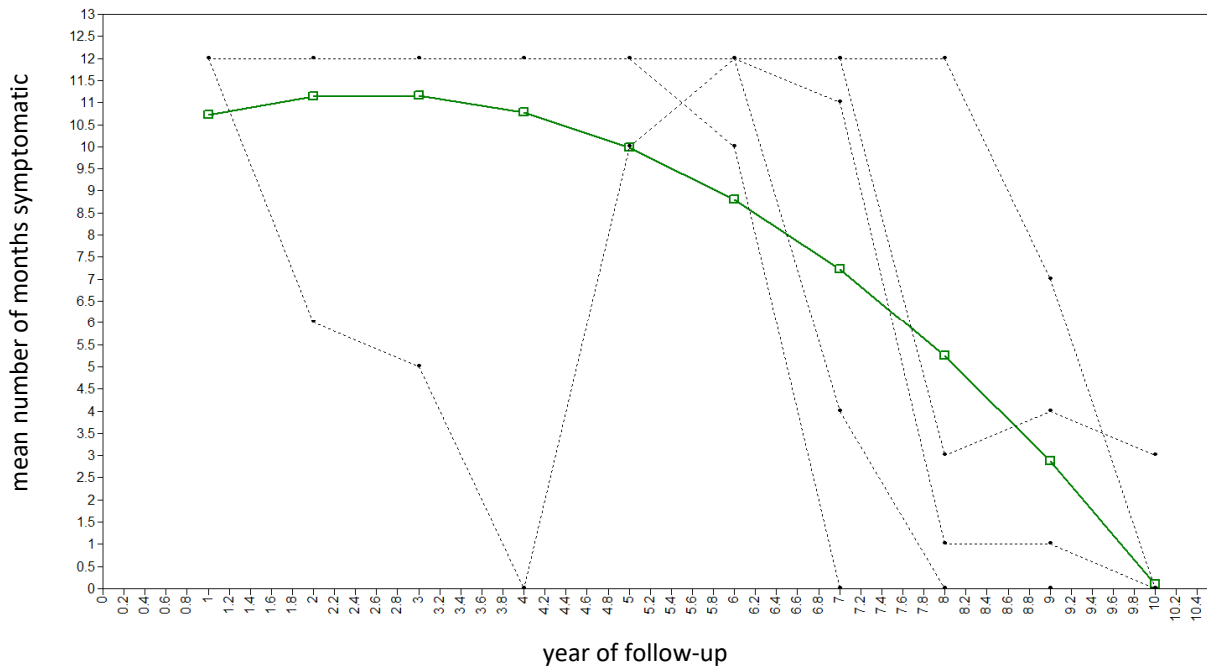
Trajectory 1: Remitting



Trajectory 2: Late Decline



Trajectory 3: Late Improvement



Trajectory 4: Persistent

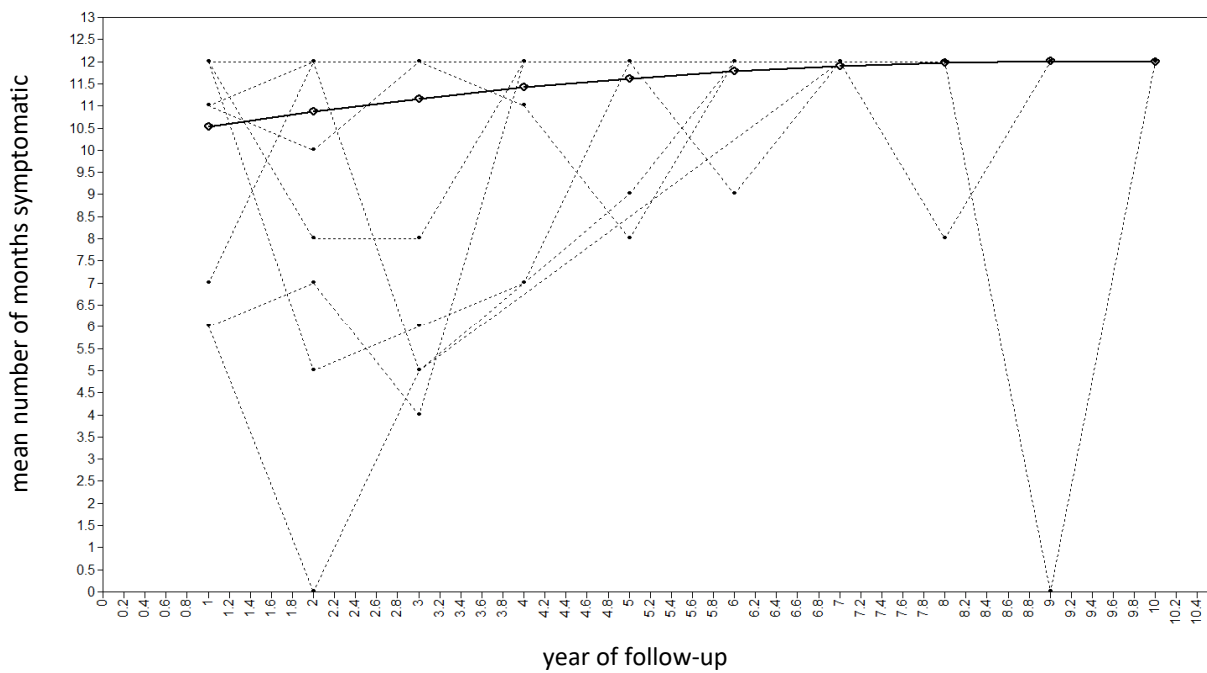


Figure 2. Estimated means and observed values of 4-class quadratic GMM in randomly selected 100 subjects (Model 2.2.4, see Table 2) for number of months psychotic per year ($n=326$)