

3D Segmentation of the Whole Heart Vasculature Using Improved Multi-threshold Otsu and White Top-Hat Scale Space Hessian Based Vessel Filter

Faiza Bukenya¹, Josef Ehling², Abdu Kiweewa Kalema³, Imo Eyoh¹, John Robert¹, Li Bai¹,

¹School of Computer Science, University of Nottingham, United Kingdom,

²Department of Experimental Molecular Imaging, RWTH - Aachen University, Germany,

³Department of Computer Science, University of Technology in Malaysia, Johor Bahru, Malaysia

Abstract— Quantification of vessel density helps to know the stage of the disease during diagnosis and patient’s response to treatment. However, this requires presence of all vessels in the image. The available segmentation techniques that are manual based are prone to errors, tiresome and slow, while some that are automated do face difficulty in distinguishing the vessel tissue from the non-vessel tissue due to the presence of intensity inhomogeneity and noise in images. Therefore, there is need for improved segmentation methods that can extract all sizes of vessels for better quantification of the vessel density and improved decision making during diagnosis. In this paper, a 3D hybrid approach for segmentation has been developed, based on white top hat scale space hessian vessel enhancement filter and multi-threshold Otsu method. The hybrid method can address the intensity inhomogeneity, as a result, more vessels of different sizes are detected. The method is also robust and able to detect abnormalities in the vessels.

Keywords—3-D Segmentation; Heart; Vessels

I. INTRODUCTION

Segmentation of human heart blood vessels plays an important role in a number of clinical procedures such as in the quantification of vessel density, arteriogenesis, stenosis, and tortuosity which requires all the blood vessels (tubular structures) to be detected for proper diagnosis [23]. The complex nature of medical images has made extraction of the tubular structure difficult. The presence of intensity inhomogeneity and noise has led to difficulty in distinguishing vessels from the non-vessels, difficulty in separating arteries from the veins and because of this, most of the researchers have resorted to segmenting 2D image planes rather than 3D whole image which lead to inconsistencies and non-smooth vessel surface in the results. Despite the fact that 2D image segmentation is easy, 3D segmentation provides full information about anatomic structure of the vessels as compared to 2D based segmentation. There are 3D segmentation techniques that segment the whole human heart vessels. Most of these segmentation techniques are model based [29] [31] [32] [34] [42]. Model based segmentation techniques are slow, involve human intervention and find hardship in detecting small vessels and abnormalities in the vessels [28]. Some of the 3D based pattern recognition techniques [44] [45], segment parts rather than the whole human

heart vasculature yet all vessels are needed during quantification of vessel density for better diagnosis. Other pattern recognition techniques claim to be 3D based yet they segment 2D image planes and then later reconstruct to form 3D image [35] [36] [37] [46]. A few 3D based pattern recognition techniques that segment the whole heart are slow, computationally expensive and face difficulty in detecting different sizes of vessels due to the presence of noise and intensity inhomogeneity [33].

In this paper, a 3D hybrid approach has been developed, based on white top hat scale space hessian vessel enhancement filter and multi-threshold Otsu method for the extraction of the whole human heart vasculature in medical images that suffer from intensity inhomogeneity problem.

The rest of the paper is structured as follows: Section II presents the related segmentation methods; Section III discusses the proposed methodology; Section IV presents the experimental results and discussions; Section V concludes the paper.

II. RELATED WORKS

This section briefly reviews some segmentation algorithms. Segmentation techniques employed in the extraction of vessels from medical images are categorized into three classes namely: model based segmentation techniques [24] [29] [31] [32] [34] [41] [42] [43], tracking based segmentation techniques [37], and pattern recognition segmentation techniques [33] [35] [36] [44] [45] [46]. Among the classes of the segmentation, model based segmentation method is a popular and widely used method in the extraction of vessels from the heart. However techniques that employ model based segmentation techniques are time consuming as they require human intervention during parameter setting and model fitting [37] [47] [48]. Model based segmentation techniques find hardship in detecting small vessels and abnormalities in the vessels [28]. Although tracking techniques have the ability to estimate vessel diameter with a high performance, they are slow, involve human intervention and cannot handle vessel crossover points [26] [27].

Pattern recognition methods are associated with high accuracy and are fast methods as they do not involve a lot of human intervention. However, some of the pattern recognition methods segment parts of the vessels instead of the whole heart

vessels and are 2D based although they claim to be 3D based. These techniques analyse 2D image planes and later reconstruct into 3D image which leads to loss of information and non-smooth surface in the segmentation results [30]. Although 3D vessel segmentation is difficult and slow, it provides full information about anatomic vascular structure as compared to 2D vessel segmentation [29] [30].

There are very few pattern recognition techniques that are 3D based and segment the whole human heart. However these techniques are computationally intensive, slow and still find difficulty in distinguishing the vessel tissue from the non-vessel tissue due to presence of intensity inhomogeneity in images. Therefore there is need for 3D pattern recognition techniques that are capable of addressing the intensity inhomogeneity problem in order to distinguish vessel tissue from non-vessels.

Among the pattern recognition methods, Frangi hessian based vessel enhancement filter is popular and widely used for segmentation of vessels because of its capability to detect vessels even in the presence of noise. It also facilitates measurement of vessels such as extraction of diameters of vessels [1] [3] [4] [5] [15]. However Frangi hessian based vessel enhancement filter causes blurriness at the edges of the vessels in magnetic resonance angiogram (MRA) images, slow and face difficulty in segmenting vessels in image with intensity inhomogeneity such as magnetic resonance imaging (MRI) images especially if applied in 3D segmentation [1] [17] [20], improved Frangi hessian based vessel enhancement filter by introducing level set and incorporating an external constrained term based variance into the level set in order to increase the speed of hessian based vesselness filter and also to address the blurriness problem, the method can only work on high contrast images and it is still slow.

According to [10] [11], top hat morphological transformation is good at enhancing the contrast of the image, and better results can be obtained if a multiscale approach is employed with application of appropriate structuring element whose size increases with increase in the scale size. Top hat morphological transform is capable of not only separating different organs but also in enhancing edges of the region of interest, correcting illumination in order to uncover the objects rendered absent in the images and also get rid of the unwanted tissues in MRI image [10] [11]. Recently, [49] improved Frangi hessian based vessel enhancement filter by combining top-hat morphological transform and hessian matrix. The method produced promising results. However it was applied on a 2D image planes and it misses small vessel. It also leads to blurriness in the edges of the vessels due to the use of Gaussian convolution [17] [19], and does not maintain the edges of the small vessels as the vessels (especially small vessels) are split as shown in figure 1c.

Further improvement could include the use of the second order information (Hessian) of the white top-hat morphological transform to analyse the local behaviour of the image to address the problems (such as blurriness) associated with Gaussian convolution and intensity inhomogeneity problem in order to detect vessels.

According to [50] [47], visibility of the small vessels would be enhanced if Frangi hessian based vessel enhancement filter is

combined with anisotropic diffusion, since anisotropic diffusion is capable of reducing noise, preserving geometry, topology and localization of the small vessels. More vessels (especially big vessels) could be extracted using Otsu thresholding [18].

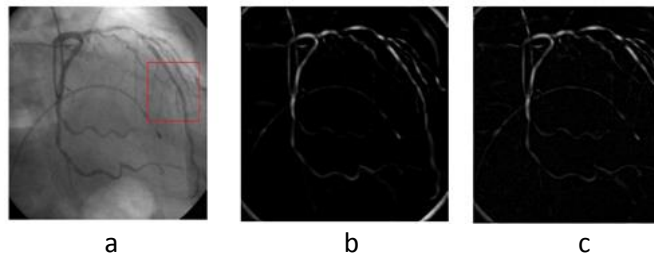


Figure 1: Enhancing results for coronary angiogram image

Otsu thresholding is not only capable of extracting big vessels but it also has an advantage of smaller storage, fast processing speed and ease of manipulation[12] [14] [39] [40]. Otsu thresholding is also computationally inexpensive, [6] [7] [14] [18] [21] [25] [38]. 3D Otsu is more resistant to noise as compared to 1D and 2D based Otsu thresholding and utilizes not only grey levels of pixels but also spatial information [8].

A combination of improved multi-threshold Otsu thresholding, anisotropic diffusion, improved Frangi hessian based vessel enhancement filter and bwareaopen morphological operator would yield better results with improved multi-threshold Otsu thresholding used to extract big vessels, bwareaopen morphological operator used to remove the small objects, Anisotropic diffusion used to maintain the edges of the small vessels and improved Frangi hessian based vessel enhancement filter used to extract capillaries and small vessels.

III. METHOD AND MATERIALS

In order to avoid false detections during segmentation of the heart vessels, the images are segmented while considering the information about the heart vessel structure and also the image modality (MRI). In our approach, segmentation is carried out two times to enable extraction of vessels of different sizes. Improved multi-threshold Otsu and improved Frangi hessian based vessel enhancement filter are used to extract big and medium vessels and small vessels respectively with anisotropic diffusion filter used to maintain the small vessels and bwareaopen morphological operator used to get rid of the very small objects. Multi-thresholding Otsu technique is extended to 3D. One level is utilized to improve processing speed and efficiency in [18]. The efficiency of Frangi hessian based vessel enhancement filter is improved by incorporating white top-hat morphological transform in the hessian based vesselness filter instead of the Gaussian filter in order to increase the speed and efficiency of Frangi hessian based vesselness on images (such as MRI, CT (computed tomography) faced by intensity inhomogeneity. We call the improved Frangi hessian based vessel enhancement filter a white top-hat scale space hessian based vessel enhancement filter. Figure 2 shows the proposed methodology for extraction of the heart vessels.

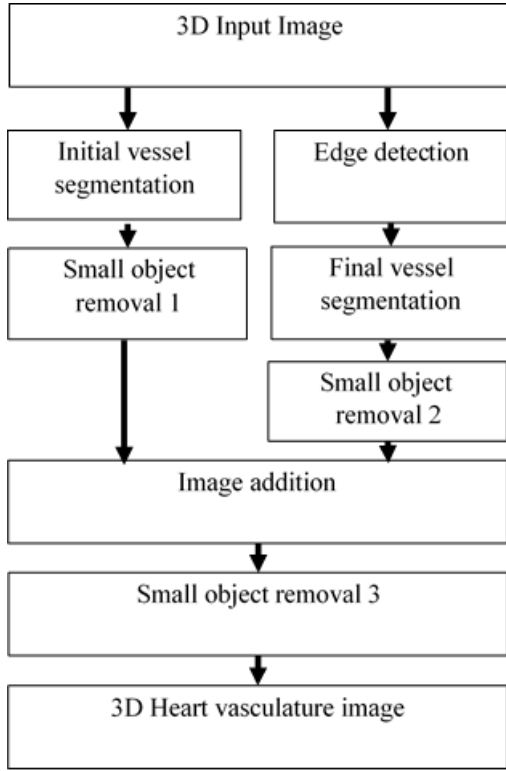


Figure 2: Proposed methodology

Our approach consist of seven stages, during the first stage, different sizes of vessels are segmented using the modified multi-threshold Otsu thresholding. The resulting image is denoised using bwareaopen morphological operator in the second stage.

Since multi-threshold Otsu in [18] is not so good at segmenting small vessels and has a tendency of cutting vessels [2], we then employ white top-hat scale space hessian based vessel enhancement filter for the segmentation of the small vessels during the fourth stage. We chose to apply the white top-hat scale space hessian based vessel enhancement filter to the original image to ensure extraction of small vessels and medium vessels. Since small vessels have weak edges, we used anisotropic diffusion before white top-hat scale space hessian based vessel enhancement filter to detect and maintain edges in the third stage in order to reduce noise, preserve the geometry, topology and localization of the small vessels [47]. We then got rid of the small objects in the image in the fifth stage.

In order to obtain a final segmented vessel image, the results obtained using multi-threshold Otsu and bwareaopen morphological operator are then added to results obtained with white top-hat scale space hessian based vessel enhancement filter, anisotropic diffusion and bwareaopen morphological operator during the sixth stage. The result is then post processed to remove unnecessary objects using bwareaopen morphological operator during the seventh stage.

A. Improved Multi-threshold Otsu Method

2D multi-threshold Otsu thresholding of [18] is extended to 3D multi-level Otsu method and it is used during the iinitial segmentation of vessels of different sizes. 3D multi-threshold

Otsu method is different in such a way that, we just need to adjust the gray levels until we get the optimal threshold. The adjustment of thresholds is done at the beginning of segmentation and there is no human intervention during segmentation after an optimal threshold is obtained. However the threshold is sensitive to gray values. The improved Otsu utilizes single level during segmentation in order to reduce on processing time and avoid loss of the vessels.

B. White Top-Hat Scale Space Hessian based Vessel Enhancement Filter

A multiscale approach is employed with the aim of extracting detailed information at various scales. The size of the structuring element depends on the scale (scale specified in Frangi hessian based vessel enhancement). Increase in the scale leads to increase in the structuring element allowing detailed extraction of information at various scales [16] [22].

Given Frangi vesselness scale space of levels $n= 1, 2, \dots, L$.

Where a level with index L corresponds to a top-hat transform with structuring element size K_n where K_n increases with L .

A white top-hat scale space morphological operator WTH_n is given by:-

$$WTH_n = I - (I \circ K_n)$$

Where I is the image, K_n denote the structuring element used at level n . In this research, we used a square structuring element.

In the Frangi hessian based vessel enhancement filter, the local behavior of the image is analysed using the second order information of the Gaussian, we choose to analyse the local behaviour of an image using the second order information (Hessian) of the white top-hat morphological transform. The eigenvalues obtained from the hessian matrix are used to extract tubular structures (vessels). The hessian matrix in the point x at scale n , is given by:-

$$H(I, x) = \frac{\partial^2 I_n}{\partial x^2} = I(x) * \frac{\partial^2 WTH_n(x)}{\partial x^2} \quad (1)$$

$$WTH = I - M(I)$$

To distinguish tubular structures from blob-like or plate-like structures and background. A dissimilarity measure in equation is used [2].

$$f(x) = \begin{cases} 0 & \text{if } \lambda_2 > 0 \text{ or } \lambda_3 > 0 \\ \left(1 - \exp\left(-\frac{R_a^2}{2\alpha^2}\right)\right) \exp\left(-\frac{R_b^2}{2\beta^2}\right) \left(1 - \exp\left(-\frac{S^2}{2c^2}\right)\right) & \end{cases} \quad (2)$$

where

$$S = \sqrt{\lambda_1^2 + \lambda_2^2 + \lambda_3^2}, R_a = \left|\frac{\lambda_2}{\lambda_3}\right|, R_b = \left|\frac{\lambda_1}{\sqrt{|\lambda_2\lambda_3|}}\right|$$

and α , β and c are thresholds which control the sensitivity of the line filter to the dissimilarity measures R_a , R_b and S .

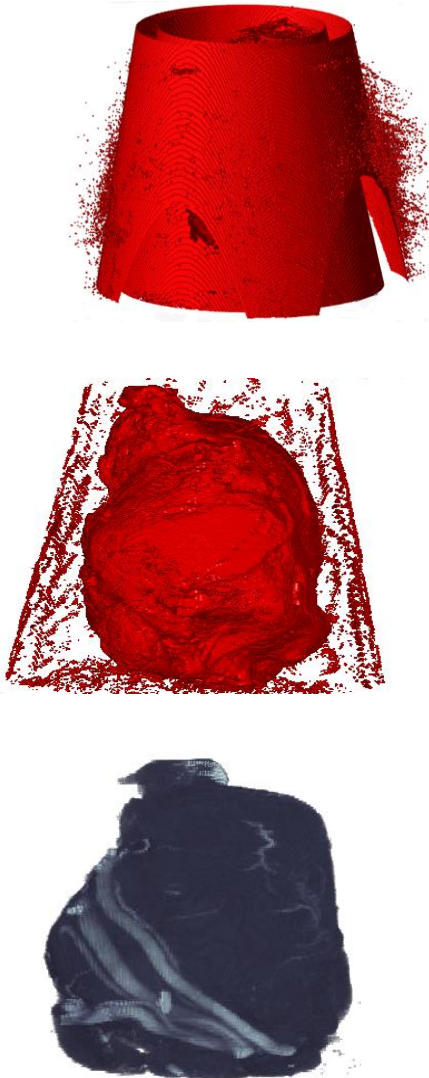


Figure 3: Before vessel extraction

R_a is the ratio of the two biggest eigenvalues that indicates whether the local structure is more plate-like or tube-like, the term R_b accounts for blob-like structures and the term S deals with the difference between vessel and background areas.

The decomposition of the local second order structure of the image extracts the eigenvalues and sort them in ascending order ($|\lambda_1| \leq |\lambda_2| \leq |\lambda_3|$) and principal direction ($\hat{u}_1, \hat{u}_2, \hat{u}_3$).

The above vesselness measure uses the filter responses at different scales taking the maximum response:-

$$V_F(x) = \max_{\delta_{min} \leq \delta \leq \delta_{max}} f(x) \quad (3)$$

IV. EXPERIMENTAL RESULTS

We tested the proposed 3D segmentation method on 5 original MRI images of different sizes obtained from Josef Ehling. The images used in this paper are of size 256x256x300.



Figure 4: After Vessel extraction

240 MRA images from <http://www.osirix-viewer.com/datasets/> of (size= 576x448) captured by MRI 3T Prisma [49]. In all images, vessels and cerebral aneurysm were automatically segmented. Matlab 2016a is used during simulation.



Figure 5: Original image rendered by osirix (left), image using model method in middle, image using the proposed method on the right.

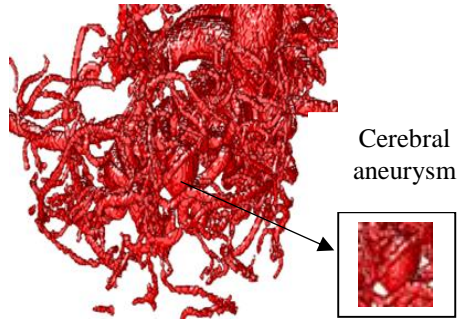


Figure 6: Cerebral aneurysm and associated Vessels.



Figure 7: Cerebral vessels, carotids, aortic arc and cerebral aneurysm

Otsu thresholds of 32, 49 and 50 are used to get rid of the outer tissue, segment out the whole heart and the heart vessels respectively. Otsu Threshold 33 is used in the segmentation of cerebral aneurysm and associated vessels such as cerebral vessels and carotid artery as shown in figure 6, and 7. A scale size ($n = 1, 3$) are used in top-hat scale space based hessian vessel enhancement filter and the parameters used for heart vessel segmentation include $\alpha=0.3$, $\beta=60$, $c=140$

since the vessels give higher response at those scales and parameter. The parameter that were used for anisotropic diffusion for heart vessel segmentation include threshold of 10, 3 iterations and Δt of 0.02.

Different parameters are used because medical images captured by different scan have different features. During post processing, bwareaopen morphological operator was used to remove small objects with pixels below 26. The segmentation results were normalized to the range [0, 255]. Figure 3 show the image before segmentation, removal of the outer tissue surrounding the heart and segmentation of the heart. Figure 4 is

a 3D segmentation of the whole heart. Figure 5 shows segmentation results of cerebral aneurysm using Osirix (left), and segmentation results of proposed method (right). Figure 6 shows segmented cerebral aneurysm and associated vessels. Figure 7 shows segmentation results of the cerebral vessels, carotids and aortic arc.

C. Validation and Evaluation

In medical image analysis, it is very hard to validate, qualitatively and quantitatively compare segmentation methods as it requires ground truth to which the segmentation results can be compared. The ground truth is obtained by an expert who manually analyses and segments the medical images. Unfortunately the ground truth data is not available.

In our study, a visual evaluation of segmentation results is necessary to strongly assess the contribution of this method in segmentation of heart vessels

D. Discussions

Based on the above results, the proposed method is capable of dealing with intensity homogeneity and noise. Multi-threshold Otsu get rid of unwanted tissue and most of the noise in the image. A white top-hat hessian based vessel enhancement is capable of dealing with the intensity inhomogeneity in images, More vessels were detected and different vessels are separated to enable further analysis. The method is capable of also detecting the tumor vessels and the organs associated with the image as shown in figure 6 and figure 7.

The proposed method is better than osirix method and the model based method in [49] as it is capable of detecting more vessels than osirix however the method works well on the MRA, MRI and CT images.

The above results can be used for diagnosis. Abnormalities (such tortuous and stenosis) in the vessels are evident. The method led to over segmentation in the MRI heart images since the white top-hat scale space hessian based vesselness filter was applied on the original image. The next step is to improve the efficiency of the segmentation method and also to quantify vessel density in order to detect abnormal growth in vessels.

IV. CONCLUSION

A 3D robust segmentation approach is presented to deal with the intensity inhomogeneity and noise in MRI images to enable extraction of vessels. A white top-hat hessian based vessel enhancement is used to deal with the intensity inhomogeneity in medical images to enable extraction of vessels. 2D multi-threshold Otsu is extended and improved in order to reduce the processing speed during extraction.

The method is capable of dealing with intensity homogeneity and noise. More vessels were detected and different vessels are separated to enable further analysis. The new method is capable of detecting organs associated with the vessels. The method is also faster and detects different sizes of vessels as compared to 3D segmentation methods. Results are obtained in 260 seconds.

The segmentation method can be used for diagnosis. Abnormalities (such tortuous and stenosis) in the vessels are

evident. The next step is to improve the efficiency of the segmentation method (speed) and also to quantify vessel density in order to detect abnormal growth in vessels.

ACKNOWLEDGEMENT

Faiza Bukenya acknowledges the Islamic Development Bank (IDB) Merit scholarship scheme and University of Nottingham for their generous support. We also thank Joseph Ehling who provided the MRI images for this study.

REFERENCES

- [1] Frangi, A. F., Niessen, W. J., Vincken, K. L., and Viergever, M. A., "Multiscale vessel enhancement filtering," in *Medical Image Computing and Computer-Assisted Intervention MICCAI 1998*, 1998, pp. 130–137
- [2] Glotsos, D., Vassiou, K., Kostopoulos, S. A., Lavdas, E., Kalatzis, I., and Asvestas, P., "A modified Seeded Region Growing algorithm for vessel segmentation in breast MRI images for investigating the nature of potential lesions" *International Conference on Mathematical Modeling in Physics Science*, December 2014.
- [3] Vignati, A., Giannini, V., Carbonaro, L., Bertotto, I., Martincich, L., Sardanelli, F., and Regge, D., "A new algorithm for automatic vascular mapping of dce-mri of the breast: Clinical application of a potential new biomarker," *Computer methods and programs in biomedicine*, 2014, 117(3), 482–488.
- [4] Sato, Y., Nakajima, S., Shiraga, N., Atsumi, H., Yoshida, S., Koller, T., Gerig, G., and Kikinis, R., "Threedimensional multi-scale line filter for segmentation and visual sectional MR image sequences of curvilinear structures in medical images," *Medical image analysis*, 1998, 2(2), pp. 143–168.
- [5] Marcan, M., Pavliha, D., Music, M. M., Fuckan, I., Magjarevic, R., and Miklavcic, D., "Segmentation of hepatic vessels from mri images for planning of electroporation-based treatments in the liver," *Radiology and oncology*, 2004, 48(3), 267–281.
- [6] Selvaraj, D., and R. Dhanasekaran. "Mri brain image segmentation techniques-A review." *Indian national of Computer Science and Engineering*, 2013, 4(5), 364-381.
- [7] Sthitpattanapongsa, P. and Srinark, T., "An equivalent 3d otsu thresholding method," in *Advances in Image and Video Technology*, 2011, 358–369.
- [8] Cheng, Da-Chuan, et al. "Automatic detection of the carotid artery boundary on cross-sectional MR image sequences using a circle model guided dynamic programming." *Biomedical engineering online* 10.1, 2011, 1.
- [9] Hassanpour, H., Samadiani, N., and Salehi, S. M., "Using morphological transforms to enhance the contrast of medical images," *The Egyptian Journal of Radiology and Nuclear Medicine*, 2015, 46(2), 481–489.
- [10] Gade, A., Vig, R., and Kulkarni, V., "Segmentation of tumor region in mri images of brain using mathematical morphology," *International Journal of Image Processing (IJIP)*, 2014, 8(3), 95.
- [11] Zaitoun, N. M. and Aqel, M. J., "Survey on image segmentation techniques," *Procedia Computer Science*, 2015, 65, 797–806.
- [12] Abutaleb, A. S., "Automatic thresholding of gray-level pictures using two-dimensional entropy," *Computer vision, graphics, and image processing*, 1989, 47(1), 22–32.
- [13] Kamarudin, N. S., Makhtar, M., Fadzli, S. A., Mohamad, M., Mohamad, F. S., and Kadir, M. F. A., "Comparison of image classification techniques using caltech 101 dataset," *Journal of Theoretical & Applied Information Technology*, 2015, 71(1) .
- [14] Lei, W., Huichuan, D., and Jinling, W., "A fast algorithm for three-dimensional otsu thresholding method," in *IEEE International Symposium on IT in Medicine and Education*, 2008.
- [15] Jimenez-Carretero, D., Santos, A., Kerkstra, S., Dewi Rudyanto, R., and Ledesma-Carbayo, M. J., "3d frangi-based lung vessel enhancement filter penalizing airways," in [*Biomedical Imaging (ISBI)*, 2013 IEEE 10th International Symposium on], 2013, 926–929, IEEE .
- [16] Jalba, A. C., Wilkinson, M. H., and Roerdink, J. B., "Morphological hat-transform scale spaces and their use in pattern classification," *Pattern Recognition*, 2004, 37(5), 901–915.
- [17] Jin, Jiaoying, et al. "Vascular tree segmentation in medical images using hessian-based multiscale filtering and level set method." *Computational and mathematical methods in medicine* 2013 .
- [18] Xiaochuan He, Zhenkuan Pan, Qian Dong, Guodong Wang , "Veins Segmentation and Three-Dimensional Reconstruction from Liver CT Images Using Multilevel OTSU Method," *Seventh International Conference on Image and Graphics*, 2013.
- [19] Jin, jiaoying and yang, linjun and zhang, xuming and ding, mingyue, "Vascular tree segmentation in medical images using hessian-based multiscale filtering and level set method," *Computational and mathematical methods in medicine*. 2013.
- [20] Deepa S and SubbiahBharathi V, "Efficient ROI Segmentation of Digma Mammogram Images using Otsu's N thresholding method," *International Journal of Engineering Research & Technology*, 2013, vol. 2.
- [21] Klaus D. Toennies, "Guide to Medical Image Analysis: Methods and Algorithms," Springer Science & Business Media, 2012.
- [22] Jalba, Andrei C and Wilkinson, Michael HF and Roerdink, Jos BTM, "Morphological hat-transform scale spaces and their use in pattern classification," *Pattern Recognition*, 2004, vol. 37, 901--915.
- [23] Xing Zhang, Jie Tian, Kexin Deng, Xiuli Li and Fei Yang, "Graph representation of hepatic vessel based on centerline extraction and junction detection," *Proc. SPIE 8314, Medical Imaging 2012: Image Processing*, 2012, doi:10.1117/12.911126; http://dx.doi.org/10.1117/12.911126.
- [24] Xing-ce, Wang, et al. "The study of pre-processing method of brain vessel segmentation based on parameterized statistical model." *Bio-Inspired Computing: Theories and Applications (BIC-TA)*, 2010 IEEE Fifth International Conference on. IEEE, 2010.
- [25] Qu, Zhong and Zhang, Li, "Research on image segmentation based on the improved Otsu algorithm," *Intelligent Human-Machine Systems and Cybernetics (IHMSC)*, IEEE, vol.2, 228—2.
- [26] Razieh Ganjee, Reza Azmi, Behrouz Gholizadeh, "An Improved Retinal Vessel Segmentation Method Based on High Level Features for Pathological Images," *Journal of Medical Systems*, September, 2014, 38(9):108 .
- [27] Budai, A., Bock, R., Maier, A., Hornegger, J., & Michelson, G, "Robust vessel segmentation in fundus images," *International journal of biomedical imaging*, 2013.
- [28] Zhu, N., & Chung, A, "Graph-based optimization with tubularity markov tree for 3d vessel segmentation," In *Proceedings of the IEEE Conference on Computer Vision and Pattern Recognition*, 2013, pp. 2219-2226.
- [29] Despotović, I., Goossens, B., & Philips, W, "MRI segmentation of the human brain: challenges, methods, and applications," *Computational and mathematical methods in medicine*, 2015.
- [30] Wörz, S., & Rohr, K, "3D adaptive model-based segmentation of human vessels," In *Medical Imaging, International Society for Optics and Photonics*, March, 2007. pp. 65110Q-65110Q.
- [31] Ecabert, O., Peters, J., Walker, M. J., Ivanc, T., Lorenz, C., von Berg, J., & Weese, J, "Segmentation of the heart and great vessels in CT images using a model-based adaptation framework," *Medical image analysis*, 2011, 15(6), 863-876.
- [32] Latha, R., and S. Senthilkumar, "Robust segmentation of blood vessels from angiographic images of the human heart." *International Conference on Communication and Computational Intelligence (INCOCCI)*, 2010.
- [33] Krissian, Karl, et al, "Model-based detection of tubular structures in 3D images." *Computer vision and image understanding*, 2000, 80.2 130-171.
- [34] Makowski, Piotr, et al. "Two-phase active contour method for semiautomatic segmentation of the heart and blood vessels from MRI images for 3D visualization," *Computerized Medical Imaging and Graphics*, 2002, 26.1, pp. 9-17.
- [35] Cheng, Da-Chuan, et al, "Automatic detection of the carotid artery boundary on cross-sectional MR image sequences using a circle model guided dynamic programming," *Biomedical engineering online*, 2011, 10.1.

- [36] Bitter, Ingmar, et al, "Virtual Contrast for Coronary Vessels Based on Level Set Generated Subvoxel Accurate Centerlines," International journal of biomedical imaging, 2006.
- [37] Sharma, Neeraj, and Lalit M. Aggarwal. "Automated medical image segmentation techniques." Journal of medical physics, 2010, 35.1, pp. 3.
- [38] Samantaa, Sourav, et al. "Multilevel threshold based gray scale image segmentation using cuckoo search," 2013, arXiv preprint arXiv:1307.0277 .
- [39] DICOM Sample Image dataset, <http://www.osirix-viewer.com/datasets/>. Accessed 22 Feb 2016.
- [40] Chen, Zikuan, and Sabeel Molloy. "Automatic 3D vascular tree construction in CT angiography." Computerized Medical Imaging and Graphics, 2003, 27.6, 469-479.
- [41] Langs, Georg, Petia Radeva, and Francesc Carreras. "Explorative Building of 3D Vessel Tree Models 1)." 2004.
- [42] Aqeel Al-Surmi, Email author, Rahmita Wirza, Ramlan Mahmod, Fatimah Khalid and Mohd Zamrin Dimon, "A new human heart vessel identification, segmentation and 3D reconstruction mechanism". Journal of Cardiothoracic Surgery, 2014.
- [43] Md. Motiur Rahman, Dr. Md. Shorif Uddin, Md. Mosaddik Hasan, "3D Segmentation and Visualization of Left Coronary Arteries of Heart Using CT Images," 2010.
- [44] Chen, Shuo-Tsung, et al. "Coronary Arteries Segmentation Based on the 3D Discrete Wavelet Transform and 3D Neutrosophic Transform." BioMed research international 2015.
- [45] Cline, Harvey E., et al. "3D MR coronary artery segmentation." Magnetic resonance in medicine, 1998, 40.5, 697-702.
- [46] R. Manniesing, M. Viergever, W. Niessen. "Vessel axis tracking using topology constrained surface evolution," IEEE Transactions on Medical Imaging, 2007, Vol 26(3), pp. 309–316.
- [47] N. Flasque, M. Desvignes, J.-M. Constans, M. Revenu, "Acquisition, segmentation and tracking of the cerebral vascular tree on 3D magnetic resonance angiography images," Medical Image Analysis, 2001, Vol. 5 (3), pp. 173–183.
- [48] Ding, Y., et al. "Three-dimensional vessel segmentation using a novel combinatory filter framework." Physics in medicine and biology, 2014, Vol. 59.22, pp.7013.
- [49] Zhu, Ning, and Albert CS Chung. "Random Walks with Adaptive Cylinder Flux Based Connectivity for Vessel Segmentation." International Conference on Medical Image Computing and Computer-Assisted Intervention. Springer Berlin Heidelberg, 2013.
- [50] Shashank, Mahua Bhattacharya, G K Sharma, "Optimized Coronary Artery Segmentation Using Frangi Filter and Anisotropic Diffusion Filtering," 2013