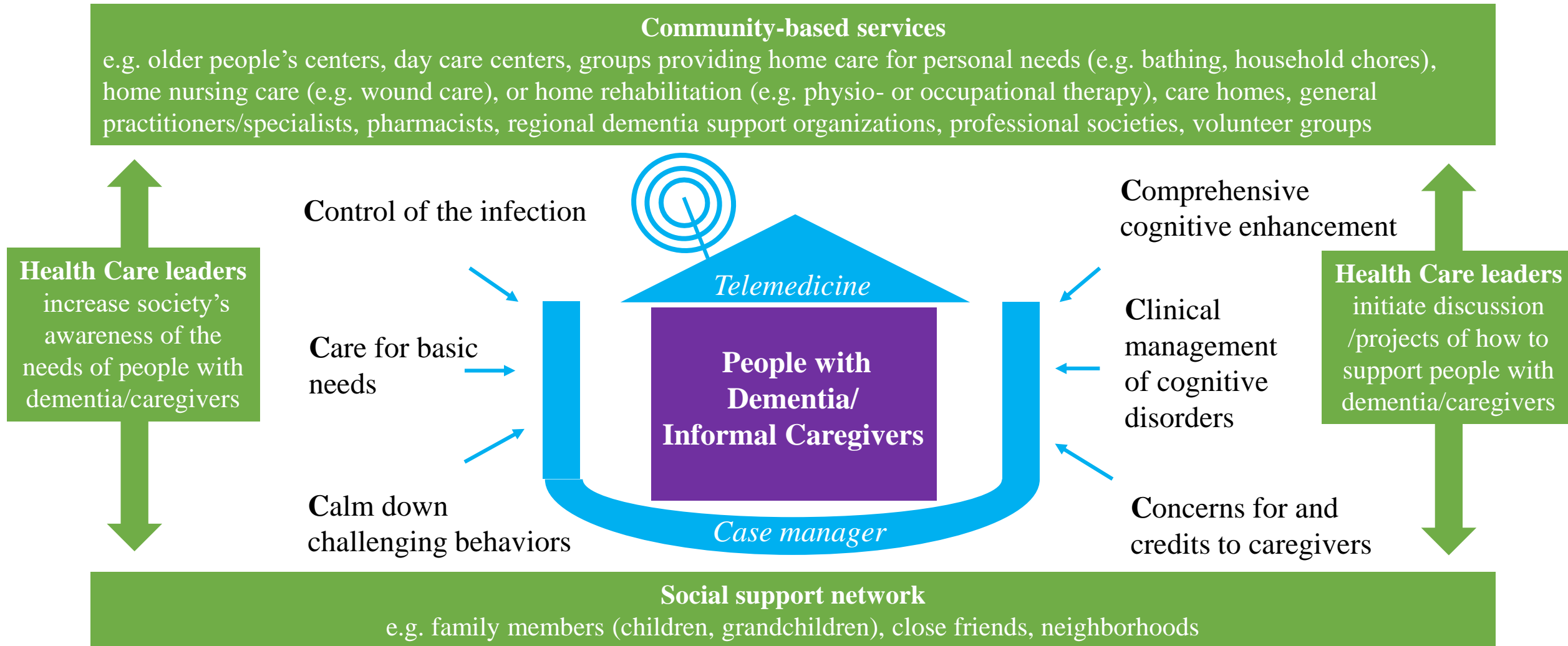


Figure. Conceptual framework of home-based care strategies amid COVID-19 pandemic



It will be ideal if a case manager can help to coordinate care across the continuum of community-based services and to partner with persons from the social support network, with special focus in managing the following key areas: implementing infection control measures at home, care for basic needs, tackling behavioral problems, maintaining brain-healthy life-style activities, managing medical/cognitive problems, show concerns for and appreciation to caregivers. Although user-friendly telehealth technologies can facilitate better care delivery in many ways, making simple phone calls may sometime serve a similar purpose.