

Figure Legends

Fig 1: Mechanisms of leptomeningeal dissemination from primary brain tumors via CSF or haematogenous routes. From <https://www.ncbi.nlm.nih.gov/pubmed/29474906>.
Ask for copyright

Fig 4: Routes of administration for intra-CSF therapy (VR - ventricular route; LR – lumbar route). LR can be used in patients with ventriculoperitoneal shunts

(Obviously to be re-numbered Fig 2)

Figure 1 (Remove mouse from re-drawn image)

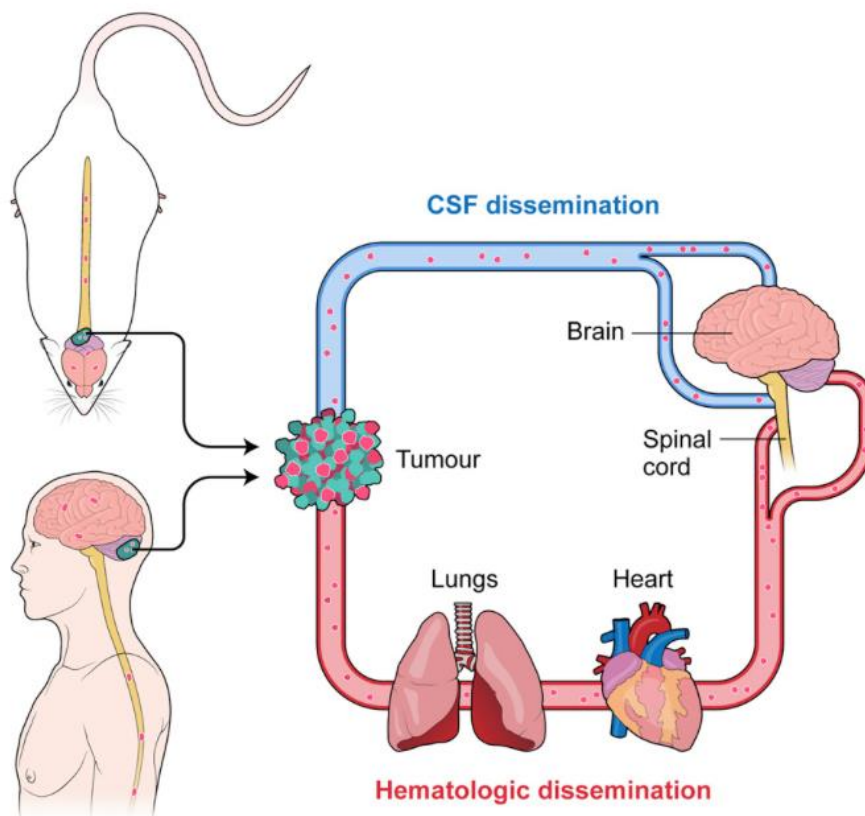
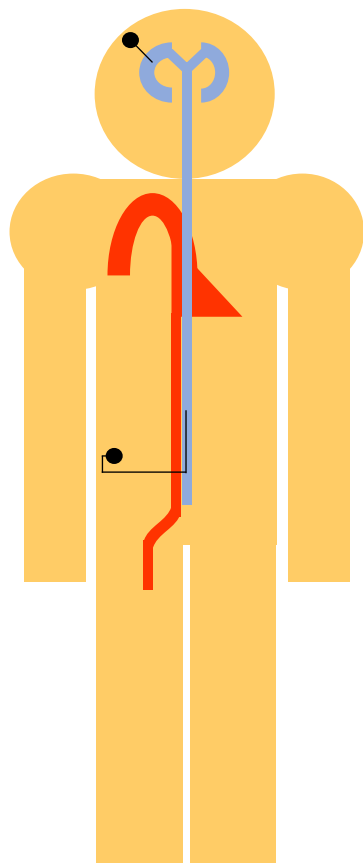
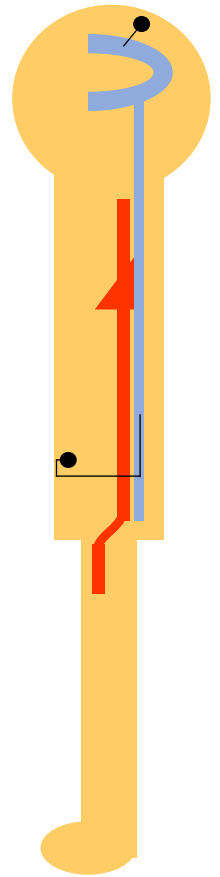


Figure 4 (To be renumbered Figure 2)



VR: **ventricular route**
Through Ommaya reservoir

LR: **lumbar route**
Through Port-A-Cath with
lumbar line extension



Blue is cerebrospinal fluid space
Red is blood space