



OPEN ACCESS

# A refresh of the top 10 research priorities in cystic fibrosis

Nicola Jane Rowbotham <sup>1</sup>, Sherie Smith,<sup>1</sup> Zoe C Elliott,<sup>2</sup> Belinda Cupid,<sup>3</sup> Lorna J Allen,<sup>3</sup> Katherine Cowan,<sup>4</sup> Lucy Allen,<sup>3</sup> Alan Robert Smyth <sup>1,5</sup>

<sup>1</sup>University of Nottingham School of Medicine, Nottingham, UK

<sup>2</sup>Parent of Children with CF, Nottingham, UK

<sup>3</sup>Cystic Fibrosis Trust, London, UK

<sup>4</sup>James Lind Alliance, Southampton, UK

<sup>5</sup>NIHR Nottingham Biomedical Research Centre, Nottingham, UK

## Correspondence to

Dr Nicola Jane Rowbotham, University of Nottingham School of Medicine, Nottingham, NG7 2UH, UK; nicola.rowbotham@nottingham.ac.uk

## ABSTRACT

In 2018 we published the James Lind Alliance (JLA) top 10 priorities for clinical research in cystic fibrosis (CF), chosen jointly by the patient and clinical communities. These priorities have led to new research funding. To establish whether priorities have changed with novel modulator therapies, we undertook an online international update through a series of surveys and a workshop. Patients and clinicians (n=1417) chose the refreshed top 10 from 971 new research questions (suggested by patients and clinicians) and 15 questions from 2018. We are working with the international community to promote research based on these refreshed top 10 priorities.

## INTRODUCTION

In 2018 we published the top ten research priorities for cystic fibrosis (CF), jointly developed by the CF patient and clinical communities.<sup>1</sup> These attracted global interest and have led to new research in CF which focuses on the concerns of patients. Funders have adopted these priorities leading to at least £23 million of UK funding alone.<sup>2</sup> Much has changed in CF over the past 5 years, with the CF transmembrane conductance regulator (CFTR) modulator therapy available to many (but not all) people with CF (pwCF). The COVID-19 pandemic has also brought changes, with clinical care and research visits taking place virtually. Changes in research delivery may also affect research priorities. It was therefore timely to refresh the top ten priorities for clinical research in CF to ensure that they remain relevant to the CF community.

The original top ten priorities were produced by working with the NIHR-supported James Lind Alliance (JLA) who facilitate priority setting partnerships (PSPs) using methodology which brings patients, carers and clinicians together to prioritise research questions. We were the first PSP to undertake a refresh of disease-specific research priorities and have worked with the support of the JLA Lab – an exploratory space that supports innovation.<sup>3</sup> Here we describe our methodology and results.

## METHODS

Our PSP refresh took place October 2021 – November 2022. We published our protocol before commencing.<sup>4</sup> As no PSP refresh had occurred previously, we created novel methodology adapting standard JLA methods for priority setting.<sup>5</sup> We appointed a steering group, representative of the international CF community, for oversight and

a smaller management group, for operational delivery.

From January to February 2022, we conducted the first of two online surveys (Survey Monkey). The elicitation survey requested respondent demographics and asked participants to select their top three priorities from the previous top twenty questions. Respondents were also asked to submit up to two new priorities. Surveys were advertised through professional and charity groups and our bespoke Twitter account (@questionCF). Both surveys were available in multiple languages. In a change to our original PSP, non-industry researchers were also invited to participate in the refresh.

Two researchers (NR and SS) independently reviewed all submissions with adjudication by the steering and management groups. Responses which did not include a question and out of scope questions were removed. Where several questions addressed the same issue, they were consolidated into a single “umbrella question”. Any question already answered in the scientific literature was removed.<sup>6</sup>

The standardised umbrella questions were then taken forward to the prioritisation survey (September – October 2022). This allowed respondents to rank their top ten questions. Cumulative scores were calculated for each question and the questions ranked in priority order for the following four groups:

- ▶ pwCF
- ▶ The subgroup of pwCF who currently do not have access to CFTR modulators
- ▶ Friends and family of pwCF
- ▶ Healthcare professionals and researchers

Questions in the top ten priorities for each of the three main groups, plus the top five for the subgroup of pwCF not on CFTR modulators (online supplemental 1), were then discussed at an online workshop in November 2022, facilitated by the JLA. Lay and professional participants (recruited from people who completed a widely advertised expression of interest form) selected the final refreshed top ten research priorities. The process involved small group discussion and plenary voting, with all participants having an equal voice.

## RESULTS

We had 1608 responses from 1370 respondents to the elicitation survey (59 responses were ‘empty’ and 179 respondents completed the survey more than once). An additional 971 questions were submitted. [table 1](#) shows the demographics of respondents. There were 493 (36%) respondents



© Author(s) (or their employer(s)) 2023. Re-use permitted under CC BY. Published by BMJ.

**To cite:** Rowbotham NJ, Smith S, Elliott ZC, *et al.* *Thorax* Epub ahead of print: [please include Day Month Year]. doi:10.1136/thorax-2023-220100

**Table 1** Demographic characteristics of respondents to survey 1 and survey 2

	Survey 1 (n=1370)	Survey 2 (n=1417)
Category of respondent		
People with CF	493 (36%)	477 (34%)
Family & Friends	515 (38%)	522 (37%)
Parent of person with CF	353	404
Spouses or partners	29	13
Other family & friends	133	105
Professionals	362 (26%)	418 (29%)
Medical Doctor	83	111
Non-industry Researcher	76	94
Physiotherapist	61	49
Dietician	45	25
Nurse	37	50
Psychologist	19	17
Pharmacist	15	24
Social Worker	9	11
Clinical trial coordinator	4	10
Other	13	21
Unknown	0	6
Country		
UK	619 (45%)	515 (36%)
USA & Canada	83 (6%)	210 (15%)
Rest of Europe	531 (39%)	536 (38%)
Australia & New Zealand	59 (4%)	69 (5%)
Other	10 (1%)	34 (2%)
Unknown	68 (5%)	53 (4%)
Demographics of respondent with CF (or the family member with CF)		
Age (years)	27 (0–79)	26 (0–80)
Gender	(n=955)	(n=948)
Male	397 (42%)	384 (41%)
Female	539 (56%)	561 (59%)
Other	19 (2%)	3 (0%)
Taking Modulators?	(n=948)	(n=951)
Yes	613 (64%)	590 (62%)
No	197 (21%)	192 (20%)
Not Yet eligible	138 (15%)	169 (18%)

Data are presented as number count (%) or median (range). Denominators are expressed as “n=x” where they vary from the total number of survey respondents.

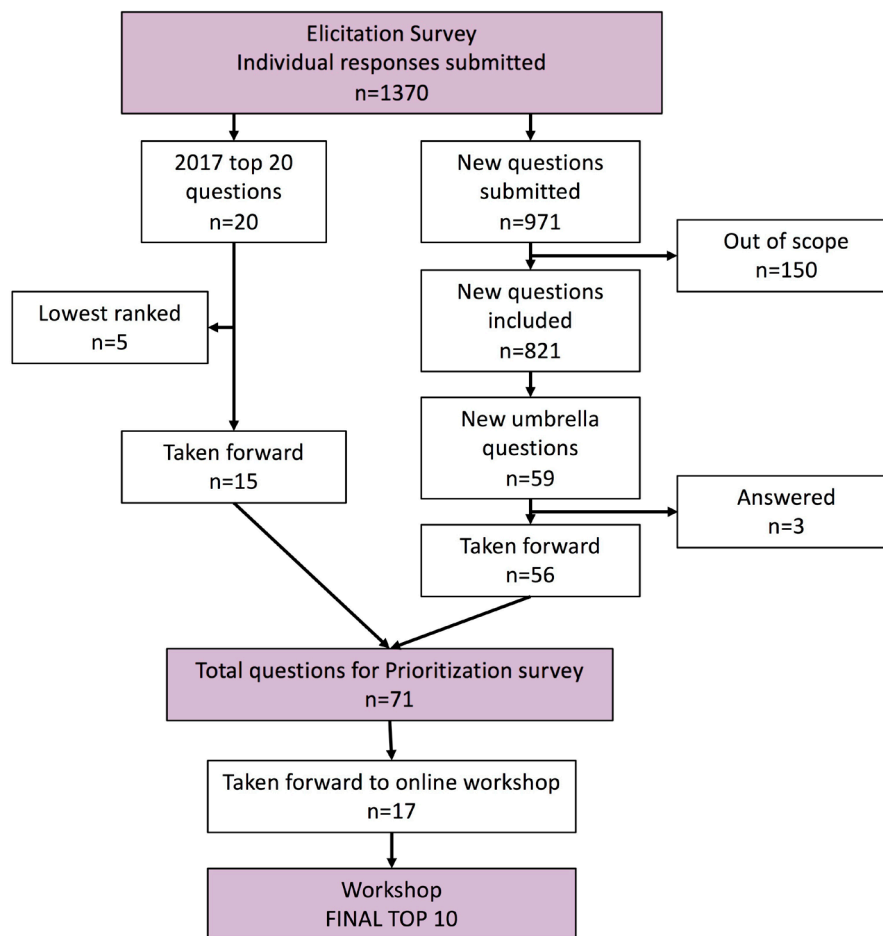
with CF, 515 (38%) family and friends and 362 (26%) health-care professionals and researchers. Just over 45% were from the UK, with submissions from 29 countries in total.

Figure 1 describes how the new and existing questions were sorted and refined. There were 821 “in scope” questions which were combined into 59 new umbrella questions. After the checking process three were removed (as they have already been answered) leaving 56 new questions. These were added to the top 15 questions from the previous top 20 and 71 questions were taken to the prioritisation survey. We had 1583 responses to the prioritisation survey (survey 2), completed by 1417 individual respondents, once empty and multiple responses were removed (see table 1 for demographics). The final top 10 questions agreed at the online workshop are shown in figure 2.

## DISCUSSION

This is the first refresh exercise to update the JLA top 10 priorities for a specific medical condition. Our methodology ensured equal participation from people with CF, their family and friends and the clinical/research communities. We have produced a refreshed top 10 list of research questions, which should guide researchers and funders. Four priorities were identified in the original PSP and remain priorities. Six priorities were newly identified by the PSP refresh.

A strength of our study is its international reach. We had a large number of respondents, from countries across the world. While CF is predominantly a disease of Northern European descent, recent prevalence studies show an increase in countries where it was not previously reported.<sup>7</sup> We acknowledge that our



**Figure 1** Flow chart showing question processing at the different stages of the James Lind Alliance Priority Setting Partnership refresh in CF.

respondents may not be truly representative of the global community as it stands. Data from the UK registry (for 2021) indicate that approximately 32% of pwCF are not currently taking CFTR modulators. In our surveys 36% (elicitation) and 38% (prioritisation) of respondents (or the affected family member) were not taking a CFTR modulator. We adapted the JLA methodology to ensure the top five priorities, for this important sub-group

of pwCF, were included in the 17 questions going to the final workshop to choose the top 10.

With the arrival of transformational therapies, available to most (but not all) pwCF, it is vital that the research priorities of funders and researchers remain aligned with those of the patient and clinical communities. Publication of the previous JLA top 10 priorities for CF has led to international funding (via NIHR, CF

2018 Priorities	2023 Priorities
<b>1. What are the effective ways of simplifying the treatment burden of people with CF?</b>	1. What options are available for those not able to take current CFTR modulators (including rarer mutations, not eligible and unable to tolerate)?
<b>2. How can we relieve gastro-intestinal symptoms, such as stomach pain, bloating and nausea?</b>	2. What is the best way to diagnose lung infection when there is no sputum e.g. children and those on modulators?
3. What is the best treatment for non-tuberculous mycobacterium (including when to start and what medication)?	<b>3. How can we relieve gastro-intestinal symptoms, such as stomach pain, bloating and nausea?</b>
4. Which therapies are effective in delaying or preventing progression of lung disease in early life?	4. How do we manage an ageing population with CF?
<b>5. Is there a way of preventing CF related diabetes?</b>	<b>5. Is there a way of reducing the negative effects of antibiotics e.g. resistance risk and adverse symptoms in people with CF?</b>
6. What effective ways of motivation, support and technologies help people with CF improve and sustain adherence to treatment?	6. What are the long-term effects of medications (including CFTR modulators) in CF?
7. Can exercise replace chest physiotherapy?	7. What are the effects of modulators on systems outside the lungs such as pancreatic function, liver disease, gastro-intestinal, bone density etc.?
8. Which antibiotic combinations and dosing plans should be used for CF exacerbations and should antibiotic combinations be rotated?	<b>8. What are the effective ways of simplifying the treatment burden of people with CF?</b>
<b>9. Is there a way of reducing the negative effects of antibiotics e.g. resistance risk and adverse symptoms in people with CF?</b>	9. Can genetic therapies (such as gene editing, stem cell and mRNA technology) be used as a treatment for CF?
10. What is the best way of eradicating <i>Pseudomonas aeruginosa</i> ?	<b>10. Is there a way of preventing CF related diabetes (CFRD) in people with CF?</b>

**Figure 2** The top 10 questions for research in cystic fibrosis in 2018 and 2023. Those marked in bold feature in both.

Trust and CF Foundation for example) for many clinical studies designed to address these priorities.<sup>2</sup>

The previous PSP led directly to the CF-STORM trial (ongoing, ISRCTN14081521) which was developed in response to Question 1 (“What are the effective ways of simplifying the treatment burden of people with Cystic Fibrosis?”) and to the GIFT-CF research programme<sup>8</sup> designed to start addressing Question 2 (How can we relieve gastro-intestinal symptoms such as stomach pain, bloating and nausea?). Our refreshed JLA top 10 highlights a shift towards longer term priorities and maintenance of health and offers a similar opportunity to the CF research community and their funders to deliver new research addressing these patient and clinician priorities.

**Twitter** Nicola Jane Rowbotham @nicrowbotham

**Acknowledgements** The refresh of our JLA Priority Setting Partnership in CF has only been possible due to the enthusiastic contributions from people with CF, their family and friends, health care professionals and other key members of the CF community. Organizations that contributed towards this process include the CF Trust, CF Aware, JLA, CF Foundation, CF Canada, Dutch CF foundation, CF Europe and the Cochrane Cystic Fibrosis & Genetic Disorders Group.

**Contributors** This was a highly collaborative project with involvement and valid contribution from all authors at all stages of the process. Specifically, NJR contributed to the design of project, project promotion, data collection and analysis, writing of the initial manuscript draft, figure creation and revision of the manuscript and is guarantor of the manuscript content. SS contributed to design of project, project promotion, data collection and analysis, writing and revision of the manuscript. ZCE contributed to project design, promotion and marketing strategy, sense checking data analysis, reviewing the manuscript and providing patient representation. BC contributed to project design, promotion and marketing strategy, sense checking data analysis and reviewing the manuscript. LJA contributed to project design, project promotion, sense checking data analysis, reviewing the manuscript and providing patient representation. KC contributed to design of the project, facilitation of meetings and reviewing the manuscript. LA contributed to project design, project promotion, sense checking data analysis and reviewing the manuscript. ARS was overall lead for the project and contributed to project design, project promotion, sense checking data analysis and reviewing the manuscript.

**Funding** The project was supported by in kind support from the CF Trust, University of Nottingham and Cochrane and a participatory funding award from Research England.

**Competing interests** NJR reports support from Cystic Fibrosis Trust for attending meetings. KC reports consultancy fees for facilitation services with James Lind Alliance and CF Trust. ARS reports a Vertex Pharmaceuticals Investigator Sponsored Study Award (paid to University of Nottingham) and consultancy fees for Viatrix Advisory Board (paid to University of Nottingham), a patent (Camara M, Williams P, Barrett D, Halliday N, Knox A, Smyth A, Fogarty A, Barr H, Forrester D. Alkyl quinolones as biomarkers of pseudomonas aeruginosa infection and uses thereof. PubChem [Internet]. Bethesda (MD): National Library of Medicine (US), National Center for Biotechnology Information; 2004-. PubChem Patent Summary for US-2016131648-A1; [cited 2020 Nov. 17]. Available from: <https://pubchem.ncbi.nlm.nih.gov/patent/US-2016131648-A1>) and participation on the US CF Foundation data safety monitoring board.

nih.gov/patent/US-2016131648-A1) and participation on the US CF Foundation data safety monitoring board.

**Patient consent for publication** Not applicable.

**Ethics approval** This study involves human participants but The University of Nottingham Research Ethics Committee deemed this work not to require ethical approval exempted this study Participants gave informed consent to participate in the study before taking part.

**Provenance and peer review** Not commissioned; externally peer reviewed.

**Supplemental material** This content has been supplied by the author(s). It has not been vetted by BMJ Publishing Group Limited (BMJ) and may not have been peer-reviewed. Any opinions or recommendations discussed are solely those of the author(s) and are not endorsed by BMJ. BMJ disclaims all liability and responsibility arising from any reliance placed on the content. Where the content includes any translated material, BMJ does not warrant the accuracy and reliability of the translations (including but not limited to local regulations, clinical guidelines, terminology, drug names and drug dosages), and is not responsible for any error and/or omissions arising from translation and adaptation or otherwise.

**Open access** This is an open access article distributed in accordance with the Creative Commons Attribution 4.0 Unported (CC BY 4.0) license, which permits others to copy, redistribute, remix, transform and build upon this work for any purpose, provided the original work is properly cited, a link to the licence is given, and indication of whether changes were made. See: <https://creativecommons.org/licenses/by/4.0/>.

#### ORCID iDs

Nicola Jane Rowbotham <http://orcid.org/0000-0003-1105-3645>  
Alan Robert Smyth <http://orcid.org/0000-0001-5494-5438>

#### REFERENCES

- Rowbotham NJ, Smith S, Leighton PA, *et al*. The top 10 research priorities in cystic fibrosis developed by a partnership between people with CF and healthcare providers. *Thorax* 2018;73:388–90.
- James Lind Alliance. You said, we did: how the cystic fibrosis priorities have been addressed since they were agreed in 2017. National Institute for Health Research; 2021. Available: <https://www.jla.nihr.ac.uk/news/you-said-we-did-how-the-cystic-fibrosis-priorities-have-been-addressed-since-they-were-agreed-in-2017/29365>
- James Lind Alliance. The JLA lab. National Institute for health research; 2023. Available: <https://www.jla.nihr.ac.uk/jla-lab.htm>
- James Lind Alliance. Cystic fibrosis research priorities refresh protocol. National Institute for Health Research; 2021. Available: <https://www.jla.nihr.ac.uk/documents/cystic-fibrosis-research-priorities-refresh-protocol/29556>
- James Lind Alliance. JLA guidebook version 10. National Institute for Health Research; 2021. Available: <https://www.jla.nihr.ac.uk/jla-guidebook/>
- James Lind Alliance. Cystic fibrosis refresh priorities final sheet of data. National Institute for Health Research; 2023. Available: <https://www.jla.nihr.ac.uk/priority-setting-partnerships/cystic-fibrosis-refresh>
- Burgel P-R, Burnet E, Regard L, *et al*. The changing epidemiology of cystic fibrosis: the implications for adult care. *Chest* 2023;163:89–99.
- Ng C, Dellschaft NS, Hoard CL, *et al*. Postprandial changes in gastrointestinal function and transit in cystic fibrosis assessed by magnetic resonance imaging. *J Cyst Fibros* 2021;20:591–7.