



Time to Endoscopy for Acute Upper Gastrointestinal Bleeding: Results from a Prospective Multicentre Trainee-Led Audit

Journal:	<i>United European Gastroenterology Journal</i>
Manuscript ID	UEG-18-0351.R1
Manuscript Type:	Original Article
Date Submitted by the Author:	24-Sep-2018
Complete List of Authors:	<p>Siau, Keith; Joint Advisory Group, Quality Assurance Team; Dudley Group NHS Foundation Trust, Hodson, James; Queen Elizabeth Hospital Birmingham, Institute of Translational Medicine Ingram, Richard; Gastroenterology Audit and Research Network East Midlands (GARNet) Baxter, Andrew; Gastroenterology Audit and Research Network East Midlands (GARNet) Widlak, Monika; West Midlands Research in Gastroenterology (WMRIG) Sharratt, Caroline ; Gastroenterology Audit and Research Network East Midlands (GARNet) Baker, Graham; West Midlands Research in Gastroenterology (WMRIG) Troth, Tom; West Midlands Research in Gastroenterology (WMRIG) Hicken, Ben; West Midlands Research in Gastroenterology (WMRIG) Tahir, Faraz; West Midlands Research in Gastroenterology (WMRIG) Magrabi, Malik; West Midlands Research in Gastroenterology (WMRIG) Yousaf , Nouman; West Midlands Research in Gastroenterology (WMRIG) Grant, Claire; Gastroenterology Audit and Research Network East Midlands (GARNet) Poon, Dennis ; Gastroenterology Audit and Research Network East Midlands (GARNet) Khalil , Hesham ; Gastroenterology Audit and Research Network East Midlands (GARNet) Lee, Hui Lin; Gastroenterology Audit and Research Network East Midlands (GARNet) White, Jonathan; Gastroenterology Audit and Research Network East Midlands (GARNet) Tan, Huey; Gastroenterology Audit and Research Network East Midlands (GARNet)</p>

1	
2	
3	
4	Samani, Syazeddy; Gastroenterology Audit and Research Network East Midlands (GARNet)
5	Hooper, Patricia ; Gastroenterology Audit and Research Network East Midlands (GARNet)
6	Ahmed, Saeed ; Gastroenterology Audit and Research Network East Midlands (GARNet)
7	Amin, Muhammad; Gastroenterology Audit and Research Network East Midlands (GARNet)
8	Mahgoub, Sara ; West Midlands Research in Gastroenterology (WMRIG)
9	Asghar, Khayal; Gastroenterology Audit and Research Network East Midlands (GARNet)
10	Leet, Farique ; West Midlands Research in Gastroenterology (WMRIG)
11	Harborne , Matthew; West Midlands Research in Gastroenterology (WMRIG)
12	Polewiczowska , Beata; West Midlands Research in Gastroenterology (WMRIG)
13	Khan , Sheeba ; West Midlands Research in Gastroenterology (WMRIG)
14	Anjum, Muhammad Raheel; West Midlands Research in Gastroenterology (WMRIG)
15	McFarlane, Michael ; West Midlands Research in Gastroenterology (WMRIG)
16	Mozdiak, Ella ; West Midlands Research in Gastroenterology (WMRIG)
17	O'Flynn, Lauren; West Midlands Research in Gastroenterology (WMRIG)
18	Blee, Ilona; West Midlands Research in Gastroenterology (WMRIG)
19	Molyneux, Rachel ; West Midlands Research in Gastroenterology (WMRIG)
20	Kurian, Ashok; West Midlands Research in Gastroenterology (WMRIG)
21	Abbas, Syed; West Midlands Research in Gastroenterology (WMRIG)
22	Abbasi, Abdullah; West Midlands Research in Gastroenterology (WMRIG)
23	Karim, Aadil ; West Midlands Research in Gastroenterology (WMRIG)
24	Yasin, Asif ; West Midlands Research in Gastroenterology (WMRIG)
25	Khattak, Fawad; West Midlands Research in Gastroenterology (WMRIG)
26	White, Josephine ; West Midlands Research in Gastroenterology (WMRIG)
27	Ahmed, Ruhina; West Midlands Research in Gastroenterology (WMRIG)
28	Morgan, James; West Midlands Research in Gastroenterology (WMRIG)
29	Alleyne, Lance ; West Midlands Research in Gastroenterology (WMRIG)
30	Alam, Mohamed; Gastroenterology Audit and Research Network East Midlands (GARNet)
31	Palaniyappan, Naaventhan ; Gastroenterology Audit and Research Network East Midlands (GARNet)
32	Rodger , Victoria; Gastroenterology Audit and Research Network East Midlands (GARNet)
33	Sawhney, Paramvir; Gastroenterology Audit and Research Network East Midlands (GARNet)
34	Aslam, Nasar; Gastroenterology Audit and Research Network East Midlands (GARNet)
35	Okeke , Theo; Gastroenterology Audit and Research Network East Midlands (GARNet)
36	Lawson , Adam ; Gastroenterology Audit and Research Network East Midlands (GARNet)
37	Cheung, Danny; West Midlands Research in Gastroenterology (WMRIG)
38	Reid, Jeremy; West Midlands Research in Gastroenterology (WMRIG)
39	Awasthi, Ashish; West Midlands Research in Gastroenterology (WMRIG)
40	Anderson, Mark; West Midlands Research in Gastroenterology (WMRIG)
41	Timothy, Joe; West Midlands Research in Gastroenterology (WMRIG)
42	Pattni, Sanjeev ; Gastroenterology Audit and Research Network East Midlands (GARNet)
43	Ahmad, Saqib ; Gastroenterology Audit and Research Network East Midlands (GARNet)
44	Thomas, Titus; Gastroenterology Audit and Research Network East Midlands (GARNet)
45	Norman, Anthony; Gastroenterology Audit and Research Network East Midlands (GARNet)
46	
47	
48	
49	
50	
51	
52	
53	
54	
55	
56	
57	
58	
59	
60	

	Townson, Gillian; West Midlands Research in Gastroenterology (WMRIG) Shearman, Jeremy; West Midlands Research in Gastroenterology (WMRIG) Giljaca, Vanja; West Midlands Research in Gastroenterology (WMRIG) Brookes, Matthew; West Midlands Research in Gastroenterology (WMRIG) Disney, Ben; West Midlands Research in Gastroenterology (WMRIG) Guha, Neil; Gastroenterology Audit and Research Network East Midlands (GARNet) Wurm, Peter ; Gastroenterology Audit and Research Network East Midlands (GARNet) Shah, Ashit; West Midlands Research in Gastroenterology (WMRIG) Fisher, Neil; West Midlands Research in Gastroenterology (WMRIG) Ishaq, Saud; West Midlands Research in Gastroenterology (WMRIG) Major, Giles; Gastroenterology Audit and Research Network East Midlands (GARNet)
Keywords:	upper gastrointestinal bleeding, upper gastrointestinal haemorrhage, hemorrhage, time to endoscopy, quality, endoscopy
Abstract:	<p>Background: Endoscopy within 24 hours of admission (early endoscopy) is a quality standard in acute upper gastrointestinal bleeding (AUGIB). We aimed to audit time to endoscopy outcomes and identify factors affecting delayed endoscopy (>24h of admission).</p> <p>Methods: This prospective multicentre audit enrolled patients admitted with AUGIB who underwent inpatient endoscopy between Nov-Dec 2017. Analyses were performed to identify factors associated with delayed endoscopy, and to compare patient outcomes, including length of stay and mortality rates, between early and delayed endoscopy groups.</p> <p>Results: Across 348 patients from 20 centres, the median time to endoscopy was 21.2h (IQR 12.0-35.7), comprising median admission to referral and referral to endoscopy times of 8.1h (IQR 3.7-18.1) and 6.7h (IQR 3.0-23.1) respectively. Early endoscopy was achieved in 58.9%, although this varied by centre (range: 31.0% - 87.5%, $p=0.002$). On multivariable analysis, lower Glasgow-Blatchford score, delayed referral, admissions between 7am-7pm or via the Emergency Department were independent predictors of delayed endoscopy. Early endoscopy was associated with reduced length of stay (median difference 1d; $p=0.004$), but not 30-day mortality ($p=0.344$).</p> <p>Conclusions: The majority of centres did not meet national standards for time to endoscopy. Strategic initiatives involving acute care services may be necessary to improve this outcome.</p>

SCHOLARONE™
Manuscripts

Time to Endoscopy for Acute Upper Gastrointestinal Bleeding: Results from a Prospective Multicentre Trainee-Led Audit

Authors:

Keith Siau^{1,2} (keithsiau@nhs.net)
 James Hodson³ (james.hodson@uhb.nhs.uk)
 Richard Ingram⁴ (richard.ingram@nhs.net)
 Andrew Baxter⁴ (abaxter@doctors.org.uk)
 Monika M Widlak² (monikawidlak@yahoo.co.uk)
 Caroline Sharratt⁴ (carolinesharratt@doctors.org.uk)
 Graham M Baker² (graham.baker1@nhs.net),
 Tom Troth² (tom.troth@nhs.net)
 Ben Hicken² (ben.hicken@nhs.net)
 Faraz Tahir² (drfaraztahir@hotmail.com)
 Malik Magrabi² (malikmagrabi@hotmail.com)
 Nouman Yousaf² (punjan5@hotmail.com)
 Claire Grant⁴ (clairejagrants@gmail.com)
 Dennis Poon⁴ (dpoon@nhs.net)
 Hesham Khalil⁴ (dr_hesham_taher@yahoo.com)
 Hui Lin Lee⁴ (Huilin.Lee@uhl-tr.nhs.uk)
 Jonathan R White⁴ (jonathan.white@nottingham.ac.uk)
 Huey Tan⁴ (HueyTan@nhs.net)
 Syazeddy Samani⁴ (syazeddy@yahoo.com)
 Patricia Hooper⁴ (particia_hooper@hotmail.com)
 Saeed Ahmed⁴ (saeed5198@gmail.com)
 Muhammad Amin⁴ (mohammad.amin@uhl-tr.nhs.uk)
 Sara Mahgoub² (smahgoub@doctors.org.uk)
 Khayal Asghar² (khayal.asghar@nhs.net)
 Farique Leet² (farique.leet@nhs.net)
 Matthew J Harborne² (mharborne@doctors.org.uk)
 Beata Polewiczowska² (beatapol@hotmail.com)
 Sheeba Khan² (sheebz@doctors.net.uk)
 Muhammad R Anjum² (raheel.anjum@nhs.net)
 Michael McFarlane² (mmcfl1982@doctors.org.uk)
 Ella Mozdiak² (Ella.mozdiak@nhs.net)
 Lauren D O'Flynn² (l.oflynn@doctors.org.uk)
 Ilona C Blee² (ilonablee173@googlemail.com)
 Rachel M Molyneux² (rachel.molyneux1@nhs.net)
 Ashok Kurian² (ashok.kurian1@nhs.net)
 Syed N Abbas² (s.abbas1@nhs.net)
 Abdullah Abbasi² (Abdullah.abbasi@uhnm.nhs.uk),
 Aadil Karim² (dr.aadilkarim@yahoo.com)
 Asif Yasin² (asifyasin.dr@gmail.com)
 Fawad Khattak² (mohammadfawad.khattak@nhs.net)
 Josephine White² (Josephine.white3@nhs.net)
 Ruhina Ahmed² (ahmed_ruhina@yahoo.co.uk)
 James A Morgan² (james1985@doctors.org.uk)
 Lance Alleyne² (lance.alleyne1@nhs.net)
 Mohamed A Alam⁴ (aftabalam101@yahoo.com)
 Naaventhana Palaniyappan⁴ (npalaniyappan@nhs.net)
 Victoria J Rodger⁴ (victoria.rodger@nhs.net)
 Paramvir Sawhney⁴ (p.sawhney@nhs.net)
 Nasar Aslam⁴ (nasar.aslam@nhs.net)
 Theodore Okeke⁴ (t.okeke@nhs.net)
 Adam Lawson⁴ (adam.lawson2@nhs.net)
 Danny Cheung² (danny.cheung@nhs.net)
 Jeremy P Reid² (jeremy.reid@nhs.net)
 Ashish Awasthi² (ashish.awasthi@walsallhealthcare.nhs.uk)
 Mark R Anderson² (mark.anderson5@nhs.net),
 Joe R Timothy² (j.r.timothy@doctors.org.uk)
 Sanjeev Pattni⁴ (sanjeev.s.pattni@uhl-tr.nhs.uk)
 Saqib Ahmad⁴ (saqib.ahmad@nhs.net)
 Gillian Townson² (gill.townson@sath.nhs.uk)
 Jeremy Shearman² (Jeremy.Shearman@swft.nhs.uk)
 Vanja Giljaca² (vanja.giljaca@heartofengland.nhs.uk)
 Matthew J Brookes² (matthew.brookes@nhs.net)
 Ben R Disney² (Ben.Disney@uhcw.nhs.uk)
 Neil Guha⁴ (Neil.Guha@nuh.nhs.uk)
 Titus Thomas⁴ (titus.thomas@ngh.nhs.uk)
 Anthony Norman⁴ (anthony.norman@uh.nhs.uk)
 Peter Wurm⁴ (peter.wurm@uhl-tr.nhs.uk)
 Ashit Shah² (ashit.shah2@nhs.net)
 Neil C Fisher² (neil.fisher@nhs.net)
 Saud Ishaq² (sauid.ishaq@nhs.net)
 Giles Major⁴ (g.major@nhs.net)

Affiliations:

¹ Joint Advisory Group on Gastrointestinal Endoscopy, Royal College of Physicians, London, UK

² West Midlands Research in Gastroenterology Group (WMRIG) collaborative, West Midlands, UK

³ Institute of Translational Medicine, University Hospital Birmingham, Birmingham, UK

⁴ Gastroenterology Audit and Research Network East Midlands (GARNet) collaborative, East Midlands, UK

Corresponding author: Dr Keith Siau; keithsiau@nhs.net

Keywords:

Upper gastrointestinal bleeding, haemorrhage, time to endoscopy, endoscopy, quality

Competing Interests: Keith Siau is the research fellow for the Joint Advisory Group on Gastrointestinal Endoscopy

Funding: WMRIG and GARNet have been awarded a research network grant by the charity Guts UK

Authorship statement: This study was jointly performed by WMRIG and GARNet trainee collaborative networks. All authors contributed to the study and approved the manuscript.

Word Count: Abstract: 200, Manuscript: 2884

ABSTRACT

Background: Endoscopy within 24 hours of admission (early endoscopy) is a quality standard in acute upper gastrointestinal bleeding (AUGIB). We aimed to audit time to endoscopy outcomes and identify factors affecting delayed endoscopy (>24h of admission).

Methods: This prospective multicentre audit enrolled patients admitted with AUGIB who underwent inpatient endoscopy between Nov-Dec 2017. Analyses were performed to identify factors associated with delayed endoscopy, and to compare patient outcomes, including length of stay and mortality rates, between early and delayed endoscopy groups.

Results: Across 348 patients from 20 centres, the median time to endoscopy was 21.2h (IQR 12.0-35.7), comprising median admission to referral and referral to endoscopy times of 8.1h (IQR 3.7-18.1) and 6.7h (IQR 3.0-23.1) respectively. Early endoscopy was achieved in 58.9%, although this varied by centre (range: 31.0% - 87.5%, $p=0.002$). On multivariable analysis, lower Glasgow-Blatchford score, delayed referral, admissions between 7am-7pm or via the Emergency Department were independent predictors of delayed endoscopy. Early endoscopy was associated with reduced length of stay (median difference 1d; $p=0.004$), but not 30-day mortality ($p=0.344$).

Conclusions: The majority of centres did not meet national standards for time to endoscopy. Strategic initiatives involving acute care services may be necessary to improve this outcome.

KEY SUMMARY

1. Summarise the established knowledge on this subject

- International guidelines generally recommend early endoscopy within 24h in all patients admitted with acute upper gastrointestinal bleeding (AUGIB).
- Time to endoscopy (the time from admission with AUGIB to endoscopy) has been shown to be consistently suboptimal in previous UK audits.
- The factors which affect time to endoscopy, including the role of the endoscopy referral, have not previously been studied.

2. What are the significant and/or new findings of this study?

- There was significant variation in time to endoscopy following AUGIB between participating centres, with the majority failing to meet national standards.
- Different factors determine time to endoscopy, and its components of time from admission to referral, and time from referral to endoscopy.
- Strategic measures involving acute care services to expedite management and endoscopy referral are required to improve standards for time to endoscopy.

INTRODUCTION

Acute upper gastrointestinal bleeding (AUGIB) is a common medical emergency, with an annual incidence of 133/100,000,¹ corresponding to approximately one presentation every six minutes in the UK. Despite advances in endoscopy, service provision, and guidelines,²⁻⁴ mortality following AUGIB has remained high over the last two decades and currently stands at approximately 10%.⁵

Endoscopy is the primary diagnostic and therapeutic modality for AUGIB. The time to endoscopy (i.e. interval between hospital admission to endoscopy) following AUGIB has been adopted by the National Institute for Health and Clinical Excellence (NICE)², the European Society of Gastrointestinal Endoscopy (ESGE)⁴ and the Joint Advisory Group on Gastrointestinal Endoscopy (JAG)⁶ as a quality standard for both patients and endoscopy units. NICE and ESGE recommend early endoscopy (within <24h of admission) for all patients admitted with suspected AUGIB,^{2,4} whereas the JAG Global Rating Scale (GRS) stipulates that each endoscopy unit should perform early endoscopy in $\geq 75\%$ of patients with AUGIB to achieve a Level B rating,⁶ which is the minimum rating for endoscopy unit accreditation.

In line with previous UK audits, the latest national audit (NCEPOD) in 2015 reported ongoing deficits in patient care,⁷ including delayed endoscopy (time to endoscopy >24h) in 35%. Organisational factors were cited as requiring improvement in 18.5% of cases reviewed. Amongst their recommendations, NCEPOD re-emphasised the need for all patients with AUGIB to have endoscopy within 24h, and called for improved organisation and co-ordination of AUGIB services.

The organisational processes behind time to endoscopy have been poorly studied. Factors that may impact on time to endoscopy include: assessment of the patient, availability of test results, efficiency of referral pathways between clinical teams and the organisation of the patient journey. These factors inevitably vary between institutions, with areas of good practice and those needing development present in all. Single centre audits may not be comparable, limiting their value for shared learning and service improvement across the health service.

The aims of our study were to:

- 1) Audit the rates of early/delayed endoscopy and identify the proportion of centres which met the JAG standard.
- 2) Identify predictors of delayed endoscopy, which can be used to target service improvement.
- 3) Assess the impact of delayed endoscopy on patient outcomes.

METHODS

Study Design

A prospective, multi-centre audit was jointly undertaken by trainee-led gastroenterology trainee networks in the East (GARNet) and West Midlands (WMRIG) regions, covering a catchment population of approximately 10.5 million. Within each centre, patients admitted with suspected AUGIB who underwent endoscopy as inpatients between November and December 2017 were enrolled over a 30d consecutive period. Exclusion criteria comprised: inpatients who developed AUGIB after being admitted for an unrelated condition, low-risk patients referred for outpatient endoscopy, paediatric cases (age <16yrs) and bright red rectal bleeding.

Outcomes

The primary outcome studied was the time to endoscopy, defined as the time taken from first hospital presentation (to the emergency department [ED] or acute medical unit) to the start time of an endoscopy procedure. This was analysed using two approaches: i) as a binary outcome (within 24/>24h) to audit rates of delayed endoscopy, and ii) as a continuous variable, which was additionally deconstructed into: time from admission to endoscopy referral (time to referral) and time from referral to endoscopy. Admission, endoscopy referral and procedure start times were preferentially collected using timestamped electronic records. [For the endoscopy referral time, this represented the time when the electronic request was submitted.](#)

Secondary outcomes included the length of stay and rates of rebleeding within 8d of endoscopy (JAG standard). [AUGIB was defined as haematemesis, melaena, coffee ground vomiting, which was deemed to require oesophagogastroduodenoscopy. Rebleeding was defined according to the clinician's impression of recurrent or ongoing AUGIB.](#) Post-discharge readmission rates and post-endoscopy mortality rates were also assessed, using a time to event approach.

Study Covariates

A range of factors were studied in order to identify those associated with time to endoscopy. These included pre-endoscopic factors, e.g. suspicion of variceal bleeding, use of antithrombotics and

1
2
3
4
5
6 empirical nil by mouth placement; haemodynamic parameters, shock index (first recorded heart rate
7 divided by systolic blood pressure), haemodynamic instability (features of shock despite fluid
8 resuscitation), and the Glasgow-Blatchford score (GBS). Where the GBS was not recorded, this was
9 calculated using the GBS components. Endoscopic lesions, major haemorrhagic stigmata and
10 application of endotherapy were retrieved from endoscopy reports. Vital case ascertainment for
11 30d outcomes was verified using electronic case records.
12
13
14
15

16 **Conduct**

17 Each participating site involved a study team comprising:

- 18
19 a) Site project lead: responsible for liaising with the local Clinical Governance and Audit
20 department and clinical service lead as necessary, screening for eligible patients, providing
21 quality assurance and security of data collection, and presenting the results at local level.
22
23 b) Site consultant: Provides institutional oversight and responsibility, supporting the site project
24 lead(s), and contributing to discussion of results and plan for quality improvement at site-level.
25
26 c) Site project investigator(s): responsible for data collection and ensuring validity of collected
27 data
28
29
30
31
32

33 Data collection templates were disseminated to each site project lead. These maximised the utility
34 of dropdown menus and automated data validation fields. Each collected variable was annotated
35 with definitions in order to facilitate standardisation of data entries.
36
37
38

39 **Study Approval**

40 This audit was registered centrally at Nottingham University Hospital (project code: 17-267c;
41 approval date: 2/11/2017). Formal ethics approval and patient consent was not required as per
42 departmental policy and Health Research Authority (HRA) guidance. The study protocol conforms to
43 the ethical guidelines of the 1975 Declaration of Helsinki as reflected in a prior approval by the
44 institution's review board.
45
46
47
48
49

50 **Statistical Analysis**

51
52
53
54
55
56
57
58
59
60

1
2
3
4
5
6 Initially, times to endoscopy were dichotomised into those that were early (≤ 24 h) or delayed (>24 h).
7
8 Comparisons of delayed endoscopy rates were compared across centres using Chi-square test.
9
10 Univariable analyses were then performed to identify other factors associated with delayed
11 endoscopy. Categorical variables were assessed using Fisher's exact tests, whilst ordinal and
12 continuous variables were compared between patients with and without delayed endoscopy using
13 Mann-Whitney tests. A multivariable analysis was then performed in order to identify independent
14 predictors of delayed endoscopy. Prior to this analysis, Hosmer-Lemeshow tests were used to assess
15 goodness of fit of continuous variables, which were categorised into ordinal groups where poor fit
16 was detected. A multivariable binary logistic regression model was then produced, using a
17 backwards stepwise approach to variable selection.
18
19

20
21
22 The times to endoscopy were then deconstructed into the time from admission to referral and from
23 referral to endoscopy. These followed skewed distributions, and were therefore reported as
24 medians and interquartile ranges (IQRs), and analysed using a non-parametric approach.
25 Associations with ordinal or continuous variables were assessed using p-values from Spearman's rho
26 correlation coefficients, with Mann-Whitney tests used for dichotomous factors. Patient outcomes
27 were then compared between those patients with early and delayed endoscopies using a Mann-
28 Whitney test for the length of stay, Fisher's exact test for the rebleed rate, and Kaplan-Meier curves
29 with log-rank tests to assess the 30d readmission and mortality rates.
30
31
32
33
34

35 All analyses were performed using IBM SPSS 22 (IBM Corp. Armonk, NY), with $p < 0.05$ indicative of
36 statistical significance throughout.
37
38
39
40
41
42

43 **RESULTS**

44 **Patient characteristics**

45
46 A total of 348 patients were enrolled from 20 sites, with time to referral captured in 64% (N=226) of
47 patients. The cohort had a median age of 70 years (IQR: 54-81), and 61% were male. The median
48 GBS was 10 (IQR 6-13); 6 patients (1.7%) had a GBS of 0. The most common endoscopic diagnosis
49
50
51
52
53
54
55
56
57
58
59
60

1
2
3
4
5
6 was peptic ulcer (24%), with normal endoscopy in 21% (**Figure 1**). Overall, 30% of patients required
7 endotherapy.
8
9

10
11 At presentation, 20.9% of patients had a shock index >1, whilst 14.0% met criteria for
12 haemodynamic instability. The majority of patients underwent endoscopy in the endoscopy unit
13 (94.5%), with the remaining procedures performed in theatre (4.9%) and in the ED (0.6%). Patients
14 with haemodynamic instability were more likely to receive endoscopy in theatre (22.2% vs 2.2% of
15 those without haemodynamic instability, $p<0.001$).
16
17

18 19 20 **Time to endoscopy**

21
22 The median time to endoscopy was 21.2h (IQR: 12.0-35.7h), which differed significantly across
23 centres ($p<0.001$), with medians ranging from 9.2-42.5h (**Figure 2**). Delayed endoscopy occurred in
24 41.1% of patients; this varied across centres, ranging from 31.0%-87.5% ($p=0.002$). The JAG
25 standard of early endoscopy in $\geq 75\%$ of patients was achieved in 4/20 (20%) of the centres assessed.
26
27

28
29
30 The times to endoscopy were then deconstructed into the time from admission to referral and from
31 referral to endoscopy for the N=226 patients referral times were available. The median time to
32 referral was 8.1h (IQR 3.7-18.1h), without significant variation between centres ($p=0.710$), with
33 medians ranging from 1.7-18.1h. However, the time from referral to endoscopy (median 6.7h, IQR
34 3.0-23.1h) differed between centres ($p=0.007$), with medians ranging from 2.5-27.3h.
35
36
37

38 39 **Factors associated with delayed endoscopy**

40
41 Univariable analysis of factors associated with the time to endoscopy is reported in **Table 1**. Patients
42 with out-of-hours admissions (7pm-7am), suspected variceal bleeding ($p<0.001$), shock index >1
43 ($p=0.016$), haemodynamic instability ($p<0.001$), higher GBS ($p<0.001$), and those placed *nil by mouth*
44 ($p=0.001$) at index assessment were less likely to have delayed endoscopies. A significant
45 association between delayed endoscopy and the time from admission to referral was also detected
46 ($p<0.001$).
47
48

49
50 Multivariable analysis was then performed to identify independent predictors of delayed endoscopy
51 for the N=189 (54.0%) patients with data available for all factors. Goodness-of-fit testing identified
52 poor fit for time to referral as a continuous variable (Hosmer-Lemeshow test: $p=0.002$), hence, this
53
54
55
56
57
58
59
60

factor was divided into categories to ensure validity. The multivariable model (Table 3) found that patients admitted through acute medicine ($p=0.039$), between 7pm-7am ($p=0.008$) or with higher GBS ($p<0.001$) were significantly less likely to have a delayed endoscopy. After accounting for these factors, longer times to endoscopy referral ($p<0.001$) were found to be associated with higher rates of delayed endoscopy, with an odds ratio for delayed endoscopy of 2.66 and 1.44 for time-to-referral of 4-7 and 8-15 hours respectively, vs. <4 hours.

Some factors were significantly associated with delayed endoscopy on univariable analysis, but not on multivariable analysis. This may have been due to correlations with other factors in the model. For example, patients with haemodynamic instability also had significantly higher GBS (median 12 vs. 9, $p<0.001$) and significantly shorter times from admission to referral (median 3.4 vs. 9.2h, $p=0.003$) than patients without haemodynamic instability, both of which were independently predictive of delayed endoscopy. Similar trends were also observed for the shock index, being placed *nil by mouth* at the index assessment and major haemorrhagic stigmata. As a result, the GBS and time from admission to referral effectively became surrogate markers of these factors, and superseded them in the multivariable model. Thus, the univariable analyses remain informative, reflecting the full gamut of factors associated with delayed endoscopy.

Factors associated with time to endoscopy

Univariable analysis was performed on time to endoscopy as a continuous outcome (Table 3), which yielded results that were consistent with the previously described analysis of delayed endoscopy. Additionally, this analysis deconstructed the times to endoscopy relative to the endoscopy referral. Some of the factors analysed were found to have differing impacts on these two periods. Patients admitted through acute medicine ($p<0.001$), daytime admission ($p=0.037$), younger patients ($p<0.001$) and those on antithrombotic therapy ($p=0.004$) had significantly shorter times from admission to referral. However, none of these factors was associated with significant differences in the times from referral to endoscopy. Conversely, time to referral was not affected by the day of admission ($p=0.410$), but patients admitted at the weekend had significantly shorter times from referral to endoscopy than weekday admissions ($p=0.012$). There was no significant difference between weekend/weekday admission status and whether endoscopy was performed in theatre or in the endoscopy unit ($p=0.341$).

Formatted: Default, Justified, Space After: 6 pt, Line spacing: 1.5 lines

Formatted: Font: 11 pt, Font color: Black

Formatted: Font: 11 pt, Font color: Black

Formatted: Font: 11 pt, Font color: Black

Formatted: Font: 11 pt, Font color: Black

Formatted: Font: 11 pt, Border: : (No border)

Impact of delayed endoscopy on patient outcomes

Patient outcomes, stratified according to early or delayed endoscopy, are presented in **Table 4**. The overall rate of 8d rebleeding was 9.4%, which was higher in the early endoscopy cohort (12.3% vs. 5.6%, $p=0.041$). Early endoscopy was also associated with a significantly shorter length of stay, with a difference of 1d between the two groups (median: 4 vs. 5d, $p=0.004$). On Kaplan-Meier analysis, no significant difference was detected between the early and delayed endoscopy groups, with 30d mortality rates of 9.4% vs. 6.9% ($p=0.344$, **Figure 3a**) and 30d post-discharge readmission rates of 14.1% vs. 17.6%, ($p=0.453$, **Figure 3b**).

DISCUSSION

This trainee-led audit of AUGIB has identified ongoing deficits in meeting time to endoscopy quality standards in the Midlands, UK. Delayed endoscopy occurred in 41% of patients, exceeding the 35% figure reported in the last NCEPOD audit.⁷ Only 20% of units met the early endoscopy standard set by JAG. Importantly, factors affecting time to endoscopy, and its components of time to referral and time from referral to endoscopy, were identified. To our knowledge, such analyses have not previously been performed either within or outside the National Health Service (NHS). As time to referral is primarily reliant on acute departments, and referral to endoscopy determined by endoscopy departments, this allows an arbitrary delineation of systems processes affecting time to endoscopy. Our data highlight potential mismatches in service demands between acute departments and endoscopy units and provide insight into areas which may be optimised. For instance, patients admitted through acute medicine, during the daytime, younger patients, and those on antithrombotic therapy had significantly lower referral times, but did not impact on referral to endoscopy times, whereas the opposite was true for weekend admissions. Reassuringly, both time to referral and time from referral to endoscopy were significantly lower in patients with more severe presentations, i.e. higher GBS, haemodynamic instability, suspected variceal bleeding, and those with haemorrhagic stigmata on endoscopy, suggesting alignment of priorities in sicker patients for endoscopy by acute departments and endoscopy units.

1
2
3
4
5
6 Attainment of time to endoscopy targets is dependent on close integration between acute
7 departments and the endoscopy unit. Although time to endoscopy is a quality metric which
8 potentially determines the JAG accreditation status of an endoscopy unit, the time to referral is
9 largely dependent on frontline services, and may be beyond the control of the endoscopy
10 department. Patients admitted via ED waited longer before being referred compared to those
11 admitted via acute medicine. From our experience within the NHS, patients who present with
12 AUGIB to the ED are triaged and empirically managed, before being transferred to an acute medical
13 ward for ongoing care. Often, the decision to refer for endoscopy in non-life-threatening cases of
14 AUGIB is ~~traditionally~~ undertaken by the acute medical rather than the ED teams, which can incur
15 delays. While it is possible to streamline the referral pathways through AUGIB protocols, improved
16 access to the duty endoscopist, acute gastroenterologist liaison services etc., earlier endoscopy
17 referral at the ED level could be considered to reduce time to endoscopy. Nonetheless, there may
18 also be scope to optimise the referral to endoscopy window. The observation that time to
19 endoscopy was longer for daytime admissions, despite earlier referral times, could reflect difficulties
20 of endoscopy units to accommodate additional cases when operating at full capacity. This is
21 consistent with the finding of shorter referral to endoscopy times for weekend admissions, when
22 endoscopy units are typically have less planned activity.

23
24
25
26
27
28
29
30
31
32 Previous studies have assessed the impact of early endoscopy (<24h),⁸⁻¹² urgent endoscopy (6-12h)¹³⁻
33 ¹⁵ and very early endoscopy (<2-6h)^{16,17} on patient outcomes. The impact of early endoscopy on
34 mortality is conflicting; some have shown no significant difference,^{8,9} while two recent studies^{11,12}
35 reported this to be protective of mortality. Several retrospective studies have associated early
36 endoscopy with increased likelihood of haemorrhagic stigmata.^{14,17} However, this interpretation
37 may be confounded by reverse causality, as patients with severe AUGIB are likely to undergo early
38 endoscopy. Therefore, the preponderance of high risk endoscopic stigmata and rebleeding in our
39 early endoscopy group may denote such selection bias. Despite this, we did not show an association
40 between early endoscopy and mortality, but did uncover a modest but statistically significant
41 reduction in length of stay, which can benefit patient satisfaction, healthcare costs, and hospital bed
42 availability.

43
44
45
46
47
48
49 Several limitations require acknowledgement. First, referral times and 30d outcomes were not fully
50 available, which may have reduced the statistical power of our analyses. Second, as the study was
51 undertaken between November and December, where acute departments are vulnerable to 'winter
52
53
54
55
56
57
58
59
60

pressures', our data may not be representative of practice during less intense periods. Third, investigators were not physically assigned to acute departments to record the timings of specific interventions. Although electronic timestamps provide accurate records of time to endoscopy outcomes, desirable data fields to further evaluate the referral pathway, e.g. time of first decision for endoscopy or telephone discussion/referral to endoscopy team were inconsistently recorded within case records and excluded. This prevented accurate process mapping of the patient journey. Fourth, inpatients with AUGIB while hospitalised for another condition were excluded; this cohort is associated with higher mortality and may benefit from earlier endoscopy. Consequently, our time to endoscopy may be longer and rates of mortality and rebleeding lower than previous audits. Finally, our analyses were centred at patient-level. The involvement of 20 centres was insufficient to permit unit-level analysis. While it is acknowledged that there was heterogeneity in care offered, potentially confounding Parameters—parameters relevant to endoscopy units (e.g. endoscopy volume, accreditation status, access to 24h on-site endoscopy, endoscopy rotas, type of hospital, availability of dedicated inpatient lists) and acute departments (e.g. ED waiting times, referral protocols) were not studied, which should be considered for future research.

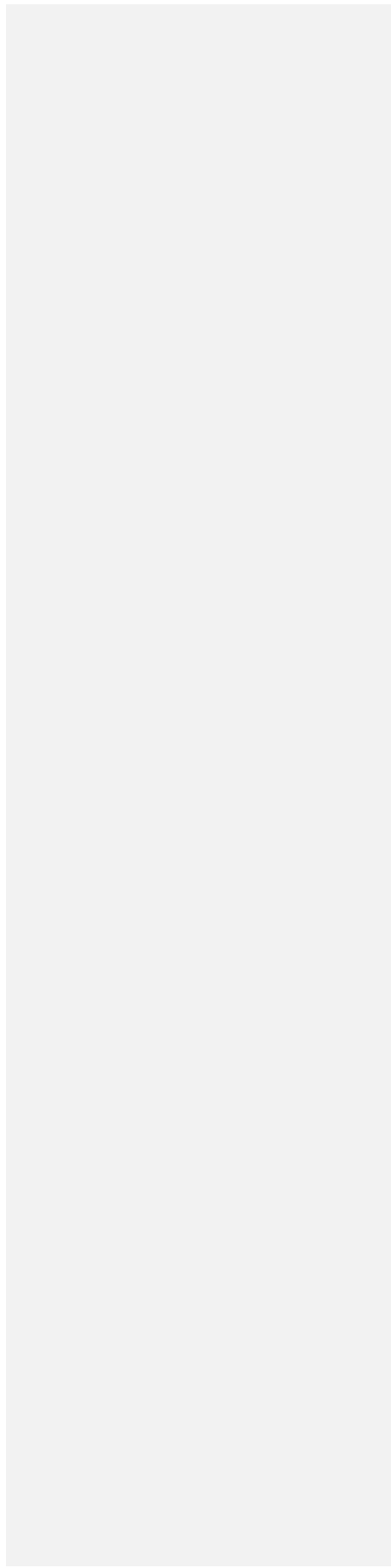
Moving forward, the BSG Endoscopy Quality Improvement Project (EQIP) comprises a series of initiatives to improve standards of care in endoscopy. Amongst these is the development of a national AUGIB quality bundle which can be implemented in acute departments to facilitate early management, risk stratification and referral, with the objective of improving time to endoscopy and patient outcomes. Such interventions may ultimately pave way for the attainment of quality standards in AUGIB.

CONCLUSION

In conclusion, the majority of centres did not meet national standards for time to endoscopy. Factors associated with delayed endoscopy included time and route of admission, severity scoring and the timing of endoscopy referral. Early endoscopy may reduce length of stay, but is dependent on prompt assessment and referral. Strategic initiatives involving acute care services are likely to be required to improve this outcome.

1
2
3
4
5
6
7
8
9
10
11
12
13
14
15
16
17
18
19
20
21
22
23
24
25
26
27
28
29
30
31
32
33
34
35
36
37
38
39
40
41
42
43
44
45
46
47
48
49
50
51
52
53
54
55
56
57
58
59
60

For Peer Review



REFERENCES

1. Button LA, Roberts SE, Evans PA, et al. Hospitalized incidence and case fatality for upper gastrointestinal bleeding from 1999 to 2007: a record linkage study. *Aliment Pharmacol Ther* 2011;33(1):64-76.
2. NICE. Acute upper gastrointestinal bleeding in over 16s: management. 2012 [cited 20th Feb 2018]; Available from: <https://www.nice.org.uk/guidance/cg141>.
3. SIGN. Management of acute upper and lower gastrointestinal bleeding. 2008 [cited 20th Feb 2018]; Available from: <http://www.sign.ac.uk/assets/sign105.pdf>.
4. Gralnek IM, Dumonceau JM, Kuipers EJ, et al. Diagnosis and management of nonvariceal upper gastrointestinal hemorrhage: European Society of Gastrointestinal Endoscopy (ESGE) Guideline. *Endoscopy* 2015;47(10):a1-46.
5. Hearnshaw SA, Logan RF, Lowe D, et al. Use of endoscopy for management of acute upper gastrointestinal bleeding in the UK: results of a nationwide audit. *Gut* 2010;59(8):1022-9.
6. Joint Advisory Group on Gastrointestinal Endoscopy. Joint Advisory Group on Gastrointestinal Endoscopy (JAG) Global Rating Scale (GRS): Version for acute services (all nations) - April 2016, 2016:10.
7. NCEPOD. Time to Get Control? A review of the care received by patients who had a severe gastrointestinal haemorrhage. 2015; Available from: <http://www.ncepod.org.uk/2015report1/downloads/TimeToGetControlFullReport.pdf>.
8. Lanas A, Aabakken L, Fonseca J, et al. Variability in the management of nonvariceal upper gastrointestinal bleeding in Europe: an observational study. *Adv Ther* 2012;29(12):1026-36.
9. Spiegel BM, Vakil NB, Ofman JJ. Endoscopy for acute nonvariceal upper gastrointestinal tract hemorrhage: is sooner better? A systematic review. *Arch Intern Med* 2001;161(11):1393-404.
10. Lim LG, Ho KY, Chan YH, et al. Urgent endoscopy is associated with lower mortality in high-risk but not low-risk nonvariceal upper gastrointestinal bleeding. *Endoscopy* 2011;43(4):300-6.
11. Garg SK, Anugwom C, Campbell J, et al. Early esophagogastroduodenoscopy is associated with better Outcomes in upper gastrointestinal bleeding: a nationwide study. *Endosc Int Open* 2017;5(5):E376-e86.
12. Jeong N, Kim KS, Jung YS, et al. Delayed endoscopy is associated with increased mortality in upper gastrointestinal hemorrhage. *Am J Emerg Med* 2018 Published Online First: 2018/06/01. doi: 10.1016/j.ajem.2018.05.049.
13. Lin HJ, Wang K, Perng CL, et al. Early or delayed endoscopy for patients with peptic ulcer bleeding. A prospective randomized study. *J Clin Gastroenterol* 1996;22(4):267-71.
14. Bjorkman DJ, Zaman A, Fennerty MB, et al. Urgent vs. elective endoscopy for acute non-variceal upper-GI bleeding: an effectiveness study. *Gastrointest Endosc* 2004;60(1):1-8.
15. Targownik LE, Murthy S, Keyvani L, et al. The role of rapid endoscopy for high-risk patients with acute nonvariceal upper gastrointestinal bleeding. *Can J Gastroenterol* 2007;21(7):425-9.
16. Lee JG, Turnipseed S, Romano PS, et al. Endoscopy-based triage significantly reduces hospitalization rates and costs of treating upper GI bleeding: a randomized controlled trial. *Gastrointest Endosc* 1999;50(6):755-61.

- 1
- 2
- 3
- 4
- 5
- 6
- 7 17. Schacher GM, Lesbros-Pantoflickova D, Ortner MA, et al. Is early endoscopy in the emergency room
- 8 beneficial in patients with bleeding peptic ulcer? A "fortuitously controlled" study. *Endoscopy*
- 9 2005;37(4):324-8.
- 10
- 11
- 12
- 13
- 14
- 15
- 16
- 17
- 18
- 19
- 20
- 21
- 22
- 23
- 24
- 25
- 26
- 27
- 28
- 29
- 30
- 31
- 32
- 33
- 34
- 35
- 36
- 37
- 38
- 39
- 40
- 41
- 42
- 43
- 44
- 45
- 46
- 47
- 48
- 49
- 50
- 51
- 52
- 53
- 54
- 55
- 56
- 57
- 58
- 59
- 60

For Peer Review

TABLES

	N	Delayed Endoscopy*	p-Value
Age (Years)	348		0.728***
< 55	92	39 (42.4%)	
55 - 69	82	31 (37.8%)	
70 - 79	73	31 (42.5%)	
80+	101	42 (41.6%)	
Gender	348		0.057
Male	214	79 (36.9%)	
Female	134	64 (47.8%)	
Referral source	348		0.213
Acute Medicine	49	16 (32.7%)	
Emergency Department	299	127 (42.5%)	
Arrival Day	348		0.368
Weekday	267	106 (39.7%)	
Weekend	81	37 (45.7%)	
Arrival Time	348		<0.001
Day	234	113 (48.3%)	
Night (7pm - 7am)	114	30 (26.3%)	
Suspected Variceal Bleed	347		0.019
No	280	124 (44.3%)	
Yes	67	19 (28.4%)	
Antithrombotic Therapy at Arrival	348		0.429
No	221	87 (39.4%)	
Yes	127	56 (44.1%)	
Haemodynamically Instability	319		<0.001
No	275	122 (44.4%)	
Yes	44	6 (13.6%)	
Shock Index	347		0.016
≤1	274	122 (44.5%)	
>1	73	21 (28.8%)	
Major Haemorrhagic Stigmata on Endoscopy	343		<0.001
No	235	116 (49.4%)	
Yes	108	26 (24.1%)	
GBS	346		<0.001***
0-6	103	57 (55.3%)	
7-12	148	64 (43.2%)	
13+	95	22 (32.2%)	
NBM (< 1 Hour**)	312		0.001
No	191	89 (46.6%)	
Yes	121	34 (28.1%)	
Admission to Referral (Hours)	226		<0.001***
< 4	63	12 (19.0%)	
4 - 7	49	21 (42.9%)	
8 - 15	44	11 (25.0%)	
16+	70	50 (71.4%)	

Table 1: Univariable analysis of predictors of delayed endoscopy. Data are reported as N (%), with p-values from Fisher's exact tests, unless stated otherwise. Bold p-values are significant at $p < 0.05$. *Endoscopy >24 hours after arrival. **At index assessment, within one hour of arrival. ***p-Value from a Mann-Whitney test, comparing the continuous variable between patients with and without delayed endoscopy.

	Odds Ratio (95% CI)	p-Value
Referral Source (Emergency Department)	3.11 (1.06 - 9.13)	0.039
Arrival Day (Weekend)	0.38 (0.14 - 1.04)	0.059
Arrival Time (7pm - 7am)	0.33 (0.15 - 0.75)	0.008
GBS (per Unit Increase)	0.86 (0.79 - 0.94)	<0.001
NBM (< 1 Hour*)	0.48 (0.22 - 1.06)	0.071
Admission to Referral (Hours)		<0.001
< 4	-	-
4 - 7	2.66 (0.89 - 7.92)	0.079
8 - 15	1.44 (0.42 - 4.98)	0.563
16+	10.20 (3.65 - 28.53)	<0.001

Table 2: Multivariable analysis of delayed endoscopy. Results are from a binary logistic regression model, with delayed endoscopy (>24 hours from admission) as the dependent variable. Variables were selected using a backwards stepwise approach, and all factors in **Table 1** were considered for inclusion. The final model is based on N=189, after excluding cases with missing data. *Within one hour of arrival.

	Median (IQR) time in Hours from:		
	Admission to Referral (N=226)	Referral to Endoscopy (N=226)	Admission to Endoscopy (N=348)
Age (Years)	p<0.001*	p=0.539*	p=0.069*
< 55	5.7 (2.9 - 12.0)	9.7 (3.8 - 20.2)	20.5 (10.5 - 33.6)
55 - 69	6.7 (3.2 - 14.6)	5.9 (2.6 - 19.9)	19.2 (9.2 - 28.9)
70 - 79	10.1 (3.9 - 18.6)	6.4 (3.2 - 25.2)	21.9 (11.0 - 44.0)
80+	14.4 (5.7 - 21.0)	6.6 (3.6 - 23.4)	22.5 (14.5 - 42.5)
Gender	p=0.807	p=0.568	p=0.072
Male	7.9 (3.6 - 18.0)	6.8 (3.2 - 22.0)	20.3 (11.5 - 31.8)
Female	9.5 (3.7 - 18.2)	6.6 (3.0 - 23.6)	23.2 (14.3 - 43.4)
Region	p=0.217	p=0.124	p=0.493
EM	10.8 (3.7 - 18.8)	6.1 (2.9 - 21.0)	22.0 (15.0 - 32.3)
WM	7.4 (3.7 - 15.6)	9.7 (3.2 - 26.2)	21.0 (11.3 - 38.8)
Admission	p<0.001	p=0.535	p=0.619
Acute Medicine	3.7 (2.2 - 6.9)	16.8 (3.7 - 22.7)	21.6 (8.2 - 25.8)
Emergency Department	10.3 (4.4 - 18.3)	6.2 (2.9 - 23.2)	21.1 (12.0 - 38.3)
Arrival Day	p=0.410	p=0.012	p=0.770
Weekday	8.1 (3.6 - 17.0)	8.3 (3.7 - 25.2)	21.5 (11.9 - 33.2)
Weekend	8.7 (3.9 - 21.9)	4.3 (2.3 - 19.2)	21.1 (12.0 - 44.3)
Arrival Time	p=0.037	p=0.115	p=0.029
Day	6.5 (3.2 - 18.6)	12.8 (3.2 - 23.6)	23.6 (9.2 - 43.7)
Night (7pm - 7am)	11.7 (7.1 - 16.3)	4.7 (2.8 - 15.0)	16.2 (12.6 - 32.3)
Variceal Bleeding Suspected	p=0.032	p=0.009	p=0.001
No	9.3 (3.7 - 19.2)	8.2 (3.7 - 24.5)	22.3 (13.0 - 41.9)
Yes	7.6 (2.3 - 11.9)	3.9 (2.6 - 16.4)	16.1 (7.1 - 27.0)
Antithrombotic Therapy at Arrival	p=0.004	p=0.314	p=0.343
No	7.1 (3.4 - 15.9)	6.8 (2.8 - 19.9)	20.9 (11.7 - 32.3)
Yes	11.9 (5.0 - 19.9)	6.3 (3.6 - 25.4)	22.3 (13.3 - 42.3)
Haemodynamically Unstable	p=0.003	p=0.020	p<0.001
No	9.2 (3.9 - 18.6)	6.9 (3.1 - 23.4)	22.3 (13.0 - 38.8)
Yes	3.4 (1.5 - 10.2)	3.9 (2.4 - 10.8)	11.5 (5.8 - 17.6)
Shock Index	p=0.003	p=0.205	p=0.003
≤1	10.0 (4.0 - 19.6)	7.1 (3.2 - 23.5)	22.3 (13.3 - 42.3)
>1	5.4 (2.7 - 12.0)	4.4 (2.7 - 19.9)	16.5 (8.5 - 26.0)
GBS	p=0.012*	p<0.001*	p<0.001*
0-6	11.7 (4.3 - 21.6)	17.5 (4.3 - 28.8)	26.4 (16.5 - 52.6)
7-12	9.4 (3.9 - 18.0)	6.5 (2.9 - 23.4)	21.6 (12.5 - 40.7)
13+	6.3 (2.8 - 14.4)	4.1 (2.6 - 16.6)	16.1 (7.9 - 23.9)
Major Haemorrhagic Stigmata on Endoscopy	p=0.006	p<0.001	p<0.001
No	10.1 (4.1 - 19.2)	14.2 (3.8 - 26.2)	24.0 (16.3 - 47.9)
Yes	7.4 (2.2 - 12.0)	4.0 (2.5 - 7.4)	13.5 (7.0 - 22.9)
NBM (< 1 Hour**)	p<0.001	p=0.015	p<0.001
No	11.6 (5.0 - 21.6)	8.3 (3.7 - 24.5)	22.9 (15.1 - 45.2)
Yes	5.4 (2.7 - 14.1)	4.3 (2.6 - 17.7)	15.4 (7.2 - 25.4)
Location of Endoscopy***	p=0.122	p=0.010	p<0.001
Endoscopy Unit	8.4 (3.7 - 18.1)	6.9 (3.0 - 23.3)	21.7 (12.6 - 38.3)
Theatres	4.8 (1.6 - 8.4)	2.8 (1.6 - 4.1)	9.8 (4.3 - 16.6)

Table 3: Univariable analysis of predictors of patient flow. *p*-values are from Mann-Whitney tests, unless stated otherwise, and bold *p*-values are significant at *p*<0.05. **p*-Value from Spearman's rho, using the continuous version of the factor. **Within one hour of arrival.

Outcome	Time to Endoscopy		p-Value
	Early (0-24 hours)	Delayed (>24 hours)	
Rebleed within 8 Days of Endoscopy	25 (12.3%)	8 (5.6%)	0.041
Readmissions within 30 Days of Discharge	20 (14.1%)	17 (17.6%)	0.453
Deaths within 30 Days of Endoscopy	16 (9.4%)	7 (6.9%)	0.344
Length of Stay (Days)	4 (2-7)	5 (4-8)	0.004

Table 4: Outcomes of early and delayed endoscopy groups. Length of stay is reported as median (IQR), with p-value from a Mann-Whitney test. Rebleeding is reported as N (%), with p-value from Fisher's exact test. Readmission/mortality are reported as N (Kaplan-Meier estimate), with p-values from log-rank tests. Analyses of length of stay and post-discharge readmissions are based on N=330, after excluding N=10 inpatient deaths and N=8 patients where discharge dates were unavailable. Bold p-values are significant at $p < 0.05$.

1
2
3
4
5
6
7
8
9
10
11
12
13
14
15
16
17
18
19
20
21
22
23
24
25
26
27
28
29
30
31
32
33
34
35
36
37
38
39
40
41
42
43
44
45
46
47
48
49
50
51
52
53
54
55
56
57
58
59
60

FIGURES

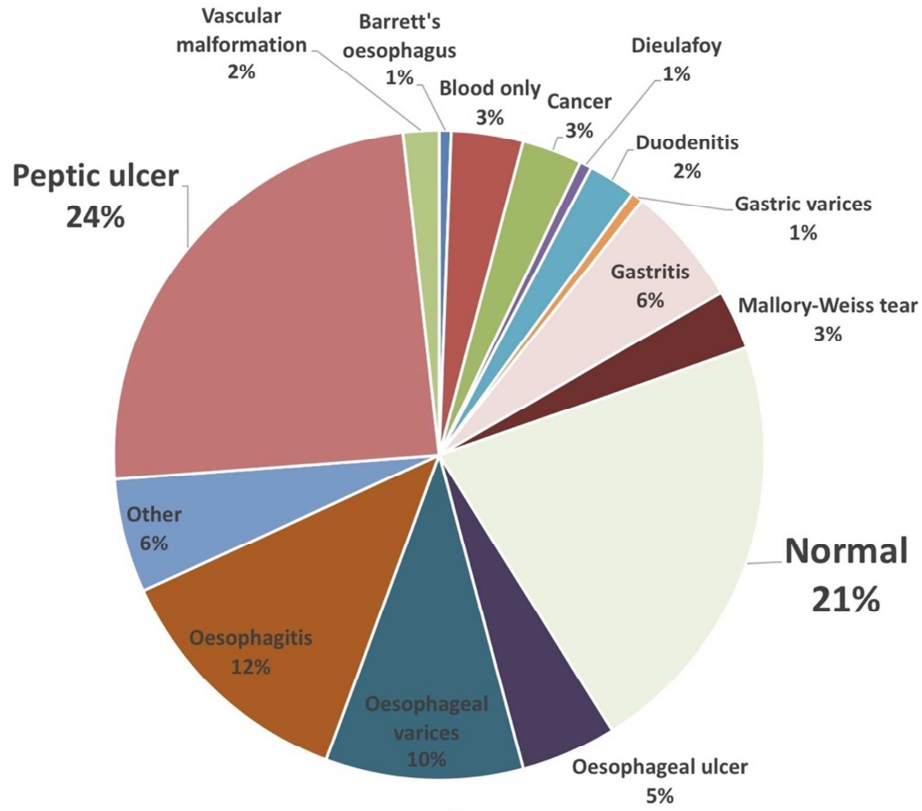


Figure 1: Endoscopic diagnoses.

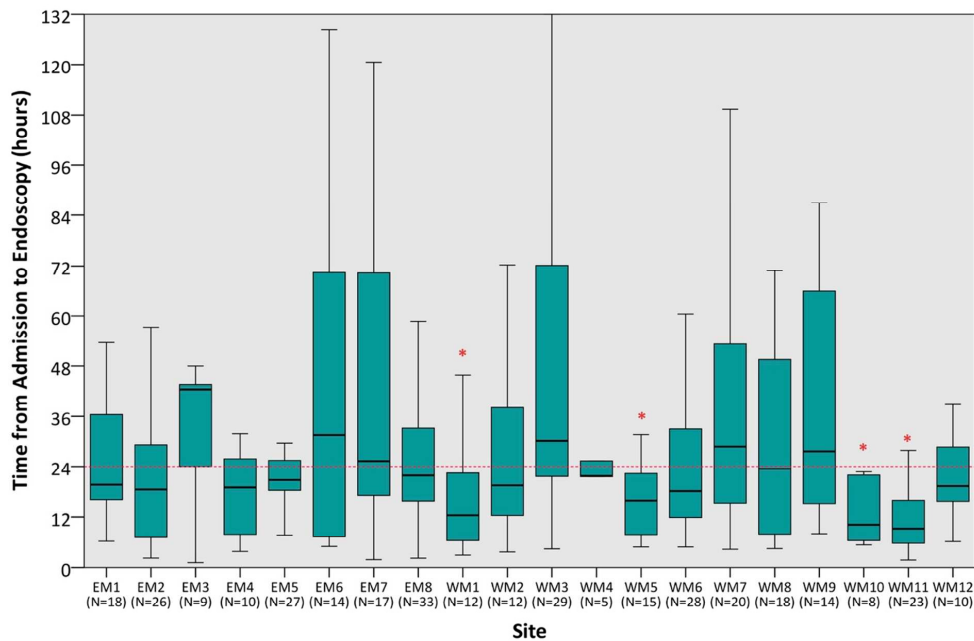


Figure 2: Time to endoscopy (h) for each participating centre. *Denotes centres achieving the JAG standard of early endoscopy in 75%+ of patients.

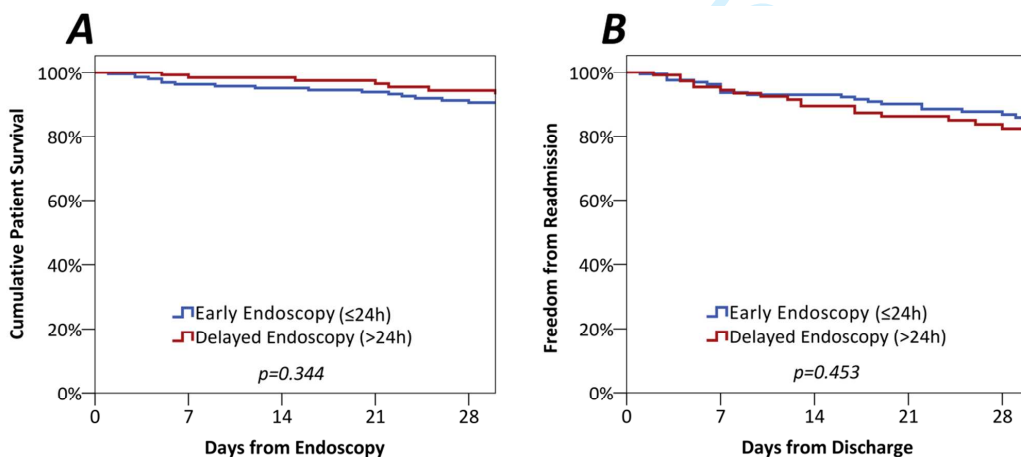


Figure 3: Kaplan-Meier plots illustrating rates of 30d survival (Figure 3A) and readmission (Figure 3B), stratified by time to endoscopy.