

SUPPLEMENTARY MATERIALS

Supplementary Discussion

For the phase 2 test batch, all outcome parameters increased significantly between the before-and-after training evaluations of the test batch, but the scores in the second evaluation were lower than for training batch 4 (Table 4). This seems most likely due to a greater difficulty of the test batch videos compared to those in the training batches, as unfortunately, we did not include the training batch in the balancing of the mix of difficulty that was used to assign videos to the 4 training batches. A greater difficulty of the test batch compared to the training batches is also supported by all scores being higher in training batch 1 than in the first evaluation of the test batch, at a stage when no feedback had been given. . This explanation is also supported by the lower relative delineation scores obtained in phase 1 for the 5 videos used in the test batch compared to the 20 videos in the phase 2 training batches.

Supplementary figures

Figure 4. Median scores of all outcome parameters for different levels of endoscopic expertise in phase 1. The grey lines show the scoring for each assessor, the solid blue lines represent median scoring for each outcome over different batches. The black dotted lines show the 25th and 75th percentile scoring for each outcome over different batches.

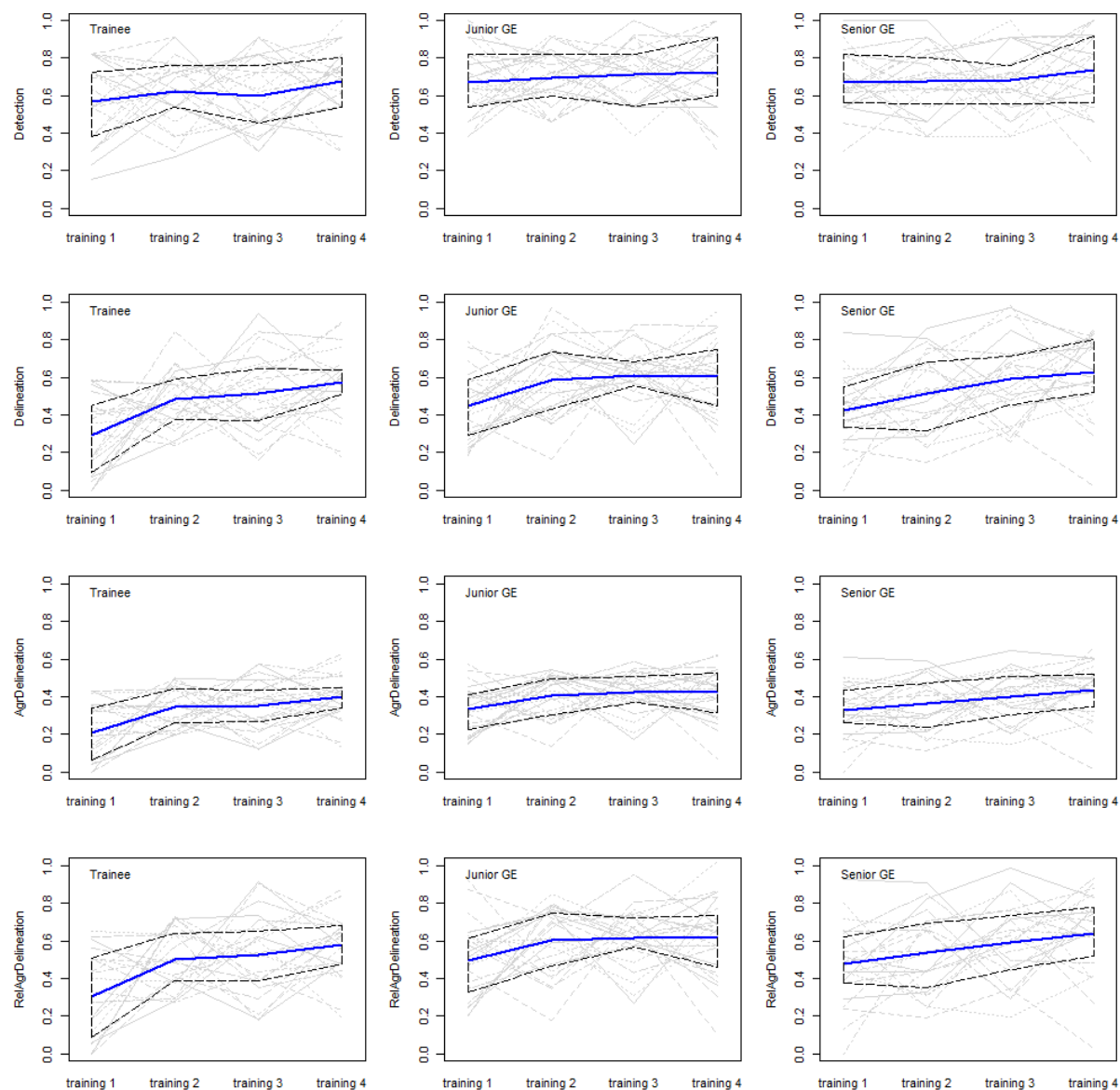
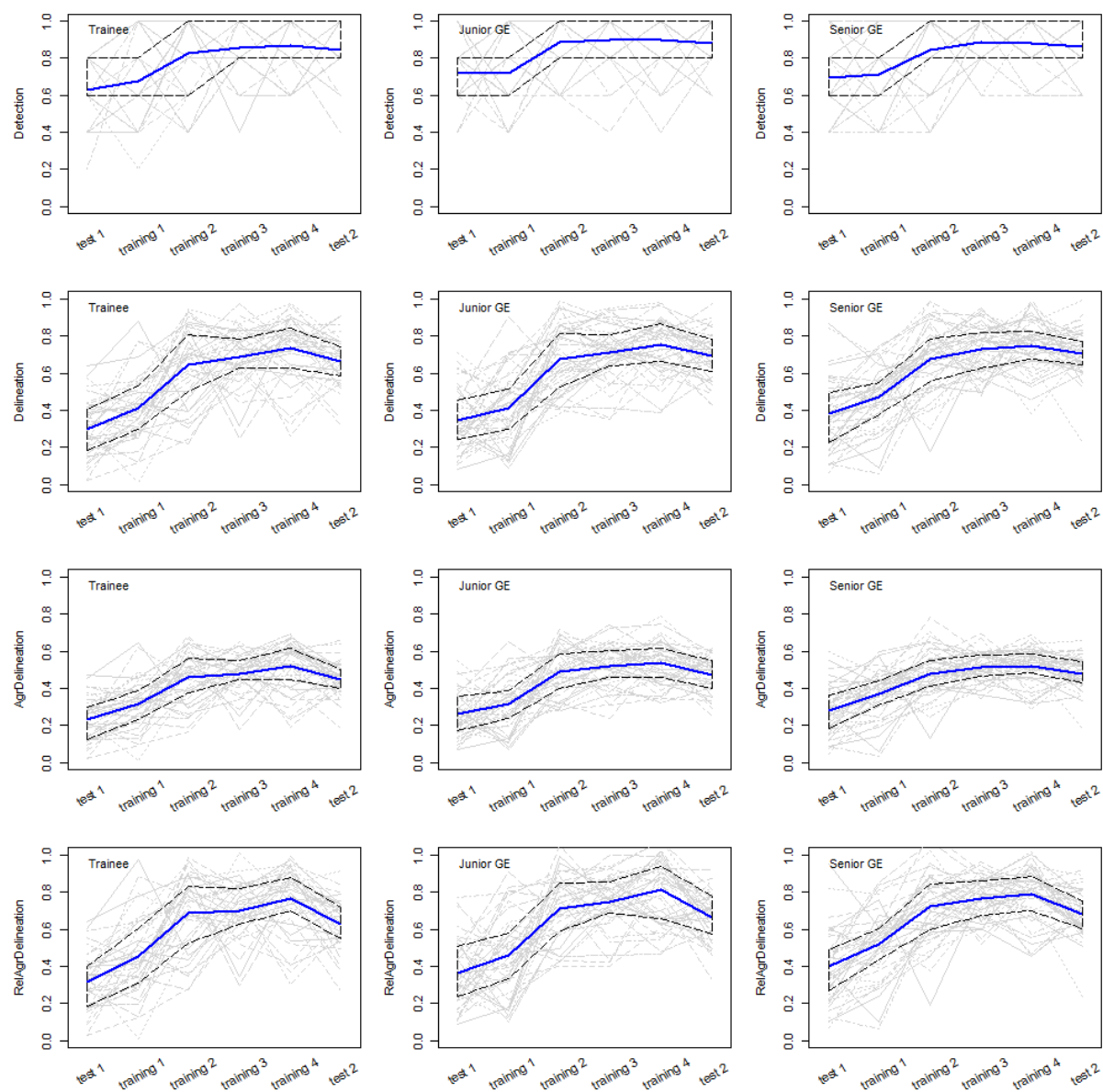


Figure 5. Median scores of all outcome parameters for different levels of endoscopic expertise in phase 2.
The grey lines show the scoring for each assessor, the solid blue lines represent median scoring for each outcome over different batches. The black dotted lines show the 25th and 75th percentile scoring for each outcome over different batches.



Sponsor recognition

The authors are very grateful for the support of this project provided by unrestricted grants from AstraZeneca and Medtronic, and by an educational activity grant from the United European Gastroenterology (UEG).

Assessor recognition

The authors thank the 189 volunteer general endoscopist assessors listed below for their outstanding commitment in generating the efficacy data of the draft and final condensed training modules.

List of assessors

R. Adang	S. Faiss	R. Mallant-Hent	P. Thota
H. Aktas	W. Fateen	T. Maniere	R. Tiwari
H. Albrecht	C. Federle	J. Mannath	N. Tofteland
Y. Alderlieste	H. Flink	N. Manner	G. Tontini
R. Anaparthi	N. Forbes	W. Mares	D. van Asseldonk
Y. Ang	P. Friederich	W. Marsman	P. van de Meeberg
M. Anten	S. Gaddam	A. Meining	F. van Delft
M. Aquarius	J. Geesing	C. Menard	M. van den Broek
R. Armstrong	M. Gerber	V. Meves	B. van den Elzen
P. Babu	T. Gohel	I. Mohammed	S. van den Hazel
A. Bagewadi	M. Gorter	E. Molloy	L. van der Waaij
M. Bajbouj	G. Grammatikos	L. Moons	E. van der Zanden
S. Balkema	M. Grasman	S. Murugesan	B. van Eijck
M. Banks	S. Gross	W. Nagengast	A. van Hattem
A. Bansal	M. Gupta	C. Nash	M. van Milligen de Wit
S. Beg	H. Gupta	M. Nayar	I. van Munster
P. Belletrutti	A. Hann	H. Neumann	E. van Soest
H. Bernard	Y. Hazewinkel	G. Nibourg	S. Venkatachalapathy
S. Bharadwaj	M. Hendrickse	D. Nylander	P. Vennalaganti
R. Bisschops	M. Hirdes	P. Oppong	R. Verbeek
T. Bisseling	A. Hoffman	G. Ou	R. Verdonk
P. Boeckel van	L. Hookey	K. Peiffer	M. Vlug
K. Boparai	A. Hopper	F. Peters	R. Voermans
M. Borgaonkar	S. Hornoff	C. Peters	S. von Delius
S. Bouchard	I. Huibregtse	J. Peveling-Oberhag	A. Voorburg
M. Brands	G. Hundorfean	L. Poen	X. Vos
R. Breumelhof	M. Jackson	T. Rai	A. Vrieze
M. Brink	H. Jhun	J. Ramesh	A. Waldthaler
J. Brown	V. Kanakadandi	V. Rempel	K. Weigand
S. Budihal	J. Keller	W. Reuss	P. Weijenborg
J. Campbell	B. Kessing	J. Rey	M. Welker
S. Carpentier	T. Khan	W. Rohof	B. Wendl
A. Choudhary	A. Khanna	A. Ross	C. Wientjes
A. Cole	N. Kim	S. Saligram	E. Wilkes
E. Corti-Hoekstra	A. Koch	J. Samarasena	P. Yachimski
C. Crooks	S. Kollmann-Jehle	D. Sanders	B. Yan
S. de Boer	V. Konda	J. Schembri	E. Zizer
J. de Bruijne	E. Kouw	E. Schenk	A. Zonneveld
G. De Bruin	T. Krolzig	O. Schroeder	S. Zweers
J. de Caestecker	S. Kuiken	T. Seerden	
T. de Wijkerslooth	T. Kuiper	M. Sey	
E. Désilets	T. Lam	P. Sinh	
A. Dhar	C. Lam	A. Sreedharan	
J. Dieren	C. Lange	C. Stallwood	
C. Dierkes	K. Lau	A. Stanley	
S. Din	M. Ledeboer	A. Tan	
M. Drenth	C. Leggett	F. ter Borg	
M. Duijvestein	A. Loualidi	P. Thiagarajan	
R. Enns	N. Mahmmod	W. Thijs	
E. Eshuis	P. Malik	S. Thomas	