



ELSEVIER

Contents lists available at ScienceDirect

## International Journal of Pharmaceutics: X

journal homepage: [www.journals.elsevier.com/international-journal-of-pharmaceutics-x](http://www.journals.elsevier.com/international-journal-of-pharmaceutics-x)

## Corrigendum

Corrigendum to 'LC-MS metabolomics comparisons of cancer cell and macrophage responses to methotrexate and polymer-encapsulated methotrexate' [International Journal of Pharmaceutics: X Volume 1 (2019) 100036]

Mohammad Ahmad Al-Natour<sup>a,b</sup>, Ali Alazzo<sup>a,c</sup>, Amir M. Ghaemmaghami<sup>d</sup>, Dong-Hyun Kim<sup>a</sup>, Cameron Alexander<sup>a,\*</sup>

<sup>a</sup> School of Pharmacy, University of Nottingham, University Park, Nottingham NG72RD, UK

<sup>b</sup> Department of Pharmacy, Faculty of Pharmacy & Medical Sciences, University of Petra, Amman, Jordan

<sup>c</sup> College of Pharmacy, University of Mosul, Mosul, Iraq

<sup>d</sup> School of Life Sciences, University of Nottingham, University Park, Nottingham NG72RD, UK

The authors regret that the original version of Fig. 3 incorrect. The updated figure is below for reference.

DOI of original article: <https://doi.org/10.1016/j.ijpx.2019.100036>

\* Corresponding author at: School of Pharmacy, University of Nottingham, University Park, Nottingham NG72RD, UK.

E-mail address: [cameron.alexander@nottingham.ac.uk](mailto:cameron.alexander@nottingham.ac.uk) (C. Alexander).

<https://doi.org/10.1016/j.ijpx.2020.100044>

2590-1567/ © 2020 The Author(s). Published by Elsevier B.V. All rights reserved.

Please cite this article as: Mohammad Ahmad Al-Natour, et al., International Journal of Pharmaceutics: X, <https://doi.org/10.1016/j.ijpx.2020.100044>

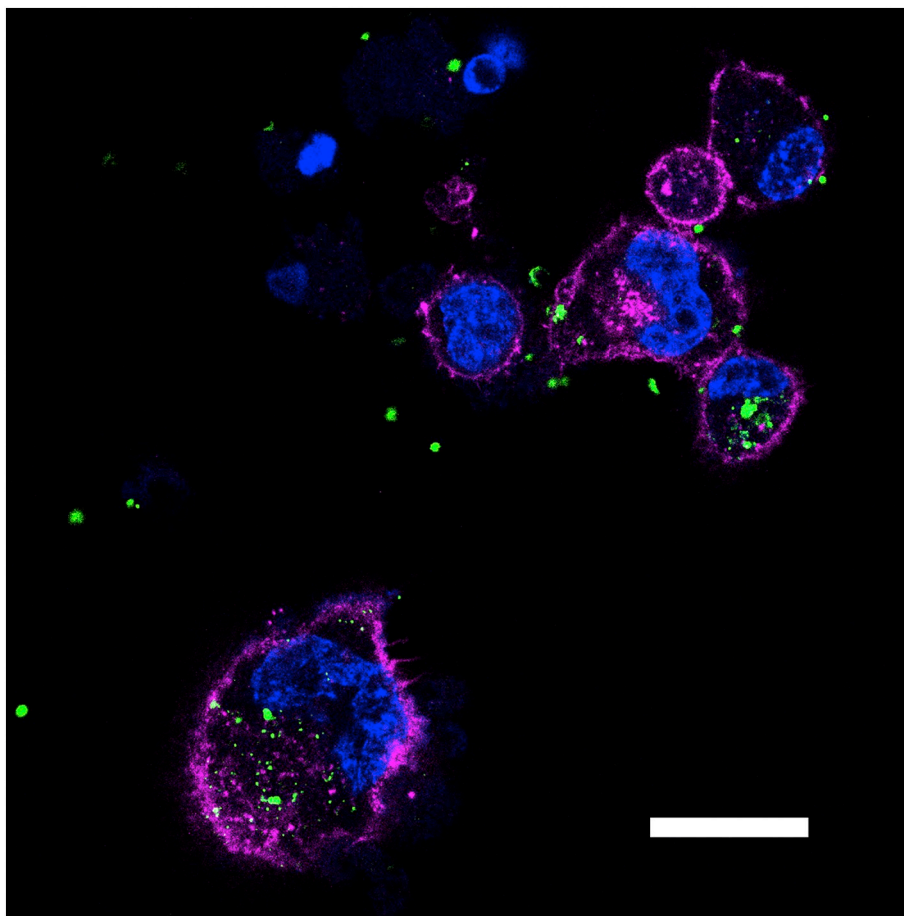


Fig. 3 Super-resolution microscopy image of methotrexate loaded PLGA nanoparticles (green) ( $92 \mu\text{g}/\text{mL}$ , 3 h) in THP-1 derived macrophages. Cells were fixed and stained for cytoskeleton (Alexafluor 647, magenta) and nucleus (Hoechst nucleus, blue). Scale bar =  $20 \mu\text{m}$ . (For interpretation of the references to colour in this figure legend, the reader is referred to the web version of this article.)

The authors would like to apologise for any inconvenience caused.