

Copro-antigen capture ELISA for the detection of *Teladorsagia (Ostertagia) circumcincta* in sheep: improvement of specificity by heat treatment

D. A. JOHNSON¹, J. M. BEHNKE^{1*} and G. C. COLES²

¹ School of Biology, University of Nottingham, University Park, Nottingham NG7 2RD, UK

² Department of Clinical Veterinary Science, University of Bristol, Langford House, Bristol BS40 5DU, UK

(Received 25 September 2003; revised 23 December 2003; accepted 7 January 2004)

SUMMARY

A copro-antigen capture ELISA for the detection of *Teladorsagia circumcincta* infection in sheep was developed and evaluated. Experiments with faeces from worm-free sheep, that had been spiked with known concentrations of excretory–secretory (E–S) antigen indicated that a positive signal was generated with 180 ng of E–S/ml. A nested design, based on 8 infected and 8 worm-free sheep, was employed to assess the stages during sample preparation contributing to variation in signal from the assay. This showed that 87% of the variance in the optical density readings (ODs) was directly explained by infection status. Variation between individual sheep within infection groups, and between samples at various stages in the assay, collectively accounted for the remaining variance. Initial evaluation of specificity using faeces from animals carrying a range of monospecific infections indicated cross-reactivity with *Haemonchus contortus* and *Nematodirus spathiger*. However, by treating the supernatant from faeces for 20 min at 100 °C, the cross-reactive signal was eliminated whilst the specific signal was largely preserved. Heat treatment of faeces from 12 non-infected sheep, 12 sheep with *T. circumcincta* and 6 with *H. contortus* resulted in sensitivity being increased from 66.7 to 85.7%, and specificity from 62.5 to 87.5%. OD values showed a significant positive relationship with adult worm burdens, although at low infection intensities there was some overlap between infected and worm-free animals. We discuss the application of CC-ELISAs in facilitating selective chemotherapy of sheep, as a means of avoiding the development of anthelmintic resistance in pastoral regions where sheep are farmed on a large scale.

Key words: copro-antigen ELISA, *Teladorsagia (Ostertagia) circumcincta*, sheep, nematode, excretory–secretory (E–S) products, antibodies.

INTRODUCTION

With the increasing spread of anthelmintic resistance among the gastro-intestinal (GI) nematodes of domestic animals (Waller, 1993; Waller *et al.* 1995; Hennessy, 1997), particularly multiple resistance (Jackson, Jackson & Coop, 1992), and the increasing consumer demand for reduced levels of drug residues in food and the environment (Stear & Murray, 1994), new approaches to control are urgently required. The traditional, and most widely implemented, control measure for GI nematodes is mass chemotherapy at regular times throughout the year, a treatment regimen that encourages the development of anthelmintic resistance (Waller, 1986; Coles, 1995; Condor & Campbell, 1995; Jackson & Coop, 2000). One approach that might reduce the onset and spread of resistance would be to replace mass chemotherapy with selective chemotherapy, focussing treatment only on those animals that require drenching because

of worm burdens that threaten production traits if left untreated (Smith, 1990). However, accurate detection of infection, particularly in animals carrying subclinical infections, is essential if selective chemotherapy is to be rationally implemented. For the most part, diagnosis of infection with GI nematodes is still dependent on relatively expensive monitoring of faecal egg counts (FEC) by microscopy, with the ensuing disadvantages that the methods are laborious, time consuming, unreliable, incapable of detecting pre-patent infections and dependent on skilled microscopists (Nicholls & Obendorf, 1994; Johnson, 1999; Rodriguez-Canul *et al.* 1999). Although a kit for use by farmers is available and has been promoted in New Zealand and elsewhere, FEC are still not practical for individual livestock owners and in practice are largely based in reference laboratories run by national or private agricultural advisory organizations (e.g. DEFRA, formerly MAFF in the UK).

Automated detection of GI worm infections, and particularly the distinction between animals not infected or carrying low intensity parasite burdens and those with heavy infections, would allow focused treatment with anthelmintics. It is the latter group,

* Corresponding author: School of Biology, University of Nottingham, University Park, Nottingham NG7 2RD. Tel: +44 (0) 115 951 3208. Fax: +44 (0) 115 951 3251. E-mail: jerzy.behnke@nottingham.ac.uk

animals carrying the heaviest infections, that poses most concern to farmers and merits priority in treatment. However, this approach can only be economically viable in regions of the world where sheep farming is profitable and only if cheap and rapid assays for GI nematode infections were to be available. In principle, copro-antigen capture enzyme-linked immunoabsorbent assays (CC-ELISA; Green, 1986) can provide the necessary means to facilitate targeted anthelmintic treatment. These assays are useful diagnostic tools because they reflect current intestinal infection with adult worms (Allan *et al.* 1992; Deplazes *et al.* 1992) and moreover they are fast, sensitive and relatively easy to use, eliminating the need for veterinary assistance and trained microscopists (Johnson *et al.* 1994). CC-ELISAs have been very successful commercially in detecting protozoan infections (Green, Warhurst & Miles, 1985; Baumann & Gottstein, 1987; Jelenik *et al.* 1996) and have been shown to be feasible for the detection of helminth, notably cestode, infections (Allan *et al.* 1996, 1992). Moreover, they have been adapted recently for the detection of GI nematodes in both laboratory model systems (Nageswaren, Craig & Devaney, 1994; Johnson, Behnke & Coles, 1995) and in domestic animals (Ellis *et al.* 1993; Roepstorff, 1998; Agneessens, Claerebout & Vercruysse, 2001).

In our earlier paper we demonstrated the feasibility of a CC-ELISA for GI nematodes with the model system *Heligmosomoides polygyrus* in mice (Johnson *et al.* 1995). Johnson (1994) and Johnson *et al.* (1999) presented preliminary results indicating that an assay for *Teladorsagia circumcincta*, quantitatively the most important GI nematode of sheep in the UK and in northern pastoral regions of the world (Urquhart *et al.* 1987), was also feasible. Since then an assay for the related species *Ostertagia ostertagi* in cattle has been published (Agneessens *et al.* 2001). In this paper we evaluate a CC-ELISA for the detection of *T. circumcincta*, our main objective being to confirm proof of principle and to establish that such an assay for *T. circumcincta* is feasible and scientifically valid. When our initial efforts were frustrated by cross-reactivity with other common ovine GI nematodes, we developed a novel heat-based treatment that almost completely eliminated the cross-reactivity whilst largely preserving the strength of the specific signal and in particular the signal to noise ratio.

MATERIALS AND METHODS

Isolation and recovery of adult Teladorsagia circumcincta

The abomasum was isolated from freshly slaughtered sheep, cut longitudinally, and washed in Hanks' Balanced Salt Solution (HBSS). Worms were recovered from the abomasum by a modification of

the Baermann technique based on placing the abomasum on a 300 μm sieve and incubation in HBSS at 37 °C to facilitate isolation of worms. Worms were washed 5 times in sterile 0.1 M phosphate-buffered saline (PBS), pH 7.4, containing 1% (w/v) glucose, 500 IU/ml penicillin and 5 mg/ml streptomycin, in preparation for *in vitro* culture.

In experiments where the total worm burden was required, the incubation period was increased to 6 h to ensure full recovery of worms – these worms were not used for the production of Excretory–Secretory (E–S) products. After 6 h the abomasum was removed from the sieve, which was then carefully scrutinized for any remaining worms. Worms were recovered from the incubation solution and counted immediately. The abomasal washings were made up to 1.5 litres with HBSS, mixed well, and a 100 ml aliquot removed, to which 5 ml of Lugol's iodine were added to kill/stain the worms. Aliquots were examined microscopically for worms, and the final worm burden was calculated.

Preparation of T. circumcincta E–S products

Freshly isolated worms were washed further with sterile RPMI 1640 (Gibco) containing glucose (1% w/v), gentamycin (1 $\mu\text{g}/\text{ml}$), penicillin/streptomycin (500 IU/ml and 5 mg/ml) and glutamine (10 μM), transferred to a sterile culture flask and incubated at a density of approximately 100 worms/ml of medium. Cultures were maintained at 37 °C for 14 h, after which the supernatant was removed and filtered through a 0.22 μm Millipore filter, to eliminate parasite eggs. The supernatant was then dialysed against distilled water over a period of 24 h, and concentrated approximately 50-fold, using Centricon-10 filters (Amicon, UK). Protein content was estimated by the Bradford method (Bradford, 1976) and the material stored at –80 °C.

Rabbit polyclonal antisera

Adult female New Zealand White rabbits were supplied by the Queens Medical Centre Animal House, University of Nottingham and were maintained under conventional conditions in the School of Biology Animal House. Following collection of naïve blood samples from each rabbit (approximately 5 ml), rabbits were vaccinated according to the following protocol, each boost being administered at 2-weekly intervals. The primary dose, consisting of 300 μg *T. circumcincta* E–S antigen, in a volume of 1 ml of PBS, was emulsified with 1 ml of Freund's Complete adjuvant (SIGMA) and injected subcutaneously in 4 sites. The first boost comprised 150 μg *T. circumcincta* E–S antigen, in a volume of 1 ml of PBS, emulsified with 1 ml of Freund's Incomplete adjuvant (SIGMA) and this was also injected subcutaneously in 4 sites. An identical protocol was

followed for the second and third boosts. One day prior to each boost a 1–2 ml blood sample was taken from the lateral ear vein in order to test the serum antibody levels during the vaccination period.

Two weeks following the final boost, the rabbits were exsanguinated. Blood was left to clot for 1–2 h at room temperature, ringed to separate the clot from the wall of the universal tube, and left to clot further overnight at 4 °C. The fluid was subsequently removed, and centrifuged at 2000 *g* for 10 min, after which the serum was collected and stored in aliquots at –80 °C.

Isolation and labelling of rabbit IgG from whole rabbit serum

A 5 ml volume of whole serum was used for each IgG isolation. The pH of the serum was adjusted to pH 7.0, by dialysis against 0.02 M sodium phosphate buffer (pH 7.0). A Hi Trap G (Protein G) column (Pharmacia) was washed out twice with 15 ml of distilled water, in order to remove the ethanol preservative. The column was then equilibrated with 3 column volumes of 0.02 M sodium phosphate buffer (pH 7.0). The serum sample was added to the column, with a syringe, and the column was washed with 5 column volumes of 0.02 M sodium phosphate buffer (pH 7.0). IgG was then eluted with 0.1 M glycine–HCl buffer (pH 2.7). Fractions of 1 ml were collected into Eppendorf tubes containing 100 μ l of 1 M Tris–HCl buffer (pH 9.0), to ensure that the final pH of the sample was neutral. The fractions were analysed on a spectrophotometer at 280 nm, and the fractions containing IgG were pooled, and subsequently concentrated to 7–8 mg/ml, using Centricon 10 filters (Amicon, UK). Aliquots were stored at –80 °C. The Hi Trap columns were stored in 20% ethanol at 4 °C.

Conjugation of alkaline phosphatase to rabbit IgG was carried out using a kit manufactured by Boehringer Mannheim (Catalogue no. 1 829 688). The pH of the IgG solution was adjusted to pH 9.8, by overnight dialysis against 1 M sodium carbonate buffer (pH 9.8). The concentration of the IgG solution was checked photometrically prior to coupling, to ensure a critical concentration of 6–8 mg/ml. Fifty μ l of the IgG solution were added to 100 μ l of alkaline phosphatase (20 mg/ml), mixed well, and incubated overnight at 4 °C. Twenty μ l of triethanolamine solution (2 M, pH 8.0) were added to the mixture, followed by 40 μ l of sodium borohydride solution (200 mM), mixed well, and incubated at 4 °C for 30 min. Five μ l of triethanolamine solution (2 M, pH 8.0) were added, and the mixture incubated again for 2 h at 4 °C. The conjugate was stabilized by the addition of 10 μ l of glycine solution (1 M, pH 7.0) to the incubation solution, and mixed well. The solution was dialysed overnight with 3 changes of 200 ml of dialysis buffer (pH 6.5; Manufacturer's own). The

conjugate was then transferred to an Eppendorf tube, the volume determined, and the same volume of stabilizing reagent, with BSA and Kathon[®]CG (Manufacturer's own) was added. The conjugate was stored at 4 °C.

Coproantigen ELISA for T. circumcincta

All the procedures described here were optimized and have been described fully by Johnson (1999). These include optimal concentrations of capture and detection antibodies, faecal supernatant dilution, blocking agents, times for incubation and microtitre plates. The description that follows is based on optimal concentrations and times, with just one exception. The role of heat treatment in reducing cross-reactivity is evaluated and the optimal treatment described and justified in the results section of this paper. Other approaches for reducing cross-reactivity were also evaluated, but none of these proved as useful as heat treatment (Johnson, 1999).

A 5 μ g/ml solution of rabbit anti-*T. circumcincta* ES IgG was prepared in 1 M carbonate–bicarbonate buffer (pH 9.6), and 50 μ l added to each well of 96-well flat-bottomed Dynatech Immulon 1 plates (capture antibody). The plates were sealed with cling-film, incubated at 4 °C overnight and then washed 3 times with PBS 0.05% Tween 20. In order to block unoccupied binding sites, 100 μ l of 1% (w/v) bovine serum albumin (BSA; Fraction V, Sigma) in PBS 0.05% Tween 20 were added to each well, and left for 1 h at room temperature. Plates were washed 3 times with PBS 0.05% Tween 20.

Faecal supernatant was prepared by mixing the faecal sample with PBS 0.3% Tween 20, at a dilution of 1:200, until faecal slurry was formed. The mixture was then centrifuged at 2000 *g* for 30 min. Fifty μ l of the supernatant were added to each well of the microassay plate, and incubated for 90 min at room temperature. All samples were run in triplicate. Plates were washed 3 times with PBS 0.05% Tween 20.

Fifty μ l/well of a 1:160 dilution of rabbit anti-*T. circumcincta* ES IgG alkaline phosphatase were added (detecting antibody), and the plates incubated for 90 min at room temperature. Plates were washed 5 times with PBS 0.05% Tween 20, the last 2 washes consisting of 1 min incubations. Then 100 μ l of substrate solution (p-nitrophenol phosphate disodium, Sigma Fast) were added to each well, and plates incubated in the dark for 30 min at 37 °C. Optical density readings were taken at 405 nm on a Dynatech microassay reader.

Procedures used in evaluating the assay

The sheep from which adult parasites, and faecal samples were collected, were generously made available by the Moredun Research Institute (*T. circumcincta*, *T. colubriformis*, *N. battus* and material

from worm-free animals), Bristol Veterinary School (*T. circumcincta*, *H. contortus*), Veterinary Laboratory Agency (Department of the Environment, Food and Rural Affairs, HM Government, UK; *N. spathiger*), Pfizer Animal Health (*C. oncophora*) and Compton Animal Health (material from worm-free sheep). We were dependent on the suppliers for the breed, age and sex of the sheep, and the isolates of ovine parasites used since the samples provided were mostly from animals involved in various trials at the respective research centres.

Evaluation of the sensitivity of the assay

In order to evaluate the capture sensitivity of the assay in detecting *T. circumcincta* E-S antigens in ovine faecal material, uniform volumes of E-S products were added to faecal supernatants, prepared from faecal samples from worm-free sheep (More-dun barn-reared lambs). To control for interfering components of the faeces, E-S products were also prepared with PBS, to the same uniform volumes, of known concentrations. The E-S products were added to faecal supernatant or PBS in doubling dilutions in order to give a final range of concentrations of E-S from 0.0625 µg/ml to 8 µg/ml.

Evaluation of the range of signal from non-infected animals

In order to determine the range of background, or noise level, in the ELISA, and thereby to provide a cut-off value above which the ELISA signal could be considered to come from infected animals, faecal samples from 98 worm-free, barn-reared lambs were assayed. These were compared with 8 samples from animals experimentally infected with *T. circumcincta*.

Assessment of inter- and intra-sample variation in optical density readings

The degree of variation between, and within faecal samples taken from sheep infected with *T. circumcincta* and samples taken from worm-free sheep, was tested under standard optimum conditions. Faecal samples from 8 sheep experimentally infected with *T. circumcincta* and 8 worm-free sheep were used for this purpose. Each faecal sample was divided into 3 portions, from each of which 3 faecal supernatants were prepared independently. Each faecal supernatant preparation was then tested in triplicate.

Assessment of the cross-reactivity of the assay

Faecal supernatants were prepared from sheep harbouring moderate patent infections of *Haemonchus contortus* ($n=3$), *Trichostrongylus colubriformis* ($n=2$), *Cooperia oncophora*, *Nematodirus battus*

($n=2$) and *Nematodirus spathiger*. Also tested in the assay were faecal samples from mice experimentally infected with *Heligmosomoides polygyrus* ($n=4$), *Trichinella spiralis* ($n=2$) and *Hymenolepis microstoma* ($n=3$), and faecal samples from hamsters infected with *Necator americanus* ($n=4$). All infections were confirmed through the presence of eggs in the faeces. These were compared to faecal samples from 4 sheep infected with *T. circumcincta* and from 5 worm-free sheep. Faecal samples were evaluated for individual animals, and mean values based on triplicate ODs for each animal were used to calculate a group mean (\pm S.E.M.).

Evaluation of sensitivity and specificity of the assay

To estimate conventional diagnostic sensitivity and specificity of the assay we used the formulae given by Galen & Gambino (1975) where

sensitivity =

$$\frac{\text{true positive results}}{\text{true positive results} + \text{false negative results}} \times 100,$$

and

specificity =

$$\frac{\text{true negative results}}{\text{true negative results} + \text{false positive results}} \times 100.$$

Relationship between OD signals generated in the coproantigen ELISA and the worm burden

In order to relate the signal produced in ELISA to the worm burdens of infected animals, abomasa and faecal samples were collected from freshly slaughtered lambs at a local abattoir. Several visits were made to the abattoir in 1999 until a total of 23 sheep had been sampled. Faecal supernatants were prepared from the faecal sample of each animal, heat treated, and then tested in triplicate, under optimal conditions in the ELISA. Worms were recovered from the abomasa as described earlier and the numbers of *T. circumcincta* present were counted.

Data presentation and statistical analysis

Some of the data are derived from single samples, and for these the values presented are means of triplicate assays. Where quantitative data were employed, these are summarized as mean values \pm standard error of the mean (S.E.M.). Quantitative data were analysed by ANOVA, by repeated measures ANOVA or by nested ANOVA, depending on the format of the data and the required analysis, using the software packages SPSS version 9.0.0 or Statgraphics Version 7. Correlations between variables

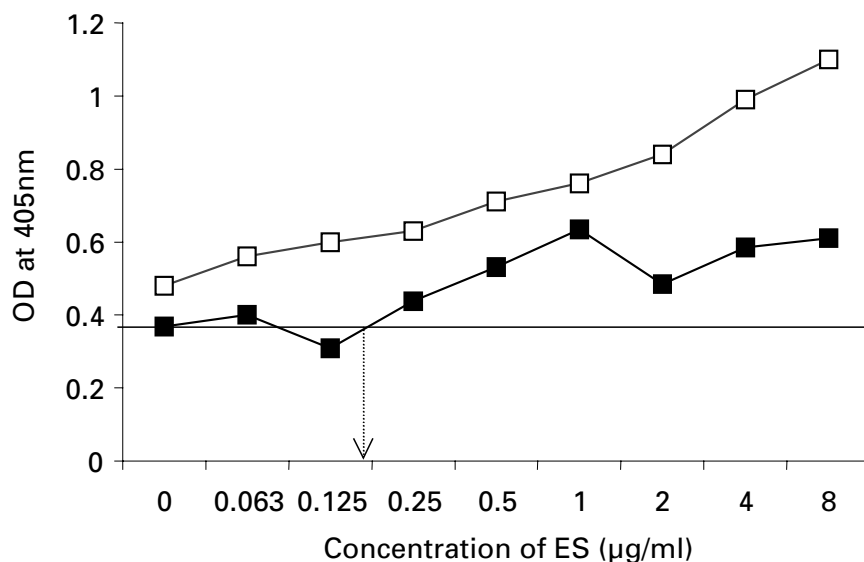


Fig. 1. Sensitivity of the copro-antigen capture ELISA, with PBS (□) or faecal supernatant from non-infected sheep (■) as diluents. E-S products were added in equal volume to PBS or supernatant from faeces from non-infected sheep in doubling dilutions, as described in the text. The mean OD (+3 S.D.) of the unspiked faecal supernatant is indicated by the horizontal line. The vertical arrow indicates the lowest concentration of antigen detected by the assay.

were assessed by Spearman's Test based on ranks. We employed a stringent threshold for the detection of infection, equivalent to an upper limit for values from worm-free control animals, calculated in each run of the assay as the mean value plus 3 times the standard deviation (S.D.). This should cover about 99% of the values from uninfected animals and values above this were considered to indicate the presence of infection.

RESULTS

Capture sensitivity of the assay

The sensitivity of the assay in detecting low levels of *T. circumcincta* E-S antigens added to the supernatant extract of ovine faeces is illustrated in Fig. 1. As can be seen, the signal produced in the ELISA increased consistently as the concentration of E-S increased in both faecal supernatant (FSN) and PBS, although a stronger signal was detected in the case of E-S diluted with PBS, compared with FSN. The results obtained show a lower resolving limit of approximately 0.18 µg/ml (180 ng/ml) for E-S antigen in sheep faeces. There was a significant positive correlation between OD and the concentration of E-S in both cases (PBS $r_s = 0.917$, $n = 9$, $P < 0.001$; FSN $r_s = 0.634$, $n = 9$, $P = 0.005$).

Determination of a diagnostic cut-off value

Fig. 2 shows that the values obtained with samples from worm-free sheep were closely grouped and typically with low ODs (range 0.01–0.02). The respective cut-off value was calculated as 0.078. All the samples from infected animals were above this level,

although three samples from worm-free sheep also exceeded the threshold for non-infected animals, giving a 100% accuracy in diagnosis of infected sheep and 96.9% accuracy for worm-free status. The sample from infected sheep Red 6, registered a low OD of 0.12, just above the threshold. This particular sample was 13 months old, and could have deteriorated (see below).

Assessment of inter- and intra-sample variation in optical density readings

In order to assess the extent of variation within, and between samples, and at the various stages during preparation of samples for assay, the OD values obtained from 8 infected and 8 worm-free sheep were analysed by Nested ANOVA and the results are summarized in Table 1. The majority of variance in the data was attributable to the difference between infected and worm-free status. Inter-sample variation, among *T. circumcincta* and worm-free groups, accounted for just 12% of the variance and within-sample variance was negligible. A further 0.32% of variance was attributable to variation between supernatant preparations and 0.37% remained unexplained.

Assessment of the cross-reactivity of the assay

The results in Fig. 3 show that faecal material from sheep infected with *T. circumcincta* generated a high OD reading compared to the cut-off value of 0.19 derived from worm-free sheep. The signal:noise ratio was 5. However, it is also evident that there was a significant amount of cross-reactivity with *H. contortus* (signal:noise ratio 4.2) and *N. spathiger*

Table 1. Assessment of inter- and intra-sample variation in OD signal by nested ANOVA of optical density readings from faecal samples obtained from worm-free and infected sheep

Source of variation	D.F.	Mean square	Variance component	Percentage
Infection status*	1	228.99	1.042	87.07
Sheep†	14	3.96	0.146	12.24
Faecal sample‡	32	0.015	<0.001	<0.01
Faecal supernatant§	96	0.016	0.004	0.32
Error	288	0.004	0.004	0.37

* Samples were either from infected or worm-free sheep.

† Samples were assayed from 8 infected and 8 worm-free sheep.

‡ Each faecal sample was divided into 3 subsamples that were processed independently.

§ Each faecal subsample provided 3 separate supernatants for the assay.

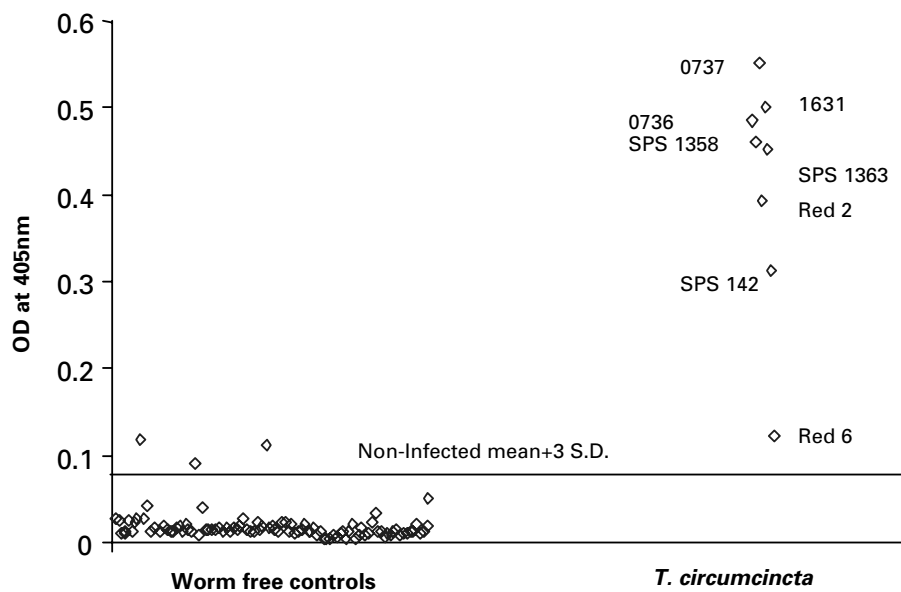


Fig. 2. Determination of the upper limit for the signal from non-infected animals. The values of OD readings from 98 faecal samples from worm-free lambs are compared with values obtained from 8 faecal samples from sheep experimentally infected with *Teladorsagia circumcincta*. The lettering and numbers next to the points representing infected animals are references to specific animals.

(signal:noise ratio 2.3) but not with other species. This assay was repeated 3 times, and on each occasion, similar results were obtained.

Heat treatment of faecal supernatant to eliminate cross-reactivity

Heat treatment of faecal supernatants from worm-free and *T. circumcincta* infected sheep revealed the presence of heat-sensitive material, with a partial loss of signal to *T. circumcincta* (28% reduction) following treatment at 100 °C for 5 min. However, there was less impact on the signal:noise ratio which only fell from 16.6 to 14.4 (data not illustrated). Further direct comparative tests on faecal supernatants gave a reduction in the OD of samples from animals with

H. contortus from 0.33 to 0.09, compared with 0.05 to 0.04 for the worm-free animals but only 0.64 to 0.6 for an animal infected with *T. circumcincta*. Hence, whilst there was a reduction in the signal from all three samples, that from the animal carrying *T. circumcincta* remained considerably higher. We therefore explored further the efficacy of heat treatment in reducing cross-reactivity with other GI nematodes.

Effect of duration of heat treatment of faecal supernatant

In order to optimize the length of exposure to heat treatment at 100 °C (while preserving specific and eliminating cross-reactive signals), samples from sheep infected with *T. circumcincta*, *H. contortus* and

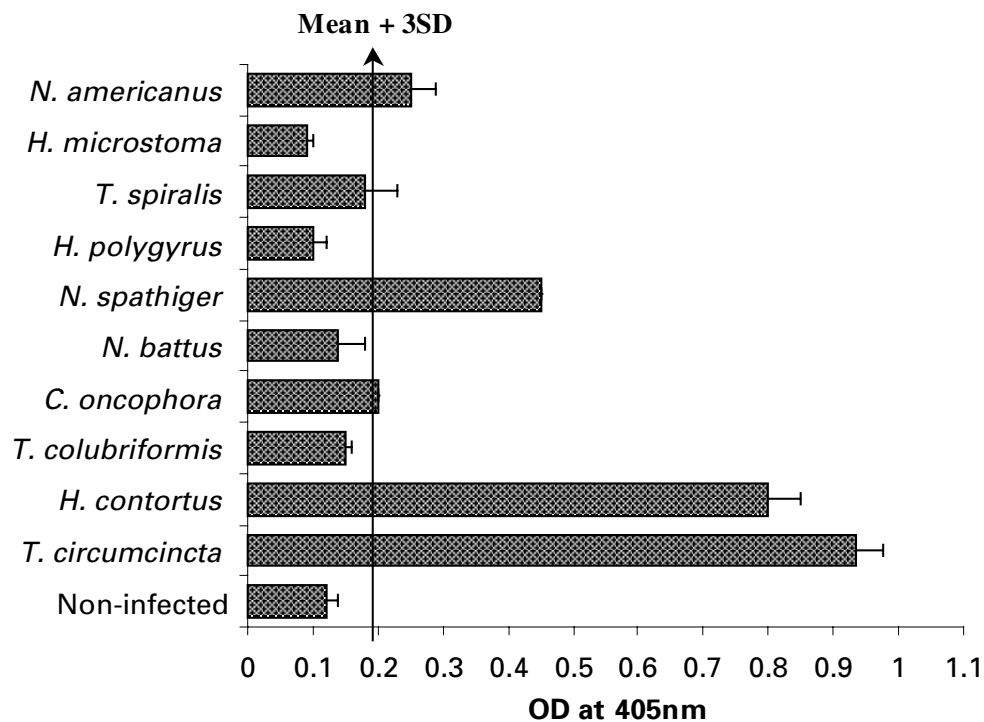


Fig. 3. Specificity of the copro-antigen capture ELISA, as determined through comparison of OD readings obtained from faeces from sheep and rodents experimentally infected with other species of GI nematodes and cestodes. The negative cut-off value (0.19) was calculated by the mean OD of the samples from worm-free sheep (+3 s.d.) and is indicated by the arrow across the figure. The mean values from the worm-free rodents are not illustrated on the graph, but were: mouse non-infected OD=0.27, hamster non-infected OD=0.12.

from worm-free animals were exposed to varying durations of heat treatment. A loss of signal occurred in all cases (data not illustrated); however, proportionally, the greatest loss of signal with time was in the samples from animals with *H. contortus*. After just 20 min of heat treatment, this was reduced to below background level. In contrast, the specific *T. circumcincta* signal to noise ratio was reduced from 17.5 to 5 after 20 min, but was still very much higher than the threshold. Continued heat treatment after 20 min resulted in a further loss of specific activity to *T. circumcincta*, and the signal disappeared altogether after 60 min. This protocol was repeated several times with some variation but essentially with similar results each time. Because a period of 20 min sufficed to enhance the difference between the signals from *T. circumcincta* and *H. contortus*, this was adopted as the optimal treatment and used thereafter in all assays.

Effect of temperature on cross-reactivity of the assay

Faecal supernatants were heat treated for 20 min at temperatures ranging from 21 °C to 100 °C and then assayed. As expected, there was a loss of signal across all of the samples with heat treatment (data not illustrated) but in the case of *H. contortus*, the greatest loss was between 50 °C and 100 °C, at which temperature the signal was reduced close to the negative

threshold. At 100 °C, the signal : noise ratios of faeces from *T. circumcincta* and *H. contortus* infected sheep were 11.7 and 1.9, respectively. Overall, it was considered that a temperature of 100 °C was the simplest to implement, achieving an optimal balance between minimal loss of the specific signal, whilst essentially eliminating the major component of cross-reactivity with *H. contortus* and this was adopted in all future assays.

Effect of a combined temperature of 100 °C for 20 min on specificity of the assay

Before proceeding further, it was necessary to conduct a quantitative comparison. For this, all samples available from *T. circumcincta* ($n=12$), and *H. contortus* ($n=6$) infected sheep, together with 10 samples from naïve sheep, were tested in a direct comparison. The results are illustrated in Fig. 4A. There was a loss of signal in all samples tested, but the relative effect on the signal from *H. contortus* (78.8% reduction) was greater than that from *T. circumcincta* (27.0% reduction) and that from naïve animals (34.9%). The cross-reactive signals from *H. contortus* were reduced in all but 2 cases to below the cut-off level and the 2 exceptions gave signals that were very close to the background level (0.118), at 0.143 and 0.156. Overall, heat treatment improved sensitivity from 66.7 to 85.7%, and specificity from 62.5 to 87.5%.

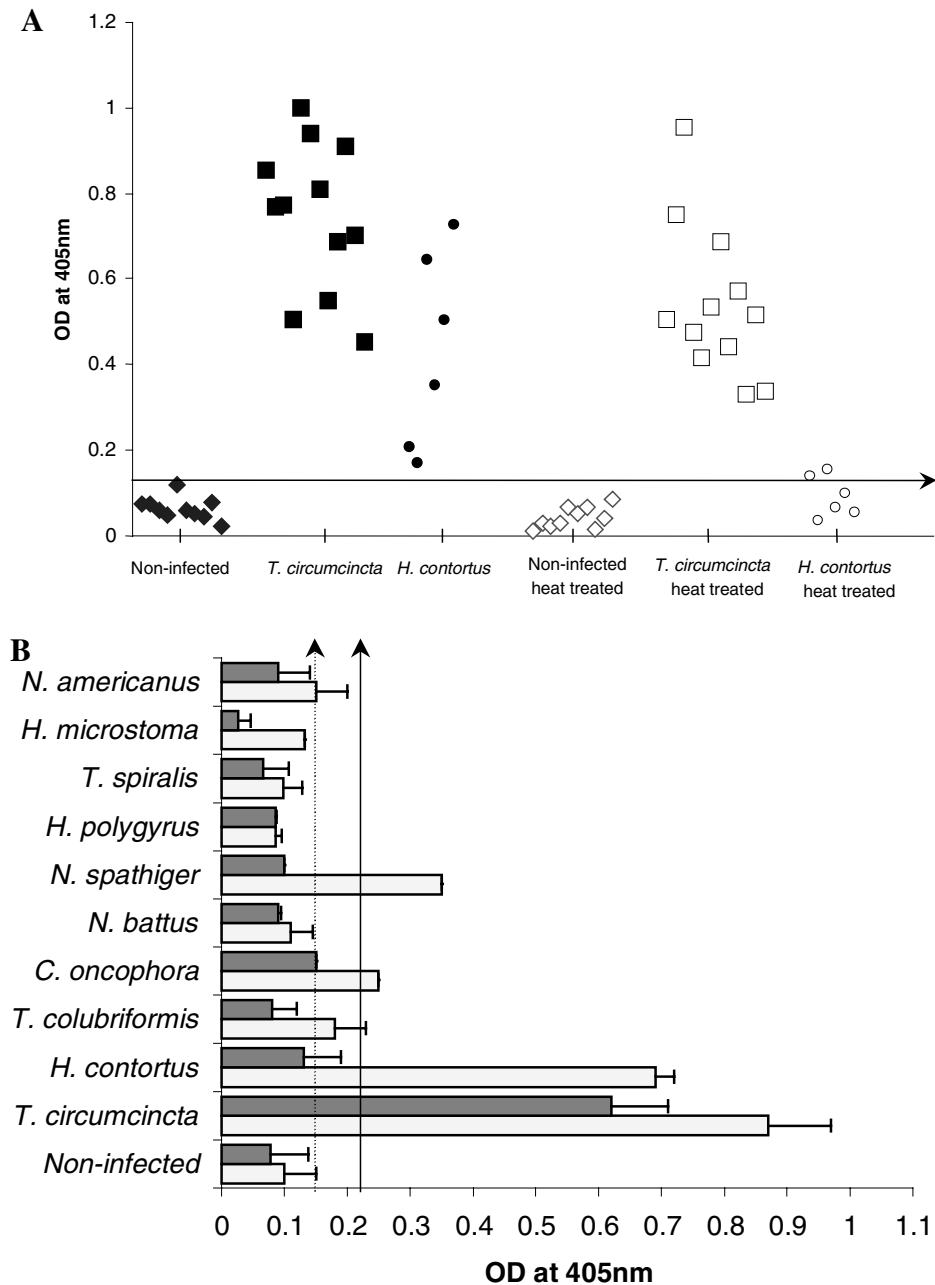


Fig. 4. (A) Quantitative assessment of the effect of subjecting faecal samples to heat treatment at 100 °C for 20 min. Values are OD values from individual sheep before and after heat treatment. A repeated measures ANOVA with heat treatment as the within-subject measure and infection as the between-subject measure gave a significant overall effect of heat treatment ($F_{1,25} = 101.6$, $P < 0.001$), but also a significant interaction between heat-treatment and infection ($F_{2,25} = 22.7$, $P < 0.001$) reflecting the proportionally much greater reduction in the signal from the *Haemonchus contortus*-infected sheep. There was also a significant main effect of infection ($F_{2,25} = 57.8$, $P < 0.001$). (B) Specificity of the coproantigen capture ELISA before (pale columns) and after (filled in columns) heat treatment, as determined through comparison of OD readings obtained from faeces from sheep and rodents experimentally infected with other species of GI nematodes and cestodes. The negative cut-off value for sheep samples before heat treatment is shown by the solid line and that after heat treatment by the dotted line and both were calculated by the mean OD of the samples from worm-free sheep (+3 s.d.). The mean values from the worm-free rodents are not illustrated on the graph, but were: non-infected mouse, OD = 0.28 (heat treated = 0.15), non-infected hamster, OD = 0.19 (heat treated = 0.16).

In a further assay, samples from animals infected with a range of species were re-examined. In each case, samples from infected animals were divided into 2 batches, one of which received no treatment, the other which was heat-treated for 20 min at 100 °C.

As Fig. 4B shows, the cross-reactive signals previously observed in *H. contortus*, and less so in *N. spathiger*, were again evident but after heat treatment were reduced to below the threshold level. By comparison, the specific *T. circumcincta* signal:noise

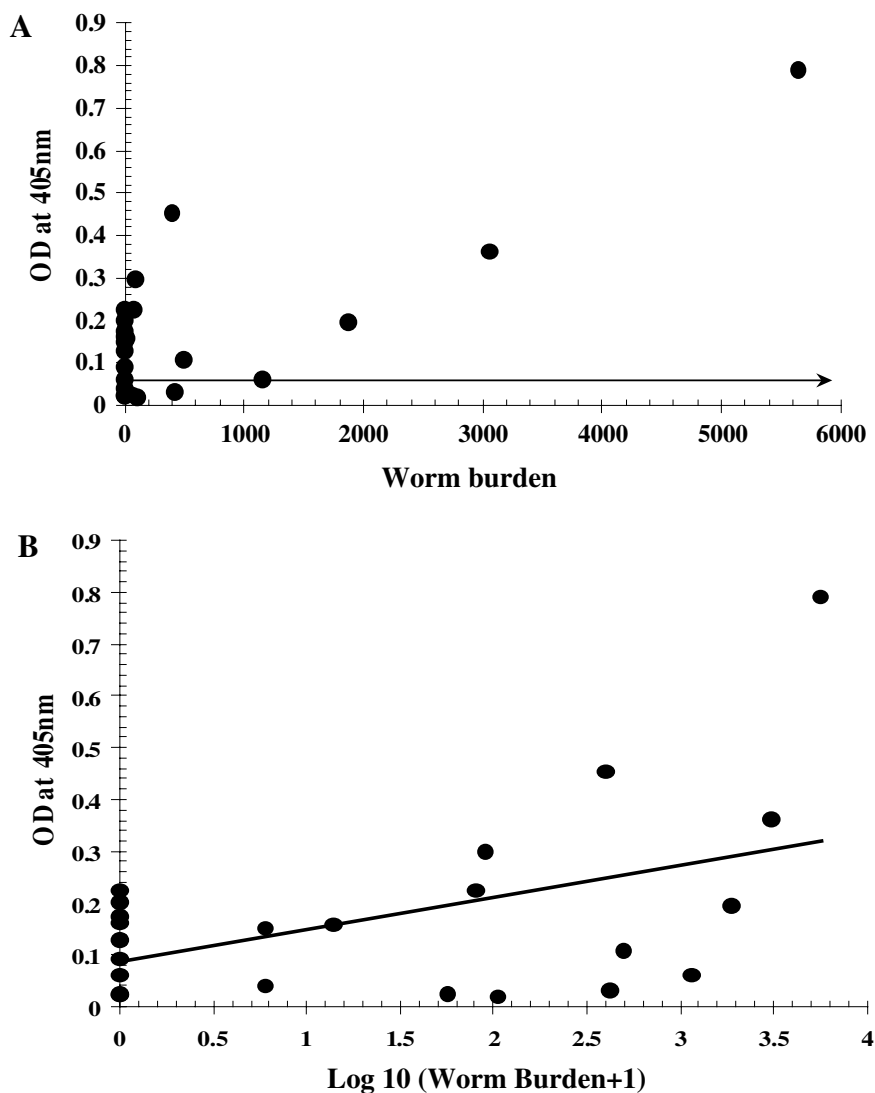


Fig. 5. The relationship between OD values and *Teladorsagia circumcincta* worm burdens in 23 sheep, obtained from a local abattoir in Nottingham. In (A), the raw data are given and the maximum threshold for the OD signal for uninfected status was 0.078 (horizontal line). (B) The worm burden data are expressed as Log₁₀ (total worms + 1) and a line of best fit is shown to guide the eye.

ratio, was only reduced by heat treatment from 8.8 to 7.9.

Relationship between OD signal generated in the coproantigen ELISA and the worm burden

Worm burdens from 23 naturally infected sheep obtained from a local abattoir ranged from zero to 5494 (no worms were recovered from 11 of the sheep but these may have harboured low-intensity worm burdens or arrested larvae). The relationship of the OD signal to worm burden is illustrated in Fig. 5. This was a significant positive relationship with $r_s = 0.472$, $n = 23$ and $P = 0.023$. Although there was a clear dose-dependent relationship between worm burden and the signal from the *T. circumcincta* ELISA, at very low levels of infection, there was some discrepancy in the discrimination of positive

and negative samples. However, there was no significant relationship between the OD signal and faecal egg counts. The coproantigen assay was repeated on the faecal samples on 3 separate occasions, and similar results were achieved on each occasion.

DISCUSSION

The results reported in this paper establish conclusively that a CC-ELISA for the detection of *T. circumcincta* is feasible and scientifically valid. Moreover, since the method was based on the conventional antigen-capture ELISA methodology, the approach lends itself to almost full automation after provision of faecal samples for analysis. Since in most countries domestic livestock are now routinely ear-tagged, rectal samples taken at initial roundup of the

animals could be sent off for assessment and only those carrying confirmed heavy infestations, threatening productivity and welfare, would be treated with anthelmintic. Therefore, in pastoral countries where sheep are farmed in large flocks, routine preliminary diagnosis facilitating selective chemotherapy may become commercially viable.

In assessing possible cross-reactivity, we were constrained by available material and were not able to include other common GI nematodes of sheep in the UK, such as *Chabertia ovina*, *Oesophagostomum venulosum* and *Trichostrongylus vitrinus*, and therefore comprehensive evaluation of the assay against all likely species of worms still awaits completion. Nevertheless, among the species that were included, only 2 initially consistently generated cross-reactivity that was of concern. In this context, perhaps the most interesting contribution of this study to the development of CC-ELISAs for diagnosis of GI infections was the demonstration that a simple procedure, the temporary exposure of faecal supernatant to a high temperature, was beneficial in terms of reducing cross-reactivity with other ovine GI nematodes. The period of exposure to an optimum temperature of 100 °C was about 20 min, and this treatment largely preserved the signal : noise ratio for the specific signal from *T. circumcincta* whilst essentially eliminating the cross-reactive signals from *H. contortus* and *N. spathiger*. Whilst the exact explanation for this phenomenon is not known, Johnson (1999) investigated its basis and concluded that heat treatment probably did not target glycosylated residues on E-S proteins and that protein moieties were more likely to be responsible. Clearly the epitopes in E-S from *T. circumcincta* involved in specific recognition were more stable than those from other GI nematodes that generated the cross-reactive signals.

The assay was sensitive enough to detect 0.25 µg of parasite E-S per ml of faecal supernatant, much in line with earlier work on *H. polygyrus* and *S. ratti* in rodents and *O. ostertagi* in cattle, in each of which nanogram quantities of antigen were detected in CC-ELISAs (Nageswaren *et al.* 1994; Johnson *et al.* 1995; Agneessens *et al.* 2001). In terms of quantitative detection of worm burdens in sheep, we were limited by our reliance on abomasal and rectal specimens from the local abattoir. These animals will have been exposed to a range of GI nematodes typical for the region and will have carried worms of each in different stages of development. Since only the abomasal were examined for worms, no information was available about the degree of infection with other species and hence clearly this aspect still awaits more comprehensive evaluation, perhaps under full field trial conditions. Nevertheless, animals with 1000 or more *T. circumcincta* produced strong OD signals that could be considered reliably as indicative of significant infection and the need for treatment. Those with fewer worms produced more variable

signals, but it may also be pertinent that immunity to *T. circumcincta* infections in sheep acts primarily to reduce the fecundity and length of adult worms, rather than to induce loss of adult worms (Stear *et al.* 1995; Strain *et al.* 2002), and it may be that worms affected by the initial immune response also secrete less E-S.

Since in some parts of the world sheep husbandry has become very difficult as a consequence of the failure of all available classes of anthelmintics to control worm burden (van Wyk, 1990), the selective treatment that would become feasible with the availability of this assay might be one way of slowing down this trend. Moreover, by concentrating treatment on heavily infected animals, some of the costs of diagnosis would be offset by savings on the cost of anthelmintics. In terms of benefits on the broader front, the larger part of the *in vivo* reservoir of infection would be eliminated and the untreated animals, carrying lower worm burdens, would have an opportunity to develop natural immunity to re-infection. Thus, selective dosing of animals harbouring heavy infections, and judicious use of anthelmintic drugs, may delay the onset of anthelmintic resistance in regions where it has not yet appeared and may slow the spread in those countries where it is already a significant problem.

The work described here was conducted with the chief objective of developing a specific assay for *T. circumcincta*, but in practical terms an assay merely capable of distinguishing sheep that carry heavy total worm burdens (irrespective of species) may be more useful to the livestock owners. This could be achieved either by the use in parallel of a number of specific assays or by developing an assay based on appropriate proportions of specific sera to detect the mix of species in a given geographical region. Another immunological approach would be to develop monoclonal antibodies for the E-S of each of the important species, as has already been done for *H. contortus* (Ellis *et al.* 1993), although the reported sensitivity in this case was low. These would be used in a mix or as specific assays in parallel. For human GI nematodes, dip sticks may be relevant, much as in the detection of human cestode infections (Allan *et al.* 1993). However, for large-scale farming of domestic animals, an automated CC-ELISA in the hands of an agricultural diagnostic service provider would be the most likely way forward. Now that CC-ELISA assays have been demonstrated as feasible for *O. ostertagi* and for *T. circumcincta*, comparable assays for *H. contortus* and *Trichostrongylus* spp. require development, as well as perhaps a general (higher taxa) assay for all trichostrongyloid GI nematodes. In practice, a logical compromise may be to implement a 2-step diagnostic service, with detection of animals carrying heavy GI nematode (trichostrongyloid) infections as the first step, followed by species-specific CC-ELISA if warranted.

D. A. J. was supported by a post-graduate studentship from the Ministry of Agriculture, Food and Fisheries, for which we are extremely grateful. We are also indebted to Drs R. Coop, F. Jackson, D. Knox and D. Bartley of the Moredun Research Institute, staff at Compton Animal Health and D. Nicholas at Pfizer Animal Health, for the provision of faeces from either infected or worm-free animals.

REFERENCES

- AGNEESSENS, J., CLAEREBOUT, E. & VERCRUYSE, J. (2001). Development of a copro-antigen capture ELISA for detecting *Ostertagia ostertagi* infections in cattle. *Veterinary Parasitology* **97**, 227–238.
- ALLAN, J. C., CRAIG, P. S., GARCIA NOVAL, J., MENCOS, F., LIU, D., WANG, Y., WEN, H., ZHOU, P., STRINGER, R., ROGAN, M. & ZEYHLE, E. (1992). Coproantigen detection for immunodiagnosis of echinococcosis and taeniasis in dogs and humans. *Parasitology* **104**, 347–355.
- ALLAN, J. C., MENCOS, F., GARCIA NOVAL, J., SARTI, E., FLISSER, A., WANG, Y., LIU, D. & CRAIG, P. S. (1993). Dipstick dot ELISA for the detection of *Taenia* coproantigens in humans. *Parasitology* **107**, 79–85.
- ALLAN, J. C., VELASQUEZ-TOHOM, M., TORRES-ALVAREZ, R., YURRITA, P. & GARCIA-NOVAL, J. (1996). Field trial of the coproantigen based diagnosis of *Taenia solium* taeniasis by enzyme linked immunosorbent assay. *American Journal of Tropical Health and Hygiene* **54**, 352–356.
- BAUMANN, D. & GOTTSTEIN, B. (1987). A double antibody sandwich ELISA for the detection of *Entamoeba histolytica* in stool samples of humans. *Tropical Medicine and Parasitology* **38**, 81–85.
- BRADFORD, M. M. (1976). A rapid and sensitive method for the quantification of microgram quantities of protein utilising the principle of protein-dye binding. *Analytical Biochemistry* **72**, 248–254.
- COLES, G. C. (1995). Chemotherapy of human nematodes: learning from the problems of sheep. *Journal of the Royal Society of Medicine* **88**, 649P–651P.
- CONDOR, G. A. & CAMPBELL, W. C. (1995). Chemotherapy of nematode infections of veterinary importance, with special reference to drug resistance. *Advances in Parasitology* **35**, 1–84.
- DEPLAZES, P., GOTTSTEIN, B., ECKERT, J., JENKINS, D. J., EWALD, D. & JIMINEZ-PALACIOS, S. (1992). Detection of *Echinococcus* coproantigens by enzyme-linked immunosorbent assay in dogs, dingoes and foxes. *Parasitology Research* **78**, 303–308.
- ELLIS, T. M., GREGORY, A., TURNOR, R., KALKHOVEN, M. & WROTH, R. H. (1993). Detection of *Haemonchus contortus* surface antigen in faeces from infected sheep. *Veterinary Parasitology* **51**, 85–97.
- GALEN, R. S. & GAMBINO, S. R. (1975). *Beyond Normality: The Predictive Value of Medical Diagnosis*. Wiley, New York.
- GREEN, E. L. (1986). Immunological detection of parasite antigen in faeces. *Parasitology Today* **2**, 198–200.
- GREEN, E. L., WARHURST, D. C. & MILES, M. A. (1985). Immunodiagnostic detection of *Giardia* antigen in faeces by a rapid visual enzyme linked immunosorbent assay. *The Lancet* **2**, 691–694.
- HENNESSY, D. R. (1997). Livestock parasite treatment – a call for greater interaction between research and industry sectors. *International Journal for Parasitology* **27**, 1129–1133.
- JACKSON, F. & COOP, R. L. (2000). The development of anthelmintic resistance in sheep nematodes. *Parasitology* **120**, S95–S107.
- JACKSON, F., JACKSON, E. & COOP, R. L. (1992). Evidence of multiple anthelmintic resistance in a strain of *Teladorsagia circumcincta* (*Ostertagia circumcincta*) isolated from goats in Scotland. *Research in Veterinary Science* **53**, 371–374.
- JELENIK, T., PEYERL, G., LOSCHER, T. H. & NOTHDURFT, H. D. (1996). Giardiasis in travellers: evaluation of an antigen-capture ELISA for the detection of *Giardia lamblia*-antigen in stool. *Zeitschrift für Gastroenterologie* **34**, 237–240.
- JOHNSON, D. A. (1999). Coproantigen capture ELISA for the detection of intestinal nematode infections. Ph.D. thesis. School of Biological Sciences, University of Nottingham.
- JOHNSON, D. A., BEHNKE, J. M. & COLES, G. C. (1999). Development of a coproantigen capture ELISA for the detection of *Teladorsagia circumcincta* in sheep. In *Proceedings of the 17th WAAVP Conference, Copenhagen, Denmark*.
- JOHNSON, M. (1994). Coproantigen ELISA for GI nematodes. Ph.D. thesis. School of Biological Sciences, University of Nottingham.
- JOHNSON, M. J., BEHNKE, J. M. & COLES, G. C. (1995). Detection of gastrointestinal nematodes by a coproantigen capture ELISA. *Research in Veterinary Science* **60**, 7–12.
- NAGESWAREN, C., CRAIG, P. S. & DEVANEY, E. (1994). Coproantigen detection in rats experimentally infected with *Strongyloides ratti*. *Parasitology* **108**, 335–342.
- NICHOLLS, J. & OBENDORF, D. L. (1994). Application of a composite faecal egg count procedure in diagnostic parasitology. *Veterinary Parasitology* **52**, 337–342.
- RODRIGUEZ-CANUL, R., FRASER, A., ALLAN, J. C., DOMINGUEZ-ALPIZAR, J. L., ARGAEZ-RODRIGUEZ, F. & CRAIG, P. S. (1999). Epidemiological study of *Taenia solium* taeniasis/cysticercosis in a rural village in Yucatan state, Mexico. *Annals of Tropical Medicine and Parasitology* **93**, 57–67.
- ROEPSTORFF, A. (1998). Natural *Ascaris suum* infections in swine diagnosed by coprological and serological (ELISA) methods. *Parasitology Research* **84**, 537–543.
- SMITH, G. (1990). Chemotherapy: future problems. In *Hookworm Disease. Current Status and New Directions* (ed. Schad, G. A. & Warren, K. S.), pp. 291–303. Taylor & Francis, London.
- STEAR, M. J., BISHOP, S. C., DOLIGALSKA, M., DUNCAN, J. L., HOLMES, P. H., IRVINE, J., MCCRIRIE, L., MCKELLAR, Q. A., SINSKI, E. & MURRAY, M. (1995). Regulation of egg production, worm burden, worm length and worm fecundity by host responses in sheep infected with *Ostertagia circumcincta*. *Parasite Immunology* **17**, 643–652.
- STEAR, M. J. & MURRAY, M. (1994). Genetic resistance to parasitic disease: particularly of resistance in ruminants to gastrointestinal nematodes. *Veterinary Parasitology* **54**, 161–176.
- STRAIN, S. A. J., BISHOP, S. C., HENDERSON, N. G., KERR, A., MCKELLAR, Q. A., MITCHELL, S. & STEAR, M. J. (2002). The genetic control of IgA activity against *Teladorsagia circumcincta* and its association with parasite resistance in naturally infected sheep. *Parasitology* **124**, 545–552.

- URQUHART, G. M., ARMOUR, J., DUNCAN, J. L., DUNN, A. M. & JENNINGS, F. W. (1987). *Veterinary Parasitology*. Avon: Longman Scientific & Technical.
- VAN WYK, J. A. (1990). Occurrence and dissemination of anthelmintic resistance in South Africa, and management of resistant worm strains. In *Resistance of Parasites to Antiparasitic Drugs* (ed. Boray, J. C., Martin, P. J. & Roush, R. T.), pp. 103–113. MSD, AGVET, Rahway, New Jersey, USA.
- WALLER, P. J. (1986). Anthelmintic resistance in nematode parasites of sheep. *Agricultural Zoology Reviews* **1**, 333–373.
- WALLER, P. J. (1993). Control strategies to prevent resistance. *Veterinary Parasitology* **46**, 133–142.
- WALLER, P. J., DASH, K. M., BARGER, I. A., LE JAMBRE, L. F. & PLANT, J. (1995). Anthelmintic resistance in nematode parasites of sheep: learning from the Australian experience. *Veterinary Record* **136**, 411–414.