

Corticosterone differences rather than social housing predict performance of T-maze alternation in male CD-1 mice.

Ann E. Fitchett^{1,2}, Christopher J Barnard¹ and Helen J. Cassaday³

¹ School of Biology
University of Nottingham
University Park
Nottingham
NG7 2RD, UK

² Present address:
Department of Psychology
Durham University
Science Site
South Road
Durham
DH1 3LE, UK

³ Correspondence:
School of Psychology
University of Nottingham
University Park
Nottingham
NG7 2RD, UK
phone: +44 (0)115 951 5124
fax: +44 (0)115 951 5324
e-mail: helen.cassaday@nottingham.ac.uk

Abstract

This study examined the effects of social housing manipulations on body weight, corticosterone levels, and performance of T-maze alternation in male CD-1 mice. Males that adopted a dominant social rank were heavier than those that adopted a subordinate social rank. Dominant males also had lower corticosterone concentrations than the subordinates. However, there was little to suggest that these physiological indicators of social rank were moderated by housing condition. Indeed, statistical analysis confirmed that the difference in body weights was evident before males were socially housed.

The mice showed high levels of spatial alternation on the T-maze from the start of testing so performance accuracy was high. Neither social rank nor housing condition had any clear categorical effect on T-maze performance. However, performance did fluctuate over successive blocks of testing and there was a negative association between accuracy on the T-maze and corticosterone levels (consistent with performance impairment because of elevated corticosterone). Therefore, under present conditions, individual differences in corticosterone were a better predictor of T-maze performance than were social rank or housing condition.

The results of the present study lend further support to the proposition that corticosterone levels measured non-invasively in urine may be used to predict diverse welfare outcomes for laboratory mice, from body weight to cognitive performance. Moreover, intrinsic physiological parameters rather than external influences such as social housing may have more influence on mouse behaviour.

Keywords: CD-1 mouse; social housing; social rank; urinary corticosterone; T-maze alternation; animal welfare

Running head: Social housing, corticosterone and T-maze performance

Introduction

Despite the increased risk of aggressive encounters, a number of studies advocate the use of group housing for rodents (Valzelli et al 1977; Ikemoto and Panksepp 1992; Gray and Hurst 1995; Hurst et al 1997; Jennings et al 1998; Van Loo et al 2000, 2004; Suckow et al 2001). One reason for this recommendation is that isolated mice have been shown to display a number of deleterious behavioural and physiological alterations (Koyama 1993, 1995; Haseman et al 1994; Wu et al 2000; Bartolomucci et al 2003a; Guo et al 2004) compared to group housed subjects. These alterations have been termed the 'isolation syndrome' (Valzelli, 1973). Thus the effects of group housing on behavioural and physiological parameters are likely to impact on a range of welfare parameters.

Earlier studies have compared learning ability in socially and singly housed rodents, but findings have to date been mixed. Some have found evidence for cognitive impairment in isolated rodents (Valzelli et al 1977; Lu et al 2003; Elliott and Grunberg 2005; Sandstrom and Hart 2005; Chida et al 2006); others have demonstrated that, under some circumstances, isolated individuals perform better than those that are socially housed (Wongwitdecha and Marsden 1996; Moragrega et al 2003, 2005; Hermes et al 2005); and, depending on the learning measure in use, there can be no difference between isolated and group housed mice (Coudereau et al 1997; Krohn et al 2006).

Social rank differences - that are more pronounced in mice than rats - may go some way towards explaining these discrepancies. When male mice are housed together they generally engage in aggressive interactions to establish a dominance hierarchy (Crowcroft 1966; Poole and Morgan 1973, 1976; Mondragón et al 1987; Collins et al 1997). Social rank differences are associated with a number of behavioural and physiological differences (e.g., Desjardins et al 1973; Kudryavtseva et al 1991; Martínez et al 1998; Lumley et al 1999; Bartolomucci et al 2001, 2003b,c, 2004, 2005). Performance in learning tasks may also be affected (Barnard and Luo 2002; Spritzer et al 2004;

Fitchett et al 2005a, 2006). Furthermore, studies have also found that the negative consequences of living in a stressful social environment may persist in subordinate males for days, even weeks, after interactions have stopped (Koolhaas et al 1990, 1997; Tornatzky and Miczek 1993; Meerlo et al 1996a,b,c; Ruis et al 1999; Lucas et al 2004; Buwalda et al 2005; De Jong et al 2005; Fitchett et al 2005a; Berton et al 2006). The majority of these studies used social defeat protocols where males are exposed to brief periods of attack from a larger more aggressive male, and are then removed to a separate home cage away from the aggressive male. However, the interactions that arise in the course of normal social interactions of group housing can also have long-lasting effects (Fitchett et al 2005a).

We found that subordinate mice that had been separated from their cage mate due to excessive aggressive interactions showed persistent deficits on a T-maze task, that were not remedied by re-housing subordinates as singletons away from their dominant cage mate (Fitchett et al 2005a). Only particularly aggressive pairings were separated in this earlier study. Therefore, in the present study, we tested the effects of social rank and housing conditions on performance in the same T-maze alternation task under conditions in which aggression levels were lower and matched pairs of mice could be selected to test under different housing conditions. In the previous studies, elevated urinary corticosterone predicted later subordination, consistent with intrinsic difference in the stress responsiveness of the mice which turned out to be particularly subject to social defeat (Fitchett et al 2005a,b). Therefore, the present study also examined social rank and performance on T-maze alternation in relation to differences in urinary corticosterone.

Materials and Methods

Animals

Subjects were 60 male CD-1 mice (Harlan Ltd, Oxon, UK), aged six weeks at the time of delivery. Mice were marked with black eyelash dye (Colorsport 30 Day Mascara, Brodie and Stone Plc, UK) to enable individual identification. Two animals were excluded because they did not run on the T-maze (1 separated subordinate and 1 isolated mouse).

Housing conditions

On arrival all mice were singly housed in standard opaque polypropylene laboratory cages (48 x 15 x 13cm; model M3, North Kent Plastics, UK) for two weeks. A 12h:12h reversed light/dark cycle (white lights on 20.30 - 08.30) allowed all behavioural observations to be done during normal working hours in the dark (active) phase under dim (40 W) red lighting. Mice were fed standard laboratory mouse diet (Harlan Ltd, Oxon, UK), *ad libitum* with the exception that food was removed 3 h prior to T-maze testing, to motivate responding. Tap water was available *ad libitum* in the home cage. Cages contained sawdust and environmental enrichment was provided in the form of shredded tissue as nesting material and cardboard tubes.

This settling period as singletons was necessary to allow a suitable baseline determination of corticosterone levels before any social hierarchy developed. At week 3, 10 males were assigned to the isolated housing condition using the random number generator in Microsoft Excel: these individuals remained singly housed throughout the experiment (48 x 15 x 13cm; model M3, North Kent Plastics, UK). Attempts were made to pair-house the remaining 50 individuals, as above in standard cages (48 x 15 x 13cm; model M3, North Kent Plastics, UK) following a previously established procedure (Fitchett et al 2005b).

In total, 17 dyads were created: 14 dyads at the first attempt and 3 at the second attempt. Initial allocation to a dyad was random, at the second attempt selection for pairings was based on a semi-random allocation (from amongst the mice which needed to be re-paired). At week 5, eight of the

dyads that had been created were separated and re-housed as singletons in the same standard cages. The dyads to be separated were selected on the basis of behavioural data collected over the preceding two week social rank establishment period, so that there were no differences in initial aggression levels between dyads that were separated and those that remained paired (behavioural ratings reported below). The remaining nine dyads were pair-housed for the rest of the experiment. In summary, by week 5, three housing conditions had been established: *socially isolated* (n=10), *pair-housed* (n=18) and *separated* (n=16). Figure 1 shows a timeline of the methods used in this experiment.

Rank-related behaviours and housing

During weeks 3 and 4, when both the paired and separated groups were socially housed, daily observation sessions (30 min) recorded the number of aggressive and submissive behaviours to determine the dominant and subordinate male in each dyad (Fitchett et al 2005a). The aggressive and submissive behaviours were adapted from (Mackintosh, 1981) and are summarized in Table 1.

--- Table 1 about here ---

At the end of this two-week period, these data were used to ensure that mice assigned to the paired and separated conditions were matched in terms of initial aggression levels.

Urine collections

Two urine samples were collected. Urine sample A was collected over six days during week 2, when the mice were singly housed. Urine sample B was collected over six days during week 7.

Thus both urine samples were cumulative. Urine collections were carried out during the middle part of the day in a testing room separate from the holding room. Mice were moved at the beginning of each collection day and returned to the holding room at the end of the day. Each mouse was placed individually into an empty opaque polypropylene cage (33 x 15 x 13cm, North Kent Plastics, UK)

for 30 min/day of the collection period (6 days) and all urine produced was collected using a 1 ml syringe and needle (Becton Dickinson UK Ltd, UK), and stored at -20°C until analysis. Urine from each day of the collection period was pooled for each individual, until a suitable sample volume was reached, in most cases 0.5ml, although if this was not possible smaller samples were assayed. To control for the amount of urine produced creatinine was also assayed (Dahlborn 1996; Brennan et al 2000; Muir et al 2001; Van Loo et al 2001a, 2002, 2003; Touma et al 2003).

In the period between urine samples A and B, the paired group had been housed in dyads for four weeks, the separated group had been housed in a dyad for two weeks and re-housed as singletons for two weeks; the isolated group were singly housed throughout the experiment (Figure 1). All samples were assayed for corticosterone and creatinine levels (Fitchett et al 2005a,b). Four corticosterone samples were excluded because the urine volume collected post-pairing was too low for assay.

Urinary corticosterone was measured using an adapted commercial enzyme immunoassay kit (Correlate–EIA, Assay Designs, MI, USA). Samples were assayed after dilution 1/50 with assay buffer using a ROSYS PLATO system automatically performing all pipetting, incubation and measurement stages for the assays. Urinary creatinine was analysed by an automated, modified Jaffe reaction, using a COBAS MIRA clinical analyser (ABX, UK). Quality control samples were run with each batch of urine samples for creatinine and, at the beginning and end of each immunoassay microtitre plate for corticosterone assays. Urine corticosterone results were reported corrected for creatinine content to control for differences in urine production rate and hydration status. Corticosterone values are therefore reported as mg/mol creatinine.

T-maze tests

The T-maze was made of wood and consisted of a central stem measuring 80 x 10 cm, and a left and right arm both measuring 60 x 10 cm. This platform was at a height of 30cm from the ground. At the end of each of the choice arms was a food well, into which sunflower seeds were placed. Mice were given one habituation session which consisted of 5 min free exploration with both choice arms baited with sunflower seeds. Testing began 24 hours later and mice received two trials per day for 15 days. Each trial consisted of two parts: the first was a forced choice run, in which only one arm of the T-maze was accessible; when the mouse entered this arm a reward was placed into the food well. This was followed by a free choice run in which both arms were accessible although mice were only rewarded if they correctly alternated and entered the arm which had been blocked on the forced choice run. If no choice was made after 5 min, mice were removed from the apparatus. The time taken to make a choice on forced and free choice runs was recorded as well as whether mice correctly alternated. The apparatus was wiped with diluted detergent between each run and rewards were not placed into the wells until after a choice had been made, to control for odour cues. The number of left and right trials was counterbalanced across testing.

--- Figure 1 about here ---

Statistical analyses

All analyses were performed using SPSS (version 12.0.1; SPSS Inc, Illinois, USA) in a mixed design. The between groups factors were housing and social rank. It was necessary to conduct separate analyses to examine the effects of housing condition (at three levels: isolated, paired, and separated) because mice in the isolated group did not experience social interactions. However, analyses of the effects of social rank (at two levels: dominant or subordinate) included the relevant housing conditions (this factor now at two levels: paired and separated) to test whether any effects of social rank were moderated by housing condition. The repeated measures factors were week (for

successive determinations of weight); sample (for successive corticosterone assays) or 6 blocks of 5 trials testing on the T-maze (as per Fitchett et al 2005a), as applicable.

Significant effects identified by ANOVA were further investigated using t-tests to compare groups, two-tailed unless otherwise stated. In the case of planned comparisons that were only a small subset of the possible comparisons, the inflation of familywise Type 1 error rate was minimal (Howell, 2002).

The relationship between overall performance accuracy and corticosterone measures was tested by correlational analysis (Pearson, 2-tailed).

The results for the three phases of the study are presented in turn. The first is the pre-pairing data from weeks 1-2: body weights and results of assays on urine sample A. The second phase is the post-pairing data from weeks 3-7: body weights, behavioural observations and results from assays on urine sample B. The third phase is the T-maze data collected over weeks 8-10; the correlation with urinary corticosterone post-pairing and the change in urinary corticosterone from sample A to sample B; as well as a final analysis of body weight differences.

Results

Pre-pairing data (weeks 1-2)

Body weights

Figure 2 shows how body weight changed depending on (A) housing condition and (B) social rank over the duration of the experiment. Body weights collected before pairing were analysed with the repeated measures factor of week (at two levels as two weights were taken before pairing, 1 per week), and the between groups factor of later housing condition (at three levels: isolated, paired and separated). This showed no change in body weight during this period, with no difference by later

housing condition (all $F_s < 1$). Therefore mice were well matched in terms of body weight across the housing condition allocations (Figure 2A, pre-pairing). A second repeated measures ANOVA with the factors of later social rank (dominant or subordinate) and later housing condition (at two levels: paired or separated) suggested that body weight was a predictor of later social rank. This showed an interaction between week and later social rank ($F(1,30) = 5.704$, $p = 0.023$). Mice which would later become dominant showed some increase, mice which would later become subordinate showed some decrease in weight between weeks 1 and 2 (Figure 2B, pre-pairing). There was also a main effect of later social rank on pre-pairing body weight ($F(1,30) = 9.219$, $p = 0.005$): overall, mice which would later be dominant were heavier than mice which would later be subordinate. Again, there were no effects of later housing either on its own or in interaction (maximum $F(1,30) = 2.780$).

---- Figure 2 about here ----

Urine assay for corticosterone

There was no overall effect of housing condition-to-be ($F(2,41) = 0.060$). Therefore the mice were well matched across allocation to the different housing conditions. A second analysis that included later social rank as well as housing condition as factors showed a marginal main effect of later social rank ($F(1,30) = 3.53$, $p = 0.07$) because the mice which would become subordinate tended to have overall higher urinary corticosterone levels. This suggestion of intrinsic difference was confirmed at the post-pairing assay (see below). There was no interaction between later social rank and housing condition-to-be ($F(1,30) = 1.35$).

Post-pairing data (weeks 3-7)

Ratings of rank related behaviours

The number of aggressive and submissive behaviours scored during weeks 3 and 4 was used to identify the dominant and subordinate in each dyad, and also to identify which dyads to separate and which to leave paired (Table 2).

--- Table 2 about here ---

ANOVA confirmed that dominant and subordinate mice were clearly identifiable. As would be expected, there was a clear effect of social rank on both the number of aggressive ($F(1,32) = 17.82$, $p < 0.001$) and submissive behaviours ($F(1,32) = 18.60$, $p < 0.001$) scored during weeks 3 and 4, during which dominance was established within the dyads.

Confirming that the allocation to paired and separated housing groups was well-matched, there was no difference in the number of aggressive or submissive behaviours by housing condition, both $F_s < 1$.

Body weights

Body weights were again analysed with the repeated measures factor of week (at five levels as five weights were taken, 1 per week), first with the between groups factor of housing condition. There was a significant interaction between week and housing condition ($F(8,164) = 3.201$, $p = 0.002$). Figure 2A shows that this interaction arose because the paired group gained more weight. Despite this effect of social housing on the rate of weight gain, there was no overall effect of housing condition ($F(2,41) = 0.874$).

As above, a second repeated measures ANOVA used social rank and housing condition as factors. Body weight of all mice significantly increased during this period resulting in a main effect of week ($F(4,120) = 77.378$, $p < 0.001$). This weight gain did not vary according to social rank ($F(4,120) = 2.201$). There was, however, an overall effect of social rank ($F(1,30) = 6.644$, $p = 0.015$): as was the case pre-pairing, dominants were heavier than subordinates (Figure 2B). As above, there was no

overall effect of housing ($F(1,30) = 2.195$) and no interaction between social rank and housing condition ($F(1,30) = 0.409$).

Urine assay for corticosterone

As might be expected, pre- and post-pairing corticosterone concentrations were significantly correlated ($r(40) = 0.732$, $p < 0.001$). Corticosterone concentrations from urine sample A (pre-pairing) and B (post-pairing) were also compared using a repeated measures ANOVA with housing condition as the factor. This showed an effect of sample in that there was a significant change in corticosterone concentrations between the two assays ($F(1,37) = 41.235$, $p < 0.001$). Table 3 shows that urinary corticosterone concentrations were much lower at the second assay. There was no effect of housing, either overall or in interaction with sample (both $F_s < 1$).

The second repeated measures ANOVA looked at the effect of sample on corticosterone concentrations with both social rank and housing condition as factors. The effect of sample was still significant, as above ($F(1,28) = 30.165$, $p < 0.001$). Importantly, however, the evidence for intrinsic difference was confirmed by the overall effect of social rank ($F(1,28) = 4.090$, $p = 0.05$). Table 3 shows that overall subordinates had higher corticosterone concentrations than dominants. Although the drop in corticosterone post-pairing was bigger in subordinates, the interaction between sample and social rank did not reach significance ($F(1,28) = 3.533$, $p = 0.07$) and there were no significant effects or interactions involving housing condition (maximum $F(1,28) = 1.473$).

--- Table 3 about here ---

T-maze performance (weeks 8-10)

Body weights

Body weights collected during T-maze testing were analysed with the repeated measures factor of week (at three levels as three weights were taken, 1 per week) in a repeated measures ANOVA to first test for differences by housing condition. There was a main effect of week ($F(2,80) = 13.551$, $p < 0.001$). Overall all mice continued to increase in weight during the T-maze testing (Figure 2A). There was no effect of housing either overall or in interaction with week (maximum $F(4,80) = 2.310$).

Again a second repeated measures ANOVA was conducted to test for effects of social rank. As reported for the full sample above, there was an effect of week ($F(2,58) = 6.639$, $p = 0.002$) but not in interaction with social rank or housing condition (maximum $F(2,58) = 2.561$). There was, however, an overall effect of social rank ($F(1,29) = 5.143$, $p = 0.031$) as dominants remained heavier than subordinates (Figure 2B). As above, there was no effect of housing condition (maximum $F(1,29) = 2.916$, NS).

T-maze performance

The 30 T-maze test sessions were analysed in six blocks of five trials in a repeated measures ANOVA with blocks at 6 levels, first with housing condition between subjects. The dependent variable was choice accuracy. Figure 3 shows that performance started high with the mice scoring the maximum possible number correct at the start of training. This reflects a high level of spontaneous alternation as the mice had no pre-training, just a single habituation session on the apparatus. However, performance was not at ceiling in that there was later fluctuation in performance over successive testing blocks, reflected in a main effect of blocks ($F(5,195) = 8.320$, $p < 0.001$), and a significant interaction between blocks and housing condition ($F(10,195) = 2.200$, $p = 0.019$). Differences emerged first at block 4, where both paired and isolated groups outperformed the separated mice, minimum $t(22) = 2.288$, $p = 0.032$, but this difference was non-systematic in

that performance of the separated mice subsequently recovered. There was no overall effect of housing condition ($F(2,39) = 1.726$).

--- Figure 3 about here ---

The second repeated measures ANOVA included the social rank factor. There was a main effect blocks ($F(5,145) = 4.519$, $p = 0.001$), as reported for the full sample above. There was no effect of social rank, either on its own or in interaction with blocks or housing (maximum $F(5,145) = 1.832$, NS). Again there was no overall effect of housing condition ($F(1,29) = 3.152$).

Thus performance levels were high and what variability there was (reflected in the main effect of blocks) did not relate to housing or social rank. Nonetheless, the overall number of correct responses on T-maze tests was inversely correlated with post-pairing corticosterone concentration ($r(38) = -0.390$, $p = 0.015$), so the greater the number of correct responses the lower the corticosterone concentration. This was confirmed by analysis of a difference score to adjust for individual differences pre-pairing: the number of correct alternations was positively correlated with the change in corticosterone concentration from the pre- to the post-pairing assay ($r(38) = 0.340$, $p = 0.037$), so the greater the number of correct alternations the greater the drop in corticosterone concentration between the two assays (Figure 4).

---- Figure 4 about here ----

Discussion

As expected, the mice clearly polarized into dominant and subordinate members of each dyad. Importantly, there were no effects of later housing condition on body weights or corticosterone concentrations during the pre-pairing period, so the mice were well matched across the different housing condition allocations. To ensure this matching, there were a number of differences between the present and the previous study (Fitchett et al 2005a), as a result of procedural changes

(including the delay between housing manipulations and T-maze testing) intended to reduce the possibility that aggression levels would escalate. In the previous study, aggression levels became so high there was a risk of injury which made it necessary to separate some dyads on a non-random basis (Fitchett et al 2005a). Thus, in the present study aggression levels were comparatively lower because separation was not necessary.

In the earlier study, the subordinates showing impaired accuracy in spatial alternation in the same T-maze task were from the more aggressive dyads and had particularly elevated corticosterone levels (Fitchett et al 2005a). In the present study, although there were clear physiological differences by social rank (in terms of body weight and corticosterone levels) there were no differences in T-maze performance by social rank. In particular, there was no performance impairment on the T-maze in mice classified as subordinate. However, correlational analyses showed that accuracy was nonetheless improved in mice with relatively lower post-pairing corticosterone levels. Comparison with earlier findings in the same procedure (Fitchett et al 2005a) suggests that categorical effects by social rank may only be demonstrable when aggression levels are relatively high (Koolhaas et al 1990, 1997; Tornatzky and Miczek 1993; Meerlo et al 1996a,b,c; De Jong et al 2005). That differences in T-maze performance should depend on social contextual factors such as the level of home cage aggression is consistent with the view that investment in learning and performance should vary depending on the reproductive value of the learning outcome (Barnard and Luo, 2002).

Physiological measures

Throughout the experiment males adopting a dominant status were heavier than their subordinate conspecifics. However, although the weight advantage in dominants persisted during the period of pairing, social rank did not affect the rate of weight gain. Moreover, we found that the weight

difference was evident even before mice were pair-housed. This evidence for intrinsic difference supports the hypothesis that relatively increased body weight may be a factor in determining the greater competitive ability of dominants compared with subordinates (Van Zegeren 1980; Clutton-Brock et al 1988; Schüler and Renne 1988; Andersson 1994).

In contrast there was little evidence that housing condition affected body weight at any point during the study. The single exception was that, during the phase in which housing condition was manipulated, the paired group gained more weight, consistent with welfare benefits of social housing (Faraday 2002; Van Loo et al 2001b).

Urine assays showed that subordinates had overall higher corticosterone concentrations compared with dominants. This finding is typically related to the greater social stress experienced by low ranking animals (Louch and Higginbotham 1967; Wittenberger 1981; Blanchard et al 1993; Schulkin 1999; Avitsur et al 2001; Keeney et al 2001; Sloman et al 2002; Cacho et al 2003; Summers et al 2003). However, in line with our earlier findings (Fitchett et al 2005a,b), present results suggest that high corticosterone reflects an intrinsic difference, independent of social housing. Between the two urine assays, before and after housing conditions were manipulated, there was a large drop in corticosterone concentrations. This drop is most likely attributable to habituation to the laboratory environment; what matters is whether it was moderated by housing condition or social rank.

Although as Table 3 shows this drop was larger in subordinates, it did not significantly differ by housing condition or social rank. Analysis of urinary corticosterone across the two samples showed that subordinates had overall higher corticosterone concentrations than dominants. Thus this pattern of effects is similar but not identical to what we found in the earlier study (Fitchett et al 2005a).

T-maze performance

There was some decline in accuracy (correct alternations) over successive blocks of trials. This decline in accuracy most likely results from a build up of proactive interference from one trial to the next as the mice became confused with repeated arm visits (Cohen et al 1996; Bakanova et al 1997). There was some effect of housing condition but this seemed to be non-systematic variation in that performance in the separated group subsequently recovered.

Similarly, there were no overall effects of social rank on T-maze performance. However, across the different groups of mice, accuracy scores were inversely related to post-pairing urinary corticosterone levels: the greater the number of correct responses the lower the corticosterone concentration. Using a difference measure to control for individual differences in baseline corticosterone levels pre-pairing confirmed this relationship: the greater the drop in corticosterone from pre- to post-pairing, the higher the accuracy scores.

In line with other studies, this would suggest that relatively higher corticosterone concentrations can have a negative effect on performance in learning tasks (McEwen and Sapolsky 1995; De Kloet et al 1999, 2002, 2005; Sapolsky 1999; McEwen 2004; Joëls et al 2004, 2006). Although no overall categorical effects of social rank were found on T-maze performance, corticosterone concentrations were higher in subordinate compared with dominant males. Thus the lower urinary corticosterone - that predicts better T-maze accuracy - conforms to the dominant mice' profile (see Table 3).

Animal welfare implications

The results of the present study lend further support to the proposition that non-invasive measures of corticosterone levels may be used to predict diverse welfare outcomes for laboratory mice, from body weight to cognitive performance (Lane, 2006). Specifically, the present data provide additional confirmation of the viability of urinary corticosterone assays as an alternative to salivary and faecal assays. However, our data suggest that this averaged measure of stress responsiveness

can best be determined prior to social housing and habituation to laboratory conditions. The majority of studies sampling corticosterone levels in relation to social housing have done so only some weeks after arrival in the laboratory and the results have been inconclusive (Krohn et al 2006). In the present study, more than one sample was needed to demonstrate the overall effect of social rank on corticosterone levels but, with time to adapt to conditions, we find that although the measure remains predictive initially clear differences between animals are attenuated (see also Fitchett et al 2005a, 2005b).

Consistent with our earlier study when aggression levels were low (Fitchett et al 2005a), group housing produced little in the way of possibly adverse effects in male CD-1 mice. However, neither was there any benefit of group housing. There was some effect of housing on weight gain in that this was relatively greater in the paired group (though with some differences by social rank, reported below), but no effect of housing on corticosterone levels.

Male mice classified as dominant and subordinate on the basis of behavioural ratings clearly differed in terms of body weight and corticosterone concentrations. Males that adopted a dominant social rank were heavier than those that adopted a subordinate social rank. Moreover, the link between social rank and body weight was evident before males were paired. Similarly, dominant males had overall lower corticosterone concentrations than subordinates. Consistent with earlier work, these findings suggest that there are intrinsic physiological differences between mice that will adopt different social ranks (Fitchett et al 2005a,b). Present findings confirm that intrinsic physiological parameters rather than external influences such as social housing can have more influence on mouse behaviour.

Acknowledgements

Urinary corticosterone assays were performed by Howard Mason, Health and Safety Laboratory, Harpur Hill, Buxton, Derbyshire, SK17 9JN, UK. A.E.F. was supported by a BBSRC Committee Studentship.

References

Andersson M 1994 *Sexual Selection*. Princeton University Press, Princeton, New Jersey, USA.

Avitsur R, Stark J and Sheridan JF 2001 Social stress induces glucocorticoid resistance in subordinate animals. *Horm Behav* 3: 247-257.

Bakanova LA, Druzin MY, Kozlov AP, Kurzina NP and Malinina EP 1997 The effects of proactive interference during spatial task performance in rats. *Zh Vyssh Nerv Deyat*, 4: 78-85.

Barnard CJ and Luo N 2002 Acquisition of dominance status affects maze learning in mice. *Behav Process*, 60: 53-59.

Bartolomucci A, Palanza P, Gastani L, Limiroli E, Panerai AE, Ceresini G, Poli MD and Parmigiani S 2001 Social status in mice: Behavioral, endocrine and immune changes are context dependent. *Physiol Behav*, 73: 401-410.

Bartolomucci A, Palanza P, Sacerdote P, Ceresini G, Chirieleison A, Panerai AE and Parmigiani S 2003a Individual housing induces altered immuno-endocrine responses to psychological stress in male mice. *Psychoneuroendocrinology*, 2: 540-558.

Bartolomucci A, Palanza P, Parmigiani S, Pederzani T, Merlot E, Neveu PJ and Dantzer R 2003b Chronic psychosocial stress down-regulates central cytokines mRNA. *Brain Res Bull*, 6: 173-178.

Bartolomucci A, Palanza P, Costoli C, Savani E, Laviola G, Parmigiani S and Sgoifo A 2003c Chronic psychosocial stress persistently affects autonomic function and physical activity in mice. *Physiol Behav*, 80: 57-67.

Bartolomucci A, Pederzani T, Sacerdote P, Panerai AE, Parmigiani S and Palanza P 2004 Behavioral and physiological characterisation of mice under chronic psychosocial stress. *Psychoneuroendocrinology*, 29: 899-910.

Bartolomucci A, Palanza P, Sacerdote P, Panerai AE, Sgoifo A, Dantzer R and Parmigiani S 2005 Social factors and individual vulnerability to chronic stress exposure. *Neurosci Biobehav Rev*, *29*: 67-81.

Berton O, McClung CA, DiLeone RJ, Krishnan V, Renthal W, Russo SJ, Graham D, Tsankova NM, Bolanos CA, Rios M., Monteggia LM, Self DW and Nestler EJ 2006 Essential role of BDNF in the mesolimbic dopamine pathway in social defeat stress. *Science*, *31*: 864-868.

Blanchard DC, Sakai RR, McEwan B, Weiss SM and Blanchard RJ 1993 Subordination stress: Behavioural, brain and neuroendocrine correlates. *Behav Brain Res*, *5*: 113-121.

Brennan FX, Ottenweller JE, Seifu Y, Zhu G and Servatius RJ 2000 Persistent stress-induced elevations of urinary corticosterone in rats. *Physiol Behav*, *71*: 441-446.

Buwalda B, Kole MHP, Veenema AH, Huininga M, de Boer SF, Korte SM, Koolhaas JM 2005 Long-term effects of social stress on brain and behavior: A focus on hippocampal functioning. *Neurosci Biobehav Rev*, *2*: 83-97.

Cacho R, Fano E, Areso P, Garmendia L, Vegas O, Brain PF and Azpíroz A 2003 Endocrine and lymphoproliferative response changes produced by social stress in mice. *Physiol Behav*, *78*: 505-512.

Chida Y, Sudo N, Mori J and Kubo C 2006 Social isolation stress impairs passive avoidance learning in senescence-accelerated mouse (SAM). *Brain Res*, *1067*: 201-208.

Clutton-Brock TH, Albon SD and Guinness FE 1988 Reproductive success in male and female red deer. In: *Reproductive Success*, pp. 325-343 (Eds. T.H. Clutton-Brock) University of Chicago Press, Chicago, USA.

Cohen JS, Sturdy C and Hicks M 1996 Intratrial proactive interference in rats' serial alternation performance in the radial maze. *Anim Learn Behav*, *24*: 300-309.

Collins SA, Gosling LM, Hudson J and Cowan D 1997 Does behaviour after weaning affect the dominance status of adult male mice (*Mus domesticus*)? *Behaviour*, *134*: 989-1002.

Coudereau JP, Debray M, Monier C, Bourre JM and Frances H 1997 Isolation impairs place preference conditioning to morphine but not aversive learning in mice. *Psychopharmacology*, *130*: 117-123.

Crowcroft P 1966 *Mice All Over*. Foulis, London, UK.

Dahlborn K, van Gils BAA, van de Weerd HA, van Dijk JE and Baumans V 1996 Evaluation of long-term environmental enrichment in the mouse. *Scand J Lab Anim Sci*, *23*: 97-106.

De Jong JG, van der Vegt BJ, Buwalda B and Koolhaas JM 2005 Social environment determines the long-term effects of social defeat. *Physiol Behav*, *84*: 87-95.

De Kloet ER, Oitzl MS and Joëls M 1999 Stress and cognition: Are corticosteroids good or bad guys? *Trends Neurosci*, *22*: 422-426.

De Kloet ER, Grootendorst J, Karssen AM. and Oitzl MS 2002 Gene x environment interaction and cognitive performance: Animal studies on the role of corticosterone. *Neurobiol Learn Mem*, *78*: 570-577.

De Kloet ER, Joëls M and Holsboer F 2005 Stress and the brain: From adaptation to disease. *Nat Rev Neurosci*, *6*: 463-475.

Desjardins C, Maruniak JA and Bronson FH 1973 Social rank in house mice: Differentiation revealed by ultraviolet visualization of urinary marking patterns. *Science*, *182*: 939-941.

Elliott BM and Grunberg NE 2005 Effects of social and physical enrichment on open field activity differ in male and female Sprague-Dawley rats. *Behav Brain Res*, *165*: 187-196.

Faraday MM 2002 Rat sex and strain differences in response to stress. *Physiol Behav*, *75*: 507-522.

Fitchett AE, Collins SA, Barnard CJ and Cassaday HJ 2005a Subordinate male mice show long-lasting differences in spatial learning that persist when housed alone. *Neurobiol Learn Mem*, *84*: 247-251.

Fitchett AE, Collins SA, Mason H, Barnard CJ and Cassaday HJ 2005b Urinary corticosterone measures: Effects of strain and social rank in BKW and CD-1 mice. *Behav Process*, *70*: 168-176.

Fitchett AE, Barnard CJ and Cassaday HJ 2006 There's no place like home: Cage odours and place preference in subordinate CD-1 male mice. *Physiol Behav*, *87*: 955-962.

Gray S and Hurst JL 1995 The effects of cage cleaning on aggression within groups of male laboratory mice. *Anim Behav*, *49*: 821-826.

Guo M, Wu CF, Liu W, Yang JY and Chen D 2004 Sex difference in psychological behavior changes induced by long-term social isolation in mice. *Prog Neuro-Psychoph*, *28*: 115-121.

Haseman JK, Bourbina J and Eustis SL 1994 Effects of individual housing and other experimental design factors on tumor incidence in B6C3F1 mice. *Fund Appl Toxicol*, *23*: 44-52.

Hermes GL, Jacobs LF and McClintock MK 2005 The sectorized foraging field: A novel design to quantify spatial strategies, learning, memory, and emotion. *Neurobiol Learn Mem*, *84*: 69-73.

Howell DC 2002 *Statistical Methods for Psychology*, 5th ed. Belmont (CA): Duxbury Press; p375-377.

Hurst JL, Barnard CJ, Nevison CM and West CD 1997 Housing and welfare in laboratory rats: Welfare implications of isolation and social contact among caged males. *Anim Welfare*, *6*: 329-347.

Ikemoto S and Panksepp J 1992 The effects of early social-isolation on the motivation for social play in juvenile rats. *Dev Psychobiol*, *25*: 261-274.

Jennings M, Batchelor GR, Brain PF, Dick A, Elliot H, Francis RJ, Hubrecht RC, Hurst JL, Morton DB, Peters AG, Raymond R, Sales GD, Sherwin CM and West C 1998 Refining rodent husbandry: The mouse. Report of the Rodent Refinement Working Party. *Lab Anim*, *32*: 233-259.

Joëls M, Karst H, Alfarez D, Heine VM, Qin Y, van Riel E, Verkuyl M, Lucassen PJ and Krugers HJ 2004 Effects of chronic stress on structure and cell function in rat hippocampus and hypothalamus. *Stress*, *7*: 221-231.

Joëls M, Pu Z, Wiegert O, Oitzl MS and Krugers HJ 2006 Learning under stress: How does it work? *Trends Cogn Sci*, *10*: 152-158.

Keeney AJ, Hogg S and Marsden CA 2001 Alterations in core body temperature, locomotor activity and corticosterone following acute and repeated social defeat of male NMRI mice. *Physiol Behav*, *74*: 177-184.

Koolhaas JM, Hermann PM, Kemperman C, Bohus B, van den Hoofdakker RH and Beersma DGM 1990 Single social defeat in rats induces a gradual but long lasting behavioural change: A model of depression? *Neurosci Res Commun*, *7*: 35-41.

Koolhaas JM, De Boer SF, De Ruiter AJH, Meerlo P and Sgoifo A 1997 Social stress in rats and mice. *Acta Physiol Scand*, *161* (supplement 640): 69-72.

Koyama S 1993 Isolation effect in mice (*Mus musculus*): (i) Does it really induce aggression? *J Ethol*, *11*: 117-130.

Koyama S 1995 Effects of a short period of isolation in adulthood on the aggressive behavior of dominant and subordinate male mice. *J Ethol*, *13*: 175-180.

Krohn TC, Sorensen DB, Ottesen JL and Hansen AK 2006 The effects of individual housing on mice and rats: a review. *Anim Welfare*, *15*: 343-352.

Kudryavtseva NN, Bakshantovskaya IV and Koryakina LA 1991 Social model of depression in mice of C57BL/6J strain. *Pharmacol Biochem Behav*, *38*: 315-320.

Lane J 2006. Can non-invasive glucocorticoid measures be used as reliable indicators of stress in animals. *Anim Welfare*, *15*: 343-352.

Louch CD and Higginbotham M 1967 The relation between social rank and plasma corticosterone levels in mice. *Gen Comp Endocrinol*, *8*: 441-444.

Lu L, Bao G, Chen H, Xia P, Fan X, Zhang J, Pei G and Ma L 2003 Modification of hippocampal neurogenesis and neuroplasticity by social environments. *Exp Neurol*, *183*: 600-609.

Lucas LR, Celen Z, Tamashiro KLK, Blanchard RJ, Blanchard DC, Markham C, Sakai RR and McEwen BS 2004 Repeated exposure to social stress has long-term effects on indirect markers of dopaminergic activity in brain regions associated with motivated behaviour. *Neuroscience*, *124*: 449-457.

Lumley LA, Sipos MI, Charles RC, Charles RF and Meyerhoff JL 1999 Social stress effects on territorial marking and ultrasonic vocalizations in mice. *Physiol Behav*, *67*: 769-775.

Mackintosh JH 1981 Behaviour of the house mouse. *Symp Zool Soc Lond*, *47*: 337-365.

Martínez M, Calvo-Torrent A and Pico-Alfonso MA 1998 Social defeat and subordination as models of social defeat in laboratory rodents: A review. *Aggressive Behav*, *24*: 241-256.

McEwen BS and Sapolsky RM 1995 Stress and cognitive function. *Curr Opin Neurobiol*, *5*: 205-216.

McEwen BS 2004 Protection and damage from acute and chronic stress: Allostasis and allostatic overload and relevance to the pathophysiology of psychiatric disorders. *Ann N Y Acad Sci*, *1032*: 1-7.

Meerlo P, De Boer SF, Koolhaas JM, Daan S and Van den Hoofdakker RH 1996a Changes in daily rhythms of body temperature and activity after a single social defeat in rats. *Physiol Behav*, *59*: 735-739.

Meerlo P, Overkamp GJF, Benning MA, Koolhaas JM and Van Den Hoofdakker RH 1996b. Long-term changes in open field behaviour following a single social defeat in rats can be reversed by sleep deprivation. *Physiol Behav*, *60*: 115-119.

Meerlo P, Overkamp GJF, Daan S, Van den Hoofdakker RH and Koolhaas JM 1996c Changes in behaviour and body weight following a single or double social defeat. *Stress*, *1*: 21-32.

Mondragón R, Mayagoitia L, López-Luján A and Díaz J 1987 Social structure features in three inbred strains of mice, C57B1/6J, Balb/cj, and NIH: A comparative study. *Behav Neural Biol*, *47*: 384-391.

Moragrega I, Carrasco MC, Vicens P and Redolat R 2003 Spatial learning in male mice with different levels of aggressiveness: Effects of housing conditions and nicotine administration. *Behav Brain Res*, *147*: 1-8.

Moragrega I, Carrasco MC and Redolat R 2005 Effects of housing and nicotine on shuttle-box avoidance in male NMRI mice. *Behav Brain Res*, *164*: 178-187.

Muir C, Spironella-Vella E, Pisani N, De Catanzaro D 2001 Enzyme immunoassay of 17 beta-estradiol, estrone conjugates, and testosterone in urinary and fecal samples from male and female mice. *Horm Metab Res*, *33*: 653-658.

Poole TB and Morgan HDR 1973 Differences in aggressive behaviour between male mice (*Mus musculus L.*) in colonies of different sizes. *Anim Behav*, *21*: 788-795.

Poole TB and Morgan HDR 1976 Social and territorial behaviour of laboratory mice (*Mus musculus L.*) in small complex areas. *Anim Behav*, *24*: 476-480.

Ruis MAW, te Brake JHA, Buwalda B, De Boer SF, Meerlo P, Korte SM, Blokhuis HJ and Koolhaas JM 1999 Housing familiar male wildtype rats together reduces the long-term adverse behavioural and physiological effects of social stress. *Psychoneuroendocrinology*, *24*: 285-300.

Sandstrom NJ and Hart SR 2005 Isolation stress during the third postnatal week alters radial arm maze performance and corticosterone levels in adulthood. *Behav Brain Res*, *156*: 289-296.

Sapolsky RM 1999 Glucocorticoids, stress, and their adverse neurological effects: Relevance to aging. *Exp Gerontol*, *34*: 721-732.

Schüler L and Renne U 1988 Relationship of social rank in mice to growth, endurance, and fertility. *Aggressive Behav*, *14*: 205-211.

Schulkin J 1999 *The Neuroendocrine Regulation of Behaviour*. Cambridge University Press, Cambridge, UK.

Sloman KA, Montpetit CJ and Gilmour KM 2002 Modulation of catecholamine release and cortisol secretion by social interactions in the rainbow trout, *Oncorhynchus mykiss*. *Gen Comp Endocrinol*, *127*: 136-146.

Spritzer MD, Meikle DB and Solomon NG 2004 The relationship between rank and spatial ability among male meadow voles (*Microtus pennsylvanicus*). *J Comp Psychol*, *118*: 332-339.

Suckow MA, Dannerman P and Brayton C 2001 *The Laboratory Mouse*. CRC Press LLC, Florida, USA.

Summers CH, Summers TR, Moore MC, Korzan WJ, Woodley SK, Ronan PJ, Hoglund E, Watt MJ and Greenberg N 2003 Temporal patterns of limbic monoamine and plasma corticosterone response during social stress. *Neuroscience*, *116*: 553-563.

Tornatzky W and Miczek KA 1993 Long-term impairment of autonomic circadian rhythms after brief intermittent social stress. *Physiol Behav*, *53*: 983-993.

Touma C, Sachser N, Möstl E and Palme R 2003 Effects of sex and time of day on metabolism and excretion of corticosterone in urine and feces of mice. *Gen Comp Endocr*, *130*: 267-278.

Valzelli L 1973 The “Isolation Syndrome” in mice. *Psychopharmacologia*, *31*: 305-320.

Valzelli L, Bernasconi S and Cusumano G 1977 Prolonged isolation and alcohol effect on avoidance learning in two strains of mice. *Neuropsychobiology*, *3*: 135-143.

Van Loo PLP, Kruitwagón CLJJ, Van Zutphen LFM, Koolhaas JM and Baumans V 2000 Modulation of aggression in male mice: Influence of cage cleaning regime and scent marks. *Anim Welfare*, *9*: 281-295.

Van Loo PLP, Mol JA, Koolhaas JM, Van Zutphen BFM and Baumans V 2001a Modulation of aggression in male mice: Influence of group size and cage size. *Physiol Behav*, *72*: 675-683.

Van Loo PLP, De Groot AC, Van Zutphen LFM and Baumans V 2001b Do male mice prefer or avoid each other’s company? – Influence of hierarchy, kinship and familiarity. *J Appl Anim Welfare Sci*, *4*: 91-103.

Van Loo PLP, Kruitwagón CLJJ, Koolhaas JM, Van de Weerd HA, Van Zutphen LFM and Baumans V 2002 Influence of cage enrichment on aggressive behaviour and physiological parameters in male mice. *Appl Anim Behav Sci*, *76*: 65-81.

Van Loo PLP, Van Der Meer E, Kruitwagen CLJJ, Koolhaas JM, Van Zutphen LFM and Baumans V 2003 Strain-specific aggressive behaviour of male mice submitted to different husbandry procedures. *Aggressive Behav*, 29: 69-80.

Van Loo PLP, Van de Weerd HA, Van Zutphen LFM and Baumans V 2004 Preference for social contact versus environmental enrichment in male laboratory mice. *Lab Anim*, 38: 178-188.

Van Zegeren K 1980 Variation in aggressiveness and the regulation of numbers in house mouse populations. *Neth J Zool*, 30: 635-770.

Wittenberger JF 1981 *Animal Social Behavior*. Wadsworth Inc., California, USA.

Wongwitdecha N and Marsden CA 1996 Social isolation increases aggressive behaviour and alters the effects of diazepam in the rat social interaction test. *Behav Brain Res*, 75: 27-32.

Wu W, Yamaura T, Murakami K, Murata J, Matsumoto K, Watanabe H and Saiki I 2000 Social isolation stress enhanced liver metastasis of murine colon 26-L5 carcinoma cells by suppressing immune responses in mice. *Life Sci*, 66: 1827-1838.

Aggressive Behaviours	Submissive Behaviours
Threat	Evade
Aggressive Groom	Retreat
Bite	Flee
Over	On Back
Chase	Oblique Posture
Rattle	Kick
Circle	Crouch
Zigzag	Straight Legs
Walk Round	On Bars
	Off Bars Freeze

Table 1. Scoring system used for aggressive and submissive behaviours during weeks 3 and 4 in which there were regular 30 min observation sessions of dyads (based on Mackintosh 1981).

Group	Aggressive behaviours	Submissive behaviours
Dominants (n = 17)	15.1 (3.19)	0.9 (0.59)
Subordinates (n = 17)	1.4 (0.66)	14.8 (3.15)
Paired (n = 18)	8.0 (2.42)	7.7 (2.36)
Separated (n = 16)	8.5 (3.36)	8.1 (3.37)

Table 2. Mean number of aggressive and submissive behaviours recorded during behavioural observation sessions by social rank and housing condition. Numbers in brackets are the standard error about the mean.

Group	Pre-pairing	Post-pairing
Dominant (n = 17)	7.3 (0.97)	3.1 (0.36)
Subordinate (n = 15)	13.3 (2.97)	4.9 (1.20)
Isolated (n = 8)	10.0 (1.29)	2.4 (0.54)
Paired (n = 17)	10.1 (1.08)	3.6 (0.37)
Separated (n = 15)	10.1 (3.14)	4.4 (1.23)

Table 3. Mean corticosterone concentrations (mg/mol creatinine) as determined from the pre- and post-pairing urine samples, shown separately by social rank and housing condition. Numbers in brackets are the standard error about the mean.

Figure Legends

Figure 1

The timeline of the study: The right-hand side panel gives the cumulative elapsed time in weeks.

Figure2

Body weight (g) changes during the different stages of the study by (A) housing condition and (B) social rank.

Figure 3

Mean number of correct alternations at each test block by housing condition. A score of 5 reflects the maximum alternation score; a score of 2.5 reflects chance level performance. Error bars are the standard errors about the mean.

Figure 4

The correlation between T-maze performance scored as the overall mean for correct alternations and the change in corticosterone concentration from the pre- to the post-pairing assay.

Figure 1

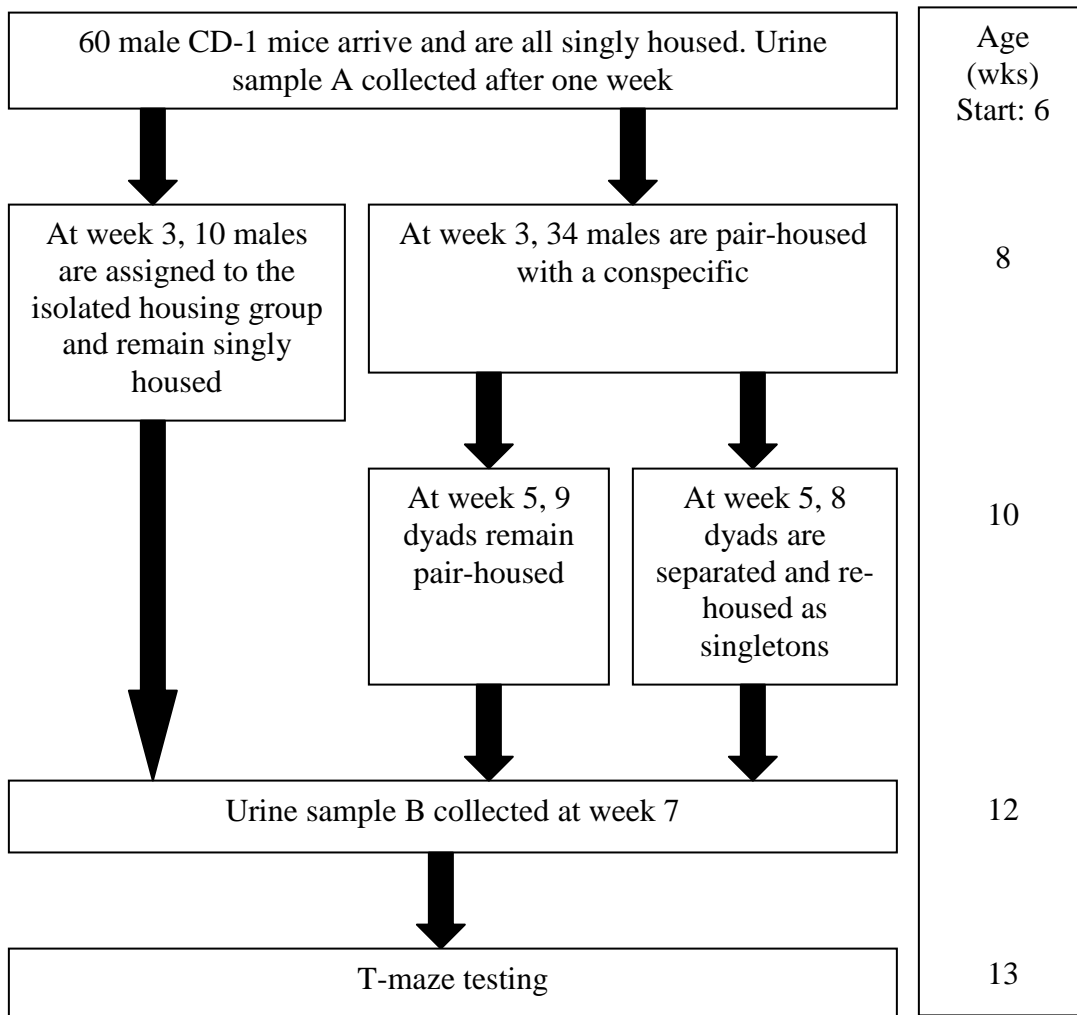


Figure 2

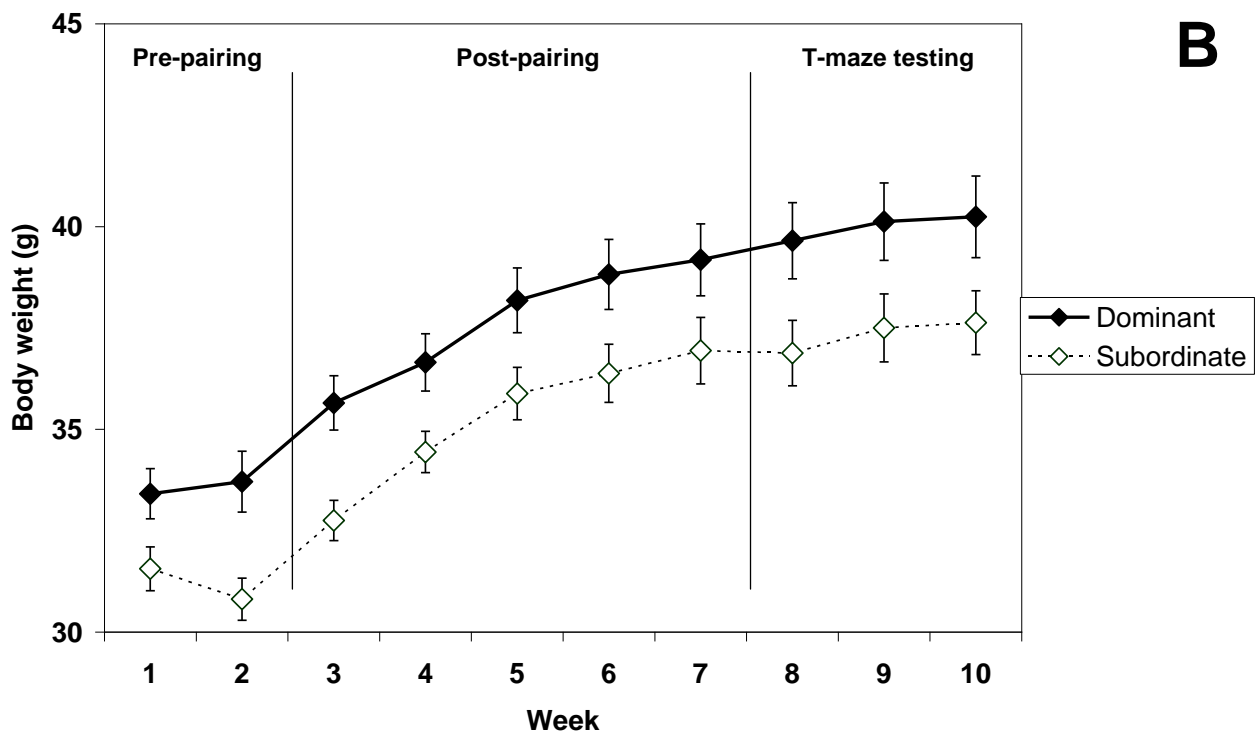
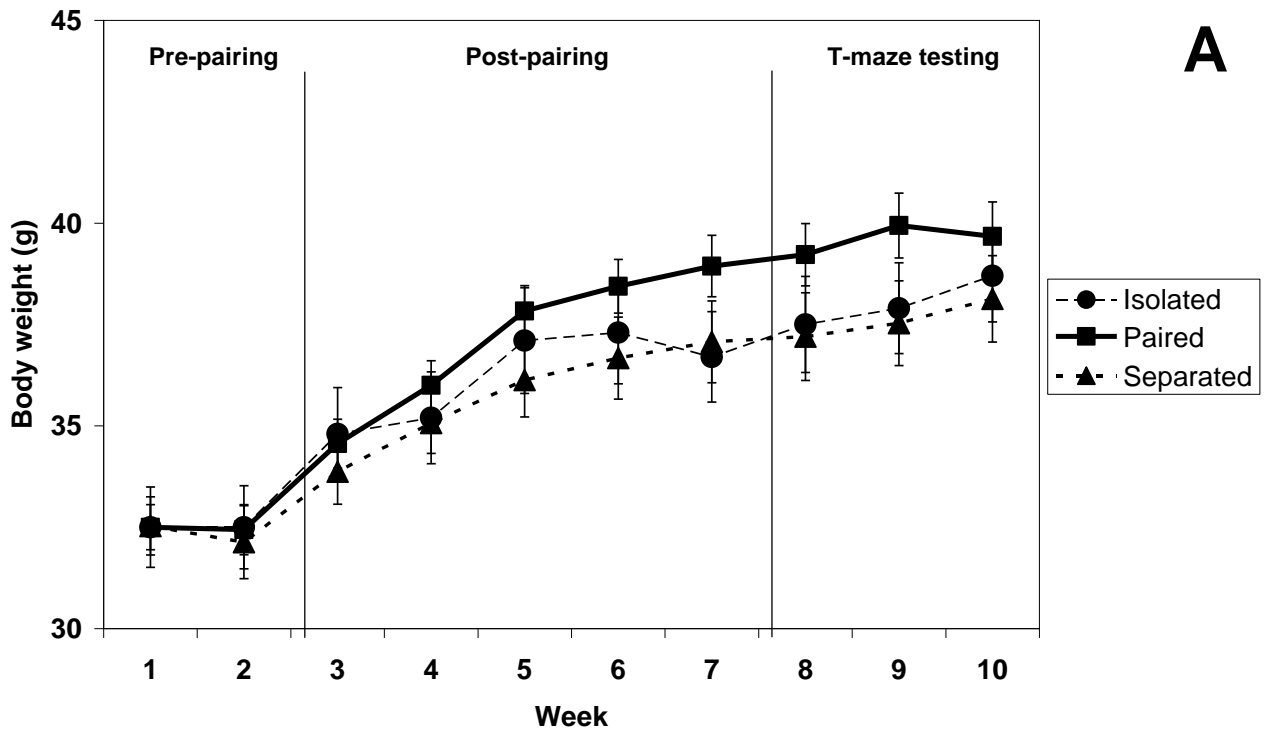


Figure 3

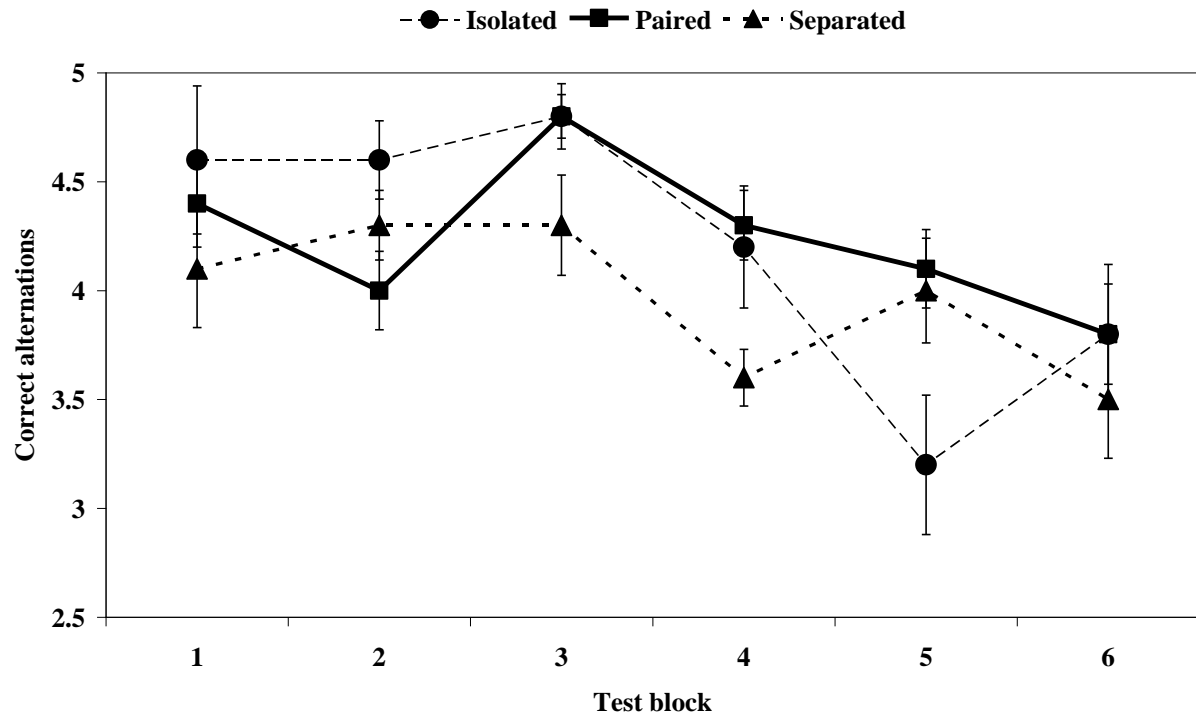


Figure 4

